

Antenna SPECIFICATION

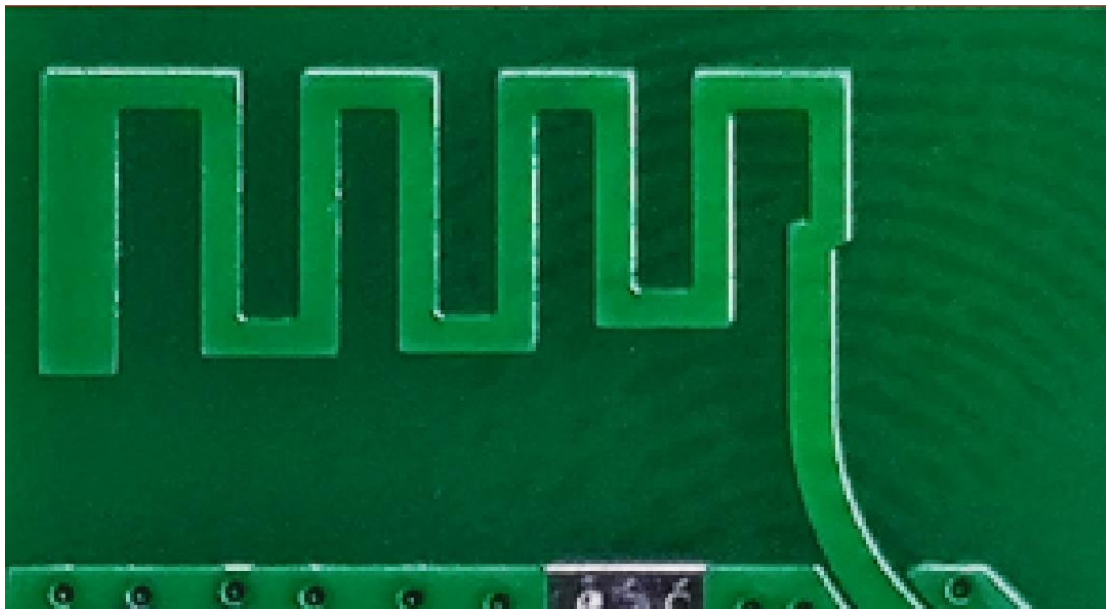
Product description: 2.4G PCB Antenna
Uni Link's part number: ANTENNA-2400
Issue Date: 2023-07-14
Note: 2400-2500MHZ
Manufacturer: Shenzhen Sonoff Technologies Co.,Ltd.
Address:
3F & 6F, Bldg A, No. 663, Bulong Rd, Shenzhen, Guangdong, China

1、 (PRODUCT TECHNICAL SPECIFICATION)

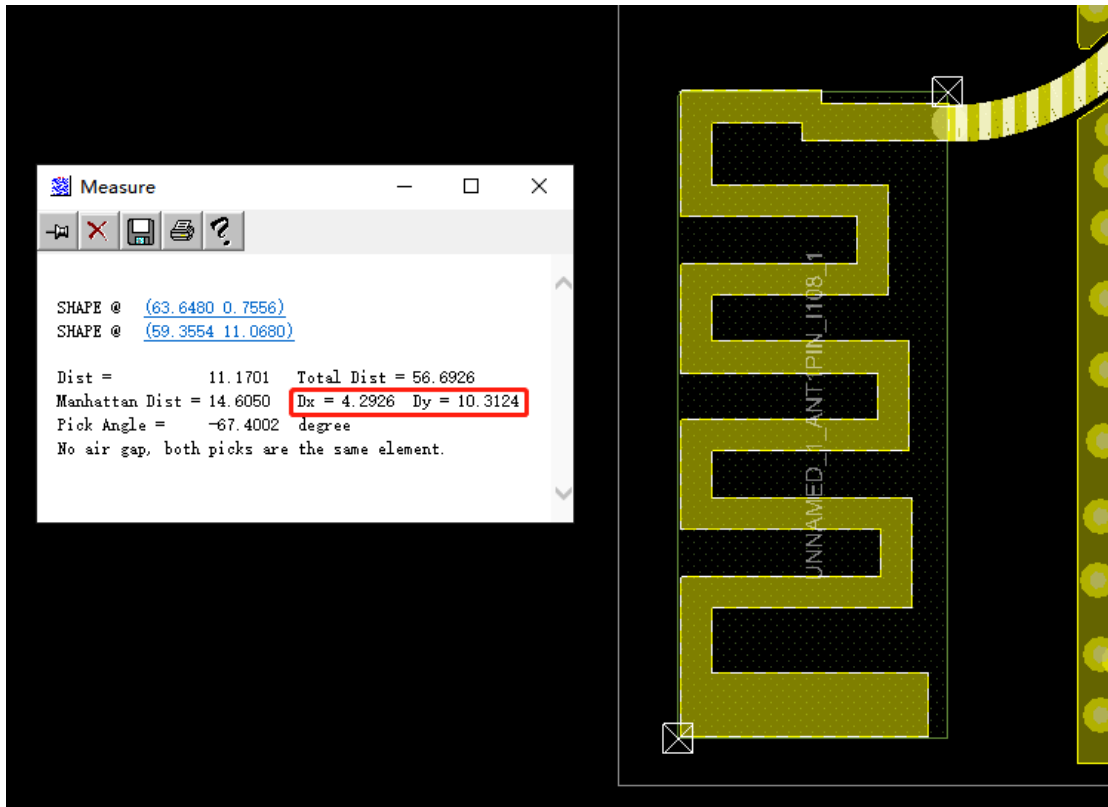
Electrical Specifications	
Frequency Range (MHz)	2400-2500
Input Impedence (Ω)	53
V.S.W.R	≤ 1.5
Gain (dBi)	-0.8
Polarization Type	Horizontal
Power Capacity (w)	5
Mechanical Specifications	
Antenna Length (mm)	-
Radiator	Cuprum
Connect Type	NC

Working Temp(°C)	-10~40
Storage Temperature(°C)	-20~55
antenna size	14.4mm x 4.9mm
Weight (g)	9

2、PRODUCT PICTURE



3、PRODUCT SPECIFICATION CHART



4、 Image of antenna field shape test



4、 Gain

FETUKEJI											
Frequency ID	1	2	3	4	5	6	7	8	9	10	11
Frequency (MHz)	2400.0	2410.0	2420.0	2430.0	2440.0	2450.0	2460.0	2470.0	2480.0	2490.0	2500.0
Point Values											
Ant. Port Input Pwr. (dBm)	0.00	0.00	0.00	0.00	0.00	0.00	0.00	0.00	0.00	0.00	0.00
Tot. Rad. Pwr. (dBm)	-6.47	-6.56	-6.34	-5.87	-6.36	-6.32	-6.21	-6.16	-6.05	-6.63	-6.53
Peak EIRP (dBm)	-1.91	-1.80	-1.40	-0.80	-1.48	-1.57	-1.58	-1.72	-1.91	-2.70	-2.74
Directivity (dBi)	4.56	4.76	4.94	5.06	4.89	4.75	4.63	4.44	4.13	3.93	3.79
Efficiency (dB)	-6.47	-6.56	-6.34	-5.87	-6.36	-6.32	-6.21	-6.16	-6.05	-6.63	-6.53
Efficiency (%)	22.50	22.10	23.20	25.90	23.10	23.40	24.00	24.20	24.80	21.70	22.20
Gain (dBi)	-1.91	-1.80	-1.40	-0.80	-1.48	-1.57	-1.58	-1.72	-1.91	-2.70	-2.74
NHPRP $\pm\pi/4$ (dBm)	-7.42	-7.28	-6.81	-6.19	-6.75	-6.71	-6.61	-6.76	-7.03	-7.67	-7.63
NHPRP $\pm\pi/6$ (dBm)	-8.84	-8.69	-8.22	-7.61	-8.14	-8.11	-8.00	-8.15	-8.43	-9.05	-9.00
NHPRP $\pm\pi/8$ (dBm)	-9.86	-9.71	-9.24	-8.63	-9.17	-9.15	-9.04	-9.20	-9.50	-10.09	-10.05
Upper Hem. PRP (dBm)	-9.20	-9.26	-9.02	-8.53	-9.00	-8.92	-8.78	-8.71	-8.58	-9.12	-9.02
Lower Hem. PRP (dBm)	-9.77	-9.89	-9.71	-9.26	-9.79	-9.77	-9.70	-9.68	-9.60	-10.22	-10.14
Upper Hem. PRP (%)	12.01	11.85	12.53	14.04	12.59	12.82	13.24	13.45	13.88	12.23	12.54
Lower Hem. PRP (%)	10.53	10.25	10.70	11.86	10.51	10.54	10.72	10.76	10.96	9.52	9.68

