

UNI-T®



**UTx313M/UTx318M/UTx325M
Quick Start Guide of Thermal
Monocular**

P/N:110401111877X

PREFACE

Thank you for purchasing the new UTx313M/UTx318M/UTx325M Thermal Imaging Monocular. In order to use this product safely and correctly, please read this guide thoroughly, especially the "Cautions" part.

After reading this manual, it is recommended to keep this guide at an easily accessible place, preferably close to the device, for future reference.

LIMITED WARRANTY AND LIABILITY

Uni-Trend guarantees that the product is free from any defect in material and workmanship within one year from the purchase date. This warranty does not apply to damages caused by accident, negligence, misuse, modification, contamination and improper handling. The dealer shall not be entitled to give any other warranty on behalf of Uni-Trend. If you need warranty service within the warranty period, please contact your seller directly.

This warranty is the only compensation you can obtain. Uni-Trend will not be responsible for any special, indirect, incidental or subsequent damage or loss caused by any reason or speculation. As some areas or countries do not allow limitations on implied warranties and incidental or subsequent damage, the above limitation of liability and stipulation may not apply to you.

Cautions

1. Use or store the product at specified operating or storage temperatures to avoid damage.
2. Do not aim the product at strong heat sources, such as sun, laser device, spot-welder, etc.
3. Do not knock, toss, or shake the product and accessories.
4. Do not place the battery in high temperature or close to the high temperature object. Do not short-circuit positive and negative electrodes of the battery. Do not place the battery in a humid environment or in water.
5. Do not use dissolved or similar liquids on the product or cables.
6. Please follow the following instructions to wipe the device:
 - Non-optical surface: If necessary, use a clean and soft cloth to wipe the non-optical surface of the thermal imager.
 - Optical surface: Do not stain the optical surface of lens when using the thermal imager. Especially not to touch lens with hands, cause it may erode the optical coating layer on the glass surface. When the optical surface is stained, wipe it carefully with a special lens paper.
7. Keep it stable when using the device.
8. Please cover lens and package device and its accessories into the carrying box if not needed.
9. Please do not disassemble the device avoiding product damage and loss of warranty rights.
10. Due to different batches, the materials and details of actual products may be slightly different from the graphic information. Please refer to the goods received.
11. The experimental data in the manual are theoretical values and all from Uni-Trend's internal laboratories, for reference only. Customers cannot use them as basis for placing orders. If users have any questions, please contact customer service.

Content

1. Product Introduction	5
2. Packing List	5
3. Product Appearance	5
4. Buttons	6
5. Display	6
6. Shortcut Menu	7
7. Menu	7
8. Mobile APP	9
9. Charge	9
10. Troubleshooting	10
11. FCC Compliance Statement	11
12. Product Label	11

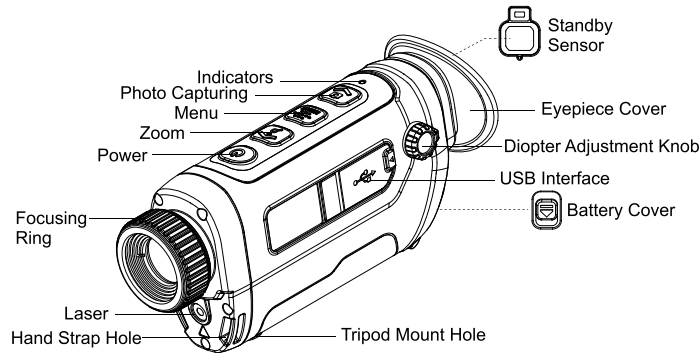
1. Product Introduction

UTx313M/UTx318M/UTx325M Thermal Imaging Monocular has its built-in infrared detector with high sensitivity, widely used in different scenes with its convenient and portable design. It is stable and durable, nice in mid- and long-range observation and outdoor night vision.





2. Packing List

Items	Quantity
Infrared Thermal Imager	1
Data cable	1
Charging Base (UT-Z004)	1
Rechargeable Li-ion Battery (UT-M20)	2
Wrist Strap	1
Hand Strap	1
Cloth Bag	1
Quick Start Guide	1

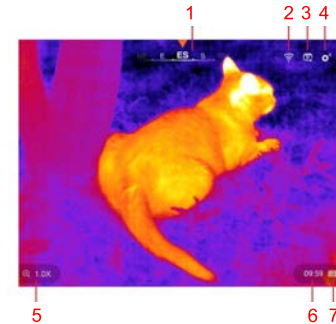
3. Product Appearance



4. Buttons

Buttons	Status	Short Press	Long Press
 Power	Power off	/	Power on
	Main interface	Shutter calibration	Power off
	Menu bar	Return	Power off
 Zoom	Main interface	Digital zoom	Laser on/off
	Menu bar	UP	Up fast
 Menu	Main interface	Open the shortcut menu	Open the menu
	Menu bar	Confirm	Return
 Photo Capturing	Main interface	Photo capturing	Video recording
	Menu bar	Down	Down fast

5. Display



No.	Description	No.	Description
1	E-Compass	5	Zoom
2	Wi-Fi Hotspot	6	Time
3	Video Output	7	Battery Power
4	Calibration Mode		

6. Shortcut Menu



Scene Modes	Bird/Forest/Rock/Custom mode.
Palette	Ironbow, Black Hot, White Hot, Red Hot, Rainbow.
Display Brightness	Level 1-5, adjustable.
PIP	Picture in Picture.
Continuous Digital Zoom	Continuously magnify thermal images
Stadiametric Rangefinder	Get an approximate distance of known target.

7.Menu



Image Setting	Adjustable brightness, contrast, sharpness of thermal images.
Hotspot Tracking	Tracking frame appears on the screen and auto tracks the area with highest temperature.
Digital Compass	Compass appears on the upper of the screen.
WiFi	Turn on the WiFi , After the Wi-Fi is connected, the smartphone APP can be used.

Video Output	Type-C interface connects external display screen with images showed on it, meanwhile, with video output on.
Gallery	Images and video browsing.
Reticle style	Select it to mark icon and color.
Calibration	Automatic shutter/Manual shutter/Background calibration, current calibration icon is showed on the right corner of the main interface.
Settings	Language/Unit/Date/Time/etc.



Languages	English/French/German/Italian/Spanish/Russian/Ukrainian
Unit	m/yd
Date	Date setting
Time	Time setting
Auto Standby	With this function on, auto screen off when you leave the device alone for 30 seconds, but screen on when the device closes to your eyes.
Auto Power	Select Auto OFF time as your need.
Compass Calibration	Calibrate electronic compass to improve its accuracy.
Defect Pixel Calibration	Correct the defect pixel to keep images integrity and clarity.
Factory Reset	Reset the device to factory settings.
Production Information	Check the product model, software version, firmware version, etc.

8. Mobile APP

Step 1

For iOS devices, download & install "Thermal Xplorer" through the Apple App Store. For Android devices, download & install "Thermal Xplorer" through the Google Play Store or Uni-Trend official website.



Step 2

- Turn on Wi-Fi hotspot on the device.
- Search hotspot name "318M_****" on your mobile phone.
- Connect the hotspot by entering the password 12345678.
- Enter the App to get the function of real-time screen transmission, remote viewing and images download, etc.

Note: Please keep the connection range within 10m and no obstacles to ensure the stable data transmission.

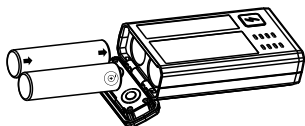
9. Charge

The device is supported for direct charging with 5V/2A power adapter, or charge battery separately with a standard charging base. Indicators identify as followings when use Type-C to charge the device directly.

- With red light on, the device is being charged.
- With green light on, the device is fully charged.

Indicators identify as followings when use a standard charging base to charge the battery separately, assembling the battery as per the shown direction.

- With green light flashing, the device is Being charged.
- With green light on, the device is fully charged.



10. Troubleshooting

Possible problems during the device operation are listed as followings, for your reference if any troubles on the device. If no following problems or the problem cannot be solved by yourself, please contact your supplier.

Troubles	Reasons	Solutions
Fail to enable the device	Low battery	Charging
The device cannot be charged by external power	Loose connection	Plug again
	USB cable damaged	Change another USB cable
Too dark to see thermal images clearly	Low screen light	Improve the screen light
Blurred thermal images, with lines in the images or with uneven images background	Poor calibration	Calibrate the image background as per user manual
	Lens is without focusing	Rotate lens focus ring to make images clear
Interface icon is clear but with blurred images	Dust or freeze on the internal or surface of lens	Wipe the optical surface with a soft cloth, or leave the thermal imager in warm and dry environment for 4 hours.
	Wi-Fi password is incorrect	Enter the correct password
Fail to connect the smartphone	Many Wi-Fi options are within range, be interfered.	Reconnect it within few Wi-Fi options range.
	Without Wi-Fi or connect interrupted	Not in the Wi-Fi coverage, or obstacles exist between device and receiver
Observed target disappears	Observe the target through glasses	Remove glasses in the view
Poor images quality or the detection range is shortened	May be caused by terrible weather (Rain, Snow, Fog, etc.)	
Images quality in low temperature is worse than in normal temperature.	When the temperature is zero above, the observed object (ambience and background) has different temperature rises due to different thermal conductivity, generating a high-temperature contrast, thus with high-quality images. When in the low temperature condition, the observed object (background) cools until its temperature similar to conditions', temperature contrast is sharply decreased, thus with poor-quality images. It is one of the features of thermal imagers.	

11. FCC Compliance Statement

This device complies with Part 15 of the FCC Rules. Operation is subject to the following two conditions: (1) this device may not cause harmful interference, and (2) this device must accept any interference received, including interference that may cause undesired operation.

Please note that changes or modifications of this product is not expressly approved by the party responsible for compliance could void the user's authority to operate the equipment

NOTE: This equipment has been tested and found to comply with the limits for a Class B digital device, pursuant to Part 15 of the FCC Rules. These limits are designed to provide reasonable protection against harmful interference in a residential installation. This equipment generates, uses and can radiate radio frequency energy and, if not installed and used in accordance with the instructions, may cause harmful interference to radio communications.

However, there is no guarantee that interference will not occur in a particular installation. If this equipment does cause harmful interference to radio or television reception, which can be determined by turning the equipment off and on, the user is encouraged to try to correct the interference by one or more of the following measures:

- Reorient or relocate the receiving antenna.
- Increase the separation between the equipment and receiver.
- Connect the equipment into an outlet on a circuit different from that to which the receiver is connected.
- Consult the dealer or an experienced radio/TV technician for help.

12. Product Label



UNI-T®

* The contents of this manual are subject to change without prior notice *

<https://www.uni-trend.com>