

USER MANUAL

SOLAR LANDSCAPE LIGHT



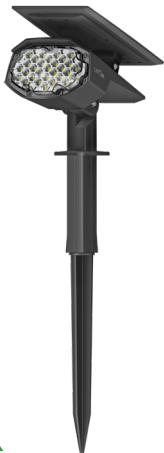
Water
Proof



Heat
Resistance



Frost
Resistance

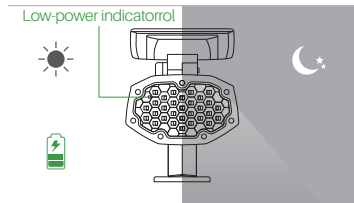


LITON

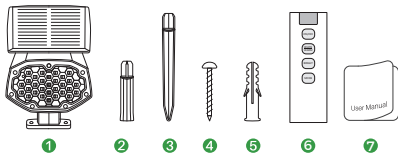
30 LED

INTRODUCTION

The solar Landscape light can automatically detect surrounding brightness: it enters charging mode to convert sunlight to electricity that is stored in the built-in battery in daytime; it automatically lights up at night. It has 10 modes, and you can adjust to a desired mode by pressing the back button of the product or by remote control.



PACKING LIST

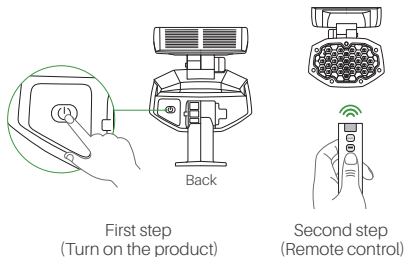


1. Solar Landscape Light
2. Extension stick
3. Ground Stake
4. Screw

5. Wall Plug
6. Remote Control
7. User Manual

OPERATION GUIDE

1. The default mode of the product is OFF mode. When using it for the first time, you must short press the back button of the product to turn on the product before using the remote control!



2. In addition, it should be noted that if the product is turned off through the back button of the product, it is also necessary to turn on the product through the back button of the product before using the remote control. As long as it is not turned off by the back button of the product during later use, it can be directly operated by the remote control, and there is no need to turn on the product by pressing the back button of the product first.

THE OPERATION METHOD OF PRODUCT BACK BUTTON

Mode 1: Low Light

- 1 Short press the power button for once, the landscape light will enter a low white light mode. It will charge but not light up in the day, and it will automatically light up dim white light in darkness or at night.
- 2 Under low white light mode, short press the back button of the product again. The landscape light will enter a low warm light mode. It will charge but not light up in the day, and it will automatically light up dim warm light in darkness or at night.

Mode 2: Medium-Low Light

- 1 Under low warm light mode, short press the back button of the product again. The landscape light will enter a medium-low white light mode. It will charge but not light up in the day, and it will automatically light up medium-low white light in darkness or at night.
- 2 Under medium-low white light mode, short press the back button of the product again. The landscape light will enter a medium-low warm light mode. It will charge but not light up in the day, and it will automatically light up medium-low warm light in darkness or at night.

Mode 3: Medium Light

- 1 Under medium-low warm light mode, short press the back button of the product again. The landscape light will enter a medium white light mode. It will charge but not light up in the day, and it will automatically light up medium white light in darkness or at night.

- ② Under medium white light mode, short press the back button of the product again. The landscape light will enter a medium warm light mode. It will charge but not light up in the day, and it will automatically light up medium warm light in darkness or at night.

Mode 4: High Light

- ① Under medium warm light mode, short press the back button of the product again. The landscape light will enter a high white light mode. It will charge but not light up in the day, and it will automatically light up high white light in darkness or at night.
- ② Under high white light mode, short press the back button of the product again. The landscape light will enter a high warm light mode. It will charge but not light up in the day, and it will automatically light up high warm light in darkness or at night.

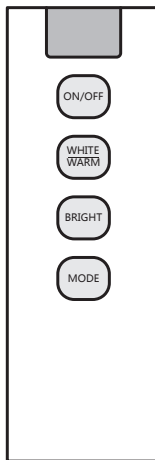
Mode 5: Breathing Light

- ① Under high warm light mode, short press the back button of the product again. The landscape light will enter a breathing white light mode. It will charge but not light up in the day, and it will automatically light up breathing white light in darkness or at night.
- ② Under breathing white light mode, short press the back button of the product again. The landscape light will enter a breathing warm light mode. It will charge but not light up in the day, and it will automatically light up breathing warm light in darkness or at night.

OFF : In any mode, long press the back button of the product for about 2 seconds to turn off the light.

Low-power Indicator : When the low-power indicator flashes red, it indicates that the battery is in low-power state.

REMOTE CONTROL OPERATION INSTRUCTIONS



ON : Short press the button to turn on the light or switch to low white light mode;

OFF : Long press the button to turn off the light.

Color temperature : White light/ warm light

Brightness : Low light, medium-low light, medium light, high light

Mode : Breathing light

NOTE:

1. It is recommended to turn off the light and charge it under direct sunlight for 1-2 days before the first use. Make sure the product has enough power.
2. If you want to check whether the product can work normally or not, please turn it on by pressing the back button, then cover the solar panel with your hands in the daytime or put it in a dark environment.



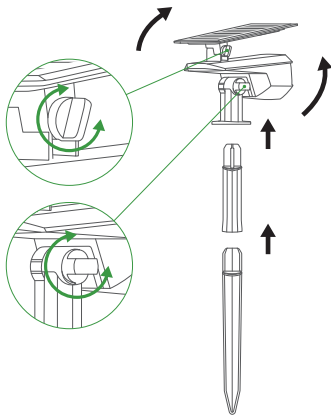
3. When the battery power is very low, the changes of the brightness mode might not be obvious.

INSTALLATION

Press the back button and select a desired mode. Then choose a place that can get enough sunshine to install the light, the longer it gets sunshine, the longer it can illuminate.

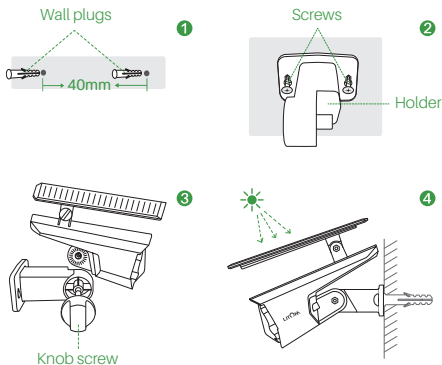
Method 1: Ground Inserted

- 1 Connect the extension stick, ground stake and the light together. Then adjust the angle of solar panel and light head through loosening or tightening the knob screw to get enough sunlight during the day.
- 2 Insert the whole light into the ground vertically.



Method 2: Wall Mounted

- 1 Punch two holes on the wall with a drill and insert the attached wall plugs into the holes. Then, twist the screws through the screw holes of holder into the wall plugs.
- 2 Adjust the angle, then tighten the holder and the light through the knob screw.



FAQ

1. My light doesn't work after being used a few days or months. What happened?

- 1 The built-in battery is out of power, so you need to charge it under direct sunlight where there is no shade or eave can shelter the solar panel.
- 2 If there is no good sunlight for several days (like cloudy, rainy, snowy day), the light will be out of power thus not light up. It will get power if sunny day comes and light up at night after charging in the day.

2. I find one or two products not working when installing multiple products. What happened?

- 1 The built-in battery is out of power, so you need to charge it under direct sunlight where there is no shade or eave can shelter the solar panel.
- 2 If there is no good sunlight for several days (like cloudy, rainy, snowy day), the light will be out of power thus not light up. It will get power if sunny day comes and light up at night after charging in the day.

3. The working time of my solar light is short, what's the problem?

- 1 The more it is charged during the day, the longer it works during the night.
Cloudy, rainy and snowy day will lead to less or no charging, thus the lighting time is short or the light is not bright. After it is fully charged on sunny days, the lighting time will be lengthened.
- 2

- 3 Check whether the solar panel is covered with dusts and clean it regularly.
- 4 The lighting time in winter is shorter than that in summer, because the solar light intensity is weaker and charging time is shorter in winter.

4. The light is waterproof. What causes it waterproof failure?

- 1 When installing or using, if the product falls from a high place, it may cause waterproof failure.
It's subject to high-intensity storms continuously.
- 2 In order to use safely, if you find that the product has waterproof problem, please contact us to replace it in time.

CORRECT DISPOSAL OF THIS PRODUCT



(Waste Electrical & Electronic Equipment)

This marking shown on the product or its literature, indicates that it should not be disposed with other household wastes at the end of its working life.

To prevent possible harm to the environment or human health from uncontrolled waste disposal, please separate this from other types of wastes and recycle it responsibly to promote the sustainable reuse of material resources.

Household user should contact either the retailer where they purchased this product or their local government office for details of where and how they can take this item for environmentally safe recycling.

Business users should contact their supplier and check the terms and conditions of the purchase contract.

This product should not be mixed with other commercial wastes for disposal.

Any Changes or modifications not expressly approved by the party responsible for compliance could void the user's authority to operate the equipment.

This device complies with part 15 of the FCC Rules. Operation is subject to the following two conditions:

- (1) This device may not cause harmful interference, and
- (2) this device must accept any interference received, including interference that may cause undesired operation.

Note: This equipment has been tested and found to comply with the limits for a Class B digital device, pursuant to part 15 of the FCC Rules. These limits are designed to provide reasonable protection against harmful interference in a residential installation. This equipment generates uses and can radiate radio frequency energy and, if not installed and used in accordance with the instructions, may cause harmful interference to radio communications. However, there is no guarantee that interference will not occur in a particular installation. If this equipment does cause harmful interference to radio or television reception, which can be determined by turning the equipment off and on, the user is encouraged to try to correct the interference by one or more of the following measures:

- Reorient or relocate the receiving antenna.
- Increase the separation between the equipment and receiver.
- Connect the equipment into an outlet on a circuit different from that to which the receiver is connected.
- Consult the dealer or an experienced radio/TV technician for help.

>>> THANKS FOR READING!

If you have any questions about our product, be free to contact us.

support@istartop.com