

Arlo Wire-Free Outdoor Siren App Installation Guide

Date: 2023/2/13

Pre-Requisite:

1. Please reference to the Home Security System User Manual as your baseline to start off. Arlo Keypad Hub needs to be onboard first using the Arlo Secure App.

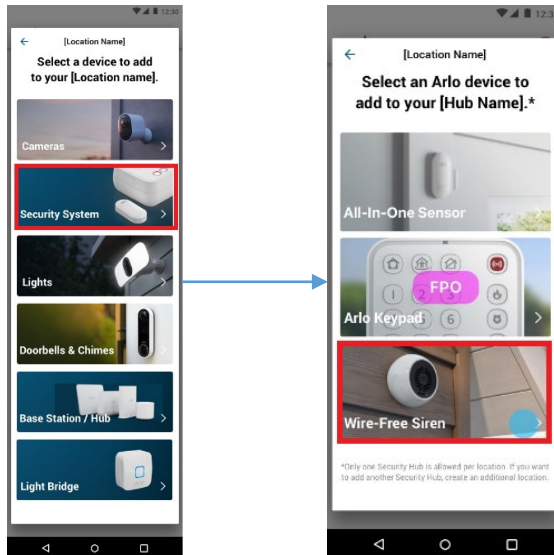


202-50044-01_HomeSecuritySystem_UM_2dec2022.pdf

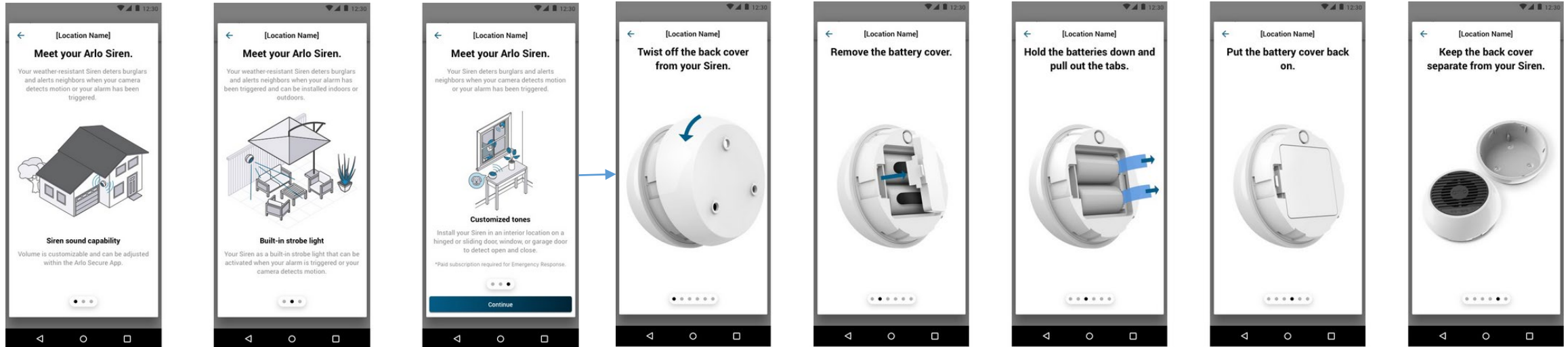
2. The Arlo Wire-Free Outdoor Siren will be onboard to the Arlo Keypad Hub but due to Arlo App still in development phase, the following images provides the onboarding flow and usage of the Arlo Wire-Free Outdoor Siren.

Wire-Free Outdoor Siren – Onboarding

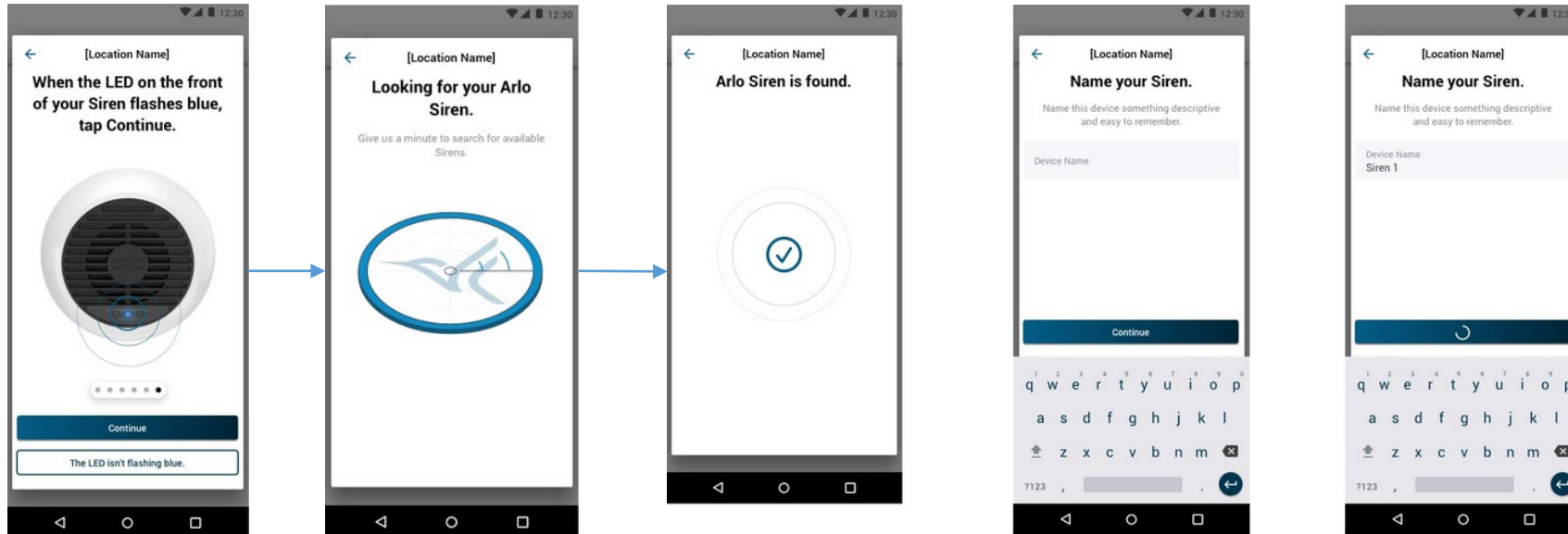
1. From Arlo Secure App → Device → Select the “+”
2. Select “Security System” → “Wire-Free Outdoor Siren”



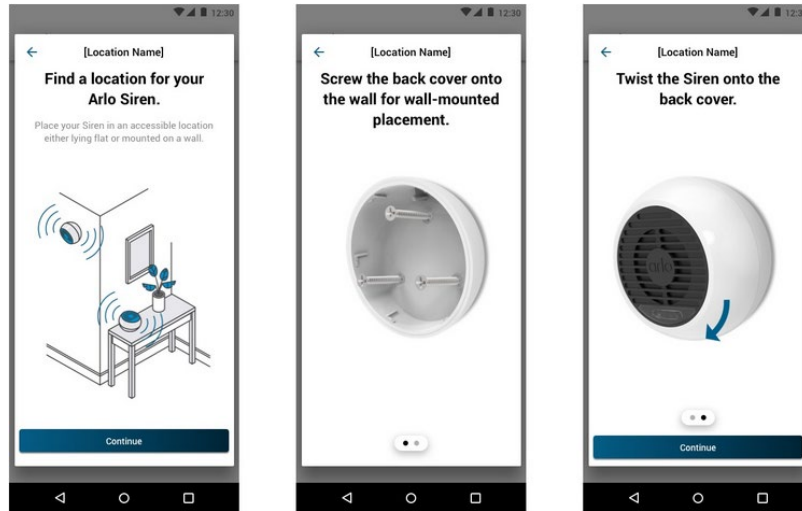
3. Follow the guided on screen to advanced through the onboarding flow



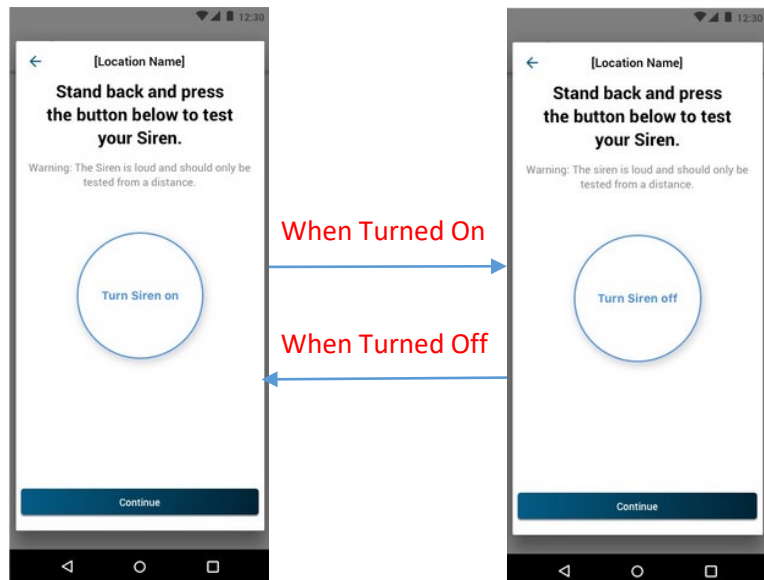
4. Continue to follow the onboarding flow



5. Continue to follow the onboarding flow



6. Continue to follow the onboarding flow – Testing Siren/Strobe Light On/Off

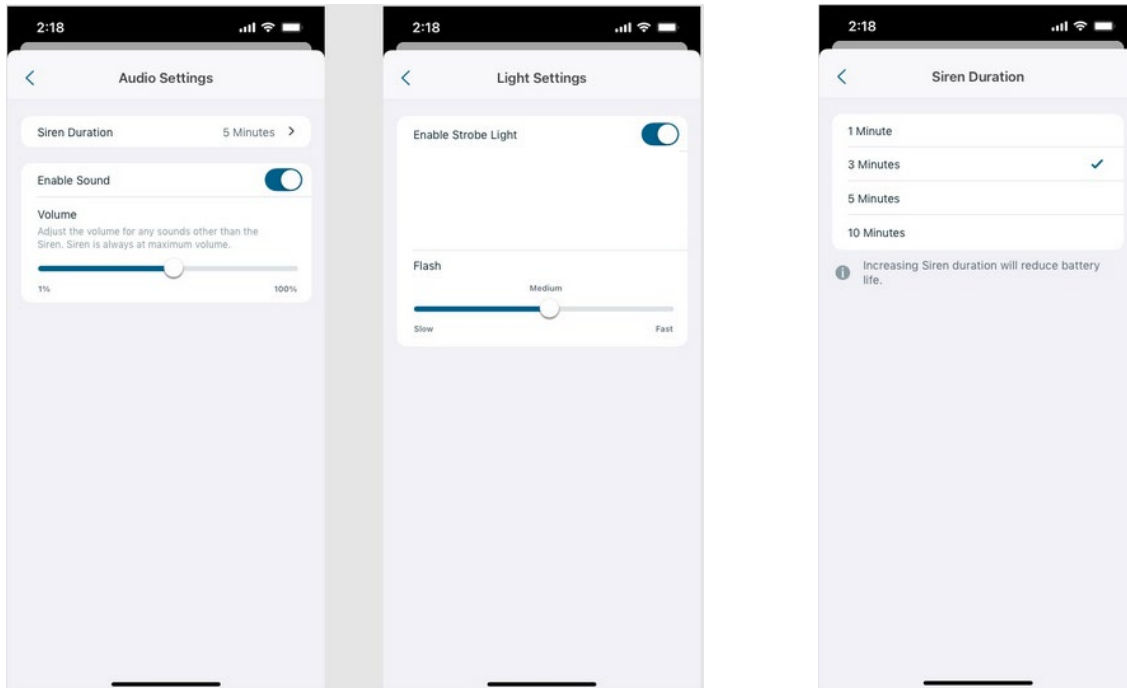


7. Onboarding Successfully



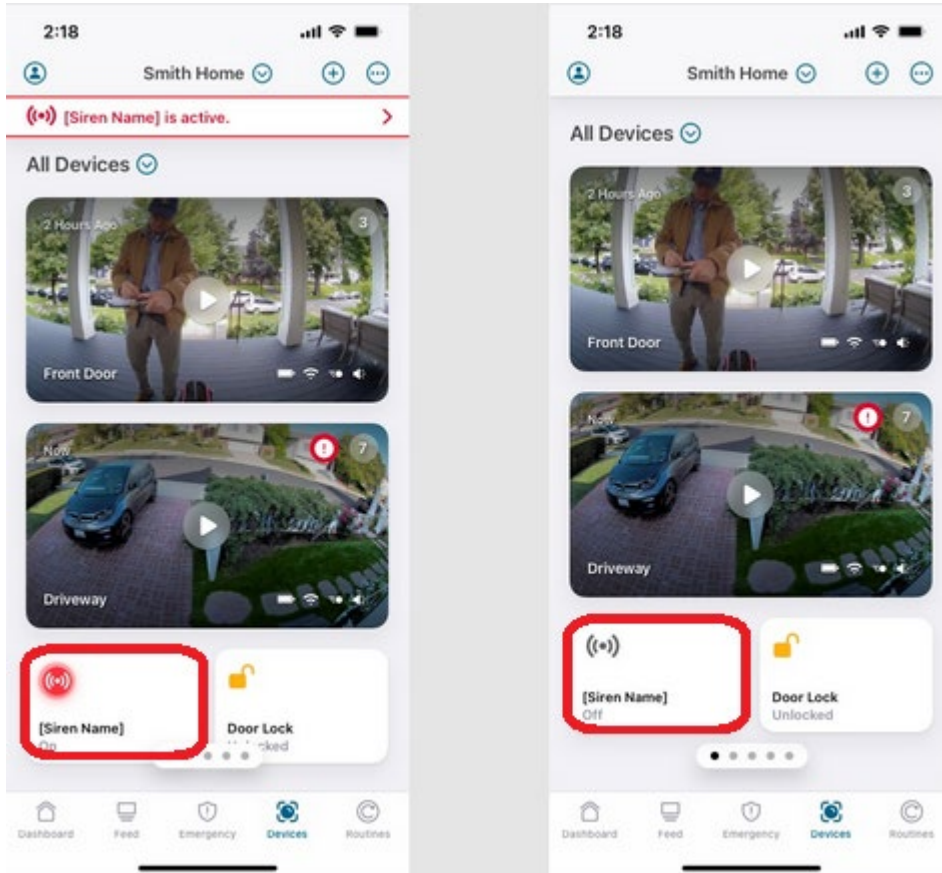
Wire-Free Outdoor Siren – Audio and Strobe Light Settings

1. Wire-Free Outdoor Siren device setting, there are three options;
 - Siren (Sound) Only
 - Strobe Light Only
 - Both Siren (Sound) and Strobe Light On
2. User is able to select the Siren duration



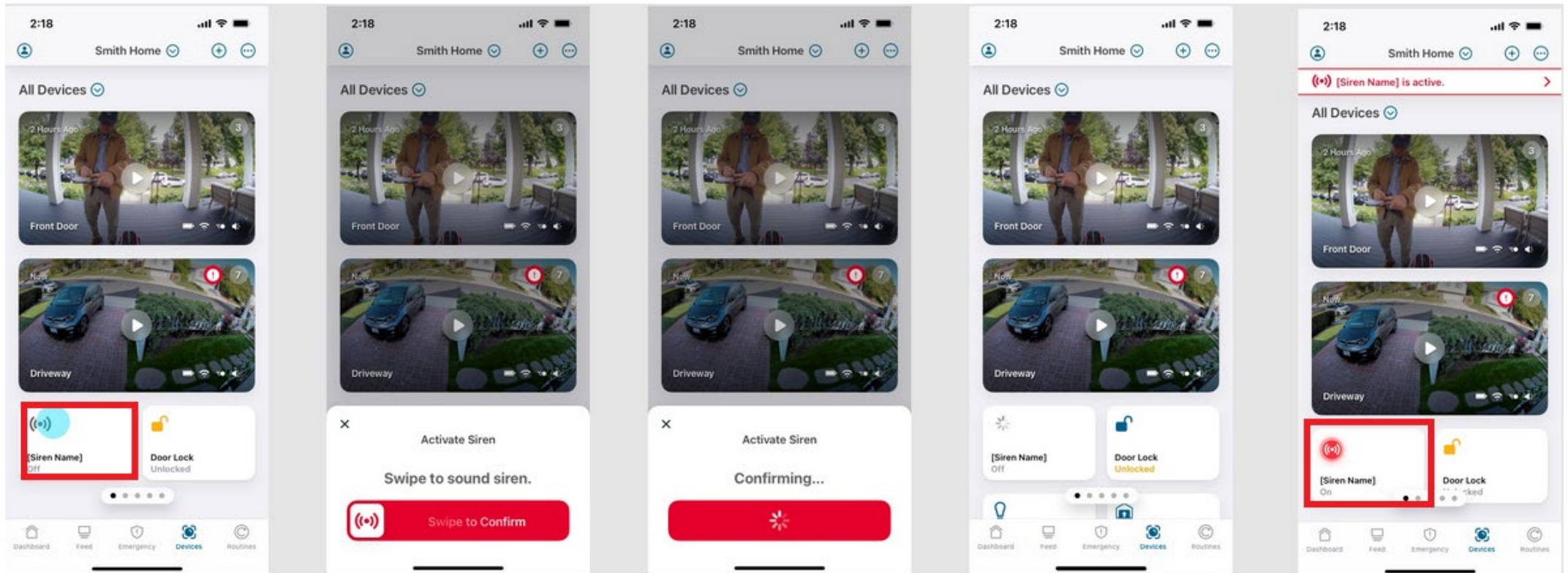
Wire-Free Outdoor Siren – Activate the Siren/Strobe

1. To deactivate the siren/strobe light, under the Device/Dashboard → find the Siren card → tap on the siren button
2. Siren will deactivate with icon will not be in red



Wire-Free Outdoor Siren – Deactivate the Siren/Strobe

1. To activate the siren/strobe light, under the Device/Dashboard → find the Siren card → tap on the siren button
2. Swipe to sound the siren (sound).
3. Siren is active with red icon showing



Federal Communication Commission Interference Statement:

This equipment has been tested and found to comply with the limits for a Class B digital device, pursuant to part 15 of the FCC Rules. These limits are designed to provide reasonable protection against harmful interference in a residential installation. This equipment generates, uses and can radiate radio frequency energy and, if not installed and used in accordance with the instructions, may cause harmful interference to radio communications. However, there is no guarantee that interference will not occur in a particular installation. If this equipment does cause harmful interference to radio or television reception, which can be determined by turning the equipment off and on, the user is encouraged to try to correct the interference by one or more of the following measures:

- Reorient or relocate the receiving antenna.
- Increase the separation between the equipment and receiver.
- Connect the equipment into an outlet on a circuit different from that to which the receiver is connected.
- Consult the dealer or an experienced radio/TV technician for help.

Any changes or modifications not expressly approved by the party responsible for compliance could void your authority to operate the equipment.

RF exposure statements

This Transmitter must not be co-located or operating in conjunction with any other antenna or transmitter.

This equipment complies with FCC RF radiation exposure limits set forth for an uncontrolled environment. This equipment should be installed and operated with a minimum distance of 20 centimeters between the radiator and your body or nearby persons.

Industry Canada statement:

This device complies with Industry Canada license-exempt RSSs. Operation is subject to the following two conditions:

- 1) This device may not cause interference, and
- 2) This device must accept any interference, including interference that may cause undesired operation of the device.

Le présent appareil est conforme aux CNR d'Industrie Canada applicables aux appareils radio exempts de licence. L'exploitation est autorisée aux deux conditions

suivantes :

- 1) l'appareil ne doit pas produire de brouillage;
- 2) l'utilisateur de l'appareil doit accepter tout brouillage radioélectrique subi, même si le brouillage est susceptible d'en compromettre le fonctionnement.

Radiation Exposure Statement:

This equipment complies with IC radiation exposure limits set forth for an uncontrolled environment. This equipment should be installed and operated with minimum distance 20cm between the radiator & your body.

Déclaration d'exposition aux radiations:

Cet équipement est conforme aux limites d'exposition aux rayonnements IC établies pour un environnement non contrôlé. Cet équipement doit être installé et utilisé avec un minimum de 20 cm de distance entre la source de rayonnement et votre corps.