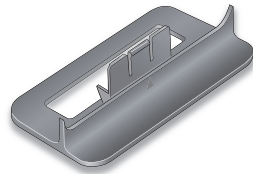


ADT Pulse® Interactive Solutions
Model: ADT Pulse Gateway PGZNG1

Package Contents



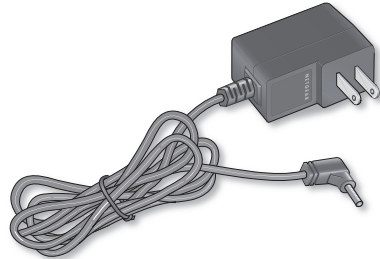
Gateway



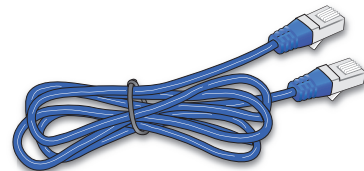
Stand



Wall Mount Kit



Power Adapter



Ethernet Cable

Warning: Do not stack equipment, or place equipment in tight spaces, in drawers, or on carpets. Make sure that your equipment is surrounded by at least 2 inches (5 centimeters) of air space.

Connecting the Gateway

1. Verify the package contents.
2. Decide where to place the Gateway.

Note: For best Wi-Fi coverage, identify a relatively central location within the premises. Ensure that the Gateway can be conveniently wired to both the broadband router and security panel, and is close to an AC outlet.

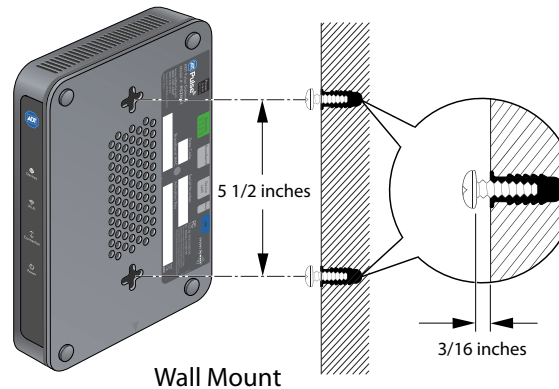
3. Install the Gateway in the proper orientation:
 - Mount vertically (using the stand or wall mount kit) if the security panel and most devices are on the same floor as the Gateway.
 - Place horizontally if the security panel, devices and Gateway occupy multiple floors.



Vertical Mount

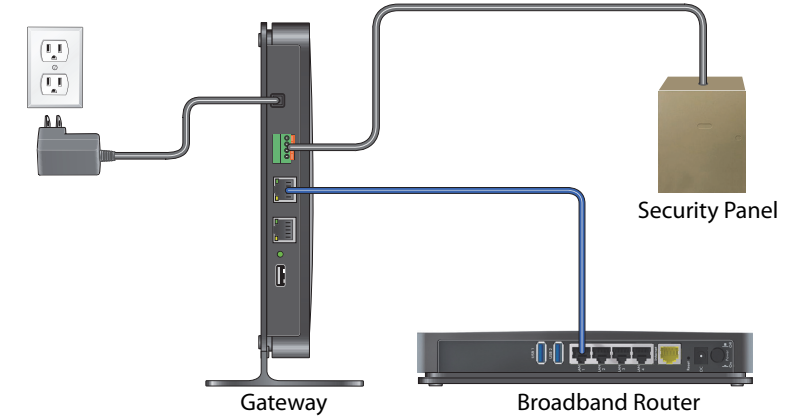


Horizontal Mount

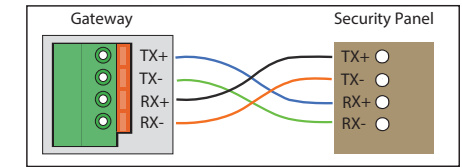


Wall Mount

4. Connect the cables following steps a through d below.



- a. Use a 4-wire cable to connect the Security Panel to the Security connector on the Gateway.







Notes:

- The security panel connection requires one of the following: Honeywell HSPIM, DSC Communicator Module, GE Automation Module.
 - Wiring: Tx(-) to Rx(-), Tx(+) to Rx(+), Rx(-) to Tx(-), Rx(+) to Tx(+).
 - Wires must be stripped and seated deeply in terminal connection points.
- b. Connect an Ethernet cable from one of the open ports of the broadband router to the Broadband Ethernet port of the Gateway.
 - c. Pull wires gently to verify that Gateway connections are secure.
 - d. Plug the power cord into the Gateway and then plug the power adapter into an AC outlet.
5. Wait until the Power and Devices LEDs on the Gateway become solid green (this could take a few minutes).
 6. To begin the installation process, go to <https://portal.adtpulse.com/activation> and use installer credentials to log into the ADT Pulse system.

Troubleshooting

Use the LEDs on the front of the Gateway to determine its status and to troubleshoot its operation.

| LED | Description |
|------------------------------------------------------------------------------------------------|-----------------------------------------------------------------------------------------------------------------------------------------------------------------------------------------------------------------------------------------------------------------------------------------------------------------------------------------------------------------------------------------------------------------------------------------------------------------------------------------------------------------------------------------------------------------------------------------------------------------------------------------------------------------------------------------------------------------------------------|
|  Devices | <ul style="list-style-type: none"> • Solid green: Gateway is able to communicate with all devices. • Blinking green: All devices are OK, and Gateway is communicating with a device. • Solid amber: Gateway is unable to communicate with a device. • Blinking amber: Gateway is unable to communicate with a device, but communication with at least one other device is occurring. • Solid red: Gateway is unable to communicate with the security panel. • Blinking red: Gateway is unable to communicate with the security panel, but device traffic is occurring. • Off: Gateway is still starting up. |
|  Wi-Fi | <ul style="list-style-type: none"> • Solid green: Gateway is linked with Wi-Fi clients. • Blinking green: Data is being transmitted or received over Wi-Fi. • Off: Wi-Fi is not enabled or there are no Wi-Fi devices installed. |
|  Connection | <ul style="list-style-type: none"> • Solid green: Gateway is connected for remote interactive services. • Pulsing green: Gateway is establishing a connection for remote interactive services. • Blinking green: Data is being transmitted for remote interactive services. • Solid amber: Gateway is waiting to reconnect for remote interactive services. • Pulsing amber: Gateway is trying to reconnect for remote interactive services. • Solid red: Gateway is unable to connect for remote interactive services. • Off: Gateway is still starting up or activation has not been completed. |
|  Power | <ul style="list-style-type: none"> • Solid green: Gateway is powered on. • Blinking green: Gateway is starting up. • Blinking amber: Gateway firmware is being downloaded. • Off: Gateway is powered off. |

Technical Specifications

| | |
|-------------------------|--------------------------------------------------------------------------------------------------------------------------------------------------------------------------------------------------------------------------------------------------------------------------|
| Power adapter | <ul style="list-style-type: none"> • North America (input): 120V, 60 Hz, input • All regions (output): 12 V DC @ 1A output 15W maximum |
| Physical specifications | <ul style="list-style-type: none"> • Dimensions: 8.5 by 5.75 by 1.3 in (216 by 146 by 33 mm) • Weight: 0.95 lb (0.42 kg) |
| Environmental | <ul style="list-style-type: none"> • Operating temperature: 32° to 104° F (0° to 40° C) • Operating humidity: 90% maximum relative humidity, noncondensing • Electromagnetic emissions: Meets requirements of: FCC Part 15 Class B. |

FCC Requirements for Operation in the United States

FCC Information to User

This product does not contain any user serviceable components and is to be used with approved antennas only. Any product changes or modifications will invalidate all applicable regulatory certifications and approvals.

FCC Guidelines for Human Exposure

This equipment complies with FCC radiation exposure limits set forth for an uncontrolled environment. This equipment should be installed and operated with minimum distance of 20 cm between the radiator and your body.

This transmitter must not be co-located or operating in conjunction with any other antenna or transmitter.

FCC Declaration of Conformity

We, Arlo Technologies, Inc., 2200 Faraday Ave. Suite 150, Carlsbad, CA 92008, declare under our sole responsibility that the ADT Pulse® Interactive Solutions complies with Part 15 Subpart B of FCC CFR47 Rules. Operation is subject to the following two conditions:

- This device may not cause harmful interference, and
- This device must accept any interference received, including interference that may cause undesired operation.

FCC Radio Frequency Interference Warnings & Instructions

This equipment has been tested and found to comply with the limits for a Class B digital device, pursuant to Part 15 of the FCC Rules. These limits are designed to provide reasonable protection against harmful interference in a residential installation. This equipment uses and can radiate radio frequency energy and, if not installed and used in accordance with the instructions, may cause harmful interference to radio communications. This certification does not guarantee that interference will not occur in a particular installation. If this equipment does cause harmful interference to radio or television reception, which can be determined by turning the equipment off and on, the user is encouraged to try to correct the interference by one or more of the following methods:

- Reorient or relocate the receiving antenna.
- Increase the separation between the equipment and the receiver.
- Connect the equipment into an electrical outlet on a circuit different from that which the radio receiver is connected.

FCC Caution

- Any changes or modifications not expressly approved by the party responsible for compliance could void the user's authority to operate this equipment.
- This device complies with Part 15 of the FCC Rules. Operation is subject to the following two conditions: (1) This device may not cause harmful interference, and (2) this device must accept any interference received, including interference that may cause undesired operation.
- For product available in the USA market, only channel 1~11 can be operated. Selection of other channels is not possible.
- This device and its antenna(s) must not be co-located or operated in conjunction with any other antenna or transmitter.

Canadian Department of Communications Radio Interference Regulations

This digital apparatus (ADT Pulse® Interactive Solutions) does not exceed the Class B limits for radio-noise emissions from digital apparatus as set out in the Radio Interference Regulations of the Canadian Department of Communications.

This Class [B] digital apparatus complies with Canadian ICES-003.

Cet appareil numérique de la classe [B] est conforme à la norme NMB-003 du Canada.

Industry Canada statement:

This device complies with ISED's licence-exempt RSSs. Operation is subject to the following two conditions: (1) This device may not cause harmful interference, and (2) this device must accept any interference received, including interference that may cause undesired operation.

Le présent appareil est conforme aux CNR d'ISED applicables aux appareils radio exempts de licence. L'exploitation est autorisée aux deux conditions suivantes : (1) le dispositif ne doit pas produire de brouillage préjudiciable, et (2) ce dispositif doit accepter tout brouillage reçu, y compris un brouillage susceptible de provoquer un fonctionnement indésirable.

Radiation Exposure Statement:

This equipment complies with ISED radiation exposure limits set forth for an uncontrolled environment. This equipment should be installed and operated with greater than 24cm between the radiator & your body.

Déclaration d'exposition aux radiations:

Cet équipement est conforme aux limites d'exposition aux rayonnements ISED établies pour un environnement non contrôlé. Cet équipement doit être installé et utilisé à plus de 24 cm entre le radiateur et votre corps.



201-15405-04



November 2018