



arlo[®]

Arlo Pro 2
Quick Start Guide





What's in the box



Arlo base station



Base station AC power adapter



Ethernet cable



Arlo Pro 2 camera



Rechargeable battery



Camera power adapter



Camera cable



Wall mount



Mounting screws and anchors

Meet your Arlo Pro 2

You can use your camera wirelessly on battery power, or while plugged into an AC power outlet. Plugging in your camera unlocks more features.

When your camera detects motion, it uses a WiFi connection to your Arlo Pro base station to stream video to your Arlo account in the cloud.

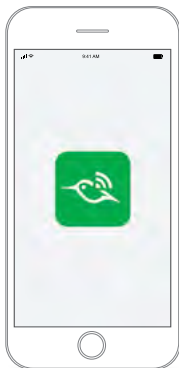


Your Arlo Pro 2 system includes the following:

- **Arlo app and Arlo account.** Use the Arlo app to set up and manage your Arlo account and devices.
- **Base station.** The base station connects to the Internet and streams your camera feeds to your Arlo account in the cloud.
- **Arlo Pro 2 cameras.** Set up your cameras to detect motion and sound based on a schedule or all the time. Your cameras come with these accessories:
 - **Rechargeable battery.** When you use your camera wirelessly, it runs on battery power.
 - **AC power adapter.** Connect your camera to an indoor electrical outlet to unlock more features and charge the battery. (The outdoor AC power adapter is sold separately.)
 - **Mounts.** Use wall mounts to place your cameras.

Get the Arlo mobile app

You must use the app to install your Arlo Pro 2 System. The app provides step-by-step instructions.



Install your Arlo devices in this order

1



Arlo Pro base station

2

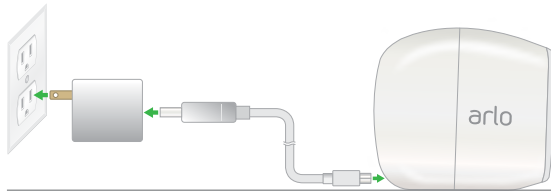


Arlo Pro 2 cameras

Power your camera

Your camera comes with accessories that you can use to create a custom security system to meet your individual needs.

- Insert and charge the battery.



Before you use your camera wirelessly, we recommend that you charge the battery.

- For AC power indoor use, connect the AC power adapter to an indoor electrical outlet.
- If you want to use an outdoor AC power connection, you need the Arlo Pro 2 outdoor power adapter (sold separately).

Place or mount your camera

You can place your camera on a flat surface or you can mount it on a wall. Choose a location with a clear, unblocked field of view and with a good signal to your base station.

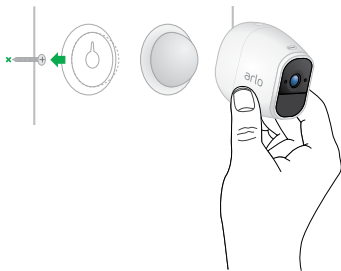
Note: WiFi range can be affected by building materials or objects that block WiFi signals and by interference from other WiFi networks.

➤ To use the wall mount:

1. Fasten the mounting screw into the wall.

If you're mounting the camera on drywall, use the plastic drywall anchors we provide.

2. Hang the mount from the screw.



You're done!

Use the Arlo app to see your camera feed, to arm and disarm your camera, and more.

Tip: Use the Arlo app in Position mode (found in Camera Settings) to help aim your camera.



©2018 Arlo Technologies, Inc. Arlo, Arlo logo, and Every Angle Covered are trademarks of Arlo Technologies, Inc. .
Other trademarks are for reference purposes only.

Si ce produit est vendu au Canada, vous pouvez accéder à ce document en français canadien à arlo.com/docs.
(If this product is sold in Canada, you can access this document in Canadian French at arlo.com/docs.)

For regulatory compliance information, visit www.netgear.com/about/regulatory/.



Arlo International, Ltd.
Floor 3, Building 3 University Technology Center
Curraheen Road, Cork, Ireland

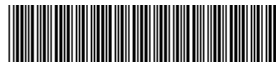


Arlo Technologies, Inc.
2200 Faraday Ave. Suite 150
Carlsbad, CA 92008 USA

www.arlo.com

www.arlo.com/support

August 2018



201-24186-01

Federal Communication Commission Interference Statement

This device complies with Part 15 of the FCC Rules. Operation is subject to the following two conditions: (1) This device may not cause harmful interference, and (2) this device must accept any interference received, including interference that may cause undesired operation.

This equipment has been tested and found to comply with the limits for a Class B digital device, pursuant to Part 15 of the FCC Rules. These limits are designed to provide reasonable protection against harmful interference in a residential installation. This equipment generates, uses and can radiate radio frequency energy and, if not installed and used in accordance with the instructions, may cause harmful interference to radio communications. However, there is no guarantee that interference will not occur in a particular installation. If this equipment does cause harmful interference to radio or television reception, which can be determined by turning the equipment off and on, the user is encouraged to try to correct the interference by one of the following measures:

- Reorient or relocate the receiving antenna.
- Increase the separation between the equipment and receiver.
- Connect the equipment into an outlet on a circuit different from that to which the receiver is connected.
- Consult the dealer or an experienced radio/TV technician for help.

FCC Caution: Any changes or modifications not expressly approved by the party responsible for compliance could void the user's authority to operate this equipment.

This transmitter must not be co-located or operating in conjunction with any other antenna or transmitter.

Radiation Exposure Statement:

This equipment complies with FCC radiation exposure limits set forth for an uncontrolled environment. This equipment should be installed and operated with minimum distance 20cm between the radiator & your body.

Industry Canada statement:

This device complies with ISED's licence-exempt RSSs. Operation is subject to the following two conditions: (1) This device may not cause harmful interference, and (2) this device must accept any interference received, including interference that may cause undesired operation.

Le présent appareil est conforme aux CNR d'ISED applicables aux appareils radio exempts de licence. L'exploitation est autorisée aux deux conditions suivantes : (1) le dispositif ne doit pas produire de brouillage préjudiciable, et (2) ce dispositif doit accepter tout brouillage reçu, y compris un brouillage susceptible de provoquer un fonctionnement indésirable.

Radiation Exposure Statement:

This equipment complies with ISED radiation exposure limits set forth for an uncontrolled environment. This equipment should be installed and operated with greater than 23cm between the radiator & your body.

Déclaration d'exposition aux radiations:

Cet équipement est conforme aux limites d'exposition aux rayonnements ISED établies pour un environnement non contrôlé. Cet équipement doit être installé et utilisé à plus de 23 cm entre le radiateur et votre corps.