

arlo™

Arlo Pro Quick Start Guide





## Welcome

Thank you for choosing Arlo Pro.  
Getting started is easy.

## What's Included



Base station



Base station AC power adapter



Ethernet cable



Arlo Pro Wire-Free camera



Rechargeable battery



Camera AC power adapter



Camera power adapter cable



Magnetic wall mounts



Mounting screws

## 1 Insert the Battery Into Your Camera

- a. Unlock the battery compartment by pressing and holding the latch.
- b. Gently pull the battery door back to open the compartment.



- c. Align the battery contacts.
- d. Insert the battery.



- e. Close the battery door.



**Note:** The Arlo Pro battery is fully charged when it leaves the factory.

## 2 Get the App

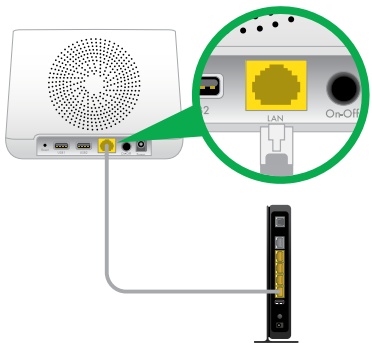
For the best experience, download the Arlo app for your smartphone by scanning this QR code or searching for Arlo in the app store.



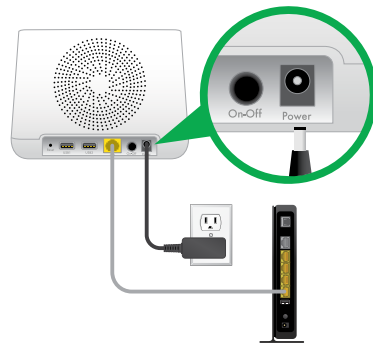
**Note:** If you already use the Arlo app, make sure that you are using the latest version. To find out if an update is available, go to the app store and search for Arlo.

### 3 Connect Your Base Station to the Internet

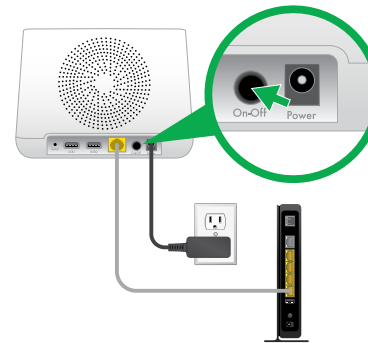
a. Connect the base station to your router using an Ethernet cable.



b. Connect the base station AC adapter to your base station and plug it in.



c. Turn the base station on by pressing the **On/Off** button.



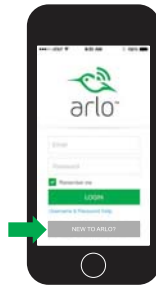
The Power LED and Internet LED on the front of the base station light green in about two minutes.



## 4 Get an Account

### ➤ To create a new Arlo account:

- Launch the Arlo app from your smartphone, tap the **New to Arlo?** button, and select **Arlo Pro**.  
If you are using a computer,
- Follow the onscreen instructions.



### ➤ To add an Arlo Pro camera to an existing Arlo account:

- If you already set up an Arlo account, log in, and click or tap **Add Device**.
- Follow the onscreen instructions.

## 5 Sync Your Cameras With the Base Station

- Bring the camera within 1 to 3 feet (30 to 100 centimeters) of the base station.

**Note:** Cameras must be synced one at a time.



- b. Press the **Sync** button on the top of the base station for about two seconds and then release the button.



- c. Wait for the Sync Status LED to blink green.
- d. Press the **Sync** button on top of the camera for about two seconds and then release the button.



A blue LED on the camera blinks slowly when the sync process starts. The blue LED blinks rapidly to confirm syncing.



The camera is ready for viewing.

The LED blinks amber if the sync is not successful. You must repeat the sync process.

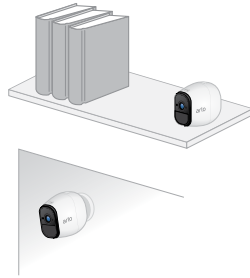
### Syncing more than one camera?

Go to Page 9 and repeat steps 5a through 5d for each camera.

## 6 Place or Mount Your Cameras

You can place your camera on a shelf or other flat surface, or you can mount it to the wall.

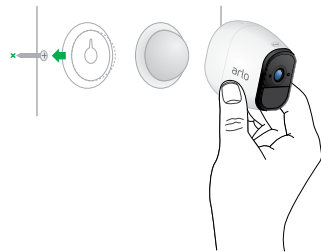
**Tip:** Use the Arlo app in Position mode (found in Camera Settings) to help aim the camera.



### ➤ To mount your camera to the wall:

Fasten the mounting screw into the wall, and hang the magnetic mount from the screw.

If you're mounting the camera to drywall, be sure to use the plastic drywall anchors that are provided.



## 7 Charge Your Arlo Pro Battery

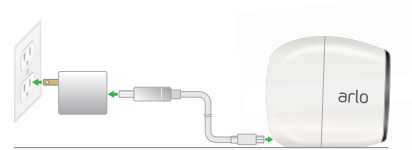
The Arlo Pro battery is fully charged when it leaves the factory.

### ➤ To recharge the battery:

- Place the camera indoors. If you are using the camera outside, bring it inside while charging the battery.
- Connect the power adapter cable to the camera power adapter.

**Note:** You must use an Arlo Pro power adapter and cable to charge the battery.

- Connect the other end of the adapter cable to the camera.
- Plug the power adapter into an electrical outlet.



The camera LED lights solid blue when the camera battery is fully charged.



# You're Done!

Congratulations! Your Arlo System is set up and ready to go.

To view useful tutorial videos, find troubleshooting tips, or get support, visit <https://www.arlo.com/support/>.

# Base Station LED Guide



## Power

**Green**  
The base station is powered on.

**Blinking green**  
A firmware update is in progress. DO NOT TURN OFF THE BASE STATION OR CAMERAS.

**Amber**  
The base station is booting.

**Off**  
The base station is powered off.

## Internet

**Green**  
The base station is connected to the Internet.

**Blinking green**  
The base station is sending or receiving data over the Internet.

**Amber**  
The base station is connected to the router but did not establish an Internet connection.

**Off**  
The base station is not connected to your router.

## Camera

**Green**  
Cameras are connected to the base station.

**Blinking green**  
The base station is attempting to sync with a camera.

**Blinking amber**  
A camera is too far from the base station. Signal strength is weak.

**Off**  
No cameras are detected.



## Compliance

For the current EU Declaration of Conformity, visit

For regulatory compliance information, visit

December 2016



201-20408-03

## **Federal Communication Commission Interference Statement**

This device complies with Part 15 of the FCC Rules. Operation is subject to the following two conditions: (1) This device may not cause harmful interference, and (2) this device must accept any interference received, including interference that may cause undesired operation.

This equipment has been tested and found to comply with the limits for a Class B digital device, pursuant to Part 15 of the FCC Rules. These limits are designed to provide reasonable protection against harmful interference in a residential installation. This equipment generates, uses and can radiate radio frequency energy and, if not installed and used in accordance with the instructions, may cause harmful interference to radio communications. However, there is no guarantee that interference will not occur in a particular installation. If this equipment does cause harmful interference to radio or television reception, which can be determined by turning the equipment off and on, the user is encouraged to try to correct the interference by one of the following measures:

- Reorient or relocate the receiving antenna.
- Increase the separation between the equipment and receiver.
- Connect the equipment into an outlet on a circuit different from that to which the receiver is connected.
- Consult the dealer or an experienced radio/TV technician for help.

FCC Caution: Any changes or modifications not expressly approved by the party responsible for compliance could void the user's authority to operate this equipment.

This transmitter must not be co-located or operating in conjunction with any other antenna or transmitter.

**Radiation Exposure Statement:**

This equipment complies with FCC radiation exposure limits set forth for an uncontrolled environment. This equipment should be installed and operated with minimum distance 20cm between the radiator & your body.

**Industry Canada statement:**

This device complies with ISED's licence-exempt RSSs. Operation is subject to the following two conditions: (1) This device may not cause harmful interference, and (2) this device must accept any interference received, including interference that may cause undesired operation.

Le présent appareil est conforme aux CNR d'ISED applicables aux appareils radio exempts de licence. L'exploitation est autorisée aux deux conditions suivantes : (1) le dispositif ne doit pas produire de brouillage préjudiciable, et (2) ce dispositif doit accepter tout brouillage reçu, y compris un brouillage susceptible de provoquer un fonctionnement indésirable.

**Radiation Exposure Statement:**

This equipment complies with ISED radiation exposure limits set forth for an uncontrolled environment. This equipment should be installed and operated with minimum distance 20cm between the radiator & your body.

**Déclaration d'exposition aux radiations:**

Cet équipement est conforme aux limites d'exposition aux rayonnements ISED établies pour un environnement non contrôlé. Cet équipement doit être installé et utilisé avec un minimum de 20 cm de distance entre la source de rayonnement et votre corps.