

Quick Configuration Guide
for Wi-Fi Bullet Camera
—G3S2

Thank you for choosing Worthcloud

Worthcloud makes life simple and secure. Just follow the instruction to configure your camera and start your easy life now!

1. Download and install the Yocam App

- 1) Prepare a mobile phone with the system of android 2.3 or higher/IOS 7.7 or higher.
- 2) Scan the QR code below or search for Yocam in the App Store or Google Play to download and install it.



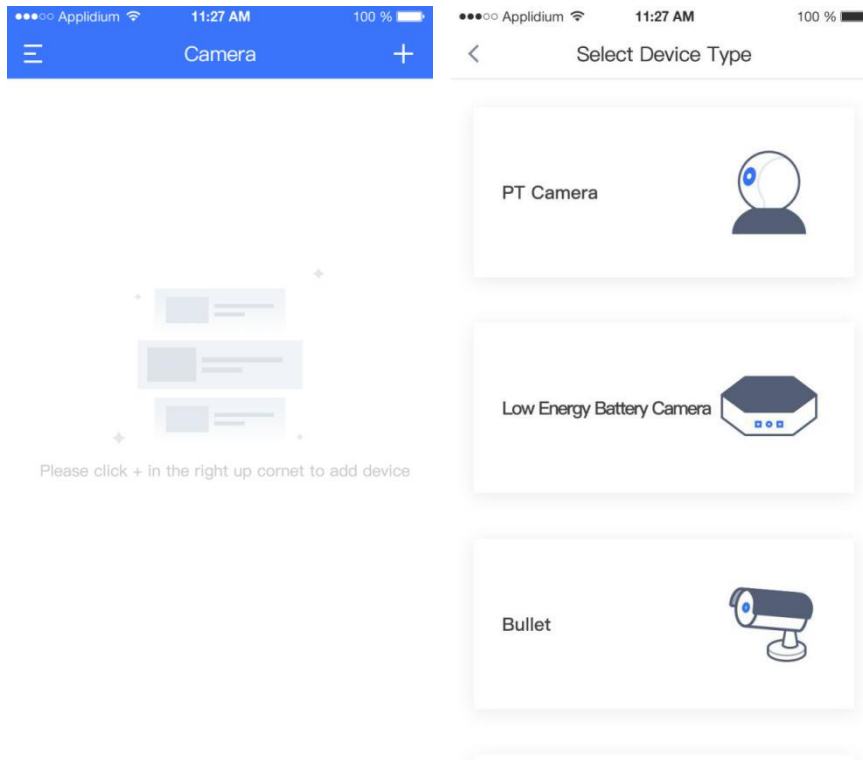
iOS



Android

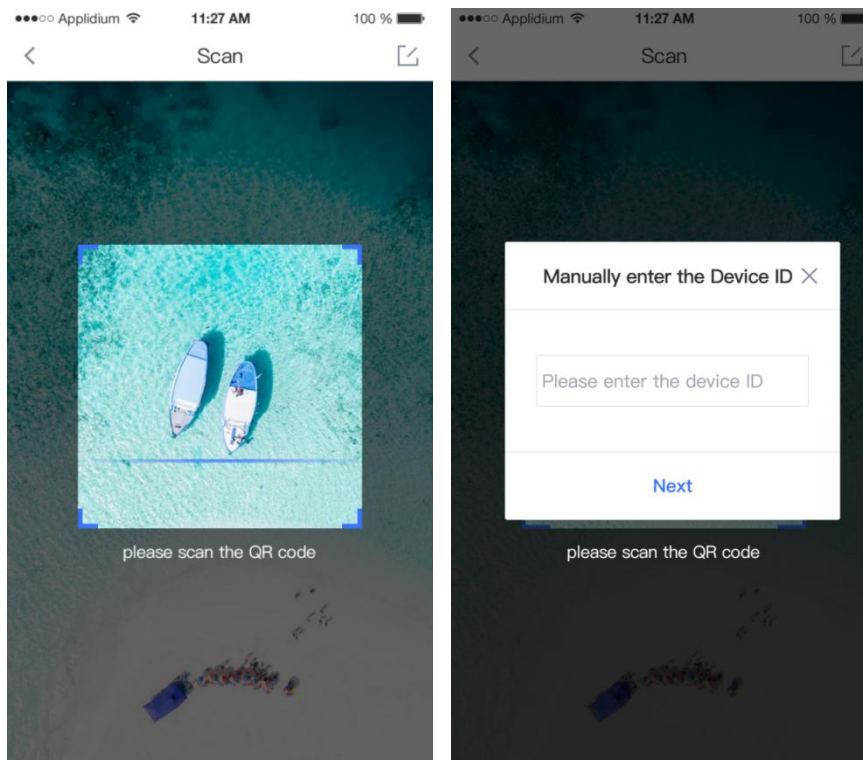
2. Configure the camera with the Yocam App

- 1) Connect your mobile phone to a WIFI network.
- 2) Open the Yocam App, register an account and log in.
- 3) Click the “+” icon on the upper right corner of the page and then select the Bullet camera.

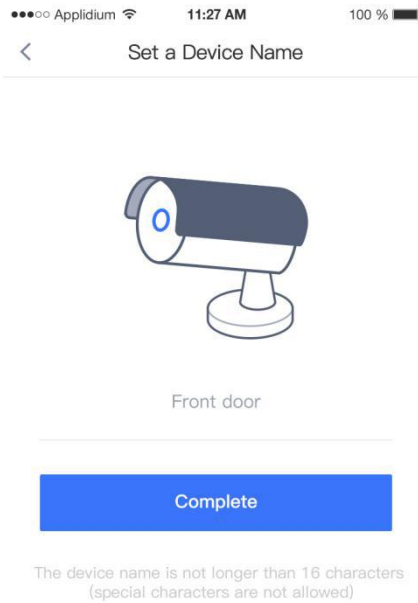


4) Power on the camera, connect it to the router via an Ethernet cable and make sure the Internet is working fine.

5) Scan the QR code posted on the camera; or click the “Edit” button on the upper right corner to manually enter the camera ID and then click “Next”.

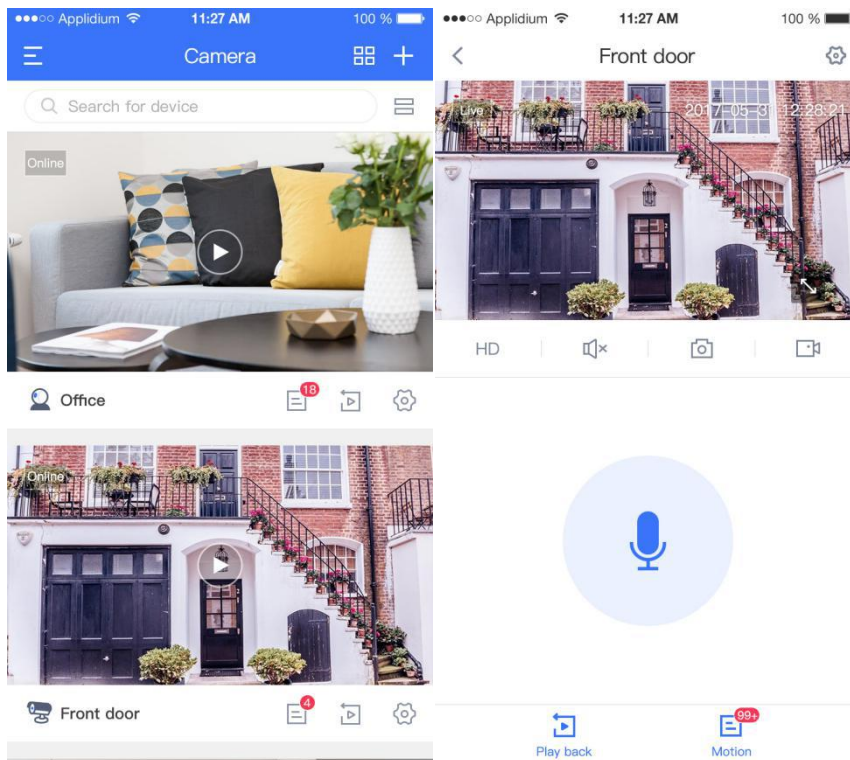


6) Set a name for the camera and click on the complete button.



3. Real Time Video Preview

Choose the camera that you want to preview in the home page and you will see the live view.

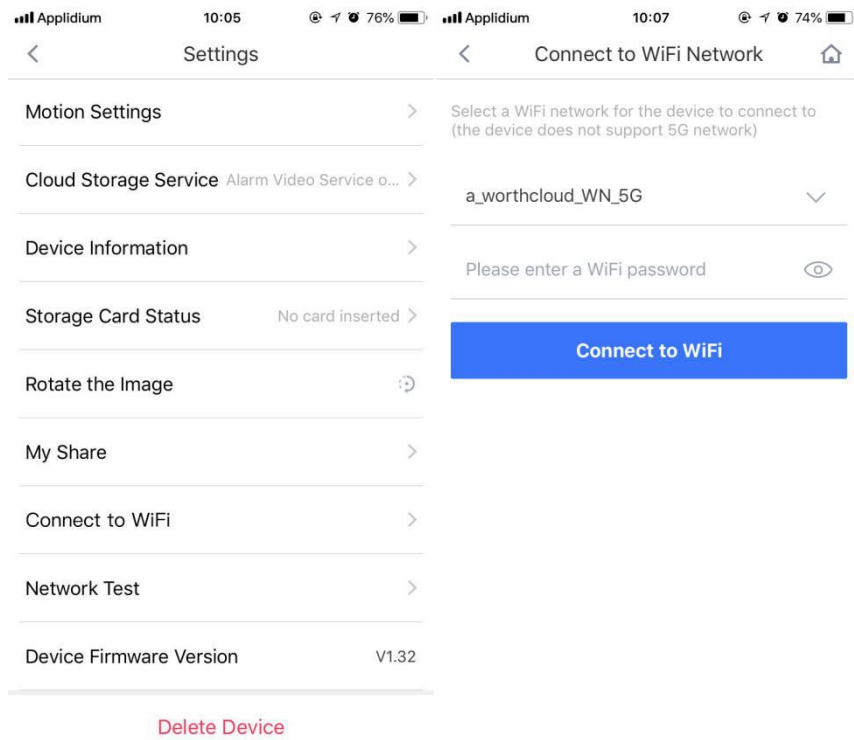


4. Switch to The WIFI Network

- 1) Click on the settings button on the top right corner in the live preview page, and then choose “Connect to WIFI” option.
- 2) Choose your WIFI network, enter the password and click on “Connect to WIFI” button.
- 3) After WIFI is connected, the Ethernet cable can be removed from the camera.

Note: The Ethernet cable connection is prior than the wireless. Camera is always on the wire connection

when both are available.



For further support, please visit <https://www.worthcloud.cn/> or check the online document in the Yoocam App.

FCC Statement

This equipment has been tested and found to comply with the limits for a Class B digital device, pursuant to part 15 of the FCC rules. These limits are designed to provide reasonable protection against harmful interference in a residential installation. This equipment generates, uses and can radiate radio frequency energy and, if not installed and used in accordance with the instructions, may cause harmful interference to radio communications. However, there is no guarantee that interference will not occur in a particular installation. If this equipment does cause harmful interference to radio or television reception, which can be determined by turning the equipment off and on, the user is encouraged to try to correct the interference by one or more of the following measures:

- Reorient or relocate the receiving antenna.
- Increase the separation between the equipment and receiver.
- Connect the equipment into an outlet on a circuit different from that to which the receiver is connected.
- Consult the dealer or an experienced radio/TV technician for help.

To assure continued compliance, any changes or modifications not expressly approved by the party.

Responsible for compliance could void the user's authority to operate this equipment. (Example- use only shielded interface cables when connecting to computer or peripheral devices).

This equipment complies with Part 15 of the FCC Rules. Operation is subject to the following two conditions:

- (1) This device may not cause harmful interference, and
- (2) This device must accept any interference received, including interference that may cause undesired operation.

FCC Radiation Exposure Statement:

The equipment complies with FCC Radiation exposure limits set forth for uncontrolled environment. This equipment should be installed and operated with minimum distance 20cm between the radiator and your body.