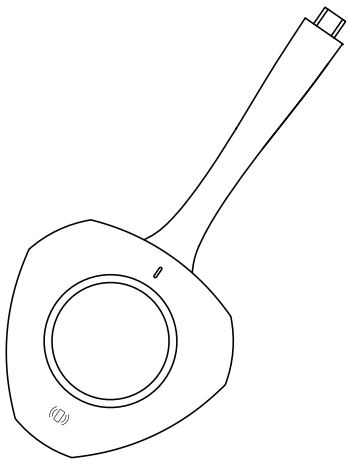


CLEVERTOUCH[®]

by Boxlight[®]



CleverCast User Manual

All pictures in this manual are for reference only,
please refer to the actual product

◆ Safety Warnings

Before using and operating this device, please read thoroughly and comply with the following precautions in order to prevent accidents or abnormal operation.

☆ Operating Environment

- 1) DO NOT expose the camera to any heat source (such as electrical heater).
- 2) Normal operating temperature is 0–40℃, normal operating humidity is 10%–90%RH.
- 3) DO NOT place the product in dusty and humid environments in case of internal circuit fault.
- 4) Do not expose the device to direct sunlight, so as to avoid the high temperature of the device and affect the normal use of the device.

☆ Children Safety

- 1) This equipment and accessories may contain some small parts, please keep them out of reach of children to avoid danger.

☆ Water Precaution

- 1) The product is not waterproof, Please keep it dry.

☆ Maintenance

- 1) Please contact professional service personnel for maintenance services.
- 2) When the equipment is damaged, please do not disassemble it for repair without permission, please call customer service to report for repair.
- 3) DO NOT insert any sharp or pointed object into the device.
- 4) DO NOT drop or hit the device to avoid damage to the device.

◆ Statement

- 1) Intellectual property right statement: The hardware design and software of this product are covered by the patents. Anyone who reproduces this product or the content of the instruction without the authorization of the Company shall assume legal liabilities.
- 2) This manual is for reference only, and the actual function of the final product is subject to the actual function of the product received by the customer.
- 3) The picture is for reference only, please refer to the actual product. The company reserves the right to improve and change the appearance and design of the product without notice.

◆ Basic Troubleshooting

When the systems cannot get connected, please troubleshoot as follows:

- ① Please check that the screenshare software runs properly on your computer.
- ② Please check that the Wireless Screenshare is correctly pair to the Interactive Intelligent Panel.
- ③ For the first time, if the computer which has been plugged into Wireless Screenshare fails to pop up the "software prompt", you can manually pair the screenshare software on this computer (No need to pair next time).
- ④ When the hotspot of the Interactive Intelligent Panel changes, the Wireless Screenshare needs to be repaired again.

◆ Indicators Status Descriptions

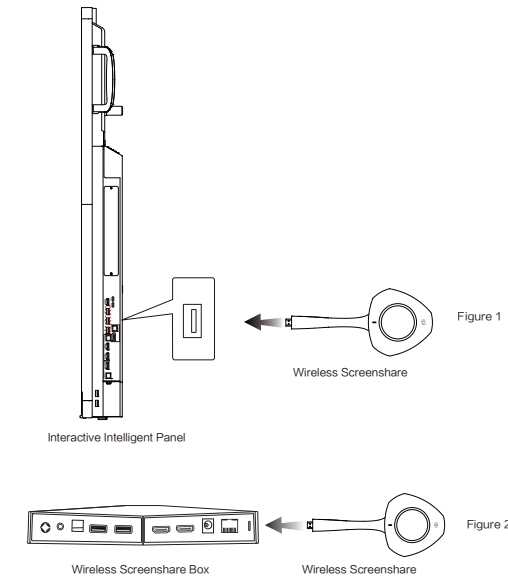
- ① Pick up the Wireless Screenshare: the white light is half on.
- ② Long press to pair: the blue light flashes; pairing is successful: the blue light is always on; pairing fails: the red light is always on.
- ③ Insert the Interactive Intelligent Panel pairing: the blue light flashes; pairing is successful: the blue light is always on; pairing fails: the red light is always on.
- ④ Insert the computer: the white light is flashing; successfully connected to the Interactive Intelligent Panel: the white light is always on.
- ⑤ Press the Wireless Screenshare, the Wireless Screenshare is being projected: green.
- ⑥ Unplug the Wireless Screenshare, before sleep: the white light is half on.
- ⑦ Sleep: Lights out.

◆ Function Introduction

- ① Support personal computer screen wireless transmission to Interactive Intelligent Panel / Wireless Screenshare Box;
 - ② Support simultaneous transmission of video and audio;
 - ③ Support up to 8 Wireless Screenshare connections at the same time, which can be realized by clicking the Wireless Screenshare button;
 - ④ Support PC screen transfer to Interactive Intelligent Panel/Wireless Screenshare Box in an extended form;
 - ⑤ Support touch return, you can manually touch and operate the personal computer on the Interactive Intelligent Panel;
 - ⑥ Support quick start and quick disconnection; quick start: when the battery is sufficient, the fastest time from connection to successful screen projection is 5s (quick start is not supported for the first use, and it can only be used after pairing with a Interactive Intelligent Panel).
- Quick disconnection: When the battery is sufficient, the fastest time from disconnecting the wireless screen sharing to the disappearance of the screen projection on the Interactive Intelligent Panel is 1s.

◆ Connection

For the first use, connect the Wireless Screenshare to the USB interface of the Interactive Intelligent Panel / Wireless Screenshare Box for pairing (Use again without pairing). There are 2 ways of pairing:
Step 1:
(1) The Wireless Screenshare is connected to the USB Type–C interface of the Interactive Intelligent Panel or the Wireless Screenshare Box through the USB Type–C interface to realize pairing, Figure 1 and Figure 2;



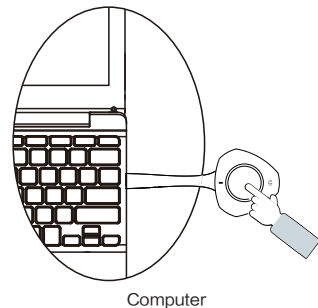
(2) Pairing via Bluetooth: The Wireless Screenshare does not connect to any host. After picking up the Wireless Screenshare, The Wireless Screenshare indicator light is slightly on, press and hold the Wireless Screenshare button for more than 5 seconds until the indicator flashes, within 2 meters of the Interactive Intelligent Panel, the Interactive Intelligent Panel will actively pop up a window to display whether it needs to be connected, and complete the pairing according to the pop–up prompt.
Note: Bluetooth pairing is only available on some models.

Step 2:

After the pairing is successful, connect the Wireless Screenshare to the DP interface of the personal computer.

Step 3:

Follow the instruction on the indicator light of the Wireless Screenshare, and then press the button of Wireless Screenshare to implement screen mirroring.



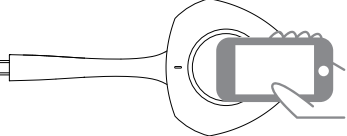
◆ NFC Function

Place the mobile phone in the NFC position of the Wireless Screenshare, and you can connect to the Interactive Intelligent Panel for screen sharing.

Note:

(1) When the mobile phone touches the NFC of the Wireless Screenshare, it will automatically connect to the hidden hotspot of the Interactive Intelligent Panel;

(2) When the Wireless Screenshare is paired with the Interactive Intelligent Panel, the pairing information will be rewritten.



Note: The picture below shows the location of the mobile phone NFC tag



◆ BYOM Function

- 1.Insert the dongle into the computer and wait for the indicator light to stay on.
- 2.Open any video conferencing software on your computer, join the meeting.
- 3.In the video conferencing software, switch the camera, microphone, and speaker to M–Media respectively.
- 4.Press the dongle button to initiate screen sharing and share the screen with local participants.

◆ Battery

The device contains a battery that is irreplaceable by an ordinary person. Please note that:

- disposal of a battery into fire or a hot oven, or mechanically crushing or cutting of a battery, that can result in an explosion;
- leaving a battery in an extremely high temperature surrounding environment that can result in an explosion or the leakage of flammable liquid or gas; and
- a battery subjected to extremely low air pressure that may result in an explosion or the leakage of flammable liquid or gas.

RF & Power

Frequency band(s)	Maximum power transmitted (E.i.r.p)
2400–2483.5MHz	3.72 dBm
5150–5250MHz	17.13 dBm
5250–5350MHz	17.29 dBm
5470–5725MHz	17.62 dBm
5725–5875MHz	12.14 dBm
13.56MHz	–29.5 dBuA/m

AT	BE	BG	CH	CY	CZ	DE	DK	EE			
EL	ES	FI	FR	HR	HU	IE	IS	IT			
LI	LT	LU	LV	MT	NL	NO	PL	PT			
RO	SE	SI	SK	UK(NI)							
		UK									

Restrictions on putting into service to Europe:

5150–5250 MHz: Indoor use.

5250–5350 MHz: Indoor use: inside buildings only.

This equipment should be installed and operated with a minimum distance of 20 centimeters between the radiator and your body.

WLAN channel availability varies by country/region.



This symbol, affixed to the product or its packaging, indicates that the product must not be processed with household waste. It must be brought to an electric and electronic waste collection point for recycling and disposal. By the appropriate disposal of this product you also help in preventing potentially negative consequences for the environment and human health. The recycling of materials helps preserve our natural resources. For further information regarding the recycling of this product, please contact your municipality, local waste disposal centre or the store where the product was purchased.

◆ Federal Communication Commission Interference Statement

This equipment has been tested and found to comply with the limits for a Class B digital device, pursuant to Part 15 of the FCC Rules. These limits are designed to provide reasonable protection against harmful interference in a residential installation. This equipment generates, uses, and can radiate radio frequency energy and, if not installed and used in accordance with the instructions, may cause harmful interference to radio communications. However, there is no guarantee that interference will not occur in a particular installation. If this equipment does cause harmful interference to radio or television reception, which can be determined by turning the equipment off and on, the user is encouraged to try to correct the interference by one or more of the following measures:

- Reorient or relocate the receiving antenna.
- Increase the separation between the equipment and receiver.
- Connect the equipment into an outlet on a circuit different from that to which the receiver is connected.
- Consult the dealer or an experienced radio/TV technician for help.

◆ FCC Caution:

This device complies with Part 15 of the FCC Rules. Operation is subject to the following two conditions:

(1) This device may not cause harmful interference, and

(2) this device must accept any interference received, including interference that may cause undesired operation. Caution: The user is cautioned that changes or modifications not expressly approved by the party responsible for compliance could void the user's authority to operate the equipment. This equipment complies with FCC radiation exposure limits set forth for an uncontrolled environment.

◆ Non–modification Statement:

Changes or modifications not expressly approved by the party responsible for compliance could void the user's authority to operate the equipment.

◆ IC Radiation Exposure Statement for Canada

This device contains licence–exempt transmitter(s)/receiver(s) that comply with Innovation, Science and Economic Development Canada's licence–exempt RSS(s). Operation is subject to the following two conditions:

1.This device may not cause interference.

2.This device must accept any interference, including interference that may cause undesired operation of the device.

L' é metteur/r é cepteur exempt de licence contenu dans le pr é sent appareil est conforme aux CNR d' Innovation, Sciences et D é veloppement é conomique Canada applicables aux appareils radio exempts de licence. L' exploitation est autoris é e aux deux conditions suivantes :

1.L' appareil ne doit pas produire de brouillage;

2.L' appareil doit accepter tout brouillage radio é lectrique subi, m ê me si le brouillage est susceptible d' en compromettre le fonctionnement.

The device for operation in the band 5150 ~ 5250 MHz is only for indoor use to reduce the potential for harmful interference to co–channel mobile satellite systems.

Les dispositifs fonctionnant dans la bande de 5 150 à 5 250 MHz sont r é serv é s uniquement pour une utilisation à l' int é rieur afin de r é duire les risques de brouillage pr é judiciable aux syst è mes de satellites mobiles utilisant les m ê mes canaux.

The SAR limit set by the FCC/IC is 1.6W/kg–1g. For close–to–body operation conditions, this device has been tested and meets the FCC/IC RF exposure guidelines, when used with an accessory, the accessory should not contain any metal element and positioned minimum of 5 mm from the body. RF exposure compliance with any accessory that contains metal was not tested and certified, and use of such accessory should be avoided.

La limite DAS fix é e par la FCC/IC est de 1,6 W/kg–1 g. Pour des conditions de fonctionnement proches du corps, cet appareil a é t é test é et r é pond aux directives d'exposition RF FCC/IC. Lorsqu'il est utilis é avec un accessoire, l'accessoire ne doit contenir aucun é l é ment m é tallique et doit ê tre positionn é à au moins 5 mm du corps. La conformit é de l'exposition aux RF avec tout accessoire contenant du m é tal n'a pas é t é test é e et certifi é e, et l'utilisation de tels accessoires doit ê tre é vit é e.