

FCC TEST REPORT

For

ABLETECH

wireless rear camera

Model No.: RCS-5000R

Prepared For : ABLETECH
Address : #818, C-dong, 7, Beobwon-ro 11-gil, Songpa-gu, Seoul, Republic of Korea

Prepared By : Shenzhen Anbotek Compliance Laboratory Limited
Address : 1/F, Building D, Sogood Science and Technology Park, Sanwei
community, Hangcheng Street, Bao'an District, Shenzhen, Guangdong,
China.518102
Tel: (86) 755-26066440 Fax: (86) 755-26014772

Report Number : SZAWW180212001-01
Date of Test : Feb. 12~Apr. 03, 2018
Date of Report : Apr. 03, 2018

Contents

1. General Information.....	4
1.1. Client Information.....	4
1.2. Description of Device (EUT).....	4
1.3. Auxiliary Equipment Used During Test.....	4
1.4. Description of Test Modes.....	5
1.5. List of Channels.....	5
1.6. Description of Test Setup.....	6
1.7. Test Equipment List.....	7
1.8. Measurement Uncertainty.....	8
1.9. Description of Test Facility.....	8
2. Summary of Test Results.....	9
3. Conducted Emission Test.....	10
3.1. Test Standard and Limit.....	10
3.2. Test Setup.....	10
3.3. Test Procedure.....	10
3.4. Test Data.....	10
4. Radiated Emission and Band Edge.....	15
4.1. Test Standard and Limit.....	15
4.2. Test Setup.....	15
4.3. Test Procedure.....	17
4.4. Test Data.....	17
5. 20dB Bandwidth Test.....	27
5.1. Test Standard and Limit.....	27
5.2. Test Setup.....	27
5.3. Test Procedure.....	27
5.4. Test Data.....	27
6. Antenna Requirement.....	30
6.1. Test Standard and Requirement.....	30
6.2. Antenna Connected Construction.....	30
APPENDIX I -- TEST SETUP PHOTOGRAPH.....	31
APPENDIX II -- EXTERNAL PHOTOGRAPH.....	33
APPENDIX III -- INTERNAL PHOTOGRAPH.....	40

TEST REPORT

Applicant : ABLETECH
Manufacturer : ABLETECH
Product Name : wireless rear camera
Model No. : RCS-5000R
Trade Mark : N/A
Rating(s) : Input: DC 12V/24V, 150mA max

Test Standard(s) : FCC Part15 Subpart C, Paragraph 15.249

Test Method(s) : ANSI C63.10: 2013

The device described above is tested by Shenzhen Anbotek Compliance Laboratory Limited to determine the maximum emission levels emanating from the device and the severe levels of the device can endure and its performance criterion. The measurement results are contained in this test report and Shenzhen Anbotek Compliance Laboratory Limited is assumed full of responsibility for the accuracy and completeness of these measurements. Also, this report shows that the EUT (Equipment Under Test) is technically compliant with the FCC Part 15 Subpart C requirements.

This report applies to above tested sample only and shall not be reproduced in part without written approval of Shenzhen Anbotek Compliance Laboratory Limited.

Date of Test : Feb. 12~Apr. 03, 2018

Prepared by :



Winkey Wang

(Tested Engineer / Winkey Wang)

Reviewer :

Tangcy. T.

(Project Manager / Tangcy. T)

Approved & Authorized Signer :

Tom Chen

(Manager / Tom Chen)

1. General Information

1.1. Client Information

Applicant	:	ABLETECH
Address	:	#818, C-dong, 7, Beobwon-ro 11-gil, Songpa-gu, Seoul, Republic of Korea
Manufacturer	:	ABLETECH
Address	:	#818, C-dong, 7, Beobwon-ro 11-gil, Songpa-gu, Seoul, Republic of Korea

1.2. Description of Device (EUT)

Product Name	:	wireless rear camera	
Model No.	:	RCS-5000R	
Trade Mark	:	N/A	
Test Power Supply	:	DC 12V	
Product Description	:	Operation Frequency:	2414-2468MHz
	:	Number of Channel:	4 Channels
	:	Modulation Type:	GFSK
	:	Antenna Type:	Columnar Antenna
	:	Antenna Gain(Peak):	0 dBi
Remark: 1)For a more detailed features description, please refer to the manufacturer’s specifications or the User’s Manual.			

1.3. Auxiliary Equipment Used During Test

N/A	:	N/A
-----	---	-----

1.4. Description of Test Modes

To investigate the maximum EMI emission characteristics generates from EUT, the test system was pre-scanning tested base on the consideration of following EUT operation mode or test configuration mode which possible have effect on EMI emission level. Each of these EUT operation mode(s) or test configuration mode(s) mentioned above was evaluated respectively.

Pretest Mode	Description
Mode 1	Keeping TX+Charging mode
Mode 2	CH01
Mode 3	CH03
Mode 4	CH04

For Radiated Emission	
Final Test Mode	Description
Mode 1	Keeping TX+Charging mode
Mode 2	CH01
Mode 3	CH03
Mode 4	CH04

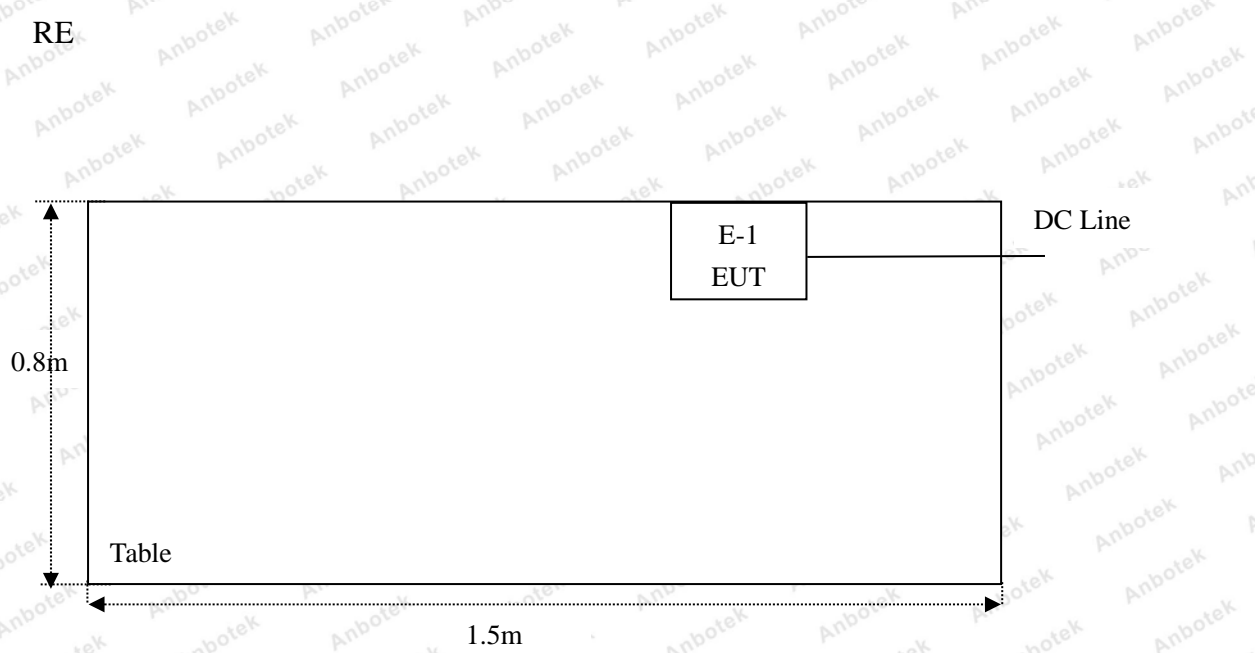
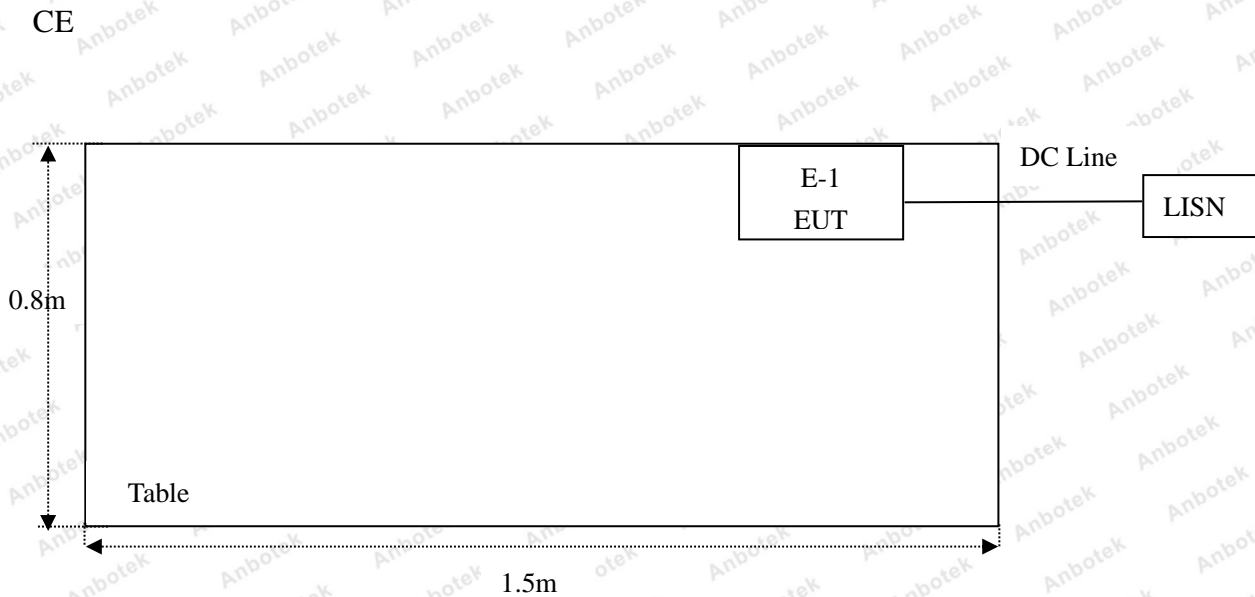
Note:

1. The engineering test program was provided and the EUT was programmed to be in continuously transmitting mode.
2. EUT built-in battery-powered, fully-charged battery use of the test battery.

1.5. List of Channels

Channel	Freq. (MHz)	Channel	Freq. (MHz)	Channel	Freq. (MHz)	Channel	Freq. (MHz)
1	2414	2	2432	3	2450	4	2468

1.6. Description of Test Setup



1.7. Test Equipment List

Item	Equipment	Manufacturer	Model No.	Serial No.	Last Cal.	Cal. Interval
1.	L.I.S.N. Artificial Mains Network	Rohde & Schwarz	ENV216	100055	Nov. 17, 2017	1 Year
2.	EMI Test Receiver	Rohde & Schwarz	ESCI	100627	Nov. 17, 2017	1 Year
3.	RF Switching Unit	Compliance Direction	RSU-M2	38303	Nov. 17, 2017	1 Year
4.	Spectrum Analysis	Agilent	E4407B	US39390582	Nov. 17, 2017	1 Year
5.	Spectrum Analysis	Agilent	N9038A	MY53227295	Nov. 17, 2017	1 Year
6.	Preamplifier	SKET Electronic	BK1G18G30 D	KD17503	Nov. 17, 2017	1 Year
7.	EMI Test Receiver	Rohde & Schwarz	ESPI	101604	Nov. 17, 2017	1 Year
8.	Double Ridged Horn Antenna	Instruments corporation	GTH-0118	351600	Nov. 20, 2017	1 Year
9.	Bilog Broadband Antenna	Schwarzbeck	VULB9163	VULB 9163-289	Nov. 20, 2017	1 Year
10.	Loop Antenna	Schwarzbeck	HFH2-Z2	100047	Nov. 17, 2017	1 Year
11.	Horn Antenna	Schwarzbeck	BBHA9170	9170-375	Nov. 17, 2017	1 Year
12.	Pre-amplifier	SONOMA	310N	186860	Nov. 17, 2017	1 Year
13.	EMI Test Software EZ-EMC	SHURPLE	N/A	N/A	N/A	N/A
14.	RF Test Control System	YIHENG	YH3000	2017430	Nov. 18, 2017	1 Year
15.	Power Sensor	DAER	RPR3006W	15I00041SN045	Nov. 17, 2017	1 Year
16.	Power Sensor	DAER	RPR3006W	15I00041SN046	Nov. 17, 2017	1 Year
17.	MXA Spectrum Analysis	Agilent	N9020A	MY51170037	Nov. 18, 2017	1 Year
18.	MXG RF Vector Signal Generator	Agilent	N5182A	MY48180656	Nov. 18, 2017	1 Year
19.	Signal Generator	Agilent	E4421B	MY41000743	Nov. 18, 2017	1 Year
20.	DC Power Supply	LW	TPR-6410D	349315	Nov. 01, 2017	1 Year
21.	Constant Temperature Humidity Chamber	Sertep	ZJ-HWHS80 B	ZJ-17042804	Nov. 01, 2017	1 Year

1.8. Measurement Uncertainty

Radiation Uncertainty	:	Ur = 4.1 dB (Horizontal)
		Ur = 4.3 dB (Vertical)
Conduction Uncertainty	:	Uc = 3.4dB

1.9. Description of Test Facility

The test facility is recognized, certified, or accredited by the following organizations:

FCC-Registration No.: 184111

Shenzhen Anbotek Compliance Laboratory Limited, EMC Laboratory has been registered and fully described in a report filed with the (FCC) Federal Communications Commission. The acceptance letter from the FCC is maintained in our files. Registration No. 184111, July 31, 2017.

ISED-Registration No.: 8058A-1

Shenzhen Anbotek Compliance Laboratory Limited, EMC Laboratory has been registered and fully described in a report filed with the (ISED) Innovation, Science and Economic Development Canada. The acceptance letter from the ISED is maintained in our files. Registration 8058A-1, June 13, 2016.

Test Location

All Emissions tests were performed at
 Shenzhen Anbotek Compliance Laboratory Limited.
 at 1/F, Building D, Sogood Science and Technology Park, Sanwei community, Hangcheng Street, Bao'an District,
 Shenzhen, Guangdong, China.518102

2. Summary of Test Results

Standard Section	Test Item	Result
15.203	Antenna Requirement	PASS
15.207	Conducted Emission	PASS
15.249	Radiated Emission	PASS
15.215(c)	20dB Bandwidth	PASS
15.249(c)	Band Edge	PASS
Remark: "N/A" is an abbreviation for Not Applicable.		

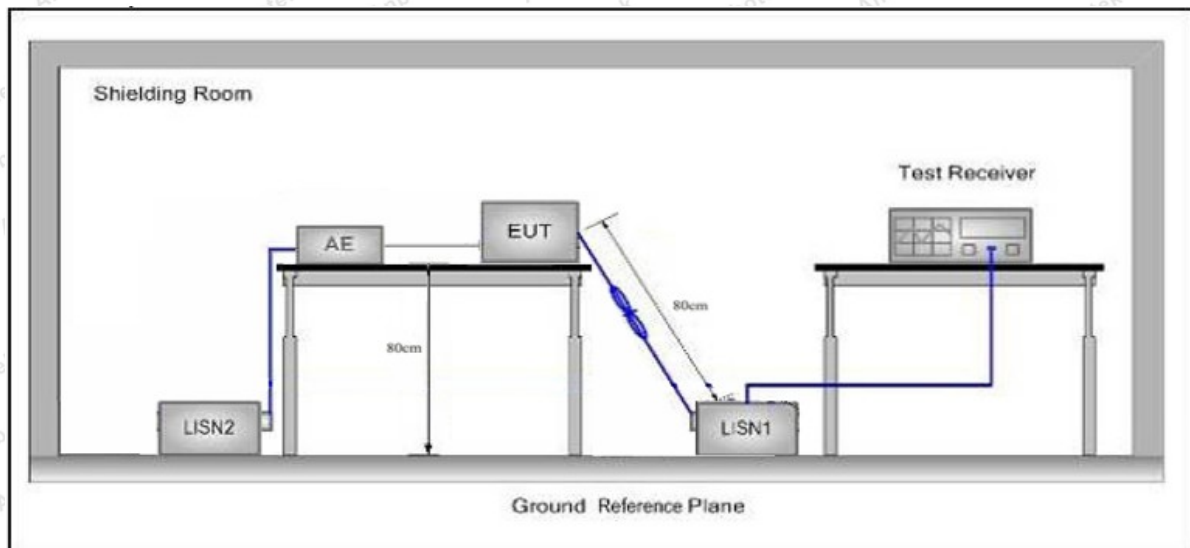
3. Conducted Emission Test

3.1. Test Standard and Limit

Test Standard	FCC Part15 Section 15.207		
Test Limit	Frequency	Maximum RF Line Voltage (dBuV)	
		Quasi-peak Level	Average Level
	150kHz~500kHz	66 ~ 56 *	56 ~ 46 *
	500kHz~5MHz	56	46
5MHz~30MHz	60	50	

Remark: (1) *Decreasing linearly with logarithm of the frequency.
(2) The lower limit shall apply at the transition frequency.

3.2. Test Setup



3.3. Test Procedure

The EUT system is connected to the power mains through a line impedance stabilization network (L.I.S.N.). This provides a 50ohm coupling impedance for the EUT system. Please refer the block diagram of the test setup and photographs. Both sides of AC line are checked to find out the maximum conducted emission. In order to find the maximum emission levels, the relative positions of equipment and all of the interface cables shall be changed according to FCC ANSI C63.10-2013 on Conducted Emission Measurement.

The bandwidth of test receiver (ESCI) set at 9kHz.

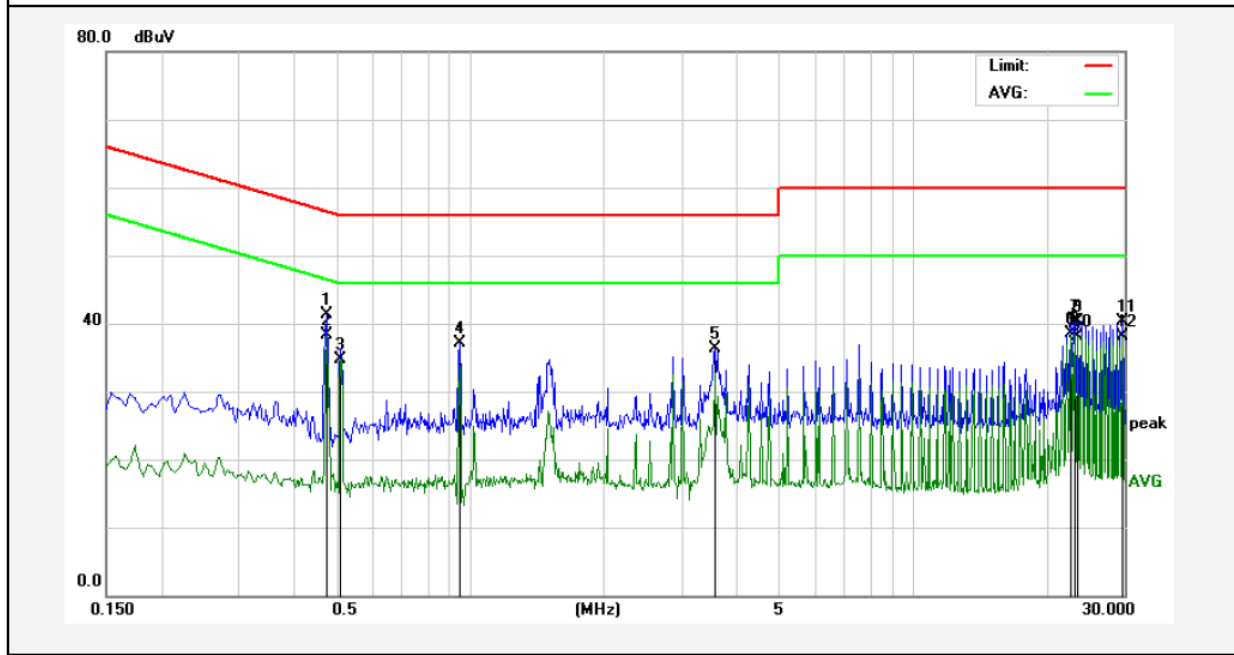
The frequency range from 150kHz to 30MHz is checked.

3.4. Test Data

Please to see the following pages

Conducted Emission Test Data

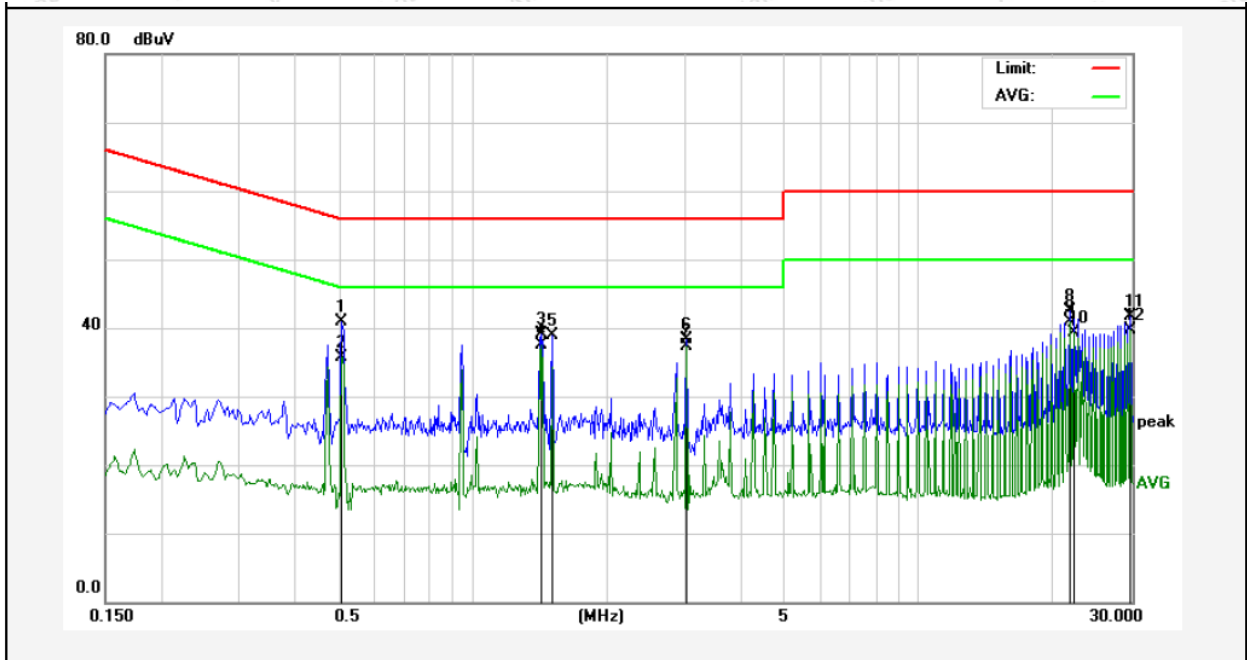
Test Site: 1# Shielded Room
 Operating Condition: Keeping TX+ Charging Mode
 Test Specification: DC 12V
 Comment: Live Line
 Tem.:21.7°C Hum.:60%



No.	Freq. (MHz)	Reading (dBuV)	Factor (dB)	Result (dBuV)	Limit dBuV	Over Limit (dB)	Detector	Remark
1	0.4738	21.42	19.97	41.39	56.45	-15.06	QP	
2	0.4738	18.27	19.97	38.24	46.45	-8.21	AVG	
3	0.5100	14.79	19.98	34.77	46.00	-11.23	AVG	
4	0.9458	17.02	20.11	37.13	56.00	-18.87	QP	
5	3.5779	16.18	20.17	36.35	56.00	-19.65	QP	
6	22.6700	18.23	20.31	38.54	50.00	-11.46	AVG	
7	23.1418	20.06	20.30	40.36	60.00	-19.64	QP	
8	23.1418	18.11	20.30	38.41	50.00	-11.59	AVG	
9	23.6140	20.06	20.30	40.36	60.00	-19.64	QP	
10	23.6140	17.86	20.30	38.16	50.00	-11.84	AVG	
11	29.7540	20.03	20.27	40.30	60.00	-19.70	QP	
12	29.7540	17.91	20.27	38.18	50.00	-11.82	AVG	

Conducted Emission Test Data

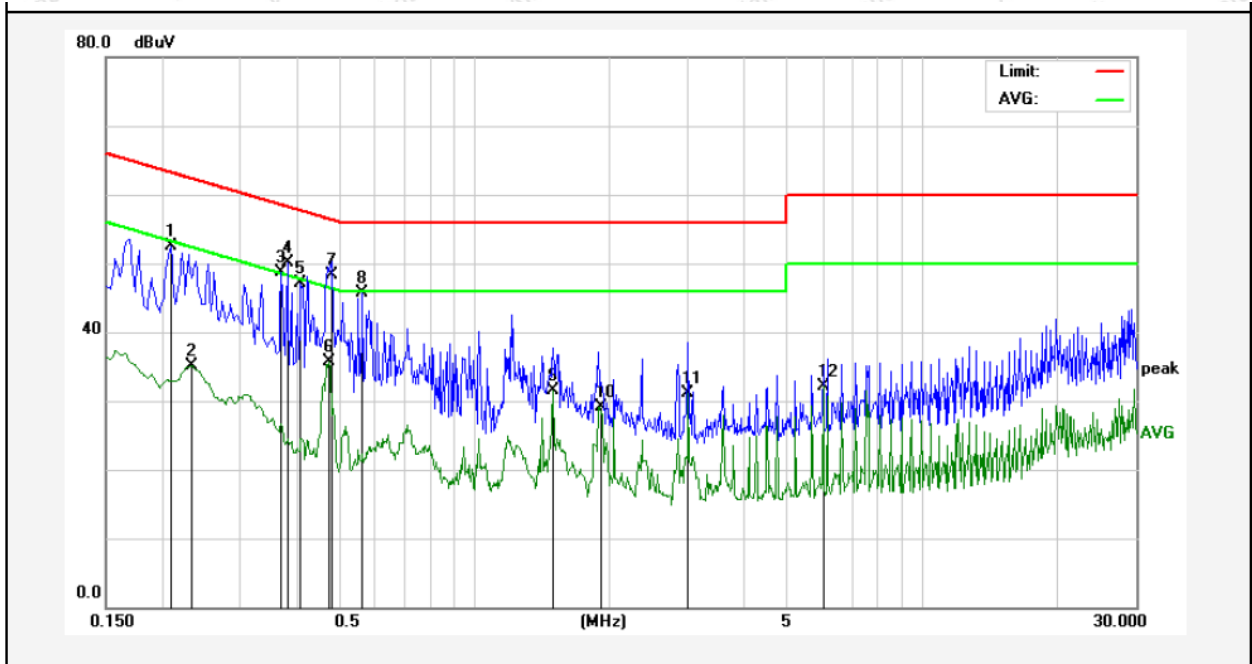
Test Site: 1# Shielded Room
 Operating Condition: Keeping TX+ Charging Mode
 Test Specification: DC 12V
 Comment: Neutral Line
 Tem.:21.7°C Hum.:60%



No.	Freq. (MHz)	Reading (dBuV)	Factor (dB)	Result (dBuV)	Limit dBuV	Over Limit (dB)	Detector	Remark
1	0.5100	20.90	19.98	40.88	56.00	-15.12	QP	
2	0.5100	15.69	19.98	35.67	46.00	-10.33	AVG	
3	1.4299	18.90	20.13	39.03	56.00	-16.97	QP	
4	1.4299	17.37	20.13	37.50	46.00	-8.50	AVG	
5	1.5060	18.87	20.13	39.00	56.00	-17.00	QP	
6	3.0139	18.18	20.16	38.34	56.00	-17.66	QP	
7	3.0139	17.11	20.16	37.27	46.00	-8.73	AVG	
8	21.7259	22.10	20.32	42.42	60.00	-17.58	QP	
9	21.7259	20.64	20.32	40.96	50.00	-9.04	AVG	
10	22.1980	19.08	20.31	39.39	50.00	-10.61	AVG	
11	29.7540	21.50	20.27	41.77	60.00	-18.23	QP	
12	29.7540	19.41	20.27	39.68	50.00	-10.32	AVG	

Conducted Emission Test Data

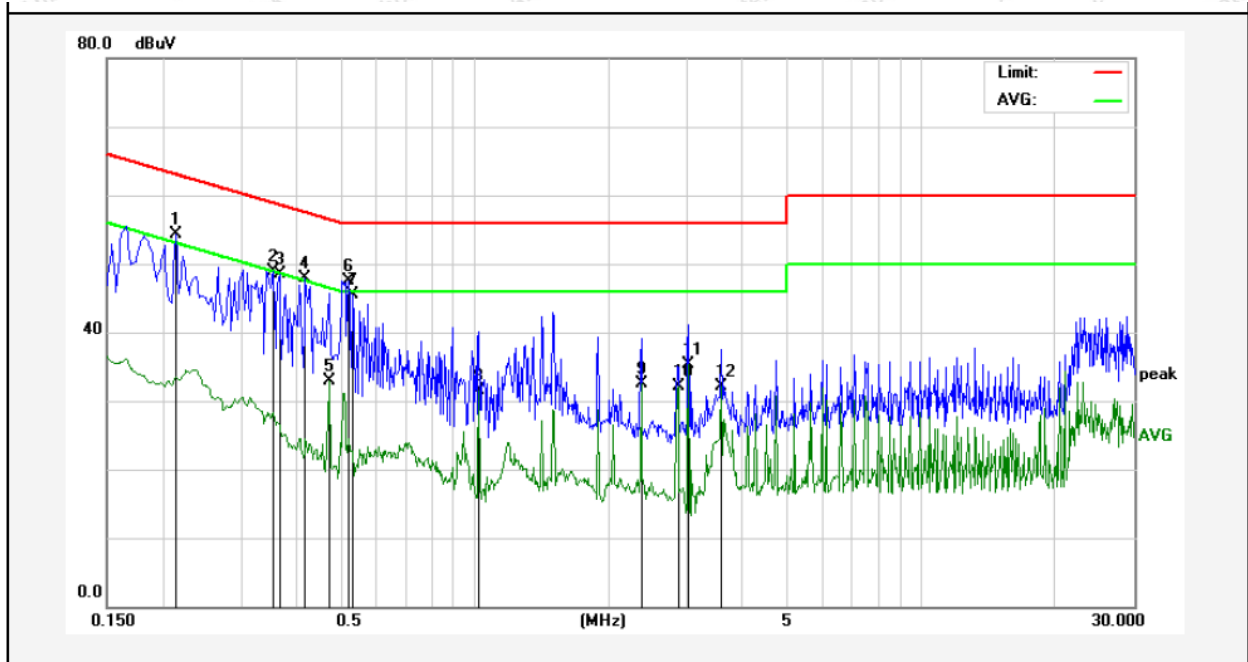
Test Site: 1# Shielded Room
 Operating Condition: Keeping TX+ Charging Mode
 Test Specification: DC 24V
 Comment: Live Line
 Tem.:21.7°C Hum.:60%



No.	Freq. (MHz)	Reading (dBuV)	Factor (dB)	Result (dBuV)	Limit dBuV	Over Limit (dB)	Detector	Remark
1	0.2099	32.61	19.90	52.51	63.21	-10.70	QP	
2	0.2340	15.25	19.89	35.14	52.30	-17.16	AVG	
3	0.3699	28.85	19.92	48.77	58.50	-9.73	QP	
4	0.3820	30.16	19.93	50.09	58.23	-8.14	QP	
5	0.4099	27.11	19.94	47.05	57.65	-10.60	QP	
6	0.4711	15.80	19.97	35.77	46.49	-10.72	AVG	
7	0.4786	28.35	19.97	48.32	56.36	-8.04	QP	
8	0.5620	25.79	20.00	45.79	56.00	-10.21	QP	
9	1.5020	11.31	20.13	31.44	46.00	-14.56	AVG	
10	1.8979	9.06	20.14	29.20	46.00	-16.80	AVG	
11	2.9980	10.95	20.16	31.11	46.00	-14.89	AVG	
12	6.0019	11.90	20.23	32.13	50.00	-17.87	AVG	

Conducted Emission Test Data

Test Site: 1# Shielded Room
 Operating Condition: Keeping TX+ Charging Mode
 Test Specification: DC 24V
 Comment: Neutral Line
 Tem.:21.7°C Hum.:60%



No.	Freq. (MHz)	Reading (dBuV)	Factor (dB)	Result (dBuV)	Limit dBuV	Over Limit (dB)	Detector	Remark
1	0.2139	34.31	19.90	54.21	63.05	-8.84	QP	
2	0.3539	29.01	19.91	48.92	58.87	-9.95	QP	
3	0.3659	28.52	19.92	48.44	58.59	-10.15	QP	
4	0.4179	27.96	19.94	47.90	57.49	-9.59	QP	
5	0.4739	12.85	19.97	32.82	46.45	-13.63	AVG	
6	0.5220	27.59	19.99	47.58	56.00	-8.42	QP	
7	0.5340	25.56	19.99	45.55	56.00	-10.45	QP	
8	1.0220	11.42	20.12	31.54	46.00	-14.46	AVG	
9	2.3620	12.43	20.15	32.58	46.00	-13.42	AVG	
10	2.8580	11.88	20.16	32.04	46.00	-13.96	AVG	
11	3.0099	15.07	20.16	35.23	46.00	-10.77	AVG	
12	3.5779	11.99	20.17	32.16	46.00	-13.84	AVG	

4. Radiated Emission and Band Edge

4.1. Test Standard and Limit

Test Standard	FCC Part15 C Section 15.209 and 15.205				
Test Limit	Frequency (MHz)	Field strength (microvolt/meter)	Limit (dBuV/m)	Remark	Measurement distance (m)
	0.009MHz~0.490MHz	2400/F(kHz)	-	-	300
	0.490MHz-1.705MHz	24000/F(kHz)	-	-	30
	1.705MHz-30MHz	30	-	-	30
	30MHz~88MHz	100	40.0	Quasi-peak	3
	88MHz~216MHz	150	43.5	Quasi-peak	3
	216MHz~960MHz	200	46.0	Quasi-peak	3
	960MHz~1000MHz	500	54.0	Quasi-peak	3
			54.0	Average	3
	Above 1000MHz	-	74.0	Peak	3

Remark:

- (1)The lower limit shall apply at the transition frequency.
- (2) 15.35(b), Unless otherwise specified, the limit on peak radio frequency emissions is 20dB above the maximum permitted average emission limit applicable to the equipment under test. This peak limit applies to the total peak emission level radiated by the device.

Test Standard	FCC Part15 C Section 15.249					
Test Limit	Frequency (MHz)	Field Strength of fundamental ((millivolts /meter)	Field Strength of Harmonics (microvolts/meter)	Limit (dBuV/m)	Remark	Measurement distance (m)
	2400~2483.5	50	-	114.0	Peak	3
	2400~2483.5	50	-	94.0	Average	3
	2400~2483.5	-	500	74.0	Peak	3
	2400~2483.5	-	500	54.0	Average	3

Remark:

- (1) 15.35(b), Unless otherwise specified, the limit on peak radio frequency emissions is 20dB above the maximum permitted average emission limit applicable to the equipment under test. This peak limit applies to the total peak emission level radiated by the device.

4.2. Test Setup

Figure 1. Below 30MHz

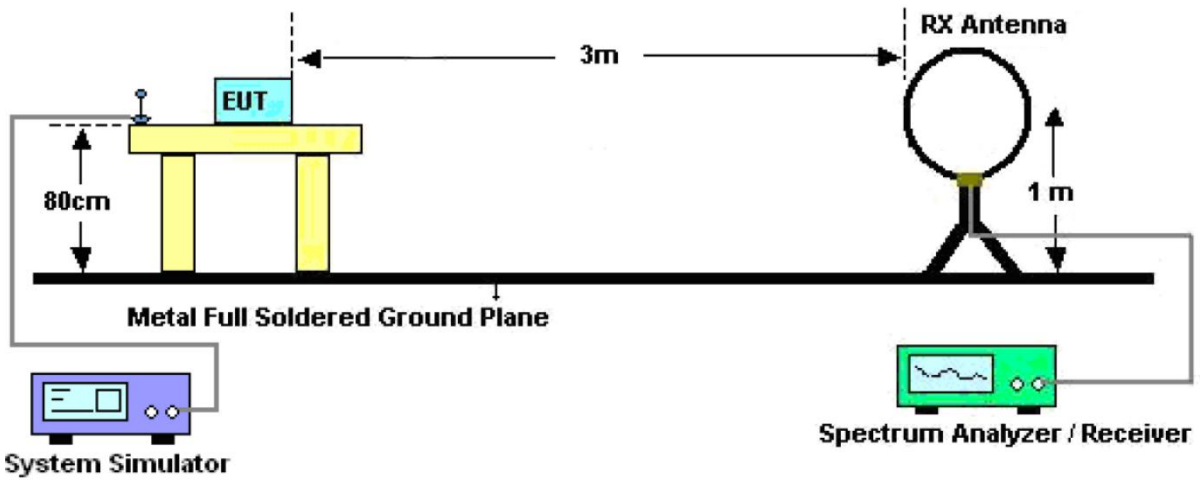


Figure 2. 30MHz to 1GHz

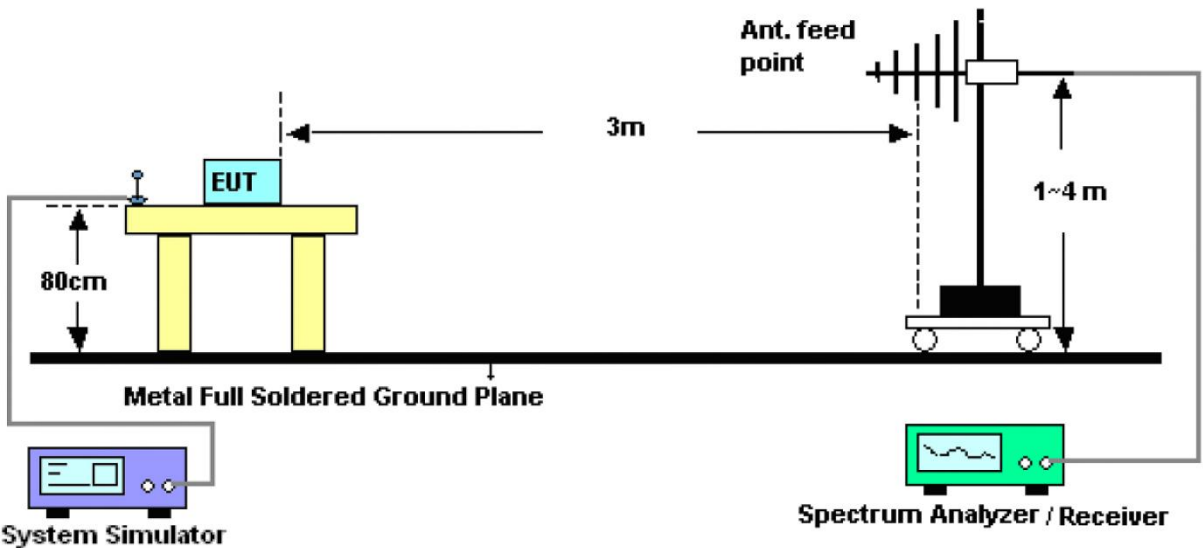
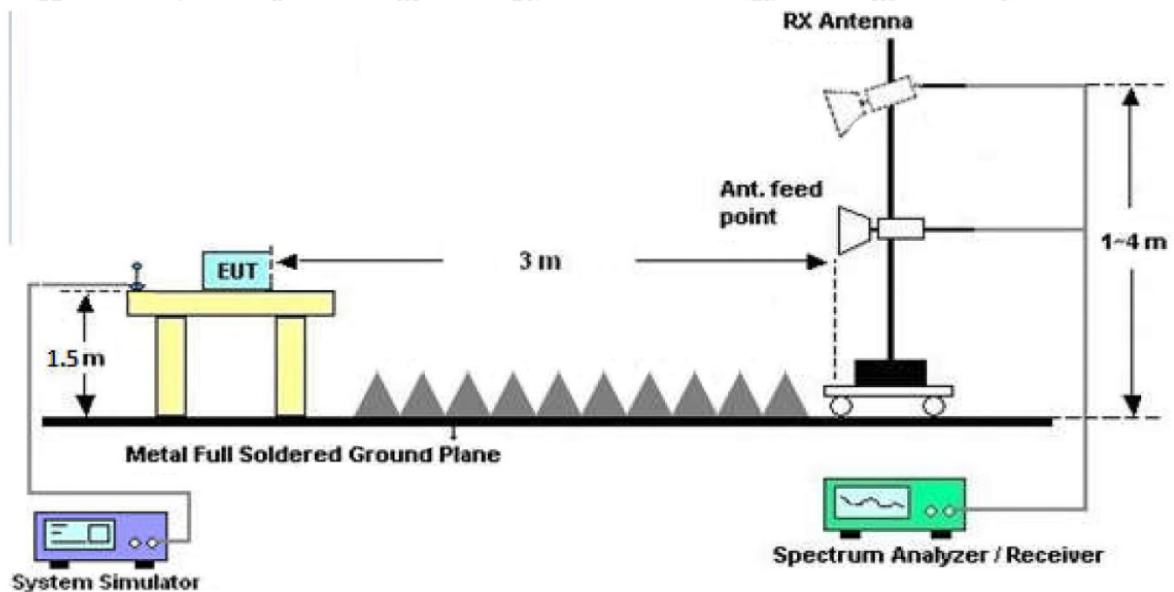


Figure 3. Above 1 GHz



4.3. Test Procedure

For below 1GHz: The EUT is placed on a turntable, which is 0.8m above the ground plane.

For above 1GHz: The EUT is placed on a turntable, which is 1.5m above the ground plane.

The turn table can rotate 360 degrees to determine the position of the maximum emission level. The EUT is set 3 meters away from the receiving antenna which is mounted on a antenna tower. The antenna can be moved up and down from 1 to 4 meters to find out the maximum emission level. Rotated the EUT through three orthogonal axes to determine the maximum emissions, both horizontal and vertical polarization of the antenna are set on test. The EUT is tested in 9*6*6 Chamber. The device is evaluated in xyz orientation.

For the radiated emission test above 1GHz:

Place the measurement antenna away from each area of the EUT determined to be a source of emissions at the specified measurement distance, while keeping the measurement antenna aimed at the source of emissions at each frequency of significant emissions, with polarization oriented for maximum response. The measurement antenna may have to be higher or lower than the EUT, depending on the radiation pattern of the emission and staying aimed at the emission source for receiving the maximum signal. The final measurement antenna elevation shall be that which maximizes the emissions. The measurement antenna elevation for maximum emissions shall be restricted to a range of heights of from 1 m to 4 m above the ground or reference ground plane.

For 9kHz to 150kHz, Set the spectrum analyzer as:

RBW = 200Hz, VBW = 1kHz, Detector = Quasi-Peak, Trace mode = Max hold, Sweep = auto couple.

For 150kHz to 30MHz, Set the spectrum analyzer as:

RBW = 9kHz, VBW = 30kHz, Detector = Quasi-Peak, Trace mode = Max hold, Sweep = auto couple.

For 30MHz to 1000MHz, Set the spectrum analyzer as:

RBW = 100kHz, VBW = 300kHz, Detector = Quasi-Peak, Trace mode = Max hold, Sweep = auto couple.

For above 1GHz, Set the spectrum analyzer as:

RBW = 1MHz, VBW = 1MHz, Detector = Peak, Trace mode = Max hold, Sweep = auto couple.

RBW = 1MHz, VBW = 10Hz, Detector = Average, Trace mode = Max hold, Sweep = auto couple.

4.4. Test Data

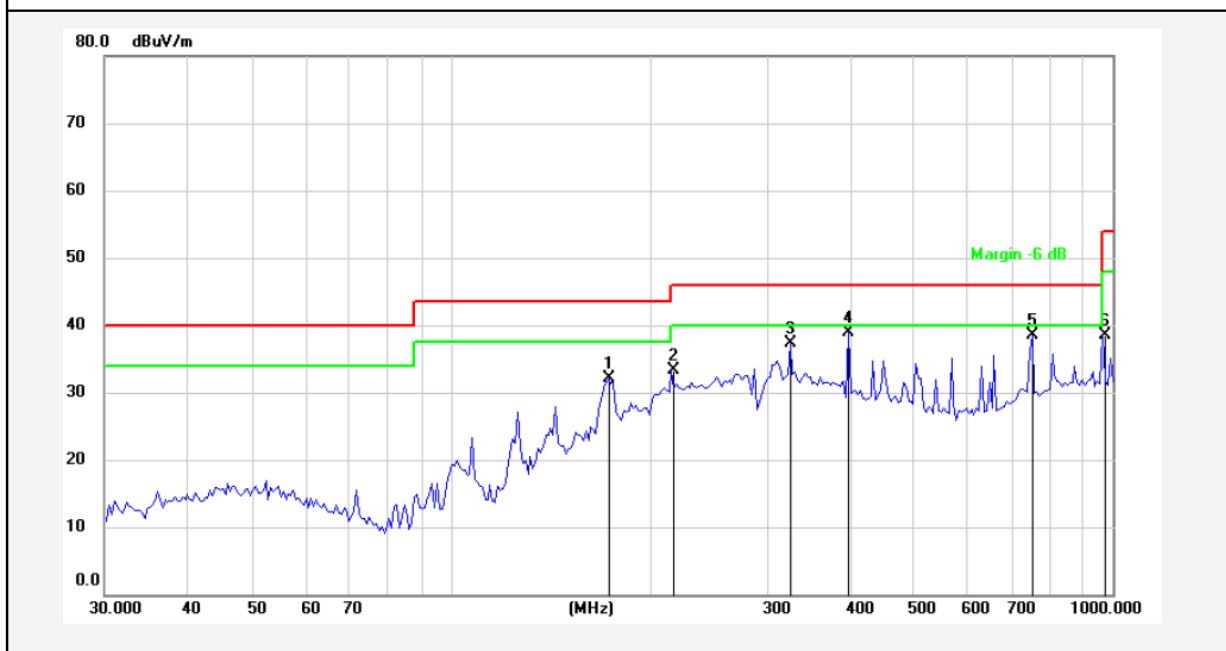
PASS

During the test, Pre-scan all kind of the place mode (X-axis, Y-axis, Z-axis), and found the X-axis is the worst case.

The test results of 9kHz-30MHz was attenuated more than 20dB below the permissible limits, so the results don't record in the report.

Test Results (30~1000MHz)

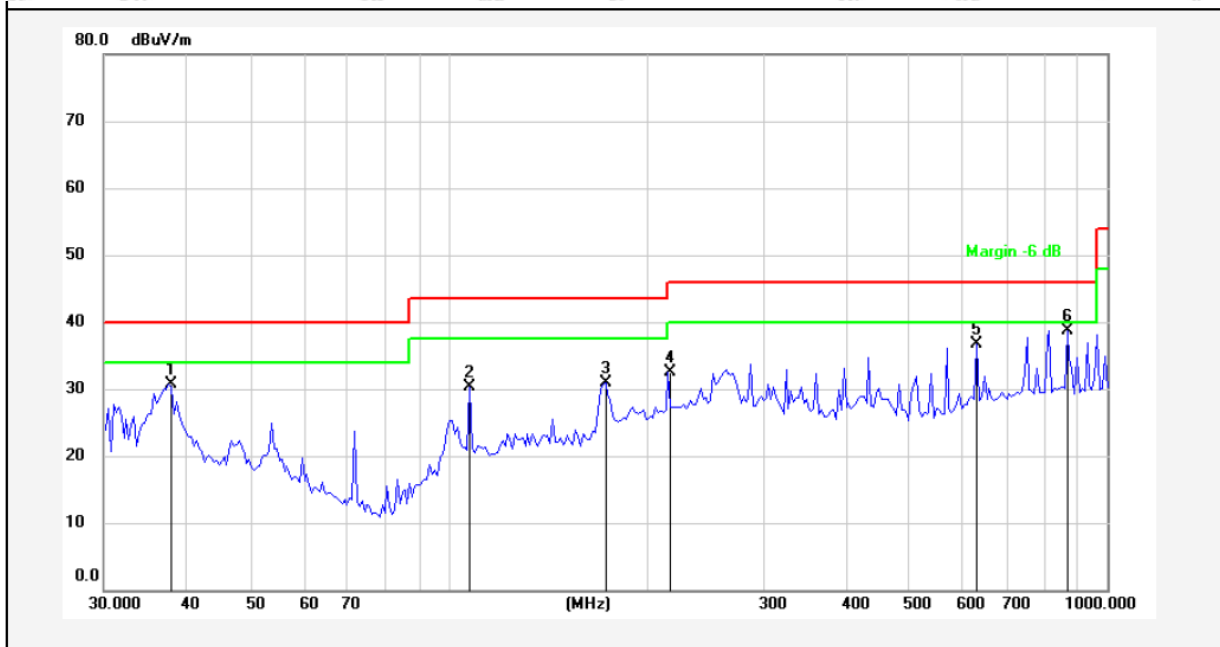
Job No.: SZAWW180212001-01 Temp.(°C)/Hum.(%RH): 23.2°C/53.4%RH
 Standard: FCC PART 15C Power Source: DC 12V
 Test Mode: Mode 1 Polarization: Horizontal



No.	Freq. (MHz)	Reading (dBuV/m)	Factor ()	Result (dBuV/m)	Limit (dBuV/)	Over Limit (dB)	Detector	Height (cm)	degree (deg)	Remark
1	173.2050	50.51	-18.48	32.03	43.50	-11.47	QP	300	32	
2	215.6456	48.92	-15.70	33.22	43.50	-10.28	QP	300	75	
3	325.5957	50.32	-13.04	37.28	46.00	-8.72	QP	300	112	
4	398.3312	50.33	-11.41	38.92	46.00	-7.08	QP	300	176	
5	755.3872	44.01	-5.51	38.50	46.00	-7.50	QP	300	242	
6	965.5421	41.25	-2.74	38.51	54.00	-15.49	QP	300	360	

Test Results (30~1000MHz)

Job No.: SZAWW180212001-01 Temp.(°C)/Hum.(%RH): 23.2°C/53.4%RH
 Standard: FCC PART 15C Power Source: DC 12V
 Test Mode: Mode 1 Polarization: Vertical



No.	Freq. (MHz)	Reading (dBuV/m)	Factor ()	Result (dBuV/m)	Limit (dBuV/)	Over Limit (dB)	Detector	Height (cm)	degree (deg)	Remark
1	37.6798	47.36	-16.60	30.76	40.00	-9.24	QP	300	21	
2	107.8876	47.69	-17.32	30.37	43.50	-13.13	QP	300	75	
3	173.2050	49.45	-18.48	30.97	43.50	-12.53	QP	300	124	
4	215.6456	48.26	-15.70	32.56	43.50	-10.94	QP	300	197	
5	633.9072	43.83	-7.05	36.78	46.00	-9.22	QP	300	254	
6	869.1301	42.43	-3.80	38.63	46.00	-7.37	QP	300	360	

Test Results (1GHz-25GHz)

Test Mode: CH01 (Low channel)									
Frequency (MHz)	Read Level (dBuV)	Antenna Factor (dB/m)	Cable Loss (dB)	Preamplifier Factor (dB)	Level (dBuV/m)	Limit (dBuV/m)	Over Limit (dB)	Pol.	Detector
2414.0000	93.41	31.12	2.18	35.33	91.38	114.00	-22.62	V	Peak
2414.0000	84.51	31.12	2.18	35.33	82.48	94.00	-11.52	V	AVG
4828.0000	47.63	34.01	2.58	34.65	49.57	74.00	-24.43	V	Peak
4828.0000	41.82	34.01	2.58	34.65	43.76	54.00	-10.24	V	AVG
7242.0000	43.48	36.16	2.97	35.07	47.54	74.00	-26.46	V	Peak
7242.0000	34.96	36.16	2.97	35.07	39.02	54.00	-14.98	V	AVG
9656.0000	*								
12070.0000	*								
14484.0000	*								
16898.0000	*								
2414.0000	90.35	31.12	2.18	35.33	88.32	114.00	-25.68	H	Peak
2414.0000	82.27	31.12	2.18	35.33	80.24	94.00	-13.76	H	AVG
4828.0000	44.59	34.01	2.58	34.65	46.53	74.00	-27.47	H	Peak
4828.0000	37.77	34.01	2.58	34.65	39.71	54.00	-14.29	H	AVG
7242.0000	40.06	36.16	2.97	35.07	44.12	74.00	-29.88	H	Peak
7242.0000	33.51	36.16	2.97	35.07	37.57	54.00	-16.43	H	AVG
9656.0000	*								
12070.0000	*								
14484.0000	*								
16898.0000	*								

Note:

1. Level = Receiver Read level + Antenna Factor + Cable Loss – Preamplifier Factor
2. “*” means the test results were attenuated more than 20dB below the permissible limits, so the results don't record in the report.

Test Mode: CH03 (Middle channel)									
Frequency (MHz)	Read Level (dBuV)	Antenna Factor (dB/m)	Cable Loss (dB)	Preamp Factor (dB)	Level (dBuV/m)	Limit (dBuV/m)	Over Limit (dB)	Pol.	Detector
2450.0000	92.41	31.12	2.20	34.51	91.22	114.00	-22.78	V	Peak
2450.0000	87.48	31.22	2.20	34.51	86.39	94.00	-7.61	V	AVG
4900.0000	47.21	34.98	2.49	34.14	50.54	74.00	-23.46	V	Peak
4900.0000	41.41	34.98	2.49	34.14	44.74	54.00	-9.26	V	AVG
7350.0000	38.24	36.01	3.01	34.56	42.70	74.00	-31.30	V	Peak
7350.0000	33.75	36.01	3.01	34.56	38.21	54.00	-15.79	V	AVG
9800.0000	*								
12250.0000	*								
14700.0000	*								
17150.0000	*								
2450.0000	89.73	31.12	2.20	34.51	88.54	114.00	-25.46	H	Peak
2450.0000	78.44	31.12	2.20	34.51	77.25	94.00	-16.75	H	AVG
4900.0000	42.51	34.98	2.49	34.14	45.84	74.00	-28.16	H	Peak
4900.0000	36.28	34.98	2.49	34.14	39.61	54.00	-14.39	H	AVG
7350.0000	38.89	36.01	3.01	34.56	43.35	74.00	-30.65	H	Peak
7350.0000	32.51	36.01	3.01	34.56	36.97	54.00	-17.03	H	AVG
9800.0000	*								
12250.0000	*								
14700.0000	*								
17150.0000	*								

Note:

1. Level = Receiver Read level + Antenna Factor + Cable Loss – Pre-amplifier Factor
2. “*” means the test results were attenuated more than 20dB below the permissible limits, so the results don't record in the report.

Test Mode: CH04 (High channel)									
Frequency (MHz)	Read Level (dBuV)	Antenna Factor (dB/m)	Cable Loss (dB)	Preamp Factor (dB)	Level (dBuV/m)	Limit (dBuV/m)	Over Limit (dB)	Pol.	Detector
2468.0000	96.01	31.65	2.23	36.07	93.82	114.00	-20.18	V	Peak
2468.0000	84.45	31.65	2.23	36.07	82.26	94.00	-11.74	V	AVG
4936.0000	50.21	35.06	2.60	34.93	52.94	74.00	-21.06	V	Peak
4936.0000	41.62	35.06	2.60	34.93	44.35	54.00	-9.65	V	AVG
7404.0000	37.93	36.19	3.12	35.11	42.13	74.00	-31.87	V	Peak
7404.0000	33.51	36.19	3.12	35.11	37.71	54.00	-16.29	V	AVG
9872.0000	*								
12340.0000	*								
14808.0000	*								
17276.0000	*								
2468.0000	91.67	31.65	2.23	36.07	89.48	114.00	-24.52	H	Peak
2468.0000	73.24	31.65	2.23	36.07	71.05	94.00	-22.95	H	AVG
4936.0000	44.25	35.06	2.60	34.93	46.98	74.00	-27.02	H	Peak
4936.0000	37.23	35.06	2.60	34.93	39.96	54.00	-14.04	H	AVG
7404.0000	42.65	36.19	3.12	35.11	46.85	74.00	-27.15	H	Peak
7404.0000	34.21	36.19	3.12	35.11	38.41	54.00	-15.59	H	AVG
9872.0000	*								
12340.0000	*								
14808.0000	*								
17276.0000	*								

Note:

1. Level = Receiver Read level + Antenna Factor + Cable Loss – Pre-amplifier Factor
2. “*” means the test results were attenuated more than 20dB below the permissible limits, so the results don't record in the report.

Radiated Band Edge:

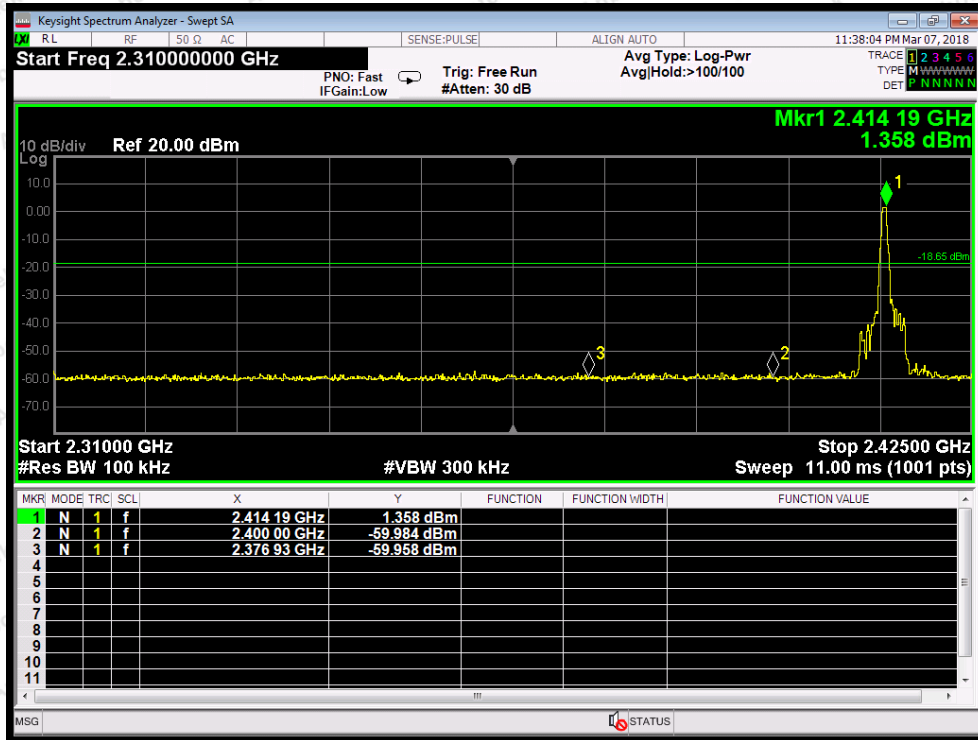
Test Mode:					Test channel: Lowest			
Peak Value								
Frequency (MHz)	Read Level (dBuV)	Antenna Factor (dB/m)	Cable Loss (dB)	Preamp Factor (dB)	Level (dBuV/m)	Limit (dBuV/m)	Over Limit (dB)	Pol.
2390.00	51.00	29.15	3.41	34.01	49.55	74.00	-24.45	V
2400.00	54.03	29.16	3.43	34.01	52.61	74.00	-21.39	V
2390.00	50.85	29.15	3.41	34.01	49.40	74.00	-24.60	H
2400.00	53.42	29.16	3.43	34.01	52.00	74.00	-22.00	H
Average Value								
Frequency (MHz)	Read Level (dBuV)	Antenna Factor (dB/m)	Cable Loss (dB)	Preamp Factor (dB)	Level (dBuV/m)	Limit (dBuV/m)	Over Limit (dB)	Pol.
2390.00	40.49	29.15	3.41	34.01	39.04	54.00	-14.96	V
2400.00	43.25	29.16	3.43	34.01	41.83	54.00	-12.17	V
2390.00	40.17	29.15	3.41	34.01	38.72	54.00	-15.28	H
2400.00	42.58	29.16	3.43	34.01	41.16	54.00	-12.84	H

Test Mode:					Test channel: Highest			
Peak Value								
Frequency (MHz)	Read Level (dBuV)	Antenna Factor (dB/m)	Cable Loss (dB)	Preamp Factor (dB)	Level (dBuV/m)	Limit (dBuV/m)	Over Limit (dB)	Pol.
2483.50	55.43	29.28	3.53	34.03	54.21	74.00	-19.79	V
2500.00	51.81	29.30	3.56	34.03	50.64	74.00	-23.36	V
2483.50	56.21	29.28	3.53	34.03	54.99	74.00	-19.01	H
2500.00	54.63	29.30	3.56	34.03	53.46	74.00	-20.54	H
Average Value								
Frequency (MHz)	Read Level (dBuV)	Antenna Factor (dB/m)	Cable Loss (dB)	Preamp Factor (dB)	Level (dBuV/m)	Limit (dBuV/m)	Over Limit (dB)	Pol.
2483.50	43.40	29.28	3.53	34.03	42.18	54.00	-11.82	V
2500.00	40.16	29.30	3.56	34.03	38.99	54.00	-15.01	V
2483.50	40.57	29.28	3.53	34.03	39.35	54.00	-14.65	H
2500.00	37.25	29.30	3.56	34.03	36.08	54.00	-17.92	H

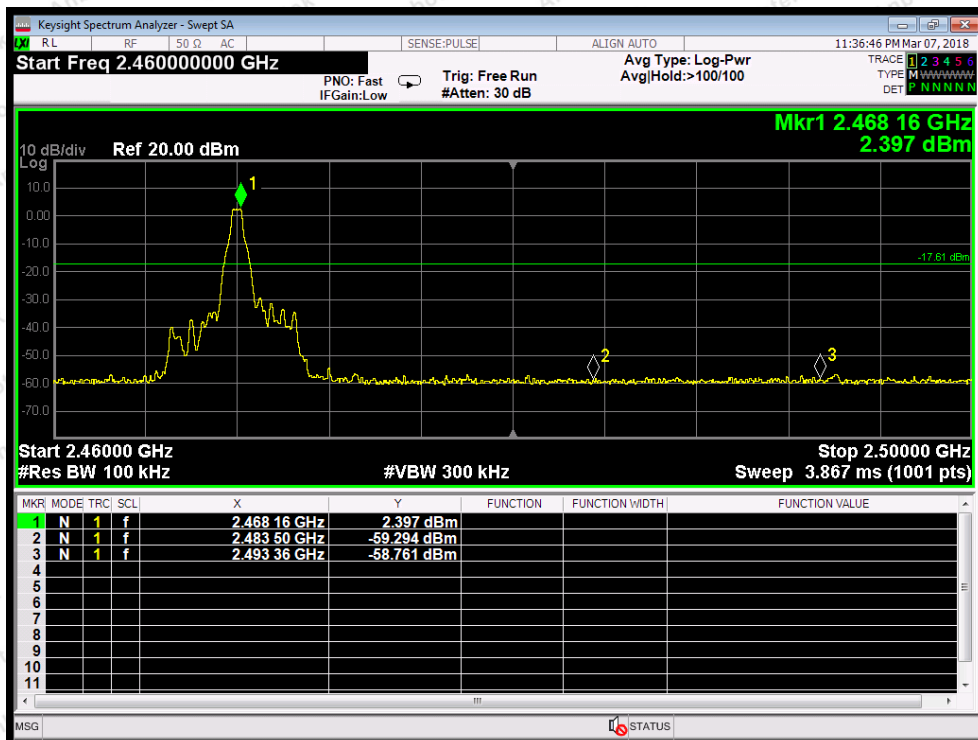
Remark:

1. Level = Receiver Read level + Antenna Factor + Cable Loss – Pre-amplifier Factor

Conducted band edge



Lowest

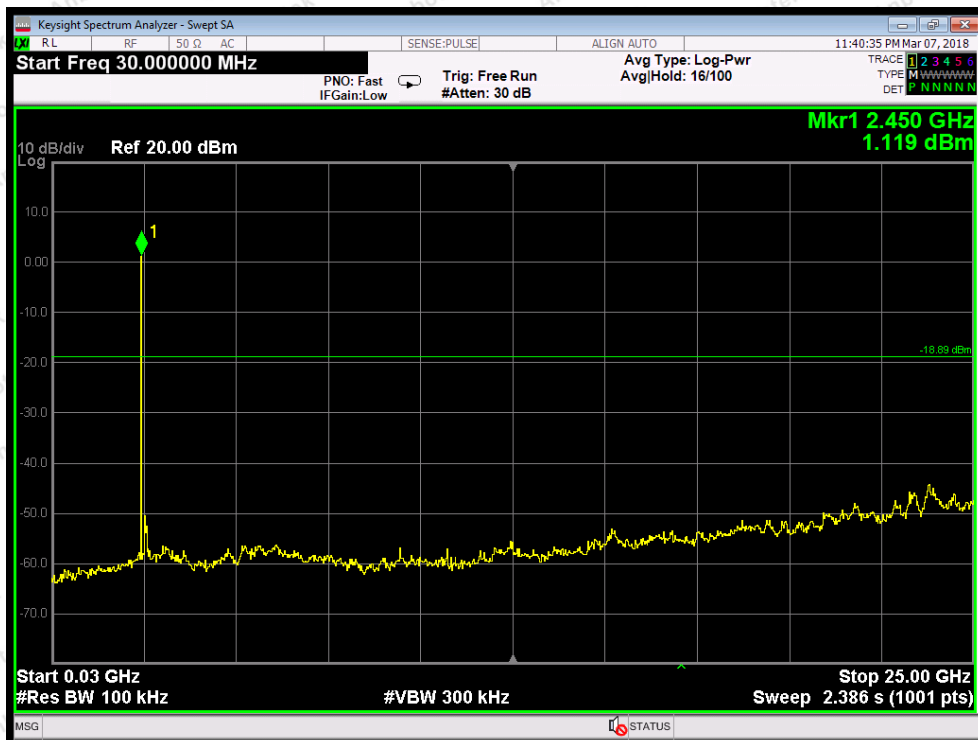


Highest

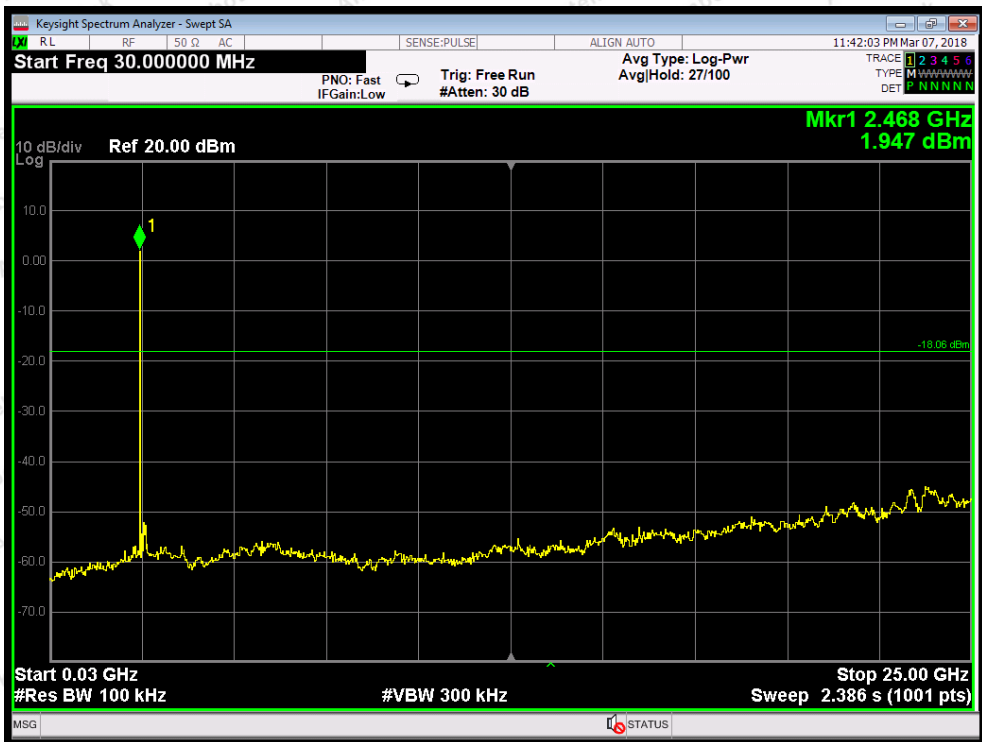
Conducted Emission Method



CH: Low



CH: Middle



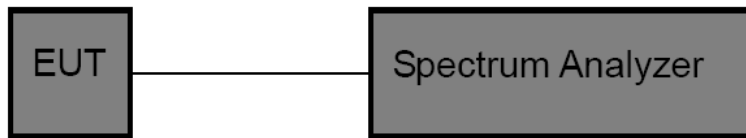
CH: High

5. 20dB Bandwidth Test

5.1. Test Standard and Limit

Test Standard	FCC Part15 C Section 15.249
---------------	-----------------------------

5.2. Test Setup



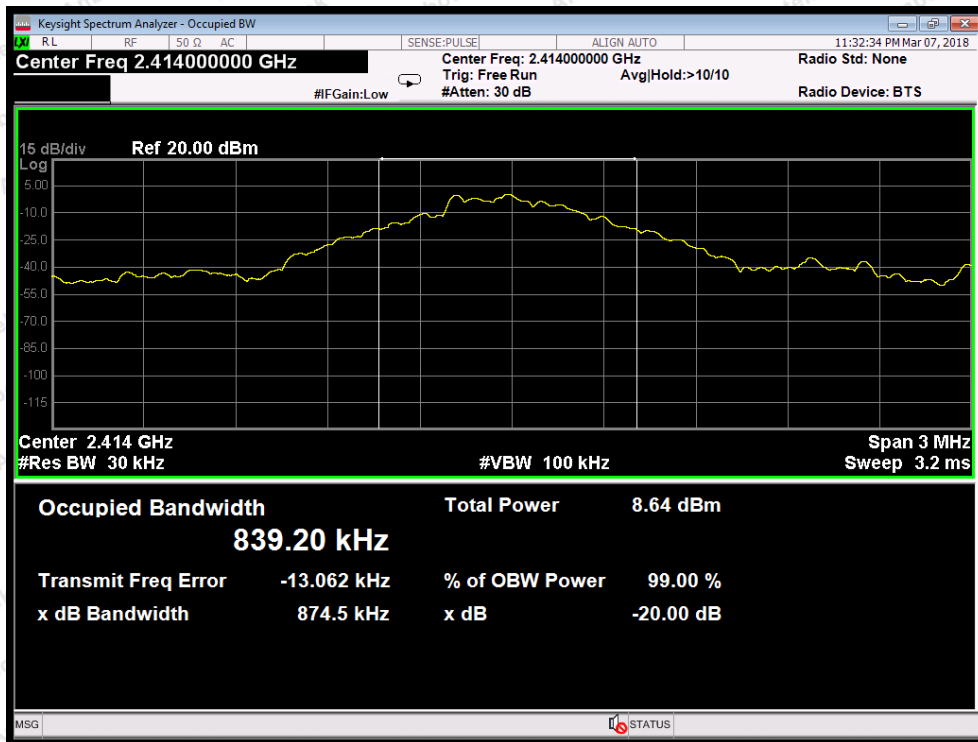
5.3. Test Procedure

1. Place the EUT on the table and set it in the transmitting mode.
2. Remove the antenna from the EUT and then connect a low loss RF cable from the antenna port to the spectrum analyzer.
3. Set the spectrum analyzer as:
 RBW = 30kHz, VBW ≥ 3*RBW = 100kHz,
 Detector= Average
 Trace mode= Max hold.
 Sweep- auto couple.
4. Mark the peak frequency and -20dB (upper and lower) frequency.
5. Repeat until all the rest channels are investigated.

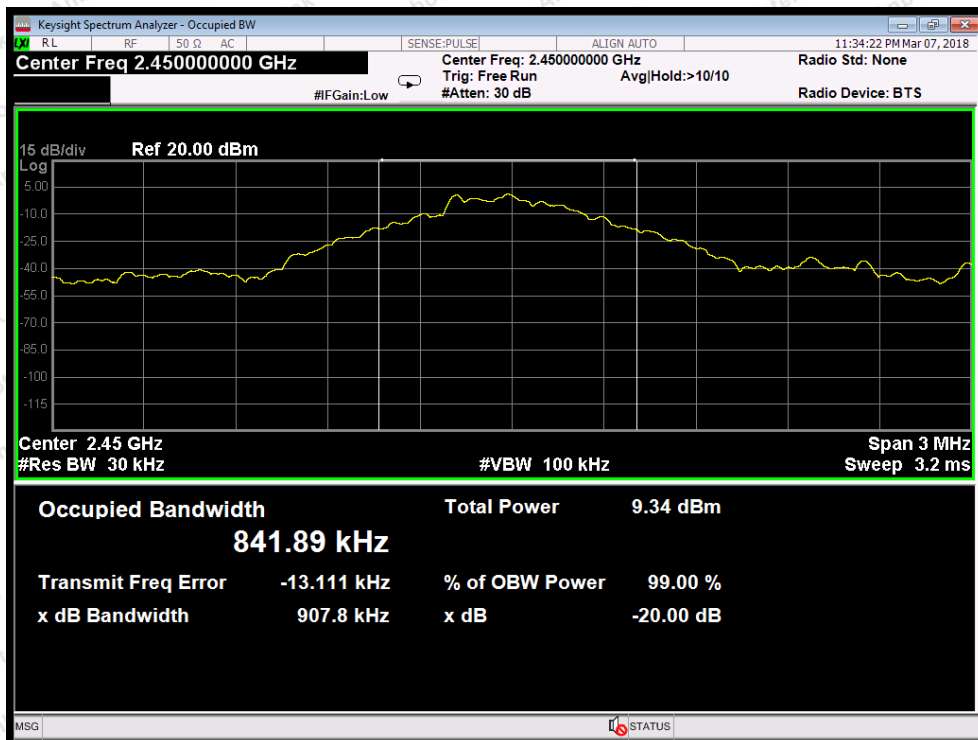
5.4. Test Data

Test Item	: 20dB Bandwidth	Test Mode	: Mode 1
Test Voltage	: DC 12V	Temperature	: 24°C
Test Result	: PASS	Humidity	: 55%RH

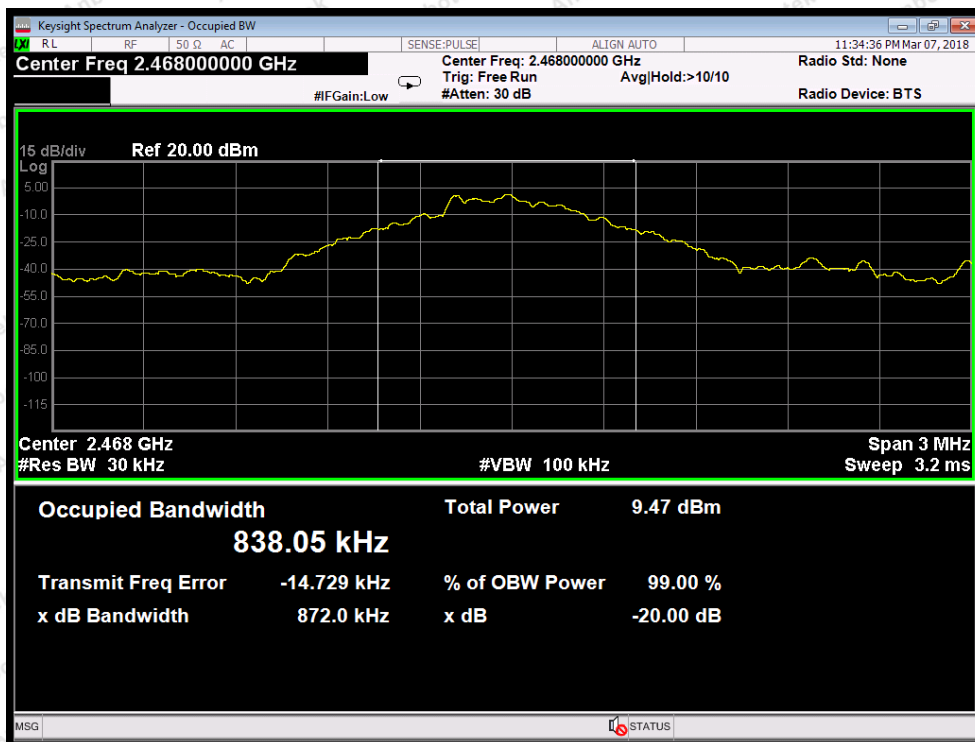
Frequency (MHz)	Bandwidth (kHz)	Result
2414MHZ	874.5	PASS
2450MHZ	907.8	PASS
2468MHZ	872.0	PASS



Test Mode: Low



Test Mode: Middle



Test Mode: High

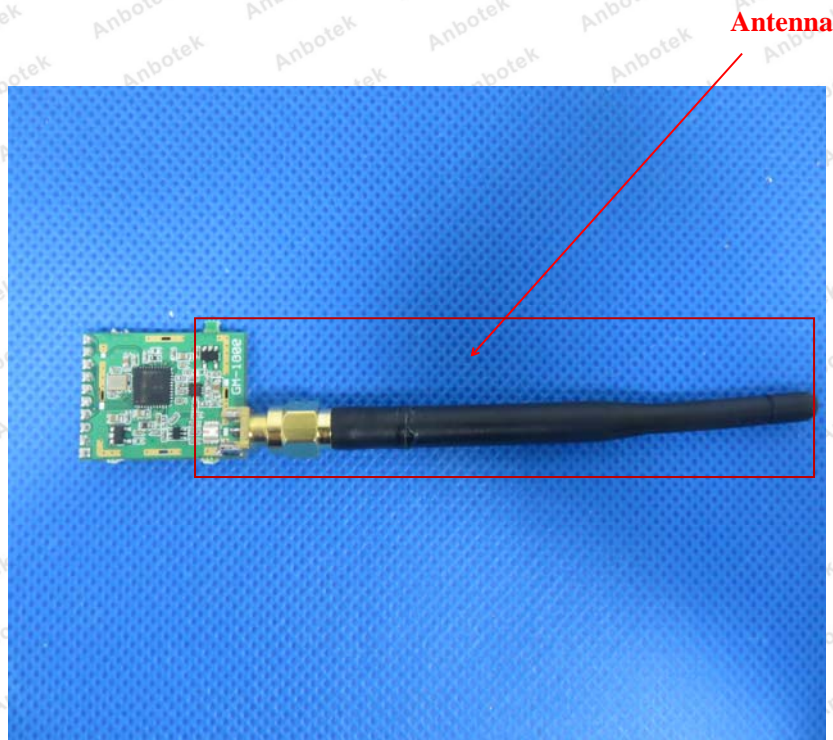
6. Antenna Requirement

6.1. Test Standard and Requirement

Test Standard	FCC Part15 Section 15.203
Requirement	1) 15.203 requirement: An intentional radiator shall be designed to ensure that no antenna other than that furnished by the responsible party shall be used with the device. The use of a permanently attached antenna or of an antenna that uses a unique coupling to the intentional radiator, the manufacturer may design the unit so that a broken antenna can be replaced by the user, but the use of a standard antenna jack or electrical connector is prohibited.

6.2. Antenna Connected Construction

The antenna is a Columnar Antenna which permanently attached, and the best case gain of the antenna is 0 dBi. It complies with the standard requirement.

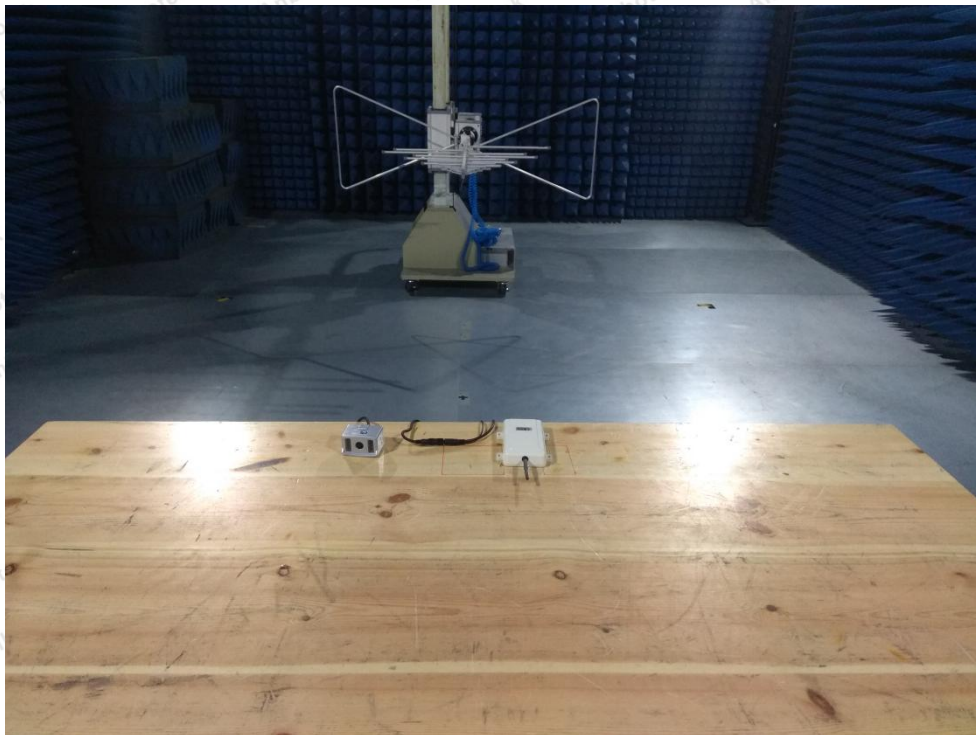


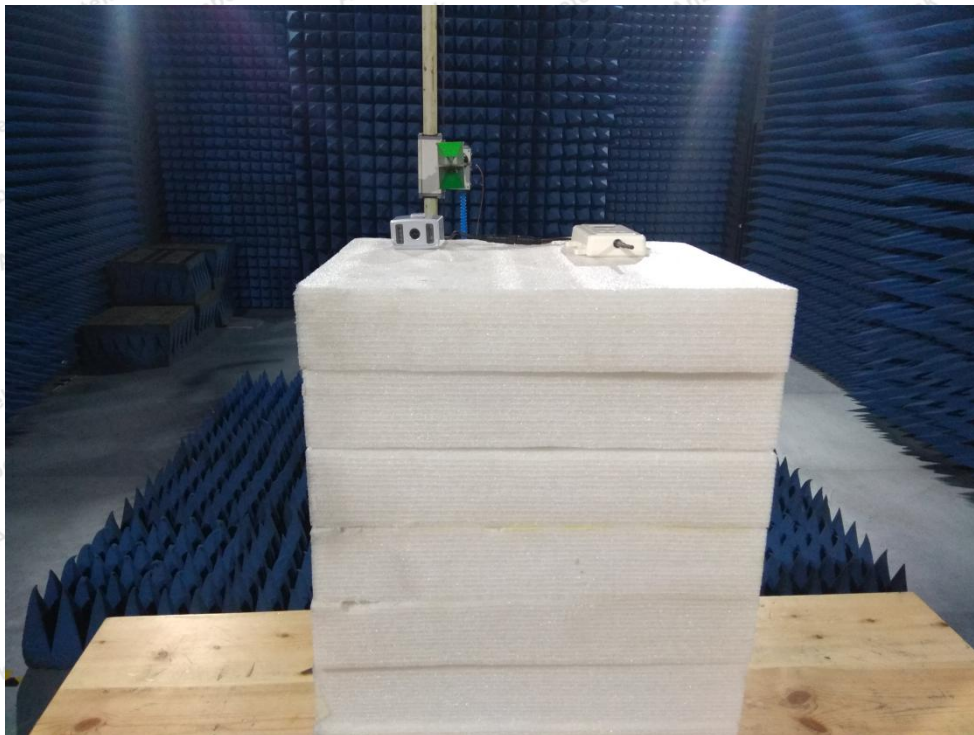
APPENDIX I-- TEST SETUP PHOTOGRAPH

Photo of Conducted Emission Test



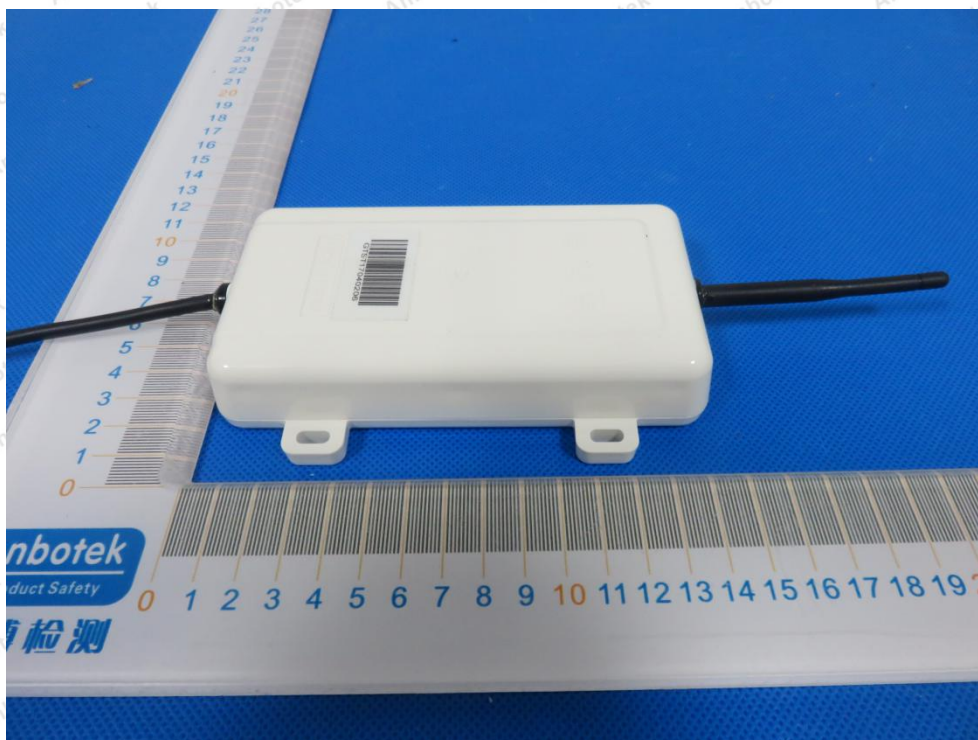
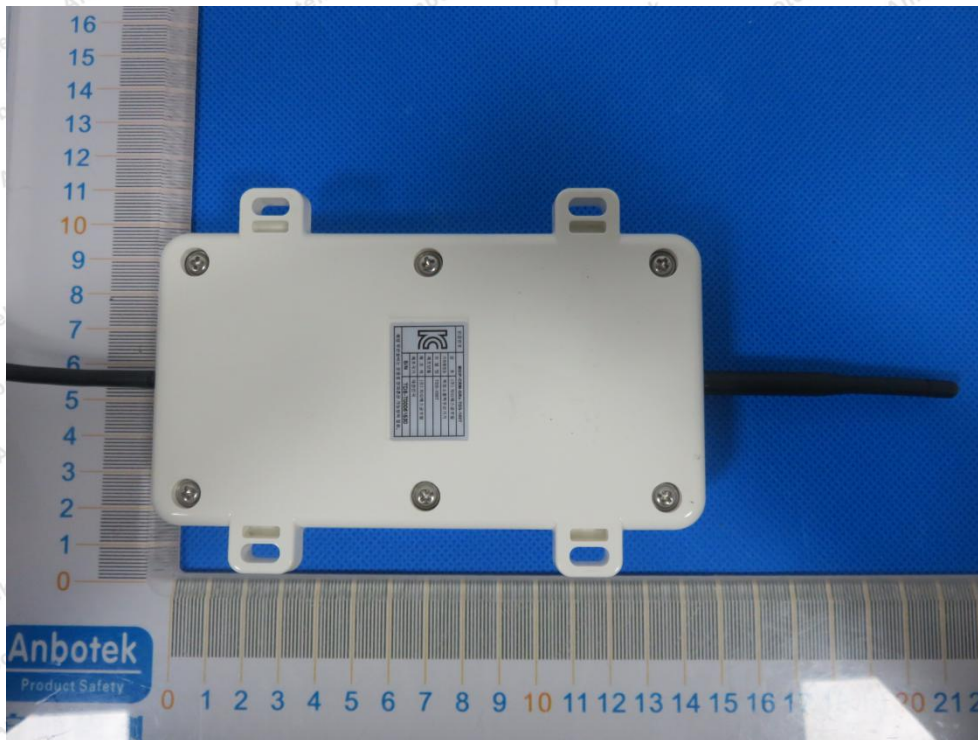
Photo of Radiation Emission Test

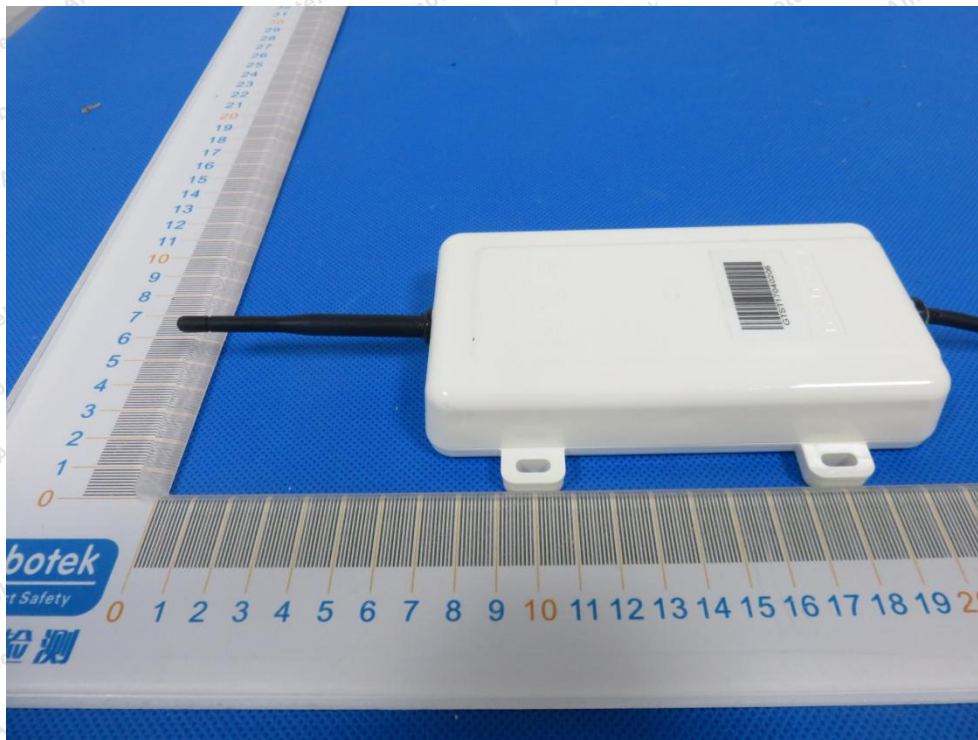




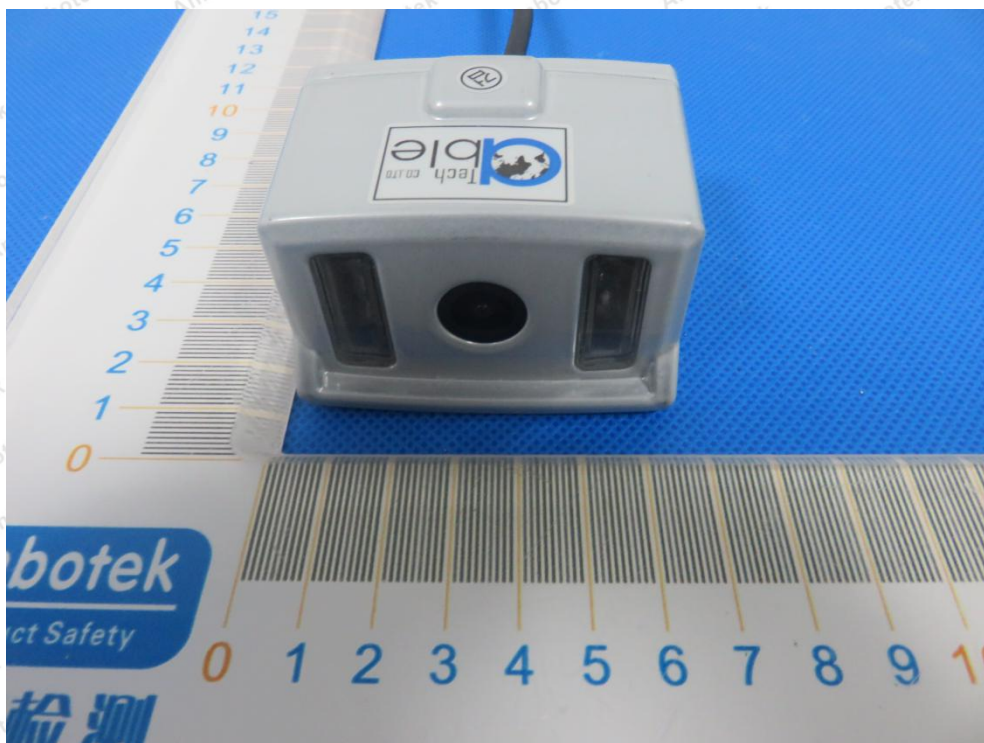
APPENDIX II -- EXTERNAL PHOTOGRAPH

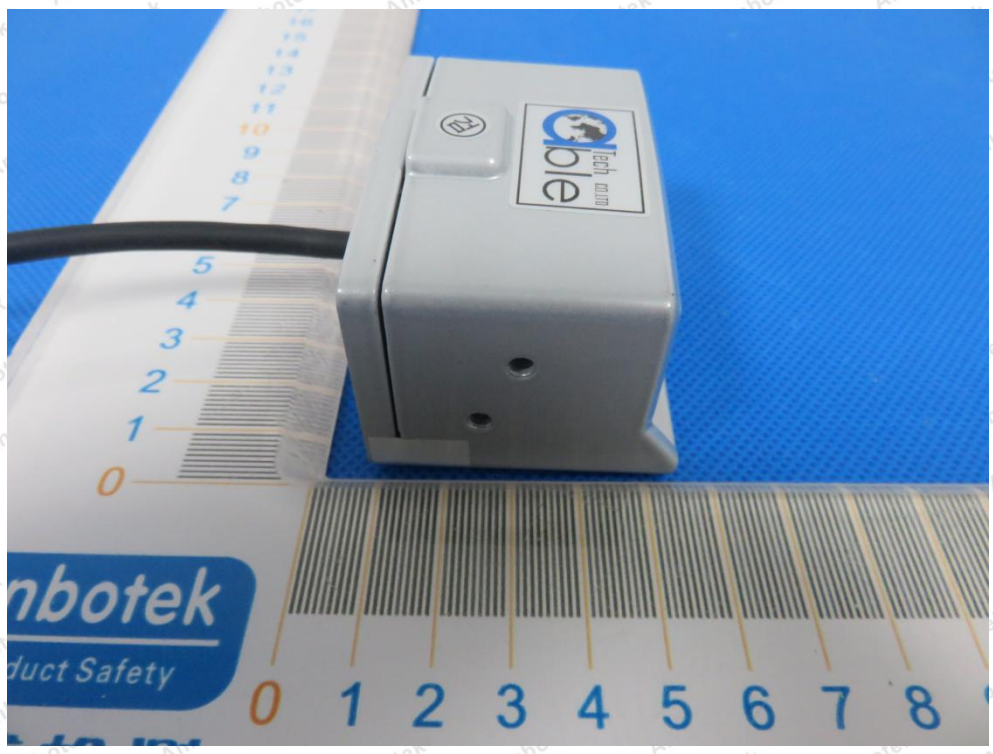
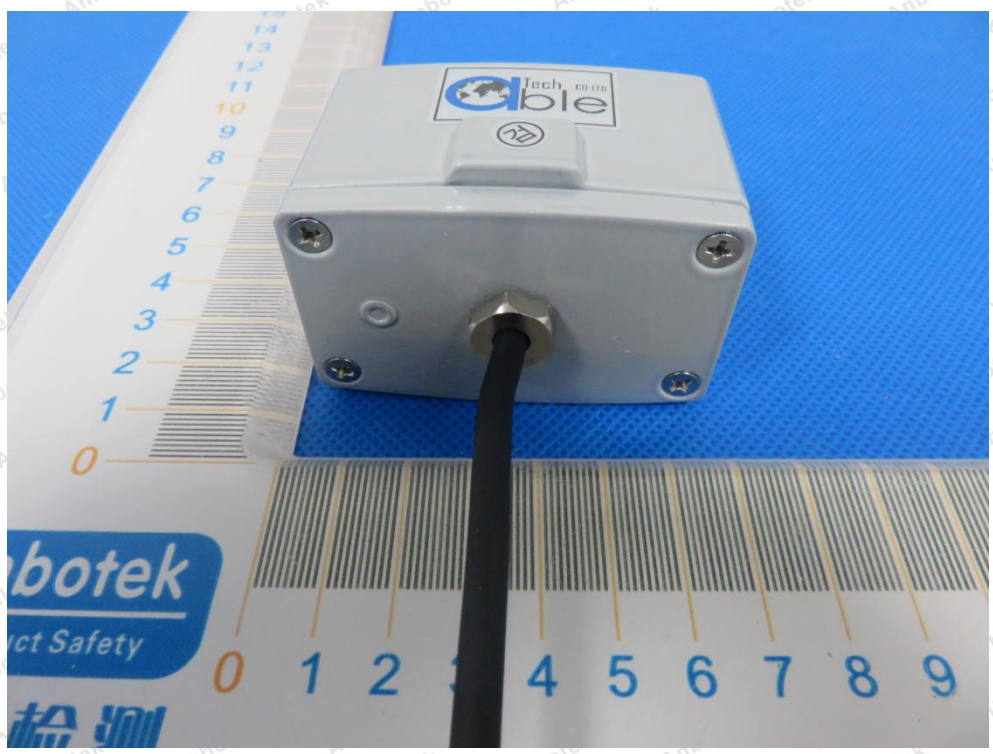


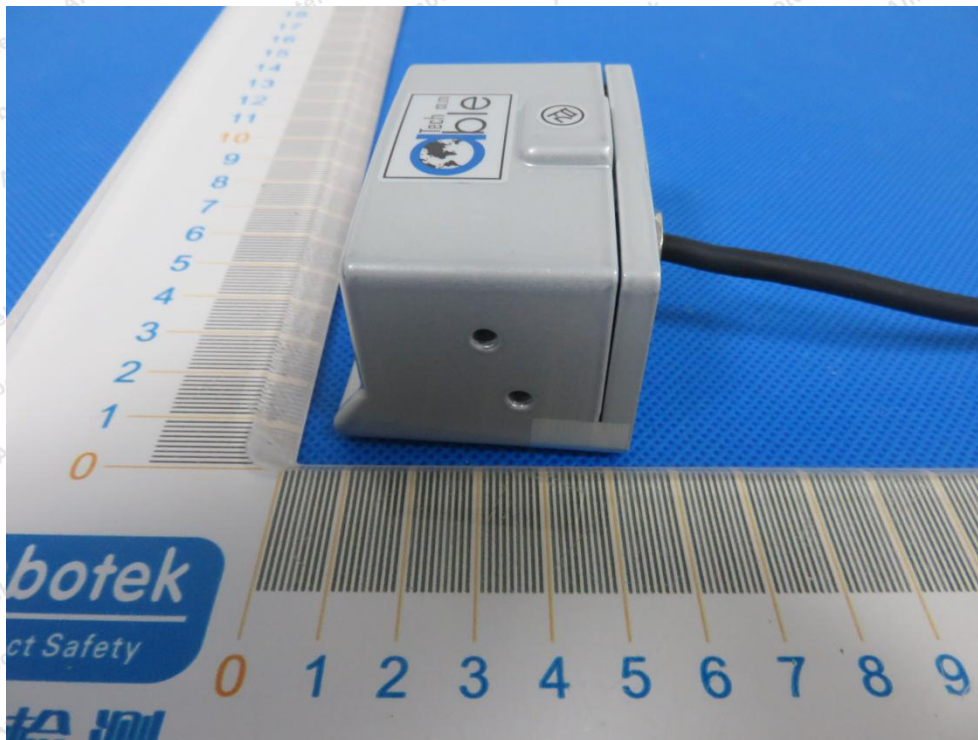








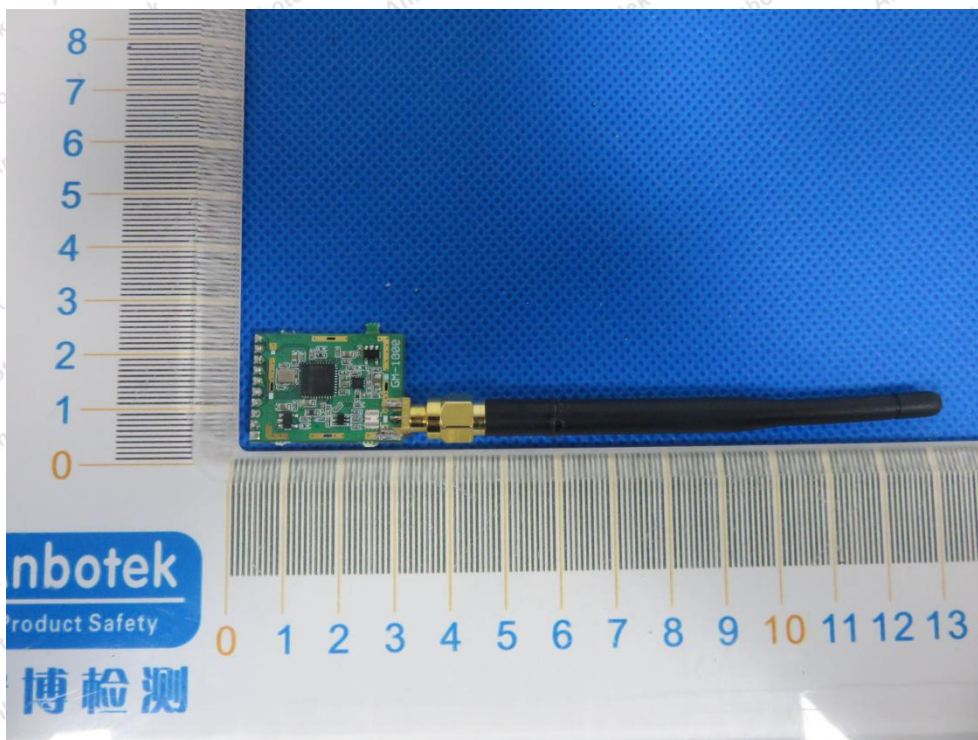
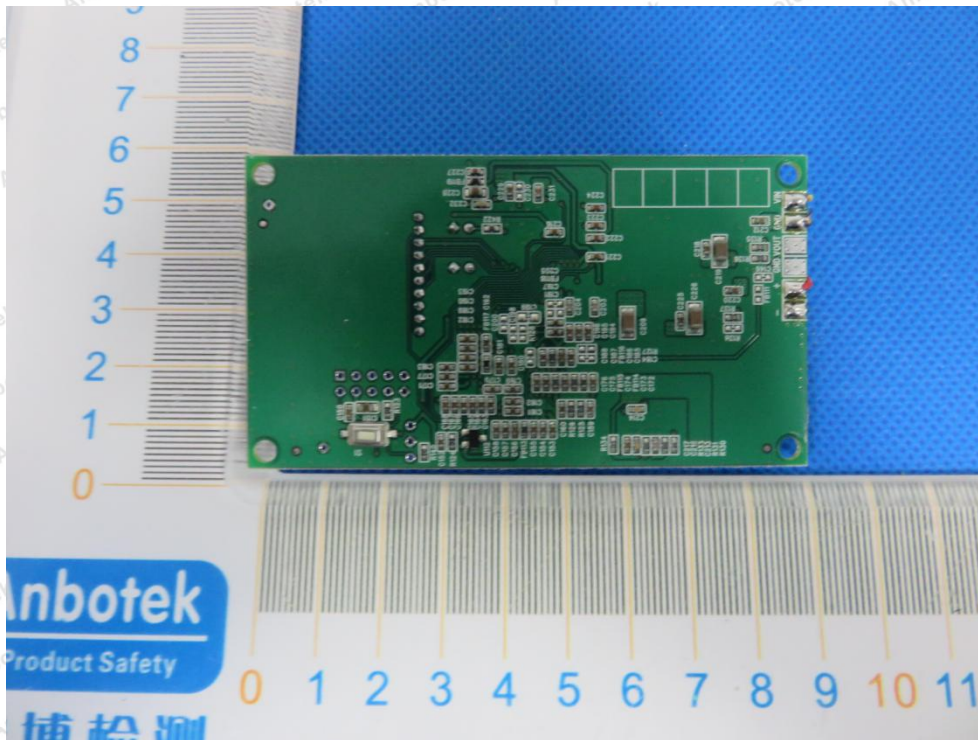


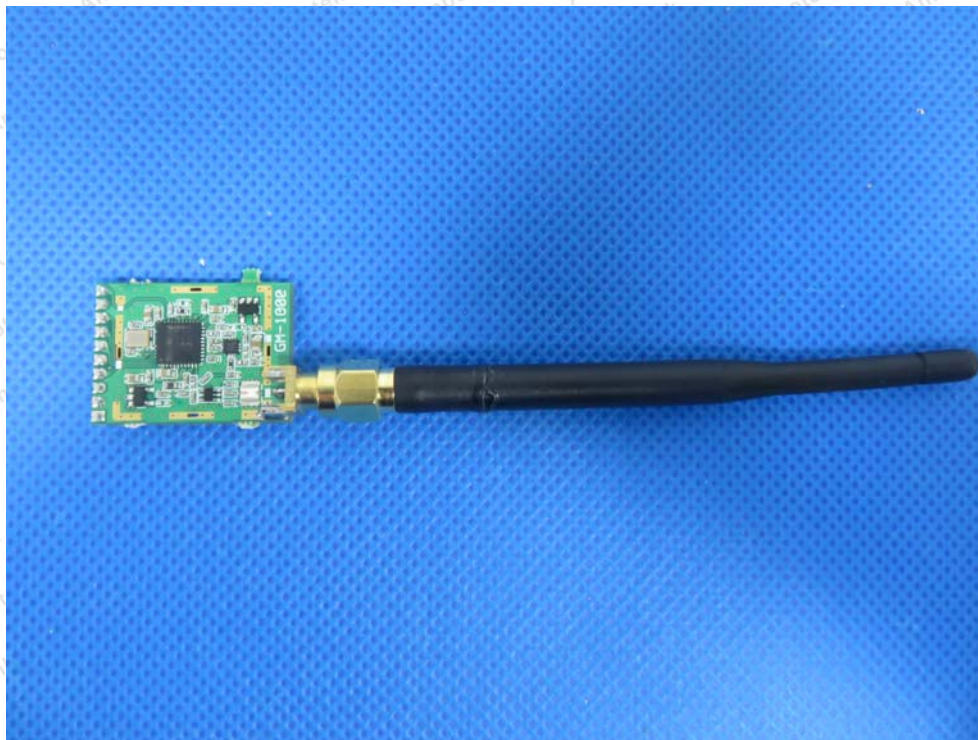
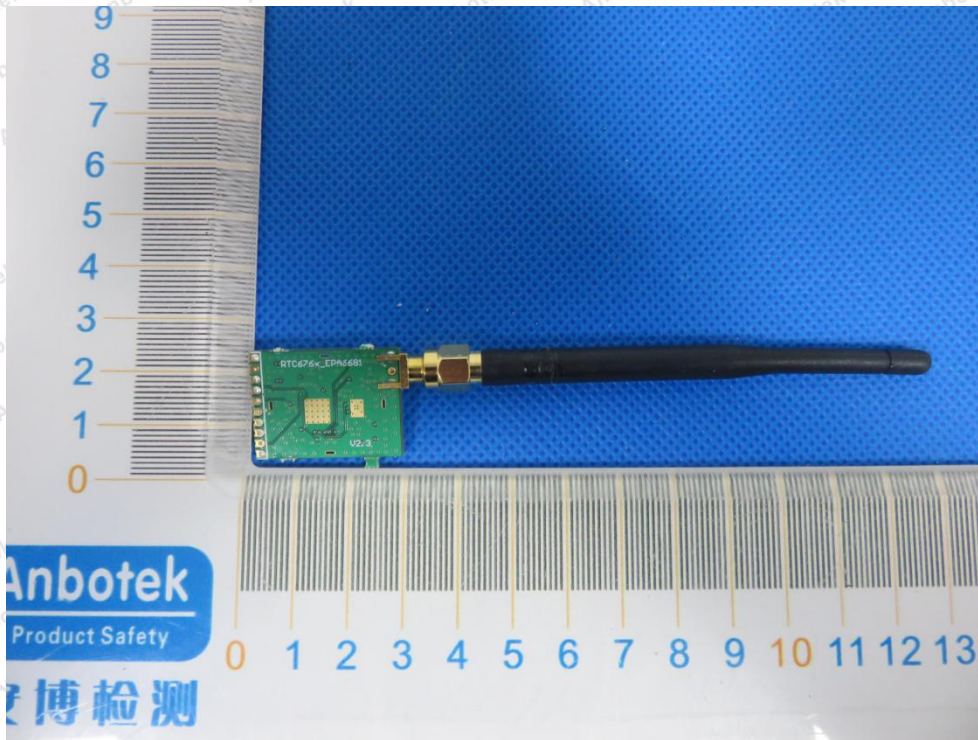


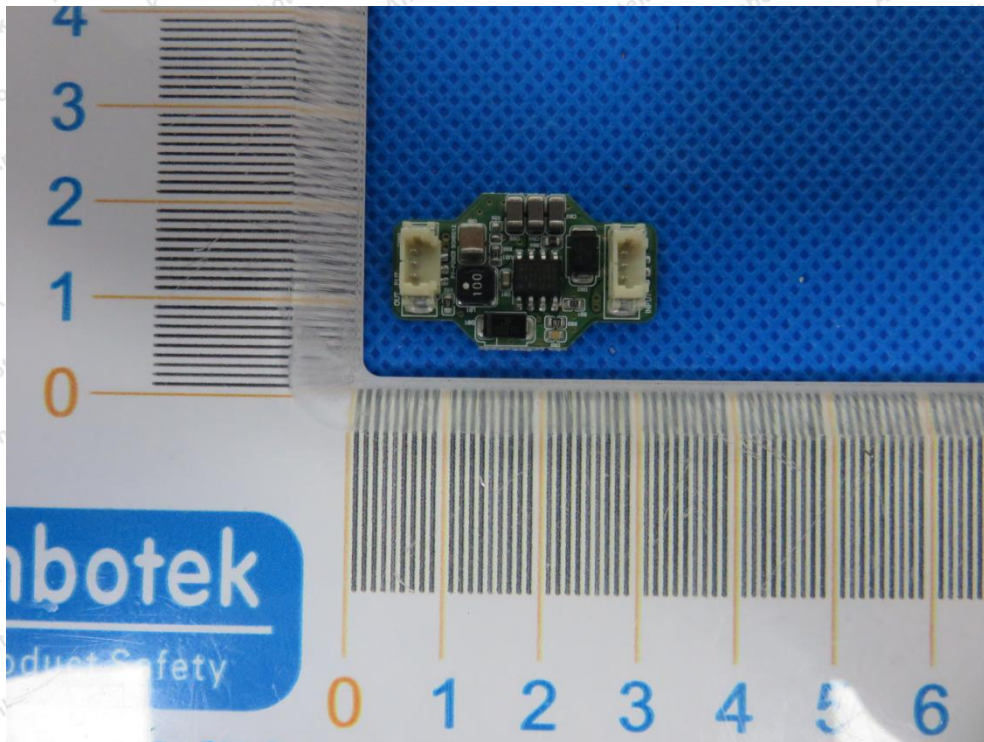
APPENDIX III -- INTERNAL PHOTOGRAPH

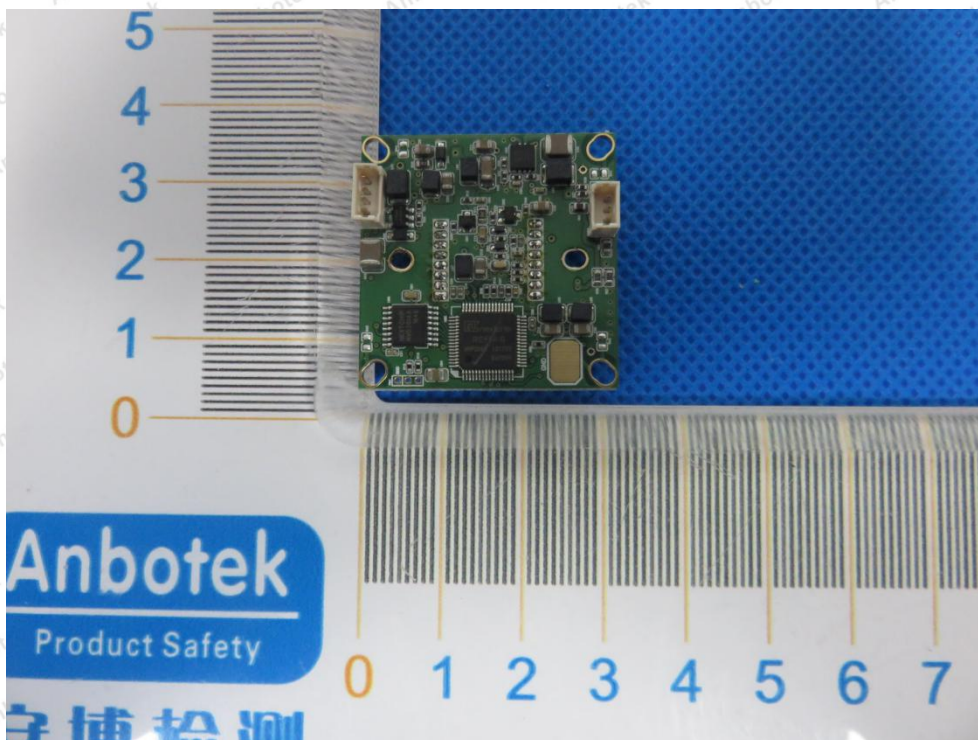
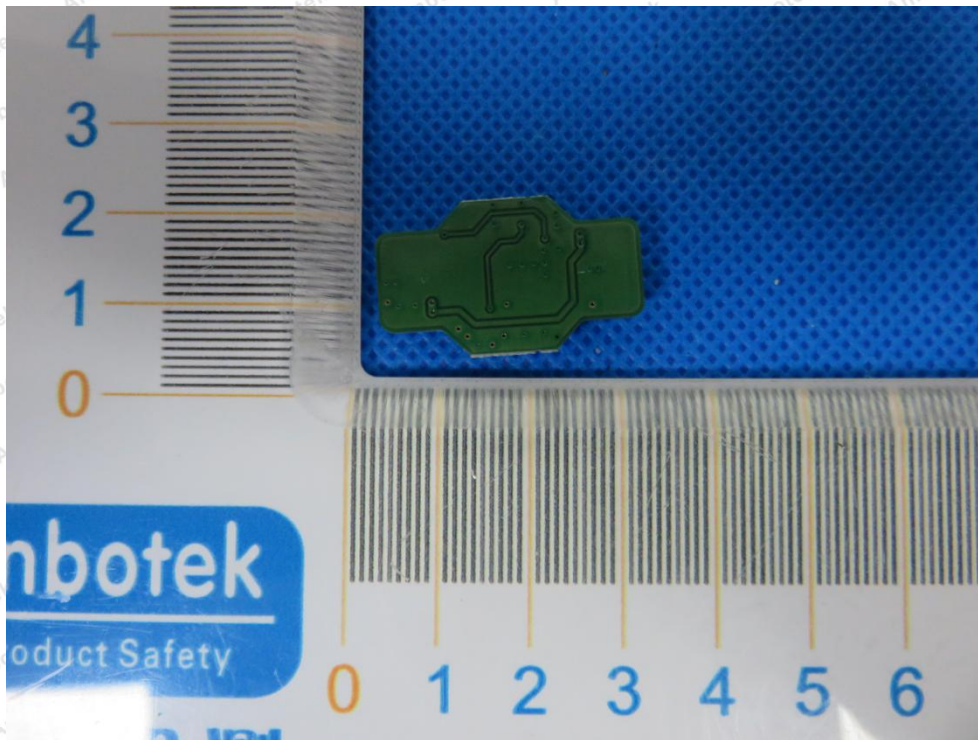


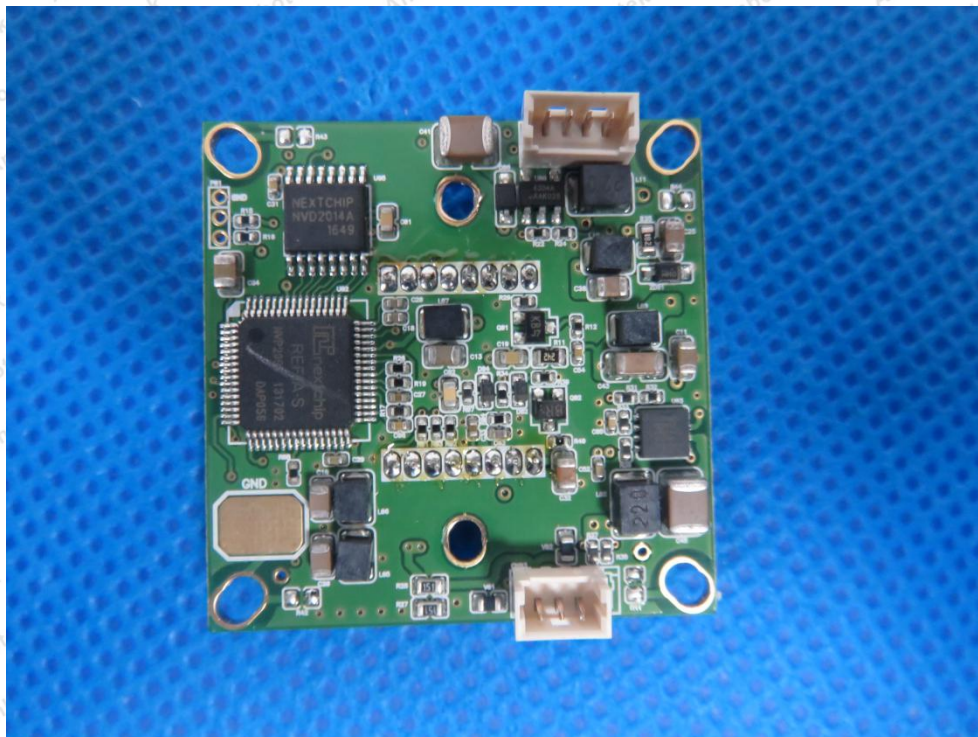
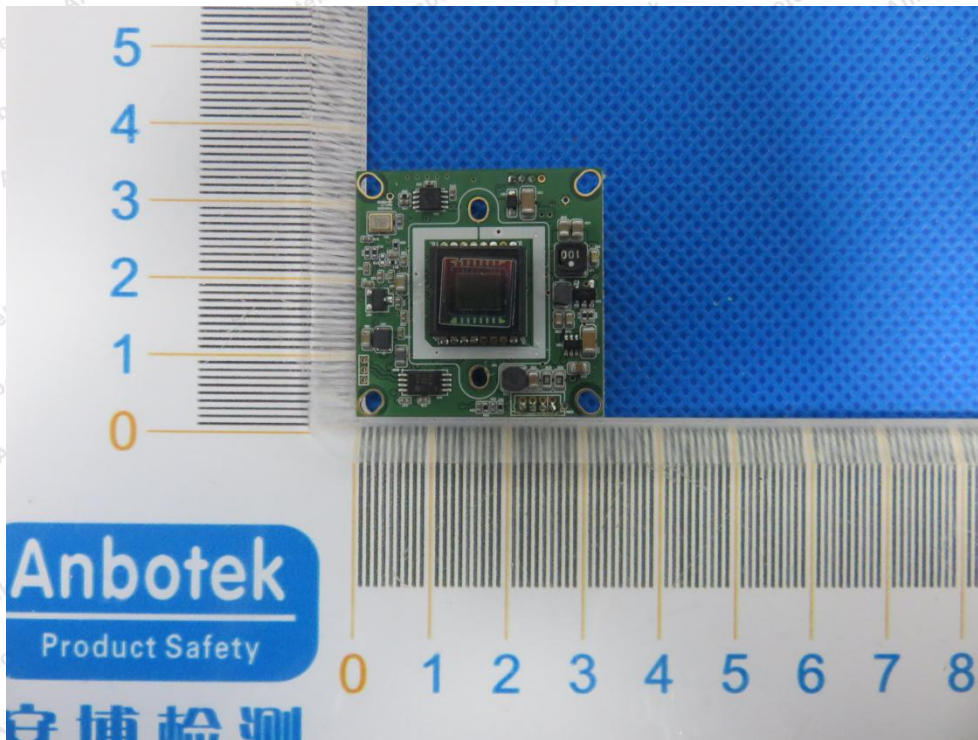


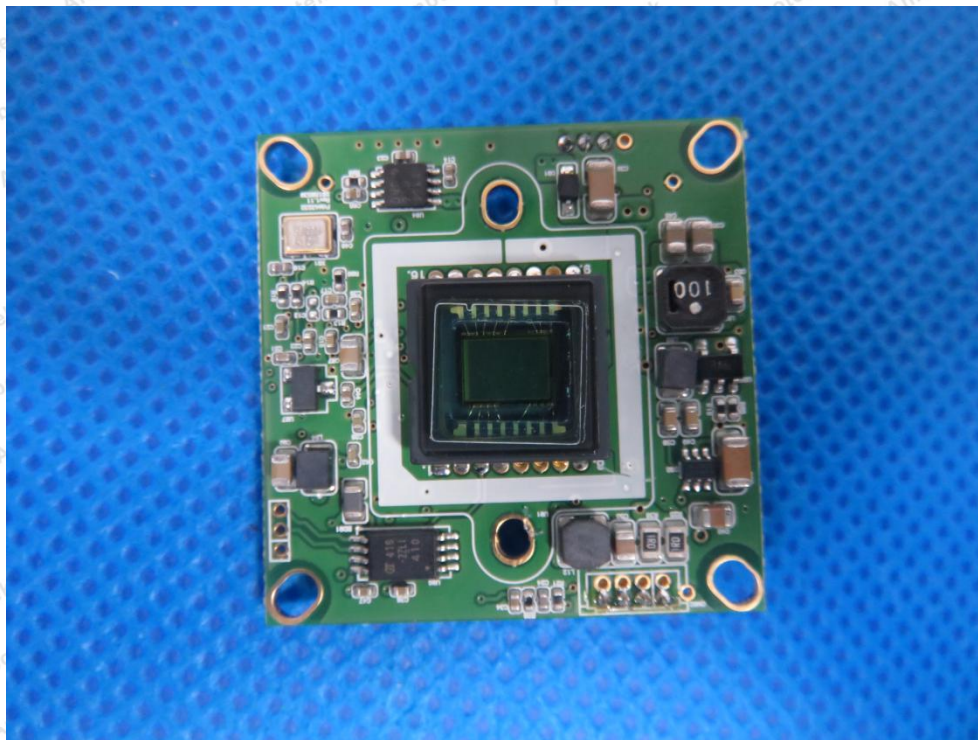












----- End of Report -----