

OpenPath Security, Inc.
Electrode v1.0

OpenPath Security, Inc.
LED Board v1.0.4

U1
R1
U2
J1
C2

73CJ00T94
TLC5947

PARLEX 3817

WE



OpenPath Security, Inc.



OpenPath Security, Inc.
LED Board v1.0.4

73CJ00194
1LC5947

C2

PAR

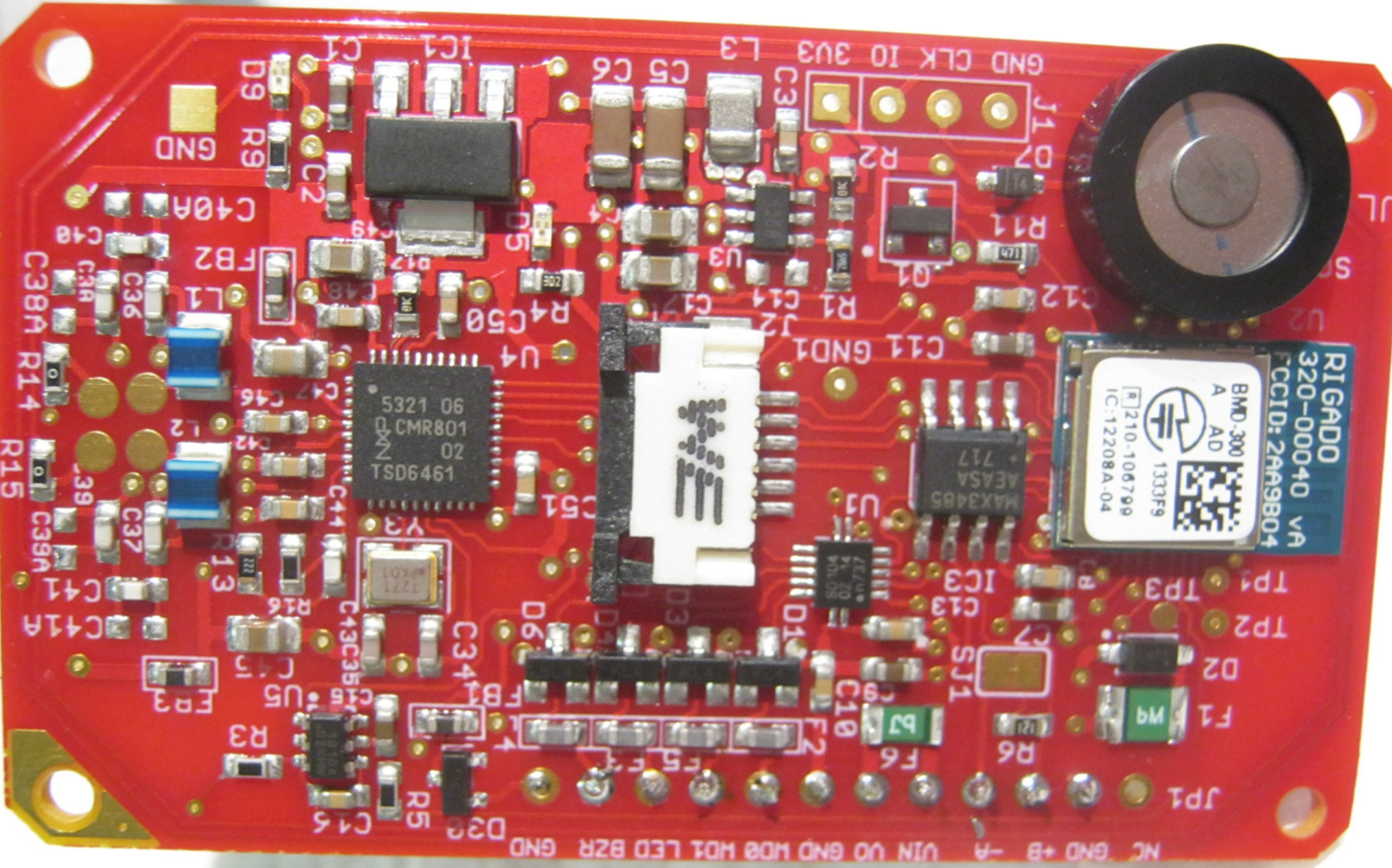


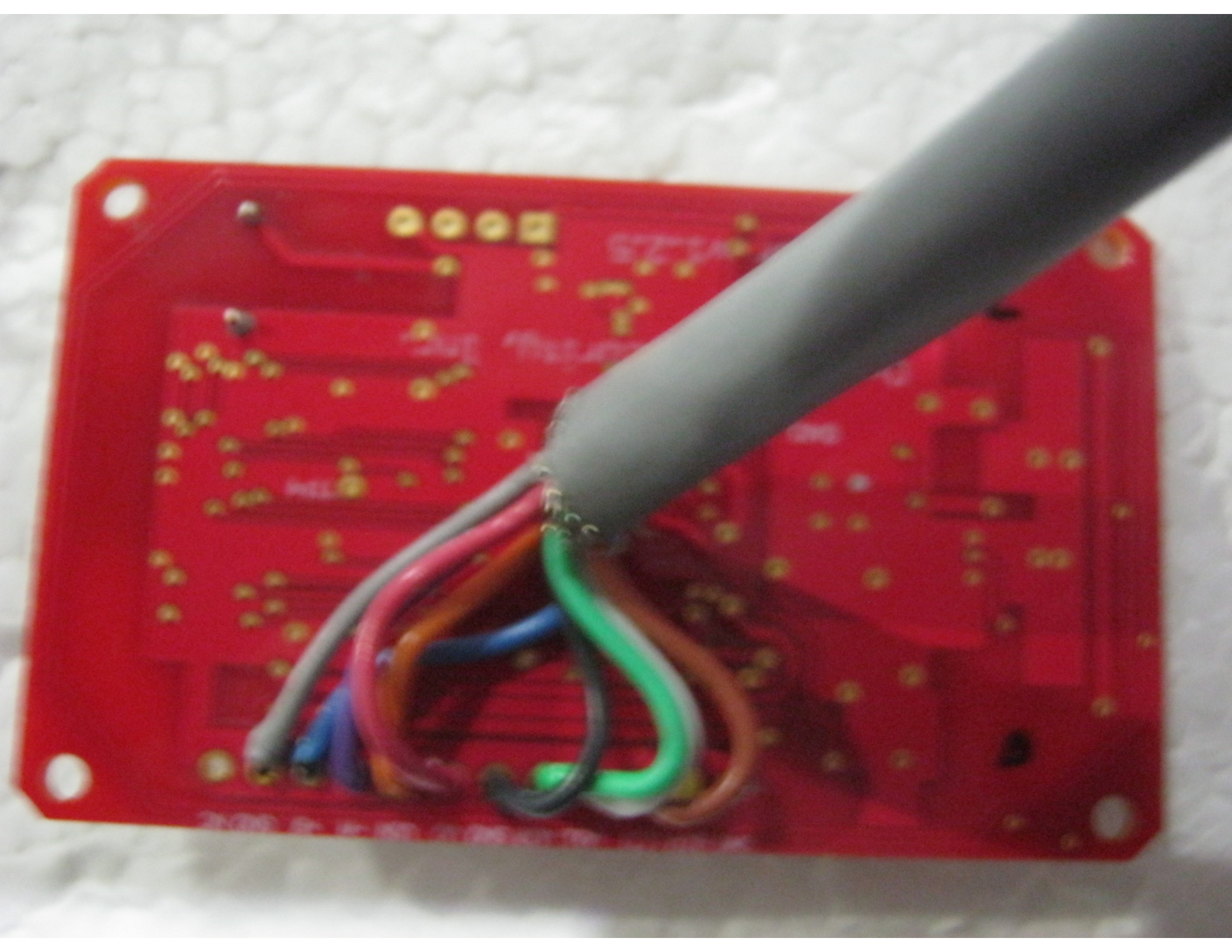
RIGADO
320-00040 VA
FCCID: 2AA9B04
BMD-300
A AD
1333F9
IC: 12208A-04
R210-106799

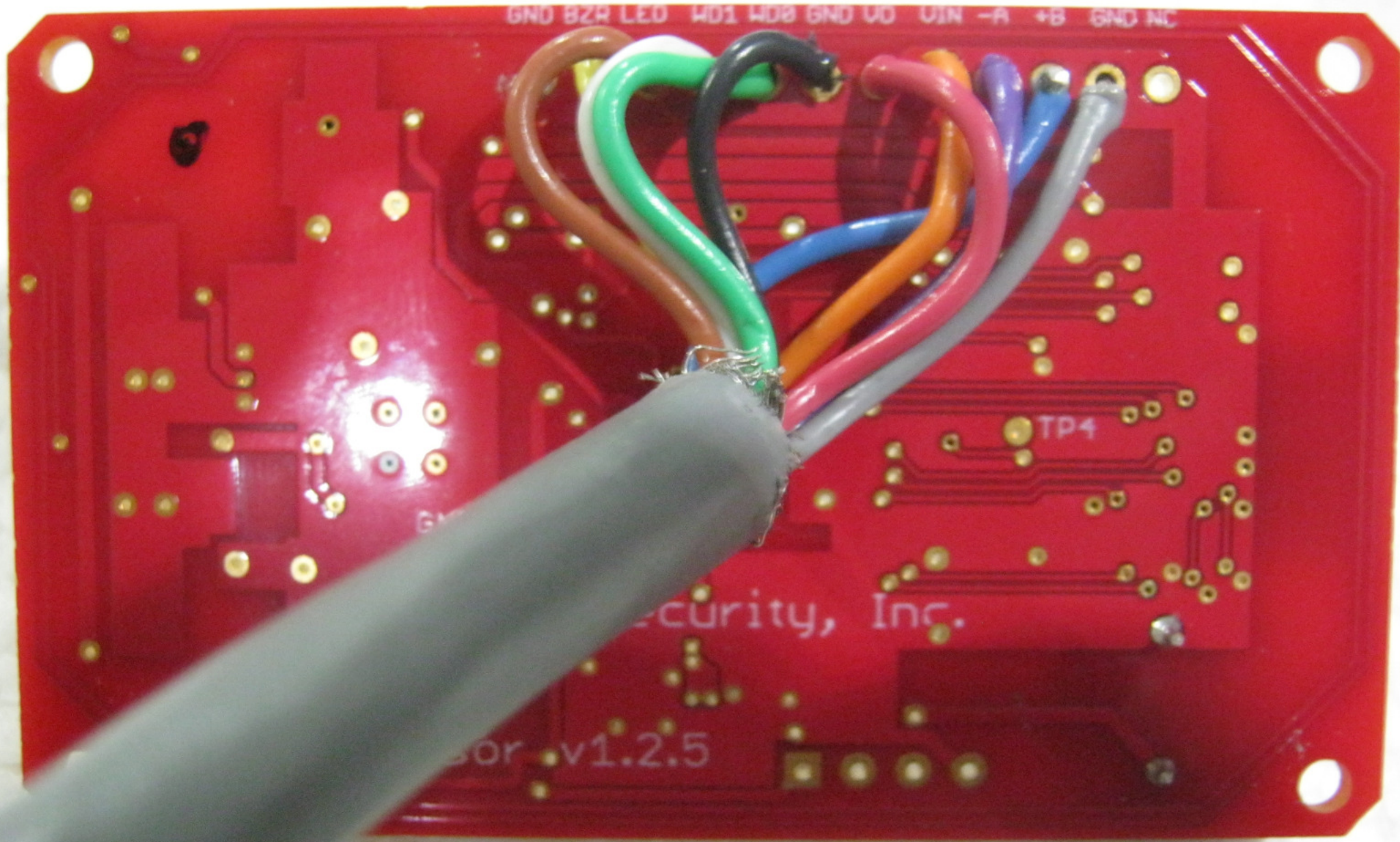
5321 06
CMR801 02
TSD6461

MAX3485
AEASA
+ 717

1221
MFC01







GND B2R LED W01 W08 GND UD UIN -A +B GND NC

TP4

Security, Inc.

or v1.2.5



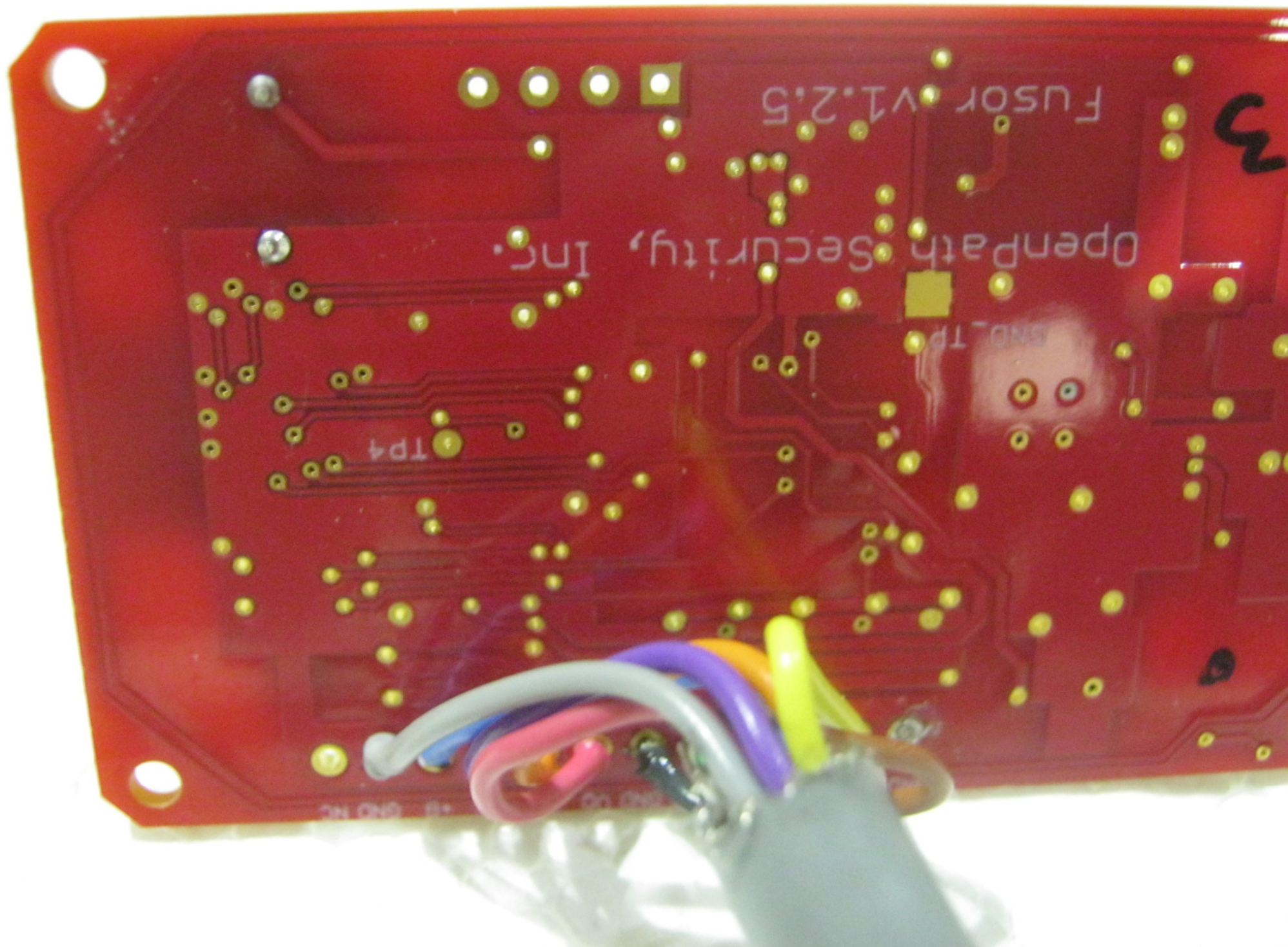
Fusor v1.2.5

OpenPath Security, Inc.

3

GND_Tp

TP4



Fusor v1.2.5

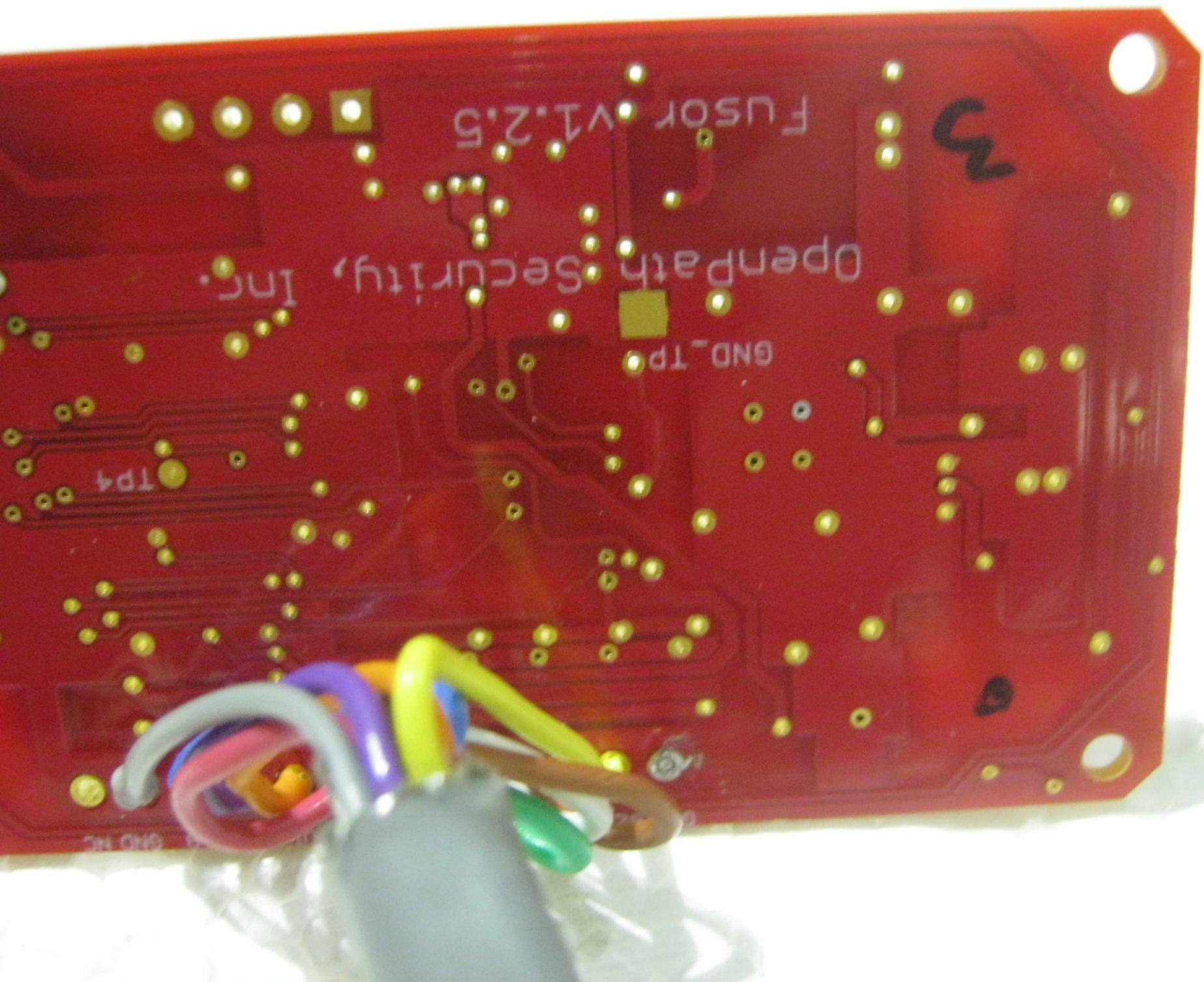
OpenPath Security, Inc.

TP4

GND_TP

3

NC GND



FUSOR v1.2.5

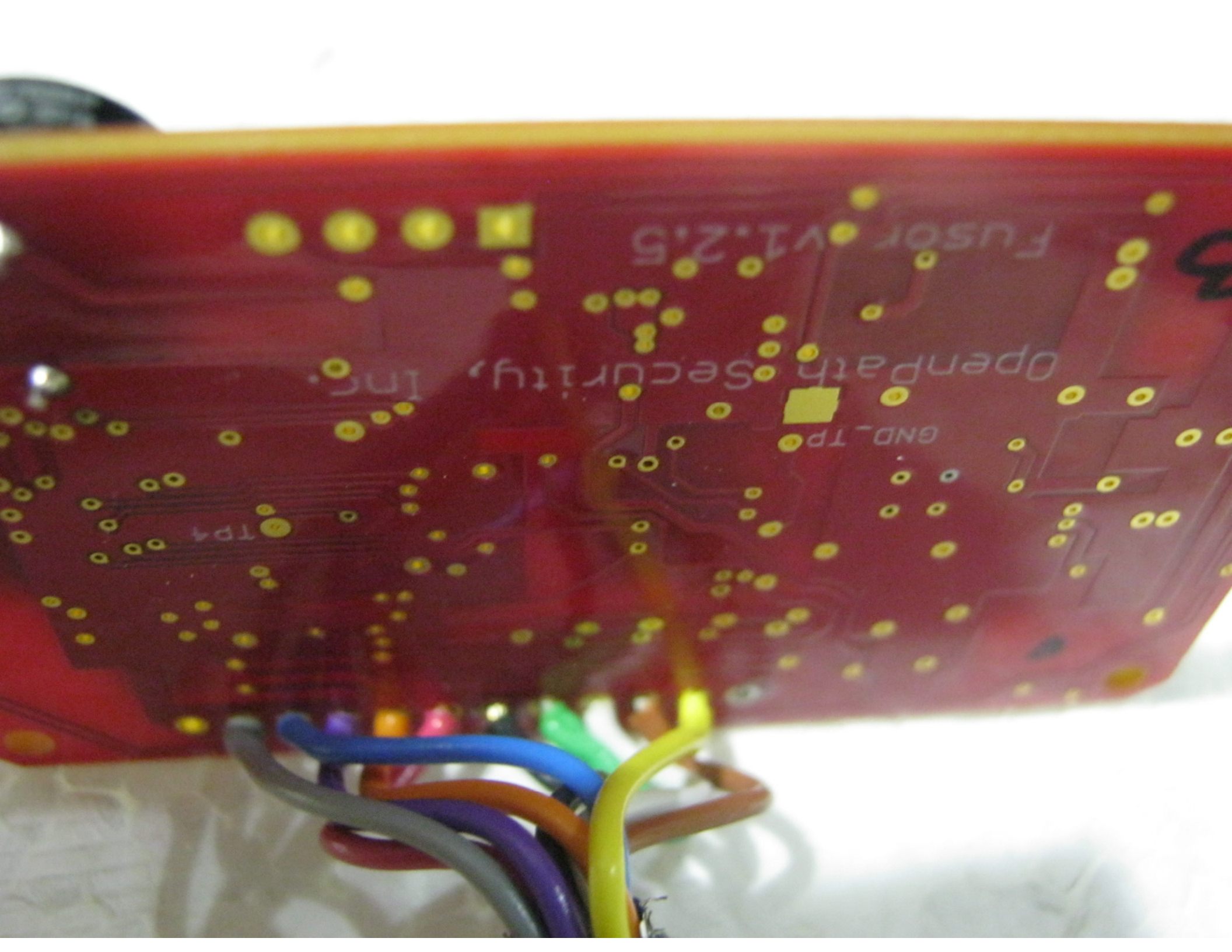
3

OpenPath Security, Inc.

GND_TP

TP4

GND NC

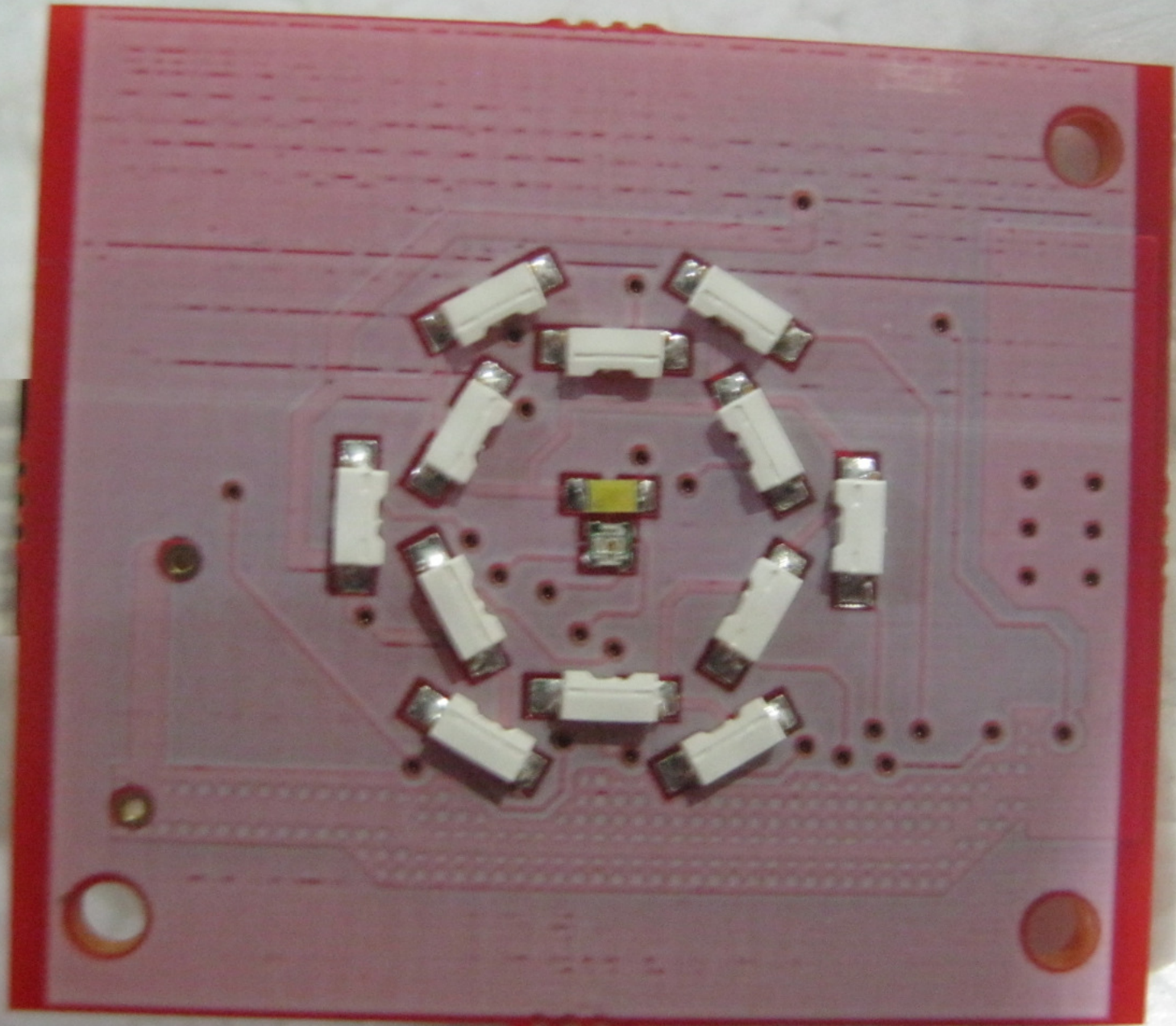


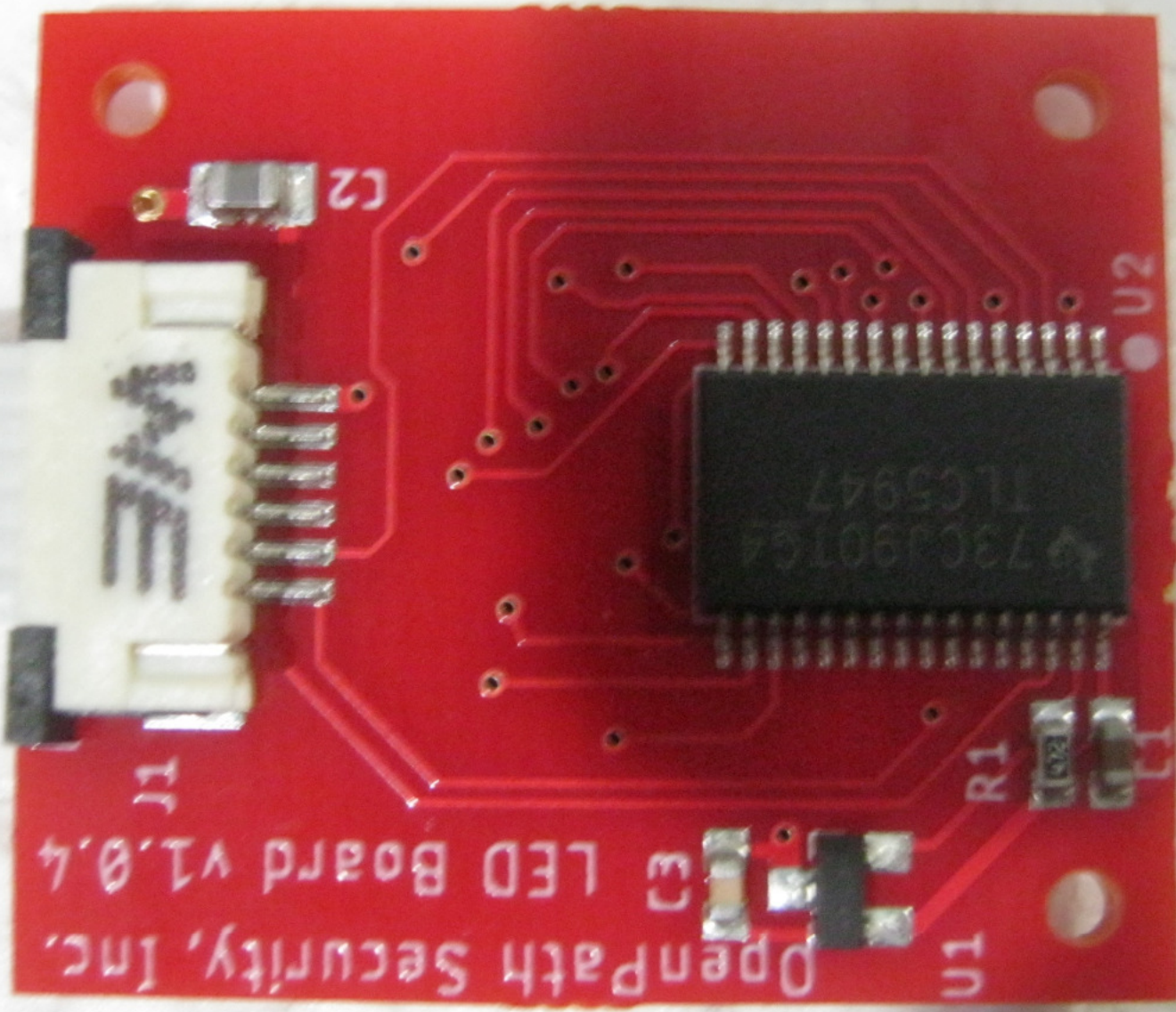
FUSOR V1.2.5

OpenPath Security, Inc.

GND-TP

TP4





OpenPath Security, Inc.
LED Board v1.0.4

73C1901G4
TLC5947

J1

C2

U1

R1

U2