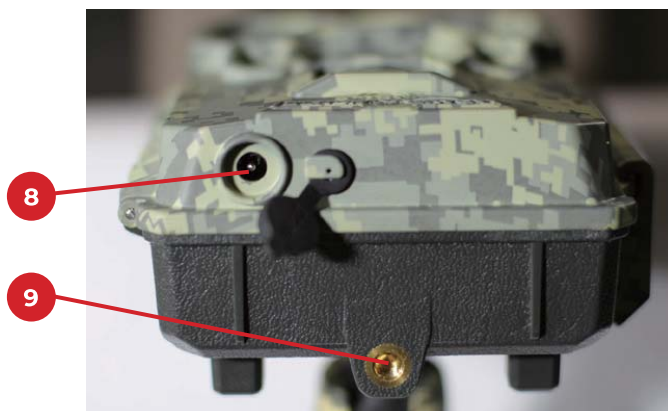
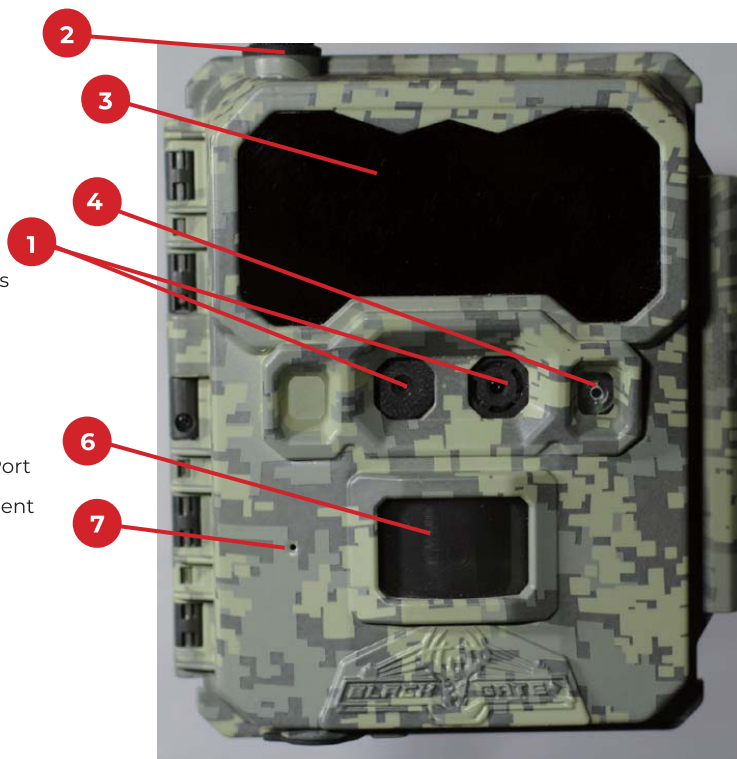


INSTRUCTION **MANUAL**

BLACKGATEHUNTING.COM

INTRODUCTION R4G

- 1 Lens/Sensors
- 2 Antenna
- 3 IR LEDs (940NM)
- 4 Camera Working Status Indicator
- 5 Power Switch
- 6 PIR Motion Sensor
- 7 Microphone
- 8 External Battery In/DC Port
- 9 Tripod/Mount Attachment 1/4" x 20



QUICK START GUIDE

WHAT IS IN THE BOX?

- (1) TRAIL CAMERA
- (1) INSTRUCTION MANUAL
- (1) MOUNTING STRAP
- (1) ANTENNA
- (1) PRE-INSTALLED SIM CARD
(DO NOT REMOVE)

WHAT YOU WILL NEED

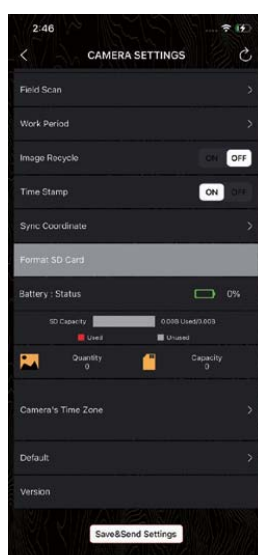
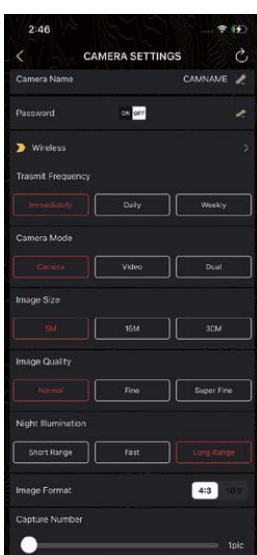
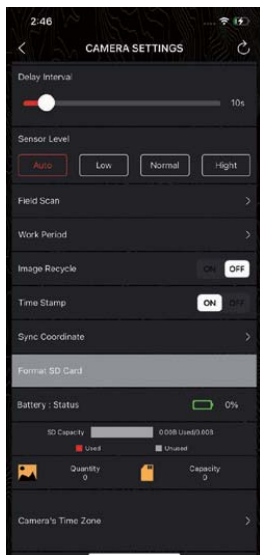
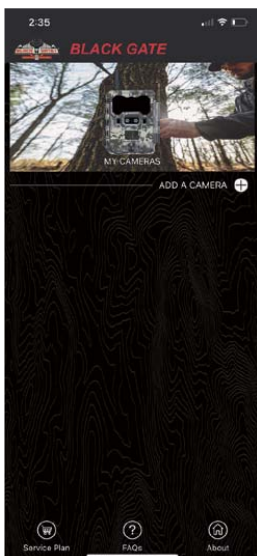
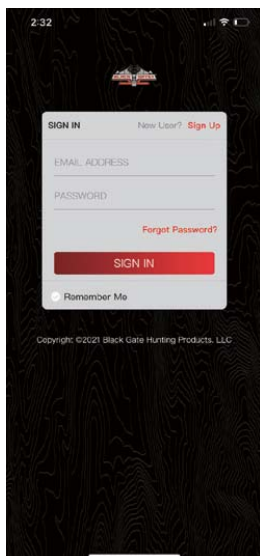
12 AA LITHIUM BATTERIES
SD CARD - CLASS 10, U3, 16GB-64GB



BLACK GATE APP DOWNLOAD



Black Gate



QUICK SET UP

SETTING UP THE CAMERA

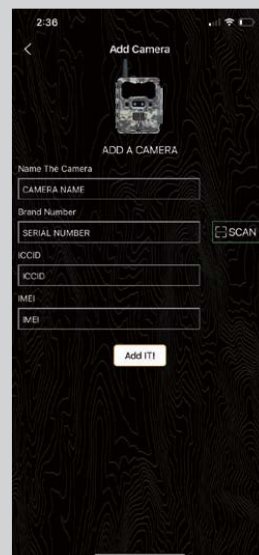
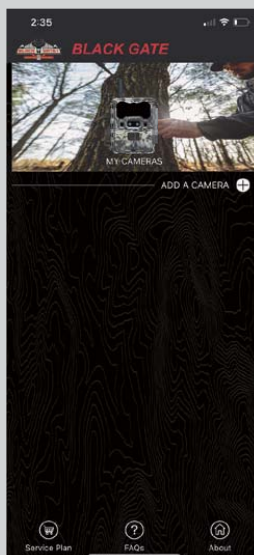
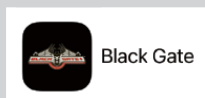
1. Install camera's antenna.
 - Tighten securely to prevent internal moisture/condensation inside the lens.
2. Install a Class 10 U3 SD card
 - Recommended brands are: Black Gate, SanDisk and Lexar
3. Install 12 AA Lithium batteries.
 - To install the batteries, open the camera. Install the batteries in the correct orientation on the right side of the camera.
4. DO NOT REMOVE the SIM Card that is Pre-installed in the R4G
5. Turn the power switch to "ON"
 - Press menu
 - Right arrow to "4G" display.
 - Press down arrow to "wireless"
 - Press "OK"
 - Use up and down arrows to toggle between on and off.

DOWNLOADING THE APP

In your Apple or Google Play Store, download the Black Gate app and sign in using an email and password you created.

If you already have a Black Gate account with ACTIVE cameras, you can simply login to your app and add your camera following the instructions below. Once you have created your account, and set up your data plan, it is time to activate your camera in the app:

1. Click the Add a Camera (+) icon in the upper right of the screen
2. Name the camera
3. Enter Serial Number
4. Using your phone, scan the QR code located in the menu settings of your R4G or you can enter the ICCID number and IMEI number manually
5. Camera activation can take a couple minutes.



SETTINGS / SPECIFICATIONS

Camera Mode	Camera, Video, Dual (Camera + Video)
Day/Night Mode	Daytime: Color, Nighttime: B+W
IR Range	80+ Feet
PIR Angle	52 degrees
Flash	940 NM No-Glow
SD Card	Class 10, U3, 16GB - 64GB, minimum 90 MB/Sec
Picture Format	JPEG
Multishot	Optional 1-9 Photo
Video	Optional 1080 HD Video
Trigger Speed	<.4 seconds
SD Card Recycle	Default
Battery	12xAA Lithium Ultimate Optional external power source (12V external battery pack or solar panel) Recommended 3000mAh Barrel plug reducer size 5.5x2.1mm
External DC	12V
Transfer Picture via 4G	High, detailed thumbnail images sent to Black Gate App (additional data charges may apply)
Request HD Photo via 4G	Only in supported locations (Additional data charges may apply)
Upload Frequency/ Send Type	Instantly (Timely) / 12 Hours / 24 Hours
4G Communication	LTE wireless
4G Antenna	1 Antenna Module
Device Serial No.	Yes
Interface	LTE and SD Card
Mounting	Strap; Tripod (1/4" x 20 threaded insert) - two locations
Operating Temperature	-5F to 125F
Operation Humidity	5% - 95%
Waterproof rating	IP67
Dimensions	4.5" x 2.5" x 5.5"
Weight	1.6 lbs (without batteries)
Certification	FCC RoHS

PRODUCT CARE

INTERNAL CONDENSATION ON LENS

The R4G is IP67 rated waterproof. The camera housing is water resistant against rain and storm elements. The only way the R4G can get condensation in or behind the lens is if the antenna is not screwed in all the way, the DC plug is not installed or if there is dirt or debris on the seal. Follow instructions to alleviate this issue if need be:

- Pull the SD card out and let the camera sit for 3-4 days open, in an area where there is circulating air (fan or vent).
- Or place in a sealed container with rice for 24 hours to draw out the moisture.
- Clean the seal well with soap and water and tighten your antenna.
- Place back out in the field.

IF THE CAMERA HAS ACCIDENTALLY BEEN SUBMERGED IN WATER

1. Do not open the camera right away.
2. Dry the outer housing of the camera, preventing water from entering the inside of the camera and causing internal damage.





LIMITED WARRANTY

**CHECK OUT WARRANTY
INFORMATION ON OUR WEBSITE
WWW.BLACKGATEHUNTING.COM**

FCC REGULATIONS

FEDERAL COMMUNICATIONS COMMISSION - PART 15

This equipment has been tested and found to comply with the limits for a Class B digital device, pursuant to Part 15 of the Federal Communications Commission rules. These limits are designed to provide reasonable protection against harmful interference in a residential installation. This equipment generates, uses and can radiate radio frequency energy and, if not installed and used in accordance with the instructions, may cause harmful interference to radio communications. However, there is no guarantee that interference will not occur in a particular installation. If this equipment does cause harmful interference to radio or television reception, which can be determined by turning the equipment off and on, the user is encouraged to try to correct the interference by one or more of the following measures:

- Reorient or relocate the receiving antenna.
- Increase the separation between the equipment and receiver.
- Connect the equipment into an outlet on a circuit different from that to which the receiver is connected.
- Consult the dealer or an experienced radio/TV technician for help.

Changes or modifications to this equipment not expressly approved by the party responsible for compliance could void the user's authority to operate the equipment. This device complies with Part 15 of the FCC rules. Operation is subject to the following two conditions: (1) this device may not cause harmful interference, and (2) this device must accept any interference received, including interference that may cause undesired operation.

FCC RADIATION EXPOSURE STATEMENT:

This equipment complies with FCC radiation exposure limits set forth for an uncontrolled environment. This equipment should be installed and operated with minimum distance 20cm. between the radiator and your body.

Contains FCC ID: 2APJQ-R4G 



RETURN

DO NOT RETURN THIS PRODUCT TO YOUR RETAILER

PLEASE CALL
937-900-7195

OR EMAIL
CONTACT@BLACKGATEHUNTING.COM

For any warranty issues or questions

1053 PURCELL RD.
PEEBLES, OHIO 45660

Caution:

This device complies with Part 15 of the FCC rules and Industry Canada license-exempt RSS standard(s). Operation is subject to the following two conditions: (1) this device may not cause harmful interference, and (2) this device must accept any interference received, including interference that may cause undesired operation.

The manufacturer is not responsible for any radio or TV interference caused by unauthorized modifications or change to this equipment. Such modifications or change could void the user's authority to operate the equipment.

This radio transmitter (identify the device by certification number or model number if Category II) has been approved by Industry Canada to operate with the antenna types listed below with the maximum permissible gain indicated. Antenna types not included in this list, having a gain greater than the maximum gain indicated for that type, are strictly prohibited for use with this device.

This equipment has been tested and found to comply with the limits for a Class B digital device, pursuant to part 15 of the FCC Rules. These limits are designed to provide reasonable protection against harmful interference in a residential installation. This equipment generates, uses and can radiate radio frequency energy and, if not installed and used in accordance with the instructions, may cause harmful interference to radio communications. However, there is no guarantee that interference will not occur in a particular installation. If this equipment does cause harmful interference to radio or television reception, which can be determined by turning the equipment off and on, the user is encouraged to try to correct the interference by one or more of the following measures:

- Reorient or relocate the receiving antenna.
- Increase the separation between the equipment and receiver.
- Connect the equipment into an outlet on a circuit different from that to which the receiver is connected.
- Consult the dealer or an experienced radio/TV technician for help.

The device has been evaluated to meet general RF exposure requirement.

To maintain compliance with FCC's RF exposure guidelines, this equipment should be installed and operated with a minimum distance of 20cm between the radiator and your body.