

# SRT838iPro 5G Indoor CPE Quick Start Guide

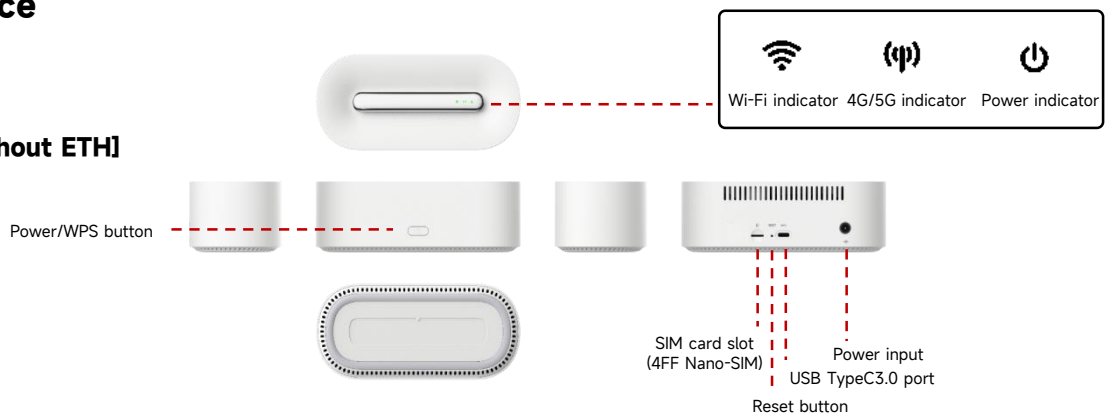
Part Number:  
Issue: 01

## 1 Packing List

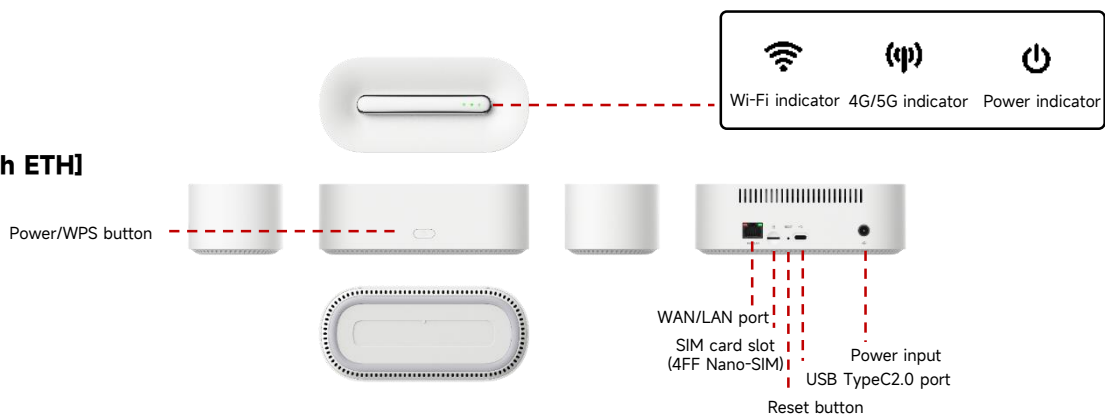
Item	Description	Qty.	Item	Description	Qty.
	5G Indoor CPE SRT838iPro-SA	1		Quick Start Guide	1
	Power Adapter (12V)	1		Certificate of Conformity	1
	Cat5e Ethernet Cable (1.2m)	1			

## 2 Appearance

### Option A:[Without ETH]



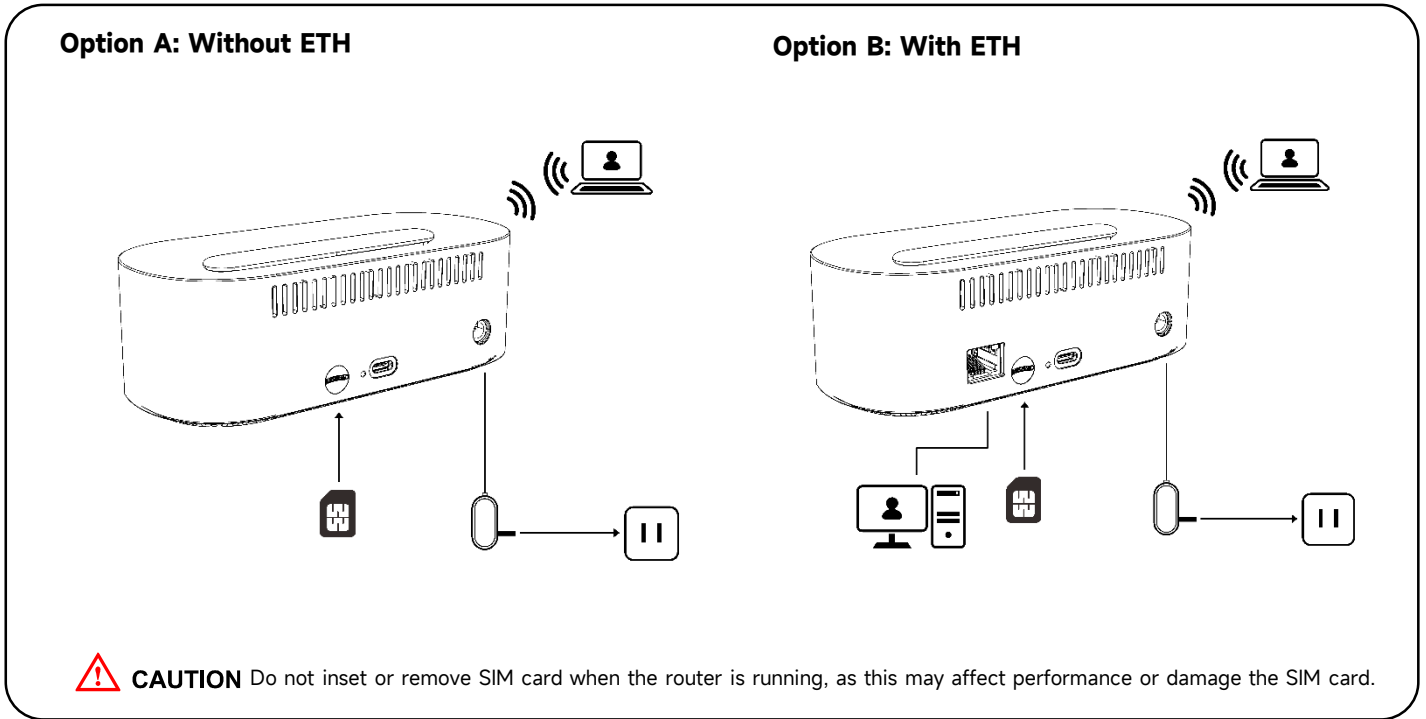
### Option B:[With ETH]



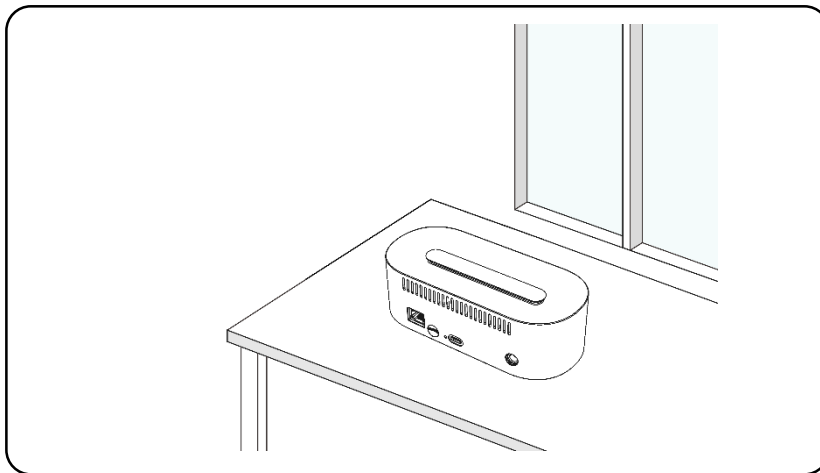
Item	Description
Wi-Fi Indicator	For the details of Indicator status, go to next chapter.
4G/5G Indicator	
Power Indicator	
Power/WPS Button	<ul style="list-style-type: none"> <li>Press for 0.2-1s to enable WPS.</li> <li>Press for more than 3s to power off the device.</li> <li>Press for more than 10s to reboot the device.</li> </ul>
SIM Card Slot	4FF, nano-SIM card
Reset Button	Press for more than 3s to restore the device to factory configuration.
USB Port	<ul style="list-style-type: none"> <li>[Without ETH]: USB typeC 3.0 (USB OTG)</li> <li>[With ETH]: USB typeC 2.0 (Only for debug)</li> </ul>
Power Input	AC: 100V~240V, 50Hz/60Hz DC: 12V/1.5A
WAN/LAN Port	[With ETH]: WAN/LAN GE LAN port, supporting 10/100/1000Mbit/s

### 3 Installation

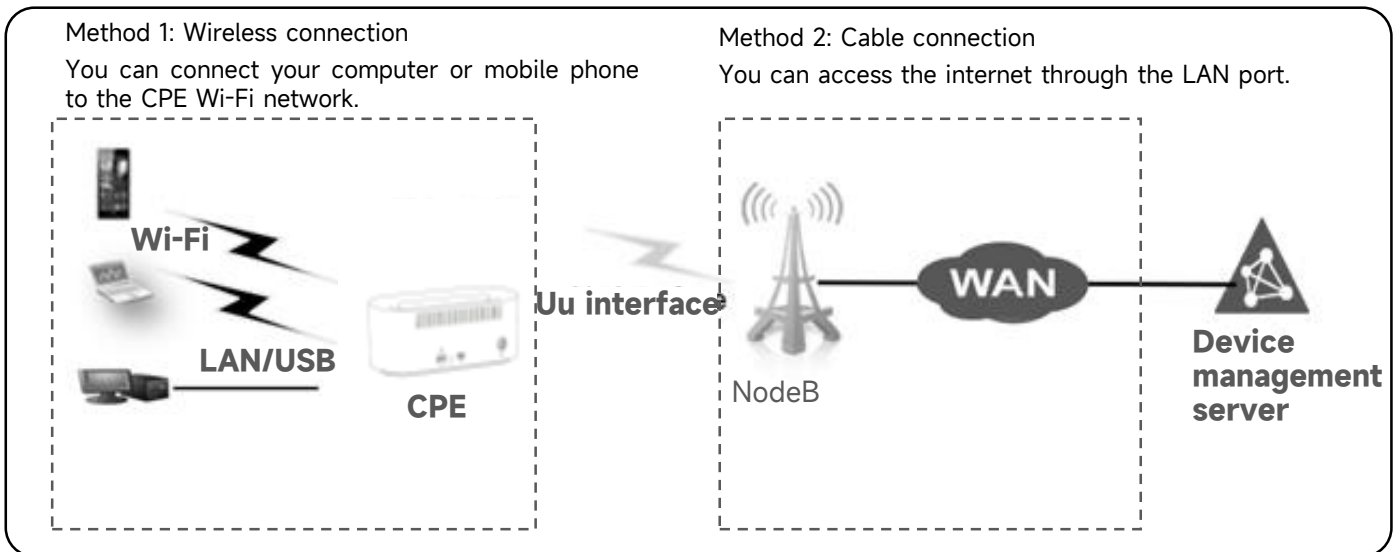
#### 1. Insert a standard SIM card.



#### 2. Place the CPE on a stationary working table.



#### 3. Connect cables and power on the device.



- CAUTION**
- When the power adapter is inserted, the CPE will automatically power on.
  - It's strongly suggested to change the default SSID and password by accessing to the WebUI Wi-Fi management page to prevent unauthorized access to your Wi-Fi network.
  - You need to reconnect to the CPE Wi-Fi network after changing the Wi-Fi password.

For the CPE indicator status, see the following table:

Indicator	LED Behavior	Status
Power	Green Steady	CPE powered on.
	Blue Blinking	Ongoing upgrade, or Restoring factory settings.
	Red Steady	The device is faulty, or SIM card is abnormal.
	Off	CPE powered off.
Wi-Fi	Blue Steady	Wi-Fi is on.
	Blue Blinking	Once per second: Ongoing upgrade.
		Five times every eight seconds: WPS is activating.
Off	Wi-Fi is off.	
4G/5G	Blue Steady	Registered to 5G/4G network with strong signal.
	Blue Blinking	Once per second: Ongoing upgrade, or Restoring factory settings.
	Green Steady	Registered to 5G/4G network with good signal.
	Yellow Steady	Registered to 5G/4G network with weak signal.
	Red Blinking	No signals are available, or the device is searching for signals.
	Off	Power off.

## 4 Frequency Band and Output Power

Item	Frequency	Transmit Power	Wi-Fi
SRT838iPro-SA	<ul style="list-style-type: none"> <li>5G NR: FDD: N2/N5/N7/N8/N25/N26/N28/N66 TDD: N38/N41/N77/N78</li> <li>4G LTE: FDD: B2/B4/B5/B7/B8/B25/B26/B28/B66 TDD: B38/B41/B42/B43</li> </ul>	<ul style="list-style-type: none"> <li>5G NR: N78: 27.5dBm N77: 25.5dBm N2/N5/N7/N8/N25/N26/N28/N38/N41/N66/N77: 25dBm</li> <li>4G LTE: B2/B4/B5/B7/B8/B25/B26/B28/B38/B41/B42/B43/B66: 24.5dBm</li> </ul>	<ul style="list-style-type: none"> <li>2.4GHz: 2400MHz~2483.5MHz: 23dBm</li> <li>5GHz: 5150MHz~5350MHz: 20dBm 5470MHz~5850MHz: 20dBm</li> </ul>

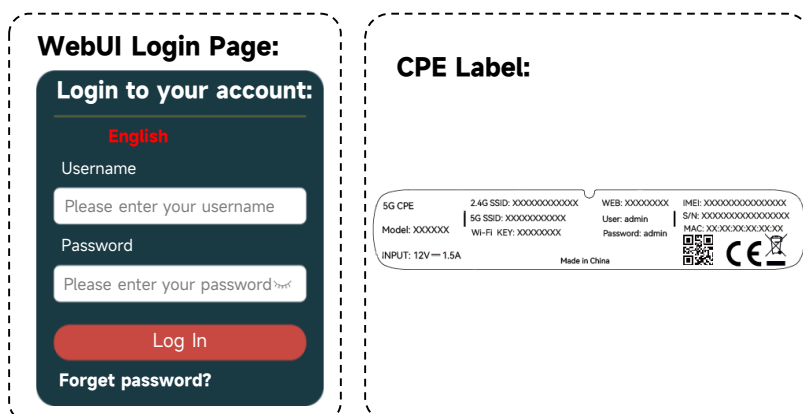
## 5 Configuration

You can access the WebUI and configure the device.

You can refer to the CPE label on the backside of the CPE for the default IP address and password.

### CAUTION

- It is strongly recommended that you change the default login password of the WebUI to prevent unauthorized users from changing the settings.



## 6 Safety Information

Before using and operating this device, read the following precautions carefully to ensure optimal device performance and avoid dangers or violation of laws and regulations.

### Wireless Devices

Do not use this device in areas where the use of wireless devices is prohibited as it may interfere with other devices or present other hazards.

### Impact on Medical Equipment

Radio waves generated by the device may interfere with the operation of implanted medical appliances or personal medical appliances, such as the pacemakers, cochlear implants, and hearing aids. If such appliances are used, consult the appliance manufacturer about the restrictions for using the device.

### Areas with Inflammables and Explosives

- Do not use the device where inflammables or explosives are stored, for example, in a gas station, oil depot, or chemical plant. Otherwise, explosions or fires may occur. In addition, follow the instructions indicated in text or symbols.
- Do not store or transport the device in containers with flammable liquids, gases, or explosives.

### Children Safety

Keep the device, its accessories, and plastic bags out of the reach of children. Otherwise, they may damage the device and its accessories by mistake, or they may swallow the small components of the device or put their heads into the plastic bags, causing suffocation or other dangerous situations.

### Accessory Requirements

NOTE: The accessories of the device include the power adapter, cables, and mounting kits.

Use only the accessories supplied by the device manufacturer. Otherwise, the device may be faulty, fail, or even cause fires. Violating the warranty for the device or the laws and regulations related to telecommunications terminals may cause injuries.

### Operating Environment

- Use the CPE at an ambient temperature of 0°C to 45°C. An overly high or low ambient temperature may cause device faults.
- Use the CPE at an ambient humidity of 5%RH to 95%RH (non-condensing). An overly high or low ambient humidity may cause device faults.
- The power supply voltage must meet the requirements for the input voltage of the device.
- Keep the device away from electronic appliances that generate strong magnetic or electric fields, such as a transformer, microwave oven, or refrigerator.
- When using the device indoors, avoid dusty, damp, or dirty environments. Using the device in these environments may result in circuit malfunctions.
- Keep the device stable to avoid personal injury or device damage.
- Keep the device away from heat sources, flammable materials, or exposed fire sources.
- Do not install the device in areas exposed to acidic, alkaline, or other corrosive gases.
- Keep the device and accessories in a well-ventilated area. Do not enclose or cover your device with towels or other objects. Do not place the device in a container with poor heat dissipation, such as a box or bag. Poor heat dissipation may damage the device.
- During thunderstorms, power off your device and remove all cables connected to it to protect against device faults or lightning strikes.
- Do not place any object (such as a candle or a water container) on the device to avoid risks caused by liquid leakage. If any foreign object or liquid enters the device, stop using the device immediately, power it off, remove all the connected cables, and then contact your operator.
- In the use of the device, do not touch the cable connectors.
- The device temperature increases after the device runs for a while. If the device is overheated, avoid contacting it for an extended period. Otherwise, low temperature burn symptoms, such as red spots and darker pigmentation, may occur.
- Do not scratch or damage the device shell. Flaking or peeling of the paint may lead to skin allergy or malfunction of the device. If paint flakes and peels drop into the host, a short circuit may occur.

### Cleaning and Maintenance

- During storage, transportation, and operation of the device, keep it dry and prevent it from colliding with other objects.
- If the device is not going to be used for an extended period of time, power it off and remove all cables connected to it.
- Keep the power plug clean and dry to prevent electric shocks or other dangers.

- If any exception occurs, for example, if the device emits any smoke or unusual sound or smell, stop using the device immediately, power it off, remove all the cables connected to it, and then contact your operator.
- Do not trample, pull, or overbend any cable. Otherwise, the cable may get damaged, causing malfunction of the device.
- Do not use damaged or aged cables. Using such cables may lead to electric shocks or fire.
- Before cleaning or maintaining the device, stop using it, power it off, and then remove all cables connected to it.
- Do not place magnetic stripe cards, such as credit cards and phone cards, or floppy disks, near the device for extended periods of time. Otherwise, the magnetic stripe cards may be damaged or the stored data in the floppy disks may be lost.
- Use a clean, soft, and dry cloth to clean the device shell. Do not use any chemical detergent, powder, or other chemical agents to clean the device.
- Without authorization, no organization or individual can change the mechanical, safety, or performance design of the device.
- When using the CPE, observe all applicable laws and regulations and respect the legal rights of other people.

### Environmental Protection

- Do not dispose of the device and its accessories in a garbage can.
- Dispose of the device according to the local regulations on disposing of packing materials and abandoned devices. Support proper collection and recycling.

### RoHS for Environmental Protection

This device complies with the RoHS Directive 2011/65/EU and other RoHS directives in other countries.

### FCC Regulations

FCC ID: 2APJ4-SRT838IPRO

This device complies with part 15 of the FCC Rules.

Operation is subject to the following two conditions:

- (1) This device may not cause harmful interference.
- (2) This device must accept any interference received, including interference that may cause undesired operation.

Changes or modifications not expressly approved by the manufacturer responsible for compliance could void the user's authority to operate the equipment.

This equipment has been tested and found to comply with the limits of a Class B digital device, pursuant to Part 15 of the FCC Rules. These limits are designed to provide reasonable protection against harmful interference in a residential installation. This equipment generates, uses and can radiate radio frequency energy and, if not installed and used in accordance with the instructions, may cause harmful interference to radio communications. However, there is no guarantee that interference will not occur in a particular installation; if this equipment does cause harmful interference to radio or television reception, which can be determined by turning the equipment off and on, the user is encouraged to try to correct the interference by one or more of the following measures:

- Reorient/relocate the receiving antenna.
- Increase the separation between the equipment and receiver.
- Connect the equipment into an outlet on a circuit different from that to which the receiver is connected.
- Consult the dealer or an experienced radio/TV technician for help.

### RF Exposure Information

This device meets the government's requirements for exposure to radio waves. This device is designed and manufactured not to exceed the emission limits for exposure to radio frequency (RF) energy set by the Federal Communications Commission of the U.S. Government.

This device complies with FCC radiation exposure limits set forth for an uncontrolled environment. In order to avoid the possibility of exceeding the FCC radio frequency exposure limits, human proximity to the antenna shall not be less than 20 cm during normal operation.

### Caution:

Changes or modifications not expressly approved by the party responsible for compliance could void the user's authority to operate the equipment.