

## System Performance Check-D2450V2-727

Frequency: 2450 MHz; Duty Cycle: 1:1; Room Ambient Temperature: 23.8°C; Liquid Temperature: 22.3°C  
Medium parameters used:  $f = 2450$  MHz;  $\sigma = 1.88$  S/m;  $\epsilon_r = 39.488$ ;  $\rho = 1000$  kg/m<sup>3</sup>

DASY5 Configuration:

- Area Scan Setting: Find Secondary Maximum Within: 2.0 dB and with a peak SAR value greater than 0.0012W/kg
- Electronics: DAE4 Sn1260; Calibrated: 2021/9/20
- Probe: EX3DV4 - SN3665; ConvF(7.28, 7.28, 7.28) @ 2450 MHz; Calibrated: 2021/8/25
- Sensor-Surface: 1.4mm (Mechanical Surface Detection)
- Phantom: ELI

**Head/Pin=250mW/Area Scan (81x81x1):** Interpolated grid: dx=1.200 mm, dy=1.200 mm  
Maximum value of SAR (interpolated) = 20.8 W/kg

**Head/Pin=250mW/Zoom Scan (7x7x7)/Cube 0:** Measurement grid: dx=5mm, dy=5mm, dz=5mm

Reference Value = 107.3 V/m; Power Drift = -0.06 dB

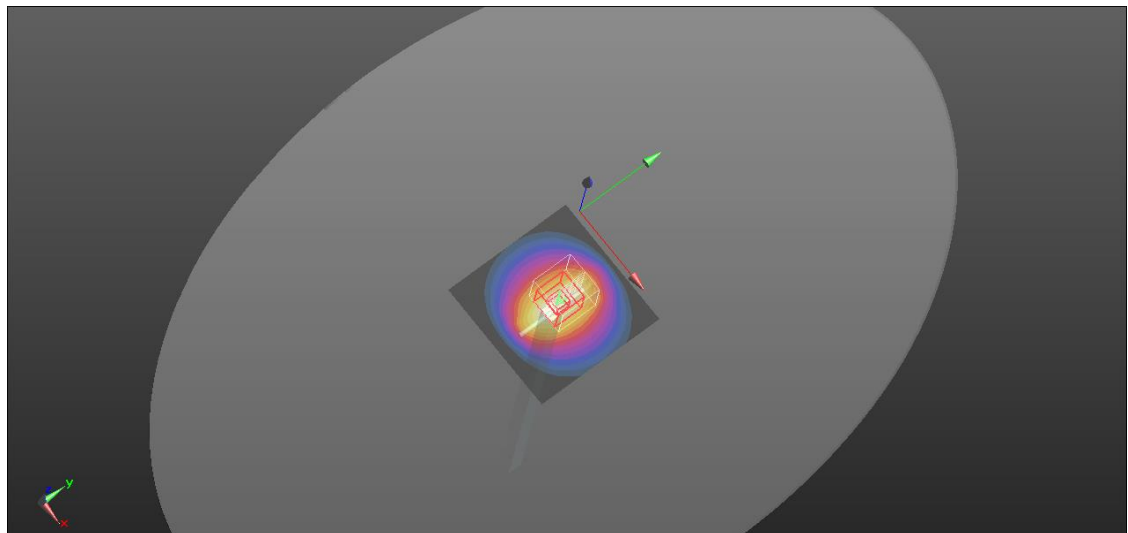
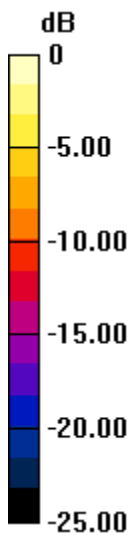
Peak SAR (extrapolated) = 26.8 W/kg

**SAR(1 g) = 12.6 W/kg; SAR(10 g) = 6.06 W/kg**

Smallest distance from peaks to all points 3 dB below = 10 mm

Ratio of SAR at M2 to SAR at M1 = 46.6%

Maximum value of SAR (measured) = 21.2 W/kg



0 dB = 21.2 W/kg = 13.26 dBW/kg

## System Performance Check-D5GHzV2-1040-5200

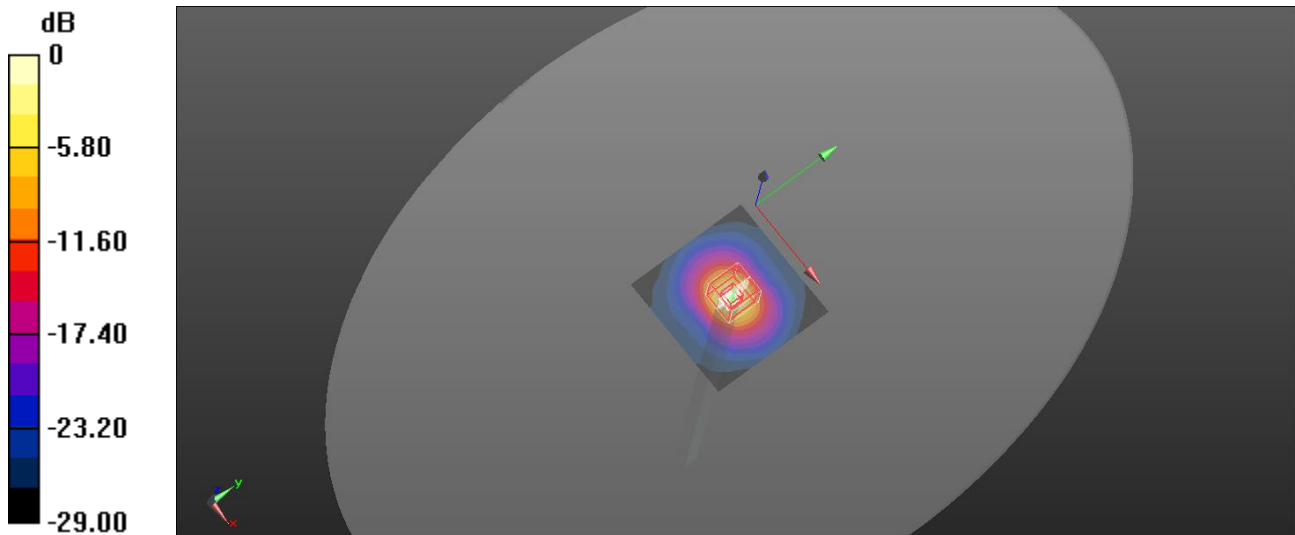
Frequency: 5200 MHz; Duty Cycle: 1:1; Room Ambient Temperature: 23.5°C; Liquid Temperature: 22.7°C  
Medium parameters used:  $f = 5200$  MHz;  $\sigma = 4.615$  S/m;  $\epsilon_r = 34.862$ ;  $\rho = 1000$  kg/m<sup>3</sup>

DASY5 Configuration:

- Area Scan Setting: Find Secondary Maximum Within: 2.0 dB and with a peak SAR value greater than 0.0012W/kg
- Electronics: DAE4 Sn1260; Calibrated: 2021/9/20
- Probe: EX3DV4 - SN3665; ConvF(5.4, 5.4, 5.4) @ 5200 MHz; Calibrated: 2021/8/25
- Sensor-Surface: 2mm (Mechanical Surface Detection)
- Phantom: ELI

**Head/Pin=100mW/Area Scan (91x91x1):** Interpolated grid: dx=1.000 mm, dy=1.000 mm  
Maximum value of SAR (interpolated) = 16.4 W/kg

**Head/Pin=100mW/Zoom Scan (7x7x12)/Cube 0:** Measurement grid: dx=4mm, dy=4mm, dz=2mm  
Reference Value = 61.14 V/m; Power Drift = -0.03 dB  
Peak SAR (extrapolated) = 29.0 W/kg  
**SAR(1 g) = 7.41 W/kg; SAR(10 g) = 2.14 W/kg**  
Smallest distance from peaks to all points 3 dB below = 7.4 mm  
Ratio of SAR at M2 to SAR at M1 = 56%  
Maximum value of SAR (measured) = 15.3 W/kg



0 dB = 15.3 W/kg = 11.85 dBW/kg