

Report No.: I21W00031-WWAN_Rev3

5.9.1 GSM 850 Measurement result

GPRS GMSK Mode

Frequency [MHz]	Generator output power(P_g) [dBm]	Cable loss [dB]	Antenna Gain [dB]	ERP [dBm]	Antenna Polarization [H/V]
824.2	30.6	3.4	8.0	35.2	V
836.6	32.1	3.4	6.6	35.3	V
848.8	31.3	3.4	7.2	35.1	V

5.9.2 PCS 1900 Measurement result

GPRS GMSK Mode

Frequency [MHz]	Generator output power(P_g) [dBm]	Cable loss [dB]	Antenna Gain [dB]	EIRP [dBm]	Antenna Polarization [H/V]
1850.2	26.3	5.0	7.2	28.5	V
1880.0	25.9	5.0	7.2	28.1	V
1909.8	26.6	5.1	6.8	28.3	V

5.9.3 LTE Band 2 Measurement result

LTE Band 2_20 MHz_QPSK

Frequency [MHz]	Generator output power(P_g) [dBm]	Cable loss [dB]	Antenna Gain [dB]	EIRP [dBm]	Antenna Polarization [H/V]
1850.0	22.1	5.0	7.2	24.3	V
1880.0	22.2	5.0	7.2	24.4	V
1910.0	22.4	5.1	6.8	24.1	V

LTE Band 2_20 MHz_16QAM

Chongqing Academy of Information and Communication Technology

Address: No. 8, Yuma Road, Chayuan New City, Nan'an District, Chongqing, P. R. China, 401336
 Tel: 0086-23-88069965 FAX: 0086-23-88608777

Report No.: I21W00031-WWAN Rev3

Frequency [MHz]	Generator output power(P _g) [dBm]	Cable loss [dB]	Antenna Gain [dB]	EIRP [dBm]	Antenna Polarization [H/V]
1850.0	21.4	5.0	7.2	23.6	V
1880.0	21.4	5.0	7.2	23.6	V
1910.0	21.6	5.1	6.8	23.3	V

5.9.4 LTE Band 4 Measurement result

LTE Band 4_20MHz_QPSK

Frequency [MHz]	Generator output power(P _g) [dBm]	Cable loss [dB]	Antenna Gain [dB]	EIRP [dBm]	Antenna Polarization [H/V]
1720.0	21.6	4.8	7.9	24.7	V
1732.5	21.7	4.9	8.1	24.9	V
1745.0	21.7	4.9	8.1	24.9	V

LTE Band 4_20MHz_16QAM

Frequency [MHz]	Generator output power(P _g) [dBm]	Cable loss [dB]	Antenna Gain [dB]	EIRP [dBm]	Antenna Polarization [H/V]
1720.0	21.4	4.8	7.9	24.5	V
1732.5	20.9	4.9	8.1	24.1	V
1745.0	21.1	4.9	8.1	24.3	V

5.9.5 LTE Band 5 Measurement result

LTE Band 5_10MHz_QPSK

Frequency [MHz]	Generator output power(P _g) [dBm]	Cable loss [dB]	Antenna Gain [dB]	ERP [dBm]	Antenna Polarization [H/V]
829.0	23.3	3.4	7.3	27.2	V

Chongqing Academy of Information and Communication Technology

Address: No. 8, Yuma Road, Chayuan New City, Nan'an District, Chongqing, P. R. China, 401336
Tel: 0086-23-88069965 FAX: 0086-23-88608777

Report No.: I21W00031-WWAN Rev3

836.4	24.1	3.4	6.6	27.3	V
844.0	23.2	3.4	6.6	26.4	V

LTE Band 5_10MHz_16QAM

Frequency [MHz]	Generator output power(P _g) [dBm]	Cable loss [dB]	Antenna Gain [dB]	ERP [dBm]	Antenna Polarization [H/V]
829.0	22.8	3.4	7.3	26.7	V
836.4	23.3	3.4	6.6	26.5	V
844.0	22.7	3.4	6.6	25.9	V

5.9.6 LTE Band 7 Measurement result

LTE Band 7_20MHz_QPSK

Frequency [MHz]	Generator output power(P _g) [dBm]	Cable loss [dB]	Antenna Gain [dB]	EIRP [dBm]	Antenna Polarization [H/V]
2510.0	23.5	3.1	9.1	29.5	V
2535.0	24.3	3.1	9.1	30.3	V
2560.0	23.7	3.2	8.8	29.3	V

LTE Band 7_20MHz_16QAM

Frequency [MHz]	Generator output power(P _g) [dBm]	Cable loss [dB]	Antenna Gain [dB]	EIRP [dBm]	Antenna Polarization [H/V]
2510.0	22.9	3.1	9.1	28.9	V
2535.0	24.4	3.1	9.1	30.4	V
2560.0	23.5	3.2	8.8	29.1	V

Annex A EUT Photos

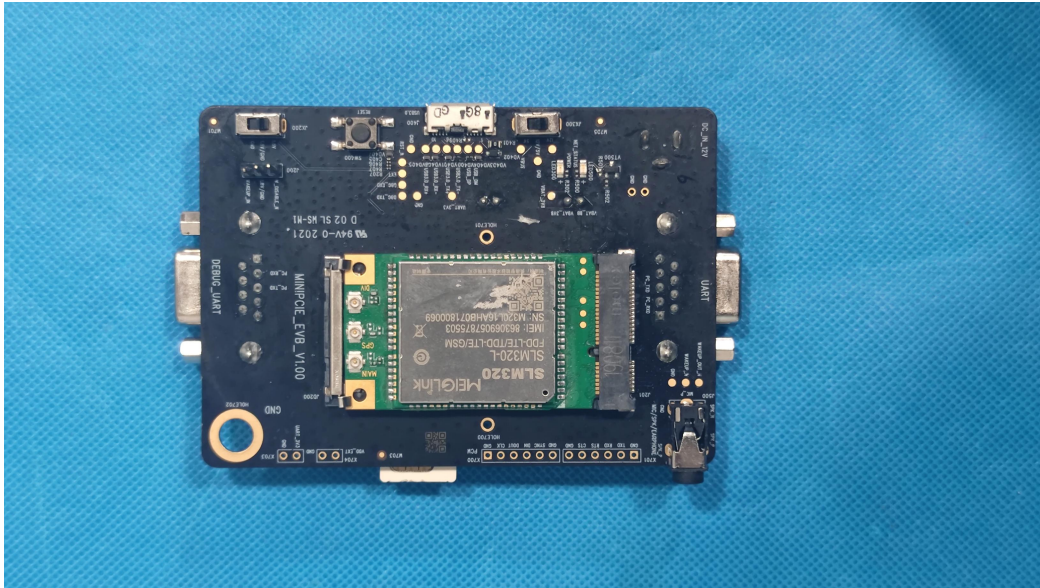


Photo (front)

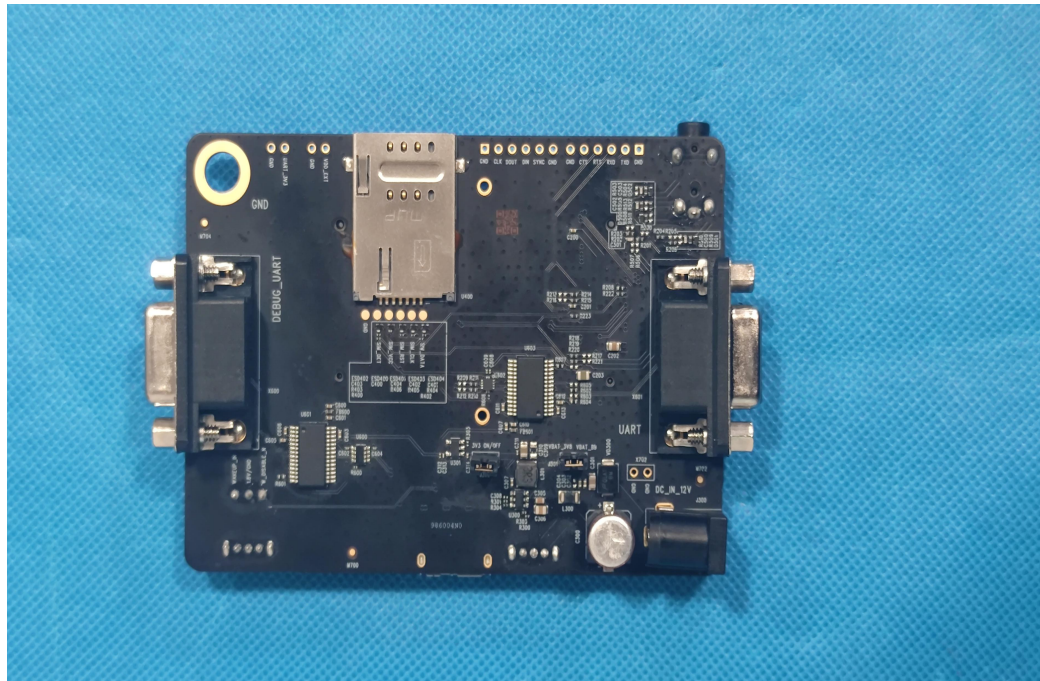


Photo (back)



Report No.: I21W00031-WWAN_Rev3

ANNEX B Deviations from Prescribed Test Methods

No deviation from Prescribed Test Methods.

*****End Of Report*****

Chongqing Academy of Information and Communication Technology

Address: No. 8, Yuma Road, Chayuan New City, Nan'an District, Chongqing, P. R. China, 401336
Tel: 0086-23-88069965 FAX: 0086-23-88608777