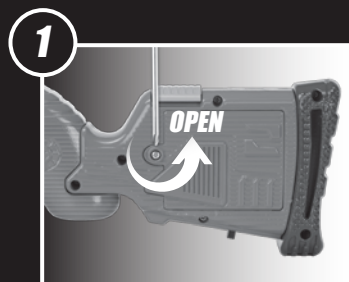


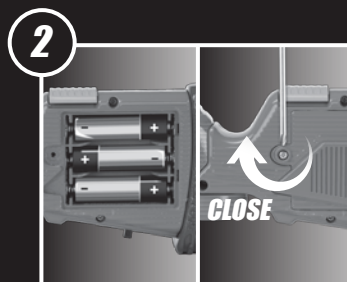
# AIR WARRIORS® COVERT SQUAD™

## BUILT IN WALKIE-TALKIES

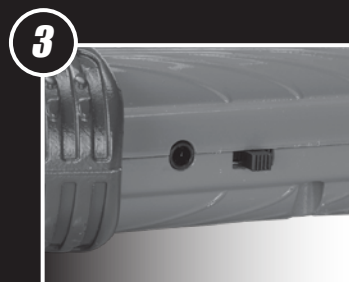
### BATTERY AND WALKIE-TALKIE INSTRUCTIONS



Locate the battery box on the back of the blaster. Open the battery box using a Phillips-head screwdriver.



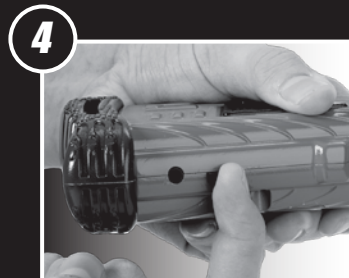
Insert 3 new AA/LR6, 1.5V alkaline batteries and close the battery door.



Locate the walkie-talkie power/channel switch on the bottom of the blaster. When the switch is at the middle, the walkie-talkie is off.

### THE WALKIE-TALKIE HAS TWO COMMUNICATION CHANNELS

Both walkie-talkies must be on the same channel in order to communicate with each other.



**TO USE CHANNEL A (RED LIGHT):**  
Slide the switch backward. The light on top of the blaster will turn red.



**TO USE CHANNEL B (GREEN LIGHT):**  
Slide the switch forward. The light on top of the blaster will turn green.



**TO TURN OFF:**  
Slide the switch to the middle.

### EARBUDS AND SPEAKER: UP TO 300 FT RANGE



To use the earbuds, connect the jack into the blaster next to the walkie-talkie power/channel switch.



To talk, press and hold the button on top of the blaster and speak into the microphone. When you are finished talking, release the button.

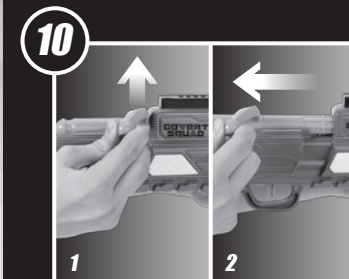


Be sure to turn the walkie-talkie off, by sliding the switch to the middle when not in use.

For maximum clarity, hold the button for at least half a second before talking. Make sure your mouth is two to three inches away from the microphone on the blaster. Do not cover microphone while talking.

# BLASTS UP TO 100 FEET

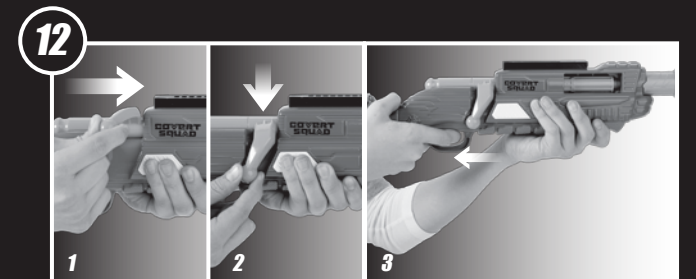
### BLASTER INSTRUCTIONS



**TO LOAD DARTS:**  
1) lift the bolt lever up  
2) pull it all the way back



Load a dart as shown.



**TO LOCK CHAMBER:**  
1) push the bolt lever forward  
2) then push down to lock  
3) Pull trigger to launch a dart.

Repeat the previous steps to launch another dart.

### CHECK OUT BUZZ BEE TOYS:



ASK A PARENT/GUARDIAN BEFORE GOING ONLINE.

QUESTIONS? COMMENTS?  
PLEASE CALL: 1-877-289-9233  
OR VISIT US AT: WWW.BUZZBEE TOYS.COM

RETAIN THE PACKAGING FOR FUTURE REFERENCE. COLORS AND CONTENTS MAY VARY FROM THOSE ILLUSTRATED. YOUTUBE AND YOUTUBE LOGOS ARE TRADEMARKS OF GOOGLE LLC. HK PATENT 1800631.8; 1700606.5 AND OTHER PATENTS PENDING. © 2018 BUZZ BEE TOYS, INC. ALL RIGHTS RESERVED. THE BUZZ BEE TOYS & AIR WARRIORS LOGOS ARE TRADEMARKS OF BUZZ BEE TOYS, INC., 309 FELLOWSHIP ROAD, SUITE 105, MT. LAUREL, NJ 08054.

COVERT SQUAD IS BATTERY OPERATED: EACH BLASTER REQUIRES 3 AA/LR6, 1.5V ALKALINE BATTERIES. BATTERIES NOT INCLUDED.

## WARNING!

1. Do not point blaster at people or animals.
2. Do not put any objects other than the foam darts provided into the blaster.
3. Do not attempt to modify the darts or blaster in any way.
4. Do not aim at eyes or face.
5. All the packaging material must be removed by an adult.
6. Unload the dart blaster when not in use.

## CAUTION:

1. Do not mix old and new batteries.
2. The supply terminals are not to be short-circuited.
3. Non-rechargeable batteries are not to be charged.
4. Always remove weak or used or dead batteries from the product.
5. Do not dispose of batteries in fire, batteries may explode or leak.
6. Rechargeable batteries are to be removed from the toy before being charged.
7. Rechargeable batteries are only to be charged under adult supervision.
8. Only batteries of the same or equivalent type as recommended are to be used.
9. Do not mix Alkaline, standard (carbon-zinc), or rechargeable (nickel-cadmium) batteries.
10. The toy must be fully assembled in accordance with the instructions before operating.
11. Be sure to insert the batteries correctly and always follow the toy and battery manufacturers' instructions.

## WARNING:

THIS PRODUCT MAY BE MISTAKEN FOR AN ACTUAL FIREARM BY LAW ENFORCEMENT OFFICERS AND OTHERS. ALTERING STATE OR FEDERAL REQUIRED MARKINGS OR COLORATION IN ORDER TO MAKE THE PRODUCT APPEAR MORE REALISTIC AND/OR BRANDISHING OR DISPLAYING THE PRODUCT IN PUBLIC IS DANGEROUS AND MAY BE A CRIME. DISPLAY, EXHIBIT, BRANDISHING IN A THREATENING MANNER AND POSSESSION, STORAGE OR KEEPING ON SCHOOL PROPERTY ARE PROHIBITED ACTIVITIES. THE CRIMINAL PENALTIES MAY BE IMPRISONMENT AND/OR FINES.

FRS/FCC PART 95 SUBPART B: RED LIGHT/CHANNEL A: 462.5625 MHz; GREEN LIGHT/CHANNEL B: 462.6625 MHz  
NOTE:- ALL CONTROLS, ADJUSTMENTS, SWITCHES AND EARPHONE USE THAT'S INSTRUCTED IN THE MANUAL/OPERATION INSTRUCTION PROVIDED BY THE MANUFACTURER, THAT MAY BE OPERATED OR ADJUSTED WITHOUT RESULTING IN VIOLATION OF FCC RULES.

WARNING:-ANY ADJUSTMENT THAT COULD RESULT IN A VIOLATION OF FCC RULES AND IT'S RECOMMENDED ISSUES, THAT COULD BE PERFORMED ONLY BY OR UNDER THE IMMEDIATE SUPERVISION AND RESPONSIBILITY OF A PERSON CERTIFIED AS TECHNICALLY QUALIFIED TO PERFORM TRANSMITTER MAINTENANCE AND REPAIR DUTIES IN THIS RADIO SERVICE BY AN ORGANIZATION OR COMMITTEE REPRESENTATIVE OF USER OF THAT SERVICE.

CAUTION:- CHANGE OR MODIFICATIONS I.E. REPLACING AND TRANSMITTER COMPONENT (CRYSTAL, SEMICONDUCTOR, ETC.) NOT EXPRESSLY APPROVED BY THE PARTY RESPONSIBLE FOR COMPLIANCE COULD VOID THE USER'S AUTHORITY TO OPERATE THE PRODUCT.

THIS EQUIPMENT COMPLIES WITH FCC RADIATION EXPOSURE LIMITS SET FORTH FOR AN UNCONTROLLED ENVIRONMENT.

FCC ID : 2APIW-62850-62851



BUZZ BEE TOYS (HK) CO., LIMITED  
UNITS 1206-08, TOWER B, NEW MANDARIN PLAZA,  
14 SCIENCE MUSEUM ROAD, TSIM SHA TSUI EAST,  
KOWLOON, HONG KONG.

ITEM NO. 62850  
MADE IN CHINA

