

Thanks for your trust and purchasing the JH-9105 wireless stereo bluetooth headphones. Our Design Team puts emphasis on both ergonomic design and user-experience as most important causes, concentrate on replaying the Hi-Fi sound effect.

User's Manual will help you how to use the headphones and know the multifunction of the headphones, before using the headphones, pls reading the User's Manual carefully.

The JH-9105 stereo bluetooth headphones using the touch control technology, can eliminate the discomfort which is brought when pressing the general button. At the same time, using the touch control, it can also adjust the product structure and reduce the gap, to improve the waterproof function.

JH-9105 bluetooth headphones using the wireless charging technology innovative, the headphones can be charged simply in any piece of time, no need any wire connection. At the same time, using the wireless charging box can avoid the product damage from using wrong power adapter and cope with the potential safety hazard. (Wireless charging version only)

Combine the latest technology with product design, improving the user-experience.

Excellent craft creates listening technology.

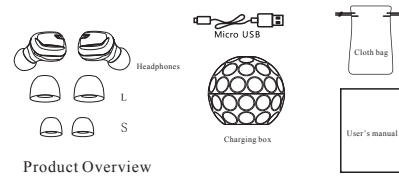
### Safety Rules

- To ensure safety, please follow the rules mentioned in this manual. Before using the Bluetooth headset, we strongly recommend that you read this manual carefully.
- Please pay attention to the damage from sharp edge, uneven surface, metal parts, accessories and packaging of the product.
- Please do not open, dismantle or repair this product, this may lead to fire, electronic breakdown or even completely damage the product, these are not included in the warranty.
- Do not wipe the product with oil and other volatile liquids.
- Please using this product under the provisions on administration of the wireless bluetooth device.

### Packing List

• 1 •

- Headphones\*2PCS
- Earbud cap\*2Pairs
- User's manual\*1
- Charging box\*1
- Micro USB\*1
- Cloth bag\*1

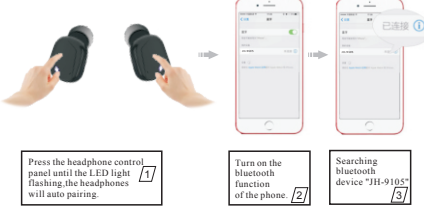


Product Overview

### Quick Setting Guide

#### 1. Connecting Phone

First time connecting



- Press the "R" headphone panel until the LED light flashing and hearing :Power On.
- Press the "L" headphone panel until the LED light flashing and hearing :Power On.
- "L" and "R" headphone will connect each other for TWS stereo mode and hearing: pairing.
- After pairing successful, audio prompt from "L" headphone is Left Channel, audio prompt from "R" headphone is Right Channel.

• 2 •

- Turn on the bluetooth function of the phone, searching bluetooth device "JH-9105"
- Select "JH-9105", enter password "0000" if necessary.

After connecting successful, the audio prompt is Pairing successful.

#### ATTENTION:

After headphone first time connected with phone, when the headphone connecting again with the same phone, just need the A and B steps mentioned above, the headphone will auto connect with the phone.  
"L" and "R" headphone can be used as mono headphone, when using mono headphone mode, just need the A and E steps or B and E steps mentioned above to connecting with the phone.

In the course of using the headphones, if there are two same bluetooth device name "JH-9105" on the phone and only one of the headphone is connected with the phone, please delete these two devices on the phone, restart the headphones and reconnecting with the phone as the first connecting.

#### 2. Touch Control Function Definition

- Answer calling :one click the "L" headphone panel during the call ringing.
- Hung up :one click the headphone panel during talking.
- Reject calling :double click the headphone panel to reject the calling.
- Redial the last number :double click the headphone panel while headphone standby.
- Play music :after open the music app on the phone, one click "L" headphone panel.
- Pause :one click "L" headphone panel while the music is playing.
- Next song :press the "L" headphone panel for 2seconds.
- Long press the headphone panel over 3seconds, the headphone will power off.

#### ATTENTION:

In order to ensure the voice quality, please remove the protective film from the headphone panel.

When using the headphone for talking, only the "L" headphone is working, this is the normal setting for the headphones, not the property and quality problems.

• 3 •

During the talking, the voice quality will be influenced by the distance and environment, such as near the high-power wireless device, intensive WIFI signal, enclosed space and noisy environment.

The supporting format of the headphone is according to the phone hardware decoding. Except the APTX format can not be supported, the others are all supported. In order to ensure the best sound, pls use the normal lossless downloaded music format, on-line music will cause the intermittent or distortion.

**First time using, in order to ensure the voice quality, please remove the protective film from the headphone panel and don't cover the headphone panel.**

#### 3. Charging box:

The charging box can support the headphone to auto charging and auto power off.

The charging box is included 400mAh battery, can support the headphone charging for 3times.

The charging box is included the wireless charging reception unit, match with the wireless charger base, no need any wire connection, it will charging directly, this will help to avoid using the wrong charger and USB cable problems. (Wireless charging version only).

Headphone charging time is 1.5hours, charging box charging time is 1.5hours.

The minimum requirement for charging voltage and current is DC5V 1A, if lower than this, the charging time will be longer.

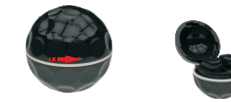
A. When putting the headphone back to the charging box, the headphone will auto charge until fully charged. When the headphone is charging, the LED light will keep red, when fully charged, the LED light will turn off.

B. Press the ON/OFF button of the charging box, the charging box LED light will turn on and the headphone will start charging directly.

C. During the headphone is charging, double click the ON/OFF button of the charging box, the charging box LED light will turn off and the headphone will stop charging.

D. When putting the headphone back to the charging box, the headphone will auto power off, disconnect the connection with the phone.

• 4 •



Twist the charging box from left to right to open it, as shown in the figure

#### ATTENTION:

Please remove the insulating strip between the charging box and headphone when first time using.

If long time no use this product, please charge the charging box and headphone before using it again.

Please using the right wireless charger and eligible charging cable (Wireless charging version only).

#### 4. Engineering Mode

A. "L" and "R" headphone can be used as mono headphone, connected method: open the single headphone, starting the pairing mode alone, and connected with the phone.

#### ATTENTION:

"R" headphone connect with phone as mono communicator is not recommendable, since it will cause Stereo mode could not be used normally.

#### SOLUTION:

Enter the bluetooth device list of phone, delete two headphones (same device name list on the phone), and use the "L" headphone to connecting with the phone again.

B. In general, the "L" headphone and "R" headphone will be paired complete before shipment, user no need to handle this.

• 5 •

### 5. Product Parameter

#### 1. Headphone Parameter

Earphone Battery: Polymer Lithium Battery 50mAh  
Bluetooth Version: 4.2  
Operating Voltage: 3.3V-4.2V  
Charging Voltage: DC 3.7V  
Bluetooth Frequency: 2.4-2.48GHz  
Bluetooth Transmission Distance: 10M  
Speaker Impedance: 32Ω  
Speaker Frequency : 20-20KHz  
Speaker Sensitivity: 105dB  
Microphone Sensitivity: -42±2dB  
Audio transmission format: A2DP / HFP / HSP / AVRCP  
Headphone talking distance: 10M  
Talking time: 2hours  
Music time: 2hours

#### 2. Charging Box Parameter

Charging Box Battery: Polymer Lithium Battery 400mAh  
DC Charging Current: 350mA  
DC Charging Voltage: DC 5V

• 6 •

### FCC STATEMENT :

This device complies with Part 15 of the FCC Rules. Operation is subject to the following two conditions:

- This device may not cause harmful interference, and
- This device must accept any interference received, including interference that may cause undesired operation.

#### Warning:

Changes or modifications not expressly approved by the party responsible for compliance could void the user's authority to operate the equipment.

#### NOTE:

This equipment has been tested and found to comply with the limits for a Class B digital device, pursuant to Part 15 of the FCC Rules. These limits are designed to provide reasonable protection against harmful interference in a residential installation. This equipment generates uses and can radiate radio frequency energy and, if not installed and used in accordance with the instructions, may cause harmful interference to radio communications. However, there is no guarantee that interference will not occur in a particular installation. If this equipment does cause harmful interference to radio or television reception, which can be determined by turning the equipment off and on, the user is encouraged to try to correct the interference by one or more of the following measures:

- Reorient or relocate the receiving antenna.
- Increase the separation between the equipment and receiver.
- Connect the equipment into an outlet on a circuit different from that to which the receiver is connected.
- Consult the dealer or an experienced radio/TV technician for help.

• 7 •

### FCC Radiation Exposure Statement:

The device has been evaluated to meet general RF exposure requirement. The device can be used in portable exposure condition without restriction.

• 8 •

## Warranty Card

Product name :	Model :
Sale Date :	
Contact Number :	
Address :	
Defect :	

### Terms of Warranty

- We provide 180 days warranty for the function defect of main body, the main body and package should be kept integrity, no man-made surface break. The accessories are not including in the warranty.
- The warranty service is expired based on ordinary using of product, all malfunction and damaged caused by man-made broken, unauthorized repairs and alteration, incorrect use are not included in the warranty.
- The warranty card should be provided for each warranty claim. If it can not be provided or unilateral amendment, our company will have rights to regard it as no warranty.

• 9 •



User's manual