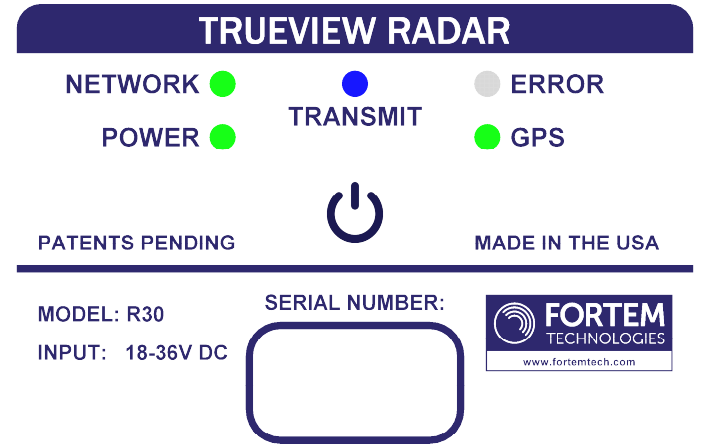
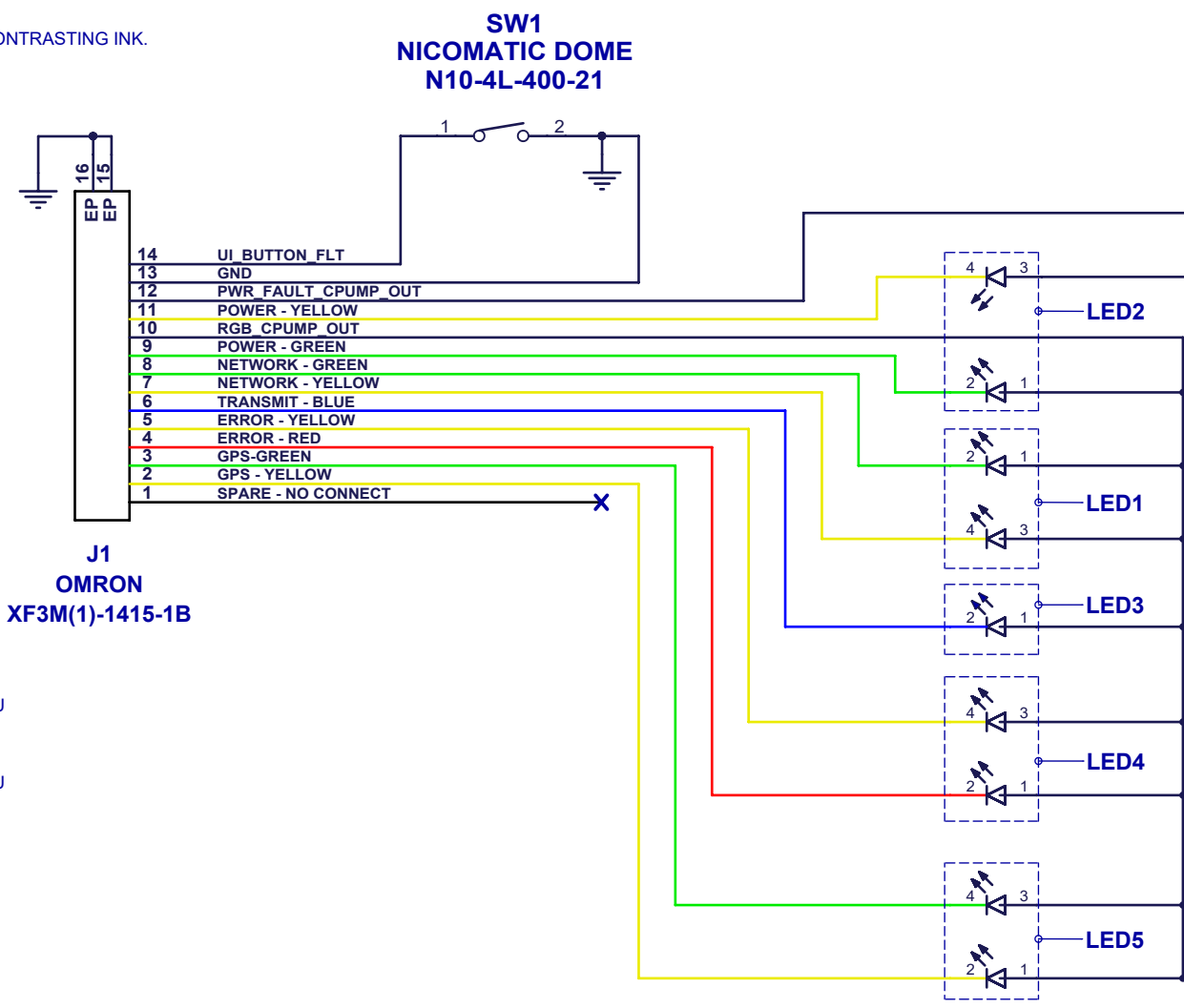
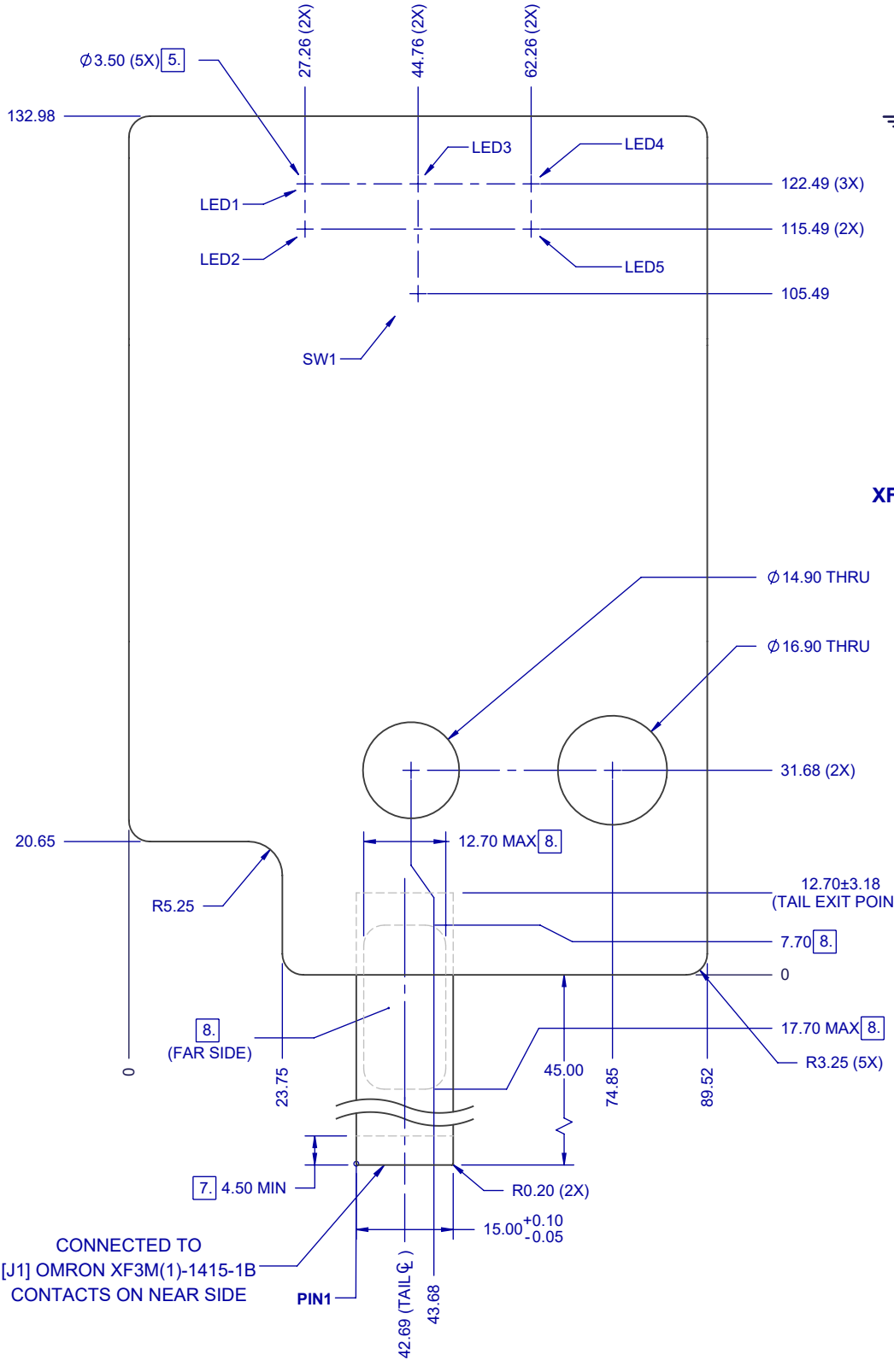


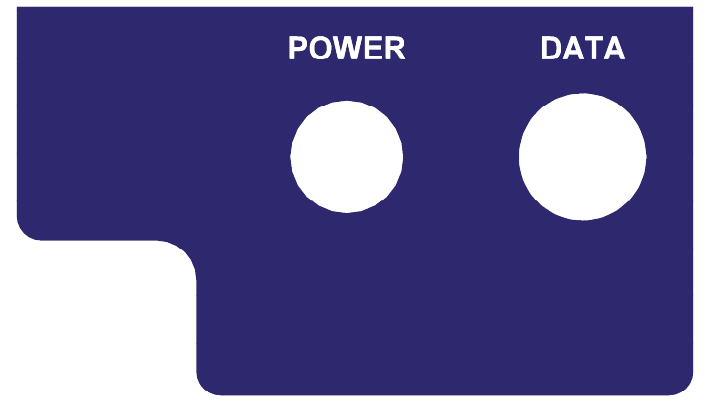
NOTES:

- MANUFACTURER TO SUPPLY CERTIFICATION OF MATERIAL WITH EACH LOT.
- UNSPECIFIED CORNER RADII TO BE 0.2mm ±0.10mm
- INKS USED FOR GRAPHICS MUST BE UV RESISTANT AND NOT SMUDGE OR FADE
- ALL MATERIALS USED MUST HAVE AN OPERATING TEMPERATURE OF -40°C TO +60°C
- APPLY TRANSLUCENT WHITE INK ONLY IN THE AREAS INDICATED (60-70% OPAQUE). ALL OTHER AREAS WILL BE OPAQUE .
- CONSTRUCTION IS AS FOLLOWS:
 - GRAPHIC OVERLAY = 8 MIL AUTOTEX XE POLYESTER
 - TOP ADHESIVE = 3.5 MIL 3M 467MP
 - DOME RETAINER = 3 MIL POLYESTER
 - SPACER = 11 MIL
 - CIRCUIT = 5 MIL
 - BOTTOM ADHESIVE = 3.5 MIL 3M 467MP (NEEDED AROUND ENTIRE PERIMETER OF LABEL TO SEAL FOR OUTDOOR USE)
 - TOTAL STACKUP THICKNESS = 34 MIL [0.864mm ± 0.130mm]
- APPLY TAIL STIFFENER AS INDICATED. OVERALL THICKNESS NOT TO EXCEED 0.3MM±0.05
- MARK WITH PART NUMBER AND REVISION AS "200-0042-G" WHERE INDICATED WITH A LABEL OR LEGIBLE CONTRASTING INK.

ZONE	REV.	DESCRIPTION	DATE	APPROVED
	D	MOVED PIN 1 LOCATION ON TAIL TO OPPOSITE SIDE TO WORK WITH I/O BOARD, UPDATED ARTWORK. ECN0188	04/22/19	PF
	E	CHANGED SCHEMATIC FOR BETTER CIRCUIT LAYOUT, ADD REVISION LABEL/MARKING. ECN0196	05/16/19	JEK
	F	ECN0228 - REMOVE "FORTEM" BEFORE "TRUEVIEW" AND CENTER "TRUEVIEW RADAR"; BLUE RGB COLOR CORRECTION	09/30/19	JEK
	G	ECN0343 - REMOVE "FOR EVALUATION ONLY" ADD FCC ID	11/05/19	JEK



This device complies with Part 15 of the FCC Rules. Operation is subject to the following two conditions: (1) This device may not cause harmful interference, and (2) this device must accept any interference received, including interference that may cause undesired operation. FCC ID: 2APIM-FTR30SKYD



- NICOMATIC LEDES:**
- LED1 = BUYMG57W-05
 - LED2 = BUYMG57W-05
 - LED3 = ZUB55W-05
 - LED4 = BURUY57W-05
 - LED5 = BUYMG57W-05

ARTWORK 1:1
 BLUE = PANTONE 274C, RGB (33,28,82)
 WHITE = RGB (255,255,255)



UNLESS SPECIFIED DIMENSIONS AND TOLERANCE ARE mm [in]		DESIGNED	J.KNABENSCHUH	09/11/2018
.X	±0.30mm [0.012in]	DRAWN	J. KNABENSCHUH	09/12/2018
.XX	±0.13mm [0.005in]	APPROVED	-	-
PARTS MUST BE FREE FROM BURRS AND SHARP EDGES. MINIMUM RADIUS AND RELIEF ON ALL BENDS.		MATERIAL	REFER TO NOTES	
THIRD ANGLE PROJECTION		FINISH	REFER TO NOTES	
PROPRIETARY AND CONFIDENTIAL INFORMATION CONTAINED IN THIS DOCUMENT IS CONFIDENTIAL AND THE EXCLUSIVE PROPERTY OF FORTEM TECHNOLOGIES. DELIVERY OR REPRODUCTION OF SUCH INFORMATION TO UNAUTHORIZED PERSONS IS FORBIDDEN.				

		2015 W GROVE PARKWAY, STE H PLEASANT GROVE, UT 84062 UNITED STATES	
TITLE: R30 MEMBRANE SWITCH ASSEMBLY			
SIZE	SCALE	DRAWING NO.	REV
B	1:1	200-0042	G
WEIGHT: 8.49 grams		SURFACE AREA: 24809.73 mm ²	
SHEET 1 OF 1			