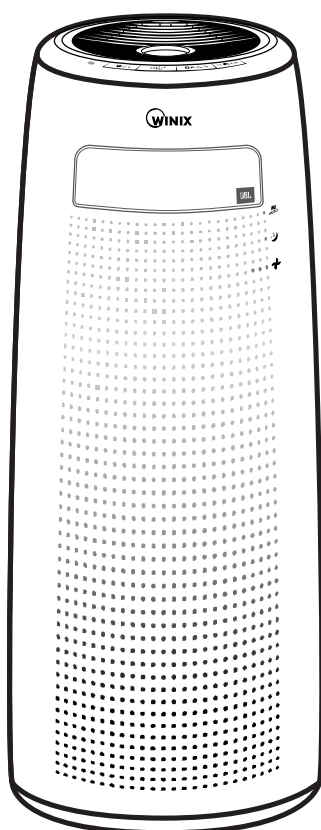




WINIX AIR PURIFIER



Model WINIX QS

Use & Care
Guide



Please read this manual before operating.

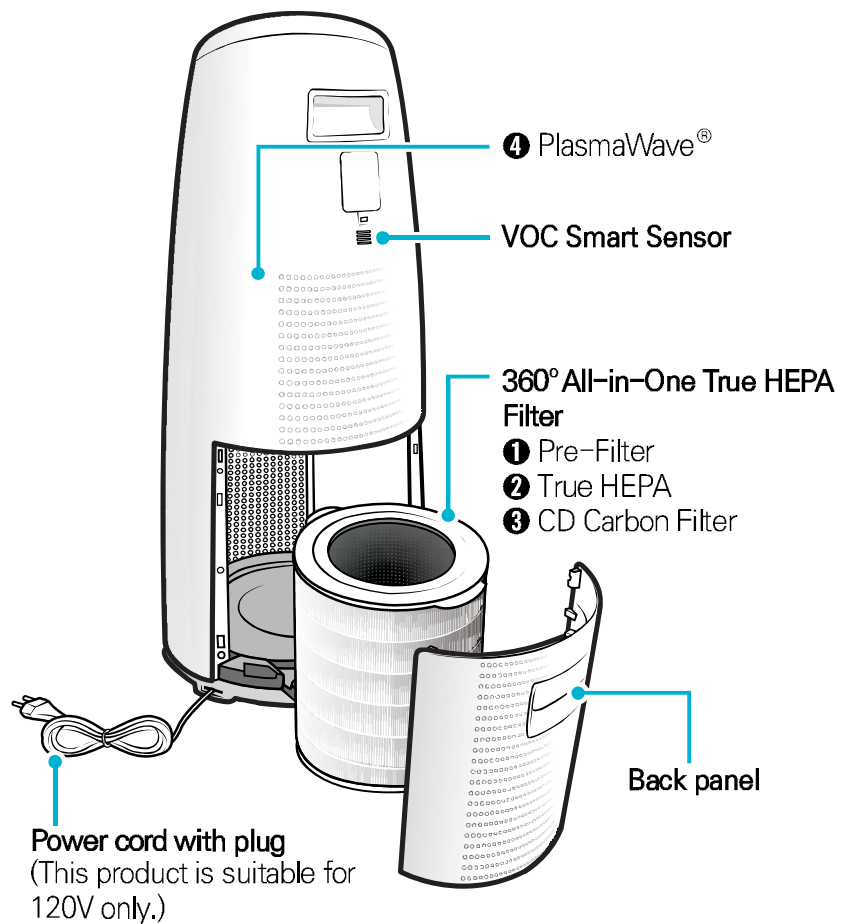
- The product warranty is printed on the back of this guide, so please keep it in a safe place for future use.

CONTENTS

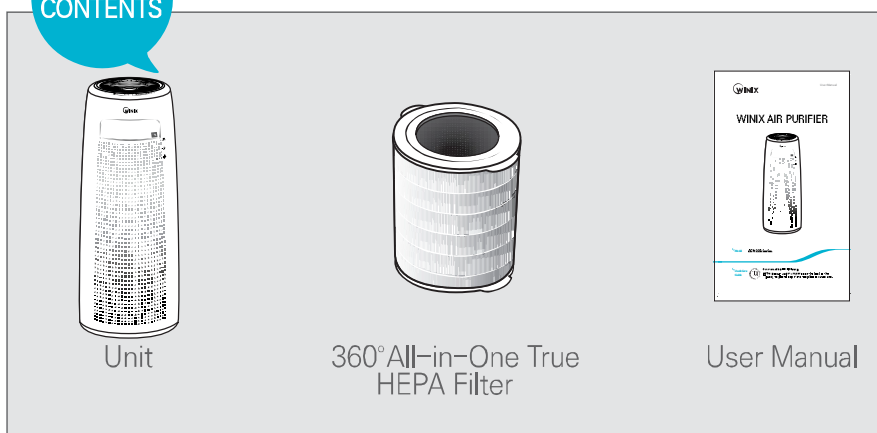
4-STAGE AIR PURIFICATION	3	FILTER CARE	16
CONTROLS	4	1. Know The Filters	16
WHERE TO USE	5	2. Removing Filters	17
360° All-in-One True HEPA Filter	6	3. Preparing New Filters	17
360° All-in-One True HEPA Filter ANATOMY	7	4. Replacing Filters	18
INSTALLING FILTERS	8	5. Resetting The Unit	18
SAFETY AND CAUTIONS	10	6. Cleaning the filter	19
INITIAL OPERATION	11	CLEANING CARE	20
AUTO & SLEEP	12	Cleaning the Exterior & Interior	20
1. Auto Mode	12	FREQUENTLY ASKED QUESTIONS	21
2. Sleep Mode	12	When a Bluetooth connection is in use	22
3. Manual Mode (setting fan speed)	13	UNIT SPECIFICATIONS	23
4. PlasmaWave®	13	SAFETY INSTRUCTIONS	24
5. Bluetooth	14	SPECIFICATIONS (Speaker, Bluetooth)	26
6. Air Quality Indicator	15	PRODUCT WARRANTY	27

► This product is suitable for 120 V only.

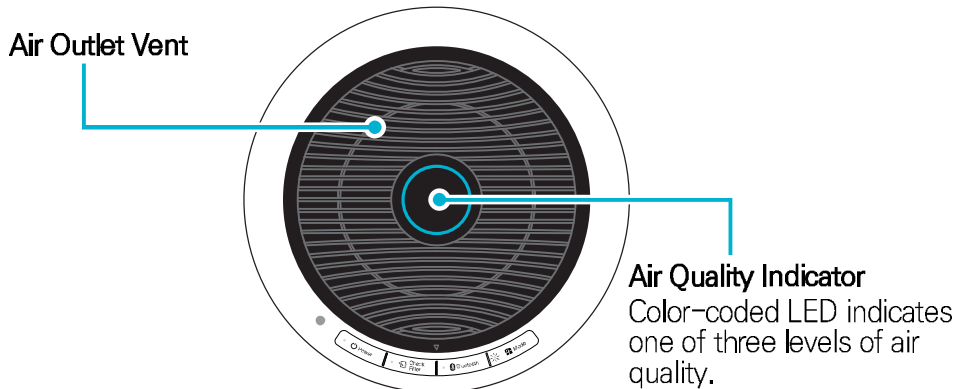
4-STAGE AIR PURIFICATION



PACKAGE CONTENTS

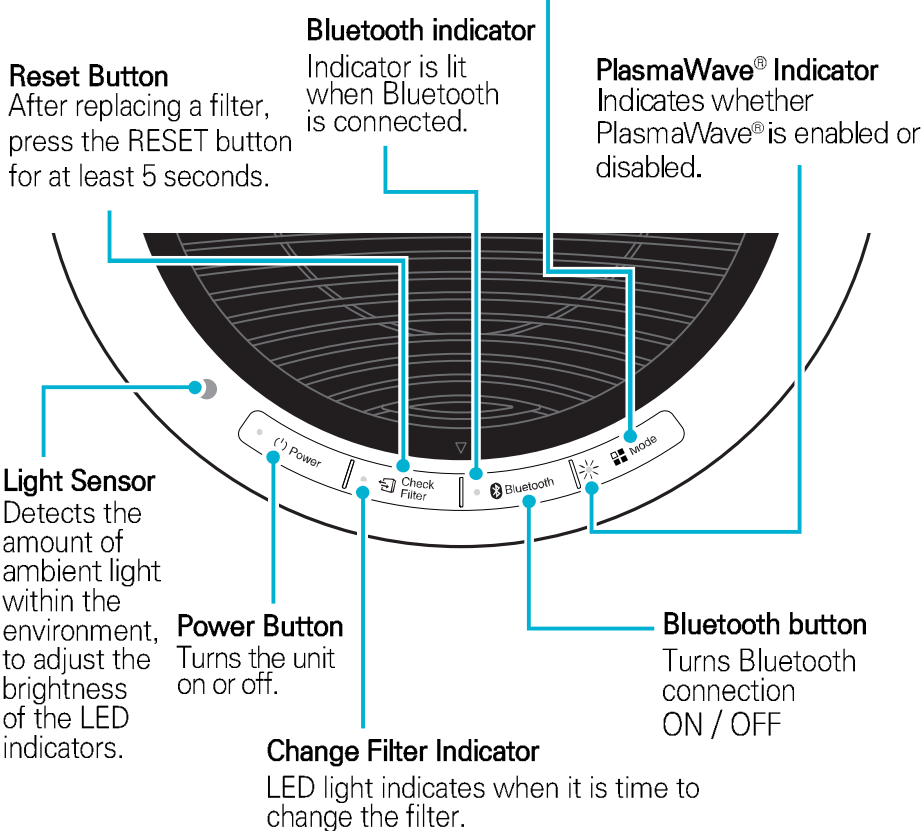


CONTROLS



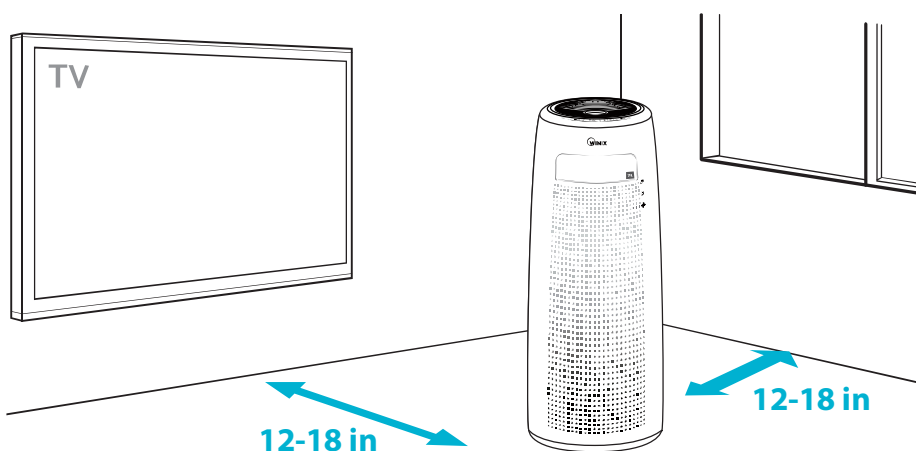
Mode Button

- Press to cycle through manual fan speeds (Low, Medium, High, Turbo).
- Pressing will also cycle through Auto and Sleep Modes.
- When sleep mode is selected the Air Quality Indicator light will be turned off.
- Press and hold for at least 3 seconds to enable or disable PlasmaWave®.



WHERE TO USE

- Allow 12 – 18 in. of space between TVs, radios, and other electronic products
 - electromagnetic interference from certain electronics may cause product malfunction.
- Place indoors away from direct sun light
 - direct exposure may cause product malfunction or failure.
- Only place on hard, flat surfaces
 - flimsy or slanted surfaces may result in abnormal noise and vibrations.



WARNING

Follow these instructions to reduce the risk of serious injury or death and to reduce risk of damaging the unit.



Do not use around mist or fumes from industrial oil or around large quantities of metallic dust



Do not place around heating elements



Do not install in any sort of motor or transport vehicle (trucks, boats, ships, etc.)



Do not place in an area with excessive amounts of noxious gases



Do not place near any flammable materials (aerosols, fuel, gases etc.)



Do not have unit facing into wind or draft



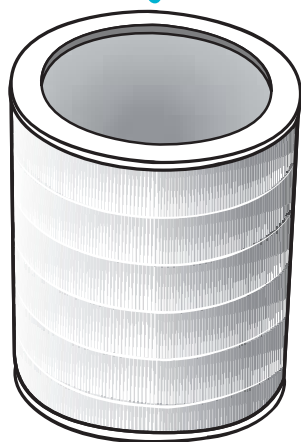
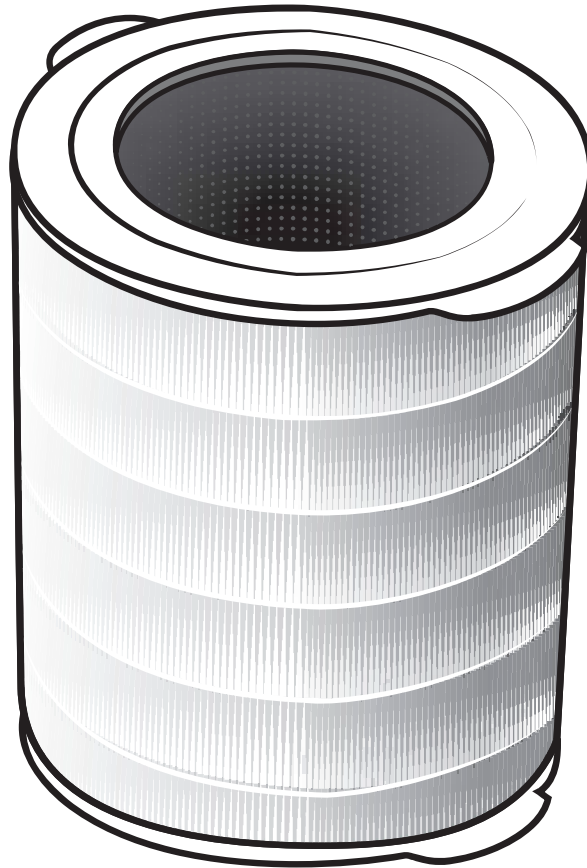
Do not place below any electrical outlet



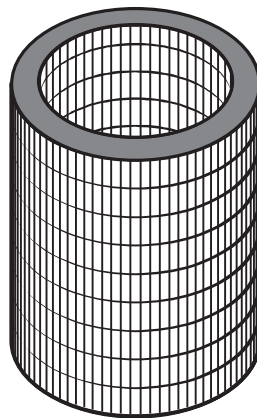
Do not place in excessively humid areas where unit may become wet

※ This unit is not intended to be used to preserve documents or in art conservation.

360° All-in-One True HEPA Filter



1 Pre-Filter

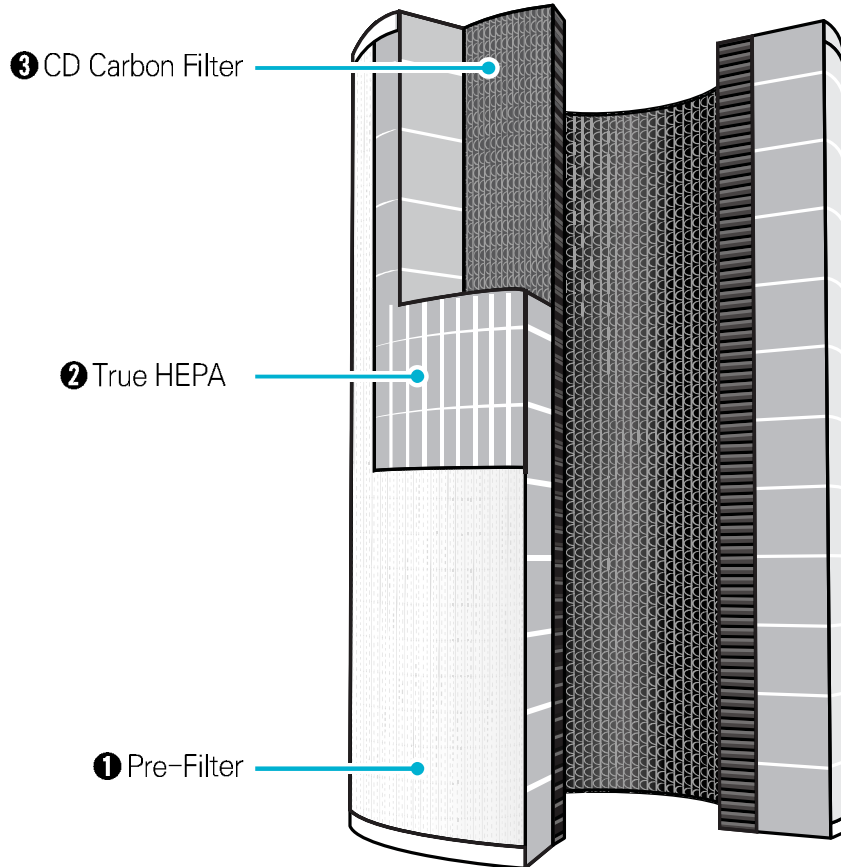


2 True HEPA



3 CD Carbon Filter

360° All-in-One True HEPA Filter ANATOMY



- ① **Pre-Filter** designed to catch larger airborne particles found indoors.
- ② **True HEPA** captures 99.97%* of airborne allergens including; pollen, Mould spores, dust, pet dander, microbes, and smoke.
*particles as small as 0.3 microns in size
- ③ **CD Carbon Filter** reduces VOCs and household Odors from cooking, pets, and smoke.

 **Note**

- The **360° All-in-One True HEPA Filter** is one unit and the individual components of the filter cannot be purchased separately.

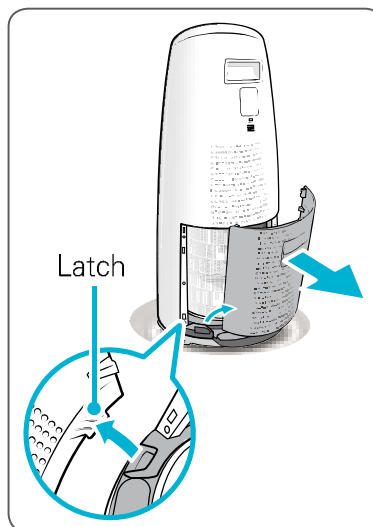
INSTALLING FILTERS

This product comes with all required filters. The protective plastic wrap must be removed from the filter before use.

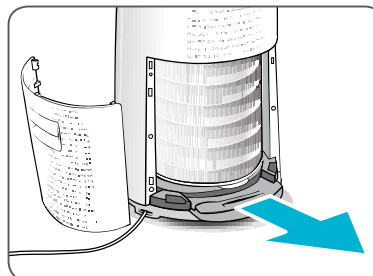
※ Operating the unit without removing the plastic wrap may result in product failure.

※ Unplug and make sure the unit is turned off before installing filter.

- ① Remove the back panel by grasping handle and pulling back, towards yourself.

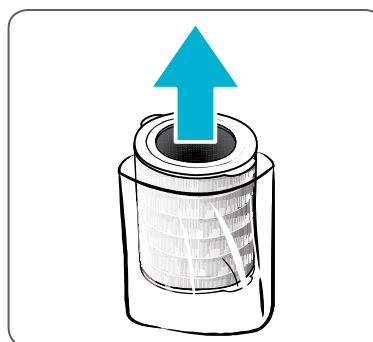


- ② Once the back panel is removed, grasp the handle near the bottom of the unit, and pull towards yourself to lower and release the filter.



- ③ Remove the **360° All-in-One True HEPA** filter from the unit. Remove the plastic wrap from the filter.

- Operating the unit without removing filters from plastic wrap may cause abnormal noise, deformation, or fire as a result of overheating.



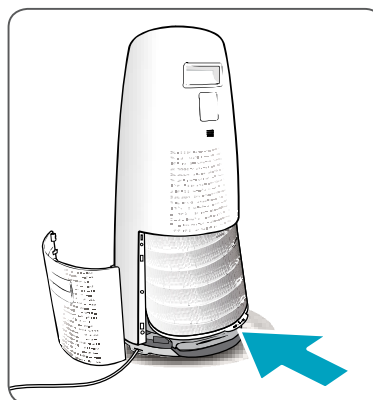
Note

- Refer to pages 17 – 19 for details on how to replace filters.

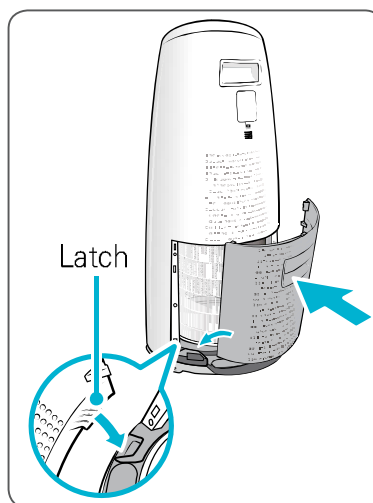
INSTALLING FILTERS

④ Install the filter, top side up, into the unit until it is fully inserted. Grasp lower handle near bottom of the unit and push in until the filter locks into place.


- The top of the filter shows the opening into the filter. Whereas the bottom is solid, with no opening.
- When installing the filter you will know it is fully inserted because it will no longer be able to be pushed further.



⑤ Replace the back panel by first inserting the latch at the bottom edge into the base of the unit, then rotate the panel upward toward the top of the unit until the panel snaps into the unit.



⑥ When to service and replace filter:

Filter	Indicator Light	When to service	When to replace
360° All-in-One True HEPA Filter	 Check Filter	Clean once every 14 days	Lasts up to 12 months

※ Intervals between filter replacement may vary depending on environment.

※ For optimal use, the filter can be cleaned once every 14 days.

※ To clean the filter, vacuum the outside of the filter with a soft brush.

※ **THIS FILTER CANNOT BE WASHED**

To purchase replacement Winix filters:

(877) 699-4649

www.winixamerica.com



SAFETY AND CAUTIONS

Before operating this equipment, carefully read and follow these safety cautions

Ensure filter is inserted before running unit

running unit without the filter can shorten the units life and cause electric shock or injury.

Be sure foreign objects are NOT inserted into the vents on the unit

objects can include pins, rods, and coins.

Do not touch any part of the interior of the unit with wet hands

the high voltage may cause electric shock.

Ensure unit intake and outlet vents do not become blocked

blockage may lead to increased internal temperatures causing product failure and deformation.

Do not use the unit as a step stool or place heavy objects on it

personal injury may occur or product failure and deformation.



WARNING

Follow these instructions to reduce the risk of serious injury or death and to reduce risk of damaging the unit.



Do not pull on the power cord when unplugging the unit



Do not tie or knot power cord when unit is in operation



If the unit becomes submerged in water, unplug it and contact customer service



Do not unplug or move the unit while in operation



Do not plug additional appliances into the same outlet or power supply



Do not touch the plug with wet hands



Unplug unit when not in operation for extended periods of time

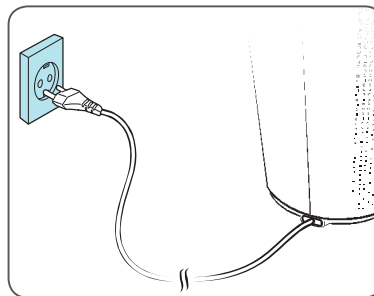


Cord can become damaged by forcefully bending, pulling, twisting, bundling, pinching or placing heavy objects on it

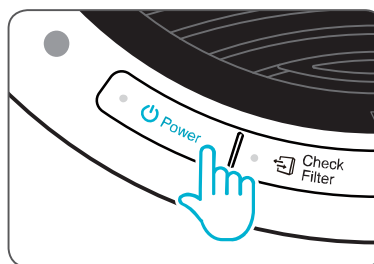
- 1** If the supply cord is damaged, it must be replaced by the manufacturer, its service agent or similarly Qualified persons in order to avoid a hazard.
- 2** This appliance is not intended for use by persons (including children) with reduced physical sensory or mental capabilities, or lack of experience and knowledge, unless they have been given supervision or instruction concerning use of the appliance by a person responsible for their safety.
- 3** Children should be supervised to ensure that they do not play with the appliance.

INITIAL OPERATION

- ① Insert the power cord into an electrical outlet.



- ② Press the 'Power' button.

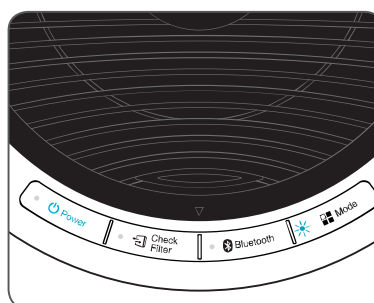


✔ Note

- During the first 30 seconds of power up, the Air Quality Indicator will flash as the Smart Sensor measure the air quality in the environment, after which normal operation will begin.

- ③ By default, when the unit first powers on, the mode will be set to Auto with PlasmaWave® enabled.

- When in Auto mode, the fan speed will be automatically adjusted according to the environment's air quality.
- PlasmaWave® works to remove harmful airborne contaminants.



✔ Note

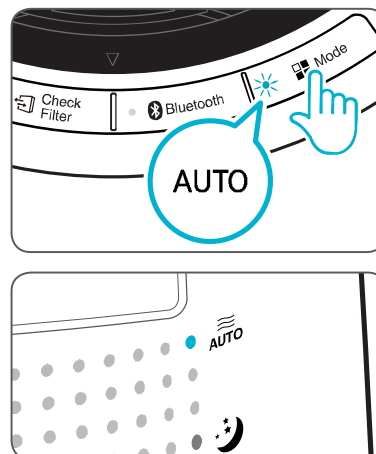
- In Auto mode, as the indoor air quality improves, the fan speed will automatically be reduced to Low.
- When the unit is running, you may hear a chirping or buzzing sound. The sound is from large particles passing through PlasmaWave®, it is normal and does not signify product failure. To disable PlasmaWave®, see page 13.

AUTO & SLEEP

1. Auto Mode

Enables auto operation based on the unit's air quality Smart Sensor.

- ① Press the Mode button to select Auto mode.
 - The LED 'Auto' light will indicate when Auto mode is activated, and operation will begin.

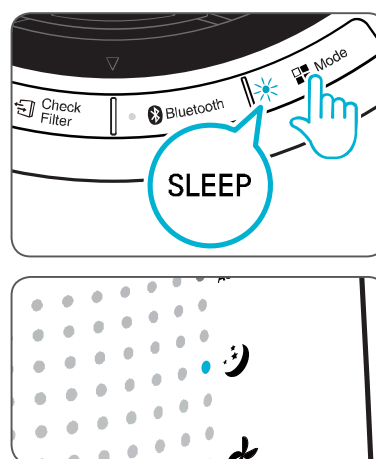


✓ Note

- When in Auto mode the fan speed is automatically adjusted according to the indoor air quality. As the indoor air quality improves, the fan speed will automatically be reduced. If the indoor air quality decreases, the fan speed will automatically increase.

2. Sleep Mode

- ① Press the Mode button to select Sleep mode.
 - The LED "Sleep" light will indicate when Sleep mode is activated, and operation will begin.



✓ Note

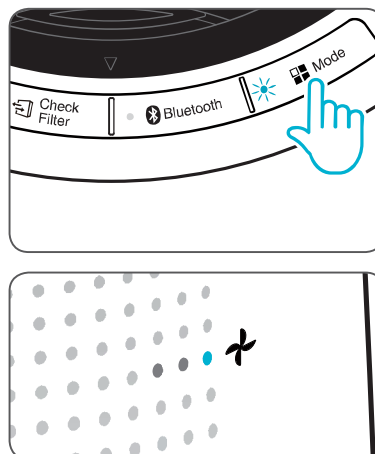
- When Sleep mode is selected, the fan speed is automatically set to Low. The fan speed can be manually changed by pressing the Fan Speed button, changing the unit into manual mode.
- When Sleep Mode is activated, the Air Quality Indicator LED light is disabled.

MANUAL & PLASMAWAVE

3. Manual Mode (setting fan speed)

Users can opt to manually set the fan speed to Low, Medium, High, or Turbo.

- 1 Press the Mode button to set the desired fan speed.
 - When the button is pressed the unit will cycle through Auto Mode, Sleep Mode and fan speeds (Low, Medium, High, Turbo).



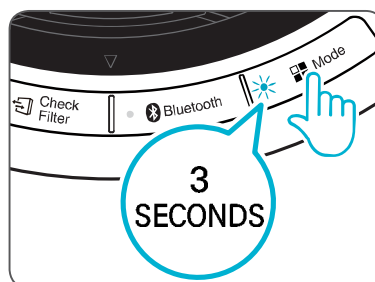
Note

- When Manual Mode is selected, Auto and Sleep Modes are automatically disabled.

4. PlasmaWave®

By default, PlasmaWave is enabled whenever the unit is powered on.

- 1 When the unit is on, press and hold the Mode button for at least 3 seconds to enable or disable this feature.
 - When PlasmaWave® is enabled the indicator light will be on. When it is disabled the light will be off.



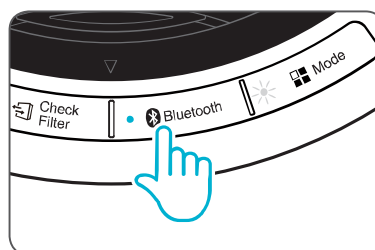
Note

- In Auto mode, as the indoor air quality improves, the fan speed will automatically be reduced to Low.
- When the unit is running, you may hear a chirping or buzzing sound. The sound is from large particles passing through PlasmaWave®, it is normal and does not signify product failure.

BLUETOOTH

5. Bluetooth

- ① Press the **[Bluetooth]** button.
 - This button turns the Bluetooth connection ON / OFF.
 - The indicator is lit when Bluetooth is connected.



How to set up Bluetooth pairing

- Setting up a Bluetooth connection (pairing) between the unit and a particular device is required the first time they are used together.
 - Once the pairing has been set up, the device connects automatically when it is turned on.
- ① **DEVICE PAIRING INSTRUCTIONS:** Press the (**Bluetooth**) icon. The LED will blink as the unit enters pairing mode.
 - ② Select "WINIX QS" from the Bluetooth device to attempt pairing.
 - ③ When pairing is complete, the LED will blink and a beeping sound will be heard.
 - ④ Music from a Bluetooth-enabled device can be played through the unit's speaker.

How to deactivate a Bluetooth pairing

Press and hold the Bluetooth icon for at least 3 seconds. The LED will blink as the pairing is canceled.

(To pair with another device, the existing pairing must be disabled.)



NOTICE

- The unit maintains a one-to-one link with the paired Bluetooth-enabled device. Once the pairing is canceled, the unit can be linked with a different device.

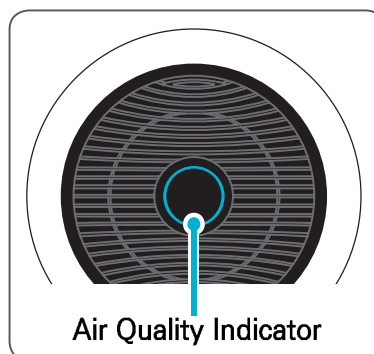
Bluetooth pairing and fan speed

- When pairing is complete, the fan speed switches to **[Low]**. Note that the fan speed remains the same when in the manual sleep mode.
- The fan speed can be re-adjusted manually if desired after it has switched to **[Low]**.
- Once the pairing is canceled, the fan speed will return to its original state.

AIR QUALITY INDICATOR

6. Air Quality Indicator

When on, the LED light will indicate the current indoor air quality according to three levels: BLUE (good), AMBER (fair), RED (poor).




Note

- Air quality level is displayed on the indicator, based on the Smart Sensor. Depending on the immediate environment, the indicator may change frequently in color or stay the same for lengthy periods of time.
- When the unit is in Sleep Mode the Air Quality Indicator will be turned off to allow for ultimate night time operation.

FILTER CARE

1. Know The Filters

When the Check Filter indicator LED is on, it is time to replace the filter.

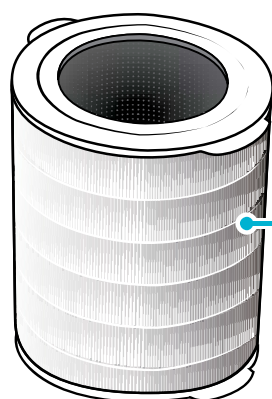
Filter	Indicator Light	When to service	When to replace
360° All-in-One True HEPA Filter	 Check Filter	Clean once every 14 days	Lasts up to 12 months

- ※ Intervals between filter replacement may vary depending on environment.
- ※ For optimal use, the filter can be cleaned once every 14 days.
- ※ To clean the filter, vacuum the outside of the filter with a soft brush.
- ※ **THIS FILTER CANNOT BE WASHED**

To purchase replacement Winix filters:

(877) 699-4649

www.winixamerica.com



360° All-in-One True HEPA Filter

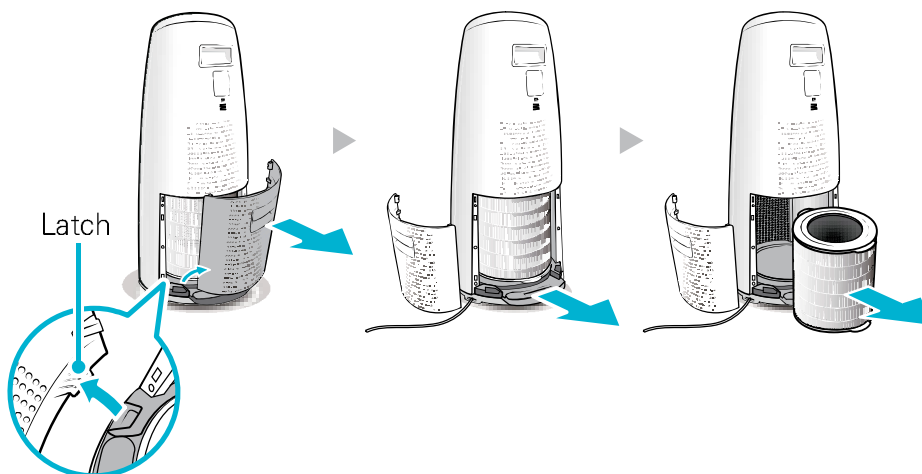
Note

- The filters' life varies depending on the level of pollutants in the air. The more dust present in the environment, the more dust accumulates in the filters, shortening the life.
- If the filter is heavily soiled or has a bad Odour, or if the fan strength is significantly weakened, replace the filter even if the Change Filter indicator has not yet turned on.

FILTER CARE

2. Removing Filters

Turn the unit power off before removing filters.

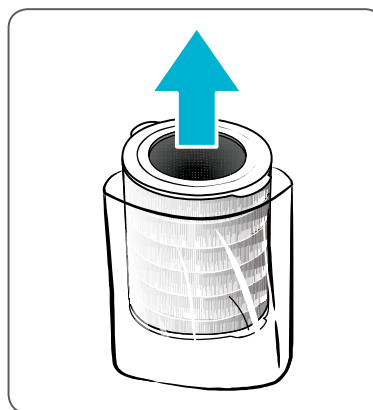


Remove the back panel by grasping the handle and gently pulling towards yourself.

- ① Grasp the lower handle on the unit and pull straight out, towards yourself until the filter is released.
- ② Pull out the **360° All-in-One True HEPA Filter**.

3. Preparing New Filters

- ① Remove replacement filter from protective plastic wrap.
 - Operating the unit without removing filters from plastic wrap may cause abnormal noise, deformation, or fire as a result of overheating.

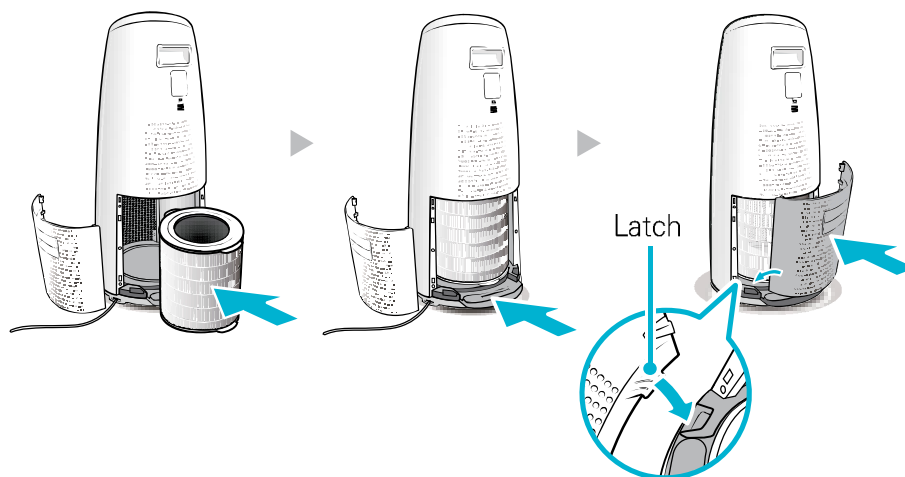


NOTICE

- For optimal performance, only genuine Winix filters should be used with this unit.

FILTER CARE

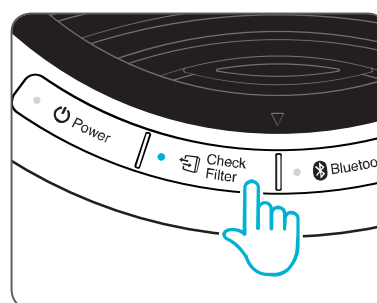
4. Replacing Filters



- ① Install the filter, top side up, into the unit until it is fully inserted. Grasp lower handle near bottom of the unit and push in until the filter locks into place.
 - The top of the filter shows the opening into the filter. Whereas the bottom is solid, with no opening.
 - When installing the filter you will know it is fully inserted because it will no longer be able to be pushed further.
- ② Replace the back panel by first inserting the latch at the bottom edge into the base of the unit, then rotate the panel upward toward the top of the unit until the panel snaps into the unit.

5. Resetting The Unit

- ① After replacing the filter, turn the power back on and then press and hold the Check Filter button for at least 5 seconds to RESET the filter life in your unit.



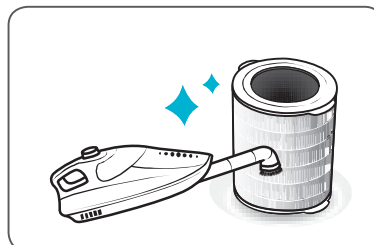
FILTER CARE

6. Cleaning the filter

Intervals between filter cleaning may vary depending on the air quality.

① Clean with a vacuum or a soft brush

- Only clean the pre-filter.
- This filter **CANNOT** be washed.



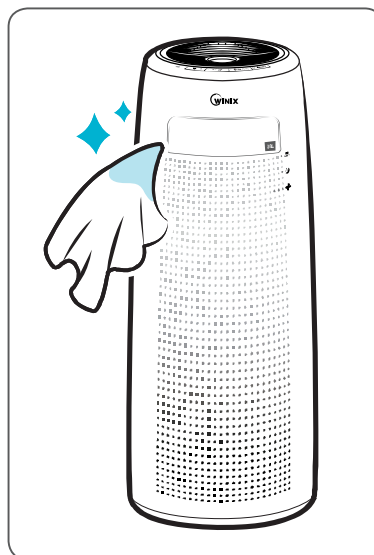
NOTICE

- Do not use benzene, alcohol, or other volatile fluids, which may cause damage or discoloration.

CLEANING CARE

Cleaning the Exterior & Interior

- ① Wipe with a soft damp cloth using room temperature water. Afterwards, wipe it down with a clean dry cloth.
 - To keep unit in peak condition, clean every 1 – 2 months.



- ② In order to clean the interior, open the back panel and remove filter, then use vacuum cleaner to remove excess dirt and dust.
 - For optimal performance, clean every 1 – 2 months.



NOTICE

- When cleaning the unit, always unplug the power cord first and then wait until the unit has cooled down.
- Never disassemble, repair, or modify this unit yourself.
- Do not use flammable sprays or liquid detergents.
- Do not allow children to clean or maintain the unit.
- Before cleaning or maintaining, ensure unit is unplugged.

FREQUENTLY ASKED QUESTIONS

Problem	Check / Actions to take
<p>It does not turn on at all.</p>	<ul style="list-style-type: none"> • Is the plug securely attached to the outlet? <ul style="list-style-type: none"> – Make sure the outlet has power going to it, and ensure the plug is secured. • Is there a power outage? <ul style="list-style-type: none"> – Check to see if other lights and electrical equipment are working and try again.
<p>It doesn't work in Auto Mode.</p>	<ul style="list-style-type: none"> • Has Auto Mode been selected? <ul style="list-style-type: none"> – Press the Mode button until Auto Mode is selected. • Is the sensor blocked or clogged? <ul style="list-style-type: none"> – Use a damp cotton swab to wipe the lens and intake area of the dust sensor, and then wipe the dust sensor with a dry cotton swab. (Cleaning interval: EVERY 2 MONTHS)
<p>It vibrates and makes a lot of noise.</p>	<ul style="list-style-type: none"> • Is it running on a slanted or uneven surface? <ul style="list-style-type: none"> – Move the unit to a hard, flat, even area of the floor.
<p>The power plug and outlet feel hot.</p>	<ul style="list-style-type: none"> • Is the plug securely plugged in? <ul style="list-style-type: none"> – Make sure the plug is properly plugged into the outlet.
<p>There is a strange smell.</p>	<ul style="list-style-type: none"> • Is it being used in a place with a lot of smoke, dust, or odors? <ul style="list-style-type: none"> – Clean the air intakes on either side and clean the pre-filter. – Clean or change the filter.
<p>The fan strength is weak. The unit is not purifying the air.</p>	<ul style="list-style-type: none"> • Is the Check Filter indicator light on? <ul style="list-style-type: none"> – Change the filters as required.
<p>The display panel is dim.</p>	<ul style="list-style-type: none"> • Is the Light Sensor blocked by debris? <ul style="list-style-type: none"> – When Auto Mode is on, Sleep Mode is automatically activated when the Light Sensor detects that the room is dark.

FREQUENTLY ASKED QUESTIONS

When a Bluetooth connection is in use

Problem	Check / Actions to take
No sound is coming out.	<ul style="list-style-type: none">• Are the unit and device placed too far apart? Or is there interference from a wireless LAN, other 2.4 GHz wireless device, or microwave oven?<ul style="list-style-type: none">– Check the Bluetooth connection between the unit and the device.– Re-do the Bluetooth pairing between the unit and the device.– If you are pairing the unit with a PC, check whether the computer's output settings are set properly for the Bluetooth device.– Increase the volume of the device.– Check whether the audio source is actually playing from the device.
The audio output stops or drops out while music is playing.	<ul style="list-style-type: none">• Move the unit to a different spot if it is near any device that emits electromagnetic waves (e.g., a wireless LAN, another Bluetooth device, a microwave oven).<ul style="list-style-type: none">– If any obstacle stands between the unit and the device, remove it or shift the device away from the obstacle.– Move the unit or change the position of the device.
I am unable to pair the device with the unit.	<ul style="list-style-type: none">• Move the unit and Bluetooth audio device closer together.<ul style="list-style-type: none">– Make sure that pairing mode is activated.– If the Bluetooth signal is impeded by some obstruction such as a wall, the connection may be unstable or prone to disconnection. Move the unit and device closer together, or try plugging the power cord in again.

UNIT SPECIFICATIONS

Model Name	WINIX QS
Power Voltage	AC120V / 60Hz
Power Rate	55 W
Room Area Served	AHAM verified at 320 sq. ft.
Dimensions	12.2 in(W) x 12.2 in(D) x 29.5 in(H)
Weight	17 lbs
Replacement Filter	FILTER N / ITEM : 112180

※ The exterior, design, and product specifications may be changed without prior notice to improve product performance.

Warning: Change or modifications to this unit not expressly approved by the party responsible for compliance could void the user's authority to operate the equipment.

Note: This equipment has been tested and found to comply with the limits for a Class B digital device, pursuant to Part 15 of the FCC Rules. These limits are designed to provide reasonable protection against harmful interference in a residential installation. This equipment generates, uses and can radiate radio frequency energy and, if not installed and used in accordance with the instructions, and may cause harmful interference to radio communications. However, there is no guarantee that interference will not occur in a particular installation. If this equipment does cause harmful interference to radio or television reception, which can be determined by turning the equipment off and on, the user is encouraged to try to correct the interference by one or more of the following measures.

- Reorient or relocate the receiving antenna.
- Increase the separation between the equipment and receiver.
- Connect the equipment into an outlet on a circuit different from that to which the receiver is connected.
- Consult the dealer or on experienced radio/TV technician for help.

This device complies with Industry Canada's license-exempt RSSs. Operation is subject to the following two conditions:

- This device may not cause interference;
- This device must accept any interference, including interference that may cause undesired operation of the device.

SAFETY INSTRUCTIONS

Thank you for purchasing a Winix air purifier.
This product is for household use only.

IMPORTANT CAUTIONS FOR USING YOUR AIR PURIFIER

Warning: Follow the instructions in this manual to reduce the risk of electric shock, short circuit, and/or fire.

- Do not repair or modify the unit unless specifically recommended in this manual. All other repairs should be completed by a qualified technician.
- The plug for this unit is polarized with one blade wider than the other. Do not force the plug into an electrical outlet. Do not alter the plug in any way. If it does not fit into the outlet, reverse the plug. If it still does not fit, contact a qualified technician to install a proper outlet.
- Do not use if the power cord or plug is damaged or the connection to the wall outlet is loose.
- Use AC 120V only.
- Do not damage, break, forcefully bend, pull, twist, bundle, coat, pinch, or place heavy objects on the power cord.
- Periodically remove dust from the power plug. This will reduce the risk of shock due to humidity build up.
- If the power plug is damaged, it must be replaced by the manufacturer or a qualified technician.
- Remove the power plug from the outlet before cleaning the unit. When removing the power plug, grasp by holding the plug itself, never hold by the cord.
- Remove the power plug from the outlet when not in use.
- Do not handle the power plug with wet hands.
- Do not operate the unit when using indoor smoke-generating insecticides.
- Do not clean unit with benzene or paint thinner. Do not spray insecticides on the unit.
- Do not use the unit where it is humid or where the unit may become wet, such as the bathroom.
- Do not insert fingers or foreign objects into air intake or outlet.
- Do not use the unit near flammable gases. Do not use near cigarettes, incense, or other spark-creating items.
- Unit will not remove carbon monoxide emitted from heating appliances or other sources.

SAFETY INSTRUCTIONS

IMPORTANT PRECAUTIONS FOR USING YOUR AIR PURIFIER

- Do not block the intake or outlet vents.
- Do not use near hot objects, such as a stove.
- Do not use where the unit may come into contact with steam.
- Do not use the unit on its side.
- Keep away from products that generate oily residue, such as a deep fryer.
- Do not use detergent to clean the unit.
- Do not operate without a filter.
- Do not wash and reuse the filter.
- Hold the handle on the back of the unit to transport.
- Do not hold by the front panel.



WARNING

This product contains chemicals known to the State of California to cause cancer and birth defects or other reproductive harm.

FCC Information to User

This equipment has been tested and found to comply with the limits for a Class B digital device, pursuant to Part 15 of the FCC Rules. These limits are designed to provide reasonable protection against harmful interference in a residential installation. This equipment generates, uses and can radiate radio frequency energy and, if not installed and used in accordance with the instructions, may cause harmful interference to radio communications. However, there is no guarantee that interference will not occur in a particular installation. If this equipment does cause harmful interference to radio or television reception, which can be determined by turning the equipment off and on, the user is encouraged to try to correct the interference by one of the following measures:

- Reorient or relocate the receiving antenna.
- Increase the separation between the equipment and receiver.
- Connect the equipment into an outlet on a circuit different from that to which the receiver is connected.
- Consult the dealer or an experienced radio/TV technician for help.

Caution

Modifications not expressly approved by the party responsible for compliance could void the user's authority to operate the equipment.

FCC Compliance Information : This device complies with Part 15 of the FCC Rules. Operation is subject to the following two conditions: (1) This device may not cause harmful interference, and (2) this device must accept any interference received, including interference that may cause undesired operation

SPECIFICATIONS (Speaker, Bluetooth)

Speaker		
Category		Specifications
Speaker system	Full range	41 mm, 2 X 8W
	Passive radiator	-
Enclosure type		Dual passive radiator
Effective frequency range		90 Hz ~ 20 kHz
Impedance	Full range	4-ohm

Amplifier	
Rated output power	6 W/Channel

Wireless Bluetooth module	
Frequency range	2.4 GHz (2402 ~ 2480 MHz)
Max. transmission range	10 m
Compatible Bluetooth profiles	A2DP, AVRCP

PRODUCT WARRANTY

The terms of the warranty are as follows.

- ① This product is manufactured under stringent quality control and inspections.
- ② Warranty void if product failure is a result of negligence or misuse by the consumer, shipping and service fees may be incurred even during the warranty period.
- ③ The warranty must be presented upon bringing the product for service.
- ④ Store the warranty in a safe place, as it cannot be reissued.
- ⑤ This warranty is valid only in the USA and Canada.

Product Name	Air Purifier
Model Name	WINIX QS
Purchase Date	
Warranty period	Two (2) years
Place of purchase	
Place of purchase Tel.	
Customer	Address
	Name
	Tel.

※ After purchase, be sure to complete all of the above information.



Developed in partnership with
Drexel University
(Philadelphia, PA, USA)



Independently Tested.
Consumer Trusted.

2610-0061-13 Rev.00

Contact for product
related inquiries and
customer service

To expedite service, please specify the model name and number, the
nature of the problem, your contact information, and your address.

Dedicated Call Center : (877) 699-4649

Website : www.winixamerica.com