

FCC TEST REPORT

Client Name : Electronic Silk Road (Shenzhen) Tech Co., Ltd
Address : 7th F, Building 10B, Taihua Wutong Industrial Park, Gushu
Development Zones, Xixiang Street, Bao'an Area,
Shenzhen, China
Product Name : HaloLock 2-in-1 Magnetic Wireless Charger
Date : Feb. 01, 2021

Shenzhen Anbotek Compliance Laboratory Limited

Contents

1. General Information.....	4
1.1. Client Information.....	4
1.2. Description of Device (EUT).....	4
1.3. Auxiliary Equipment Used During Test.....	5
1.4. Description of Test Modes.....	5
1.5. Description Of Test Setup.....	6
1.6. Test Equipment List.....	7
1.7. Measurement Uncertainty.....	8
1.8. Description of Test Facility.....	8
2. Summary of Test Results.....	9
3. Conducted Emission Test.....	10
3.1. Test Standard and Limit.....	10
3.2. Test Setup.....	10
3.3. Test Procedure.....	10
3.4. Test Data.....	10
4. Radiation Spurious Emission.....	15
4.1. Test Standard and Limit.....	15
4.2. Test Setup.....	15
4.3. Test Procedure.....	16
4.4. Test Data.....	16
5. Antenna Requirement.....	21
5.1. Test Standard and Requirement.....	21
5.2. Antenna Connected Construction.....	21
APPENDIX I -- TEST SETUP PHOTOGRAPH.....	22
APPENDIX II -- EXTERNAL PHOTOGRAPH.....	24
APPENDIX III -- INTERNAL PHOTOGRAPH.....	28

TEST REPORT

Applicant : Electronic Silk Road (Shenzhen) Tech Co., Ltd
Manufacturer : Electronic Silk Road (Shenzhen) Tech Co., Ltd
Product Name : HaloLock 2-in-1 Magnetic Wireless Charger
Model No. : EFC0040
Trade Mark : ESR
Rating(s) : Input: DC 5V/3A, DC 9V/2A(via adapter input: 100-240V~, 50-60Hz, 0.5A Max)
: Wireless output 1: 5W/7.5W/10W
: Wireless output 2: 5W/7.5W/10W
: 2-in-1 Total power: 10W (MAX)
Test Standard(s) : **FCC Part15 Subpart C, Paragraph 15.209**
Test Method(s) : **ANSI C63.10: 2013**

The device described above is tested by Shenzhen Anbotek Compliance Laboratory Limited to determine the maximum emission levels emanating from the device and the severe levels of the device can endure and its performance criterion. The measurement results are contained in this test report and Shenzhen Anbotek Compliance Laboratory Limited is assumed full of responsibility for the accuracy and completeness of these measurements. Also, this report shows that the EUT (Equipment Under Test) is technically compliant with the FCC Part 15 Subpart C requirements.

This report applies to above tested sample only and shall not be reproduced in part without written approval of Shenzhen Anbotek Compliance Laboratory Limited.

Date of Receipt : Oct. 22, 2020
Date of Test : Oct. 22, 2020~Jan. 28, 2021

Prepared By

Yilia Zhong

(Engineer / Yilia Zhong)

Reviewer

Bibo Zhang

(Supervisor / Bibo Zhang)

Approved & Authorized Signer

Kingkong Jin

(Manager / Kingkong Jin)

1. General Information

1.1. Client Information

Applicant	:	Electronic Silk Road (Shenzhen) Tech Co., Ltd
Address	:	7th F,Building 10B,Taihua Wutong Industrial Park,Gushu Development Zones, Xixiang Street,Bao'an Area, Shenzhen, China
Manufacturer	:	Electronic Silk Road (Shenzhen) Tech Co., Ltd
Address	:	7th F,Building 10B,Taihua Wutong Industrial Park,Gushu Development Zones, Xixiang Street,Bao'an Area, Shenzhen, China
Factory	:	Electronic Silk Road (Shenzhen) Tech Co., Ltd
Address	:	7th F,Building 10B,Taihua Wutong Industrial Park,Gushu Development Zones, Xixiang Street,Bao'an Area, Shenzhen, China

1.2. Description of Device (EUT)

Product Name	:	HaloLock 2-in-1 Magnetic Wireless Charger	
Model No.	:	EFC0040	
Trade Mark	:	ESR	
Test Power Supply	:	AC 120V, 60Hz for adapter / AC 240V, 60Hz for adapter	
Test Sample No.	:	1-2-1(Normal Sample), 1-2-2(Engineering Sample)	
Product Description	:	Operation Frequency:	111-205KHz
		Modulation Type:	FSK
		Antenna Type:	Inductive loop coil Antenna
		Antenna Gain(Peak):	0 dBi
Remark: 1) For a more detailed features description, please refer to the manufacturer's specifications or the User's Manual.			

1.3. Auxiliary Equipment Used During Test

N/A	
-----	--

1.4. Description of Test Modes

To investigate the maximum EMI emission characteristics generates from EUT, the test system was pre-scanning tested base on the consideration of following EUT operation mode or test configuration mode which possible have effect on EMI emission level. Each of these EUT operation mode(s) or test configuration mode(s) mentioned above was evaluated respectively.

Pretest Mode	Description
Mode 1	Wireless Charging Mode

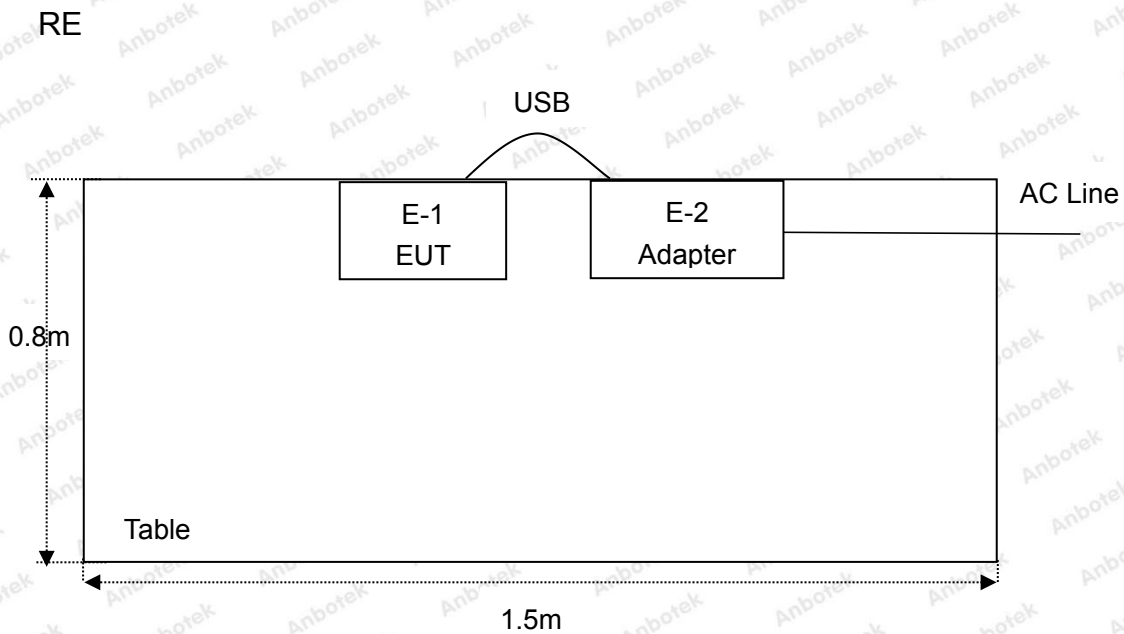
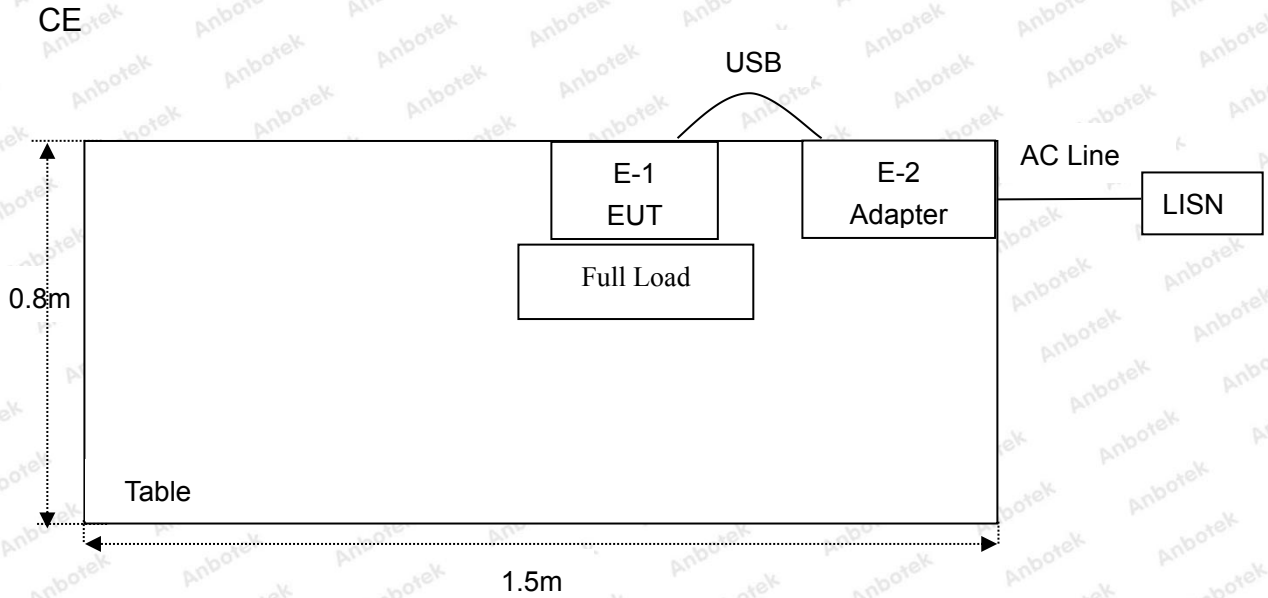
For Conducted Emission	
Final Test Mode	Description
Mode 1	Wireless Charging Mode

For Radiated Emission	
Final Test Mode	Description
Mode 1	Wireless Charging Mode

Note: (1)Test channel is 0.1249MHz.

(2) All antenna chains and All the situation(full load, half load and empty load) has been tested,only the worst situation (full load 10W (ANT1)) was recorded in the report.

1.5. Description Of Test Setup



1.6. Test Equipment List

Item	Equipment	Manufacturer	Model No.	Serial No.	Last Cal.	Cal. Interval
1.	L.I.S.N. Artificial Mains Network	Rohde & Schwarz	ENV216	100055	Oct. 26, 2020	1 Year
2.	EMI Test Receiver	Rohde & Schwarz	ESCI	100627	Oct. 26, 2020	1 Year
3.	EMI Test Receiver	Rohde & Schwarz	ESR26	101481	Oct. 26, 2020	1 Year
4.	RF Switching Unit	Compliance Direction	RSU-M2	38303	Oct. 26, 2020	1 Year
5.	MAX Spectrum Analysis	Agilent	N9020A	MY51170037	Oct. 26, 2020	1 Year
6.	Preamplifier	SKET Electronic	BK1G18G30 D	KD17503	Oct. 26, 2020	1 Year
7.	Double Ridged Horn Antenna	Instruments corporation	GTH-0118	351600	Nov. 02, 2020	2 Year
8.	Bilog Broadband Antenna	Schwarzbeck	VULB9163	VULB 9163-289	Nov. 02, 2020	2 Year
9.	Loop Antenna	Schwarzbeck	FMZB1519B	00053	Nov. 02, 2020	2 Year
10.	Horn Antenna	A-INFO	LB-180400-K F	J211060628	Nov. 02, 2020	2 Year
11.	Pre-amplifier	SONOMA	310N	186860	Oct. 26, 2020	1 Year
12.	EMI Test Software EZ-EMC	SHURPLE	N/A	N/A	N/A	N/A
13.	RF Test Control System	YIHENG	YH3000	2017430	Oct. 26, 2020	1 Year
14.	Power Sensor	DAER	RPR3006W	15100041SN045	Oct. 26, 2020	1 Year
15.	Power Sensor	DAER	RPR3006W	15100041SN046	Oct. 26, 2020	1 Year
16.	MXA Spectrum Analysis	Agilent	N9020A	MY51170037	Oct. 26, 2020	1 Year
17.	MXG RF Vector Signal Generator	Agilent	N5182A	MY48180656	Oct. 26, 2020	1 Year
18.	Signal Generator	Agilent	E4421B	MY41000743	Oct. 26, 2020	1 Year
19.	DC Power Supply	IVYTECH	IV3605	1804D360510	Oct. 26, 2020	1 Year
20.	Constant Temperature Humidity Chamber	ZHONGJIAN	ZJ-KHWS80 B	N/A	Oct. 26, 2020	1 Year

1.7. Measurement Uncertainty

Radiation Uncertainty	:	Ur = 3.9 dB (Horizontal)
		Ur = 3.8 dB (Vertical)
Conduction Uncertainty	:	Uc = 3.4 dB

1.8. Description of Test Facility

The test facility is recognized, certified, or accredited by the following organizations:

FCC-Registration No.: 184111

Shenzhen Anbotek Compliance Laboratory Limited, EMC Laboratory has been registered and fully described in a report filed with the (FCC) Federal Communications Commission. The acceptance letter from the FCC is maintained in our files. Registration No. 184111, September 30, 2020.

ISED-Registration No.: 8058A

Shenzhen Anbotek Compliance Laboratory Limited, EMC Laboratory has been registered and fully described in a report filed with the (ISED) Innovation, Science and Economic Development Canada. The acceptance letter from the ISED is maintained in our files. Registration 8058A, September 30, 2020.

Test Location

Shenzhen Anbotek Compliance Laboratory Limited.

1/F, Building D, Sogood Science and Technology Park, Sanwei community, Hangcheng Street, Bao'an District, Shenzhen, Guangdong, China.518102

2. Summary of Test Results

Standard Section	Test Item	Result
FCC Part 15, Paragraph 15.207	Conducted Emission Test	PASS
FCC Part 15, Paragraph 15.209(a)(f)	Spurious Emission	PASS
Part 15.203	Antenna Requirement	PASS

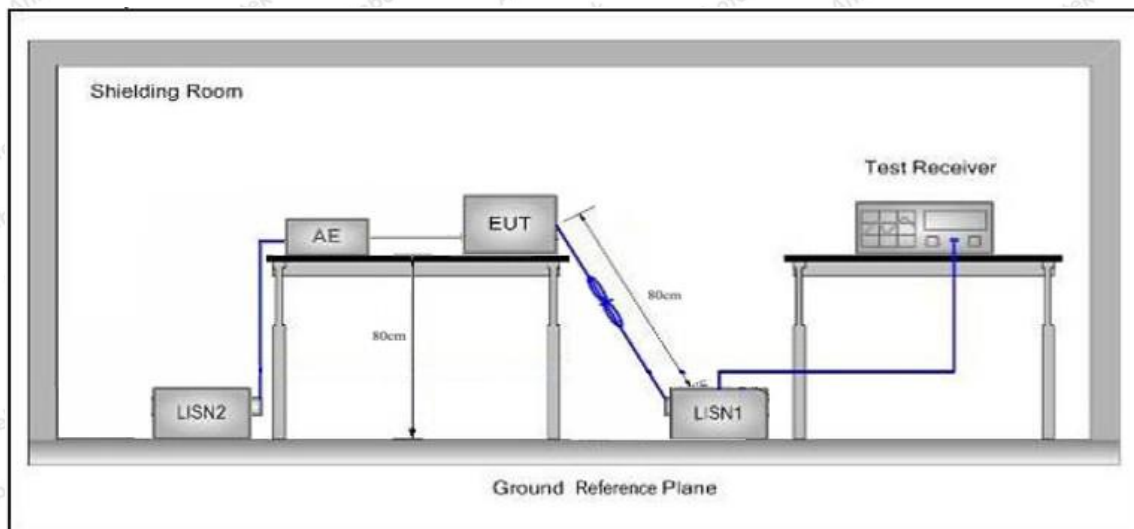
3. Conducted Emission Test

3.1. Test Standard and Limit

Test Standard	FCC Part15 Section 15.207		
Test Limit	Frequency	Maximum RF Line Voltage (dBuV)	
		Quasi-peak Level	Average Level
	150kHz~500kHz	66 ~ 56 *	56 ~ 46 *
	500kHz~5MHz	56	46
5MHz~30MHz	60	50	

Remark: (1) *Decreasing linearly with logarithm of the frequency.
 (2) The lower limit shall apply at the transition frequency.

3.2. Test Setup



3.3. Test Procedure

The EUT system is connected to the power mains through a line impedance stabilization network (L.I.S.N.). This provides a 50ohm coupling impedance for the EUT system. Please refer the block diagram of the test setup and photographs. Both sides of AC line are checked to find out the maximum conducted emission. In order to find the maximum emission levels, the relative positions of equipment and all of the interface cables shall be changed according to FCC ANSI C63.10-2013 on Conducted Emission Measurement.

The bandwidth of test receiver (ESCI) set at 9kHz.

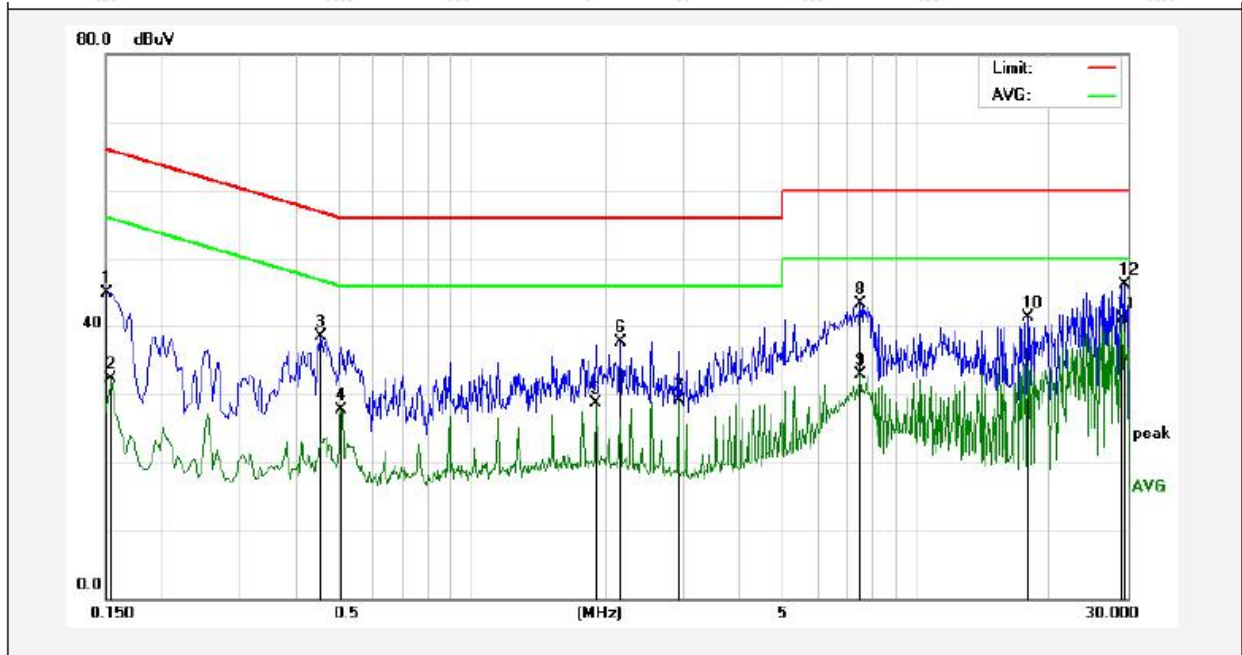
The frequency range from 150kHz to 30MHz is checked.

3.4. Test Data

Please to see the following pages

Conducted Emission Test Data

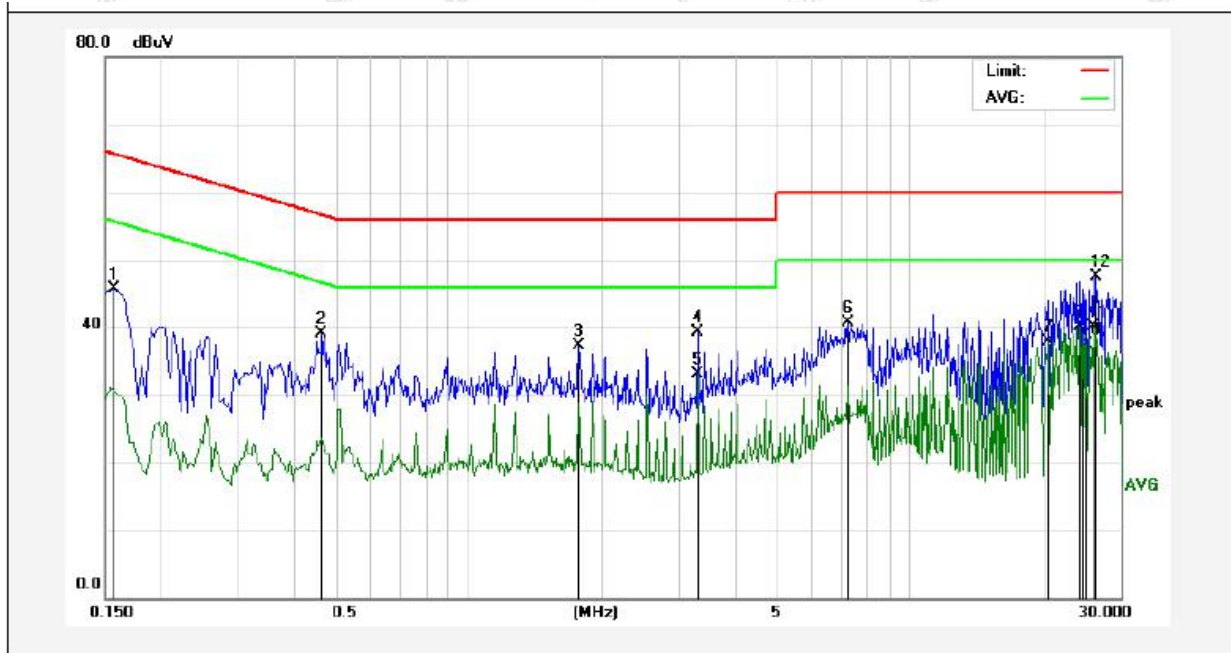
Test Site: 1# Shielded Room
 Operating Condition: Mode 1
 Test Specification: AC 120V, 60Hz for adapter
 Comment: Live Line
 Tem.: 22.3°C Hum.: 50%



No.	Freq. (MHz)	Reading (dBuV)	Factor (dB)	Result (dBuV)	Limit (dBuV)	Over Limit (dB)	Detector	Remark
1	0.1500	25.02	19.90	44.92	65.99	-21.07	QP	
2	0.1539	12.31	19.90	32.21	55.78	-23.57	AVG	
3	0.4580	18.60	19.96	38.56	56.73	-18.17	QP	
4	0.5100	7.67	19.98	27.65	46.00	-18.35	AVG	
5	1.9060	8.66	20.14	28.80	46.00	-17.20	AVG	
6	2.1580	17.49	20.14	37.63	56.00	-18.37	QP	
7	2.9219	8.95	20.16	29.11	46.00	-16.89	AVG	
8	7.4900	23.09	20.27	43.36	60.00	-16.64	QP	
9	7.4900	12.57	20.27	32.84	50.00	-17.16	AVG	
10	17.9060	21.00	20.31	41.31	60.00	-18.69	QP	
11	29.2060	20.75	20.27	41.02	50.00	-8.98	AVG	
12	29.4620	25.87	20.27	46.14	60.00	-13.86	QP	

Conducted Emission Test Data

Test Site: 1# Shielded Room
 Operating Condition: Mode 1
 Test Specification: AC 120V, 60Hz for adapter
 Comment: Neutral Line
 Tem.: 22.3°C Hum.: 50%

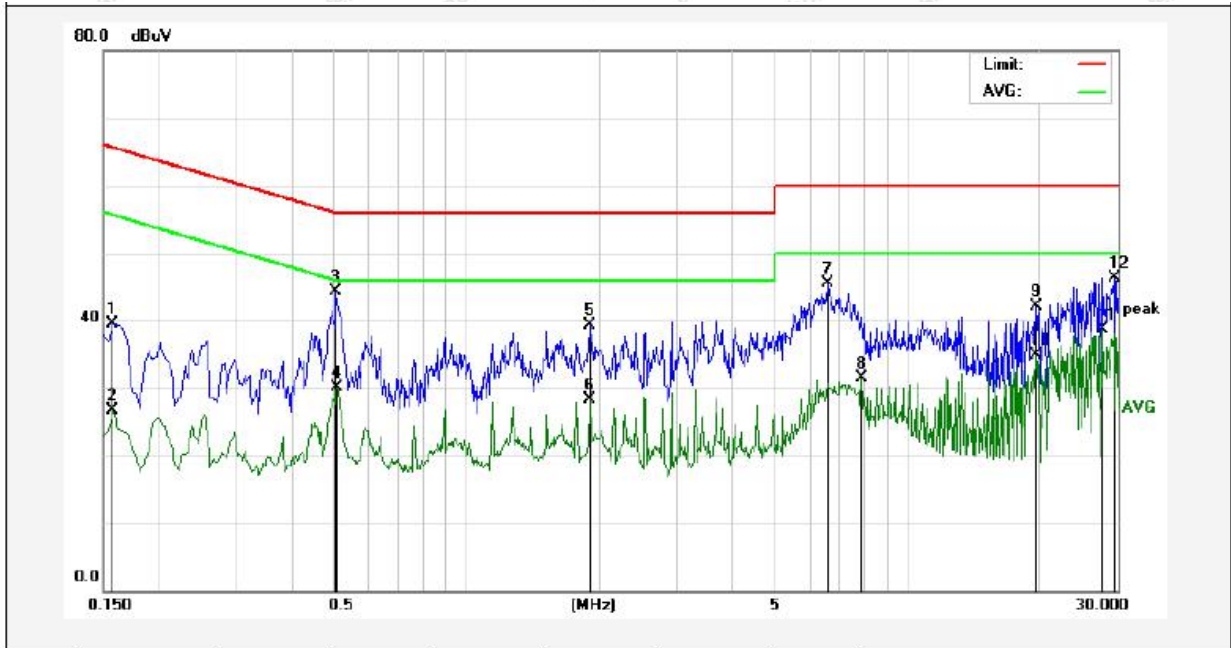


No.	Freq. (MHz)	Reading (dBuV)	Factor (dB)	Result (dBuV)	Limit (dBuV)	Over Limit (dB)	Detector	Remark
1	0.1580	25.73	19.90	45.63	65.56	-19.93	QP	
2	0.4660	19.10	19.96	39.06	56.58	-17.52	QP	
3	1.7780	17.21	20.14	37.35	56.00	-18.65	QP	
4	3.3020	19.16	20.17	39.33	56.00	-16.67	QP	
5	3.3020	13.01	20.17	33.18	46.00	-12.82	AVG	
6	7.2380	20.47	20.27	40.74	60.00	-19.26	QP	
7	20.6980	17.61	20.33	37.94	50.00	-12.06	AVG	
8	24.2540	19.81	20.29	40.10	50.00	-9.90	AVG	
9	24.6340	18.78	20.28	39.06	50.00	-10.94	AVG	
10	25.1420	17.28	20.28	37.56	50.00	-12.44	AVG	
11	25.9060	19.91	20.28	40.19	50.00	-9.81	AVG	
12	26.2860	27.16	20.28	47.44	60.00	-12.56	QP	

Note: All antenna chains has been tested, only the worst situation (ANT1) was recorded in the report.

Conducted Emission Test Data

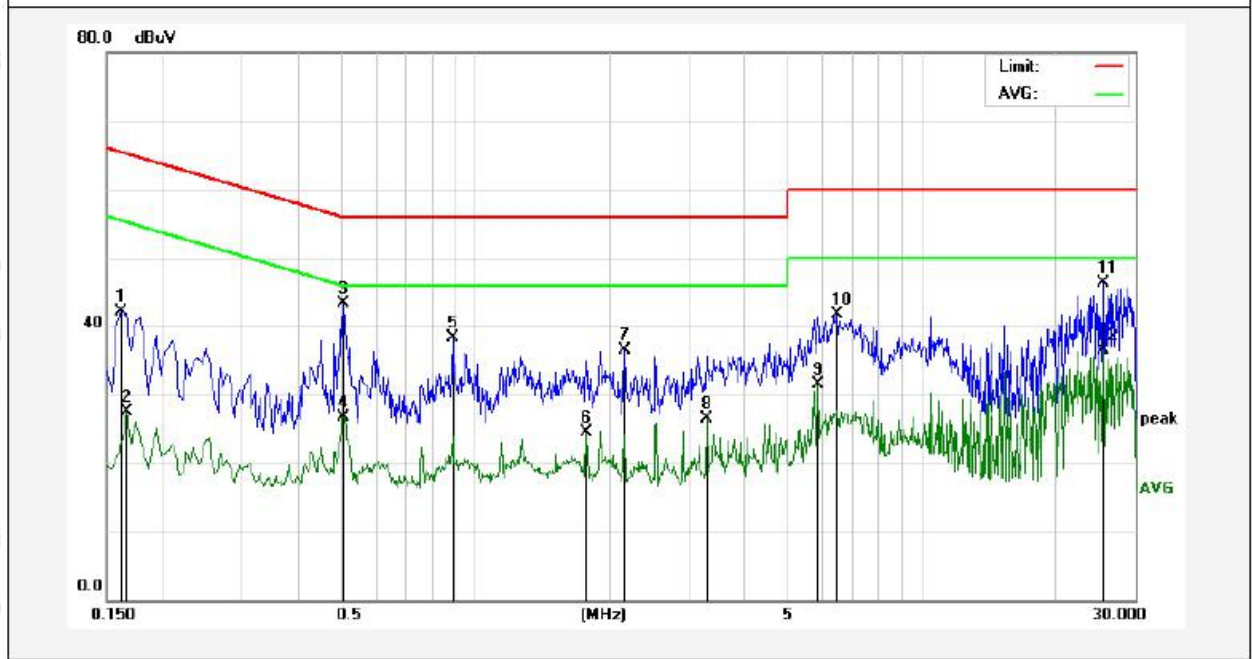
Test Site: 1# Shielded Room
 Operating Condition: Mode 1
 Test Specification: AC 240V, 60Hz for adapter
 Comment: Live Line
 Tem.: 22.3°C Hum.: 50%



No.	Freq. (MHz)	Reading (dBuV)	Factor (dB)	Result (dBuV)	Limit (dBuV)	Over Limit (dB)	Detector	Remark
1	0.1580	19.69	19.90	39.59	65.56	-25.97	QP	
2	0.1580	6.73	19.90	26.63	55.56	-28.93	AVG	
3	0.5060	24.29	19.98	44.27	56.00	-11.73	QP	
4	0.5100	10.13	19.98	30.11	46.00	-15.89	AVG	
5	1.9060	19.07	20.14	39.21	56.00	-16.79	QP	
6	1.9060	8.13	20.14	28.27	46.00	-17.73	AVG	
7	6.6060	25.20	20.25	45.45	60.00	-14.55	QP	
8	7.8740	11.21	20.28	31.49	50.00	-18.51	AVG	
9	19.5540	21.74	20.33	42.07	60.00	-17.93	QP	
10	19.5540	14.56	20.33	34.89	50.00	-15.11	AVG	
11	27.8100	18.49	20.27	38.76	50.00	-11.24	AVG	
12	29.4620	26.13	20.27	46.40	60.00	-13.60	QP	

Conducted Emission Test Data

Test Site: 1# Shielded Room
 Operating Condition: Mode 1
 Test Specification: AC 240V, 60Hz for adapter
 Comment: Neutral Line
 Tem.: 22.3°C Hum.: 50%



No.	Freq. (MHz)	Reading (dBuV)	Factor (dB)	Result (dBuV)	Limit (dBuV)	Over Limit (dB)	Detector	Remark
1	0.1620	22.22	19.90	42.12	65.36	-23.24	QP	
2	0.1660	7.53	19.90	27.43	55.15	-27.72	AVG	
3	0.5100	23.26	19.98	43.24	56.00	-12.76	QP	
4	0.5100	6.75	19.98	26.73	46.00	-19.27	AVG	
5	0.8900	18.19	20.09	38.28	56.00	-17.72	QP	
6	1.7780	4.37	20.14	24.51	46.00	-21.49	AVG	
7	2.1580	16.32	20.14	36.46	56.00	-19.54	QP	
8	3.3020	6.36	20.17	26.53	46.00	-19.47	AVG	
9	5.8420	11.35	20.23	31.58	50.00	-18.42	AVG	
10	6.4780	21.52	20.25	41.77	60.00	-18.23	QP	
11	25.3980	26.00	20.28	46.28	60.00	-13.72	QP	
12	25.3980	16.28	20.28	36.56	50.00	-13.44	AVG	

Note: All antenna chains has been tested, only the worst situation (ANT1) was recorded in the report.

4. Radiation Spurious Emission

4.1. Test Standard and Limit

Test Standard	FCC Part15 C Section 15.209				
Test Limit	Frequency (MHz)	Field strength (microvolt/meter)	Limit (dBuV/m)	Remark	Measurement distance (m)
	0.009MHz~0.490MHz	2400/F(kHz)	-	-	300
	0.490MHz-1.705MHz	24000/F(kHz)	-	-	30
	1.705MHz-30MHz	30	-	-	30
	30MHz~88MHz	100	40.0	Quasi-peak	3
	88MHz~216MHz	150	43.5	Quasi-peak	3
	216MHz~960MHz	200	46.0	Quasi-peak	3
	960MHz~1000MHz	500	54.0	Quasi-peak	3
	Above 1000MHz	500	54.0	Average	3
-		74.0	Peak	3	

Remark:

(1)The lower limit shall apply at the transition frequency.

(2) 15.35(b), Unless otherwise specified, the limit on peak radio frequency emissions is 20dB above the maximum permitted average emission limit applicable to the equipment under test. This peak limit applies to the total peak emission level radiated by the device.

4.2. Test Setup

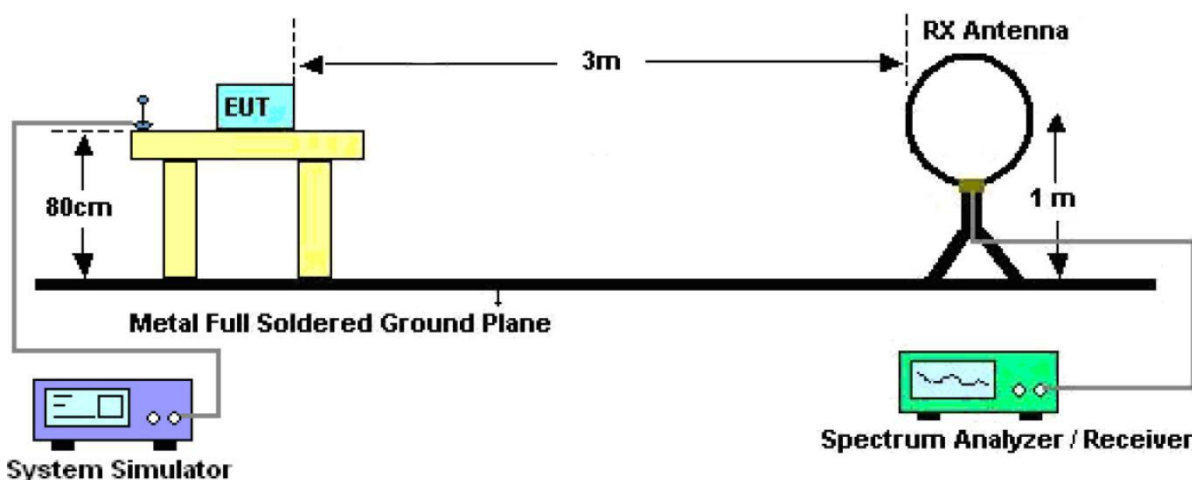


Figure 1. Below 30MHz

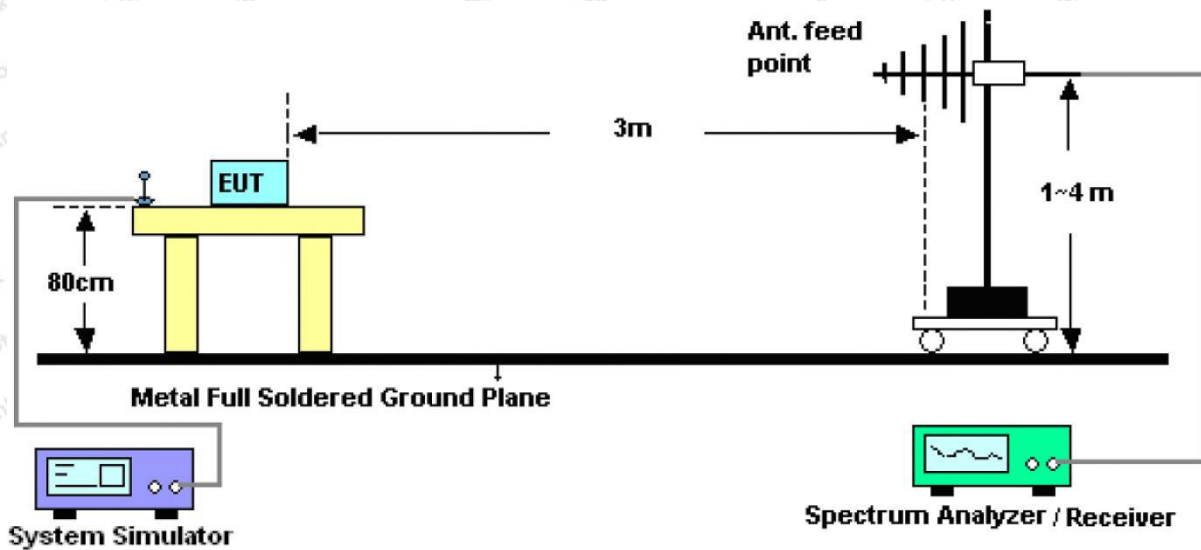


Figure 2. 30MHz to 1GHz

4.3. Test Procedure

For below 1GHz: The EUT is placed on a turntable, which is 0.8m above the ground plane.

The turn table can rotate 360 degrees to determine the position of the maximum emission level. The EUT is set 3 meters away from the receiving antenna which is mounted on an antenna tower. The antenna can be moved up and down from 1 to 4 meters to find out the maximum emission level. Rotated the EUT through three orthogonal axes to determine the maximum emissions, both horizontal and vertical polarization of the antenna are set on test. The EUT is tested in 9*6*6 Chamber. The device is evaluated in xyz orientation.

For 9kHz to 150kHz, Set the spectrum analyzer as:

RBW = 200Hz, VBW = 1kHz, Detector = Quasi-Peak, Trace mode = Max hold, Sweep = auto couple.

For 150kHz to 30MHz, Set the spectrum analyzer as:

RBW = 9kHz, VBW = 30kHz, Detector = Quasi-Peak, Trace mode = Max hold, Sweep = auto couple.

For 30MHz to 1000MHz, Set the spectrum analyzer as:

RBW = 100kHz, VBW = 300kHz, Detector = Quasi-Peak, Trace mode = Max hold, Sweep = auto couple.

4.4. Test Data

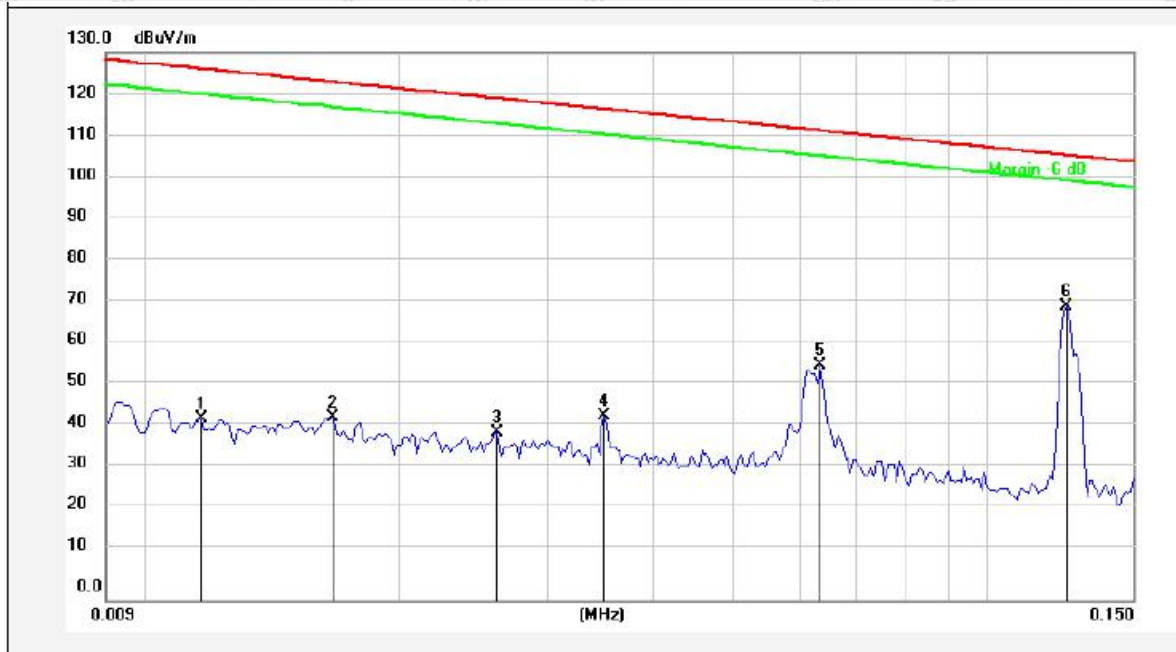
PASS

Note: The data is in TX mode, and this is the worst mode.

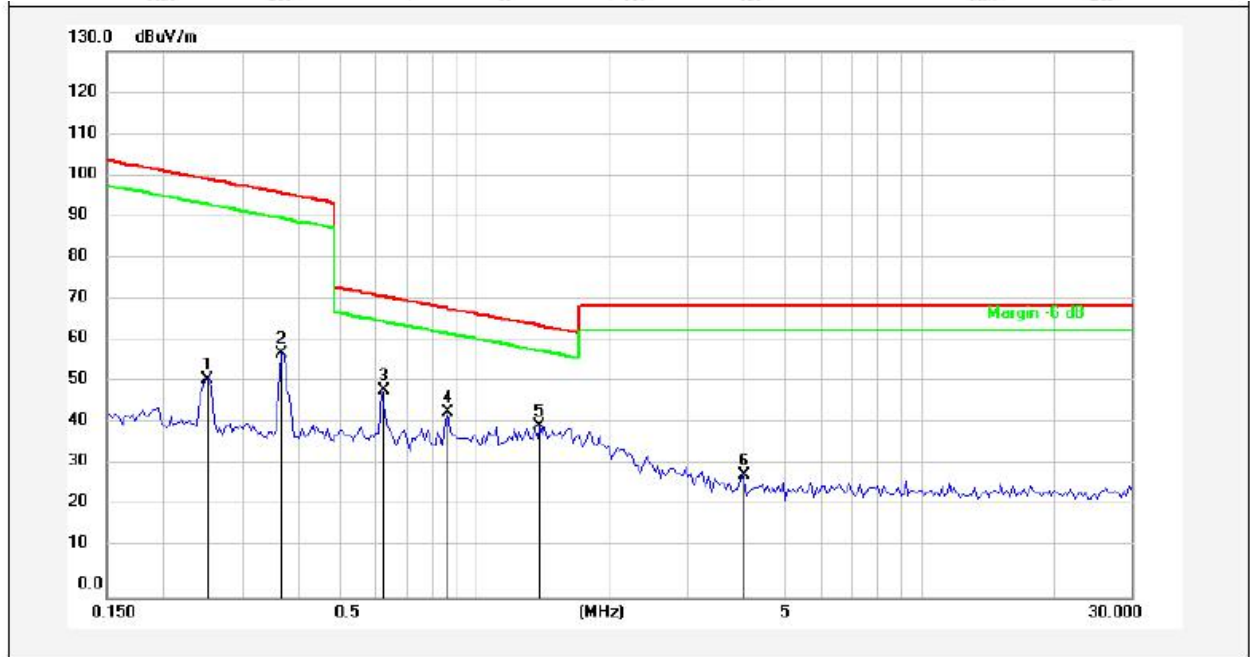
Test Results

(Between 9KHz – 30MHz)

Standard: FCC PART15 C _3m **Power Source:** AC 120V, 60Hz for adapter
Test item: Radiation Test **Temp.(C)/Hum.(%RH):** 22.1°C/50%RH
Test Mode: Mode 1 **Distance:** 3m



No.	Freq. (MHz)	Reading (dBuV)	Factor ()	Result (dBuV/m)	Limit (dBuV/m)	Over Limit (dB)	Detector	Height (cm)	degree (deg)	Remark
1	0.0116	23.01	20.09	43.10	126.12	-83.02	AV			
2	0.0167	23.29	20.19	43.48	122.97	-79.49	AV			
3	0.0262	19.51	20.39	39.90	119.08	-79.18	AV			
4	0.0352	23.39	20.48	43.87	116.53	-72.66	AV			
5	0.0636	35.26	20.38	55.64	111.43	-55.79	AV			
6	0.1249	49.29	20.33	69.62	105.60	-35.98	AV			



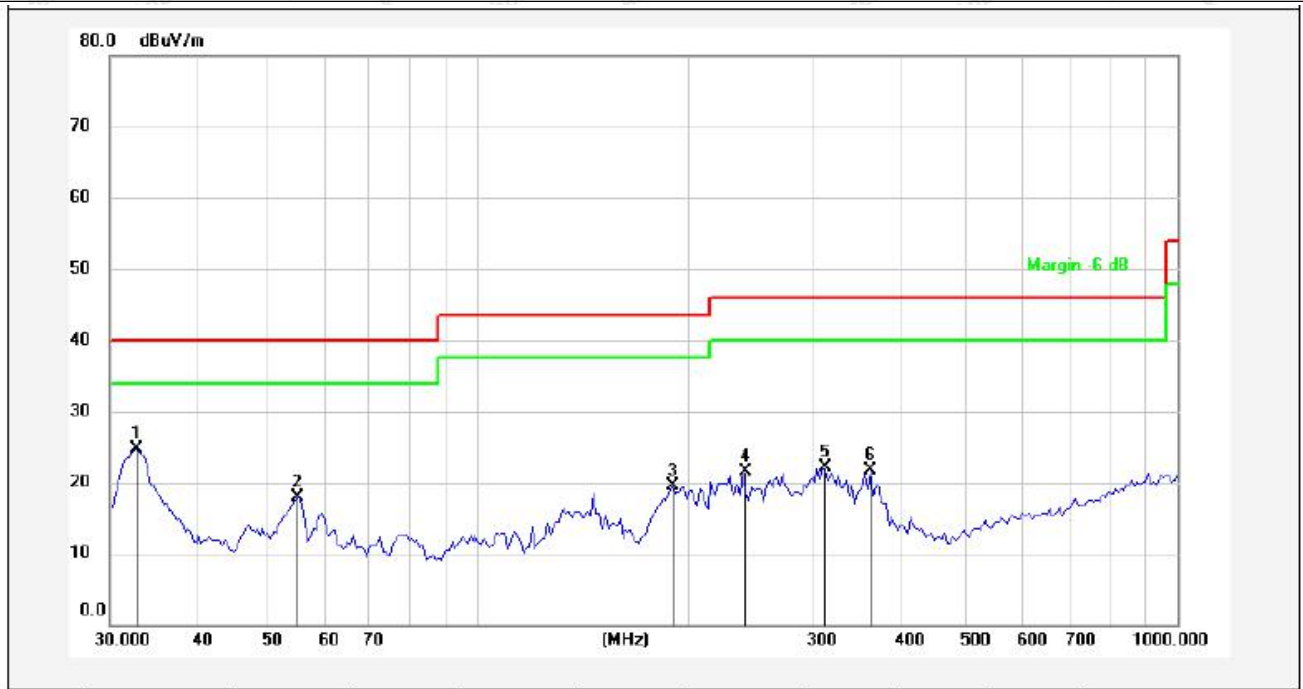
No.	Freq. (MHz)	Reading (dBuV)	Factor ()	Result (dBuV/m)	Limit (dBuV/m)	Over Limit (dB)	Detector	Height (cm)	degree (deg)	Remark
1	0.2514	31.69	20.30	51.99	99.56	-47.57	AV			
2	0.3692	37.74	20.28	58.02	96.24	-38.22	AV			
3	0.6189	28.89	20.27	49.16	71.78	-22.62	QP			
4	0.8733	23.62	20.26	43.88	68.79	-24.91	QP			
5	1.4069	20.58	20.27	40.85	64.66	-23.81	QP			
6	4.0062	8.68	20.36	29.04	69.50	-40.46	QP			

Remark: According to FCC PART 15.209 (d), the emission limits for the frequency bands 9–90 kHz, 110–490 kHz and above 1000 MHz, Radiated emission limits in these three bands are based on measurements employing an average detector.

Note: All antenna chains has been tested, only the worst situation (ANT1) was recorded in the report.

(Between 30MHz –1000 MHz)

Standard:	FCC PART15 C _3m	Polarization:	Horizontal
Test item:	Radiation Test	Power Source:	AC 120V, 60Hz for adapter
Test Mode:	Mode 1	Temp.(C)/Hum.(%RH):	23.1°C/50%RH
Distance:	3m		



No.	Freq. (MHz)	Reading (dBuV)	Factor ()	Result (dBuV/m)	Limit (dBuV/m)	Over Limit (dB)	Detector	Height (cm)	degree (deg)	Remark
1	32.7486	41.56	-16.84	24.72	40.00	-15.28	QP	100	360	
2	55.4147	34.05	-16.14	17.91	40.00	-22.09	QP	100	0	
3	190.7390	37.40	-17.86	19.54	43.50	-23.96	QP	100	360	
4	239.5670	37.74	-16.22	21.52	46.00	-24.48	QP	100	0	
5	311.6326	39.07	-16.92	22.15	46.00	-23.85	QP	100	360	
6	364.8987	37.05	-15.41	21.64	46.00	-24.36	QP	100	0	

Standard:	FCC PART15 C _3m	Polarization:	Vertical
Test item:	Radiation Test	Power Source:	AC 120V, 60Hz for adapter
Test Mode:	Mode 1	Temp.(C)/Hum.(%RH):	23.1°C/50%RH
Distance:	3m		



No.	Freq. (MHz)	Reading (dBuV)	Factor ()	Result (dBuV/m)	Limit (dBuV/m)	Over Limit (dB)	Detector	Height (cm)	degree (deg)	Remark
1	32.7486	56.26	-16.84	39.42	40.00	-0.58	QP	100	360	
2	54.4515	46.74	-16.09	30.65	40.00	-9.35	QP	100	0	
3	113.7142	45.84	-17.20	28.64	43.50	-14.86	QP	100	360	
4	145.3505	49.09	-20.41	28.68	43.50	-14.82	QP	100	0	
5	239.5670	39.15	-16.22	22.93	46.00	-23.07	QP	100	360	
6	314.3765	39.21	-16.88	22.33	46.00	-23.67	QP	100	0	

Note: All antenna chains has been tested, only the worst situation (ANT1) was recorded in the report.

5. Antenna Requirement

5.1. Test Standard and Requirement

Test Standard	FCC Part15 Section 15.203
Requirement	An intentional radiator shall be designed to ensure that no antenna other than that furnished by the responsible party shall be used with the device. The use of a permanently attached antenna or of an antenna that uses a unique coupling to the intentional radiator, the manufacturer may design the unit so that a broken antenna can be replaced by the user, but the use of a standard antenna jack or electrical connector is prohibited.

5.2. Antenna Connected Construction

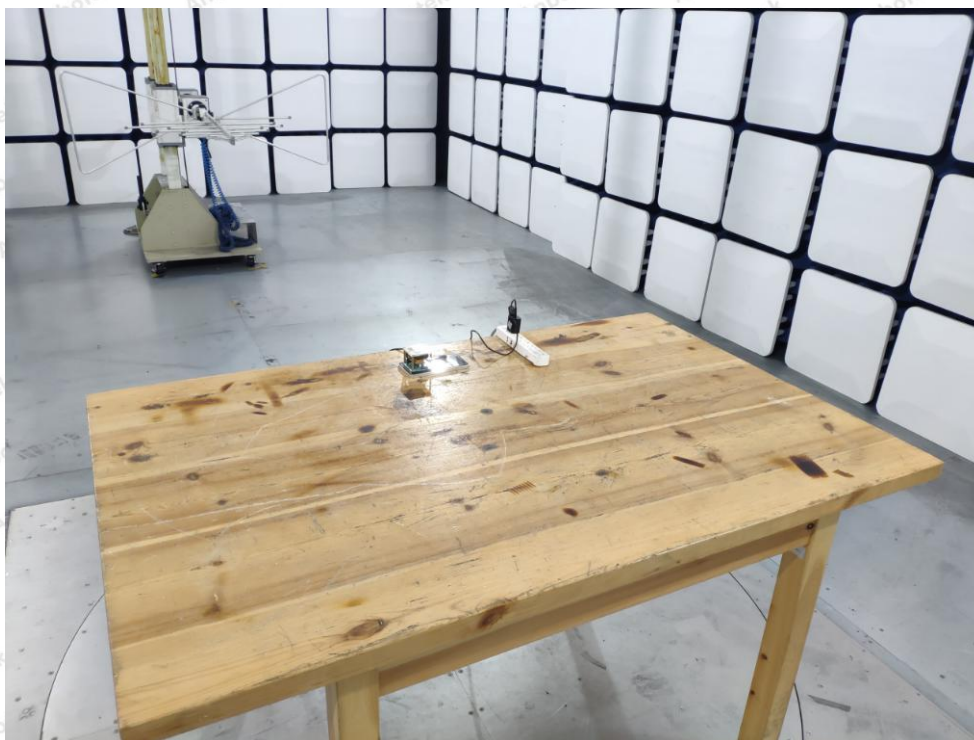
The antenna is a Inductive loop coil Antenna which permanently attached, and the best case gain of the antenna is 0 dBi. It complies with the standard requirement.

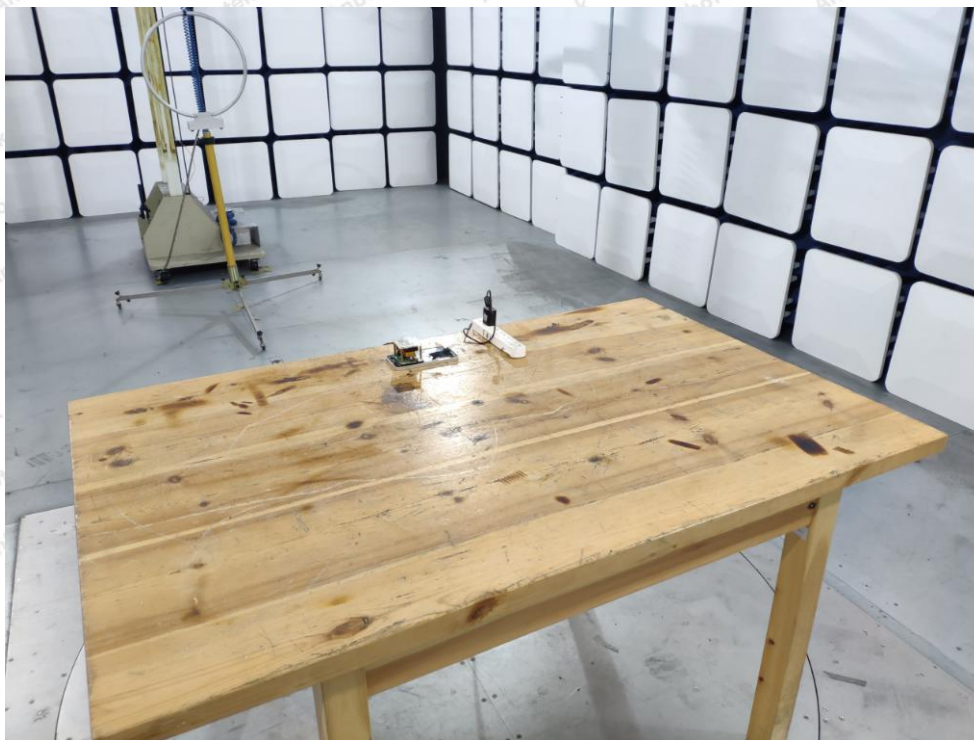
APPENDIX I -- TEST SETUP PHOTOGRAPH

Photo of Conducted Emission Measurement



Photo of Radiation Emission Test

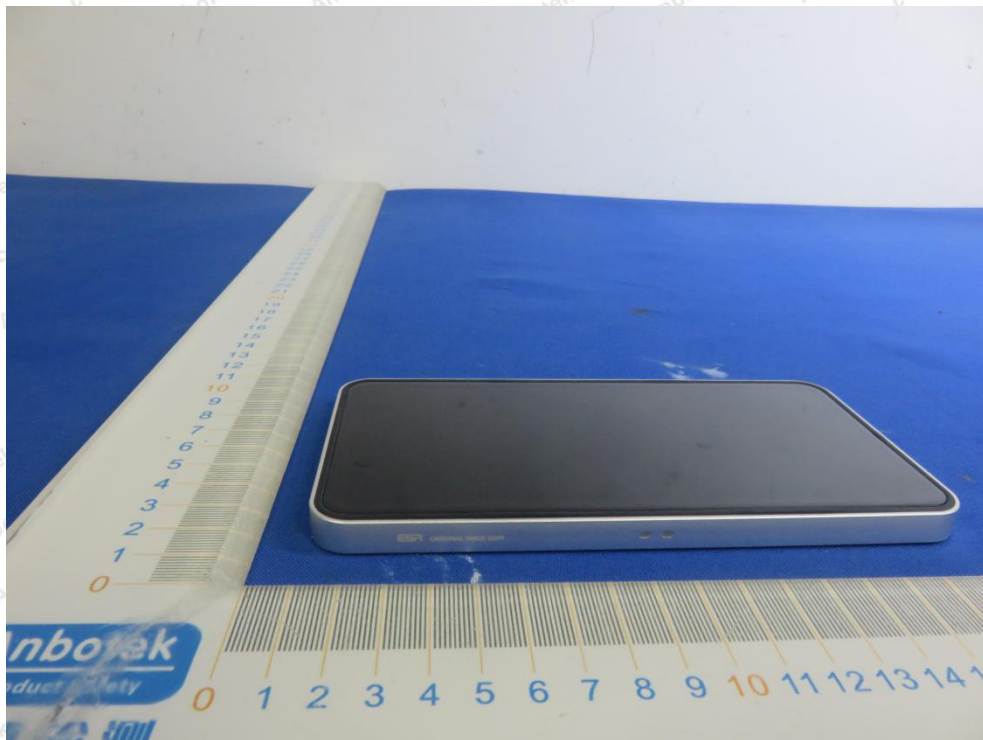




APPENDIX II -- EXTERNAL PHOTOGRAPH

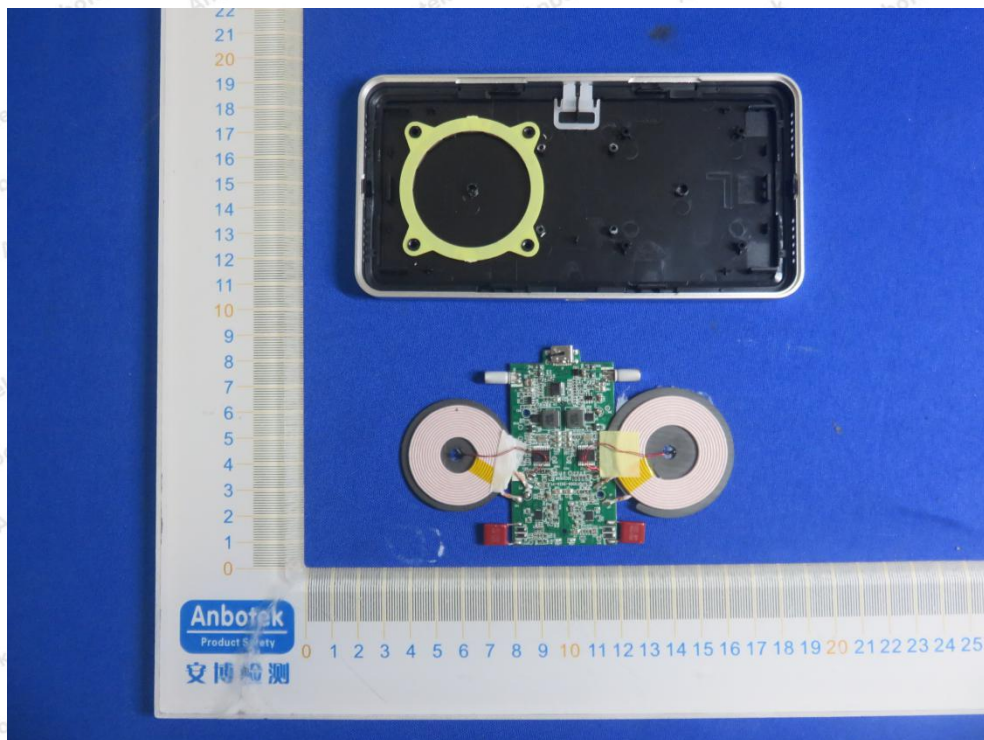
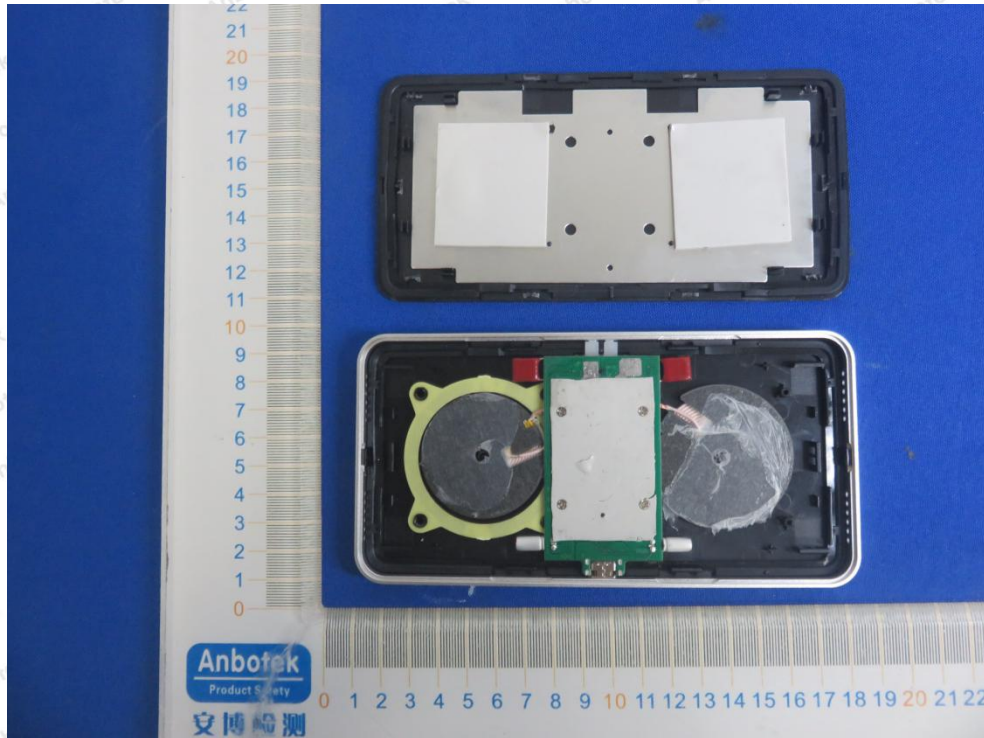


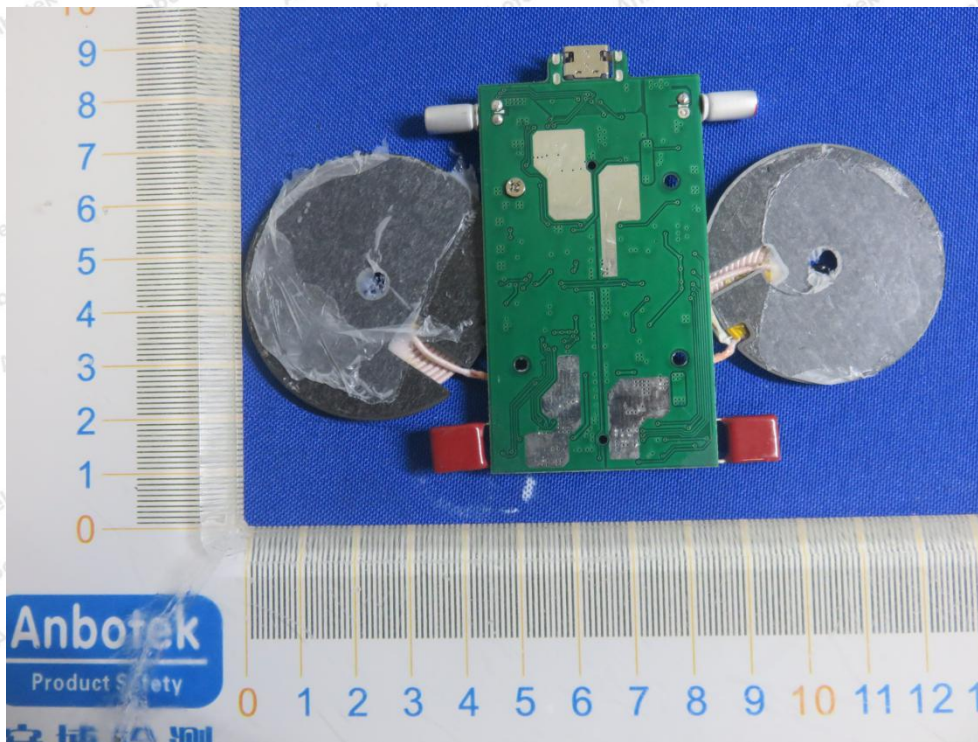
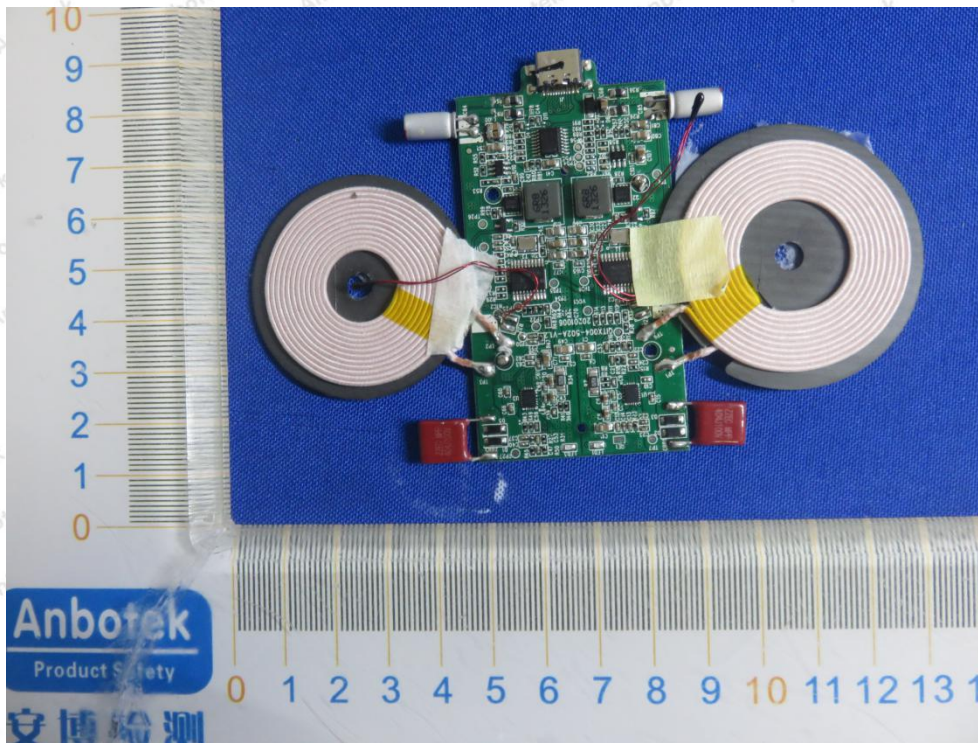


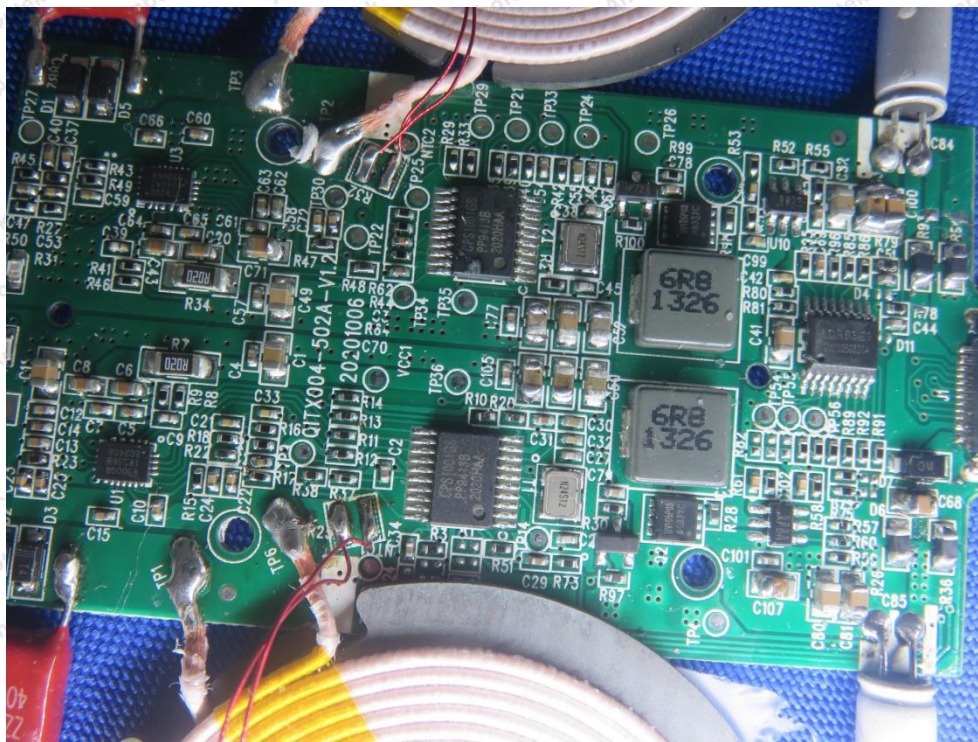




APPENDIX III -- INTERNAL PHOTOGRAPH







----- End of Report -----