

# TEST REPORT

**FCC ID: 2APESCDRZ21**

**Product: Wireless Charger**

**Model No.: CDRZ21**

**Additional Model No.: N/A**

**Trade Mark: Andobil**

**Report No.: TCT180425E902**

**Issued Date: Apr. 26, 2018**

Issued for:

**Shenzhen Andobil Technology Co., Ltd.  
322, Bldg.7, Pengsheng Village, No.39 Bagua 1 Rd., Pengsheng  
CMNY, Yuanling St Futian Dist., shenzhen, China**

Issued By:

**Shenzhen Tongce Testing Lab.  
1B/F., Building 1, Yibaolai Industrial Park, Qiaotou, Fuyong, Baoan District,  
Shenzhen, Guangdong, China  
TEL: +86-755-27673339  
FAX: +86-755-27673332**

**Note:** This report shall not be reproduced except in full, without the written approval of Shenzhen Tongce Testing Lab.

This document may be altered or revised by Shenzhen Tongce Testing Lab. personnel only, and shall be noted in the revision section of the document. The test results in the report only apply to the tested sample.

**TABLE OF CONTENTS**

**1. Test Certification ..... 3**

**2. Test Result Summary ..... 4**

**3. EUT Description..... 5**

**4. Genera Information..... 6**

    4.1. Test environment and mode .....6

    4.2. Description of Support Units .....6

**5. Facilities and Accreditations ..... 7**

    5.1. Facilities .....7

    5.2. Location .....7

    5.3. Measurement Uncertainty .....7

**6. Test Results and Measurement Data..... 8**

    6.1. Antenna requirement .....8

    6.2. Conducted Emission .....9

    6.3. Radiated Spurious Emission Measurement.....13

**Appendix A: Photographs of Test Setup**

**Appendix B: Photographs of EUT**

## 1. Test Certification

<b>Product:</b>	Wireless Charger
<b>Model No.:</b>	CDRZ21
<b>Additional Model No.:</b>	N/A
<b>Trade Mark:</b>	<b>Andobil</b>
<b>Applicant:</b>	Shenzhen Andobil Technology Co., Ltd.
<b>Address:</b>	322, Bldg.7, Pengsheng Village, No.39 Bagua 1 Rd., Pengsheng CMNY, Yuanling St Futian Dist., shenzhen, China
<b>Manufacturer:</b>	Shenzhen Andobil Technology Co., Ltd.
<b>Address:</b>	322, Bldg.7, Pengsheng Village, No.39 Bagua 1 Rd., Pengsheng CMNY, Yuanling St Futian Dist., shenzhen, China
<b>Date of Test:</b>	Nov. 09 – 13, 2017
<b>Applicable Standards:</b>	FCC CFR Title 47 Part 15 Subpart C

The above equipment has been tested by Shenzhen Tongce Testing Lab. and found compliance with the requirements set forth in the technical standards mentioned above. The results of testing in this report apply only to the product/system, which was tested. Other similar equipment will not necessarily produce the same results due to production tolerance and measurement uncertainties.

Tested By:



Date:

Nov. 13, 2017

---

**Brews Xu**

Reviewed By:



Date:

Apr. 26, 2018

---

**Joe Zhou**

Approved By:



Date:

Apr. 26, 2018

---

**Tomsin**

## 2. Test Result Summary

Requirement	CFR 47 Section	Result
Antenna requirement	§15.203	PASS
AC Power Line Conducted Emission	§15.207	PASS
Spurious Emission	§15.209(a)(f)	PASS

**Note:**

1. PASS: Test item meets the requirement.
2. Fail: Test item does not meet the requirement.
3. N/A: Test case does not apply to the test object.
4. The test result judgment is decided by the limit of test standard.

### 3. EUT Description

<b>Product:</b>	Wireless Charger
<b>Model No.:</b>	CDRZ21
<b>Additional Model No.:</b>	N/A
<b>Trade Mark:</b>	<b>Andobil</b>
<b>Operation Frequency:</b>	110-205KHz
<b>Number of Channel:</b>	20 Channels
<b>Modulation Technology:</b>	MSK
<b>Antenna Type:</b>	Inductive loop coil Antenna
<b>Antenna Gain:</b>	0dBi

#### Operation Frequency each of channel

Channel	Frequency (MHz)	Channel	Frequency (MHz)	Channel	Frequency (MHz)	Channel	Frequency (MHz)
1	0.110	6	0.135	11	0.160	16	0.185
2	0.115	7	0.140	12	0.165	17	0.190
3	0.120	8	0.145	13	0.170	18	0.195
4	0.125	9	0.150	14	0.175	19	0.200
5	0.130	10	0.155	15	0.180	20	0.205

## 4. Genera Information

### 4.1. Test environment and mode

Operating Environment:	
Temperature:	25.0 °C
Humidity:	56 % RH
Atmospheric Pressure:	1010 mbar
Test Mode:	
Engineering mode:	Keep the EUT in continuous transmitting by select channel and modulations(The value of duty cycle is 98.46%) with Fully-charged battery.
<p>The sample was placed (0.1m below 1GHz, 1.5m above 1GHz) above the ground plane of 3m chamber. Measurements in both horizontal and vertical polarities were performed. During the test, each emission was maximized by: having the EUT continuously working, investigated all operating modes, rotated about all 3 axis (X, Y &amp; Z) and considered typical configuration to obtain worst position, manipulating interconnecting cables, rotating the turntable, varying antenna height from 1m to 4m in both horizontal and vertical polarizations. The emissions worst-case are shown in Test Results of the following pages.</p>	

### 4.2. Description of Support Units

The EUT has been tested as an independent unit together with other necessary accessories or support units. The following support units or accessories were used to form a representative test configuration during the tests.

Equipment	Model No.	Serial No.	FCC ID	Trade Name
Adapter	HW-059200CHQ	K68247F5H01734	/	HUAWEI
Mobilephone	honor 9	5JPDU17610004560	/	honor

**Note:**

1. All the equipment/cables were placed in the worst-case configuration to maximize the emission during the test.
2. Grounding was established in accordance with the manufacturer's requirements and conditions for the intended use.
3. For conducted measurements (Output Power, 6dB Emission Bandwidth, Power Spectral Density, Spurious Emissions), the antenna of EUT is connected to the test equipment via temporary antenna connector, the antenna connector is soldered on the antenna port of EUT, and the temporary antenna connector is listed in the Test Instruments.

## 5. Facilities and Accreditations

### 5.1. Facilities

The test facility is recognized, certified, or accredited by the following organizations:

- FCC - Registration No.: 645098

Shenzhen Tongce Testing Lab

The 3m Semi-anechoic chamber has been registered and fully described in a report with the (FCC) Federal Communications Commission. The acceptance letter from the FCC is maintained in our files.

- IC - Registration No.: 10668A-1

The 3m Semi-anechoic chamber of Shenzhen TCT Testing Technology Co., Ltd. has been registered by Certification and Engineering Bureau of Industry Canada for radio equipment testing

### 5.2. Location

Shenzhen Tongce Testing Lab

Address: 1B/F., Building 1, Yibaolai Industrial Park, Qiaotou, Fuyong, Baoan District, Shenzhen, Guangdong, China

TEL: +86-755-27673339

### 5.3. Measurement Uncertainty

The reported uncertainty of measurement  $y \pm U$ , where expanded uncertainty  $U$  is based on a standard uncertainty multiplied by a coverage factor of  $k=2$ , providing a level of confidence of approximately 95 %.

No.	Item	MU
1	Conducted Emission	$\pm 2.56\text{dB}$
2	RF power, conducted	$\pm 0.12\text{dB}$
3	Spurious emissions, conducted	$\pm 0.11\text{dB}$
4	All emissions, radiated(<1G)	$\pm 3.92\text{dB}$
5	All emissions, radiated(>1G)	$\pm 4.28\text{dB}$
6	Temperature	$\pm 0.1^\circ\text{C}$
7	Humidity	$\pm 1.0\%$

## 6. Test Results and Measurement Data

### 6.1. Antenna requirement

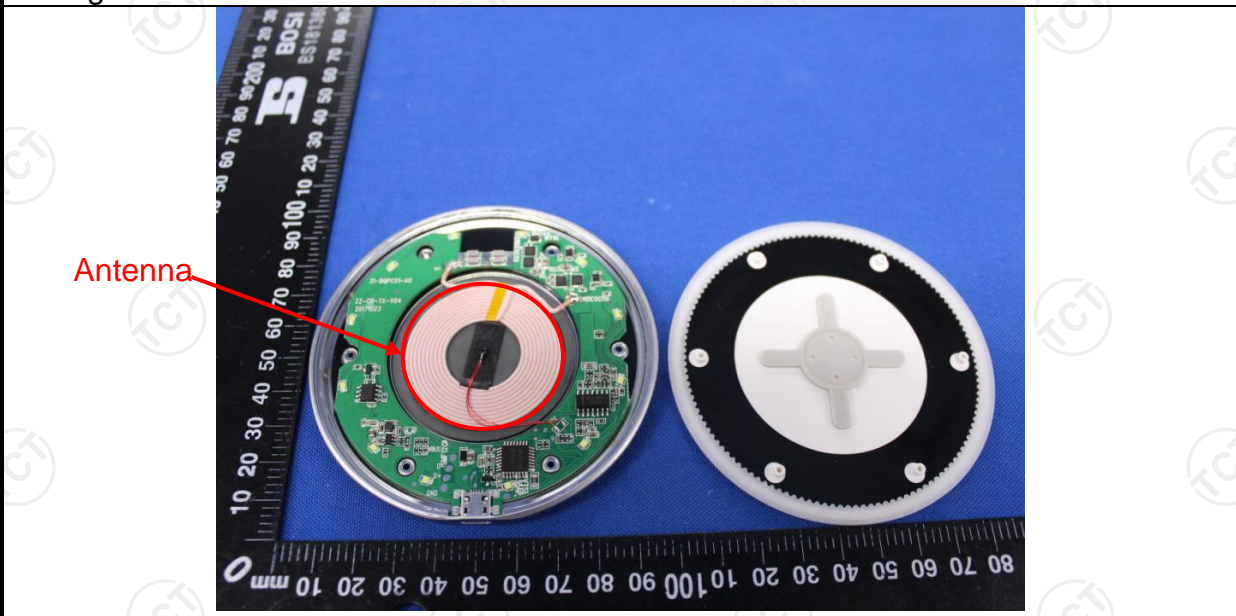
<b>Standard requirement:</b>	FCC Part15 C Section 15.203
------------------------------	-----------------------------

15.203 requirement:

An intentional radiator shall be designed to ensure that no antenna other than that furnished by the responsible party shall be used with the device. The use of a permanently attached antenna or of an antenna that uses a unique coupling to the intentional radiator, the manufacturer may design the unit so that a broken antenna can be replaced by the user, but the use of a standard antenna jack or electrical connector is prohibited.

<b>E.U.T Antenna:</b>	
-----------------------	--

The antenna is inductive loop coil antenna which permanently attached, and the best case gain of the antenna is 0dBi.





## 6.2. Conducted Emission

### 6.2.1. Test Specification

<b>Test Requirement:</b>	FCC Part15 C Section 15.207														
<b>Test Method:</b>	ANSI C63.10:2013														
<b>Frequency Range:</b>	150 kHz to 30 MHz														
<b>Receiver setup:</b>	RBW=9 kHz, VBW=30 kHz, Sweep time=auto														
<b>Limits:</b>	<table border="1"> <thead> <tr> <th rowspan="2">Frequency range (MHz)</th> <th colspan="2">Limit (dBuV)</th> </tr> <tr> <th>Quasi-peak</th> <th>Average</th> </tr> </thead> <tbody> <tr> <td>0.15-0.5</td> <td>66 to 56*</td> <td>56 to 46*</td> </tr> <tr> <td>0.5-5</td> <td>56</td> <td>46</td> </tr> <tr> <td>5-30</td> <td>60</td> <td>50</td> </tr> </tbody> </table>	Frequency range (MHz)	Limit (dBuV)		Quasi-peak	Average	0.15-0.5	66 to 56*	56 to 46*	0.5-5	56	46	5-30	60	50
Frequency range (MHz)	Limit (dBuV)														
	Quasi-peak	Average													
0.15-0.5	66 to 56*	56 to 46*													
0.5-5	56	46													
5-30	60	50													
<b>Test Setup:</b>	<p><i>Remark:</i> E.U.T: Equipment Under Test LISN: Line Impedance Stabilization Network Test table height=0.8m</p>														
<b>Test Mode:</b>	Charging + Transmitting Mode														
<b>Test Procedure:</b>	<ol style="list-style-type: none"> <li>1. The E.U.T is connected to an adapter through a line impedance stabilization network (L.I.S.N.). This provides a 50ohm/50uH coupling impedance for the measuring equipment.</li> <li>2. The peripheral devices are also connected to the main power through a LISN that provides a 50ohm/50uH coupling impedance with 50ohm termination. (Please refer to the block diagram of the test setup and photographs).</li> <li>3. Both sides of A.C. line are checked for maximum conducted interference. In order to find the maximum emission, the relative positions of equipment and all of the interface cables must be changed according to ANSI C63.10: 2013 on conducted measurement.</li> </ol>														
<b>Test Result:</b>	PASS														

**6.2.2. Test Instruments**

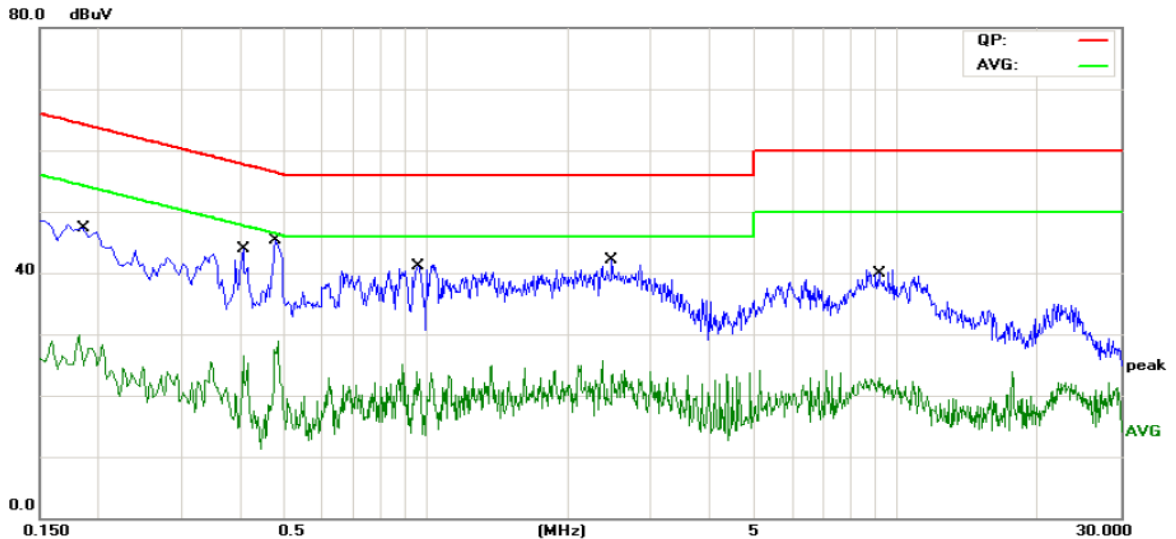
Conducted Emission Shielding Room Test Site (843)				
Equipment	Manufacturer	Model	Serial Number	Calibration Due
Test Receiver	R&S	ESPI	101401	Jun. 12, 2018
LISN	Schwarzbeck	NSLK 8126	8126453	Sep. 27, 2018
Coax cable (9KHz-30MHz)	TCT	CE-05	N/A	Sep. 27, 2018
EMI Test Software	Shurple Technology	EZ-EMC	N/A	N/A

**Note:** The calibration interval of the above test instruments is 12 months and the calibrations are traceable to international system unit (SI).

6.2.3. Test data

Please refer to following diagram for individual

Conducted Emission on Line Terminal of the power line (150 kHz to 30MHz)



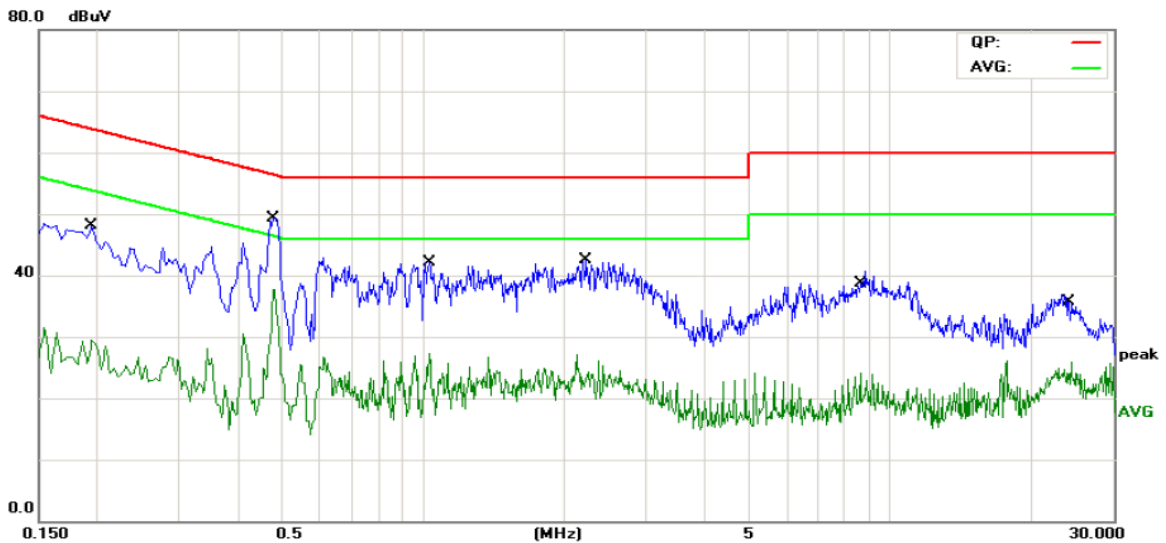
Site Chamber #2 Phase: **L1** Temperature: 25 (C)  
Limit: FCC Part 15C Conduction(QP) Power: AC 120V/60Hz Humidity: 55 %

No.	Mk.	Freq. MHz	Reading Level dBuV	Correct Factor dB	Measure- ment dBuV	Limit dBuV	Over dB	Detector	Comment
1		0.1859	35.85	11.48	47.33	64.21	-16.88	QP	
2		0.1859	18.51	11.48	29.99	54.21	-24.22	AVG	
3		0.4063	32.55	11.36	43.91	57.72	-13.81	QP	
4		0.4063	15.06	11.36	26.42	47.72	-21.30	AVG	
5	*	0.4828	33.93	11.32	45.25	56.29	-11.04	QP	
6		0.4828	17.67	11.32	28.99	46.29	-17.30	AVG	
7		0.9600	29.83	11.21	41.04	56.00	-14.96	QP	
8		0.9600	12.76	11.21	23.97	46.00	-22.03	AVG	
9		2.4855	30.54	11.52	42.06	56.00	-13.94	QP	
10		2.4855	14.20	11.52	25.72	46.00	-20.28	AVG	
11		9.1813	29.15	11.26	40.41	60.00	-19.59	QP	
12		9.1813	11.68	11.26	22.94	50.00	-27.06	AVG	

**Note:**

- Freq. = Emission frequency in MHz
- Reading level (dBuV) = Receiver reading
- Corr. Factor (dB) = Antenna factor + Cable loss
- Measurement (dBuV) = Reading level (dBuV) + Corr. Factor (dB)
- Limit (dBuV) = Limit stated in standard
- Margin (dB) = Measurement (dBuV) – Limits (dBuV)
- Q.P. =Quasi-Peak
- AVG =average
- \* is meaning the worst frequency has been tested in the frequency range 150 kHz to 30MHz

## Conducted Emission on Neutral Terminal of the power line (150 kHz to 30MHz)



Site Chamber #2

Phase: **N**

Temperature: 25 (C)

Limit: FCC Part 15C Conduction(QP)

Power: AC 120V/60Hz

Humidity: 55 %

No.	Mk.	Freq. MHz	Reading Level dBuV	Correct Factor dB	Measure- ment dBuV	Limit dBuV	Over dB	Detector	Comment
1		0.1949	36.60	11.47	48.07	63.82	-15.75	QP	
2		0.1949	17.94	11.47	29.41	53.82	-24.41	AVG	
3	*	0.4784	38.08	11.32	49.40	56.37	-6.97	QP	
4		0.4784	26.48	11.32	37.80	46.37	-8.57	AVG	
5		1.0274	30.96	11.22	42.18	56.00	-13.82	QP	
6		1.0274	15.98	11.22	27.20	46.00	-18.80	AVG	
7		2.2334	30.81	11.61	42.42	56.00	-13.58	QP	
8		2.2334	15.41	11.61	27.02	46.00	-18.98	AVG	
9		8.6280	29.49	11.18	40.67	60.00	-19.33	QP	
10		8.6280	12.90	11.18	24.08	50.00	-25.92	AVG	
11		24.3825	26.19	10.78	36.97	60.00	-23.03	QP	
12		24.3825	15.18	10.78	25.96	50.00	-24.04	AVG	

### Note1:

Freq. = Emission frequency in MHz

Reading level (dBuV) = Receiver reading

Corr. Factor (dB) = Antenna factor + Cable loss

Measurement (dBuV) = Reading level (dBuV) + Corr. Factor (dB)

Limit (dBuV) = Limit stated in standard

Margin (dB) = Measurement (dBuV) - Limits (dBuV)

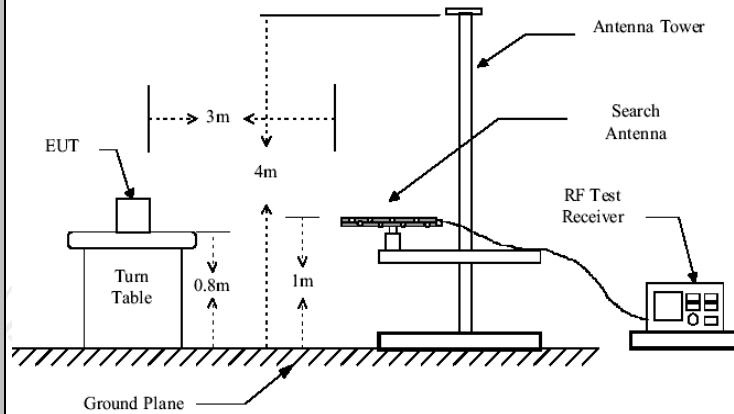
Q.P. =Quasi-Peak AVG =average

\* is meaning the worst frequency has been tested in the frequency range 150 kHz to 30MHz.

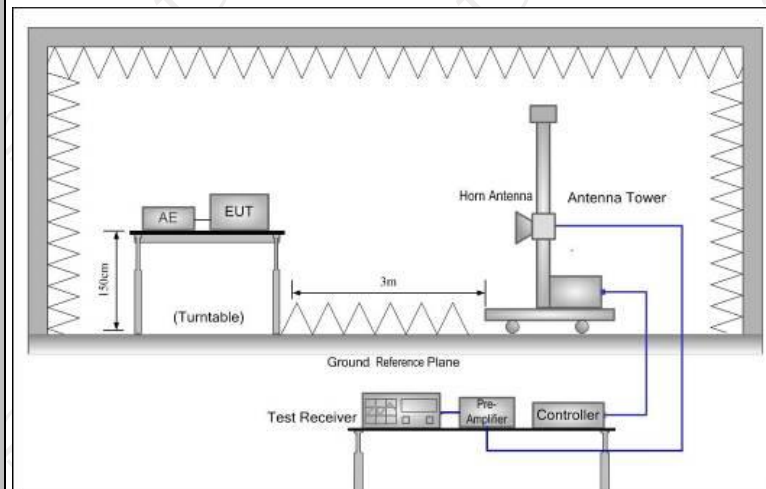
### 6.3. Radiated Spurious Emission Measurement

#### 6.3.1. Test Specification

<b>Test Requirement:</b>	FCC Part15 C Section 15.209					
<b>Test Method:</b>	ANSI C63.10: 2013					
<b>Frequency Range:</b>	9 kHz to 25 GHz					
<b>Measurement Distance:</b>	3 m					
<b>Antenna Polarization:</b>	Horizontal & Vertical					
<b>Operation mode:</b>	Refer to item 4.1					
<b>Receiver Setup:</b>	Frequency	Detector	RBW	VBW	Remark	
	9kHz- 150kHz	Quasi-peak	200Hz	1kHz	Quasi-peak Value	
	150kHz- 30MHz	Quasi-peak	9kHz	30kHz	Quasi-peak Value	
	30MHz-1GHz	Quasi-peak	100KHz	300KHz	Quasi-peak Value	
	Above 1GHz	Peak	1MHz	3MHz	Peak Value	
		Peak	1MHz	10Hz	Average Value	
<b>Limit:</b>	Frequency	Field Strength (microvolts/meter)	Measurement Distance (meters)			
	0.009-0.490	2400/F(KHz)	300			
	0.490-1.705	24000/F(KHz)	30			
	1.705-30	30	30			
	30-88	100	3			
	88-216	150	3			
	216-960	200	3			
	Above 960	500	3			
	Frequency	Field Strength (microvolts/meter)	Measurement Distance (meters)	Detector		
	Above 1GHz	500	3	Average		
	5000	3	Peak			
<b>Test setup:</b>	For radiated emissions below 30MHz					
	<p>Distance = 3m</p> <p>EUT</p> <p>Turn table</p> <p>Ground Plane</p> <p>Pre -Amplifier</p> <p>Receiver</p> <p>Computer</p>					
	30MHz to 1GHz					



Above 1GHz



**Test Procedure:**

1. For the radiated emission test below 1GHz:  
The EUT was placed on a turntable with 0.8 meter above ground. The EUT was set 3 meters from the interference receiving antenna, which was mounted on the top of a variable height antenna tower. The EUT was arranged to its worst case and then tune the antenna tower (from 1 m to 4 m) and turntable (from 0 degree to 360 degrees) to find the maximum reading. A pre-amp and a high PASS filter are used for the test in order to get better signal level.
- For the radiated emission test above 1GHz:  
Place the measurement antenna on a turntable with 1.5 meter above ground, which is away from each area of the EUT determined to be a source of emissions at the specified measurement distance, while keeping the measurement antenna aimed at the source of emissions at each frequency of significant emissions, with polarization oriented for maximum response. The measurement antenna may have to be higher or lower than the EUT, depending on the radiation pattern of the emission and staying aimed at the emission source for receiving the maximum signal. The final

	<p>measurement antenna elevation shall be that which maximizes the emissions. The measurement antenna elevation for maximum emissions shall be restricted to a range of heights of from 1 m to 4 m above the ground or reference ground plane.</p> <p>2. Corrected Reading: Antenna Factor + Cable Loss + Read Level - Preamp Factor = Level</p> <p>3. For measurement below 1GHz, If the emission level of the EUT measured by the peak detector is 3 dB lower than the applicable limit, the peak emission level will be reported. Otherwise, the emission measurement will be repeated using the quasi-peak detector and reported.</p> <p>4. Use the following spectrum analyzer settings:</p> <p>(1) Span shall wide enough to fully capture the emission being measured;</p> <p>(2) Set RBW=100 kHz for <math>f &lt; 1</math> GHz; VBW <math>\geq</math> RBW; Sweep = auto; Detector function = peak; Trace = max hold;</p> <p>(3) Set RBW = 1 MHz, VBW= 3MHz for <math>f \geq 1</math> GHz for peak measurement.</p> <p>For average measurement: VBW = 10 Hz, when duty cycle is no less than 98 percent. VBW <math>\geq 1/T</math>, when duty cycle is less than 98 percent where T is the minimum transmission duration over which the transmitter is on and is transmitting at its maximum power control level for the tested mode of operation.</p>
<b>Test mode:</b>	Refer to section 4.1 for details
<b>Test results:</b>	PASS

6.3.2. Test Instruments

Radiated Emission Test Site (966)				
Name of Equipment	Manufacturer	Model	Serial Number	Calibration Due
Test Receiver	ROHDE&SCHW ARZ	ESVD	100008	Sep. 27, 2018
Spectrum Analyzer	ROHDE&SCHW ARZ	FSQ	200061	Sep. 27, 2018
Pre-amplifier	EM Electronics Corporation CO.,LTD	EM30265	07032613	Sep. 27, 2018
Pre-amplifier	HP	8447D	2727A05017	Sep. 27, 2018
Loop antenna	ZHINAN	ZN30900A	12024	Sep. 27, 2018
Broadband Antenna	Schwarzbeck	VULB9163	340	Sep. 27, 2018
Horn Antenna	Schwarzbeck	BBHA 9120D	631	Sep. 27, 2018
Horn Antenna	Schwarzbeck	BBH 9170	582	Jun. 07, 2018
Antenna Mast	Keleto	CC-A-4M	N/A	N/A
Coax cable (9KHz-1GHz)	TCT	RE-low-01	N/A	Sep. 27, 2018
Coax cable (9KHz-40GHz)	TCT	RE-high-02	N/A	Sep. 27, 2018
Coax cable (9KHz-1GHz)	TCT	RE-low-03	N/A	Sep. 27, 2018
Coax cable (9KHz-40GHz)	TCT	RE-high-04	N/A	Sep. 27, 2018
EMI Test Software	Shurple Technology	EZ-EMC	N/A	N/A

**Note:** The calibration interval of the above test instruments is 12 months and the calibrations are traceable to international system unit (SI).

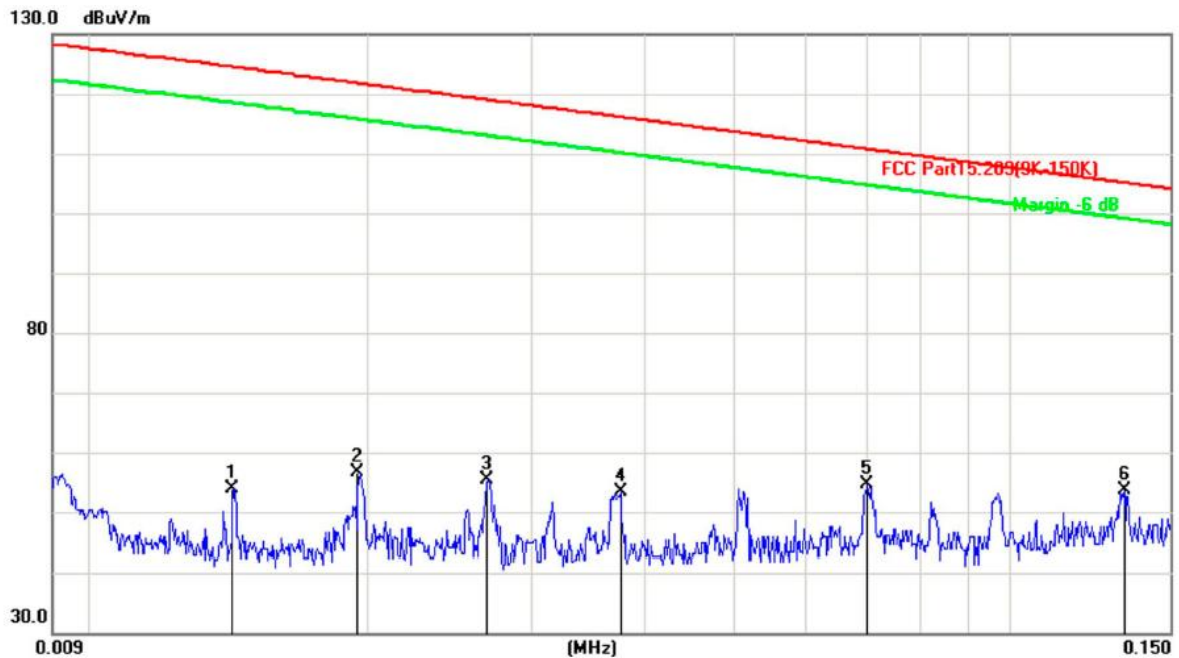


**6.3.3. Test Data**

Please refer to following diagram for individual

**9KHz-30MHz**

9KHz-150KHz:



Site Chamber

Polarization: **Vertical**

Temperature: 25 (C)

Limit: FCC Part15.209(9K-150K)

Power: AC 120V/60Hz

Humidity: 55 %

No.	Mk.	Freq. MHz	Reading Level dBuV	Correct Factor dB	Measure- ment dBuV/m	Limit dBuV/m	Over dB	Detector	Comment
1		0.0142	32.48	21.47	53.95	126.89	-72.94	peak	
2		0.0194	38.01	18.72	56.73	126.02	-69.29	peak	
3		0.0269	36.61	18.86	55.47	124.76	-69.29	peak	
4		0.0376	33.73	19.57	53.30	122.97	-69.67	peak	
5		0.0700	32.79	21.76	54.55	117.53	-62.98	peak	
6	*	0.1337	28.25	25.42	53.67	106.84	-53.17	peak	

150KHz-30MHz:



Site Chamber

Polarization: **Vertical**

Temperature: 25 (C)

Limit: FCC Part15.209(150K-30M)

Power: AC 120V/60Hz

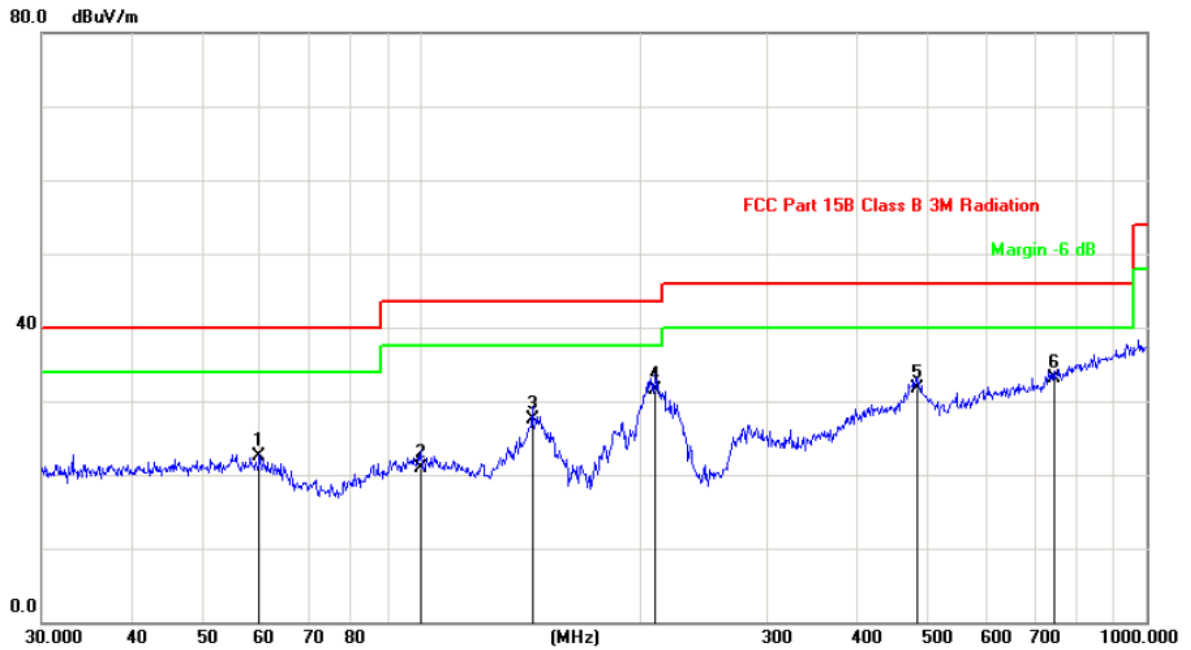
Humidity: 55 %

No.	Mk.	Freq. MHz	Reading Level dBuV	Correct Factor dB	Measure- ment dBuV/m	Limit dBuV/m	Over dB	Detector	Comment
1		0.1621	41.29	26.10	67.39	103.73	-36.34	peak	
2		0.2366	30.70	25.73	56.43	101.48	-45.05	peak	
3		0.6075	26.99	25.16	52.15	72.76	-20.61	peak	
4	*	1.2620	32.93	24.92	57.85	66.94	-9.09	peak	
5		2.0440	31.29	24.70	55.99	69.50	-13.51	peak	
6		3.9639	27.83	24.57	52.40	69.50	-17.10	peak	



30MHz-1GHz

Horizontal:

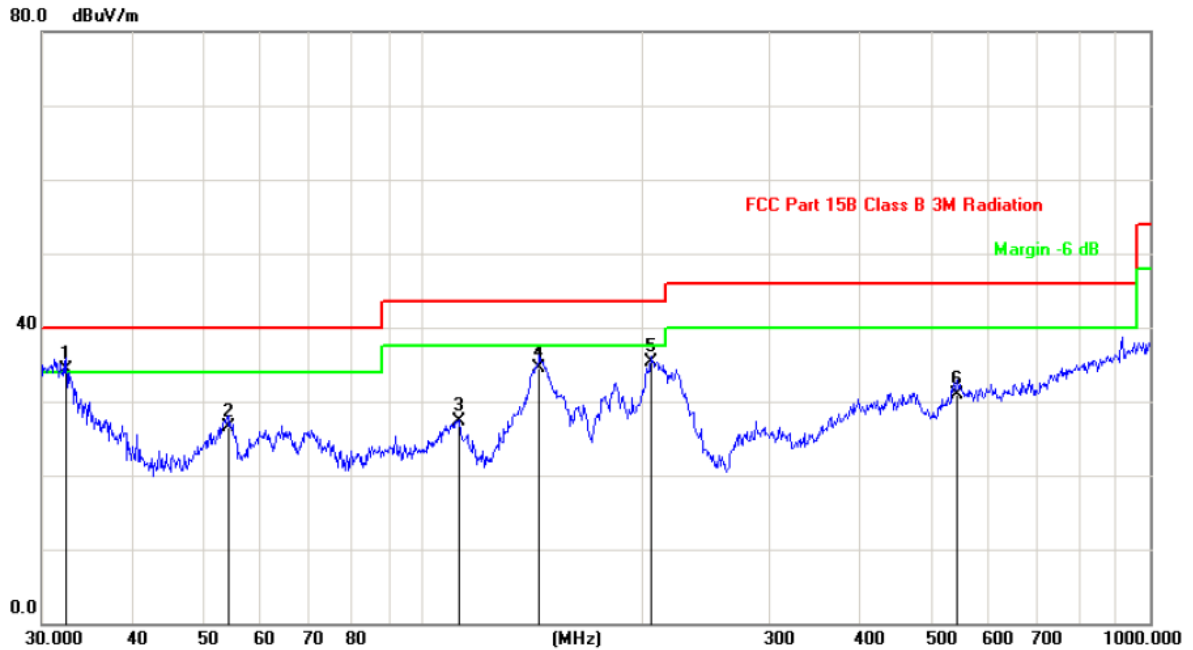


Site: Polarization: **Horizontal** Temperature: 25  
Limit: FCC Part 15B Class B 3M Radiation Power: AC 120V/60Hz Humidity: 55 %

No. Mk.	Freq. MHz	Reading Level dBuV	Correct Factor dB	Measurement dBuV/m	Limit dB/m	Over dB	Detector	Antenna Height cm	Table Degree	Comment
1	59.8588	30.00	-7.42	22.58	40.00	-17.42	QP			
2	99.8777	27.40	-6.44	20.96	43.50	-22.54	QP			
3	142.3243	38.80	-11.34	27.46	43.50	-16.04	QP			
4 *	210.0482	40.60	-9.07	31.53	43.50	-11.97	QP			
5	483.9094	33.10	-1.33	31.77	46.00	-14.23	QP			
6	744.8661	28.00	5.07	33.07	46.00	-12.93	QP			



Vertical:



Site: Polarization: **Vertical** Temperature: 25  
 Limit: FCC Part 15B Class B 3M Radiation Power: AC 120V/60Hz Humidity: 55 %

No.	Mk.	Freq.	Reading Level	Correct Factor	Measurement	Limit	Over	Antenna Height	Table Degree	
		MHz	dBuV	dB	dBuV/m	dB/m	dB	cm	degree	Comment
1	*	32.4059	42.10	-7.78	34.32	40.00	-5.68	QP		
2		54.0711	33.60	-7.04	26.56	40.00	-13.44	QP		
3		112.1305	35.00	-7.63	27.37	43.50	-16.13	QP		
4		144.8418	45.80	-11.35	34.45	43.50	-9.05	QP		
5		206.3976	44.40	-9.07	35.33	43.50	-8.17	QP		
6		543.2742	30.80	0.05	30.85	46.00	-15.15	QP		

**Note:**

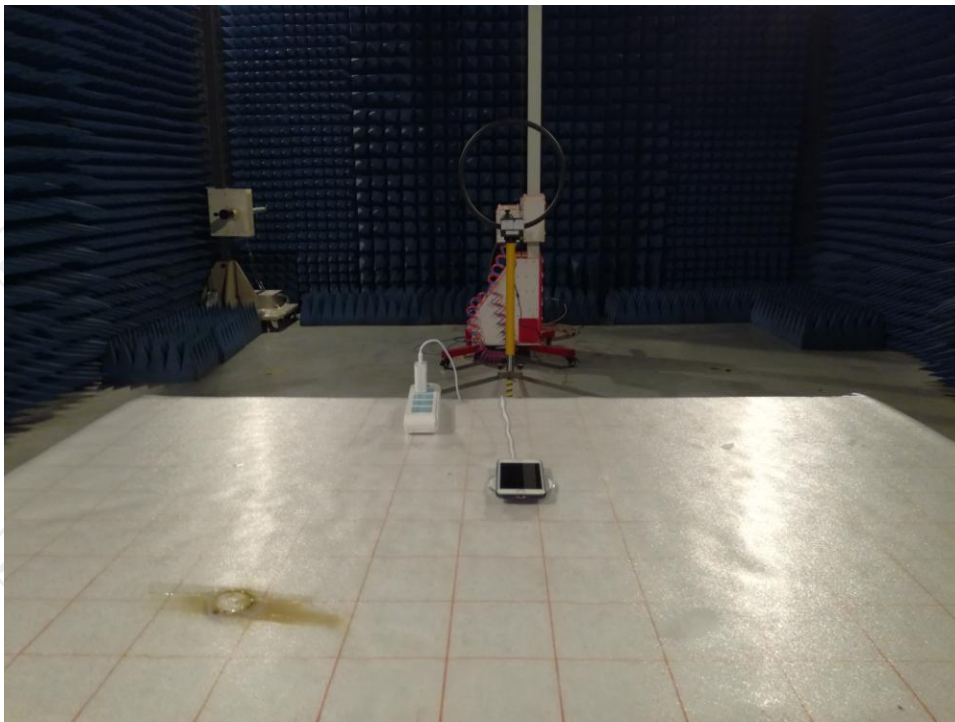
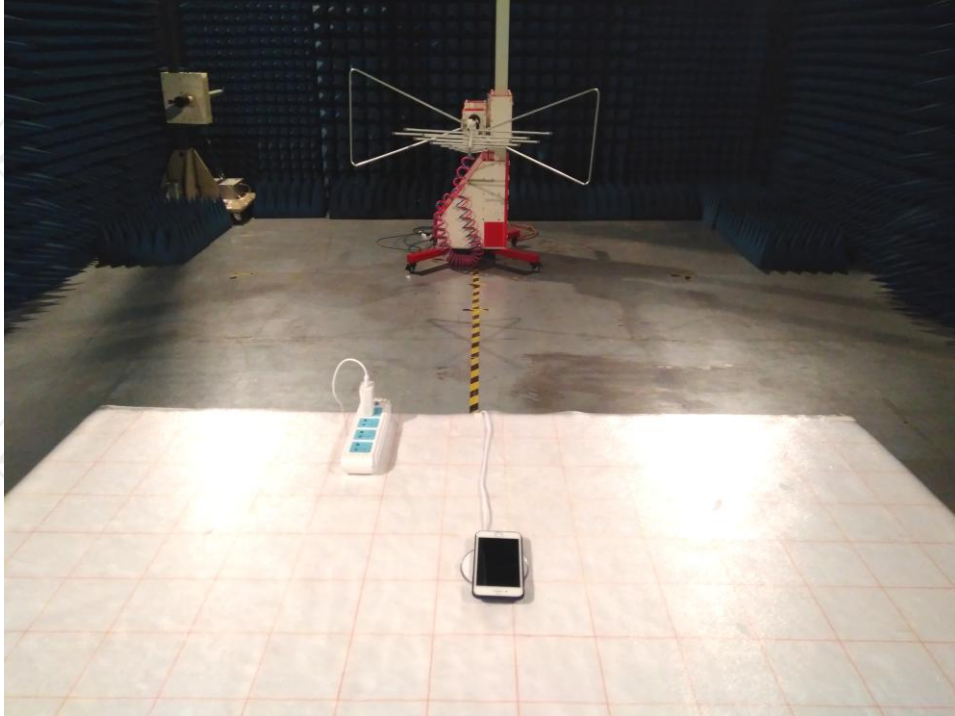
Emission Level=Peak Reading + Correction Factor; Correction Factor= Antenna Factor + Cable loss – Pre-amplifier

### Appendix A: Photographs of Test Setup

Product: Wireless Charger

Model: CDRZ21

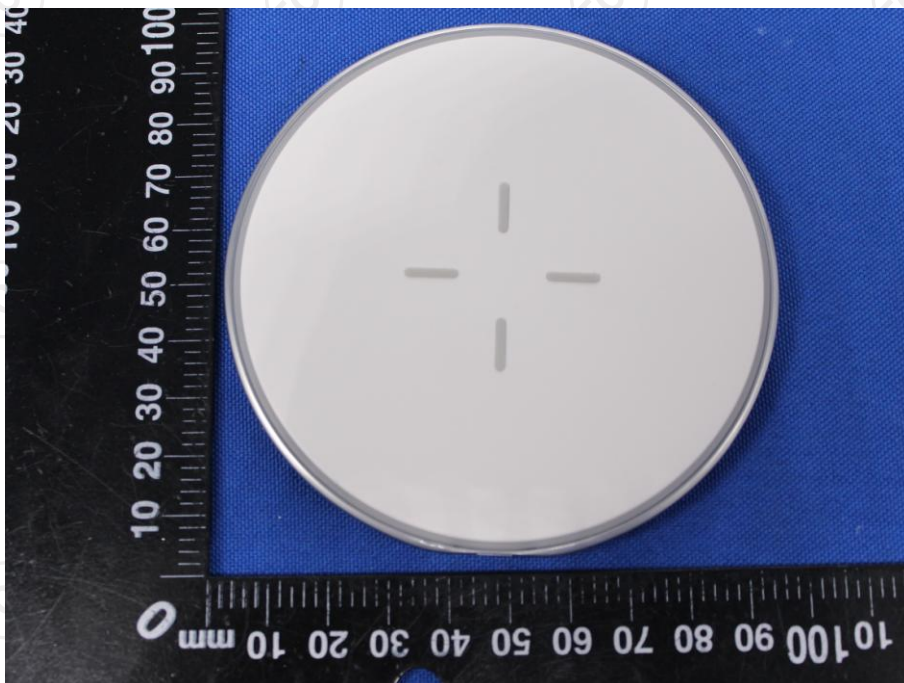
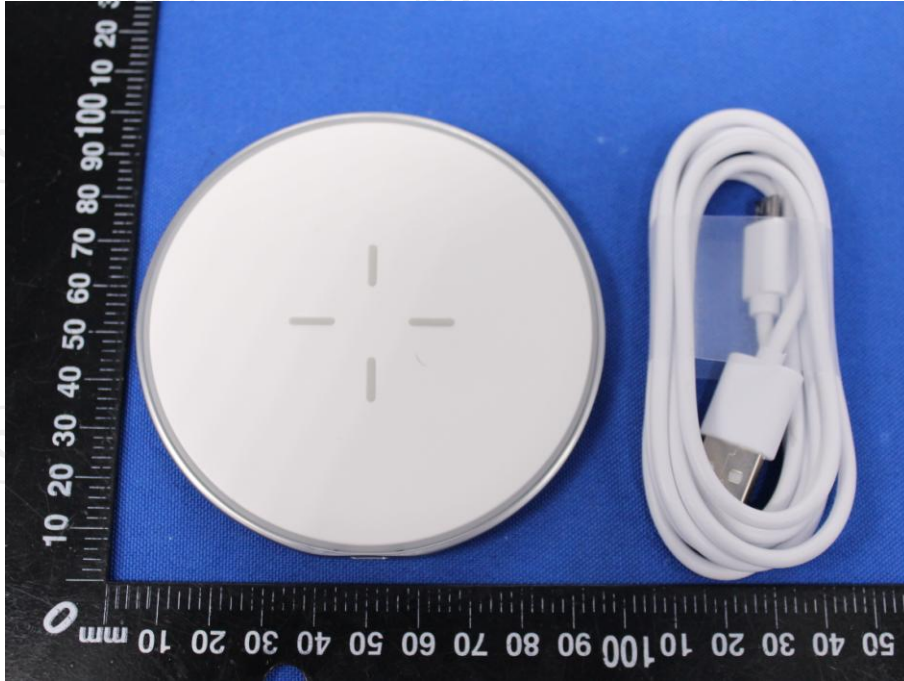
Radiated Emission

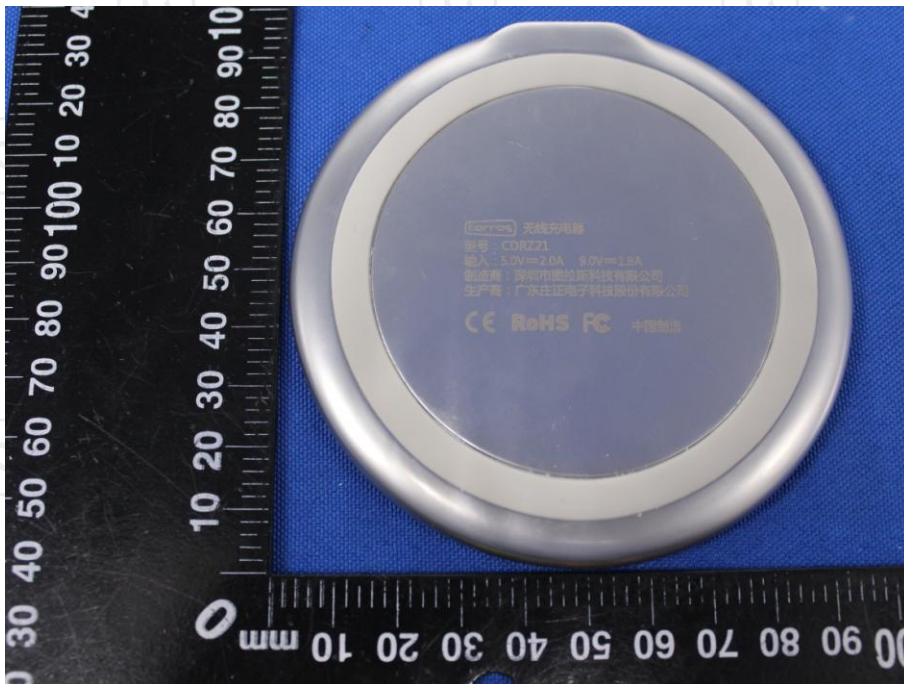
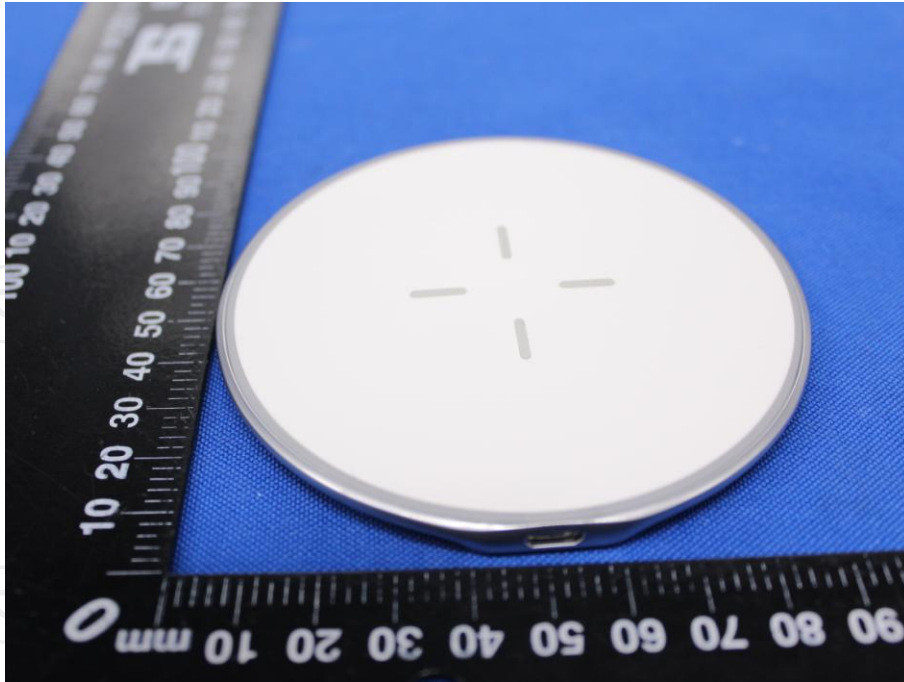


CE



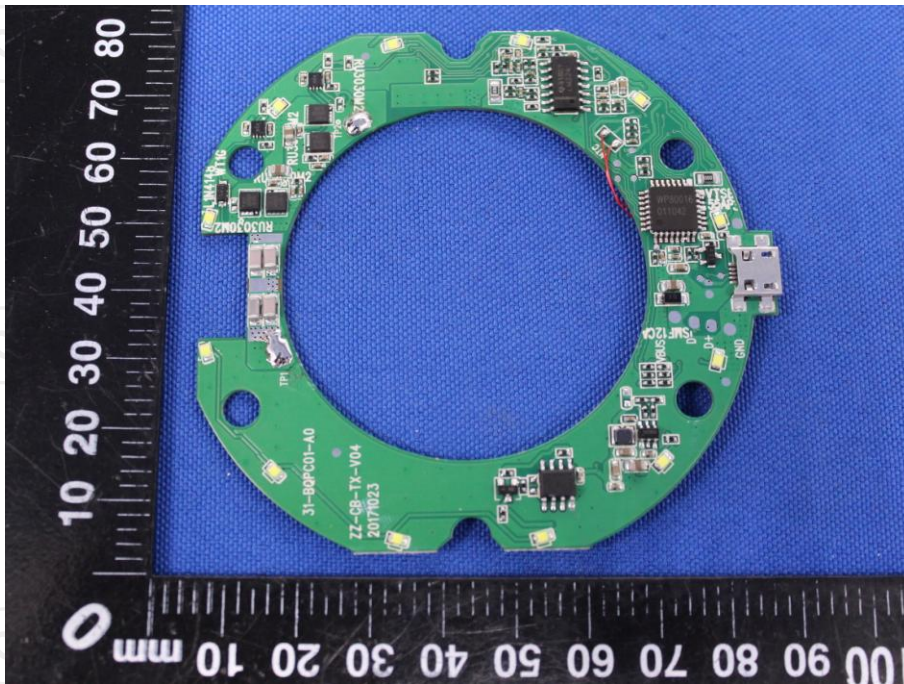
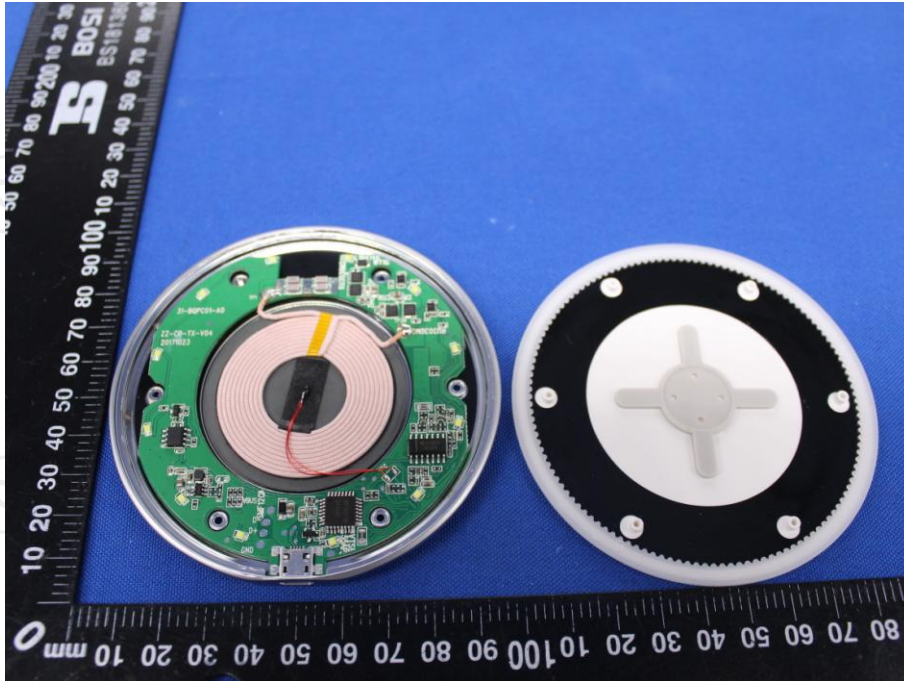
**Appendix B: Photographs of EUT**  
**Product: Wireless Charger**  
**Model: CDRZ21**  
**External Photos**

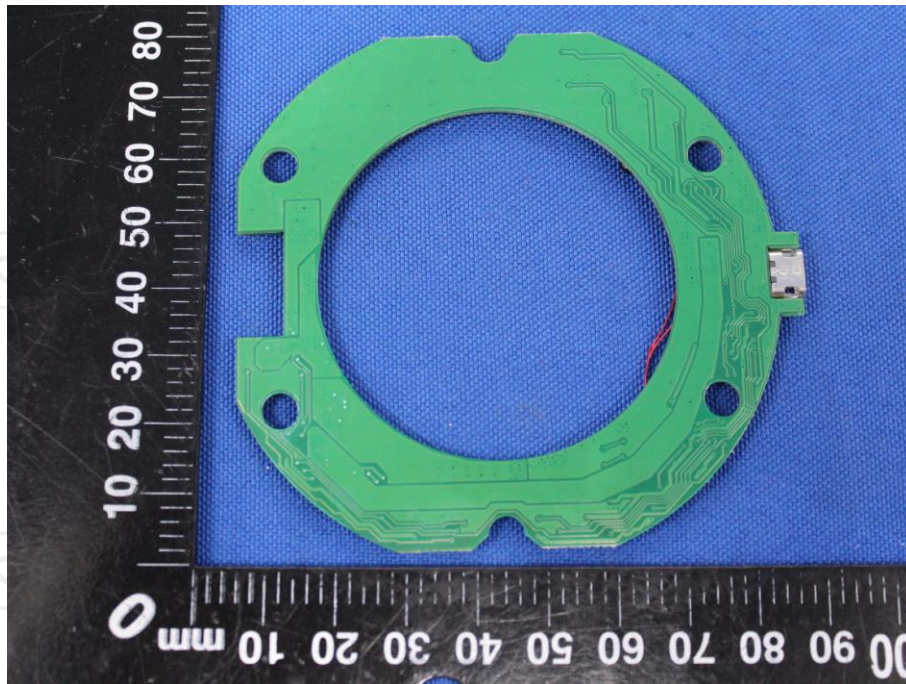






**Product: Wireless Charger**  
**Model: CDRZ21**  
**Internal Photos**





**\*\*\*\*\*END OF REPORT\*\*\*\*\***