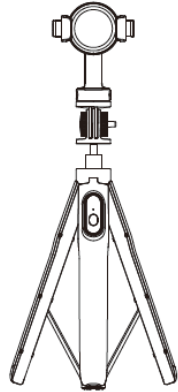




Welcome Guide

MagStick



Two methods to get product installation videos:

- 1- Search our channel on YouTube



- 2- Scan the QR code



ALPI01082A

Shenzhen Andobil Technology Co., Ltd.

Web: www.andobil.com

Email: support@andobil.com

Andobil Is The Trademark Registered In U.S And Other Countries.
All Rights Reserved.

Made in China

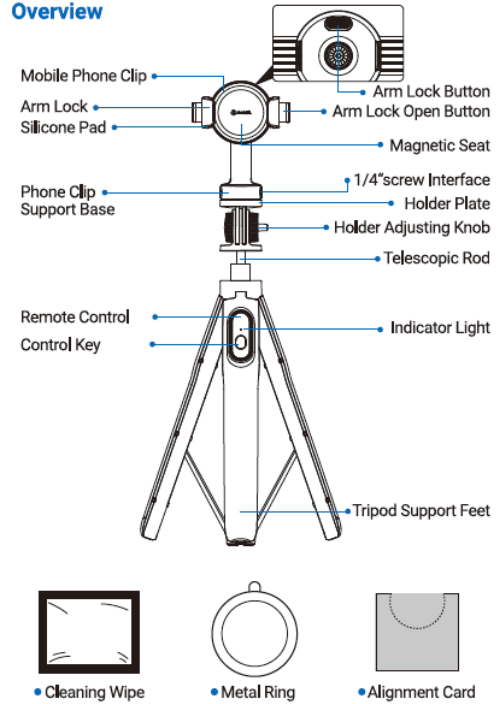
Specifications

Product Name	Magstick
Model	PDUZ79
Wireless Name	Andobil PDUZ79
Wireless Transmission Distance	≤10m (Barrier-free And Interference-free Open Environment)
Maximum Stretching Length of Telescopic Rod	≈150cm
Battery Nominal Value	Button Battery 3V
Photograph Rated Power	4.65mW
Battery Capacity	120mAh/0.36Wh
Operating Temperature	-10℃ ~45℃
Applicable Models	Android 4.3, iOS 5.0 Or Above
Package List	Magstick ×1, Accessories Kit ×1, Welcome Guide ×1

The parameters above are derived from the laboratory of ANDOBIL. The actual parameters would be different because of products and other factors. The image shown here is indicative only.

1

Overview



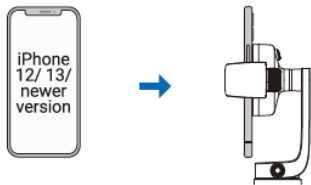
2

Operating Instructions

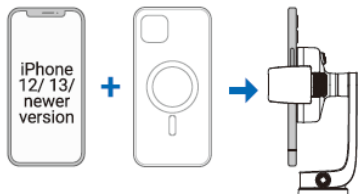
This camera stick has the following two use modes and four use situations, please choose the corresponding way to use according to your mobile phone model.

•Method 1—Use of Magnetic Attraction

① iPhone 12/13 mobile phone: Direct magnetic attraction is OK



② iPhone 12/13 with magnetic case: Direct magnetic attraction is OK



3

③ Other situations (a. iPhone 12/13/newer version with Non-magnetic case; b. Other phone; c. Other phone with non-magnetic case): Please use with the metal ring. The metal ring must stick outside of the phone case.

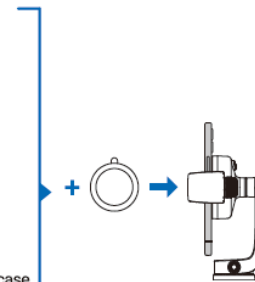
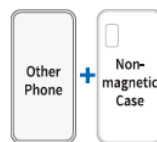
a. iPhone 12/13/newer version + Non-magnetic case



b. Other phone



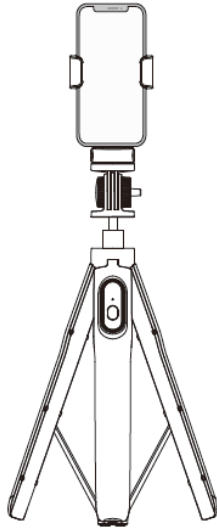
c. Other phone + Non-magnetic case



4

•Method 2—Use of Clamping

Android 4.3, all mobile phone models of iOS5.0 above : direct clamping.



5

Instructions

•Assembling The Metal Ring

There are two ways to paste the metal ring , which are listed as follows. Please choose between them according to your needs. (If you don't want to use the magnetic attraction function of the holder, you don't need to install the magnetic ring)

Stick on the back of the mobile phone



Stick on the back of the mobile phone case



or

•Note:

1. To better protect your phone, it is recommended that you paste the metal ring on the back of the phone case.
2. Please use the metal ring with a phone case that has a flat and smooth back surface. Phone case with rough surfaces (such as frosted surface) please choose the thick metal ring.
3. Please use the phone's match-up card to aim at the position before pasting the metal ring.

6

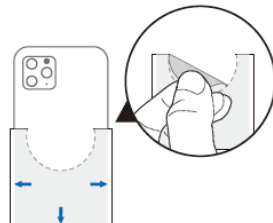
•Paste steps:

1. Use a cleaning wipe to clean the back of the phone (or phone case) where the metal ring needs to be pasted.



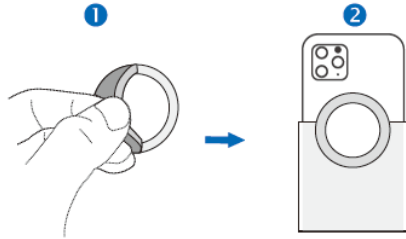
If use a phone case, **INSTALL** the metal ring **OUTSIDE** of phone case.

2. Select the match-up card that matches the model of the phone, (remove the middle semicircle) and aim it at the edge at the back of the phone/phone case.

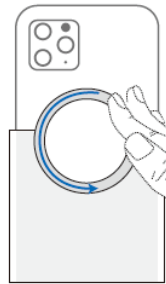


7

3. Tear off the protective paper of the metal ring and paste the metal ring onto the transparent sticker.



4. Press firmly along the metal ring to secure it. Remove the match-up card, and the installation is completed.

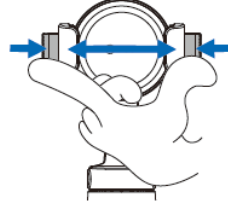


8

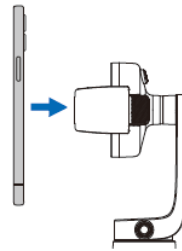
•Install The Phone

Method 1—Use of Magnetic Attraction

1. Press the arm lock open button, open the clamp arm of the phone mount.



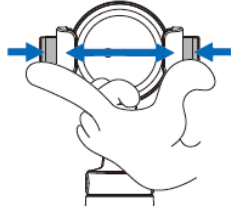
2. Put the mobile phone (mobile phone with magnetic suction function or installed with magnetic ring) into the magnetic base, and use it after the magnetic suction is fitted.



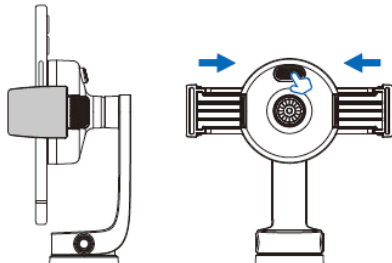
9

Method 2—Use of Clamping

1. Press the arm lock open button, open the clamp arm of the phone mount.



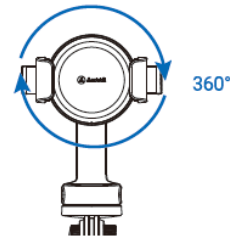
2. Put the phone into the phone mount and press the arm lock button on the back, clip the phone with one key.



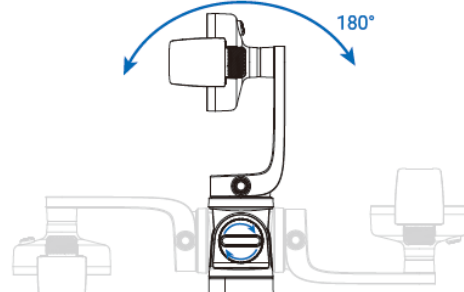
10

•Description of stick function

1. Rotate the phone clip to adjust its angle 360° horizontally.



2. Turn the adjusting knob to adjust the angle of the phone clip vertically 180°.

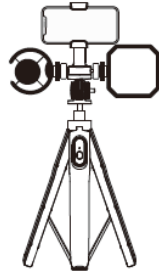


11

3. Pull the telescopic rod to adjust its length.

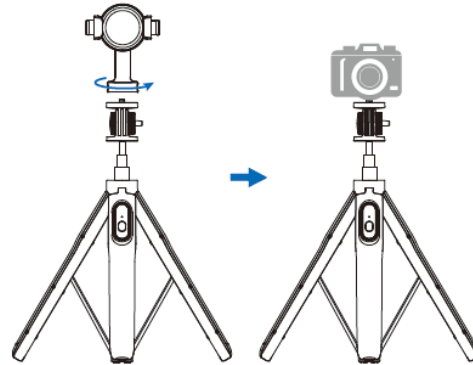


4. There are two 1/4" screw interfaces on the side of the phone clip support base, which can be connected to the microphone clip / supplementary light.



12

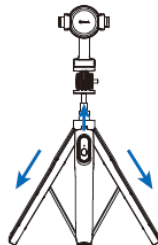
5. Unscrew the phone clip support base, use it with the camera.



13

•Description of tripod function

1. Spread out: pull out the foot at the bottom of the tripod (the greater of the opening angle, the more stable), and pull the telescopic rod up to the appropriate height, put it on the plane, use it as camera tripod in seconds.



2. Fold and store: after use, push up (note: do not hold the foot and push up), close the foot of the tripod, and withdraw the telescopic rod inward, you can store it quickly.



14

•Remote control instructions

1. Use for the first time

Please pull out the insulation sheet of the remote control first, then use it normally.



Pull out the insulation sheet directly.

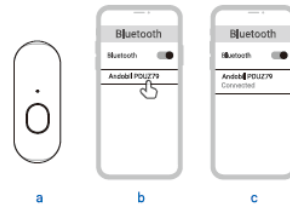
2. Matching

a. **Start the phone and enter into matching mode:** press the control key for 2 seconds, green light is flashing. After 3 seconds, enter into matching mode. (If there is no bluetooth matched within one minute, the green indicator will turn off and enter dormant state. If there is no operation for 2 hours, it will automatically shut down.)

b. **Wireless matching:** after the remote control enters matching mode, open the bluetooth of the phone, find the wireless name "Andobil PDUZ79" from the bluetooth list. Click connect, after matching is successful, the green light is on 3 seconds before it goes out.

(Note: If there is no operation for 3 minutes, it will enter dormant state; no operation for 2 hours, automatic shutdown; if matching fails within 1 minute, the green indicator will turn off and enter dormant state. No operation for 2 hours, automatic shutdown.)

15



3. Awaken dormant state

In dormant state, click the control key to wake the phone up.

- If the phone bluetooth matched before is in open state, the green indicator will go out after 3 seconds, automatically connect the mobile phone.
- If the phone bluetooth matched before is off, green indicator will flick after 3 seconds. If no matching in 1 minute, it will enter dormant state.

4. Take photos/record videos

- After the bluetooth matching is successful, open camera APP;
- Select camera mode/record video mode, focus on the objects;
- Press the control button, take photos/record videos quickly.

16

5. Replace the battery

Press the control key for 2 seconds, turn on the remote control, the green light flashes five times every 10 seconds, it indicates that the battery is about to run out. At this time, please open the battery cover with a coin, take out the old battery, then put the new battery (+ pole face up), close and lock the battery cover again, you can use it.

Note: please use the model of CR1632 3V button battery to replace.



① Remove the remote control

② Open the battery cover

③ Take the old battery out



④ Put the new battery in.



⑤ Lock the battery cover.

17

6. Power off

Press the control button for 3 seconds, the green indicator flickers and turns off, power off.

Attentions

- Please read this manual carefully before use and keep it properly for future reference.
- Please adjust the angle before use the product. Do not shake or adjust the parts when using in case the mobile phone falls off.
- Keep this product away from children. When using the tripod, children should be accompanied by adult for safe use, in case the tripod falls down to cause accidents.
- When using this product in public places, do not leave; when using it in dangerous places, please operate it with caution.
- When using the tripod in outdoors, please pay attention to the wind. Place it on a flat place to avoid the wind blowing it down.
- Please do not assemble, disassemble or transform this product.
- Do not use it overload.
- After use, please carefully fold and store. Beware of pinching your hands.
- Pay attention to waterproof, please do not use chemical solvents to wipe the product. Do not splash or apply strongly acidic reagent to the product.

18

Battery Warning

1. The remote control of this product contains button battery, please dispose of it separately from household waste. If the remote control is scrapped, it is necessary to remove the button battery, insulate both ends of the positive and negative poles, and put them into the designated recycling location or to the environmental protection recycling department for disposal. Do not discard at will;
2. Do not disassemble, strike, squeeze, or throw the battery into the fire. If the battery life appears serious shortening, please do not continue to use, give it to professionals for maintenance;
3. Improper battery replacement will have risk of explosion. You can only use the same type or equivalent type of battery, replace by professionals;
4. Battery (battery pack or assembled battery) must not be exposed to such environment as sunlight, fire or similar overheating;
5. Do not use the battery after soaked in water;
6. Steps of disassembling the battery: ① Remove the remote control; ② Open the battery cover with a coin; ③ Take out the button battery.

FCC Statement

This device complies with part 15 of the FCC rules. Operation is subject to the following two conditions: (1) this device may not cause harmful interference, and (2) this device must accept any interference received, including interference that may cause undesired operation.

Changes or modifications not expressly approved by the party responsible for compliance could void the user's authority to operate the equipment.

NOTE: This equipment has been tested and found to comply with the limits for a Class B digital device, pursuant to part 15 of the FCC Rules. These limits are designed to provide reasonable protection against harmful interference in a residential installation. This equipment generates uses and can radiate radio frequency energy and, if not installed and used in accordance with the instructions, may cause harmful interference to radio communications. However, there is no guarantee that interference will not occur in a particular installation. If this equipment does cause harmful interference to radio or television reception, which can be determined by turning the equipment off and on, the user is encouraged to try to correct the interference by one or more of the following measures:

- Reorient or relocate the receiving antenna.
- Increase the separation between the equipment and receiver.
- Connect the equipment into an outlet on a circuit different from that to which the receiver is connected.
- Consult the dealer or an experienced radio/TV technician for help.

The device has been evaluated to meet general RF exposure requirement. The device can be used in portable exposure condition without restriction.