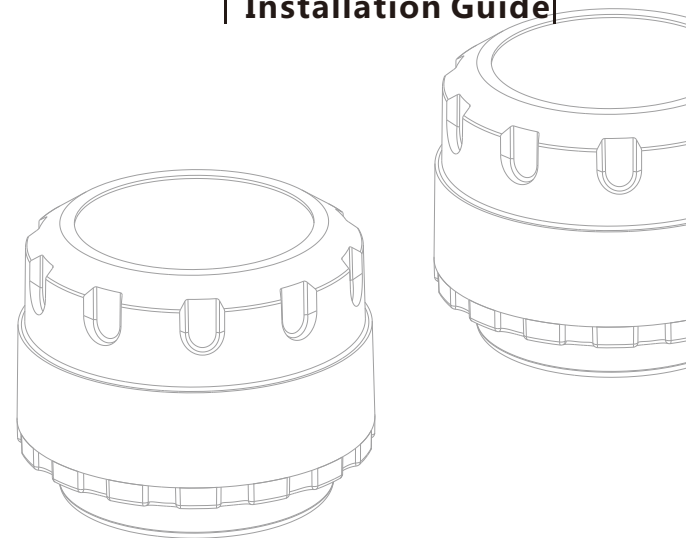


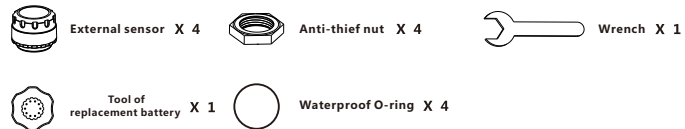
Smart TPMS External Sensor

| Installation Guide |



1,Installation of sensor

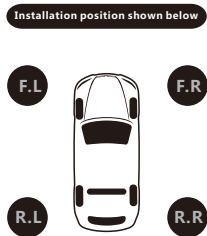
A,Components of external sensor



B, Installed sensor corresponding to tires' position:

ID code of four sensors are configured.
You only need to install sensors correspond to tires' position.

* Please install configured receiver and sensors.
If there is wrong ID code or mix position of sensor,
please refer "learn code by inflate&deflate" to re-match sensor
(detail please refer to use manual of receiver)



C,Installation of sensor

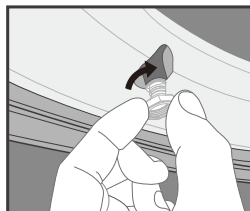
* Please make sure receiver is open when installing sensor, in this way,
data could be sent to receiver immediately once sensor installed.

Detail process:

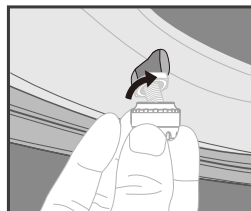
- 1,Please read user manual carefully
- 2,Please prepare corresponding sensor and anti-thief nut
- 3,Take off cap of valve, make sure the top of valve is smooth, no break (or there will be leakage)
- 4,Screw anti-thief nut by clockwise
- 5,Install corresponding sensor by clockwise (don't force it too hard to damage sensor)
- 6,Check leakage by using foam, ensure no leakage
- 7,Tighten anti-thief nut by wrench with reverse, make sure anti-thief nut is close to external sensor (fix sensor by left hand, wrench moderately force by right hand)
- 8,Installation other sensors by same method

* Please safekeeping installation tool (wrench for anti-thief nut),In case of need to remove and install sensors

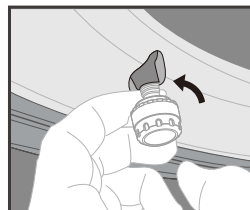
Picture of installation sensors



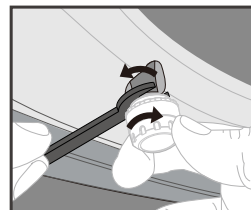
A First screw anti-theft nut



B Tighten sensor



C Screw anti-theft nut by anticlockwise to fix sensor



D Tighten anti-theft nut by wrench with reverse

* Please safekeeping installation tool (wrench for anti-theft nut), in case of need to remove and install sensors

2, Replace battery of external sensor

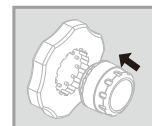
* In order to avoid sensor assembled with wrong case, please disassemble and assemble external sensor piece by piece when replace batter, don't mix or do disassembling&assembling at the same time.

Please replace battery (CR1632, working temperature: $-30^{\circ}\text{C} \sim 85^{\circ}\text{C}$) of external sensor in time when heard voice prompt "low power of * tire" and icon of   is flashing. This battery can be bought from local distributor.**

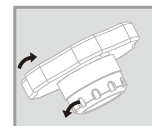
- 1, Please prepare wrench before dismounting external sensor. Screw anti-theft nuts by clockwise, and then screw sensor by anticlockwise
- 2, Fasten sensor with tool, unscrew cover of sensor counterclockwise
- 3, Remove the old battery from external sensor and keep it
- 4, Install new CR1632 battery, positive upside
- 5, Screw cover of sensor clockwise



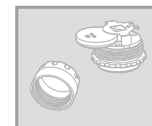
1 Remove sensor



2 Place sensor into special wrench



3 Open external sensor



4 Replace CR1632 battery

* Remind: Ensure waterproof rubber is in good condition, if there is any damage, please replace new one, when replace battery of external sensor.

3,Parameter of external sensor

Battery life	24 months
Working voltage	2.1V-3.6V
Storage temperature	-35°C- 85°C
Working temperature	-30°C- 80°C
Temperature accuracy	±2°C (25°C)
Working pressure	0-99Psi
Pressure accuracy	±1.5Psi
IP	IP67
Transmit power	<10dBm
Transmit frequency	433.92 MHz
Dimension	≤21mm(diameter)*17mm(high)
Weight	8.0g

4,Warranty

Warranty is 1 year counted from buying date (not include periodically consumable part). if the product failure under normal operation, We will provide free replacement or repair during the period of warranty. We reserves the right to change new products or other equivalent product.

Exception to warranty:

- 1,Don't follow user manual to operate product
- 2,Product damaged because of accident,neglect,abuse,misuse
- 3,Repair without authorization.
- 4,Damaged due to transportation
- 5,Ther damage not because of design,technical,manufacturing and quality problem

All failure products should be sent to us or our authorized repair center, attached with detail description of defect and show original purchase invoice. Warranty card is effective only in purchased country. This warranty is restricted to above conditions, we will not responsible for the damage related to our products (like tire explosion). This warranty provides you specific legal rights, but may also varied different rights for other countries

Please find warranty card in specification of receiver

FCC Statement

This equipment has been tested and found to comply with the limits for a Class B digital device, pursuant to part 15 of the FCC rules. These limits are designed to provide reasonable protection against harmful interference in a residential installation. This equipment generates, uses and can radiate radio frequency energy and, if not installed and used in accordance with the instructions, may cause harmful interference to radio communications. However, there is no guarantee that interference will not occur in a particular installation. If this equipment does cause harmful interference to radio or television reception, which can be determined by turning the equipment off and on, the user is encouraged to try to correct the interference by one or more of the following measures:

- Reorient or relocate the receiving antenna.
- Increase the separation between the equipment and receiver.
- Connect the equipment into an outlet on a circuit different from that to which the receiver is connected.
- Consult the dealer or an experienced radio/TV technician for help.

To assure continued compliance, any changes or modifications not expressly approved by the party.

Responsible for compliance could void the user's authority to operate this equipment. (Example- use only shielded interface cables when connecting to computer or peripheral devices).

This equipment complies with Part 15 of the FCC Rules. Operation is subject to the following two conditions:

- (1) This device may not cause harmful interference, and
- (2) This device must accept any interference received, including interference that may cause undesired operation.