

Figure 3 - Assembly Inside View



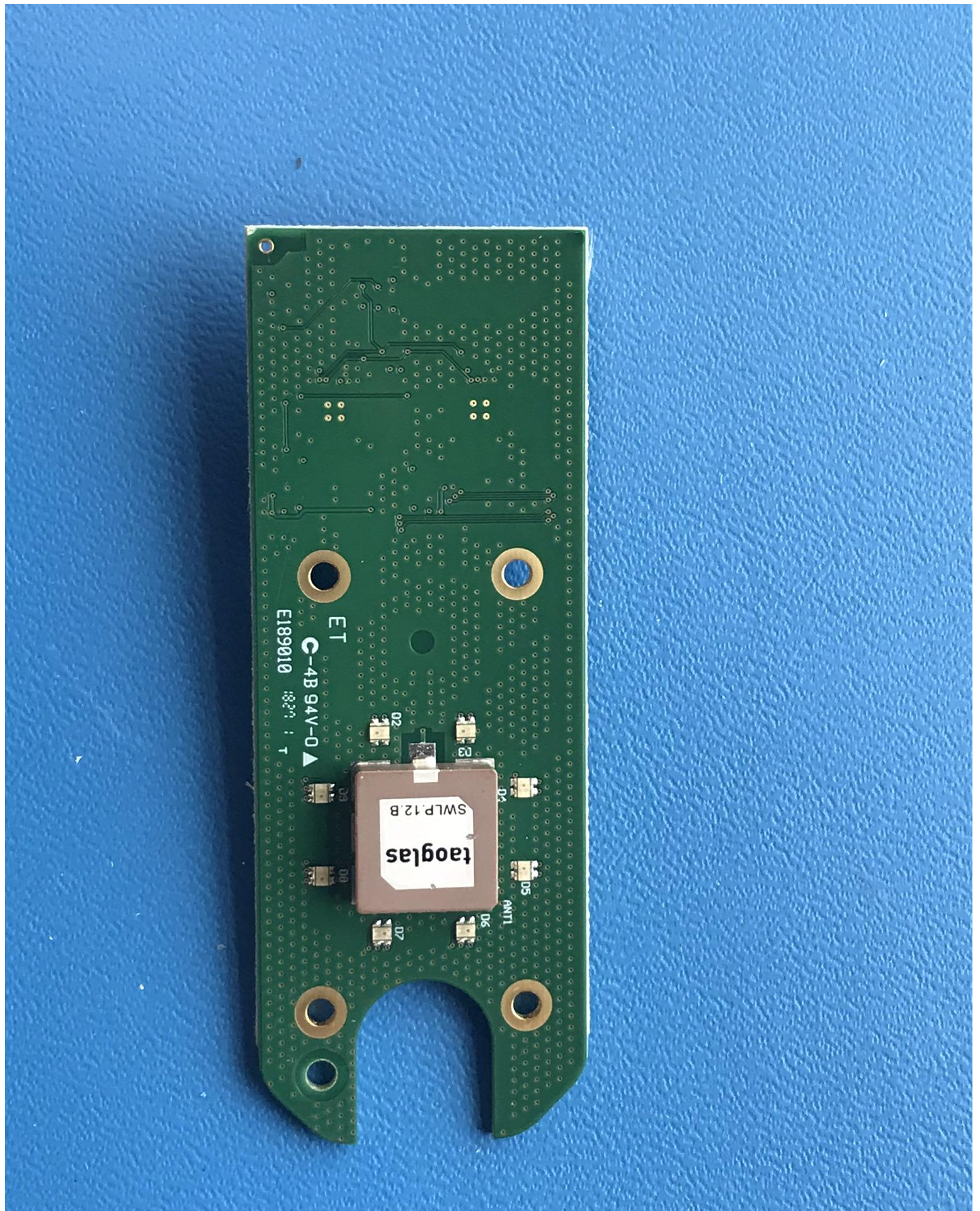


Figure 4 - Exterior Antenna/LED PCB Side 1





Figure 5 - Exterior Antenna/LED PCB Side 2





Figure 6 - Interior Antenna PCB Side 1



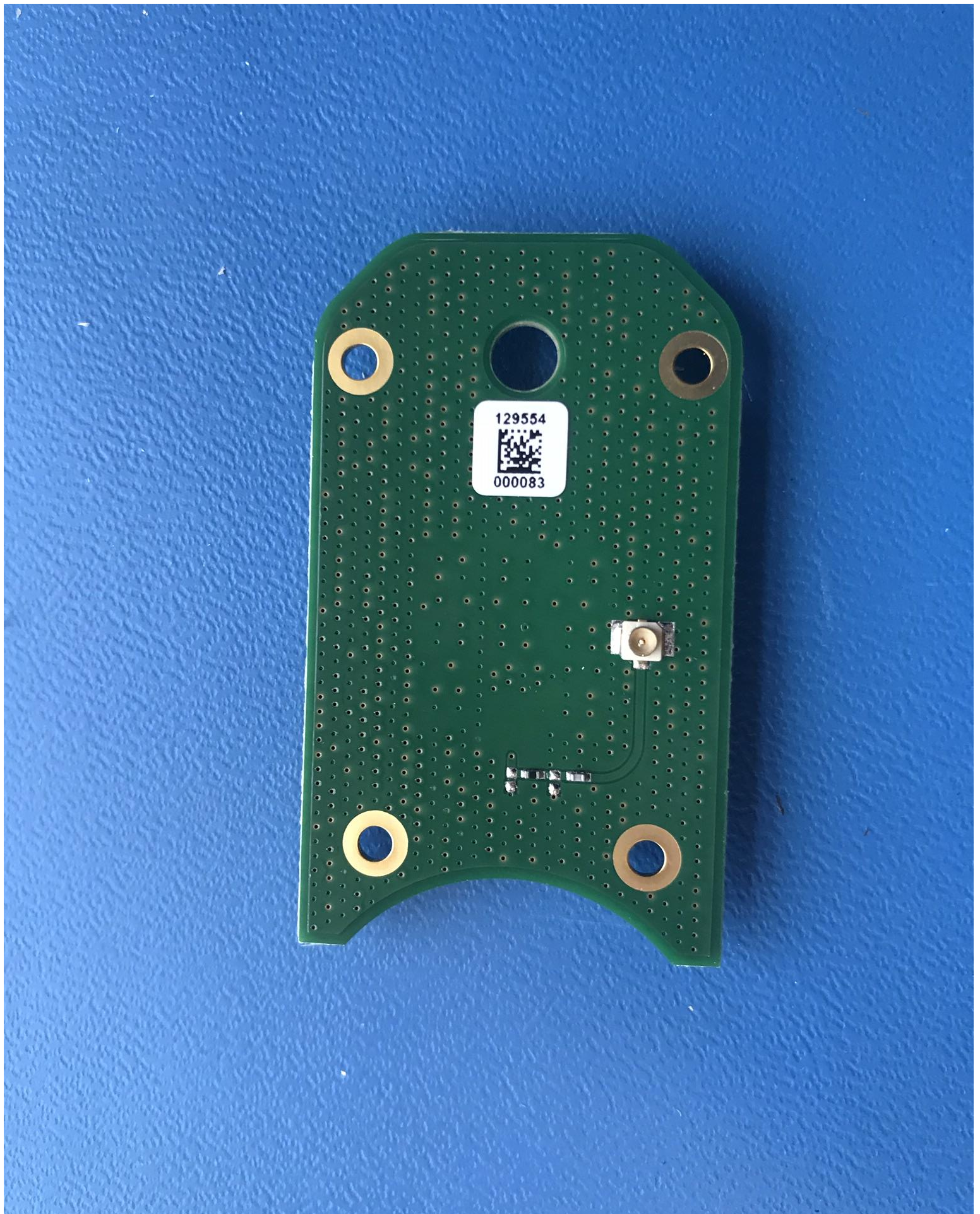


Figure 7 - Interior Antenna PCB Side 2



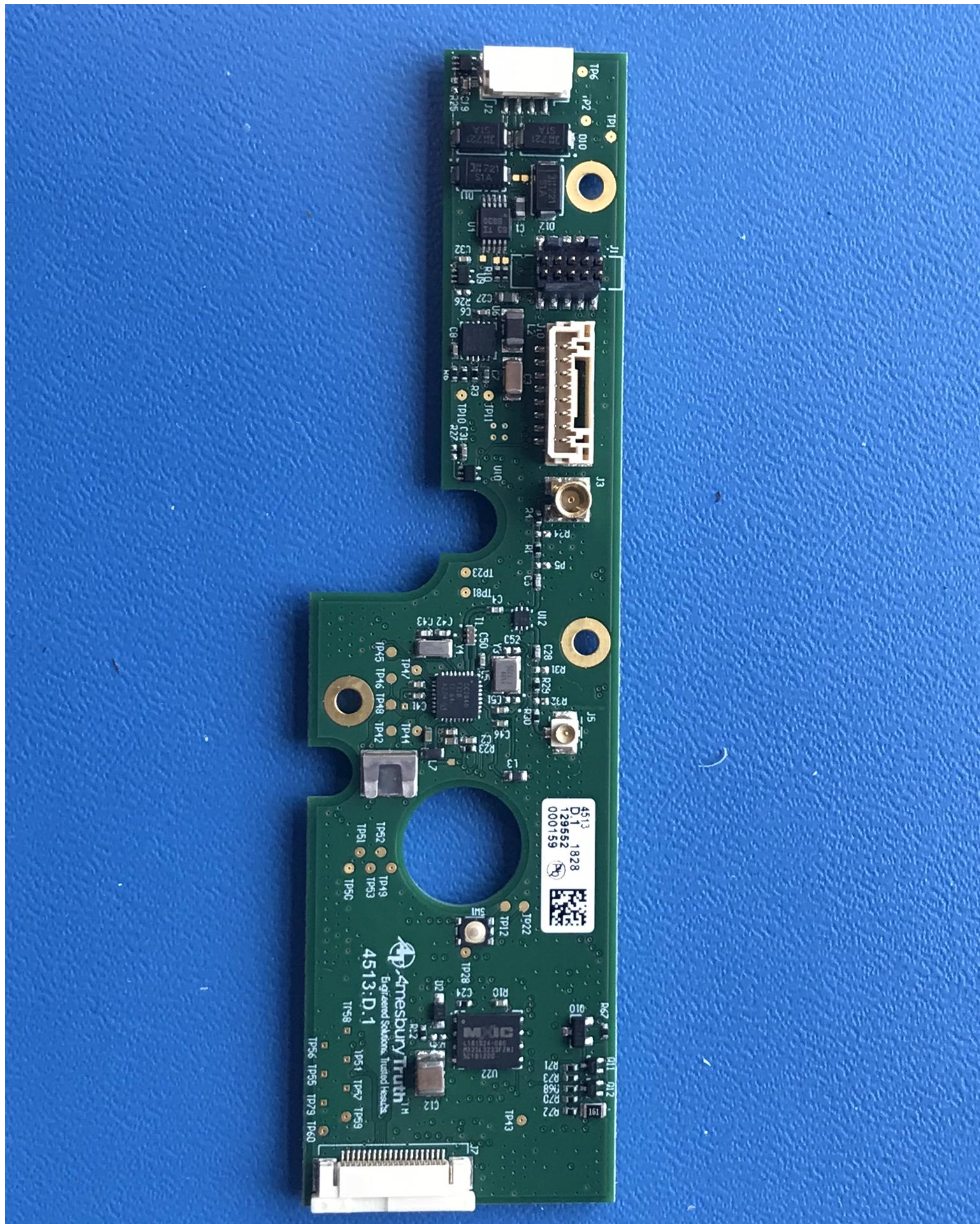


Figure 8 - Main PCB Side 1



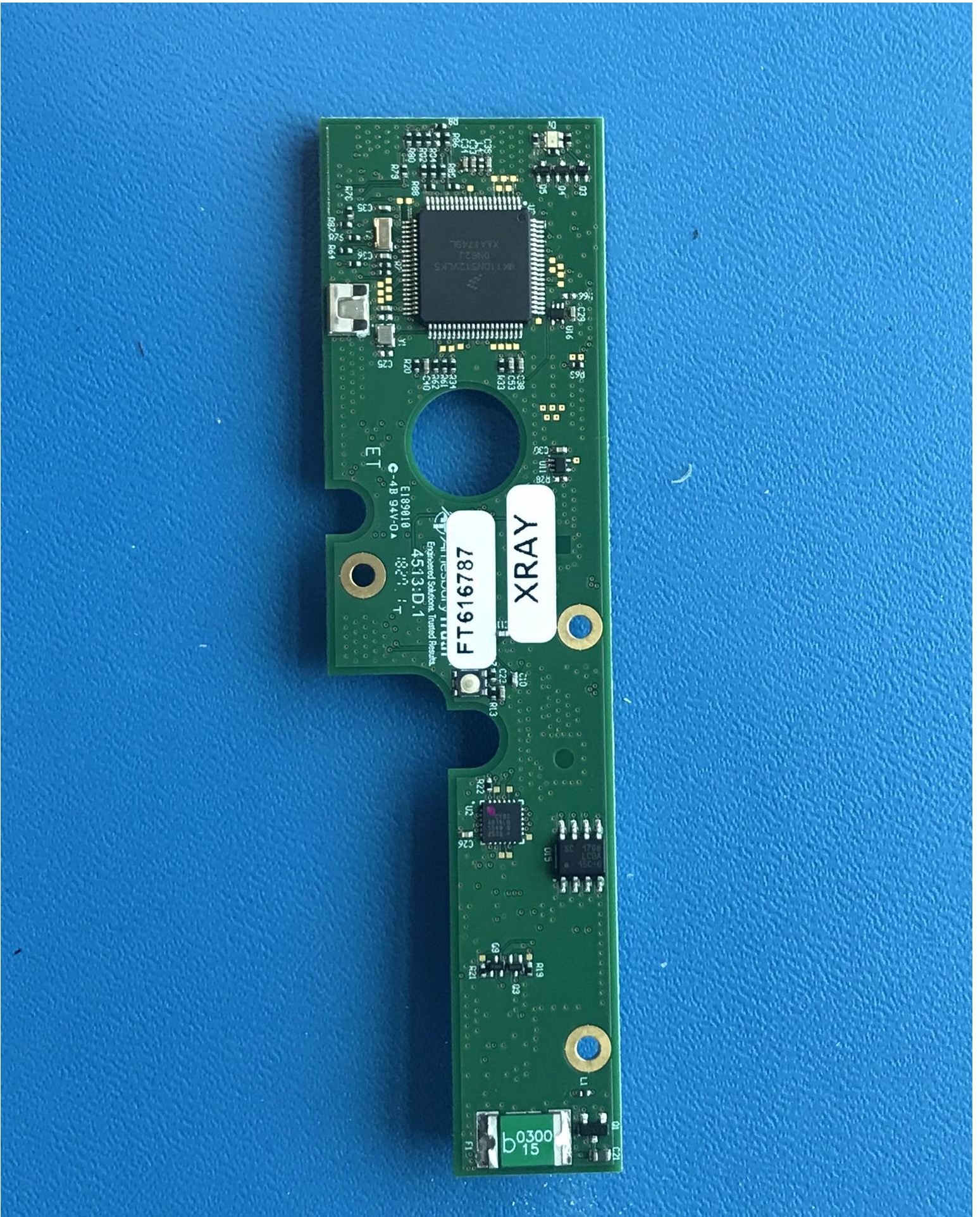


Figure 9 - Main PCB Side 2