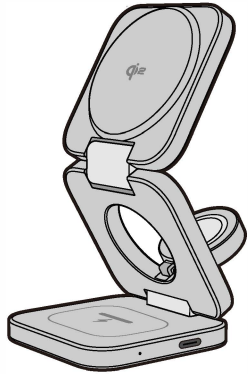


64.00 mm



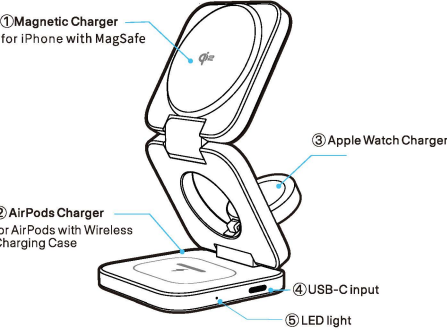
Magnetic 3-in-1 Wireless Charging Stand
USER MANUAL

Specification

- Input:
- USB-C 9V=3A/12V=3A
- Output:
- Magnetic Wireless Charger: 5W/7.5W/10W/15W
 - Air Pods Charger: 5W
 - Apple Watch Charger: 3W/5W
- Compatibility:
- iPhone 16 Pro Max, iPhone 16 Pro, iPhone 16, iPhone 16 Plus
 - iPhone 15 Pro Max, iPhone 15 Pro, iPhone 15, iPhone 15 Plus
 - iPhone 14 Pro Max, iPhone 14 Pro, iPhone 14, iPhone 14 Plus
 - iPhone 13 Pro Max, iPhone 13 Pro, iPhone 13, iPhone 13 mini
 - iPhone 12 Pro Max, iPhone 12 Pro, iPhone 12, iPhone 12 mini
 - AirPods Pro 2, AirPods Pro with MagSafe Charging Case
 - AirPods with Wireless Charging Case
 - Apple Watch Ultra 2, Apple Watch Ultra
 - Apple Watch Series 10, Apple Watch Series 9, Apple Watch Series 8
 - Apple Watch Series 7, Apple Watch Series 6, Apple Watch Series 5
 - Apple Watch Series 4, Apple Watch Series 3, Apple Watch Series 2
 - Apple Watch Series 1, Apple Watch SE 1st & 2nd

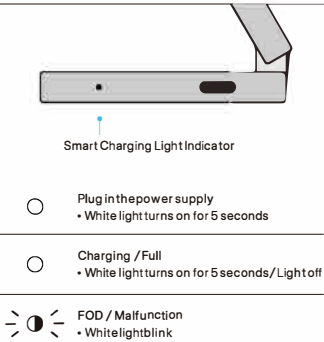
Size: 68x68x32mm(Fold)
Weight: 135g

Product Introduction

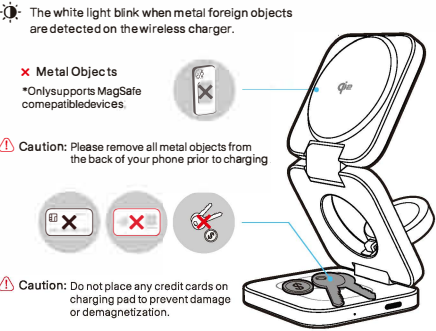


⚠️ Notes: It is recommended to use PD certified adapters of at least 30W output.

Light mode



FOD(Foreign Object Detection)



Protective Function

- Multiple Circuit Protection
- Over-Heat Protection
- Short-Circuit Protection
- Over-Voltage Protection
- Over-Current Protection
- Over-Charge Protection
- Flame Retardant Protection

Attention

- Do not disassemble, Puncture, drop, bend or modify
- Do not shake while charging
- Take off the charging devices when fully charged
- Do not expose to liquids
- Keep away from children
- Avoid extreme temperatures
- 1 year warranty
- Use the original cable or a certified cable (such as MFi)
- The information in this user manual may be changed without notice

FCC Statement

This device complies with part 15 of the FCC Rules. Operation is subject to the following two conditions: (1) This device may not cause harmful interference, and (2) this device must accept any interference received, including interference that may cause undesired operation.

Any changes or modifications not expressly approved by the party responsible for compliance could void the user's authority to operate the equipment.

NOTE: This equipment has been tested and found to comply with the limits for a Class B digital device, pursuant to Part 15 of the FCC Rules. These limits are designed to provide reasonable protection against harmful interference in a residential installation. This equipment generates, uses and can radiate radio frequency energy and, if not installed and used in accordance with the instructions, may cause harmful interference to radio communications. However, there is no guarantee that interference will not occur in a particular installation.

If this equipment does cause harmful interference to radio or television reception, which can be determined by turning the equipment off and on, the user is encouraged to try to correct the interference by one or more of the following measures:

- Reorient or relocate the receiving antenna.
- Increase the separation between the equipment and receiver.
- Connect the equipment into an outlet on a circuit different from that to which the receiver is connected.
- Consult the dealer or an experienced radio/TV technician for help.

FCC Radiation Exposure Statement

This equipment complies with FCC radiation exposure limits set forth for an uncontrolled environment. This equipment should be installed and operated with a minimum distance of 20 cm between the radiator and your body.

- CE Marking**
This signifies that products sold in the EEA have been assessed to meet high safety, health, and environmental protection requirements.
- RoHS Compliant**
Relates to the use of such substances in electrical and electronic equipment. Its objective is to protect human health/environment.
- Disposal and Recycling Information**
The symbol (with or without a solid bar) on the device, batteries (included), and/or the packaging, indicates that the device and its electrical accessories (for example, a headset, adapter or cable) and batteries should not be disposed of as household garbage.
- For Indoor Use Only**
To identify electrical equipment designed primarily for indoor use.