



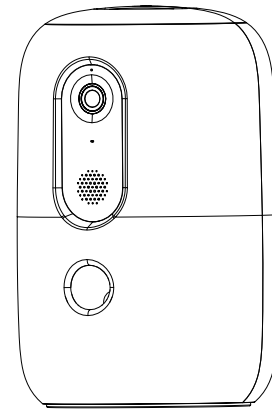
# SMART PET FOOD DISPENSER



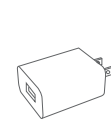
Product Manual

## Catalogue

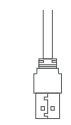
Please read this manual carefully before use to ensure safe use of the smart automatic treat dispenser.



Accessories list (subject to the actual product)



adapterX1

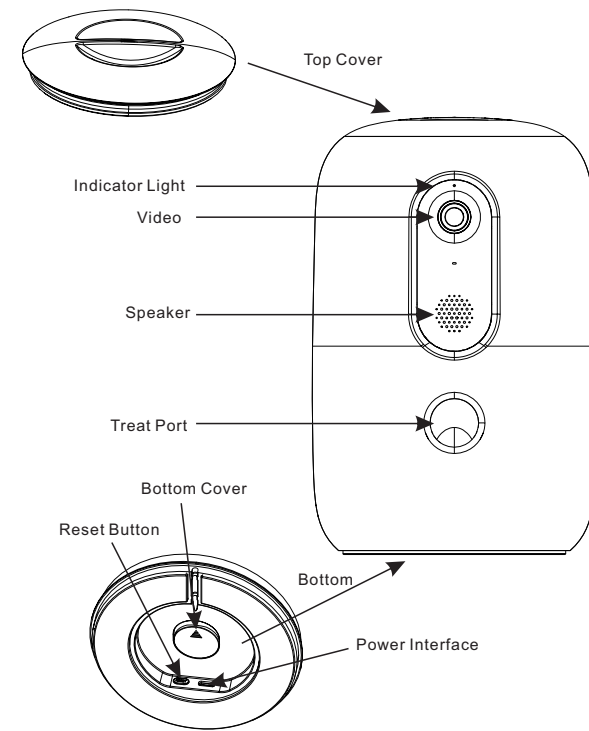


cableX1



manualX1

## Product Description



## Installation Steps

1. Open the upper lid and remove the power cord adapter in the grain bucket.
2. Plug the power cord into the power connector behind the host and connect the adapter to power on.
3. Add dry pet food to the feeder dispenser.
4. Suitable for dry food round/oval below 8-12mm
5. Bind the device on the smart life APP to set up your pet's feeding and planning.

OPERATING TIPS - Suitable for dry food only.

## Bind Smart Life APP

### APP download and installation

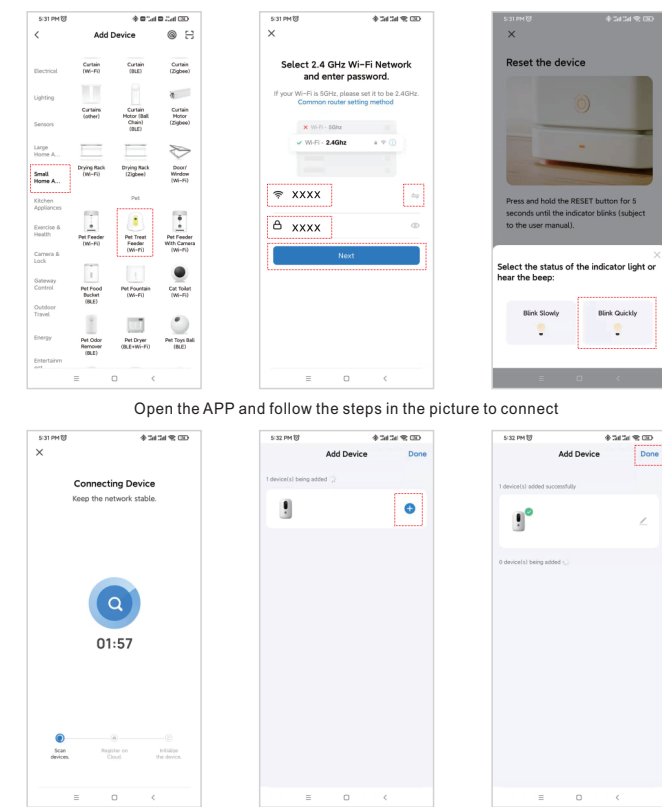
Scan the QR code below to download the Smart Life app and complete the installation.



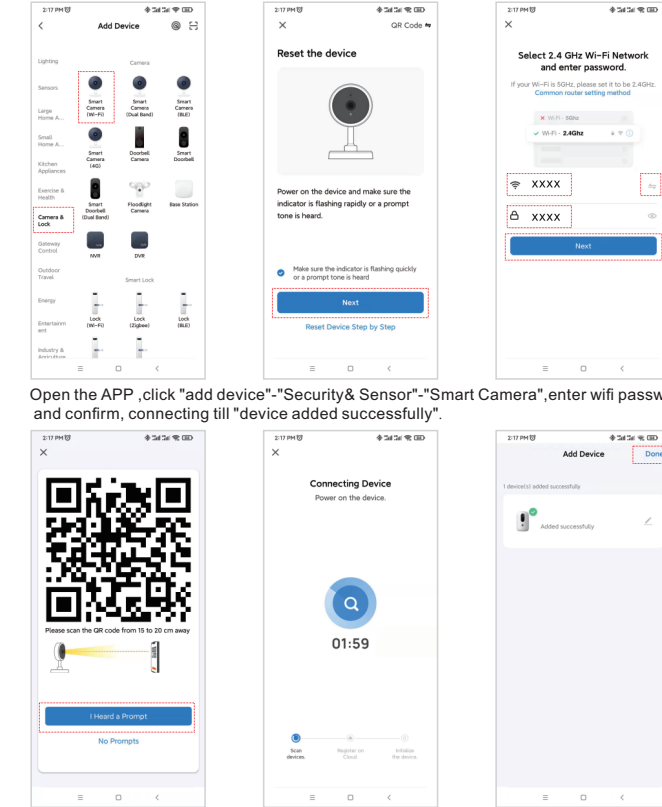
### Registered APP

Open the installed smart life App and follow the prompts to register

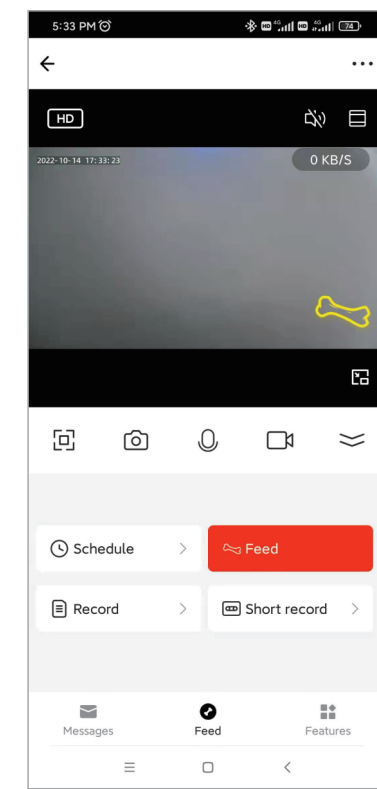
## Quick Configuration



## Video Version Pet Feeder Configuration



## (APP interface introduction)



## Precautions

1. Please place the device correctly; Prevent pets from tipping over the device.
2. Please keep the food bucket dry and sealed, and check regularly to ensure food residue
3. Do not drop all substances except pet dry food into the food bucket, otherwise it will cause abnormal use of the equipment and even cause pet safety problems.
4. To prevent pets from spilling the product, it is recommended to place it in a corner or against a wall.
5. The product tearproof bite wire is installed as concealed as possible to avoid damage to the equipment caused by pets biting the wire.
6. If children use this device, please ensure that it is under the guidance of an adult.
7. Buckets and bowls should be cleaned regularly
8. This device is not recommended for pets within three months

Maintenance records: .....

Maintenance time: .....

Fault conditions: .....

Fault cause: .....

Trouble shooting: .....

Return and exchange proof: .....

Date of validity: .....

Original device ID: .....

New device ID: .....

maintenance personnel signature: .....

Maintenance Department seal: .....

单页尺寸: 100\*127mm

#### FCC Statement:

This equipment has been tested and found to comply with the limits for a Class B digital device, pursuant to part 15 of the FCC Rules. These limits are designed to provide reasonable protection against harmful interference in a residential installation. This equipment generates, uses and can radiate radio frequency energy and, if not installed and used in accordance with the instructions, may cause harmful interference to radio communications. However, there is no guarantee that interference will not occur in a particular installation. If this equipment does cause harmful interference to radio or television reception, which can be determined by turning the equipment off and on, the user is encouraged to try to correct the interference by one or more of the following measures:

- Reorient or relocate the receiving antenna.
- Increase the separation between the equipment and receiver.
- Connect the equipment into an outlet on a circuit different from that to which the receiver is connected.
- Consult the dealer or an experienced radio/TV technician for help.

Caution: Any changes or modifications to this device not explicitly approved by manufacturer could void your authority to operate this equipment.

This device complies with part 15 of the FCC Rules. Operation is subject to the following two conditions: (1) This device may not cause harmful interference, and (2) this device must accept any interference received, including interference that may cause undesired operation.

#### RF Exposure Information:

This equipment complies with FCC radiation exposure limits set forth for an uncontrolled environment. This equipment should be installed and operated with minimum distance 20cm between the radiator & your body.