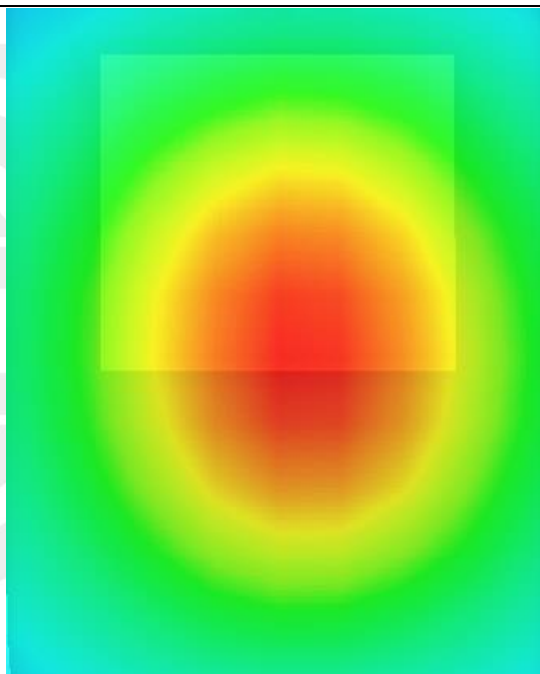
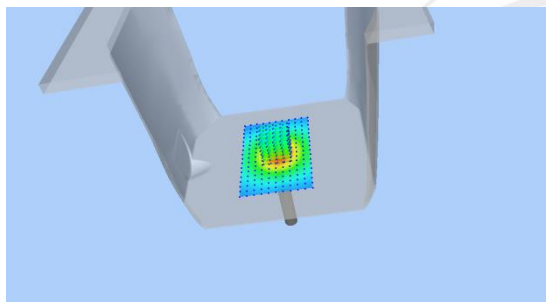
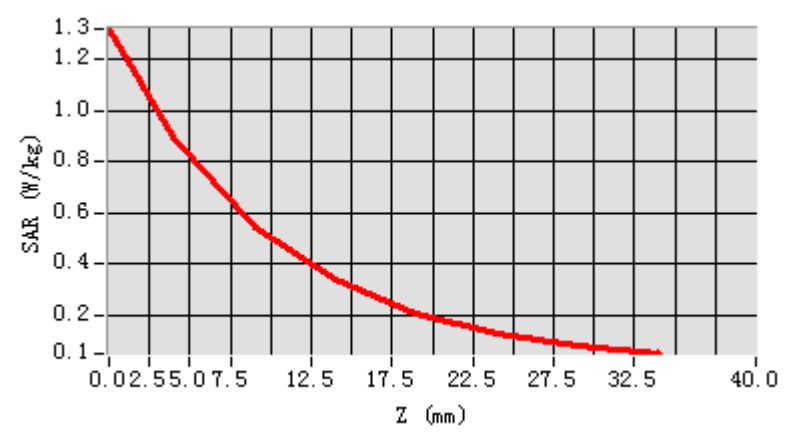


Z Axis Scan



System Performance Check Data (835MHz)

Type: Phone measurement (Complete)

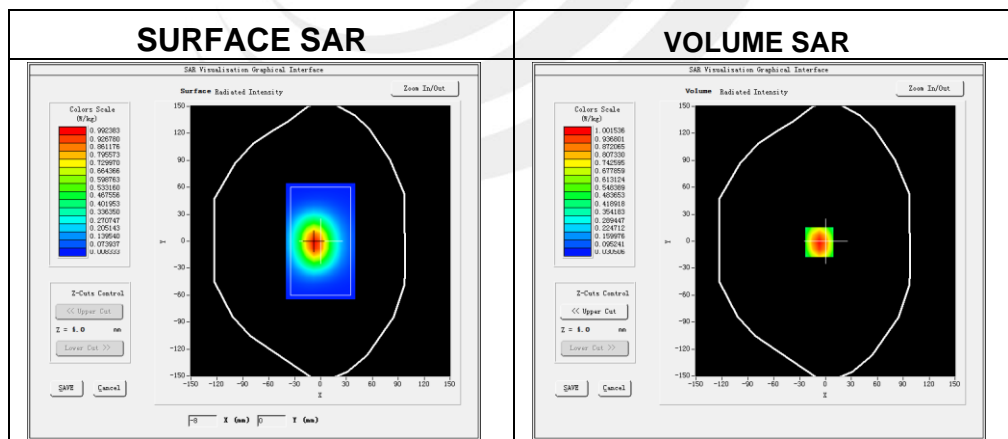
Area scan resolution: dx=8mm, dy=8mm

Zoom scan resolution: dx=8mm, dy=8mm, dz=5mm

Date of measurement: 2021-03-24

Experimental conditions

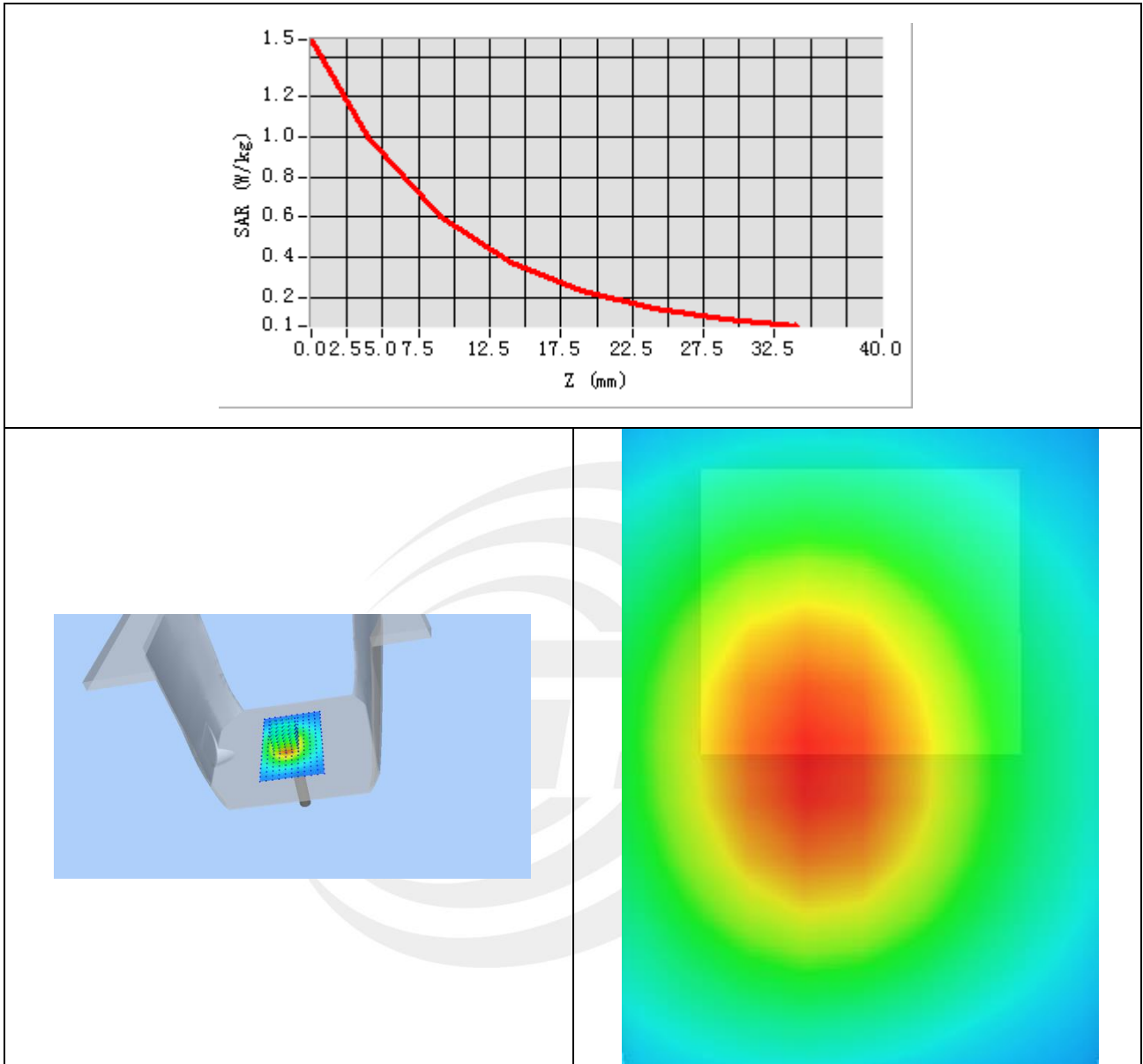
Phantom	Validation plane
Device Position	-
Band	835MHz
Channels	-
Signal	CW
Frequency (MHz)	835MHz
Relative permittivity	42.44
Conductivity (S/m)	0.90
Probe	SN 07/21 EPG0352
ConvF:	1.57
Crest factor:	1:1



Maximum location: X=-7.00, Y=-1.00

SAR 10g (W/Kg)	0.627311
SAR 1g (W/Kg)	0.963042

Z Axis Scan



System Performance Check Data(1800MHz)

Type: Phone measurement (Complete)

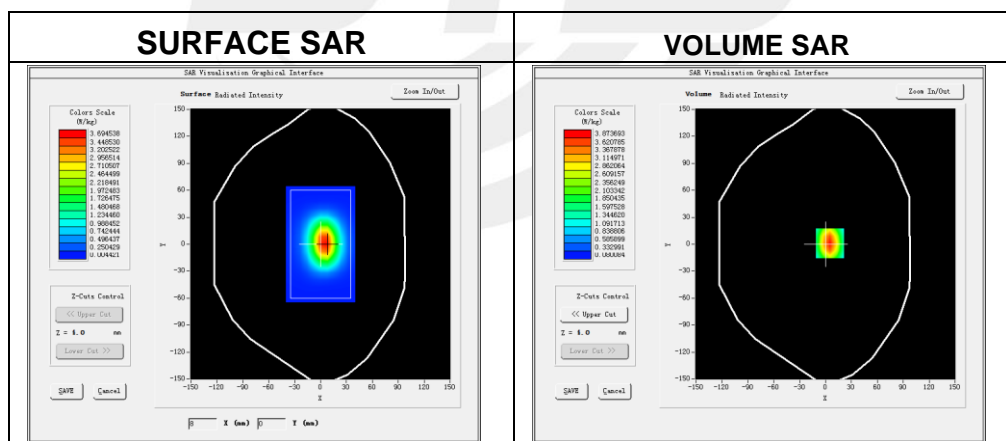
Area scan resolution: dx=8mm, dy=8mm

Zoom scan resolution: dx=8mm, dy=8mm, dz=5mm

Date of measurement: 2021-03-25

Experimental conditions.

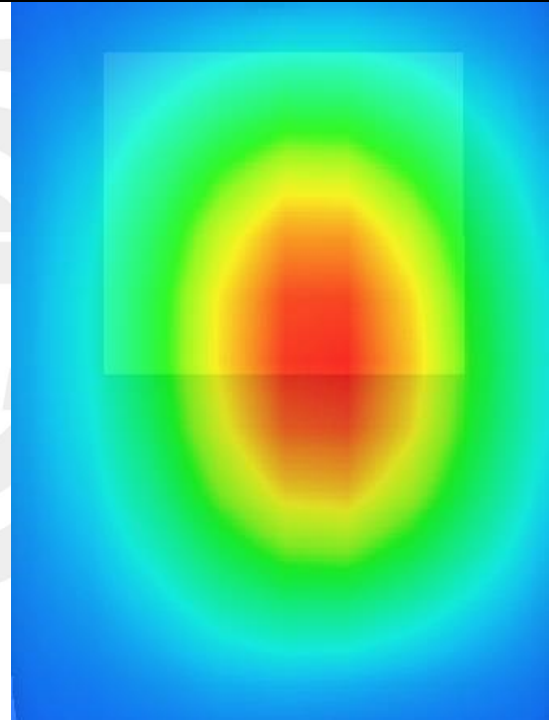
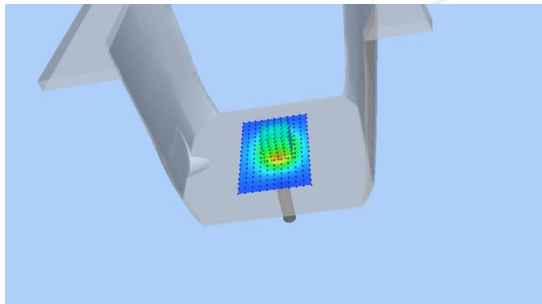
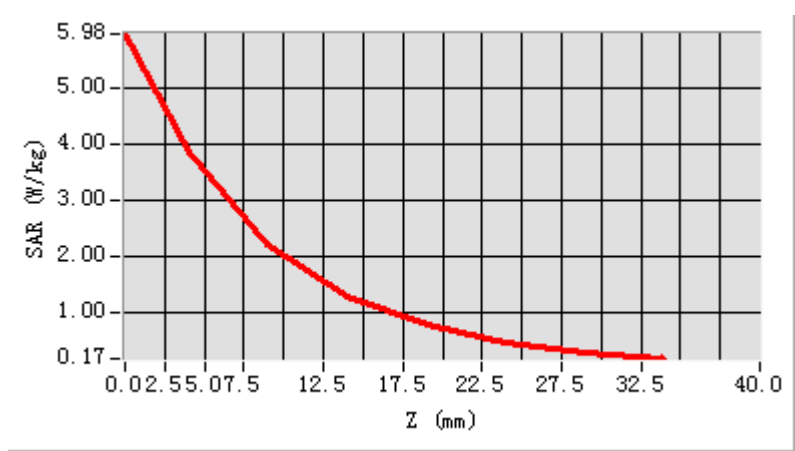
Phantom	Validation plane
Device Position	-
Band	1800MHz
Channels	-
Signal	CW
Frequency (MHz)	1800MHz
Relative permittivity	40.52
Conductivity (S/m)	1.44
Probe	SN 07/21 EPGO352
ConvF	1.60
Crest factor:	1:1



Maximum location: X=5.00, Y=1.00

SAR 10g (W/Kg)	2.075270
SAR 1g (W/Kg)	3.762175

Z Axis Scan



System Performance Check Data (1900MHz)

Type: Phone measurement (Complete)

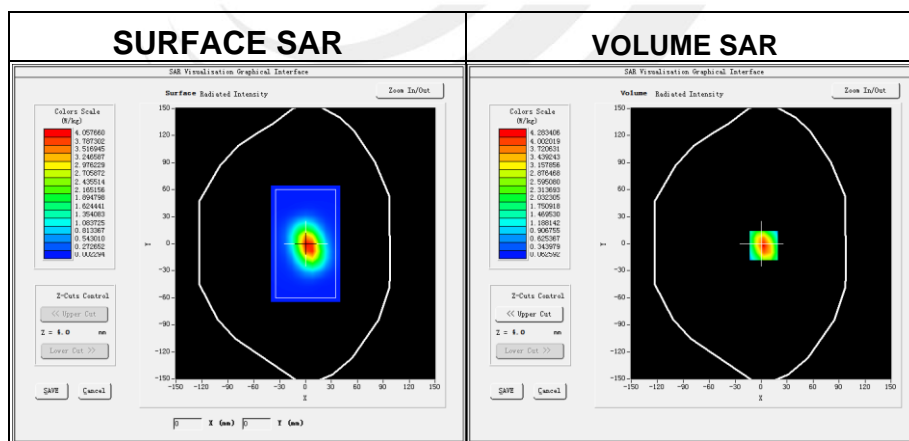
Area scan resolution: dx=8mm, dy=8mm

Zoom scan resolution: dx=8mm, dy=8mm, dz=5mm

Date of measurement: 2021-03-25

Experimental conditions.

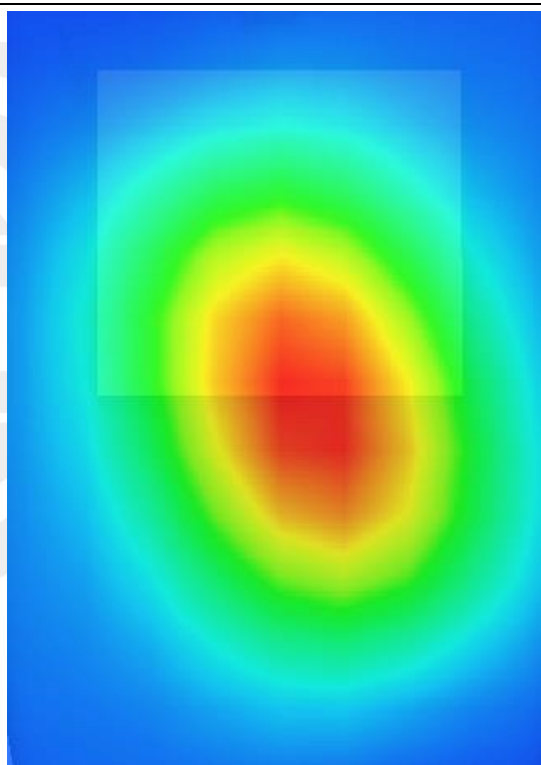
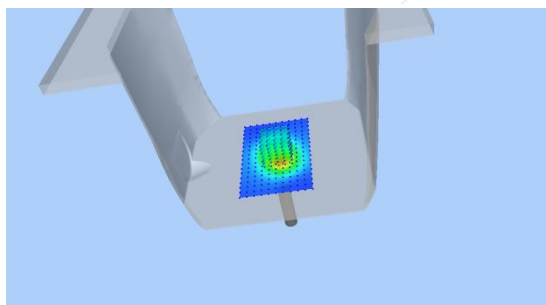
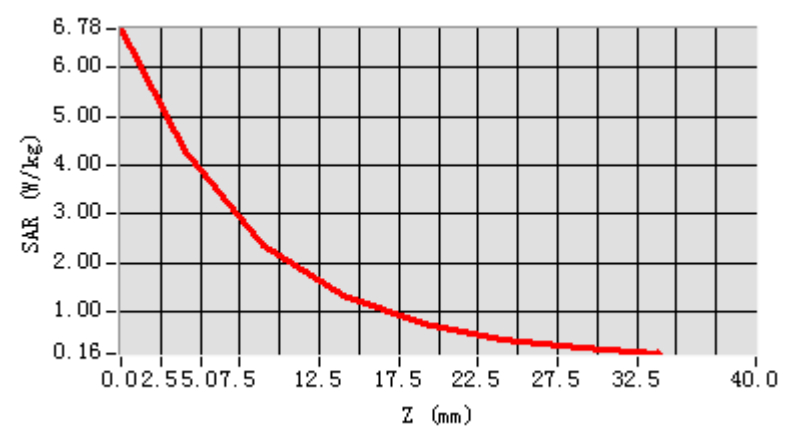
Phantom	Validation plane
Device Position	-
Band	1900MHz
Channels	-
Signal	CW
Frequency (MHz)	1900MHz
Relative permittivity	39.96
Conductivity (S/m)	1.38
Probe	SN 07/21 EPGO352
ConvF:	1.78
Crest factor:	1:1



Maximum location: X=3.00, Y=-2.00

SAR 10g (W/Kg)	2.035720
SAR 1g (W/Kg)	3.878242

Z Axis Scan

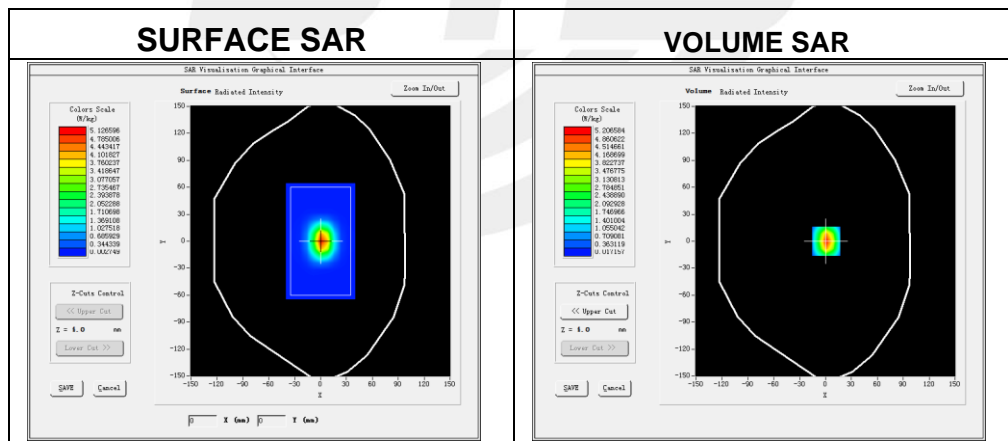


System Performance Check Data (2450MHz)

Type: Phone measurement (Complete)
 Area scan resolution: dx=8mm, dy=8mm
 Zoom scan resolution: dx=8mm, dy=8mm, dz=5mm
 Date of measurement: 2021-03-26

Experimental conditions.

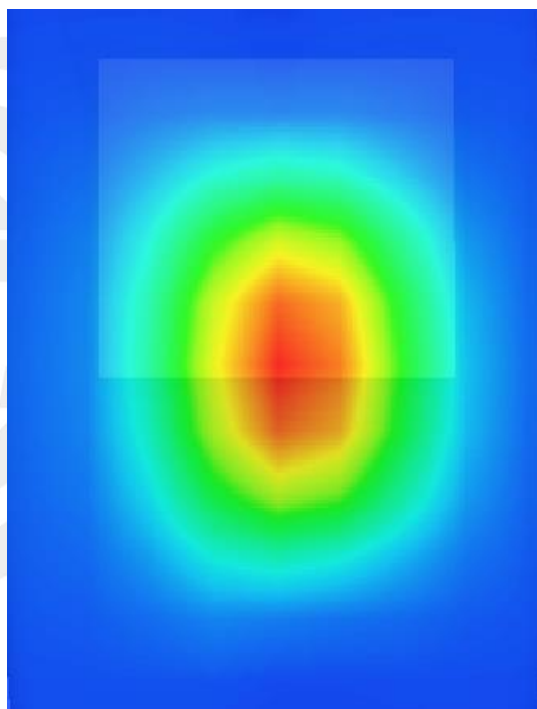
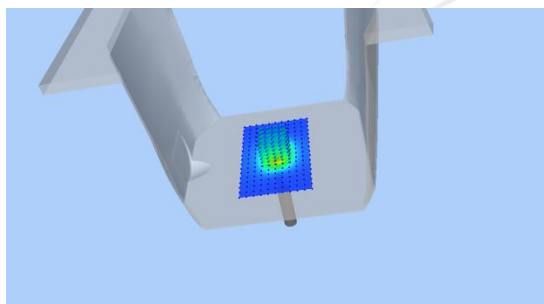
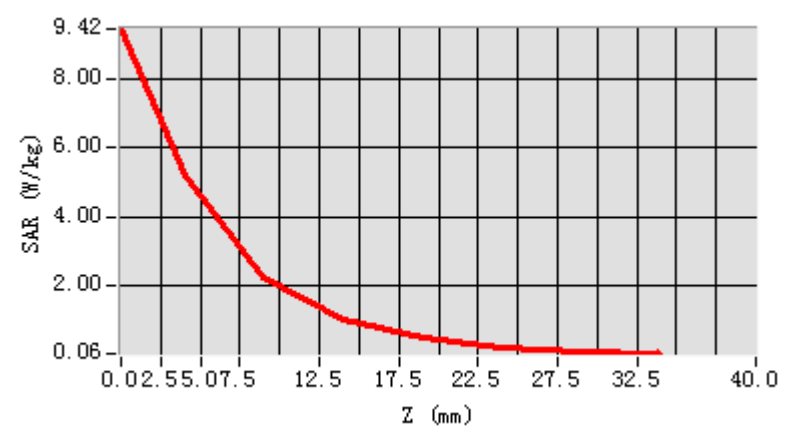
Device Position	Validation plane
Band	2450 MHz
Channels	-
Signal	CW
Frequency (MHz)	2450
Relative permittivity	38.48
Conductivity (S/m)	1.79
Probe	SN 07/21 EPGO352
ConvF	1.75
Crest factor:	1:1



Maximum location: X=1.00, Y=0.00

SAR 10g (W/Kg)	2.367417
SAR 1g (W/Kg)	5.042751

Z Axis Scan



System Performance Check Data(2600MHz)

Type: Phone measurement (Complete)

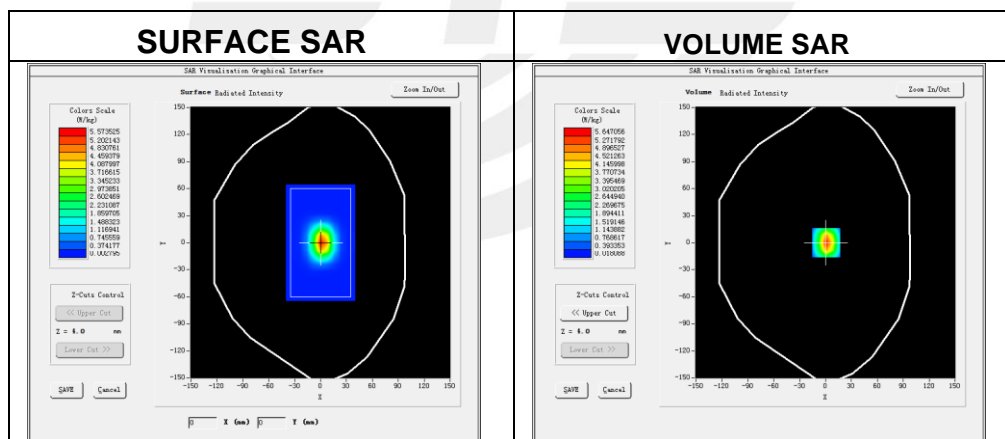
Area scan resolution: dx=8mm,dy=8mm

Zoom scan resolution: dx=8mm, dy=8mm, dz=5mm

Date of measurement: 2021-03-29

Experimental conditions.

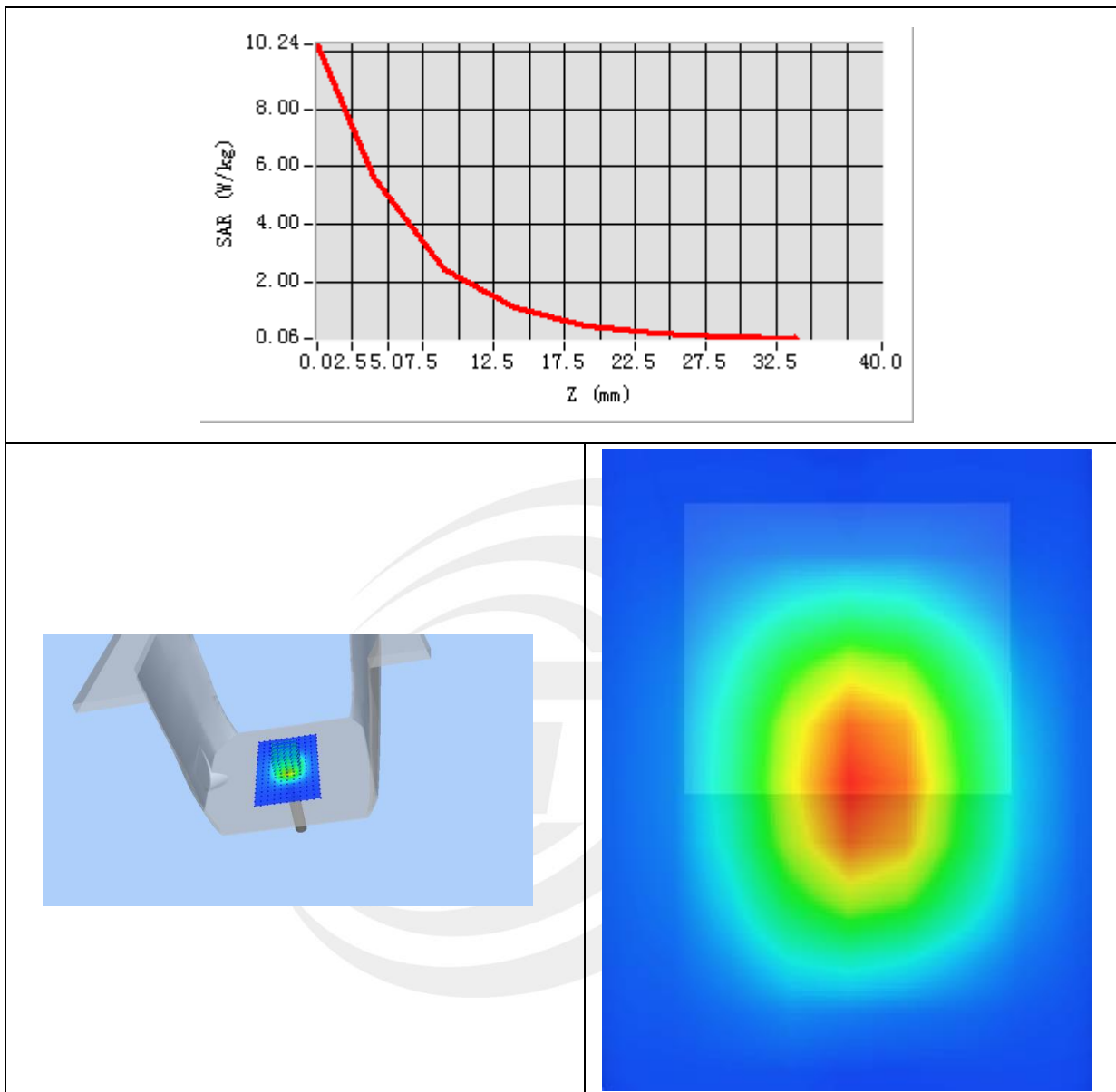
Device Position	Validation plane
Band	2600 MHz
Channels	-
Signal	CW
Frequency (MHz)	2600
Relative permittivity	37.36
Conductivity (S/m)	1.95
Probe	SN 07/21 EPGO352
ConvF	1.63
Crest factor:	1:1



Maximum location: X=1.00, Y=0.00

SAR 10g (W/Kg)	2.462737
SAR 1g (W/Kg)	5.479027

Z Axis Scan



System Performance Check Data(5200MHz)

Type: Dipole measurement (Complete)

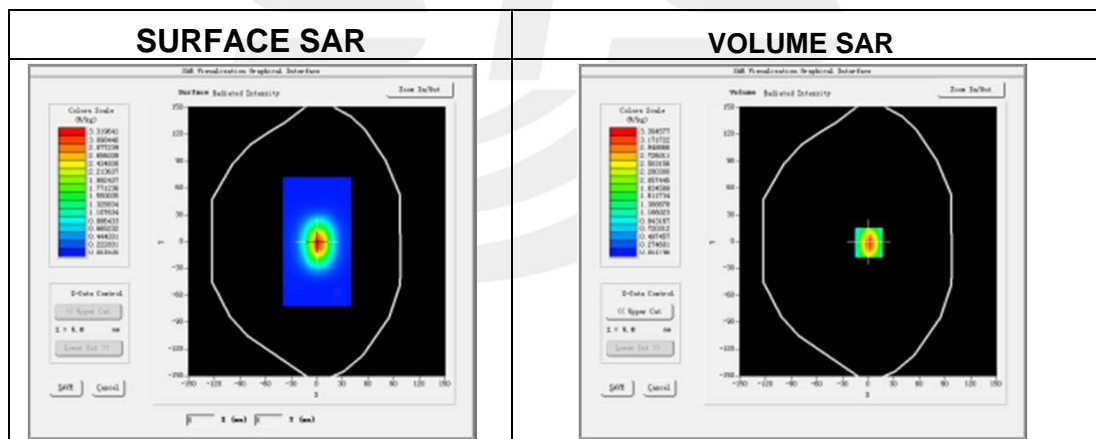
Area scan resolution: dx=8mm,dy=8mm

Zoom scan resolution: dx=4mm, dy=4mm, dz=2mm

Date of measurement: 2021-04-29

Experimental conditions.

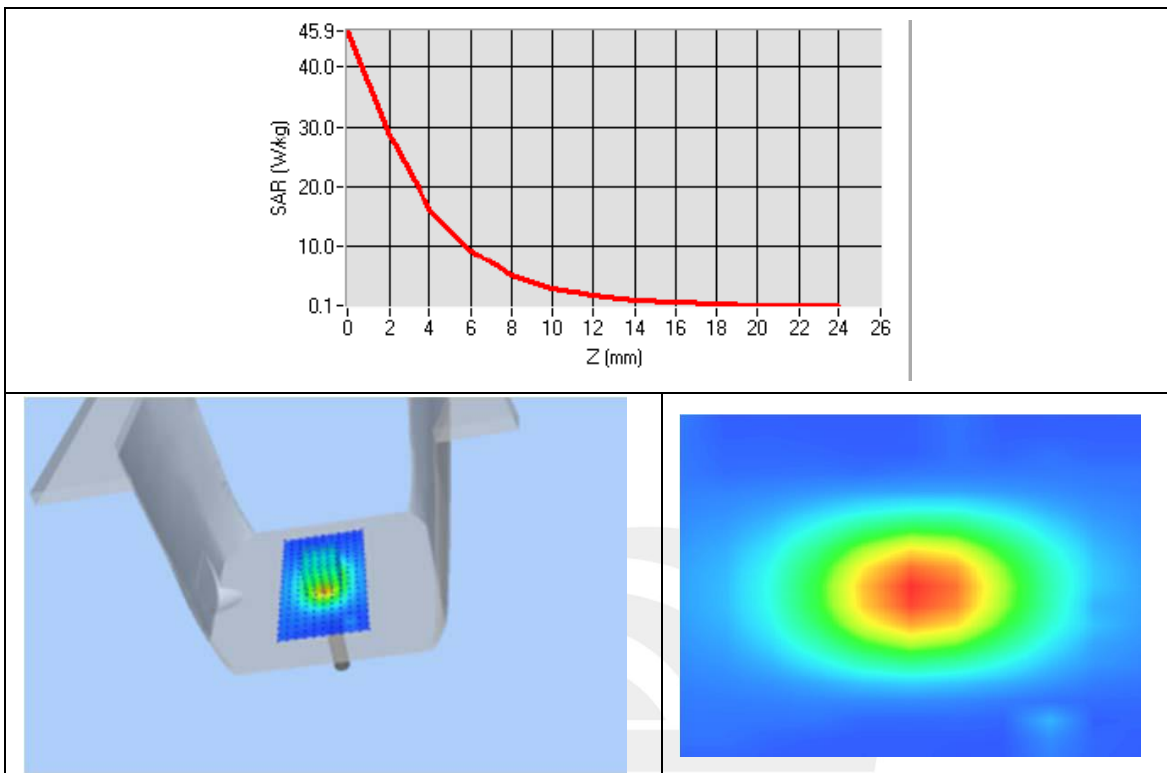
Device Position	Validation plane
Band	5200 MHz
Channels	-
Signal	CW
Frequency (MHz)	5200
Relative permittivity	34.79
Conductivity (S/m)	4.69
Probe	SN 07/21 EPGO352
ConvF	1.47
Crest factor:	1:1



Maximum location: X=7.00, Y=2.00

SAR 10g (W/Kg)	5.712730
SAR 1g (W/Kg)	15.555375

Z Axis Scan



System Performance Check Data(5300MHz)

Type: Dipole measurement (Complete)

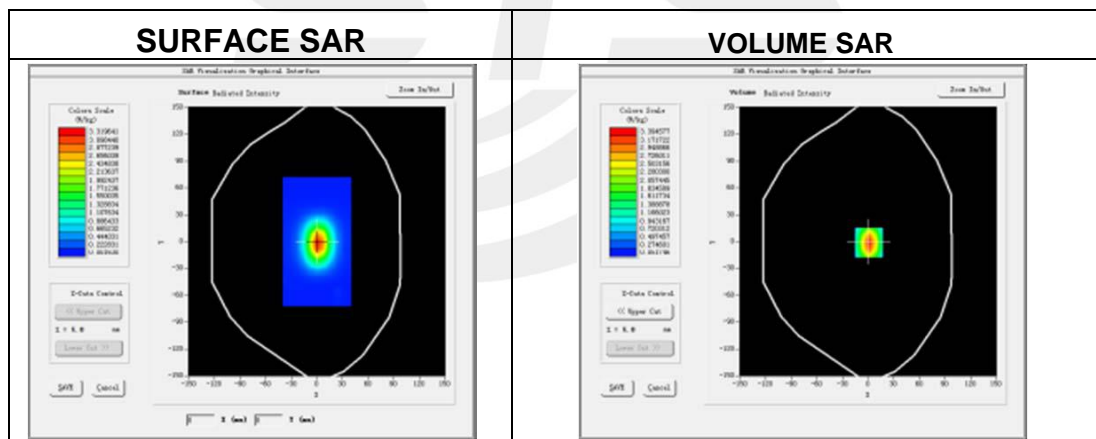
Area scan resolution: dx=8mm,dy=8mm

Zoom scan resolution: dx=4mm, dy=4mm, dz=2mm

Date of measurement: 2021-04-29

Experimental conditions.

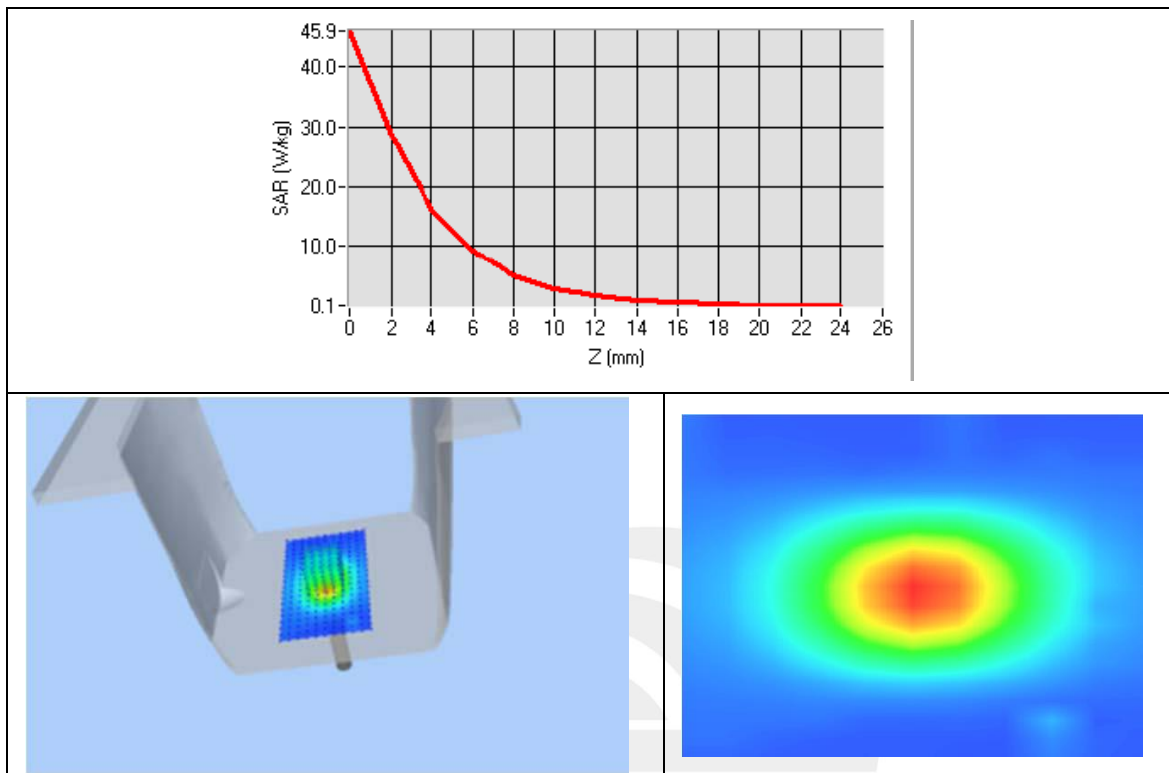
Device Position	Validation plane
Band	5300 MHz
Channels	-
Signal	CW
Frequency (MHz)	5300
Relative permittivity	36.38
Conductivity (S/m)	4.86
Probe	SN 07/21 EPGO352
ConvF	1.65
Crest factor:	1:1



Maximum location: X=7.00, Y=2.00

SAR 10g (W/Kg)	5.831740
SAR 1g (W/Kg)	16.276431

Z Axis Scan



System Performance Check Data(5800MHz)

Type: Dipole measurement (Complete)

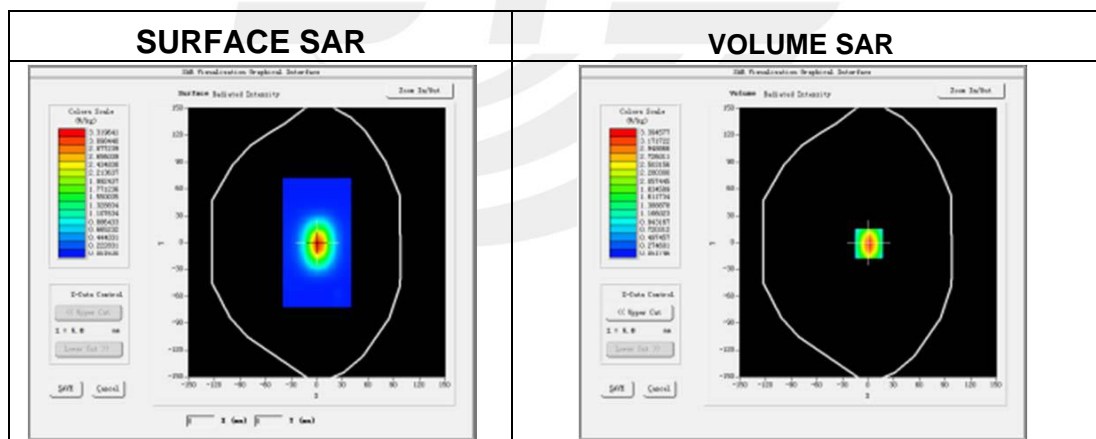
Area scan resolution: dx=8mm,dy=8mm

Zoom scan resolution: dx=8mm, dy=8mm, dz=5mm

Date of measurement: 2021-04-29

Experimental conditions.

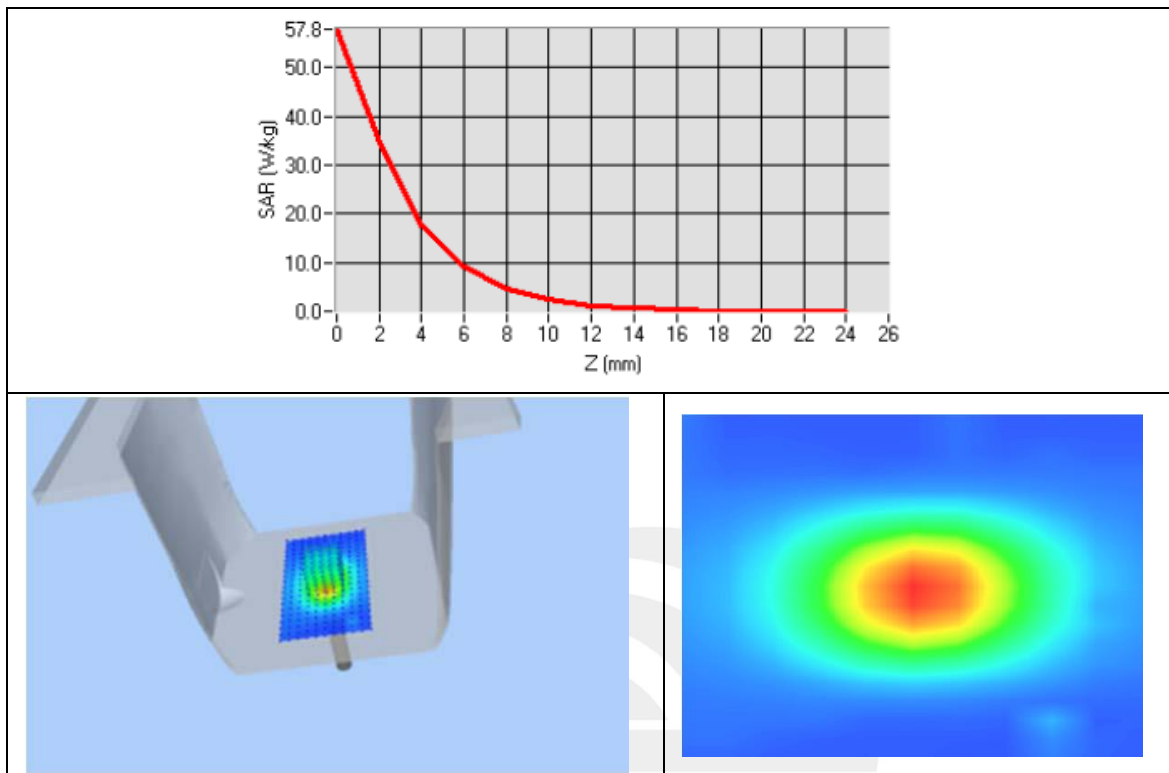
Device Position	Validation plane
Band	5800 MHz
Channels	-
Signal	CW
Frequency (MHz)	5800
Relative permittivity	35.81
Conductivity (S/m)	5.25
Probe	SN 07/21 EPGO352
ConvF	1.64
Crest factor:	1:1



Maximum location: X=7.00, Y=2.00

SAR 10g (W/Kg)	5.983710
SAR 1g (W/Kg)	18.075124

Z Axis Scan



Appendix B. SAR Test Plots

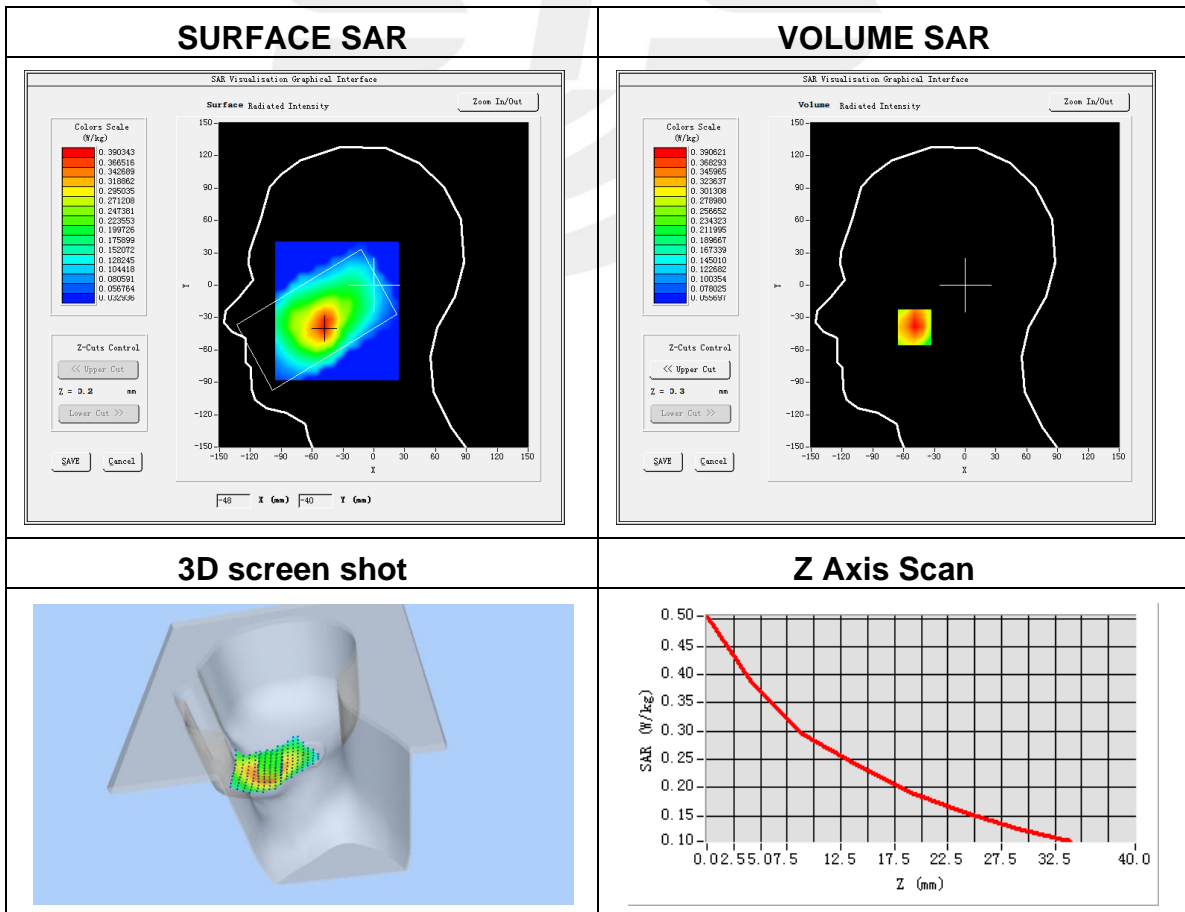
Plot 1: DUT: Smart Phone; EUT Model: HPP-L55B

Test Date	2021-03-24
Probe	SN 07/21 EPGO352
Area Scan	dx=8mm, dy=8mm, h= 5.00 mm
Zoom Scan	5x5x7, dx=8mm, dy=8mm, dz=5mm, Complete/ndx=8mm, dy=8mm, h= 5.00 mm
Phantom	Right head
Device Position	Cheek
Band	GPRS 850
Channels	Middle
Signal	Duty Cycle: 2.00 (Crest factor: 2.0)
Frequency (MHz)	836.6
Relative permittivity (real part)	41.50
Conductivity (S/m)	0.90

Maximum location: X=-49.00, Y=-39.00

SAR Peak: 0.51 W/kg

SAR 10g (W/Kg)	0.271813
SAR 1g (W/Kg)	0.376432



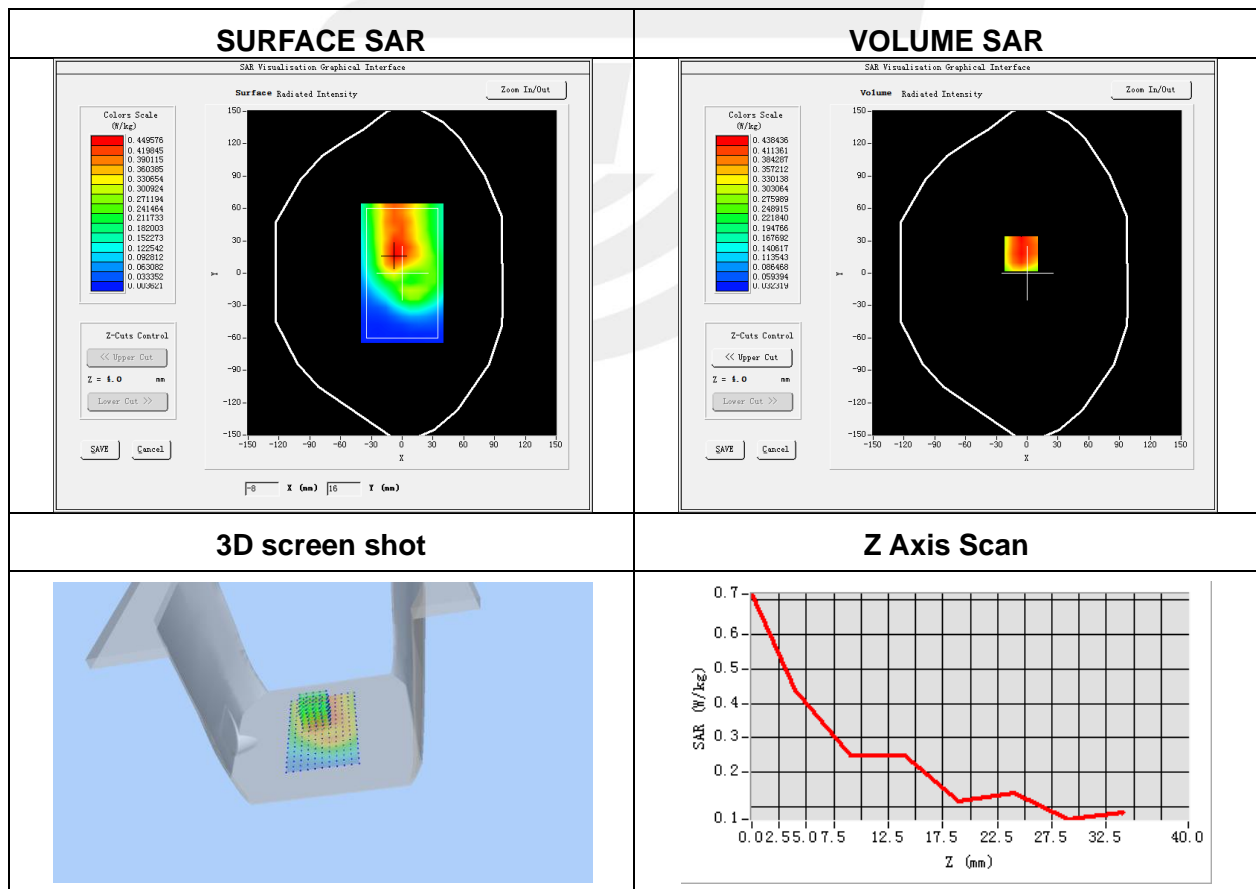
Plot 2: DUT: Smart Phone; EUT Model: HPP-L55B

Test Date	2021-03-24
Probe	SN 07/21 EPGO352
Area Scan	dx=8mm, dy=8mm, h= 5.00 mm
Zoom Scan	5x5x7, dx=8mm, dy=8mm, dz=5mm, Complete/ndx=8mm, dy=8mm, h= 5.00 mm
Phantom	Validation plane
Device Position	Back Side
Band	GPRS 850
Channels	Middle
Signal	Duty Cycle: 2.00 (Crest factor: 2.0)
Frequency (MHz)	836.6
Relative permittivity (real part)	42.40
Conductivity (S/m)	0.89

Maximum location: X=-6.00, Y=18.00

SAR Peak: 057 W/kg

SAR 10g (W/Kg)	0.302768
SAR 1g (W/Kg)	0.419786



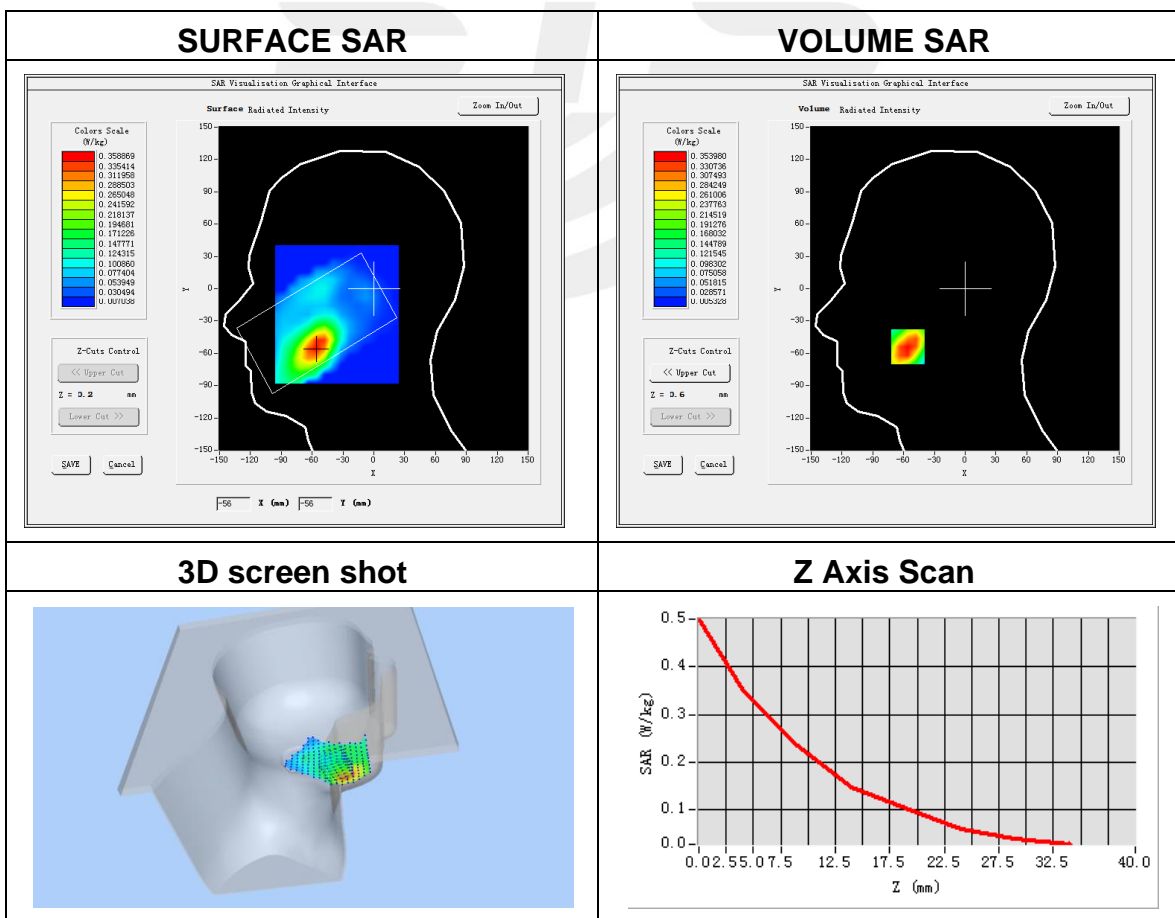
Plot 3: DUT: Smart Phone; EUT Model: HPP-L55B

Test Date	2021-03-25
Probe	SN 07/21 EPGO352
Area Scan	dx=8mm, dy=8mm, h= 5.00 mm
Zoom Scan	5x5x7, dx=8mm, dy=8mm, dz=5mm, Complete/ndx=8mm, dy=8mm, h= 5.00 mm
Phantom	Left head
Device Position	Cheek
Band	GPRS 1900
Channels	Mid
Signal	Duty Cycle: 2.00 (Crest factor: 2.0)
Frequency (MHz)	1880
Relative permittivity (real part)	40.05
Conductivity (S/m)	1.37

Maximum location: X=-56.00, Y=54.00

SAR Peak: 0.55 W/kg

SAR 10g (W/Kg)	0.201127
SAR 1g (W/Kg)	0.346930



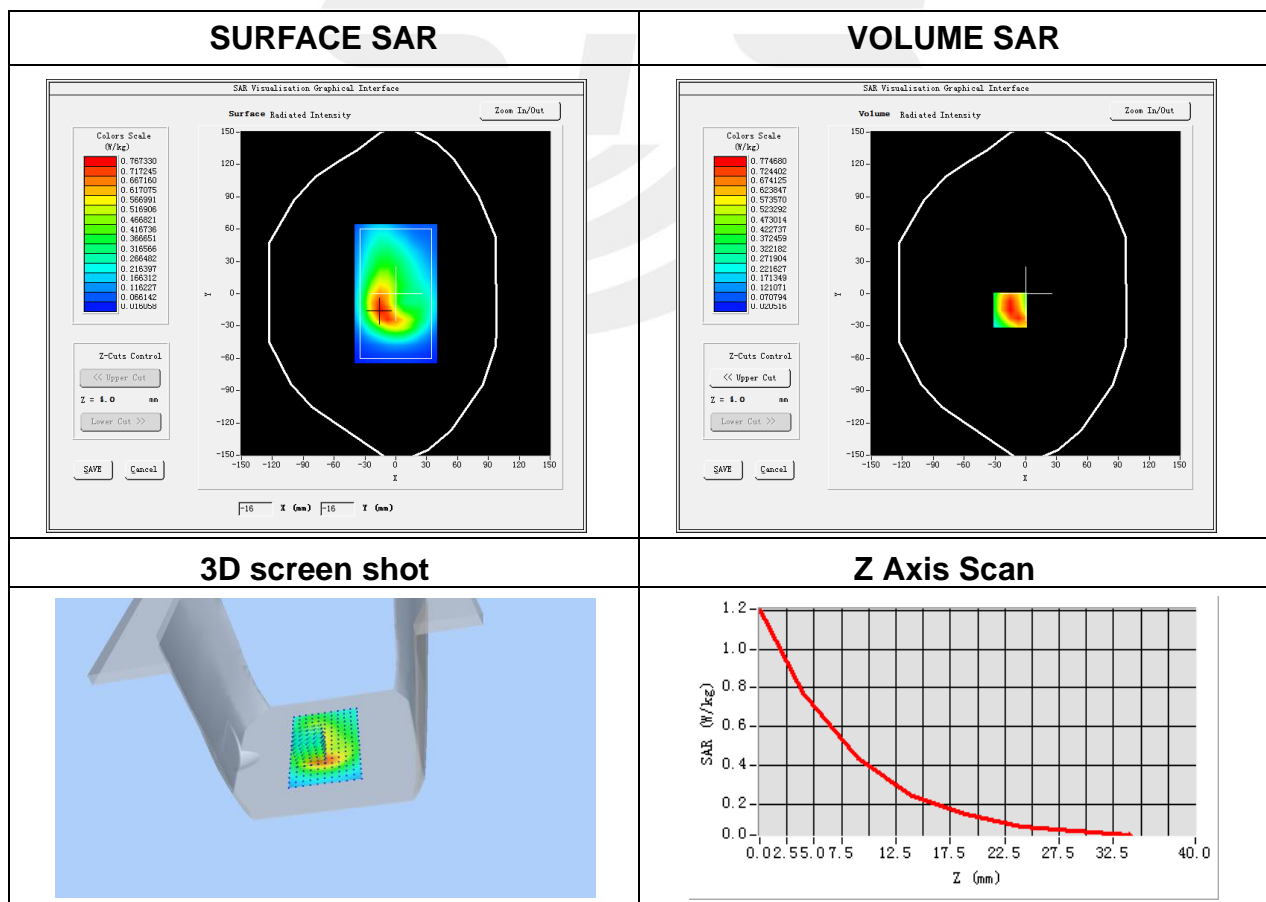
Plot 4: DUT: Smart Phone; EUT Model: HPP-L55B

Test Date	2021-03-25
Probe	SN 07/21 EPGO352
Area Scan	dx=8mm, dy=8mm, h= 5.00 mm
Zoom Scan	5x5x7, dx=8mm, dy=8mm, dz=5mm, Complete/ndx=8mm, dy=8mm, h= 5.00 mm
Phantom	Validation plane
Device Position	Front side
Band	GPRS 1900
Channels	Mid
Signal	Duty Cycle: 2.00 (Crest factor: 2.0)
Frequency (MHz)	1880
Relative permittivity (real part)	40.05
Conductivity (S/m)	1.37

Maximum location: X=-15.00, Y=-15.00

SAR Peak: 1.24 W/kg

SAR 10g (W/Kg)	0.406070
SAR 1g (W/Kg)	0.736562



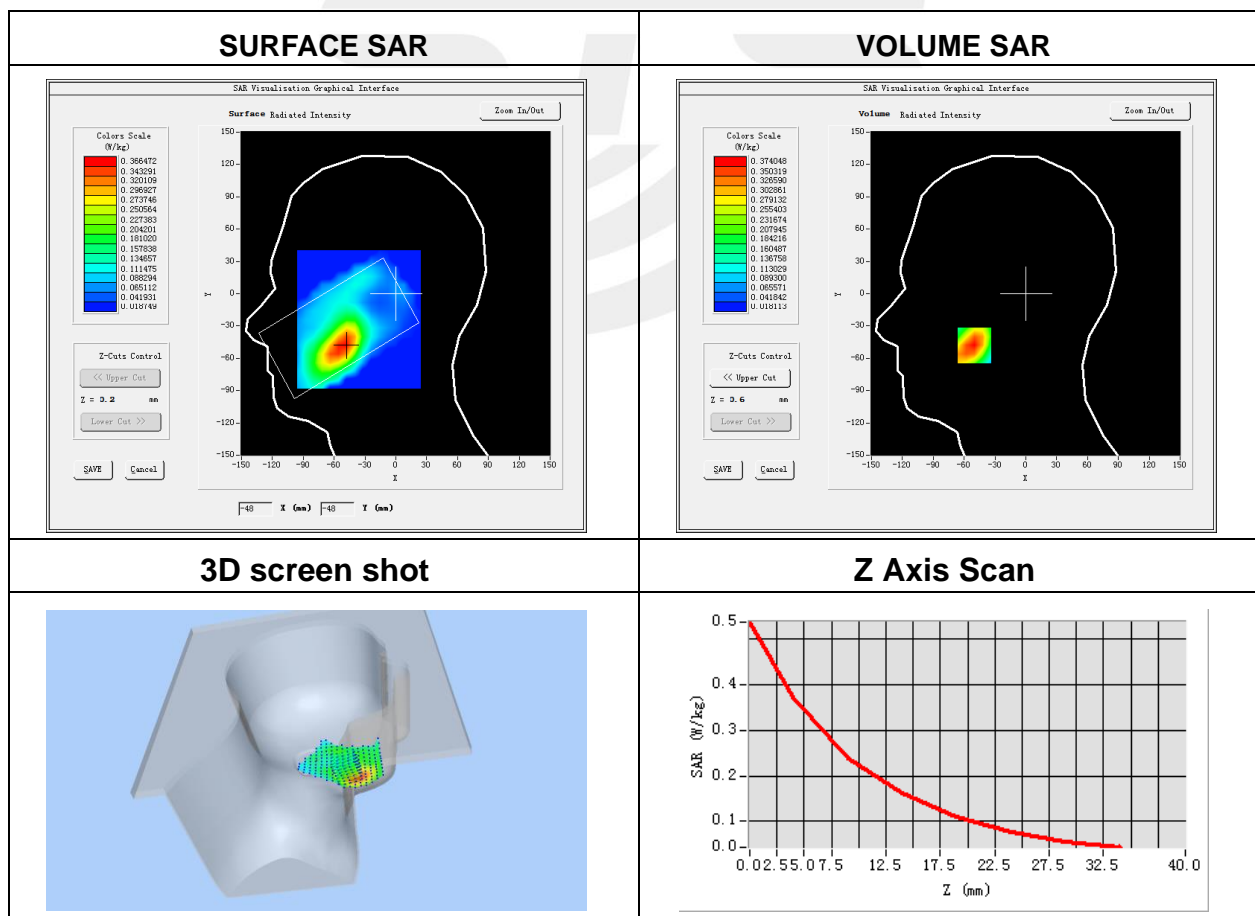
Plot 5: DUT: Smart Phone; EUT Model: HPP-L55B

Test Date	2021-03-25
Probe	SN 07/21 EPGO352
Area Scan	dx=8mm, dy=8mm, h= 5.00 mm
Zoom Scan	5x5x7, dx=8mm, dy=8mm, dz=5mm, Complete/ndx=8mm, dy=8mm, h= 5.00 mm
Phantom	Left head
Device Position	Cheek
Band	WCDMA II
Channels	Low
Signal	WCDMA (Crest factor: 1.0)
Frequency (MHz)	1852.4
Relative permittivity (real part)	40.05
Conductivity (S/m)	1.37

Maximum location: X=-50.00, Y=-48.00

SAR Peak: 0.54 W/kg

SAR 10g (W/Kg)	0.217283
SAR 1g (W/Kg)	0.362187



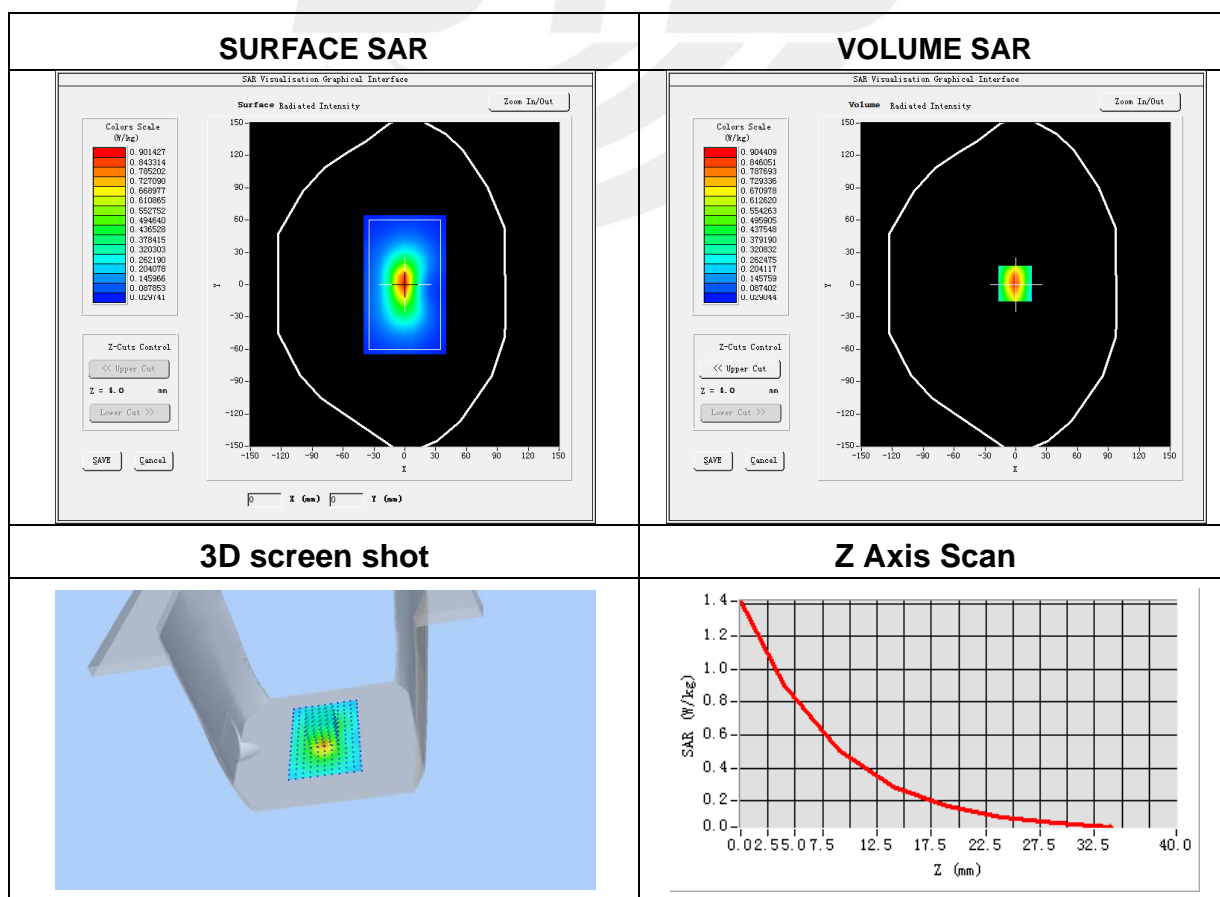
Plot 6: DUT: Smart Phone; EUT Model: HPP-L55B

Test Date	2020-09-24
Probe	SN 07/21 EPGO352
ConvF	1.84
Area Scan	dx=8mm, dy=8mm, h= 5.00 mm
Zoom Scan	5x5x7, dx=8mm, dy=8mm, dz=5mm, Complete/ndx=8mm, dy=8mm, h= 5.00 mm
Phantom	Validation plane
Device Position	Bottom Side
Band	WCDMA II
Channels	Low
Signal	WCDMA (Crest factor: 1.0)
Frequency (MHz)	1852.4
Relative permittivity (real part)	40.05
Conductivity (S/m)	1.37

Maximum location: X=-1.00, Y=1.00

SAR Peak: 1.41 W/kg

SAR 10g (W/Kg)	0.432787
SAR 1g (W/Kg)	0.844865



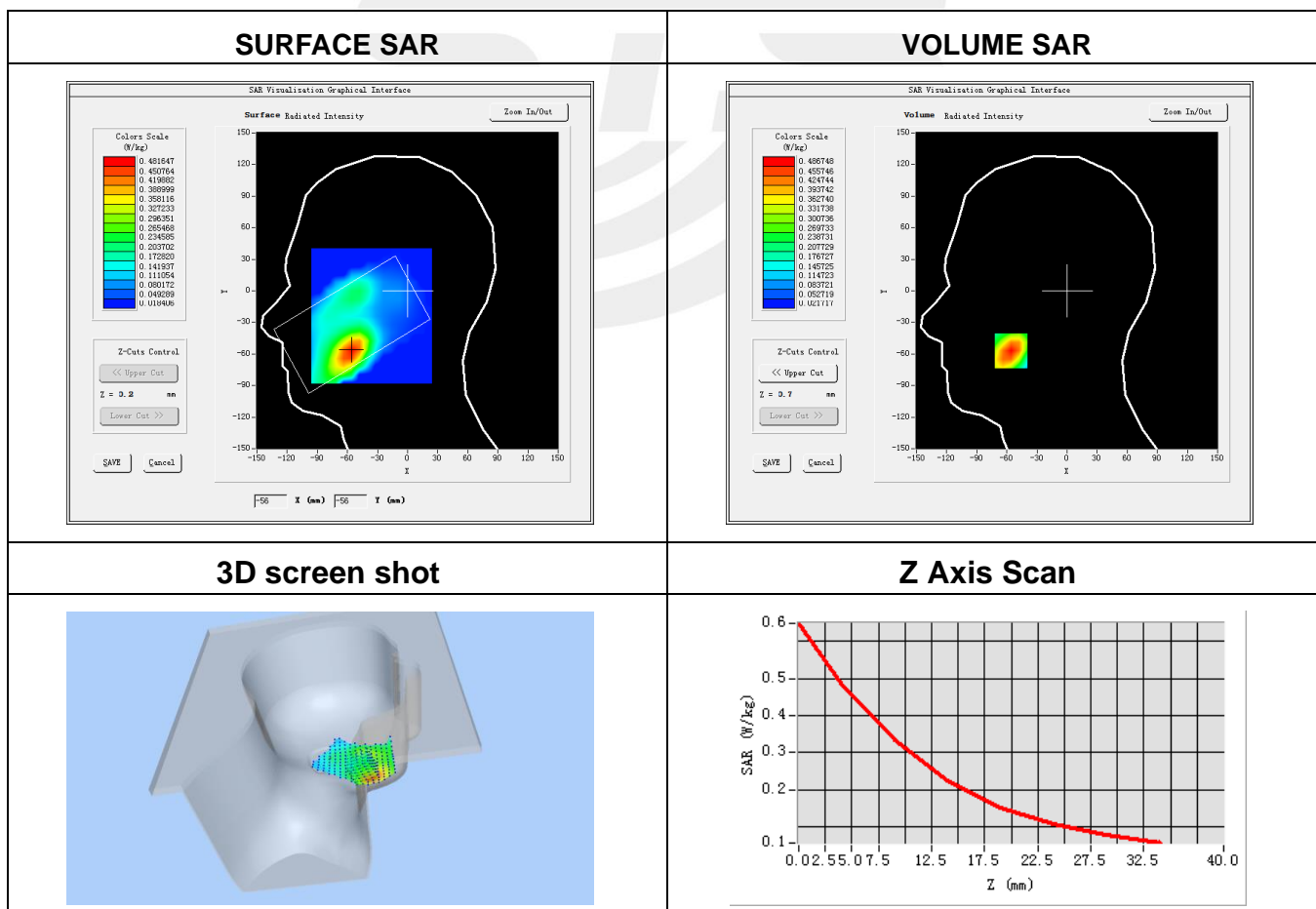
Plot 7: DUT: Smart Phone; EUT Model: HPP-L55B

Test Date	2021-03-25
Probe	SN 07/21 EPGO352
Area Scan	dx=8mm, dy=8mm, h= 5.00 mm
Zoom Scan	5x5x7, dx=8mm, dy=8mm, dz=5mm, Complete/ndx=8mm, dy=8mm, h= 5.00 mm
Phantom	Left head
Device Position	Cheek
Band	WCDMA IV
Channels	High
Signal	WCDMA (Crest factor: 1.0)
Frequency (MHz)	1752.4
Relative permittivity (real part)	39.86
Conductivity (S/m)	1.33

Maximum location: X=-56.00, Y=-57.00

SAR Peak: 0.66 W/kg

SAR 10g (W/Kg)	0.283933
SAR 1g (W/Kg)	0.460812



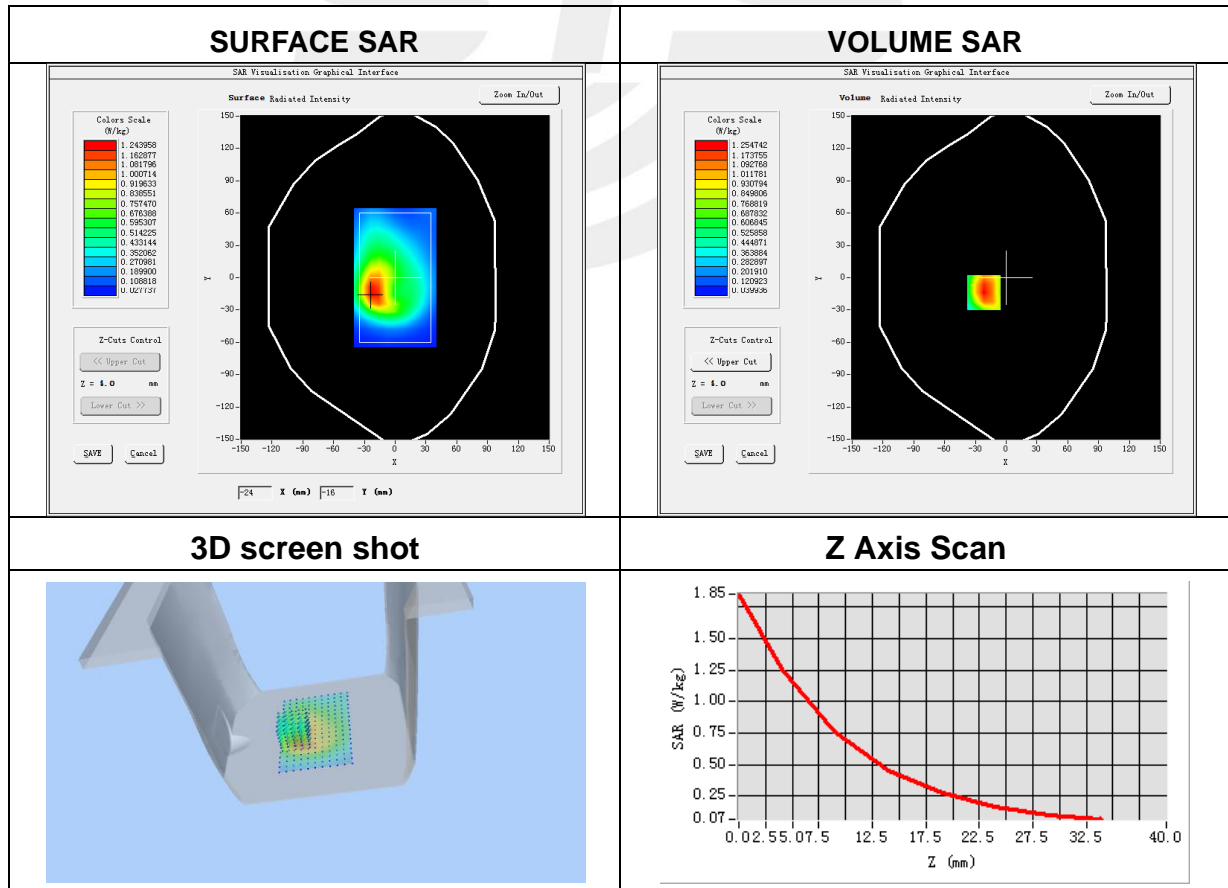
Plot 8: DUT: Smart Phone; EUT Model: HPP-L55B

Test Date	2021-03-25
Probe	SN 07/21 EPGO352
ConvF	1.60
Area Scan	dx=8mm, dy=8mm, h= 5.00 mm
Zoom Scan	5x5x7, dx=8mm, dy=8mm, dz=5mm, Complete/ndx=8mm, dy=8mm, h= 5.00 mm
Phantom	Validation plane
Device Position	Front Side
Band	WCDMA IV
Channels	High
Signal	WCDMA (Crest factor: 1.0)
Frequency (MHz)	1752.4
Relative permittivity (real part)	39.86
Conductivity (S/m)	1.33

Maximum location: X=-22.00, Y=-14.00

SAR Peak: 1.85 W/kg

SAR 10g (W/Kg)	0.692055
SAR 1g (W/Kg)	1.199571



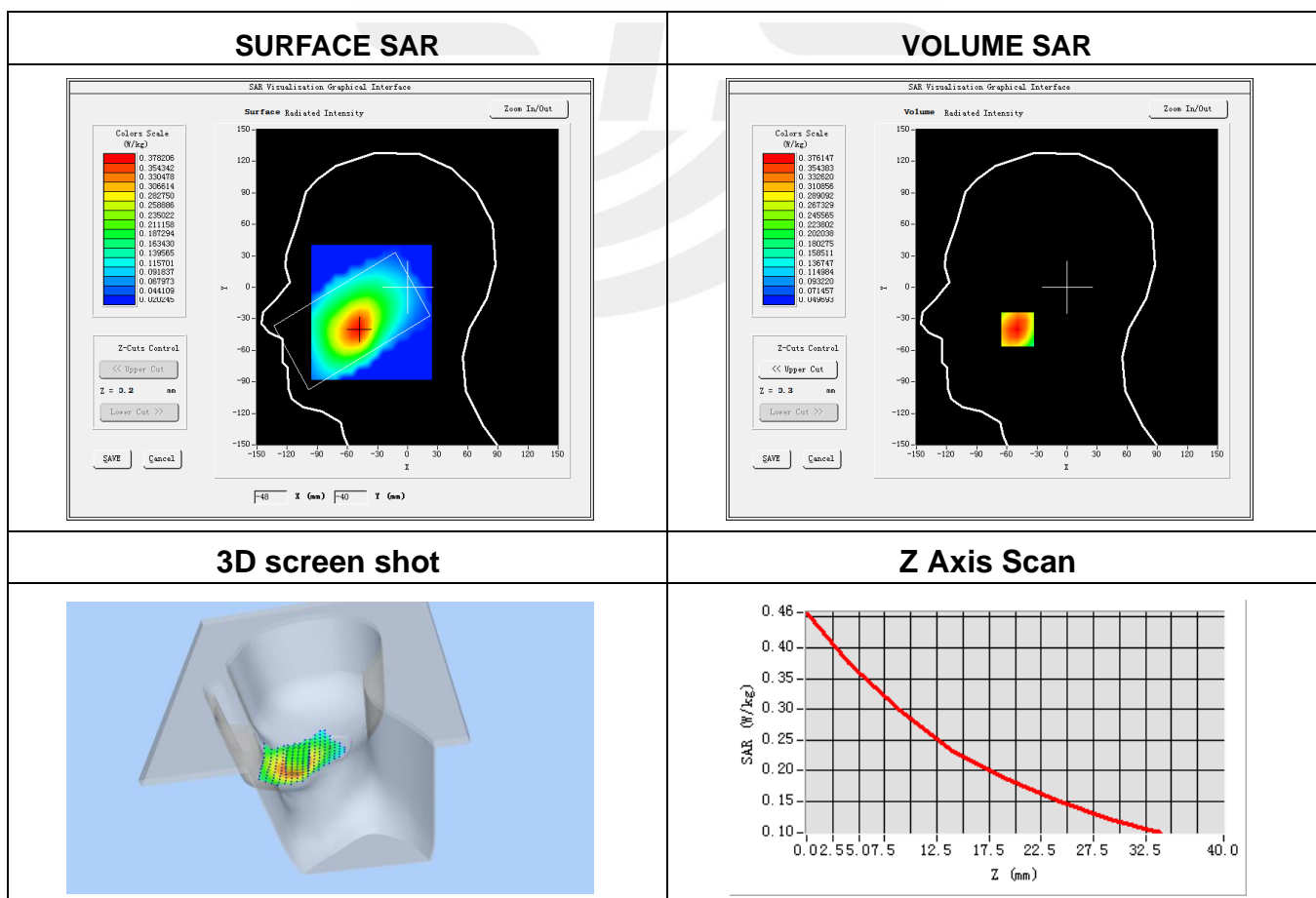
Plot 9: DUT: Smart Phone; EUT Model: HPP-L55B

Test Date	2021-03-24
Probe	SN 07/21 EPGO352
Area Scan	dx=8mm, dy=8mm, h= 5.00 mm
Zoom Scan	5x5x7, dx=8mm, dy=8mm, dz=5mm, Complete/ndx=8mm, dy=8mm, h= 5.00 mm
Phantom	Right head
Device Position	Cheek
Band	WCDMA V
Channels	High
Signal	WCDMA (Crest factor: 1.0)
Frequency (MHz)	846.6
Relative permittivity (real part)	42.40
Conductivity (S/m)	0.89

Maximum location: X=-49.00, Y=-40.00

SAR Peak: 0.47 W/kg

SAR 10g (W/Kg)	0.271885
SAR 1g (W/Kg)	0.366610



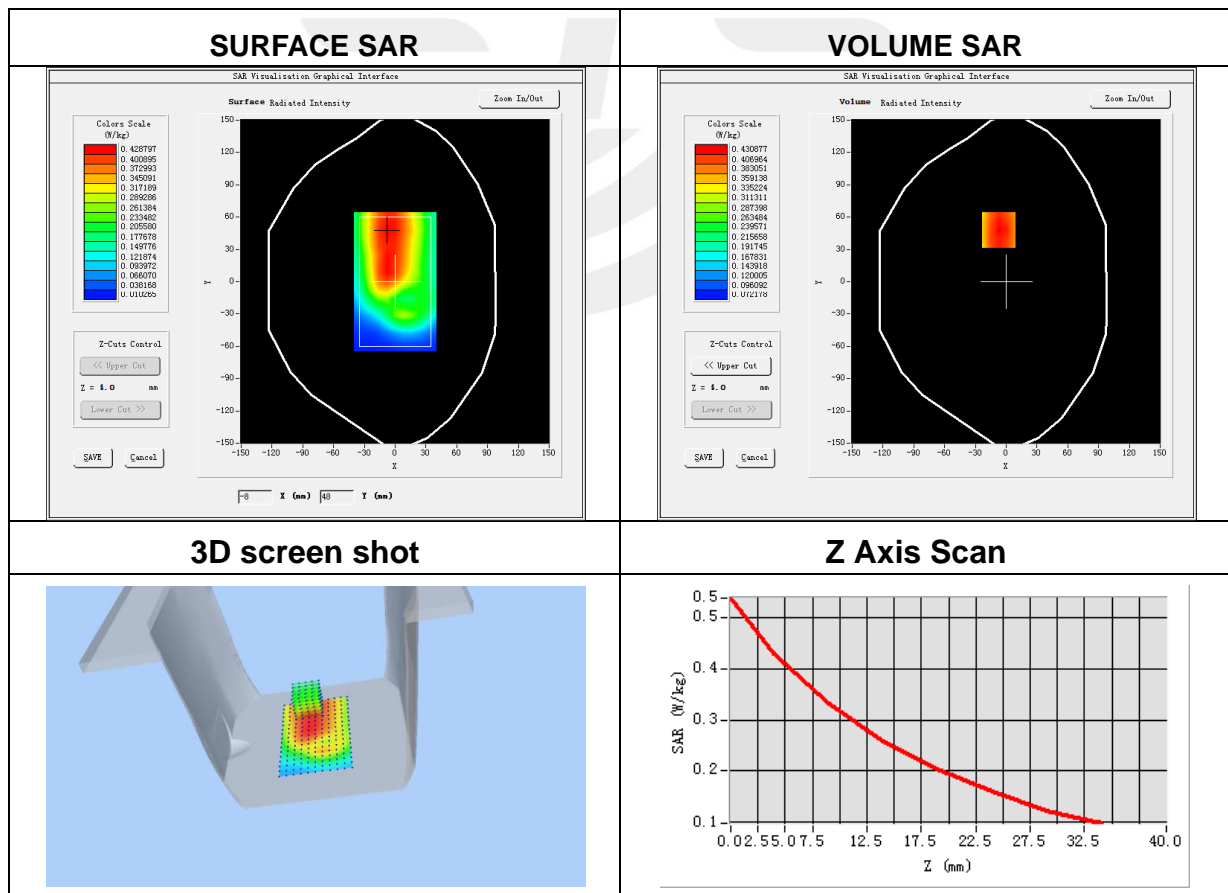
Plot 10: DUT: Smart Phone; EUT Model: HPP-L55B

Test Date	2021-03-24
Probe	SN 07/21 EPGO352
Area Scan	dx=8mm, dy=8mm, h= 5.00 mm
Zoom Scan	5x5x7, dx=8mm, dy=8mm, dz=5mm, Complete/ndx=8mm, dy=8mm, h= 5.00 mm
Phantom	Validation plane
Device Position	Back Side
Band	WCDMA V
Channels	High
Signal	WCDMA (Crest factor: 1.0)
Frequency (MHz)	846.6
Relative permittivity (real part)	42.40
Conductivity (S/m)	0.89

Maximum location: X=-7.00, Y=48.00

SAR Peak: 0.54 W/kg

SAR 10g (W/Kg)	0.314670
SAR 1g (W/Kg)	0.421437



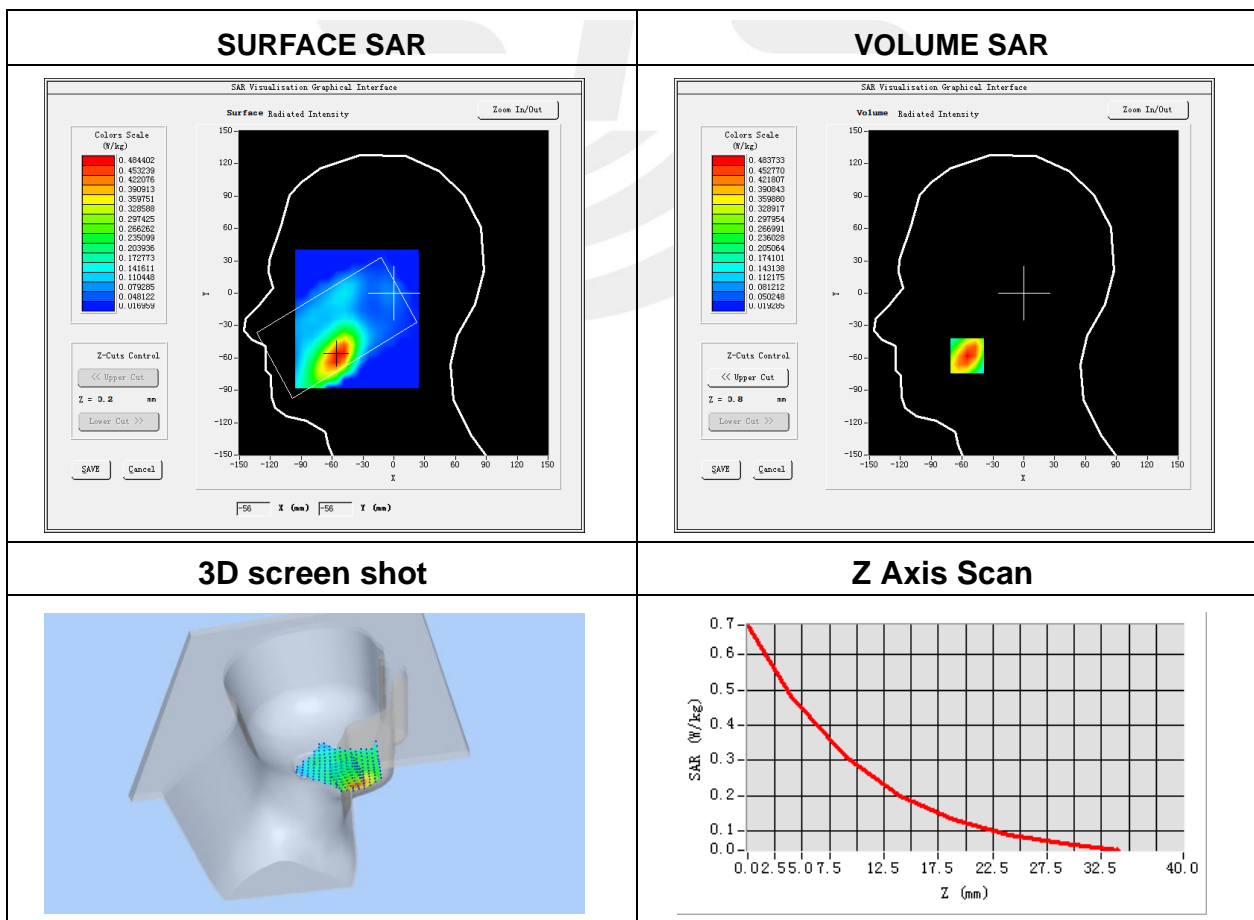
Plot 11: DUT: Smart Phone; EUT Model: HPP-L55B

Test Date	2021-03-25
Probe	SN 07/21 EPGO352
Area Scan	dx=8mm, dy=8mm, h= 5.00 mm
Zoom Scan	5x5x7, dx=8mm, dy=8mm, dz=5mm, Complete/ndx=8mm, dy=8mm, h= 5.00 mm
Phantom	Left head
Device Position	Cheek
Band	LTE Band 2 (RB 1)
Channels	Mid
Signal	LTE (Crest factor: 1.0)
Frequency (MHz)	1880
Relative permittivity (real part)	40.05
Conductivity (S/m)	1.37

Maximum location: X=-55.00, Y=-58.00

SAR Peak: 0.71 W/kg

SAR 10g (W/Kg)	0.267108
SAR 1g (W/Kg)	0.458516



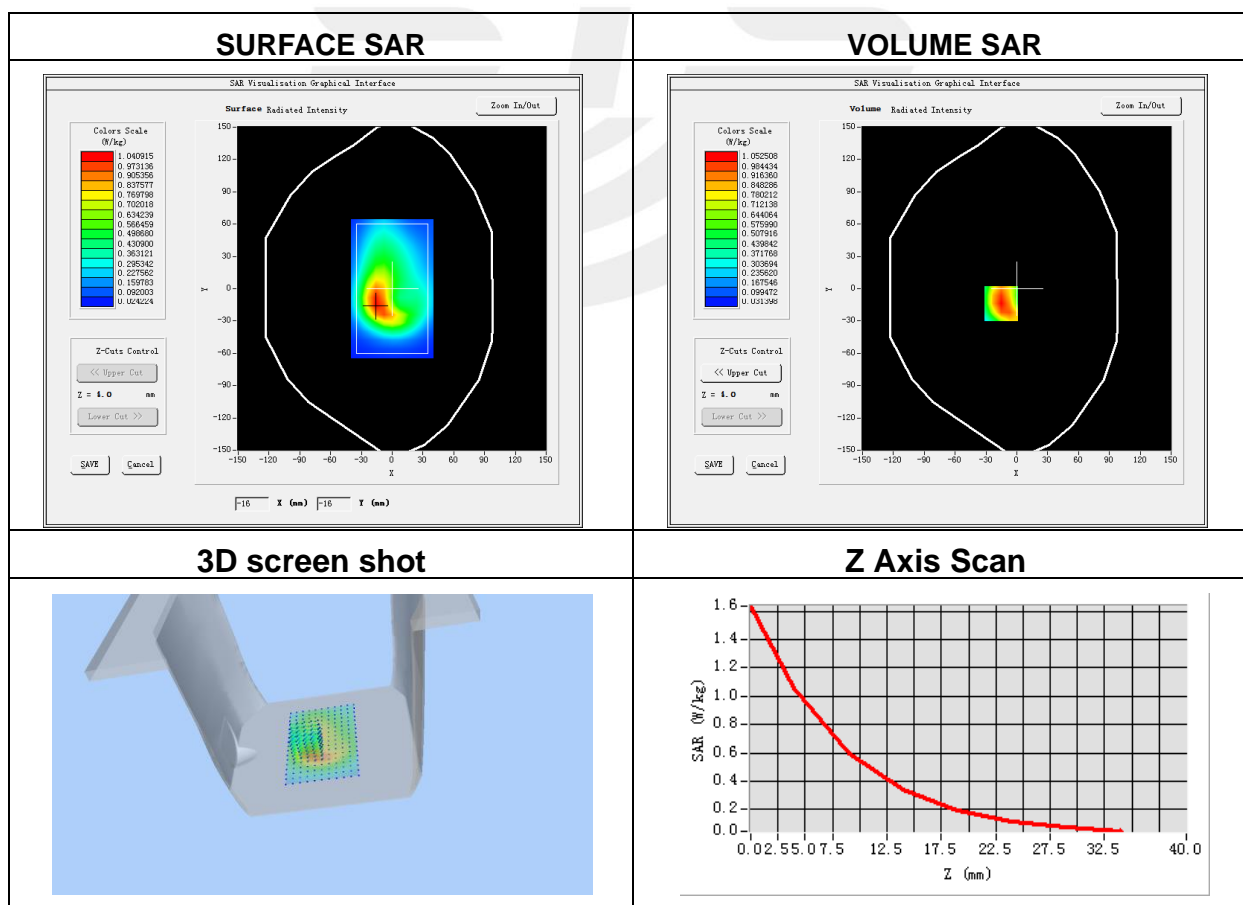
Plot 12: DUT: Smart Phone; EUT Model: HPP-L55B

Test Date	2021-03-25
Probe	SN 07/21 EPGO352
Area Scan	dx=8mm, dy=8mm, h= 5.00 mm
Zoom Scan	5x5x7, dx=8mm, dy=8mm, dz=5mm, Complete/ndx=8mm, dy=8mm, h= 5.00 mm
Phantom	Validation plane
Device Position	Back Side
Band	LTE Band 2(RB 1)
Channels	Mid
Signal	LTE (Crest factor: 1.0)
Frequency (MHz)	1880
Relative permittivity (real part)	40.05
Conductivity (S/m)	1.37

Maximum location: X=-15.00, Y=-14.00

SAR Peak: 1.63 W/kg

SAR 10g (W/Kg)	0.549169
SAR 1g (W/Kg)	1.000561



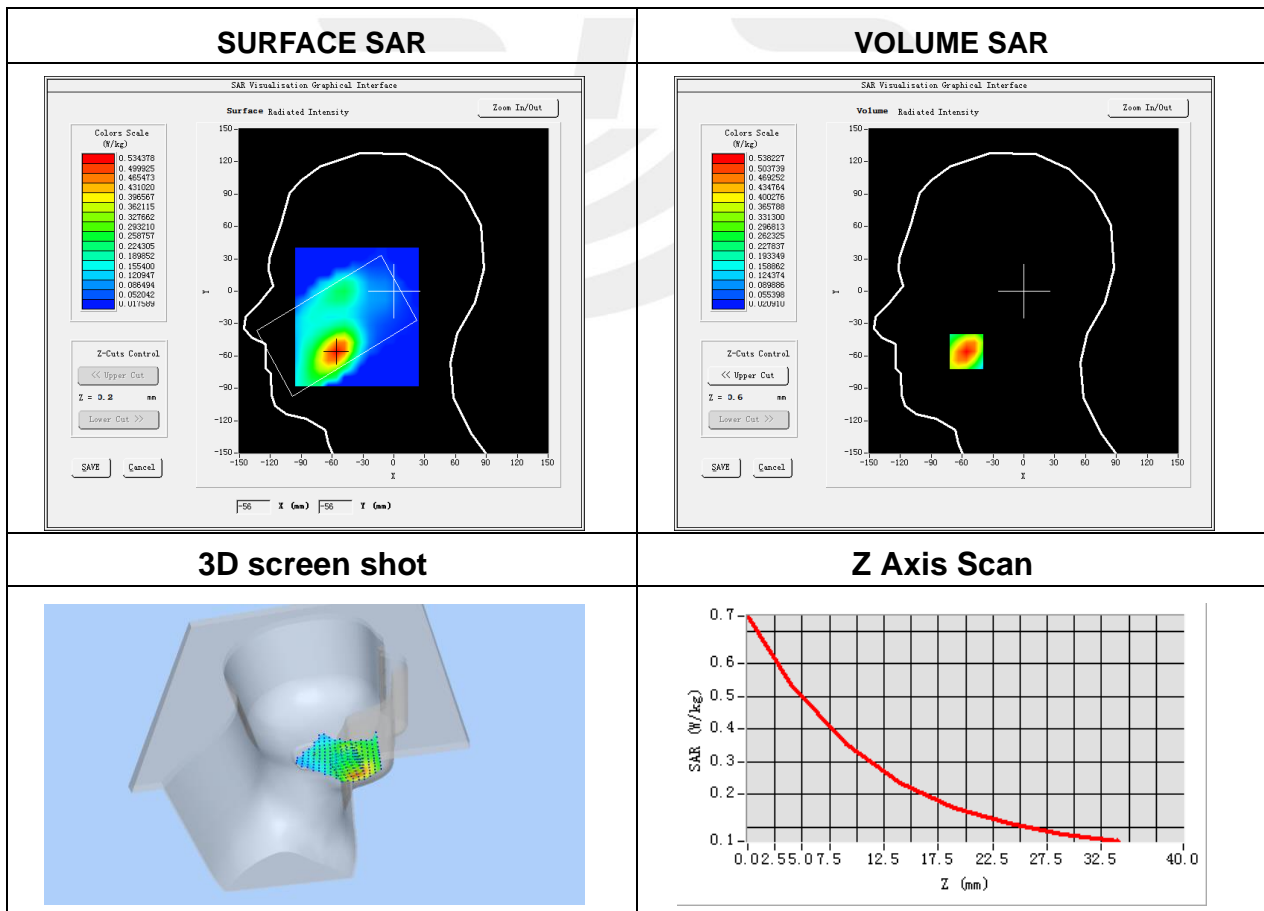
Plot 13: DUT: Smart Phone; EUT Model: HPP-L55B

Test Date	2021-03-25
Probe	SN 07/21 EPGO352
Area Scan	dx=8mm, dy=8mm, h= 5.00 mm
Zoom Scan	5x5x7, dx=8mm, dy=8mm, dz=5mm, Complete/ndx=8mm, dy=8mm, h= 5.00 mm
Phantom	Left head
Device Position	Cheek
Band	LTE Band 4 (RB 1)
Channels	Mid
Signal	LTE (Crest factor: 1.0)
Frequency (MHz)	1732.5
Relative permittivity (real part)	39.86
Conductivity (S/m)	1.33

Maximum location: X=-56.00, Y=-56.00

SAR Peak: 0.76 W/kg

SAR 10g (W/Kg)	0.306180
SAR 1g (W/Kg)	0.507714



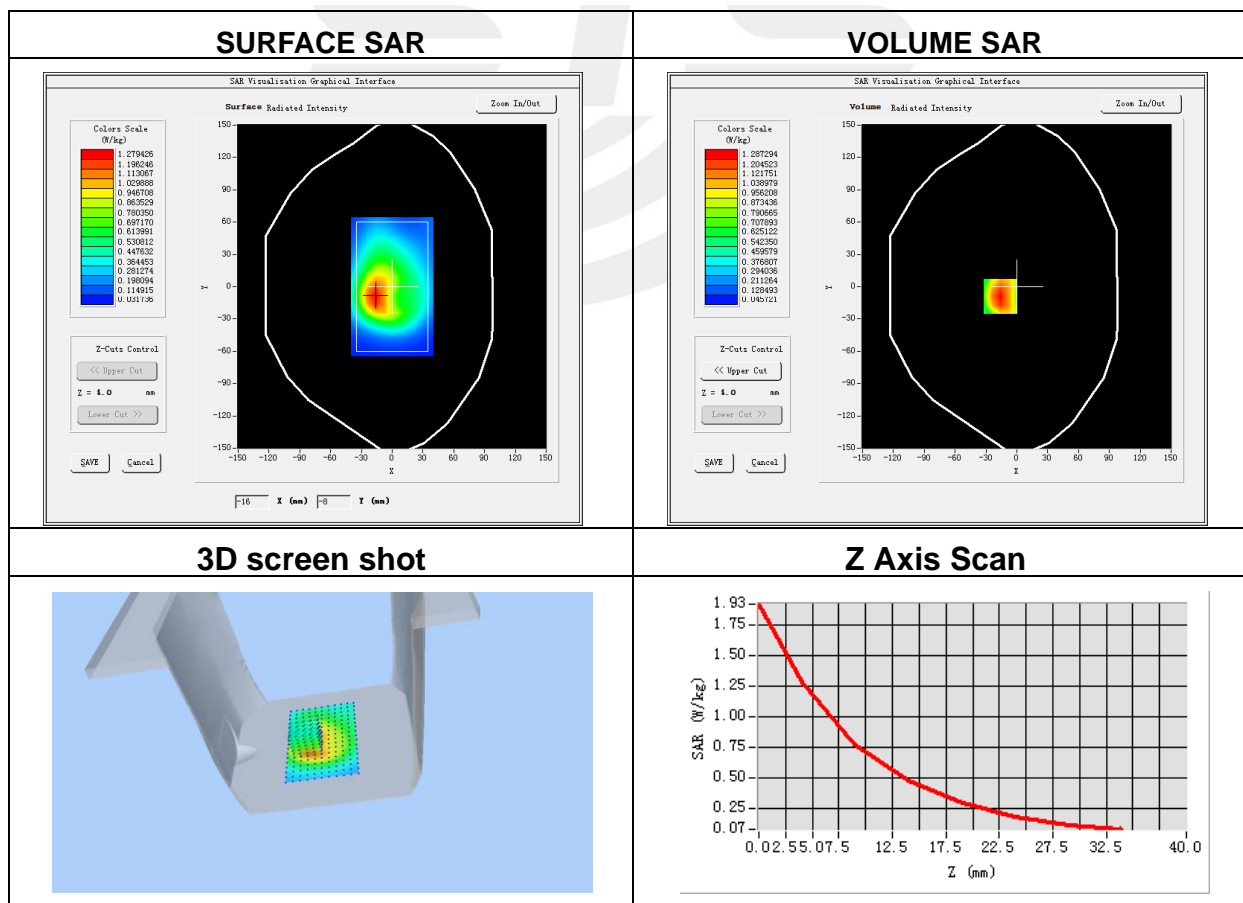
Plot 14: DUT: Smart Phone; EUT Model: HPP-L55B

Test Date	2021-03-25
Probe	SN 07/21 EPGO352
Area Scan	dx=8mm, dy=8mm, h= 5.00 mm
Zoom Scan	5x5x7, dx=8mm, dy=8mm, dz=5mm, Complete/ndx=8mm, dy=8mm, h= 5.00 mm
Phantom	Validation plane
Device Position	Front Side
Band	LTE Band 4 (RB 1)
Channels	Mid
Signal	LTE (Crest factor: 1.0)
Frequency (MHz)	1732.5
Relative permittivity (real part)	39.86
Conductivity (S/m)	1.33

Maximum location: X=-16.00, Y=-9.00

SAR Peak: 1.94 W/kg

SAR 10g (W/Kg)	0.709197
SAR 1g (W/Kg)	1.253231



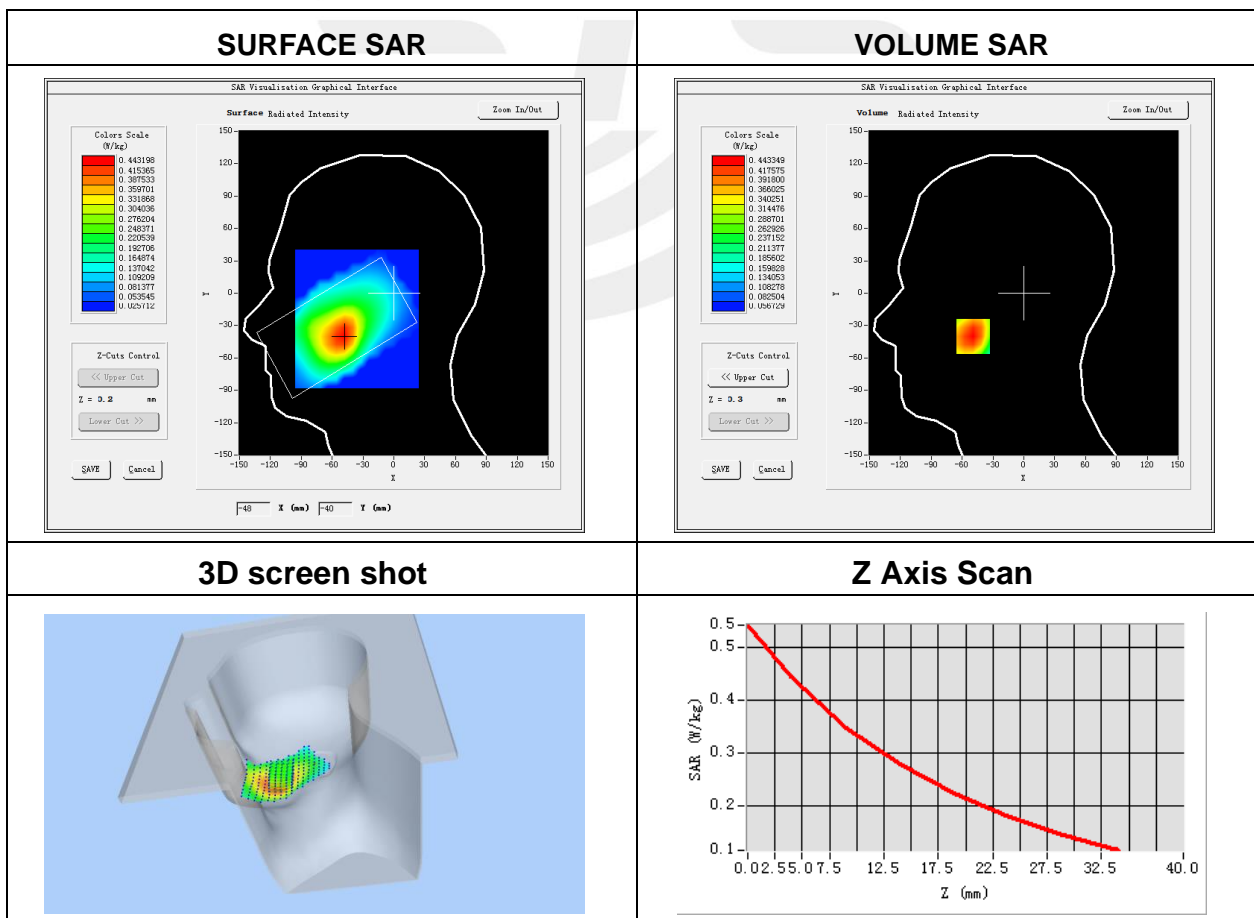
Plot 15: DUT: Smart Phone; EUT Model: HPP-L55B

Test Date	2021-03-24
Probe	SN 07/21 EPGO352
Area Scan	dx=8mm, dy=8mm, h= 5.00 mm
Zoom Scan	5x5x7, dx=8mm, dy=8mm, dz=5mm, Complete/ndx=8mm, dy=8mm, h= 5.00 mm
Phantom	Right head
Device Position	Cheek
Band	LTE Band 5 (RB 1)
Channels	Middle
Signal	LTE (Crest factor: 1.0)
Frequency (MHz)	836.5
Relative permittivity (real part)	41.99
Conductivity (S/m)	0.88

Maximum location: X=-49.00, Y=-40.00

SAR Peak: 0.55 W/kg

SAR 10g (W/Kg)	0.319988
SAR 1g (W/Kg)	0.432089



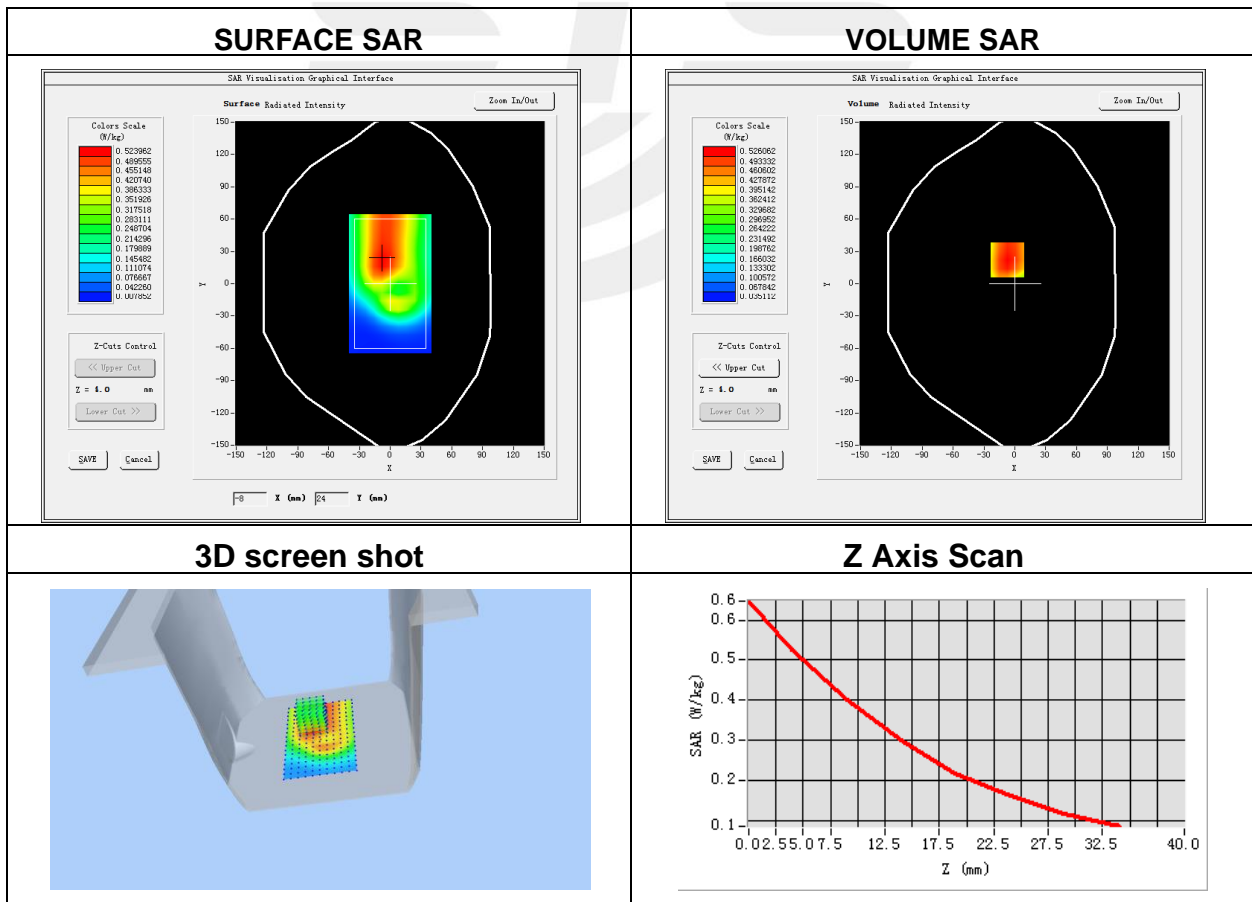
Plot 16: DUT: Smart Phone; EUT Model: HPP-L55B

Test Date	2021-03-24
Probe	SN 07/21 EPGO352
Area Scan	dx=8mm, dy=8mm, h= 5.00 mm
Zoom Scan	5x5x7, dx=8mm, dy=8mm, dz=5mm, Complete/ndx=8mm, dy=8mm, h= 5.00 mm
Phantom	Validation plane
Device Position	Back Side
Band	LTE Band 5 (RB 1)
Channels	Middle
Signal	LTE (Crest factor: 1.0)
Frequency (MHz)	836.5
Relative permittivity (real part)	41.99
Conductivity (S/m)	0.88

Maximum location: X=-7.00, Y=22.00

SAR Peak: 0.66 W/kg

SAR 10g (W/Kg)	0.368414
SAR 1g (W/Kg)	0.512308



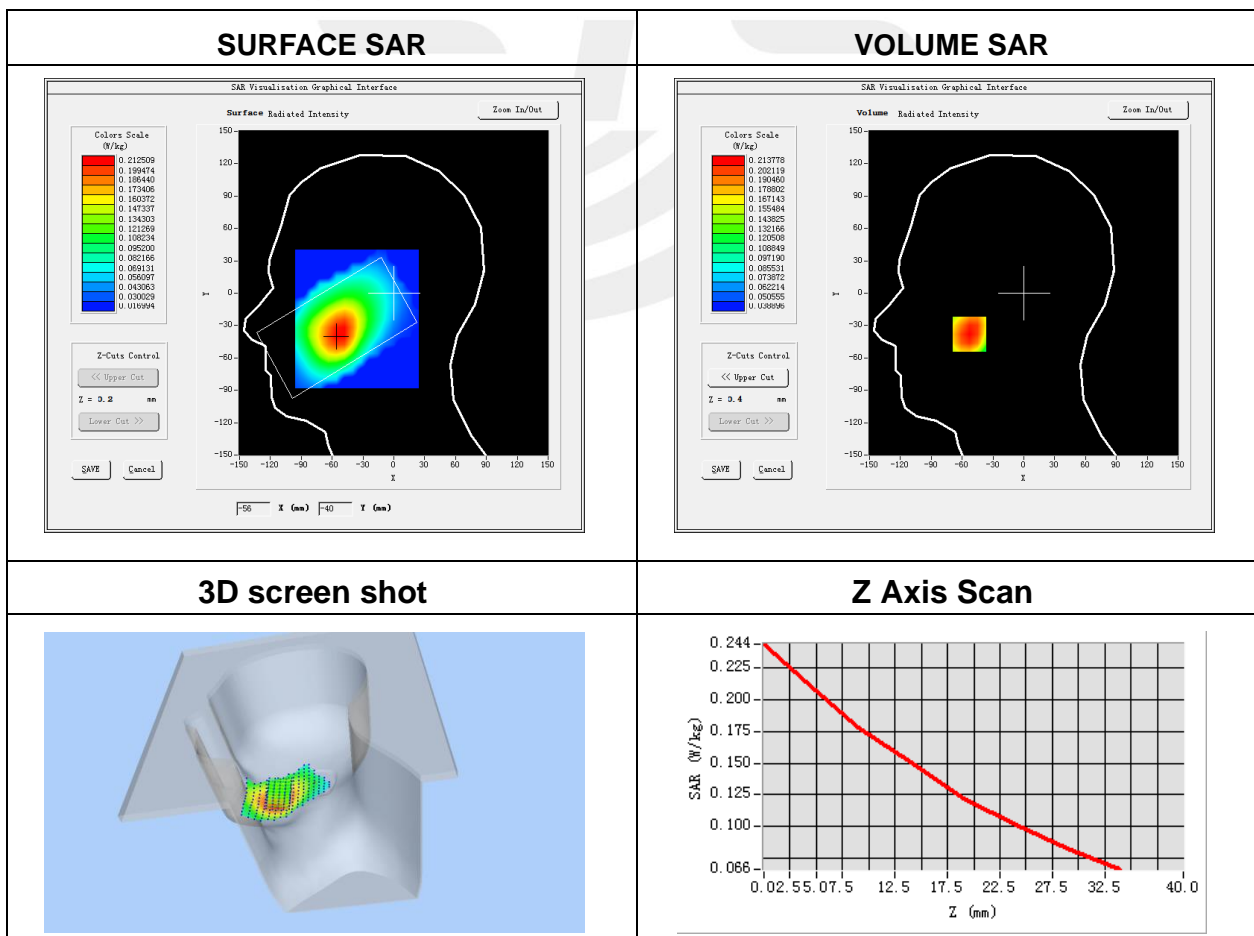
Plot 17: DUT: Smart Phone; EUT Model: HPP-L55B

Test Date	2021-03-24
Probe	SN 07/21 EPGO352
Area Scan	dx=8mm, dy=8mm, h= 5.00 mm
Zoom Scan	5x5x7, dx=8mm, dy=8mm, dz=5mm, Complete/ndx=8mm, dy=8mm, h= 5.00 mm
Phantom	Right head
Device Position	Cheek
Band	LTE Band 12 (RB 1)
Channels	Mid
Signal	LTE (Crest factor: 1.0)
Frequency (MHz)	707.5
Relative permittivity (real part)	38.00
Conductivity (S/m)	2.01

Maximum location: X=-53.00, Y=-38.00

SAR Peak: 0.25 W/kg

SAR 10g (W/Kg)	0.164532
SAR 1g (W/Kg)	0.211263



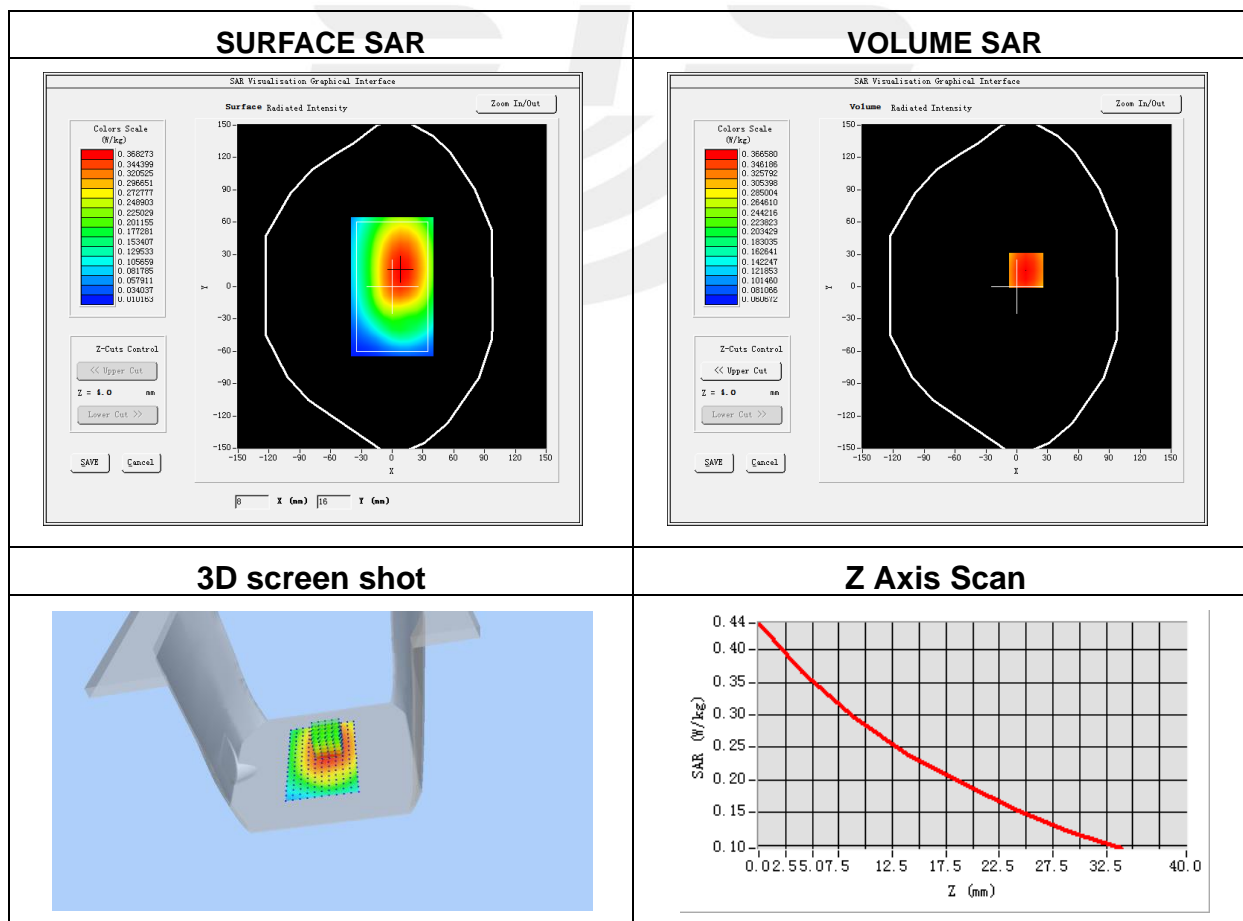
Plot 18: DUT: Smart Phone; EUT Model: HPP-L55B

Test Date	2021-03-24
Probe	SN 07/21 EPGO352
Area Scan	dx=8mm, dy=8mm, h= 5.00 mm
Zoom Scan	5x5x7, dx=8mm, dy=8mm, dz=5mm, Complete/ndx=8mm, dy=8mm, h= 5.00 mm
Phantom	Validation plane
Device Position	Back Side
Band	LTE Band 12 (RB 1)
Channels	Mid
Signal	LTE (Crest factor: 1.0)
Frequency (MHz)	707.5
Relative permittivity (real part)	38.00
Conductivity (S/m)	2.01

Maximum location: X=9.00, Y=15.00

SAR Peak: 0.44 W/kg

SAR 10g (W/Kg)	0.281608
SAR 1g (W/Kg)	0.365909



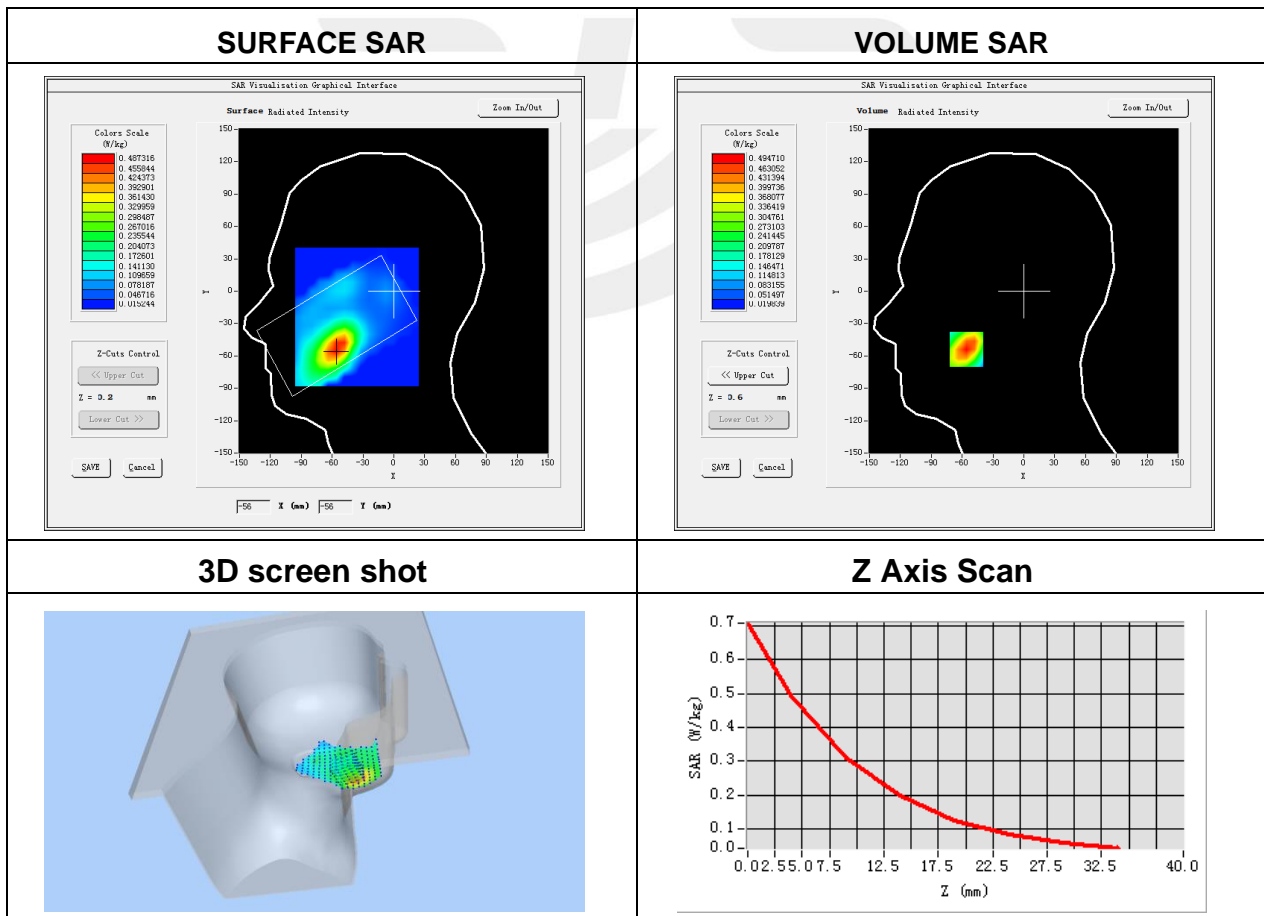
Plot 19: DUT: Smart Phone; EUT Model: HPP-L55B

Test Date	2021-03-25
Probe	SN 07/21 EPGO352
Area Scan	dx=8mm, dy=8mm, h= 5.00 mm
Zoom Scan	5x5x7, dx=8mm, dy=8mm, dz=5mm, Complete/ndx=8mm, dy=8mm, h= 5.00 mm
Phantom	Left head
Device Position	Cheek
Band	LTE Band 25 (RB 1)
Channels	Mid
Signal	LTE (Crest factor: 1.0)
Frequency (MHz)	1882.5
Relative permittivity (real part)	41.99
Conductivity (S/m)	0.88

Maximum location: X=-56.00, Y=-54.00

SAR Peak: 0.73 W/kg

SAR 10g (W/Kg)	0.266609
SAR 1g (W/Kg)	0.466712



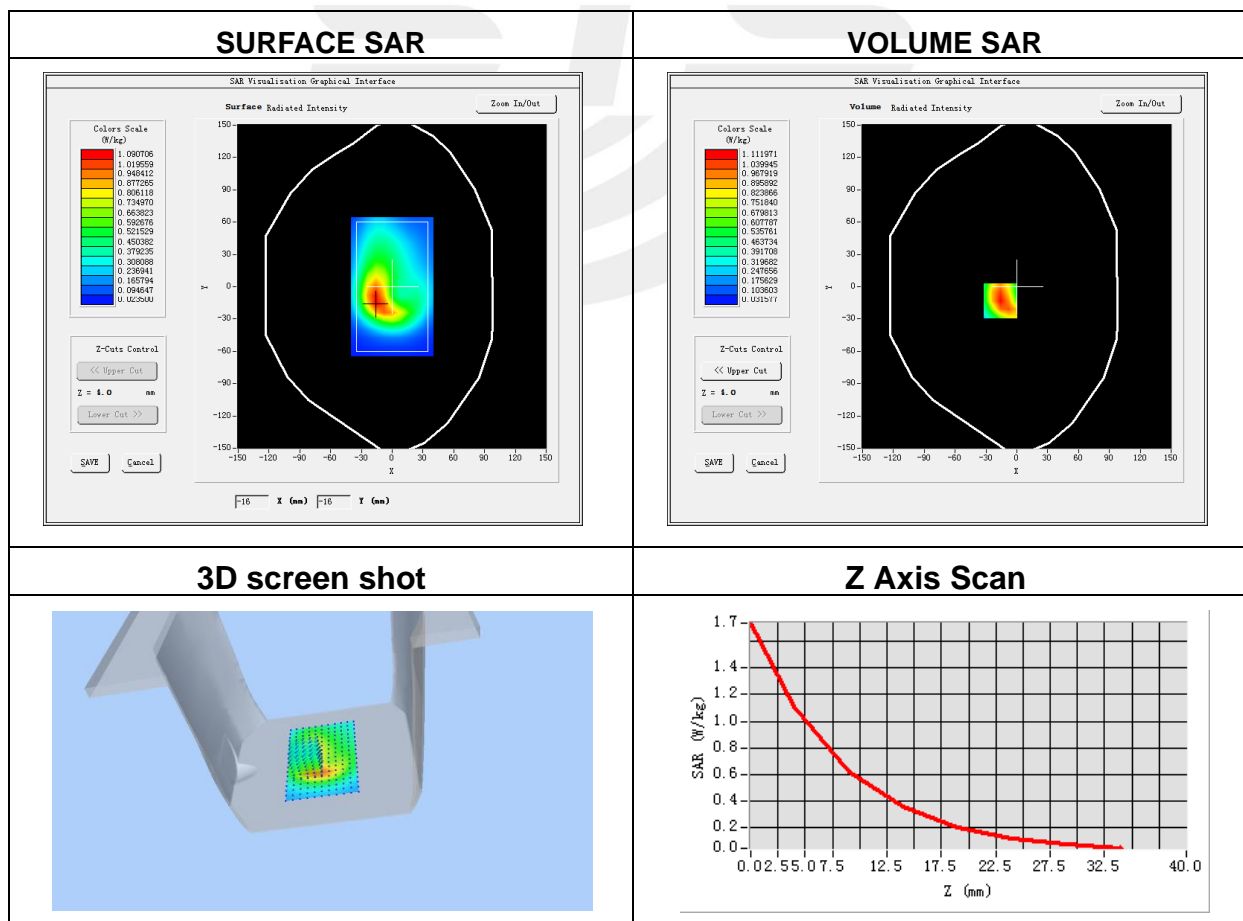
Plot 20: DUT: Smart Phone; EUT Model: HPP-L55B

Test Date	2021-03-25
Probe	SN 07/21 EPGO352
Area Scan	dx=8mm, dy=8mm, h= 5.00 mm
Zoom Scan	5x5x7, dx=8mm, dy=8mm, dz=5mm, Complete/ndx=8mm, dy=8mm, h= 5.00 mm
Phantom	Validation plane
Device Position	Front Side
Band	LTE Band 25 (RB 1)
Channels	Mid
Signal	LTE (Crest factor: 1.0)
Frequency (MHz)	1882.5
Relative permittivity (real part)	41.99
Conductivity (S/m)	0.88

Maximum location: X=-16.00, Y=-13.00

SAR Peak: 1.73 W/kg

SAR 10g (W/Kg)	0.575938
SAR 1g (W/Kg)	1.054939



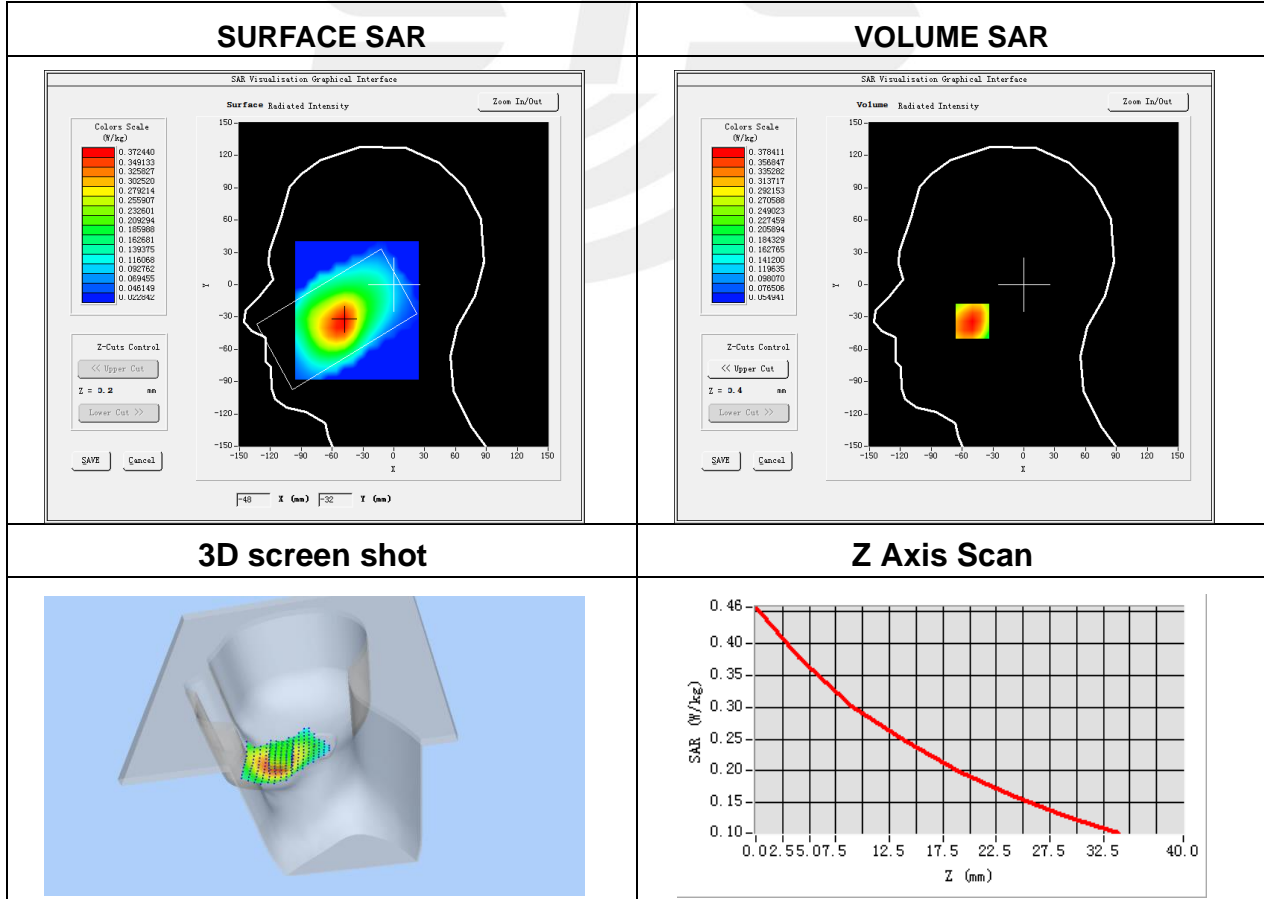
Plot 21: DUT: Smart Phone; EUT Model: HPP-L55B

Test Date	2021-03-24
Probe	SN 07/21 EPGO352
Area Scan	dx=8mm, dy=8mm, h= 5.00 mm
Zoom Scan	5x5x7, dx=8mm, dy=8mm, dz=5mm, Complete/ndx=8mm, dy=8mm, h= 5.00 mm
Phantom	Right head
Device Position	Cheek
Band	LTE Band 26 (RB 1)
Channels	Mid
Signal	LTE (Crest factor: 1.0)
Frequency (MHz)	831.5
Relative permittivity (real part)	41.99
Conductivity (S/m)	0.88

Maximum location: X=-50.00, Y=-34.00

SAR Peak: 0.46 W/kg

SAR 10g (W/Kg)	0.274899
SAR 1g (W/Kg)	0.367185

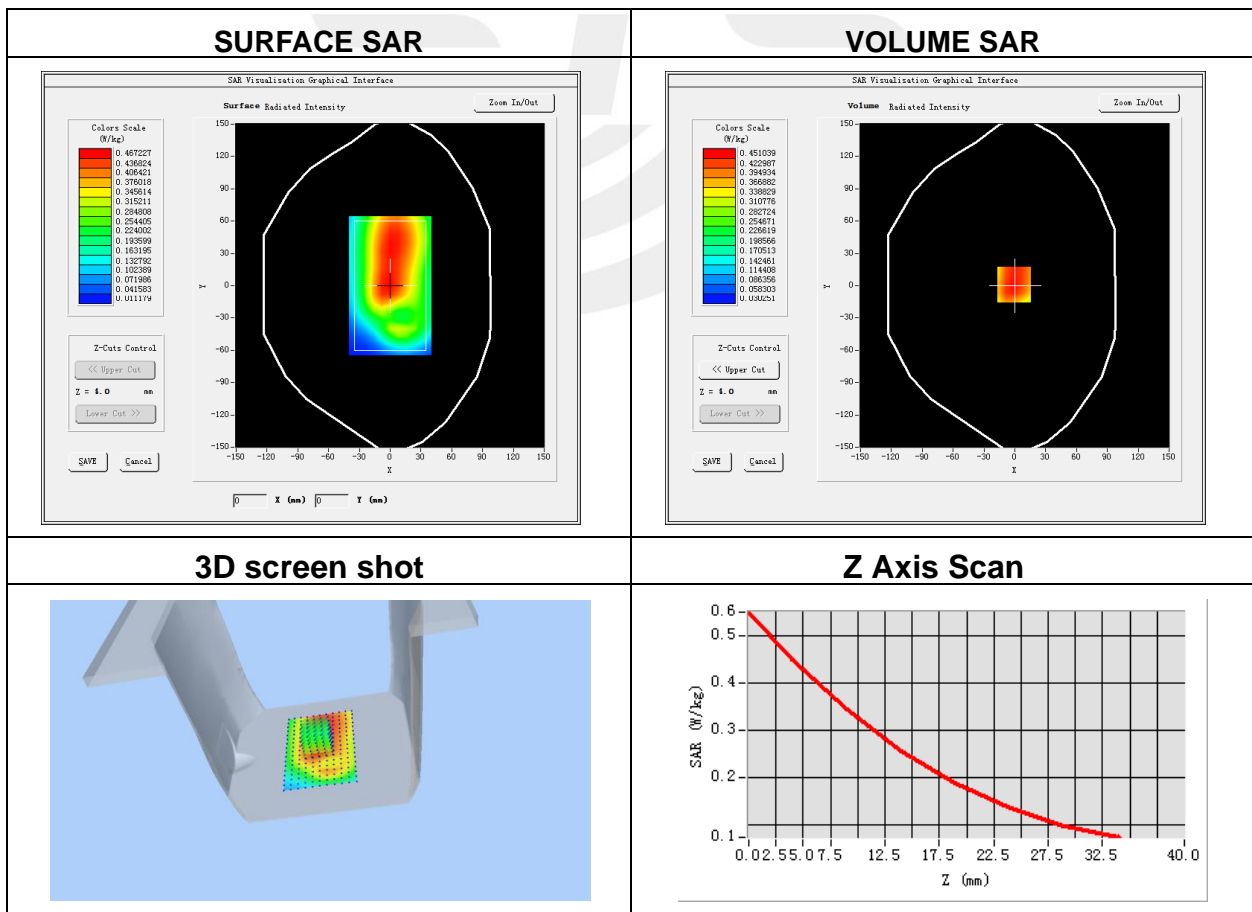


Plot 22: DUT: Smart Phone; EUT Model: HPP-L55B

Test Date	2021-03-24
Probe	SN 07/21 EPGO352
Area Scan	dx=8mm, dy=8mm, h= 5.00 mm
Zoom Scan	5x5x7, dx=8mm, dy=8mm, dz=5mm, Complete/ndx=8mm, dy=8mm, h= 5.00 mm
Phantom	Validation plane
Device Position	Back Side
Band	LTE Band 26 (RB 1)
Channels	Mid
Signal	LTE (Crest factor: 1.0)
Frequency (MHz)	831.5
Relative permittivity (real part)	41.99
Conductivity (S/m)	0.88

Maximum location: X=-1.00, Y=1.00
SAR Peak: 0.56 W/kg

SAR 10g (W/Kg)	0.314235
SAR 1g (W/Kg)	0.434853



Plot 23: DUT: Smart Phone; EUT Model: HPP-L55B

Test Date	2021-03-29
Probe	SN 07/21 EPGO352
Area Scan	dx=8mm, dy=8mm, h= 5.00 mm
Zoom Scan	5x5x7, dx=8mm, dy=8mm, dz=5mm, Complete/ndx=8mm, dy=8mm, h= 5.00 mm
Phantom	Left head
Device Position	Cheek
Band	LTE Band 41 (RB 1)
Channels	Mid
Signal	LTE (Crest factor: 1.0)
Frequency (MHz)	2593
Relative permittivity (real part)	41.99
Conductivity (S/m)	0.88

Maximum location: X=-48.00, Y=-55.00

SAR Peak: 0.73 W/kg

SAR 10g (W/Kg)	0.210790
SAR 1g (W/Kg)	0.419007

