



REPORT No.: XM19020007W01

Annex C Plots of System Performance Check

System Check_750MHz_Head_190401

DUT: Dipole 750 MHz

Communication System: UID 0, CW (0); Frequency: 750 MHz; Duty Cycle: 1:1

Medium: HSL_750 Medium parameters used: $f = 750$ MHz; $\sigma = 0.885$ S/m; $\epsilon_r = 40.799$; $\rho = 1000$ kg/m³

Ambient Temperature: 23.3 °C; Liquid Temperature: 22.5 °C

DASY5 Configuration:

- Probe: EX3DV4 - SN7445; ConvF(10.03, 10.03, 10.03); Calibrated: 2018.09.04;
- Sensor-Surface: 4mm (Mechanical Surface Detection)
- Electronics: DAE4 Sn1516; Calibrated: 2018.07.14
- Phantom: SAM 1; Type: QD000P40CC; Serial: TP:1471
- Measurement SW: DASY52, Version 52.8 (8); SEMCAD X Version 14.6.10 (7331)

CW750/Area Scan (81x81x1): Interpolated grid: dx=1.500 mm, dy=1.500 mm

Maximum value of SAR (interpolated) = 2.24 W/kg

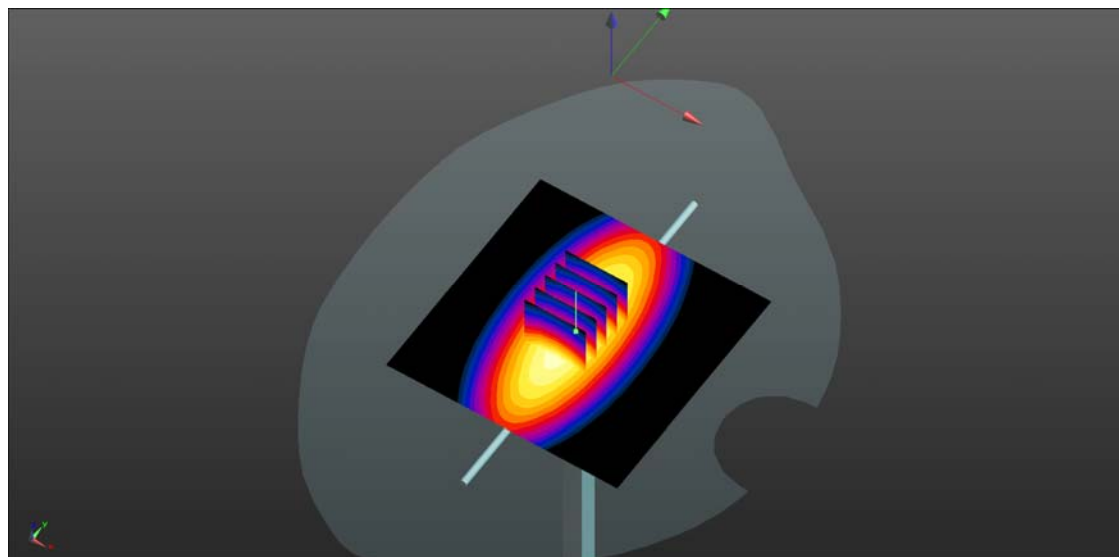
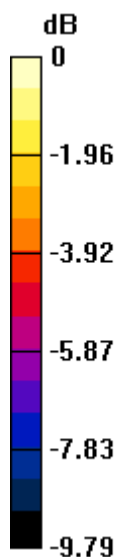
CW750/Zoom Scan (5x5x7)/Cube 0: Measurement grid: dx=8mm, dy=8mm, dz=5mm

Reference Value = 50.75 V/m; Power Drift = -0.02 dB

Peak SAR (extrapolated) = 3.03 W/kg

SAR(1 g) = 2.07 W/kg; SAR(10 g) = 1.39 W/kg

Maximum value of SAR (measured) = 2.23 W/kg



0 dB = 2.24 W/kg

System Check_835MHz_Head_190311

Communication System: UID 0, CW (0); Frequency: 835 MHz; Duty Cycle: 1:1

Medium: HSL_835_190311 Medium parameters used: $f = 835$ MHz; $\sigma = 0.91$ S/m; $\epsilon_r = 41.75$ $\rho = 1000$ kg/m³

Ambient Temperature : 23.1 °C; Liquid Temperature : 22.3 °C

DASY5 Configuration:

- Probe: EX3DV4 - SN7445; ConvF(9.66, 9.66, 9.66); Calibrated: 2018.09.04;
- Sensor-Surface: 4mm (Mechanical Surface Detection)
- Electronics: DAE4 Sn1516; Calibrated: 2018.07.14
- Phantom: SAM 1; Type: QD000P40CC; Serial: TP:1471
- Measurement SW: DASY52, Version 52.8 (8); SEMCAD X Version 14.6.10 (7331)

CW835/Area Scan (81x81x1): Interpolated grid: dx=1.500 mm, dy=1.500 mm

Maximum value of SAR (interpolated) = 2.70 W/kg

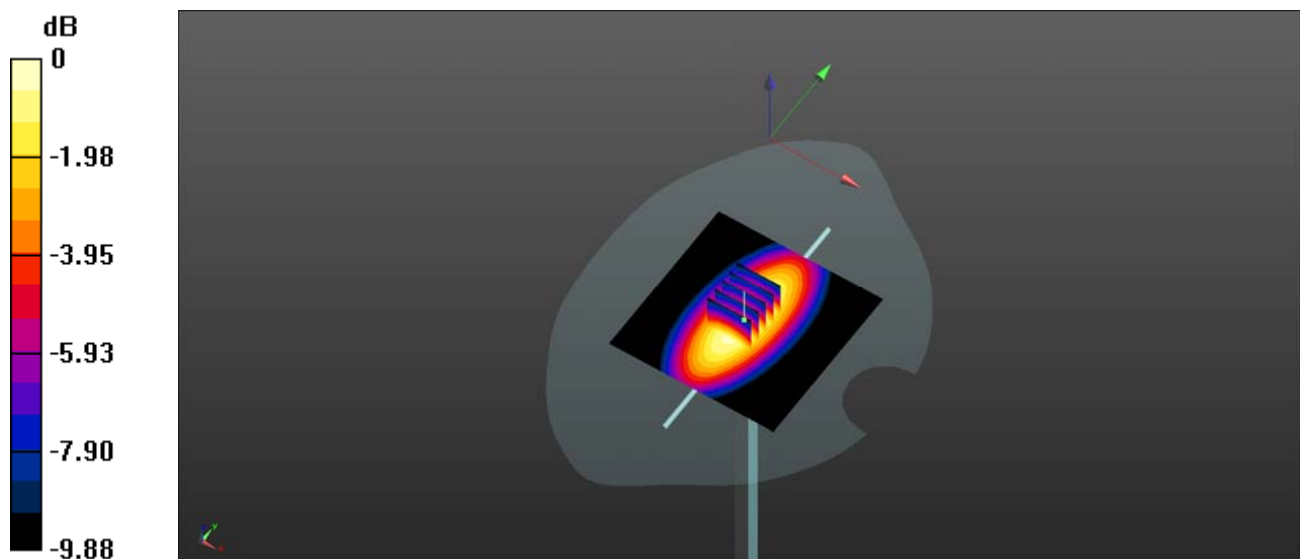
CW835/Zoom Scan (5x5x7)/Cube 0: Measurement grid: dx=8mm, dy=8mm, dz=5mm

Reference Value = 55.53 V/m; Power Drift = -0.07 dB

Peak SAR (extrapolated) = 3.62 W/kg

SAR(1 g) = 2.43W/kg; SAR(10 g) = 1.56W/kg

Maximum value of SAR (measured) = 2.69 W/kg



0 dB = 2.70 W/kg

System Check_1750MHz_Head_190329

Communication System: UID 0, CW (0); Frequency: 1750 MHz; Duty Cycle: 1:1

Medium: HSL_1750_190329 Medium parameters used: $f = 1750$ MHz; $\sigma = 1.42$ S/m; $\epsilon_r = 41.266$; $\rho = 1000$ kg/m³

Ambient Temperature : 23.3 °C; Liquid Temperature : 22.1 °C

DASY5 Configuration:

- Probe: EX3DV4 - SN7445; ConvF(8.29, 8.29, 8.29); Calibrated: 2018.09.04;
- Sensor-Surface: 4mm (Mechanical Surface Detection)
- Electronics: DAE4 Sn1516; Calibrated: 2018.07.14
- Phantom: SAM 2; Type: QD000P40CC; Serial: TP:1464
- Measurement SW: DASY52, Version 52.8 (8); SEMCAD X Version 14.6.10 (7331)

CW1750/Area Scan (81x81x1): Interpolated grid: dx=1.500 mm, dy=1.500 mm

Maximum value of SAR (interpolated) = 10.6 W/kg

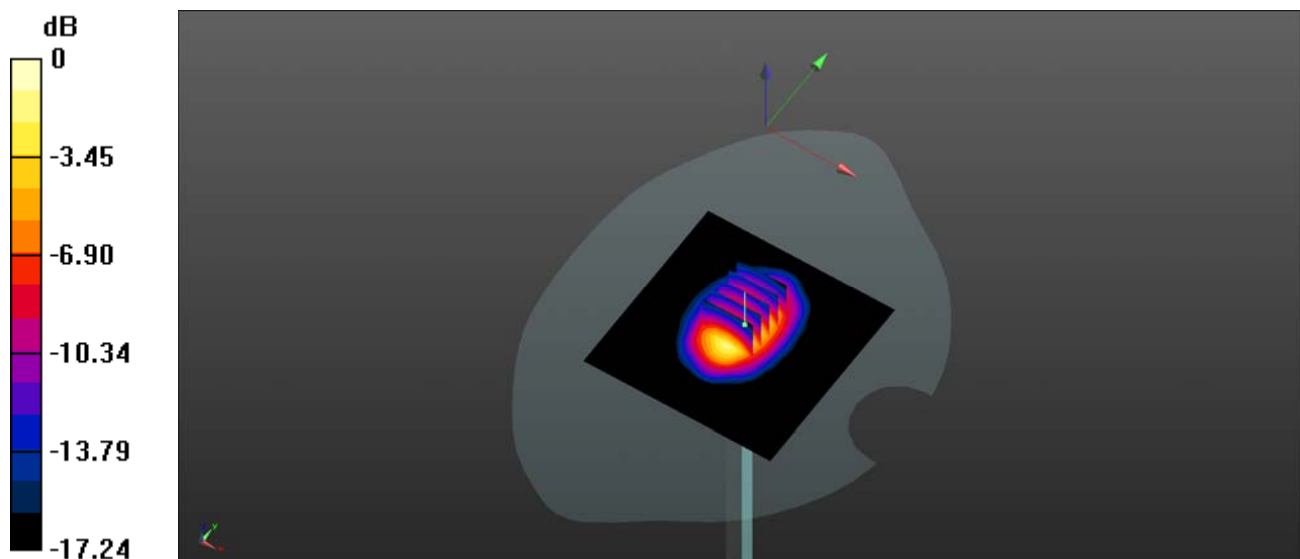
CW1750/Zoom Scan (5x5x7)/Cube 0: Measurement grid: dx=8mm, dy=8mm, dz=5mm

Reference Value = 86.15 V/m; Power Drift = 0.02 dB

Peak SAR (extrapolated) = 17.1 W/kg

SAR(1 g) = 9.28 W/kg; SAR(10 g) = 4.88 W/kg

Maximum value of SAR (measured) = 10.3 W/kg



0 dB = 10.6 W/kg

System Check_1900MHz_Head_190312

Communication System: UID 0, CW (0); Frequency: 1900 MHz; Duty Cycle: 1:1

Medium: HSL_1900_181112 Medium parameters used: $f = 1900$ MHz; $\sigma = 1.43$ S/m; $\epsilon_r = 40.882$; $\rho = 1000$ kg/m³

Ambient Temperature : 23.2 °C; Liquid Temperature : 22.6 °C

DASY5 Configuration:

- Probe: EX3DV4 - SN7445; ConvF(7.89, 7.89, 7.89); Calibrated: 2018.09.04;
- Sensor-Surface: 4mm (Mechanical Surface Detection)
- Electronics: DAE4 Sn1516; Calibrated: 2018.07.14
- Phantom: SAM 2; Type: QD000P40CC; Serial: TP:1464
- Measurement SW: DASY52, Version 52.8 (8); SEMCAD X Version 14.6.10 (7331)

CW 1900/Area Scan (81x81x1): Interpolated grid: dx=1.500 mm, dy=1.500 mm
Maximum value of SAR (interpolated) = 12.3 W/kg

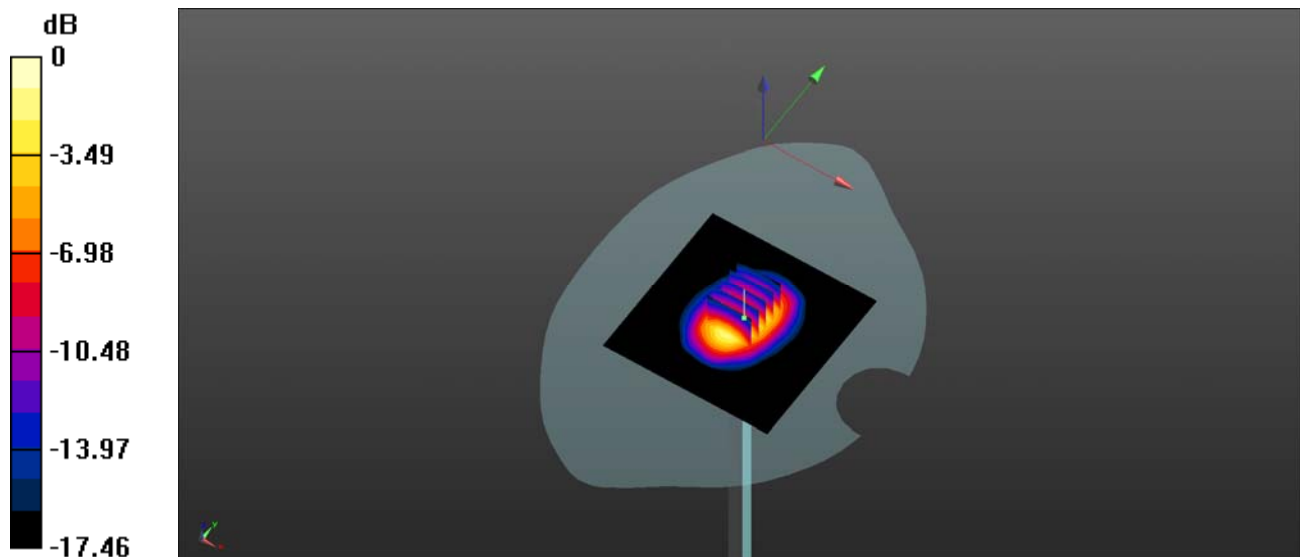
CW 1900/Zoom Scan (5x5x7)/Cube 0: Measurement grid: dx=8mm, dy=8mm, dz=5mm

Reference Value = 92.78 V/m; Power Drift = 0.01 dB

Peak SAR (extrapolated) = 20.1 W/kg

SAR(1 g) = 10.23 W/kg; SAR(10 g) = 5.26 W/kg

Maximum value of SAR (measured) = 12.2 W/kg



0 dB = 12.3 W/kg

System Check_2450MHz_Head_190312

Communication System: UID 0, CW (0); Frequency: 2450 MHz; Duty Cycle: 1:1

Medium: HSL_2450_190312 Medium parameters used: $f = 2450$ MHz; $\sigma = 1.82$ S/m; $\epsilon_r = 40.021$; $\rho = 1000$ kg/m³

Ambient Temperature : 23.1 °C; Liquid Temperature : 22.8 °C

DASY5 Configuration:

- Probe: EX3DV4 - SN7445; ConvF(7.4, 7.4, 7.4); Calibrated: 2018.09.04;
- Sensor-Surface: 4mm (Mechanical Surface Detection)
- Electronics: DAE4 Sn1516; Calibrated: 2018.07.14
- Phantom: SAM 2; Type: QD000P40CC; Serial: TP:1464
- Measurement SW: DASY52, Version 52.8 (8); SEMCAD X Version 14.6.10 (7331)

CW2450/Area Scan (71x81x1): Interpolated grid: dx=1.500 mm, dy=1.500 mm

Maximum value of SAR (interpolated) = 15.7 W/kg

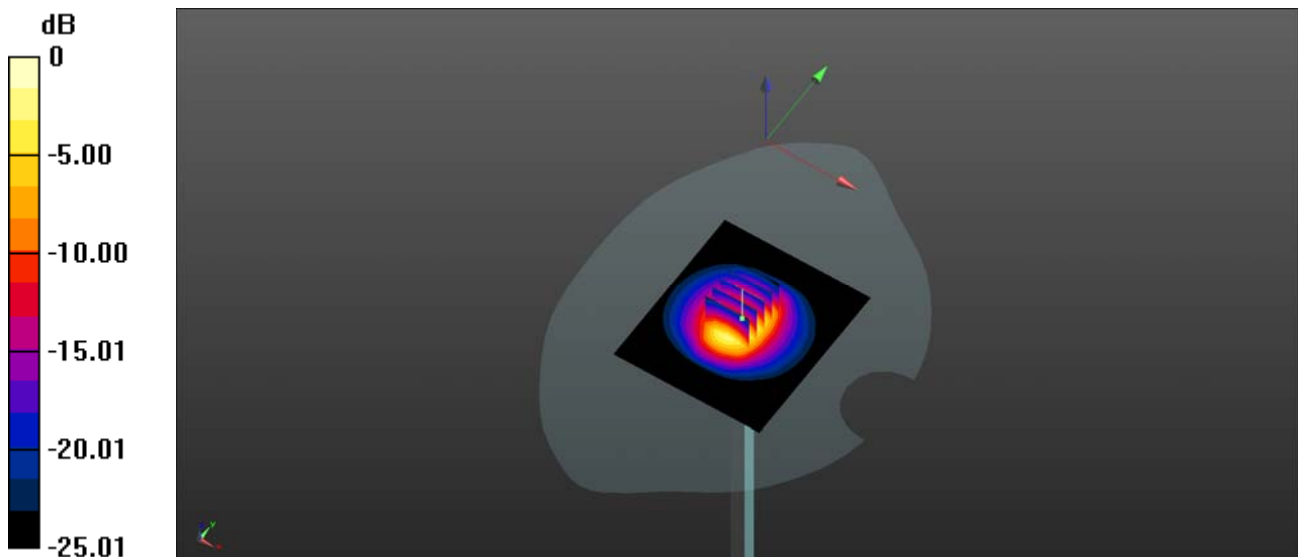
CW2450/Zoom Scan (5x5x7)/Cube 0: Measurement grid: dx=8mm, dy=8mm, dz=5mm

Reference Value = 89.51 V/m; Power Drift = -0.02 dB

Peak SAR (extrapolated) = 30.1 W/kg

SAR(1 g) = 13.21 W/kg; SAR(10 g) = 6.15 W/kg

Maximum value of SAR (measured) = 14.7 W/kg



0 dB = 15.7 W/kg

System Check_2600MHz_Head_190313

Communication System: UID 0, CW (0); Frequency: 2600 MHz; Duty Cycle: 1:1

Medium: HSL_2600_190313 Medium parameters used: $f = 2600$ MHz; $\sigma = 2.046$ S/m; $\epsilon_r = 37.758$; $\rho = 1000$ kg/m³

Ambient Temperature : 23.6 °C; Liquid Temperature : 22.3 °C

DASY5 Configuration:

- Probe: EX3DV4 - SN7445; ConvF(7.11, 7.11, 7.11); Calibrated: 2018.09.04;
- Sensor-Surface: 4mm (Mechanical Surface Detection)
- Electronics: DAE4 Sn1516; Calibrated: 2018.07.14
- Phantom: SAM 1; Type: QD000P40CC; Serial: TP:1471
- Measurement SW: DASY52, Version 52.8 (8); SEMCAD X Version 14.6.10 (7331)

CW2600/Area Scan (71x81x1): Interpolated grid: dx=1.500 mm, dy=1.500 mm

Maximum value of SAR (interpolated) = 16.2 W/kg

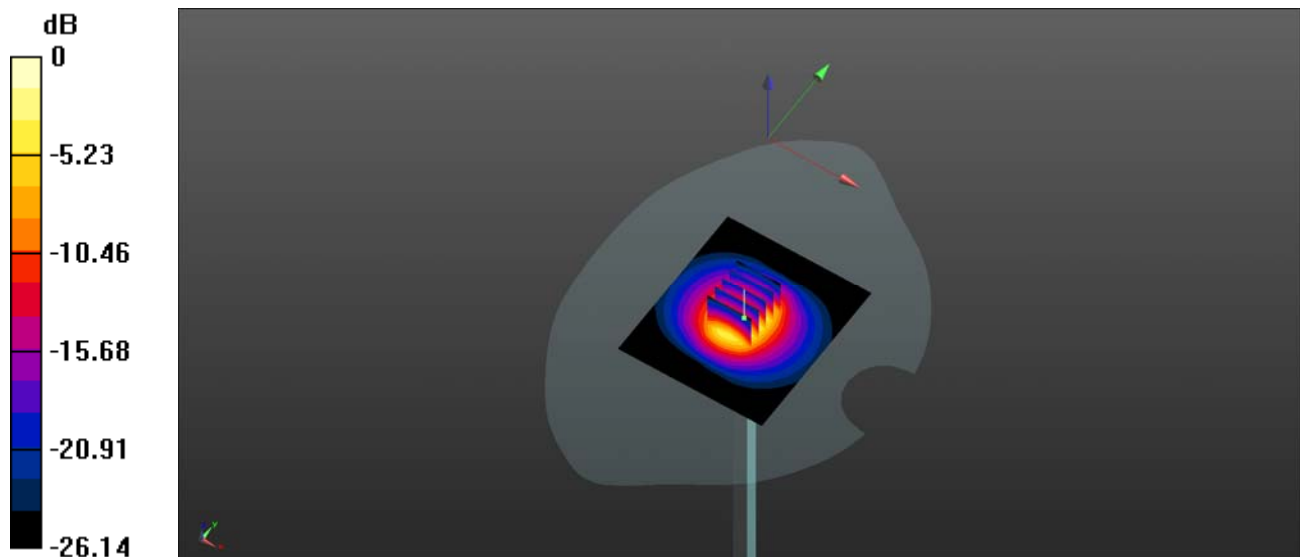
CW2600/Zoom Scan (5x5x7)/Cube 0: Measurement grid: dx=8mm, dy=8mm, dz=5mm

Reference Value = 87.88 V/m; Power Drift = 0.01 dB

Peak SAR (extrapolated) = 32.5 W/kg

SAR(1 g) = 13.63 W/kg; SAR(10 g) = 6.02 W/kg

Maximum value of SAR (measured) = 15.4 W/kg



0 dB = 16.2 W/kg

System Check_5250MHz_Head_190312

Communication System: UID 0, CW (0); Frequency: 5250 MHz; Duty Cycle: 1:1

Medium: HSL_5250 Medium parameters used: $f = 5250$ MHz; $\sigma = 4.484$ S/m; $\epsilon_r = 35.031$; $\rho = 1000$ kg/m³

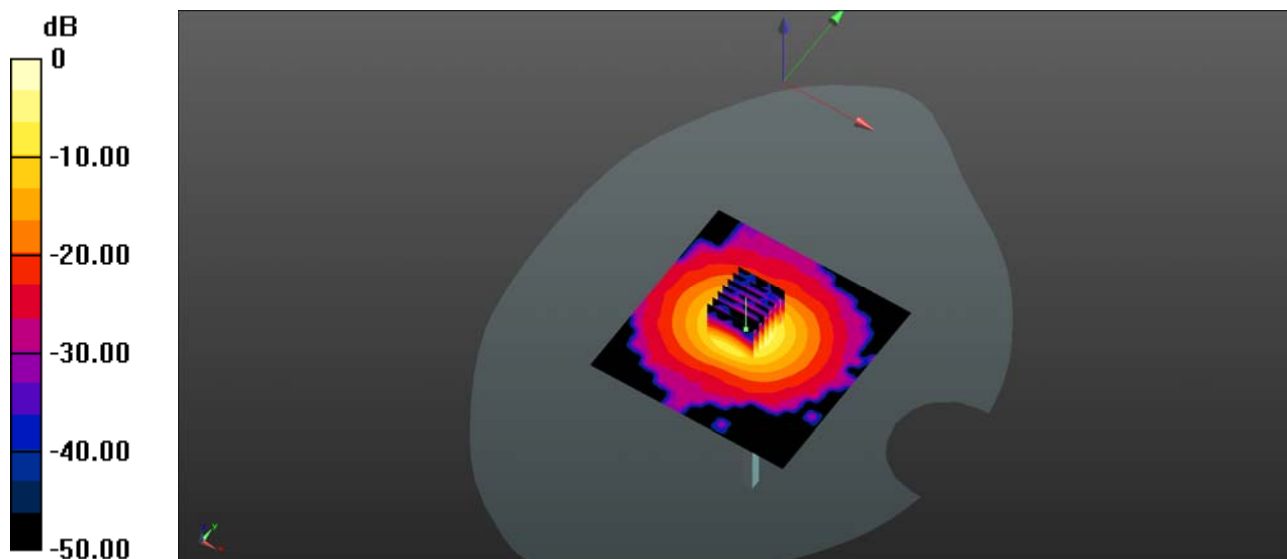
Ambient Temperature : 23.2 °C; Liquid Temperature : 22.6 °C

DASY5 Configuration:

- Probe: EX3DV4 - SN7445; ConvF(4.98, 4.98, 4.98); Calibrated: 2018.09.04;
- Sensor-Surface: 2mm (Mechanical Surface Detection)
- Electronics: DAE4 Sn1516; Calibrated: 2018.07.14
- Phantom: SAM V8.0 ; Type: QD 000 P41 AA; Serial: 1922
- Measurement SW: DASY52, Version 52.8 (8); SEMCAD X Version 14.6.10 (7331)

CW 5200/Area Scan (201x201x1): Interpolated grid: dx=0.5000 mm, dy=0.5000 mm
Maximum value of SAR (interpolated) = 8.05 W/kg

CW 5200/Zoom Scan (7x7x7)/Cube 0: Measurement grid: dx=4mm, dy=4mm, dz=4mm
Reference Value = 34.98 V/m; Power Drift = 0.04 dB
Peak SAR (extrapolated) = 43.1 W/kg
SAR(1 g) = 7.81 W/kg; SAR(10 g) = 2.24 W/kg
Maximum value of SAR (measured) = 7.68 W/kg



0 dB = 7.68 W/kg

System Check_5600MHz_Head_190312

Communication System: UID 0, CW (0); Frequency: 5600 MHz; Duty Cycle: 1:1

Medium: HSL_5600 Medium parameters used: $f = 5600$ MHz; $\sigma = 5.019$ S/m; $\epsilon_r = 34.456$; $\rho = 1000$ kg/m³

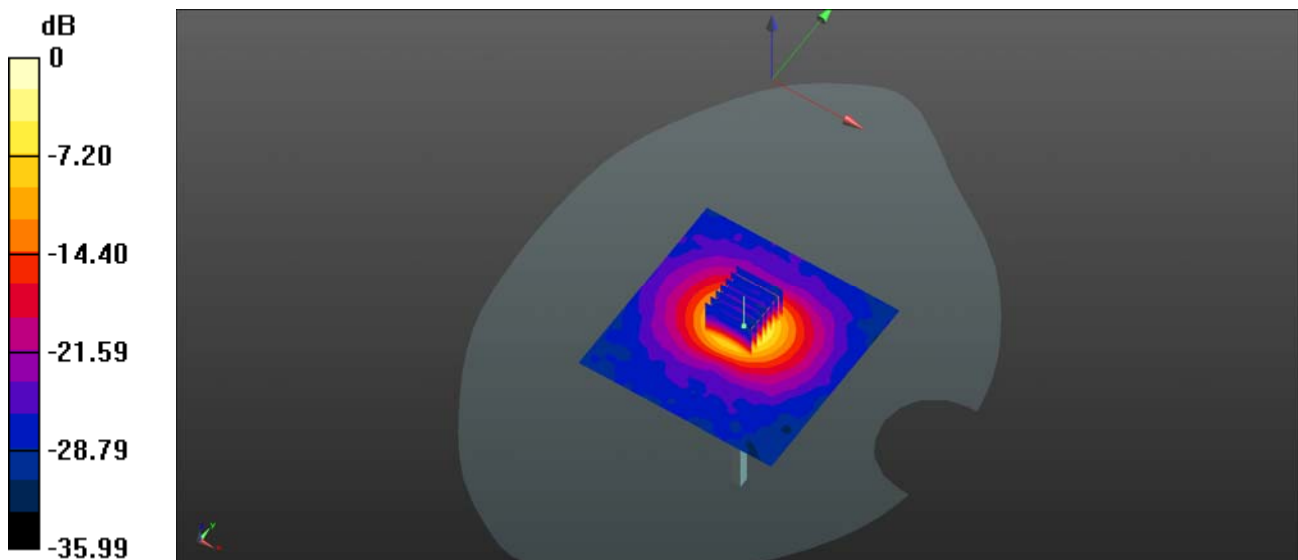
Ambient Temperature : 23.2 °C; Liquid Temperature : 22.6 °C

DASY5 Configuration:

- Probe: EX3DV4 - SN7445; ConvF(4.32, 4.32, 4.32); Calibrated: 2018.09.04;
- Sensor-Surface: 2mm (Mechanical Surface Detection)
- Electronics: DAE4 Sn1516; Calibrated: 2018.07.14
- Phantom: SAM V8.0 ; Type: QD 000 P41 AA; Serial: 1922
- Measurement SW: DASY52, Version 52.8 (8); SEMCAD X Version 14.6.10 (7331)

CW 5600/Area Scan (201x201x1): Interpolated grid: dx=0.5000 mm, dy=0.5000 mm
 Maximum value of SAR (interpolated) = 8.45 W/kg

CW 5600/Zoom Scan (7x7x13)/Cube 0: Measurement grid: dx=4mm, dy=4mm, dz=2mm
 Reference Value = 32.87 V/m; Power Drift = -0.06 dB
 Peak SAR (extrapolated) = 39.4 W/kg
SAR(1 g) = 7.93 W/kg; SAR(10 g) = 2.22 W/kg
 Maximum value of SAR (measured) = 17.1 W/kg



0 dB = 8.45 W/kg

System Check_5750MHz_Head_190312

Communication System: UID 0, CW (0); Frequency: 5750 MHz; Duty Cycle: 1:1

Medium: HSL_5750 Medium parameters used: $f = 5750$ MHz; $\sigma = 5.002$ S/m; $\epsilon_r = 35.815$; $\rho = 1000$ kg/m³

Ambient Temperature : 23.2 °C; Liquid Temperature : 22.6 °C

DASY5 Configuration:

- Probe: EX3DV4 - SN7445; ConvF(4.59, 4.59, 4.59); Calibrated: 2018.09.04;
- Sensor-Surface: 2mm (Mechanical Surface Detection)
- Electronics: DAE4 Sn1516; Calibrated: 2018.07.14
- Phantom: SAM V8.0 ; Type: QD 000 P41 AA; Serial: 1922T
- Measurement SW: DASY52, Version 52.8 (8); SEMCAD X Version 14.6.10 (7331)

CW 5800/Area Scan (101x101x1): Interpolated grid: dx=1.000 mm, dy=1.000 mm

Maximum value of SAR (interpolated) = 15.5 W/kg

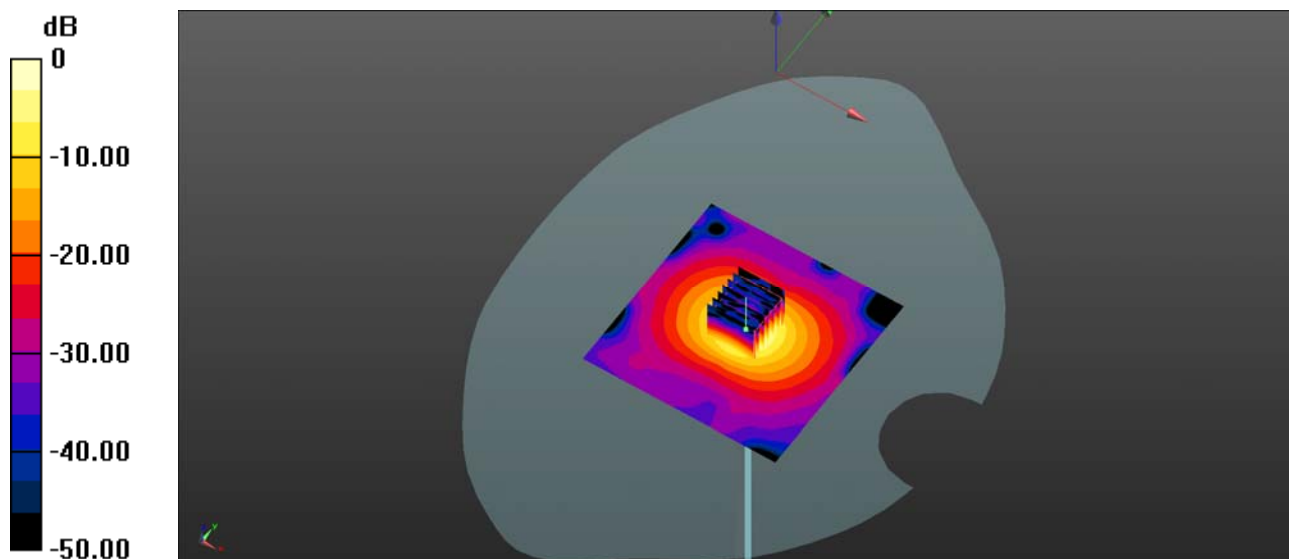
CW 5800/Zoom Scan (7x7x13)/Cube 0: Measurement grid: dx=4mm, dy=4mm, dz=2mm

Reference Value = 37.80 V/m; Power Drift = 0.10 dB

Peak SAR (extrapolated) = 37.3 W/kg

SAR(1 g) = 8.02 W/kg; SAR(10 g) = 2.29 W/kg

Maximum value of SAR (measured) = 15.5 W/kg



0 dB = 15.5 W/kg

System Check_750MHz_Body_190326

DUT: Dipole 750 MHz

Communication System: UID 0, CW (0); Frequency: 750 MHz; Duty Cycle: 1:1

Medium: MSL_750_190326 Medium parameters used: $f = 750$ MHz; $\sigma = 0.963$ S/m; $\epsilon_r = 54.224$; $\rho = 1000$ kg/m³

Ambient Temperature : 23.2 °C; Liquid Temperature : 22.1 °C

DASY5 Configuration:

- Probe: EX3DV4 - SN7445; ConvF(10.05, 10.05, 10.05); Calibrated: 2018.09.04;
- Sensor-Surface: 4mm (Mechanical Surface Detection)
- Electronics: DAE4 Sn1516; Calibrated: 2018.07.14
- Phantom: SAM 2; Type: QD000P40CC; Serial: TP:1464
- Measurement SW: DASY52, Version 52.8 (8); SEMCAD X Version 14.6.10 (7331)

CW 750/Area Scan (81x81x1): Interpolated grid: dx=1.500 mm, dy=1.500 mm

Maximum value of SAR (interpolated) = 3.21 W/kg

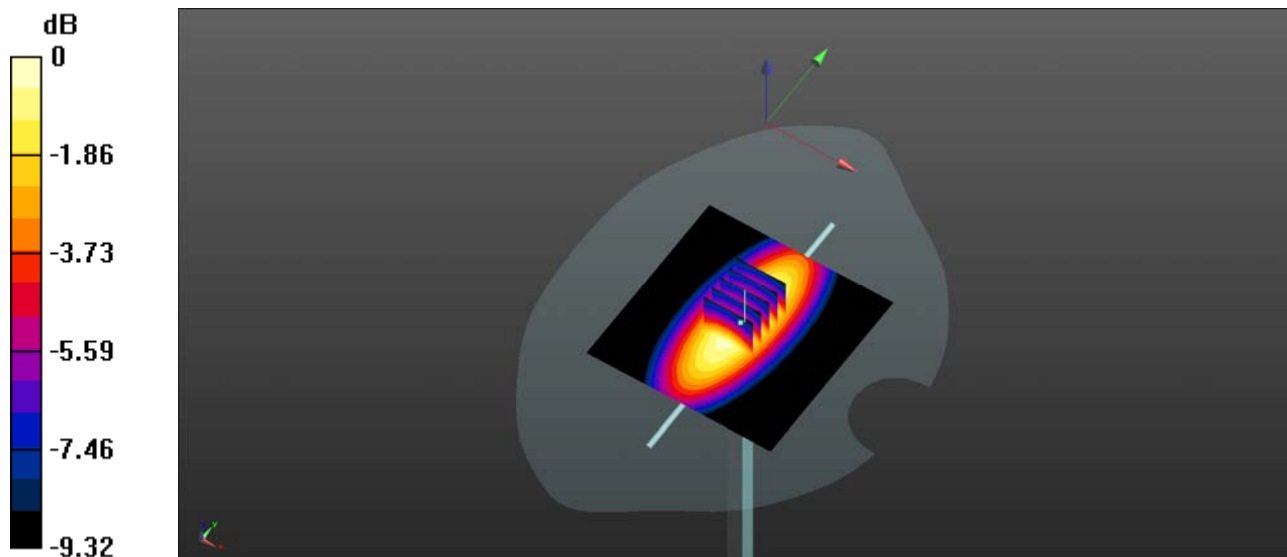
CW 750/Zoom Scan (5x5x7)/Cube 0: Measurement grid: dx=8mm, dy=8mm, dz=5mm

Reference Value = 66.25 V/m; Power Drift = 0.02 dB

Peak SAR (extrapolated) = 5.86 W/kg

SAR(1 g) = 2.12 W/kg; SAR(10 g) = 1.42 W/kg

Maximum value of SAR (measured) = 3.20 W/kg



0 dB = 3.21 W/kg

System Check_835MHz_Body_190306

Communication System: UID 0, CW (0); Frequency: 835 MHz; Duty Cycle: 1:1

Medium: MSL_835_190306 Medium parameters used: $f = 835 \text{ MHz}$; $\sigma = 0.943 \text{ S/m}$; $\epsilon_r = 54.343$; $\rho = 1000 \text{ kg/m}^3$

Ambient Temperature : 23.2 °C; Liquid Temperature : 22.5 °C

DASY5 Configuration:

- Probe: EX3DV4 - SN7445; ConvF(9.69, 9.69, 9.69); Calibrated: 2018.09.04;
- Sensor-Surface: 4mm (Mechanical Surface Detection)
- Electronics: DAE4 Sn1516; Calibrated: 2018.07.14
- Phantom: SAM 1; Type: QD000P40CC; Serial: TP:1471
- Measurement SW: DASY52, Version 52.8 (8); SEMCAD X Version 14.6.10 (7331)

CW 835/Area Scan (81x81x1): Interpolated grid: $dx=1.500 \text{ mm}$, $dy=1.500 \text{ mm}$

Maximum value of SAR (interpolated) = 2.53 W/kg

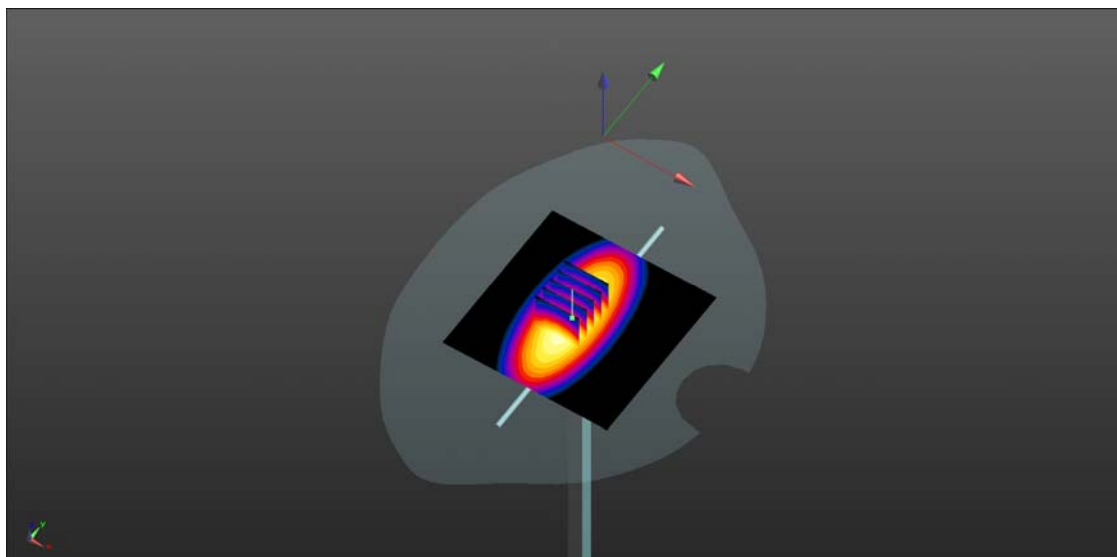
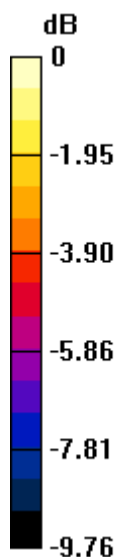
CW 835/Zoom Scan (5x5x7)/Cube 0: Measurement grid: $dx=8\text{mm}$, $dy=8\text{mm}$, $dz=5\text{mm}$

Reference Value = 51.04 V/m; Power Drift = 0.02 dB

Peak SAR (extrapolated) = 3.44 W/kg

SAR(1 g) = 2.45 W/kg; SAR(10 g) = 1.62 W/kg

Maximum value of SAR (measured) = 2.56 W/kg



0 dB = 2.53 W/kg

System Check_1750MHz_Body_190320

Communication System: UID 0, CW (0); Frequency: 1750 MHz; Duty Cycle: 1:1

Medium: MSL_1750_190320 Medium parameters used: $f = 1750$ MHz; $\sigma = 1.536$ S/m; $\epsilon_r = 53.912$; ρ

$= 1000$ kg/m³

Ambient Temperature : 23.5 °C; Liquid Temperature : 22.1 °C

DASY5 Configuration:

- Probe: EX3DV4 - SN7445; ConvF(7.93, 7.93, 7.93); Calibrated: 2018.09.04;
- Sensor-Surface: 4mm (Mechanical Surface Detection)
- Electronics: DAE4 Sn1516; Calibrated: 2018.07.14
- Phantom: SAM 1; Type: QD000P40CC; Serial: TP:1471
- Measurement SW: DASY52, Version 52.8 (8); SEMCAD X Version 14.6.10 (7331)

CW1750/Area Scan (81x81x1): Interpolated grid: dx=1.500 mm, dy=1.500 mm

Maximum value of SAR (interpolated) = 12.0 W/kg

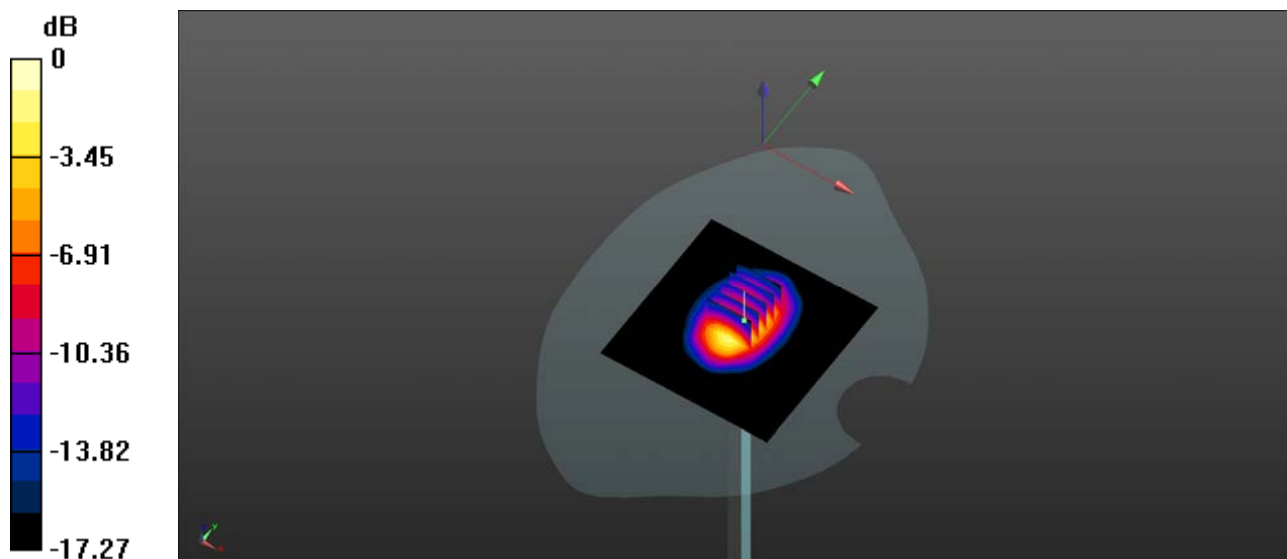
CW1750/Zoom Scan (5x5x7)/Cube 0: Measurement grid: dx=8mm, dy=8mm, dz=5mm

Reference Value = 88.23 V/m; Power Drift = 0.02 dB

Peak SAR (extrapolated) = 20.7 W/kg

SAR(1 g) = 9.49 W/kg; SAR(10 g) = 4.96 W/kg

Maximum value of SAR (measured) = 11.7 W/kg



0 dB = 12.0 W/kg

System Check_1900MHz_Body_190308

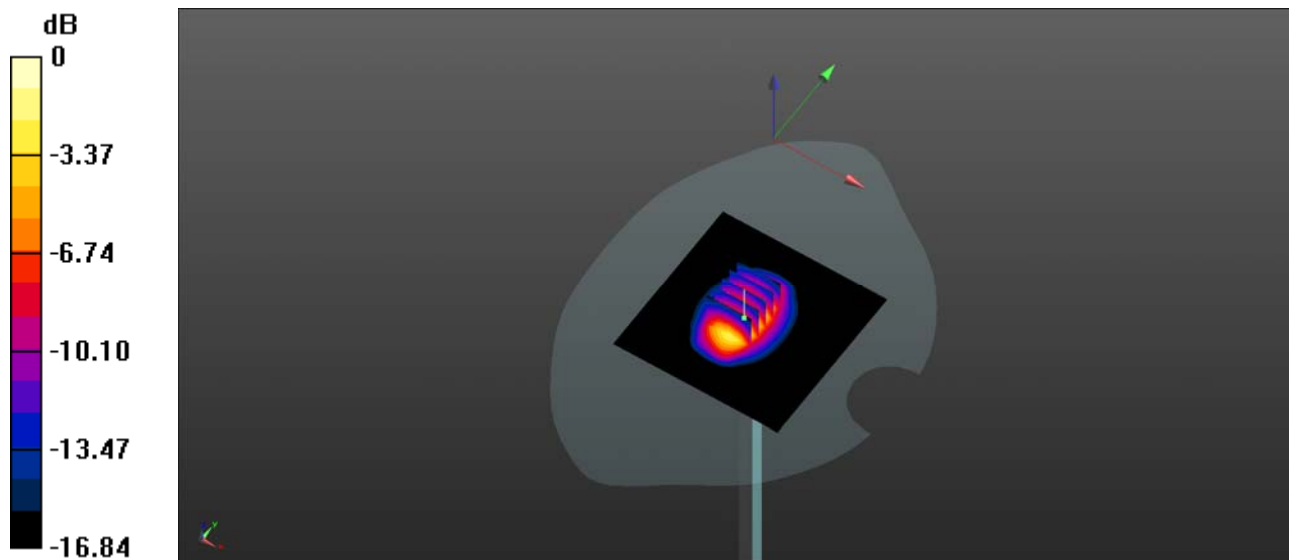
Communication System: UID 0, CW (0); Frequency: 1900 MHz; Duty Cycle: 1:1
Medium: MSL_1900_190308 Medium parameters used: $f = 1900$ MHz; $\sigma = 1.531$ S/m; $\epsilon_r = 52.395$; $\rho = 1000$ kg/m³
Ambient Temperature : 23.2 °C; Liquid Temperature : 22.5 °C

DASY5 Configuration:

- Probe: EX3DV4 - SN7445; ConvF(7.56, 7.56, 7.56); Calibrated: 2018.09.04;;
- Sensor-Surface: 4mm (Mechanical Surface Detection)
- Electronics: DAE4 Sn1516; Calibrated: 2018.07.14
- Phantom: SAM 1; Type: QD000P40CC; Serial: TP:1471
- Measurement SW: DASY52, Version 52.8 (8); SEMCAD X Version 14.6.10 (7331)

CW 1900/Area Scan (81x81x1): Interpolated grid: dx=1.500 mm, dy=1.500 mm
Maximum value of SAR (interpolated) = 11.1 W/kg

CW 1900/Zoom Scan (5x5x7)/Cube 0: Measurement grid: dx=8mm, dy=8mm, dz=5mm
Reference Value = 79.19 V/m; Power Drift = 0.09 dB
Peak SAR (extrapolated) = 18.0 W/kg
SAR(1 g) = 9.92 W/kg; SAR(10 g) = 5.29 W/kg
Maximum value of SAR (measured) = 11.2 W/kg



0 dB = 11.1 W/kg

System Check_2450MHz_Body_190327

Communication System: UID 0, CW (0); Frequency: 2450 MHz;Duty Cycle: 1:1

Medium: MSL_2450_190327 Medium parameters used: $f = 2450$ MHz; $\sigma = 2.036$ S/m; $\epsilon_r = 50.655$; ρ

$= 1000$ kg/m³

Ambient Temperature : 23.5 °C; Liquid Temperature : 22.2 °C

DASY5 Configuration:

- Probe: EX3DV4 - SN7445; ConvF(7.27, 7.27, 7.27); Calibrated: 2018.09.04;
- Sensor-Surface: 4mm (Mechanical Surface Detection)
- Electronics: DAE4 Sn1516; Calibrated: 2018.07.14
- Phantom: SAM 1; Type: QD000P40CC; Serial: TP:1471
- Measurement SW: DASY52, Version 52.8 (8); SEMCAD X Version 14.6.10 (7331)

CW 2450/Area Scan (101x101x1): Interpolated grid: dx=1.200 mm, dy=1.200 mm

Maximum value of SAR (interpolated) = 13.6 W/kg

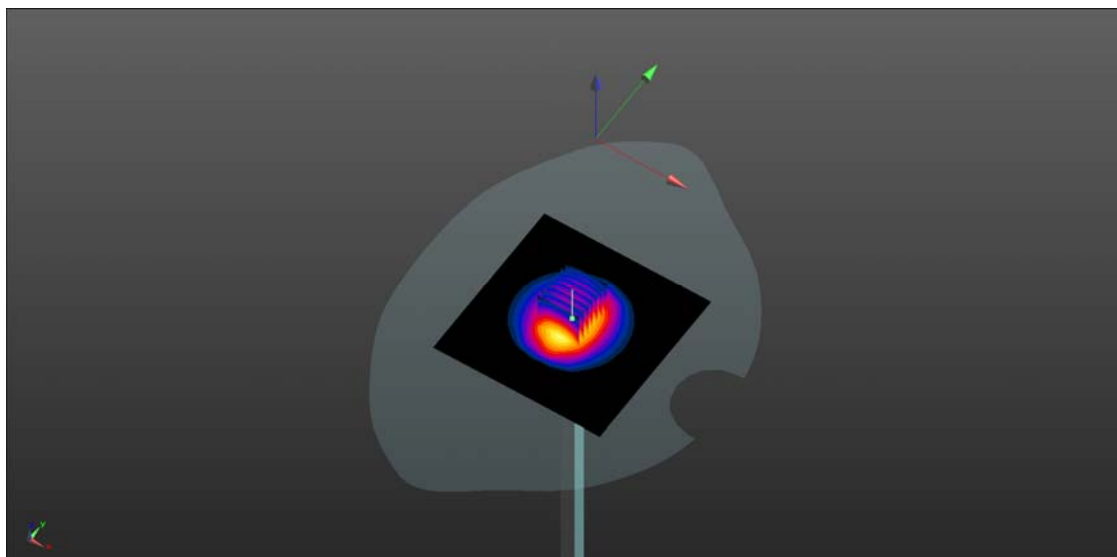
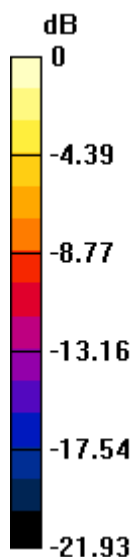
CW 2450/Zoom Scan (7x7x7)/Cube 0: Measurement grid: dx=5mm, dy=5mm, dz=5mm

Reference Value = 112.5 V/m; Power Drift = 0.06 dB

Peak SAR (extrapolated) = 26.3 W/kg

SAR(1 g) = 13.19 W/kg; SAR(10 g) = 6.12 W/kg

Maximum value of SAR (measured) = 20.5 W/kg



0 dB = 20.5 W/kg

System Check_2600MHz_Body_190318

Communication System: UID 0, CW (0); Frequency: 2600 MHz; Duty Cycle: 1:1

Medium: MSL_2600_190318 Medium parameters used: $f = 2600$ MHz; $\sigma = 2.178$ S/m; $\epsilon_r = 50.984$; ρ

$= 1000$ kg/m³

Ambient Temperature : 23.6 °C; Liquid Temperature : 22.6 °C

DASY5 Configuration:

- Probe: EX3DV4 - SN7445; ConvF(6.96, 6.96, 6.96); Calibrated: 2018.09.04;
- Sensor-Surface: 4mm (Mechanical Surface Detection)
- Electronics: DAE4 Sn1516; Calibrated: 2018.07.14
- Phantom: SAM 1; Type: QD000P40CC; Serial: TP:1471
- Measurement SW: DASY52, Version 52.8 (8); SEMCAD X Version 14.6.10 (7331)

CW 2600/Area Scan (101x101x1): Interpolated grid: dx=1.200 mm, dy=1.200 mm

Maximum value of SAR (interpolated) = 15.6 W/kg

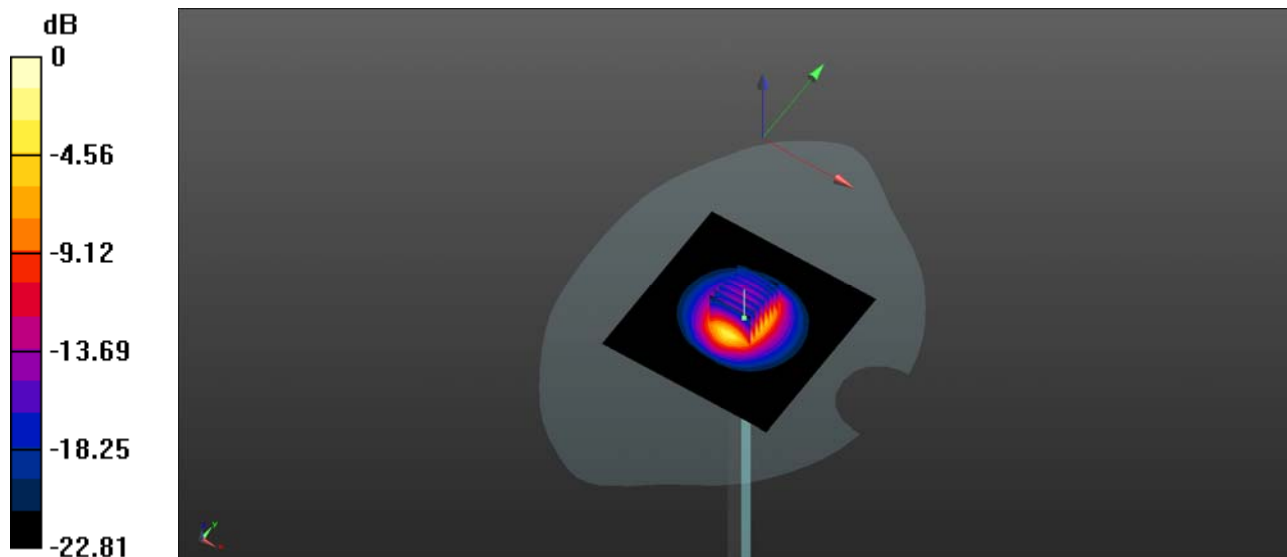
CW 2600/Zoom Scan (7x7x7)/Cube 0: Measurement grid: dx=5mm, dy=5mm, dz=5mm

Reference Value = 82.68 V/m; Power Drift = 0.02 dB

Peak SAR (extrapolated) = 28.7 W/kg

SAR(1 g) = 13.25 W/kg; SAR(10 g) = 5.95 W/kg

Maximum value of SAR (measured) = 15.6 W/kg



0 dB = 15.6 W/kg

System Check_5250MHz_Body_190327

Communication System: UID 0, CW (0); Frequency: 5250 MHz; Duty Cycle: 1:1

Medium: MSL_5250 Medium parameters used: $f = 5250$ MHz; $\sigma = 5.123$ S/m; $\epsilon_r = 49.278$; $\rho = 1000$ kg/m³

Ambient Temperature : 23.2 °C; Liquid Temperature : 22.1 °C

DASY5 Configuration:

- Probe: EX3DV4 - SN7445; ConvF(4.57, 4.57, 4.57); Calibrated: 2018.09.04;
- Sensor-Surface: 2mm (Mechanical Surface Detection)
- Electronics: DAE4 Sn1516; Calibrated: 2018.07.14
- Phantom: SAM V8.0 ; Type: QD 000 P41 AA; Serial: 1922
- Measurement SW: DASY52, Version 52.8 (8); SEMCAD X Version 14.6.10 (7331)

CW 5250/Area Scan (201x201x1): Interpolated grid: dx=0.5000 mm, dy=0.5000 mm
Maximum value of SAR (interpolated) = 8.70 W/kg

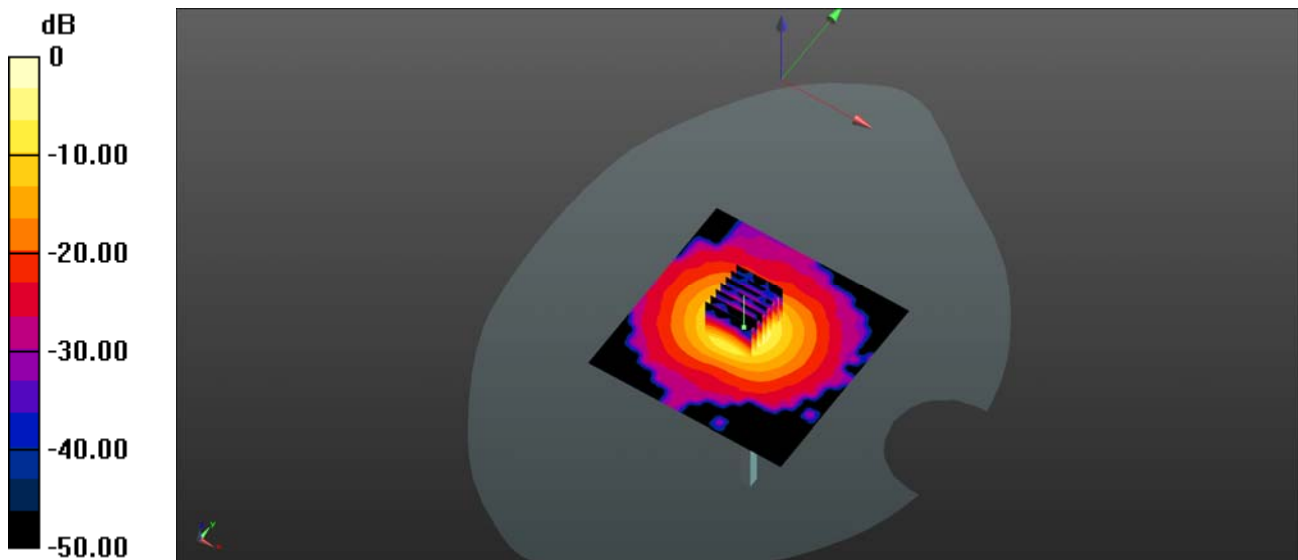
CW 5250/Zoom Scan (7x7x7)/Cube 0: Measurement grid: dx=4mm, dy=4mm, dz=4mm

Reference Value = 34.26 V/m; Power Drift = 0.40 dB

Peak SAR (extrapolated) = 47.1 W/kg

SAR(1 g) = 7.69 W/kg; SAR(10 g) = 2.13 W/kg

Maximum value of SAR (measured) = 8.30 W/kg



0 dB = 8.70 W/kg

System Check_5600MHz_Body_190328

Communication System: UID 0, CW (0); Frequency: 5600 MHz; Duty Cycle: 1:1

Medium: MSL_5600 Medium parameters used: $f = 5600$ MHz; $\sigma = 5.54$ S/m; $\epsilon_r = 47.088$; $\rho = 1000$ kg/m³

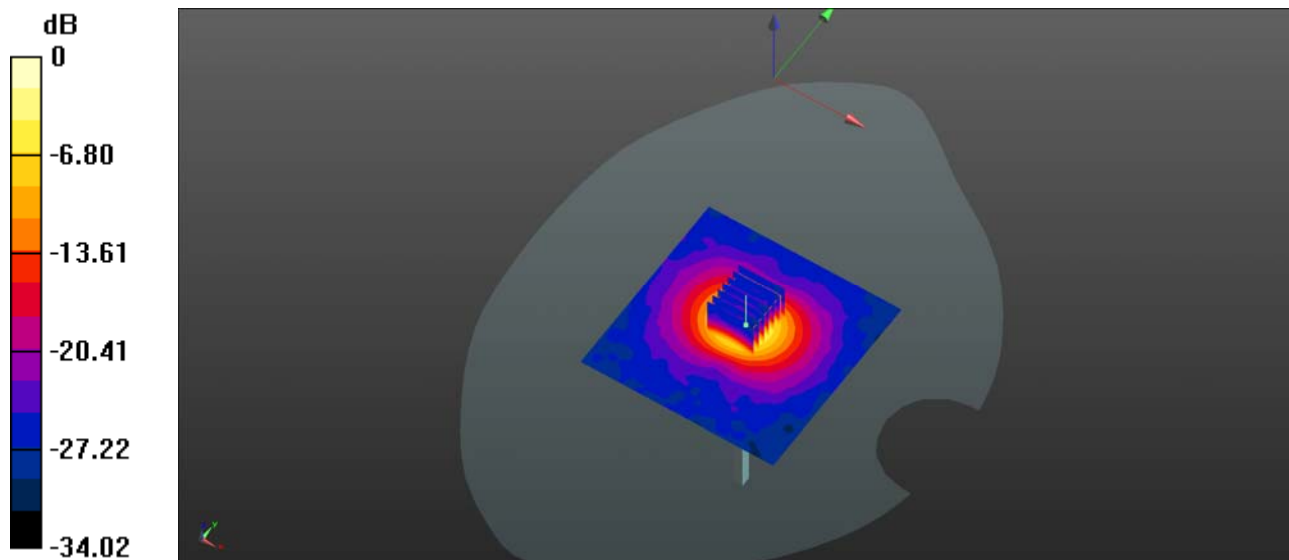
Ambient Temperature : 23.2 °C; Liquid Temperature : 22.1 °C

DASY5 Configuration:

- Probe: EX3DV4 - SN7445; ConvF(3.9, 3.9, 3.9); Calibrated: 2018.09.04;
- Sensor-Surface: 2mm (Mechanical Surface Detection)
- Electronics: DAE4 Sn1516; Calibrated: 2018.07.14
- Phantom: SAM V8.0 ; Type: QD 000 P41 AA; Serial: 1922
- Measurement SW: DASY52, Version 52.8 (8); SEMCAD X Version 14.6.10 (7331)

CW 5600/Area Scan (201x201x1): Interpolated grid: dx=0.5000 mm, dy=0.5000 mm
Maximum value of SAR (interpolated) = 8.80 W/kg

CW 5600/Zoom Scan (7x7x13)/Cube 0: Measurement grid: dx=4mm, dy=4mm, dz=2mm
Reference Value = 32.71 V/m; Power Drift = -0.08 dB
Peak SAR (extrapolated) = 37.4 W/kg
SAR(1 g) = 8 W/kg; SAR(10 g) = 2.23 W/kg
Maximum value of SAR (measured) = 17.3 W/kg



0 dB = 8.80 W/kg = 9.44 dBW/kg

System Check_5750MHz_Body_190328

Communication System: UID 0, CW (0); Frequency: 5750 MHz; Duty Cycle: 1:1

Medium: MSL_5750 Medium parameters used: $f = 5750$ MHz; $\sigma = 5.691$ S/m; $\epsilon_r = 46.444$; $\rho = 1000$ kg/m³

Ambient Temperature : 23.2 °C; Liquid Temperature : 22.1 °C

DASY5 Configuration:

- Probe: EX3DV4 - SN7445; ConvF(3.99, 3.99, 3.99); Calibrated: 2018.09.04;
- Sensor-Surface: 2mm (Mechanical Surface Detection)
- Electronics: DAE4 Sn1516; Calibrated: 2018.07.14
- Phantom: SAM V8.0 ; Type: QD 000 P41 AA; Serial: 1922
- Measurement SW: DASY52, Version 52.8 (8); SEMCAD X Version 14.6.10 (7331)

CW 5750/Area Scan (101x101x1): Interpolated grid: dx=1.000 mm, dy=1.000 mm

Maximum value of SAR (interpolated) = 16.8 W/kg

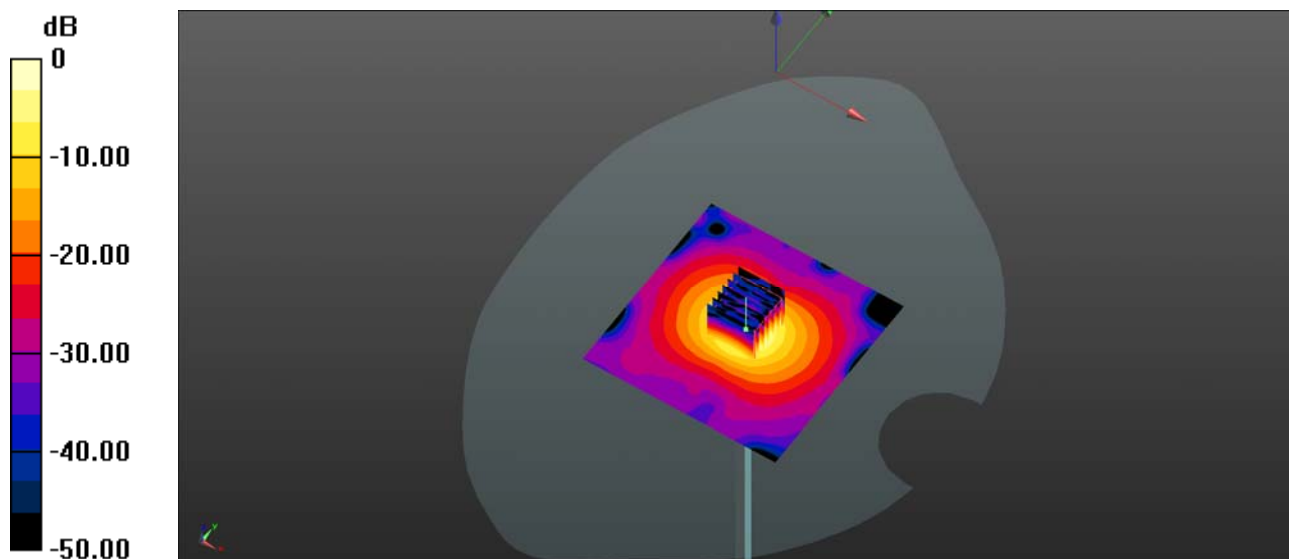
CW 5750/Zoom Scan (7x7x13)/Cube 0: Measurement grid: dx=4mm, dy=4mm, dz=2mm

Reference Value = 37.12 V/m; Power Drift = 0.10 dB

Peak SAR (extrapolated) = 39.8 W/kg

SAR(1 g) = 7.81 W/kg; SAR(10 g) = 2.15 W/kg

Maximum value of SAR (measured) = 16.8 W/kg



0 dB = 16.8 W/kg