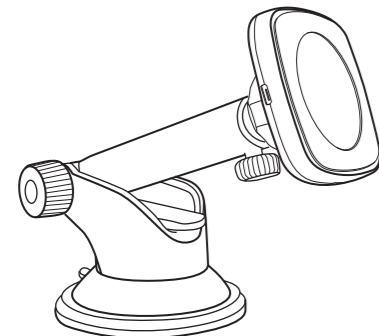


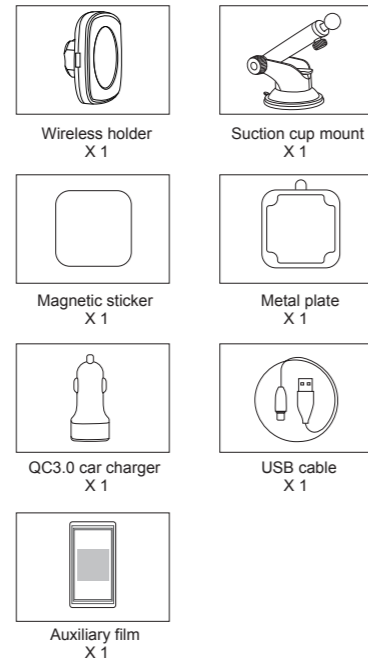
Fast Charging Magnetic Car Holder

User manual
Model: G08

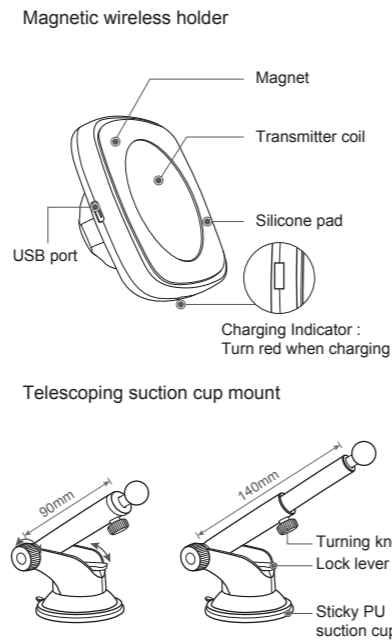


Please read the instructions carefully before using

What is included:



Parameters:



Features:

- Car holder with wireless charging function, charges your phone conveniently when driving
- Designed to provide wireless-charging phones with Max. output 10W
- Full 360 degrees rotation for perfect viewing angle
- Supports mounting on dash or window or air vent.
- Adjustable foot support makes easy to align to the charging center
- Start charging asap as the phone contact with the holder, no need cable anymore
- QC 3.0 USB car charger included so you can start charging readily, with over temperature, over current, over voltage multi-safety protection

Product specification:

Wireless holder			
Input voltage	DC 5V/9V	Input current	2A
Output power	10W(Max)	Frequency	110-205KHZ
QC 3.0 car charger			
Input voltage	DC 12-24V		
Output Current/voltage 1	5V=3A, 9V=2A, 12V=1.5A		
Output Current/voltage 2	5V=2.4A		

Compatible devices:

1. Work well with iPhone X, iPhone 8, iPhone 8Plus, Samsung note 8/S8
2. Also work with all other Qi enabled devices

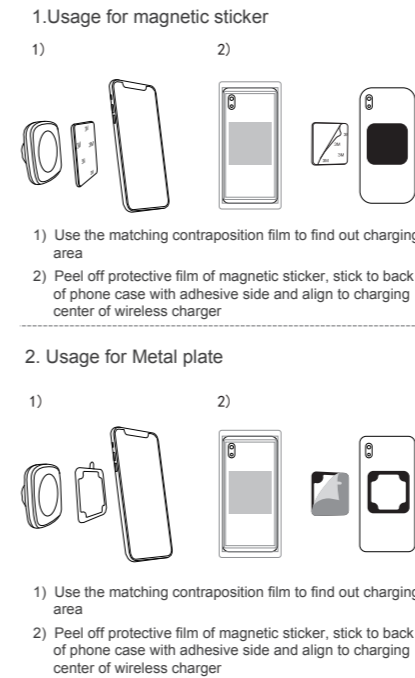
LED mode:

Working state	LED light color
Power transfer	Red, blue, red blue light turn on by turns for once, then off
Standby mode	Light off
Charging	Red light keeps on
FOD Warning	Red light keeps flashing
Charge complete	Red light keeps on

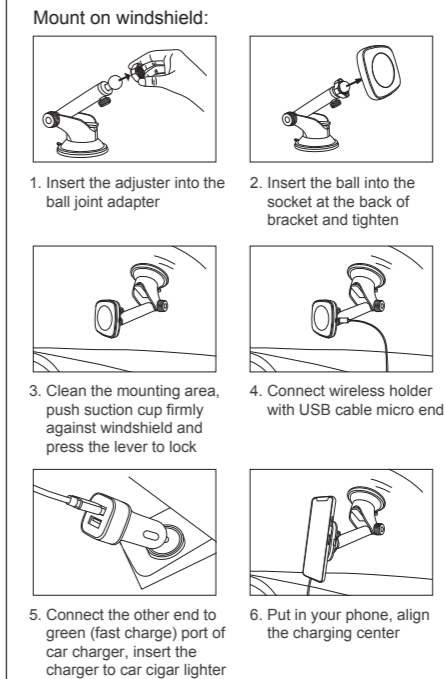
Attentions:

1. Please use the product correctly according instructions
 2. Please do not disassemble the product or throw it to fire and water, to avoid leakage caused by electrical short circuit
 3. Please do not use wireless charger in high temperature, wet, corrosive environment, to avoid leakage from caused by damaged circuit
 4. Please do not put wireless charger close to cards with magnetic stripes or chips (ID card, credit card etc.) to avoid demagnetization
 5. Please keep wireless charger at least 20 CM distance away from implantable medical device (heart pacemaker, Implantable cochlea etc.) to avoid potential interferences
 6. Please do safekeeping, do not let your kids treat wireless charger as toy to avoid unwanted accidents
- The pictures only supplies the reference, please take the actual product as the standard

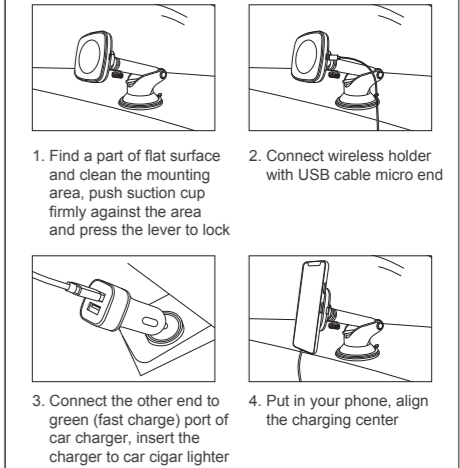
Usage method:



Installation:

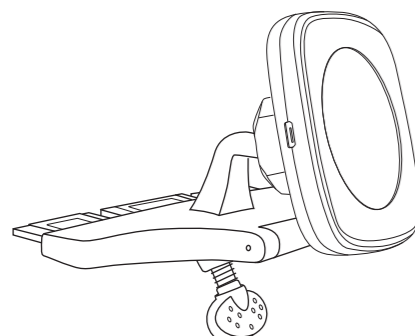


Mount on the dashboard:



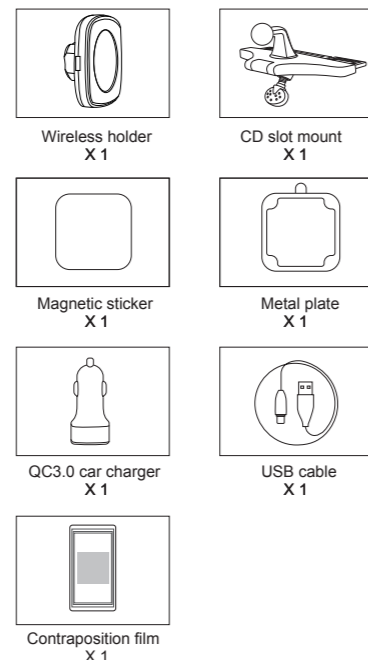
Fast Charging Magnetic Car Holder

User manual

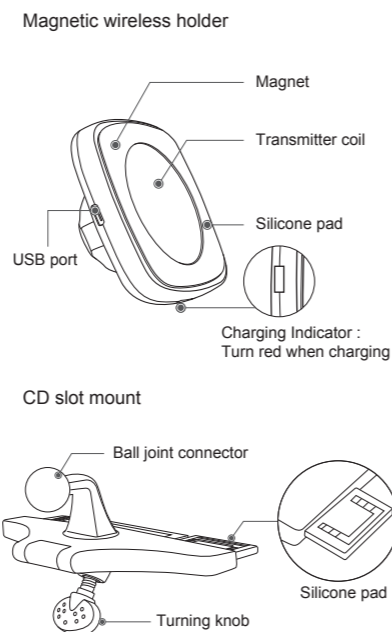


Please read the instructions carefully before using

What is included:



Parameters:



Features:

- Car holder with wireless charging function, charges your phone conveniently when driving
- Designed to provide wireless-charging phones with Max. output 10W
- Full 360 degrees rotation for perfect viewing angle
- Supports mounting on dash or window.
- Start charging asap as the phone contact with the holder, no need cable anymore
- QC 3.0 USB car charger included so you can start charging readily, with over temperature, over current, over voltage multi-safety protection

Product specification:

Wireless holder			
Input voltage	DC 5V/9V	Input current	2A
Output power	10W(Max)	Frequency	110-205KHZ
QC 3.0 car charger			
Input voltage	DC 12-24V		
Output Current/voltage 1	5V=3A, 9V=2A, 12V=1.5A		
Output Current/voltage 2	5V=2.4A		

Compatible devices:

1. Work well with iPhone X, iPhone 8, iPhone 8Plus, Samsung note 8/S8
2. Also work with all other Qi enabled devices

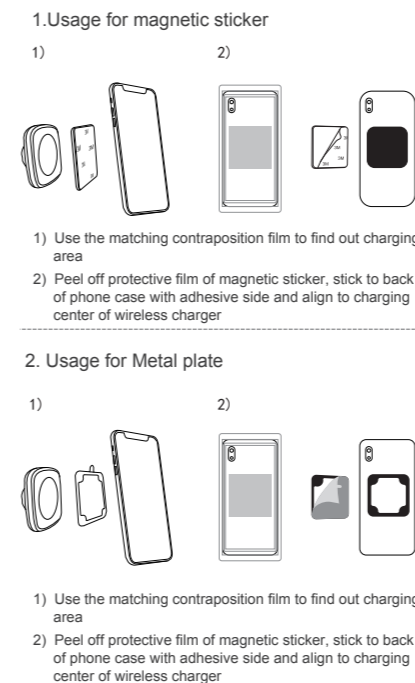
LED mode:

Working state	LED light color
Power transfer	Red, blue, red blue light turn on by turns for once, then off
Standby mode	Light off
Charging	Red light keeps on
FOD Warning	Red light keeps flashing
Charge complete	Red light keeps on

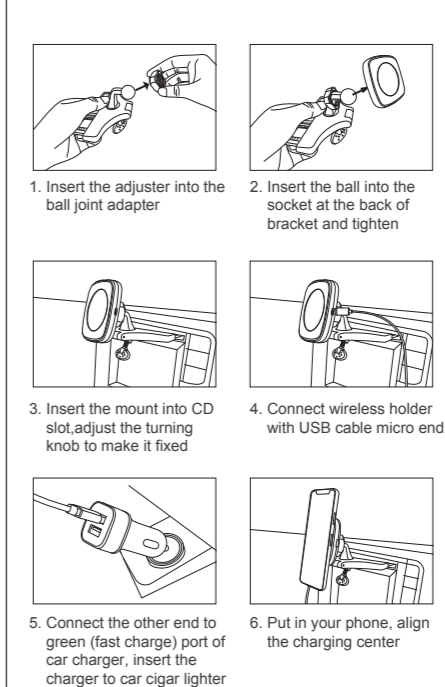
Attentions:

1. Please use the product correctly according instructions
 2. Please do not disassemble the product or throw it to fire and water, to avoid leakage that caused by electrical short circuit
 3. Please do not use wireless charger in high temperature, wet, corrosive environment, to avoid leakage that caused by damaged circuit
 4. Please do not put wireless charger close to cards with magnetic stripes or chips (ID card, credit card etc.) to avoid demagnetization
 5. Please keep wireless charger at least 20 CM distance away from implantable medical device (heart pacemaker, Implantable cochlea etc.) to avoid potential interferences
 6. Please do safekeeping, do not let your kids treat wireless charger as toy to avoid unwanted accidents
- The pictures only supplies the reference, please take the actual product as the standard

Usage method:



Installation:



FCC Statement:

Changes or modifications not expressly approved by the party responsible for compliance could void the user's authority to operate the equipment.

This equipment has been tested and found to comply with the limits for a Class B digital device, pursuant to Part 15 of the FCC Rules. These limits are designed to provide reasonable protection against harmful interference in a residential installation. This equipment generates uses and can radiate radio frequency energy and, if not installed and used in accordance with the instructions, may cause harmful interference to radio communications. However, there is no guarantee that interference will not occur in a particular installation.

If this equipment does cause harmful interference to radio or television reception, which can be determined by turning the equipment off and on, the user is encouraged to try to correct the interference by one or more of the following measures:

- Reorient or relocate the receiving antenna.
- Increase the separation between the equipment and receiver.
- Connect the equipment into an outlet on a circuit different from that to which the receiver is connected.
- Consult the dealer or an experienced radio/TV technician for help.

This device complies with part 15 of the FCC rules. Operation is subject to the following two conditions (1) this device may not cause harmful interference, and (2) this device must accept any interference received, including interference that may cause undesired operation.