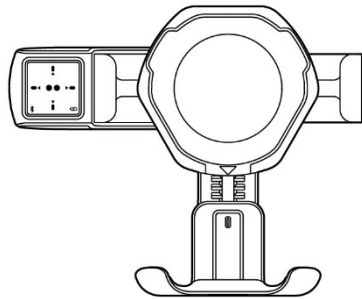


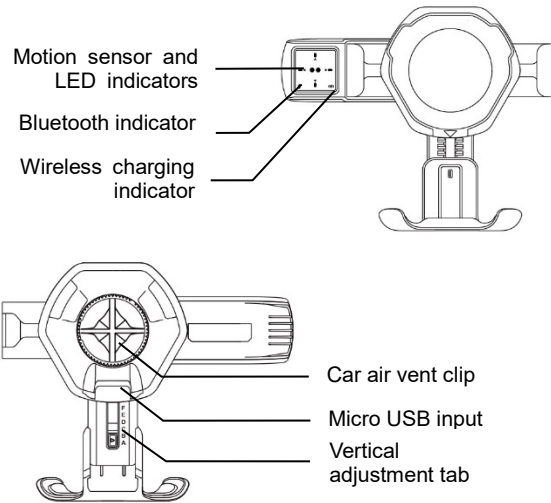
# Wave12(1205/1210) User Manual

## Hand Gesture Controller Bluetooth Connection & Wireless Charging

Version 1.0



### Introducing HPB Wave12



### Product Specifications

- Detection distance: 5~10 cm (from cover glass)
- Detection angle: 42 degrees (from center of sensor)
- BLE connection distance: Max. 6m
- Power Input micro USB:  
Wave1205 DC5V ≡ 1.7A;  
Wave1210 DC9V ≡ 2.1A  
(suggest use cigarette lighter receptacle with USB Type A connector)
- Cradle size (W/H/D): 129.1mm/105.8mm/74.4mm;  
Adjustable width: Min. 66.3mm, Max. 91.5mm;  
Adjustable height: 18.6mm;
- Wireless Charging Power:  
Wave 1205 : Output Power - 5W  
Wave 1210 : Output Power - 10W
- Blue Tooth Frequency : 2.4GHz
- Range of Working Temperature 0~40°C
- Caution : The rated output current of power adapter shall be as below  
Wave 1205:5V/1.7A Wave 1210:9V/2.1A

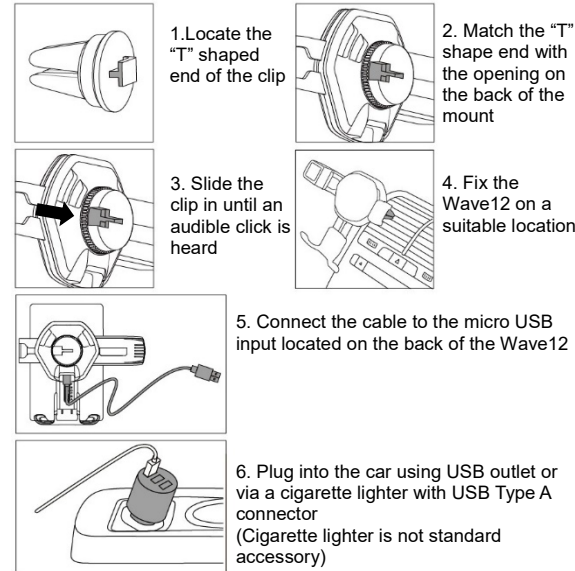
### Package Contents

- HPB Wave12
- Micro USB cable
- User manual
- Car air vent clip

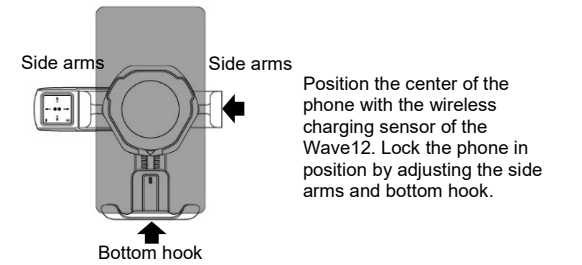
### Disclaimer

The function to hang up phone by using hand gestures is not compatible with iPhone.

### Install your Wave12

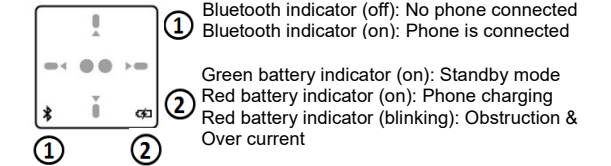


### Phone Placement for Wireless Charging



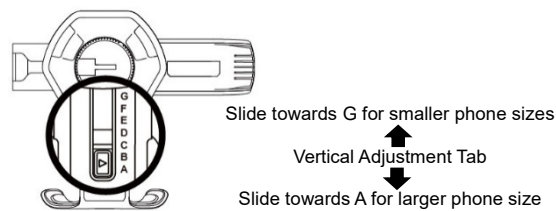
### Light Indication Guide

The light indications are shown on the motion sensor panel on the left of the Wave12 device.



### Vertical Adjustment Guide

The vertical adjustment tab is located on the back of the Wave12. Gently push on the tab to slide the vertical adjustment up and down. Once the desired position is found, release the tab to set the position. There are 7 different adjustable positions (drawing as below).



### Attention

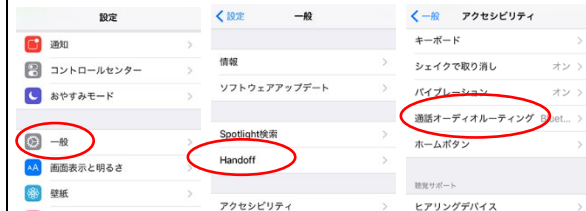
This device is designed to work with your Smart phone and Bluetooth car stereo or Bluetooth speakers. Please check the connection before use. The function to hang up phone using hand gestures is not compatible with iPhone.

### For iPhone (No APP is needed)

\*Support iOS 10.0 and above

#### Car Audio Routing Setting

To set up your phone, go to Settings>General>Accessibility>Call Audio Routing, select "Bluetooth Headset".

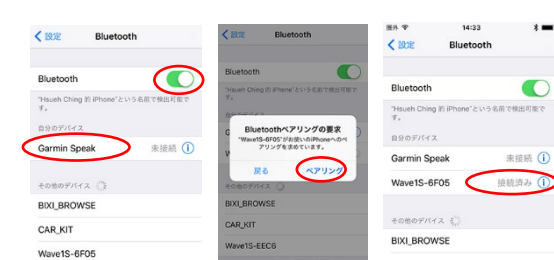


#### Bluetooth Pairing

1. Go to Settings of your iPhone and turn on Bluetooth. iOS system will scan devices automatically. At "Other devices" you may find several Bluetooth devices, select "Wave12-xxxx".

2. System will pop out a pair request dialog box and choose "Pair". Wave12 will be paired and connected. Blue LED will be on.

3. Please double check the Bluetooth, "Wave12-xxxx" is connected in your "My Devices" list.



### For Android Phone (Please download APP "HPB WAVE" before using)

\*Support Android 6.0 and above

#### Install APP & Related Settings

Scan the QR code below or go to your "Play Store" for "HPB Wave" APP installation.

1. Upon completion, click "Yes" to turn on Bluetooth.
2. In the "Settings>Sound & Notification>Notification access", select "hpb wave".
3. In the "Settings>Accessibility", turn hpb wave to "ON".



For Android user : if you connected or used several Bluetooth speakers, you must choose one of them.

#### Bluetooth Pairing

Start hpb wave APP. Click on "Connection Setting" to search for available device "Wave12-xxxx" and select it.

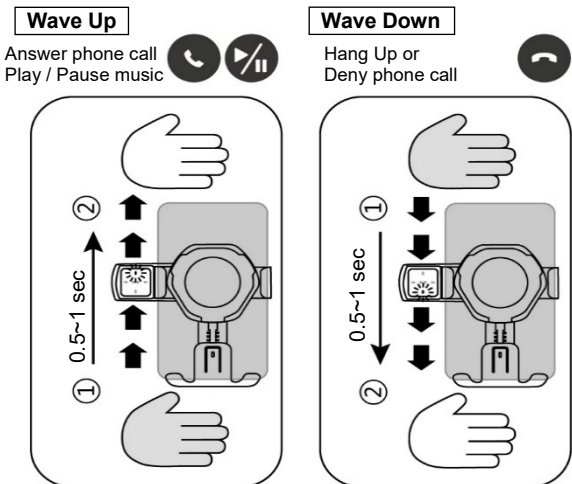


#### More functions on hpb wave App:

- Unpair: To remove the device, click "unpair".
- Search Connection: Click to search available device nearby. If yes, you will see "Wave12-xxxx is connected!".
- Audio Output: There are options for your choice. "Mobile Phone": audio out from your mobile phone "Mobile Speakerphone (voice only)": audio out from your mobile phone speaker "Other devices": It will go to phone system to allow you to connect your target BT devices.

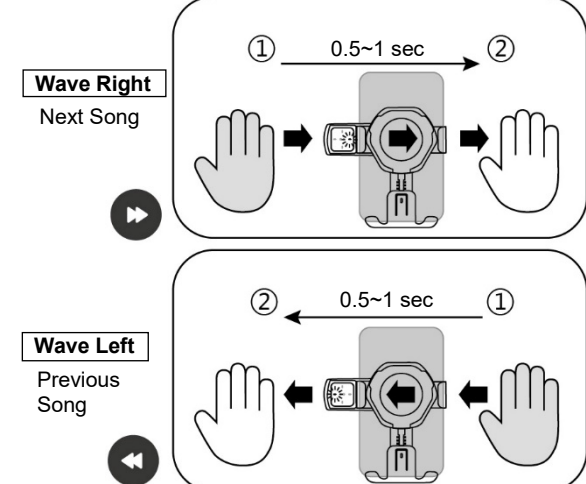
### Operation instructions

Wave hand in front of the motion sensor from position 1 to 2 0.5~1 second



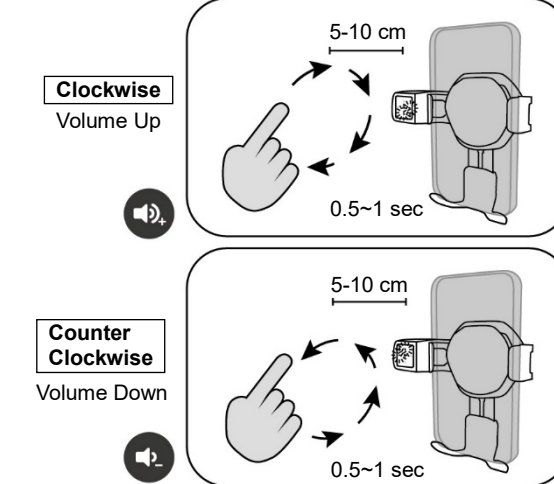
### Operation instructions

Wave hand in front of the motion sensor from position 1 to 2 within 0.5~1 second



### Operation instructions

Wave hand in front of the motion sensor from position 1 to 2 within 0.5~1 second



Hereby · HPB HI-TECH CORP. declares that the radio equipment type [Wave 12 designation of type of RE] is in compliance with Directive 2014/53/EU. The full text of the EU declaration of conformity is available at the following internet address: 10F, No.308 Sec. 1, Neihu Rd, Taipei, Taiwan, R.O.C.

**Federal Communication Commission Interference Statement**  
This equipment has been tested and found to comply with the limits for a Class B digital device, pursuant to Part 15 of the FCC Rules. These limits are designed to provide reasonable protection against harmful interference in a residential installation. This equipment generates, uses, and can radiate radio frequency energy and, if not installed and used in accordance with the instructions, may cause harmful interference to radio communications. However, there is no guarantee that interference will not occur in a particular installation. If this equipment does cause harmful interference to radio or television reception, which can be determined by turning the equipment off and on, the user is encouraged to try to correct the interference by one or more of the following measures:  
• Reorient or relocate the receiving antenna.  
• Increase the separation between the equipment and receiver.  
• Connect the equipment into an outlet on a circuit different from that to which the receiver is connected.  
• Consult the dealer or an experienced radio/TV technician for help.

**FCC Caution:**  
This device complies with Part 15 of the FCC Rules. Operation is subject to the following two conditions: (1) This device may not cause harmful interference, and (2) this device must accept any interference received, including interference that may cause undesired operation. Changes or modifications not expressly approved by the party responsible for compliance could void the user's authority to operate the equipment.

**FCC Radiation Exposure Statement:**  
This equipment complies with FCC radiation exposure limits set forth for an uncontrolled environment. This equipment should be installed and operated with minimum distance 20cm between the radiator & your body.

### Warranty Card

This Limited Warranty is certified that HPB HI-TECH CORP. is guaranteed for free repairs up to 12 months from the date of purchase against assembly / manufacturing faults.  
This warranty does not cover defects resulting from improper or unreasonable use or maintenance; failure to follow operating instructions; accident; excess moisture; insects; lightning; power surges; connections to improper voltage supply; unauthorized alteration or modification of original condition; damages caused by inadequate packing or shipping procedures; loss of, damage to or corruption of stored data; product that requires modification or adaptation to enable it to operate in any country other than the country for which it was designed, manufactured, approved and/or authorized, or repair of products damaged by these modifications; and products purchased from unauthorized dealers.  
This warranty period is effective from 30 days after manufacture month if the warranty card is illegible, removed, altered or damaged.  
HPB or HPB authorized distributor will provide quotation to consumer first for any service demand exceed warranty period. Service demand will conduct after received consumer agreement.

|       |                   |
|-------|-------------------|
| Seal: | Date of Purchase: |
|-------|-------------------|

### Maintenance & Service

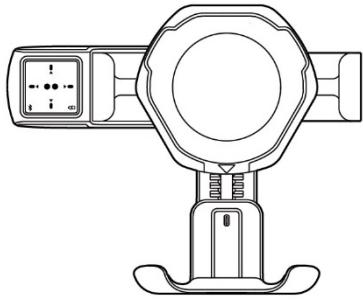
H.P.B. Hi-Tech Corp.  
10F, No.308 Sec. 1, Neihu Rd, Taipei, Taiwan, R.O.C. Tel: 886-2-26581566  
Customer Service Hotline: 886-2-26581566 Email: service@hpbhitech.com



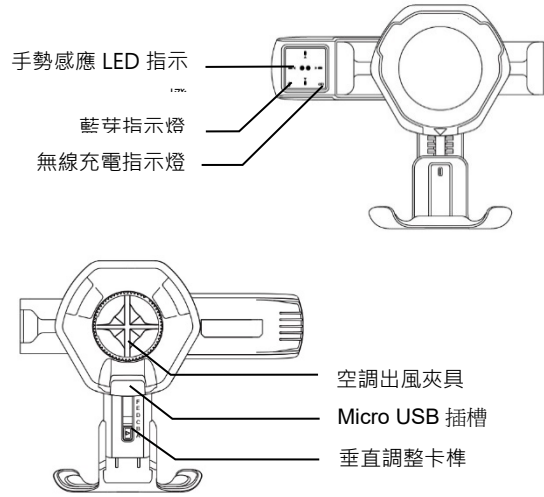
# Wave12(1205/1210)

## 使用手冊

藍芽手勢控制器  
藍芽手勢控制+無線充電  
版本 1.0



### HPB Wave12 產品介紹



### 產品規格

- 最佳偵測距離：5~10 公分 (從產品面板起算)
- 偵測角度：42 度 (從感應器中心起算)
- 藍芽範圍：最大 6 公尺
- 電源輸入 micro USB：  
Wave1205 DC5V 1.7A;  
Wave1210 DC9V 2.1A  
(建議使用具有 USB Type A 接頭的點菸器插座)
- 托架尺寸 (寬/高/深)：129.1mm/105.8mm/74.4mm;  
可調寬度：最小 66.3mm·最大 91.5mm;  
可調高度：18.6mm;
- 無線充電功率：  
Wave1205 - 5W;  
Wave1210 - 10W
- 藍芽使用頻率：2.4GHz
- 工作溫度範圍：0~40°C
- 注意：電源適配器的額定輸出電流應如下所示  
Wave 1205:5V/1.7A Wave 1210:9V/2.1A

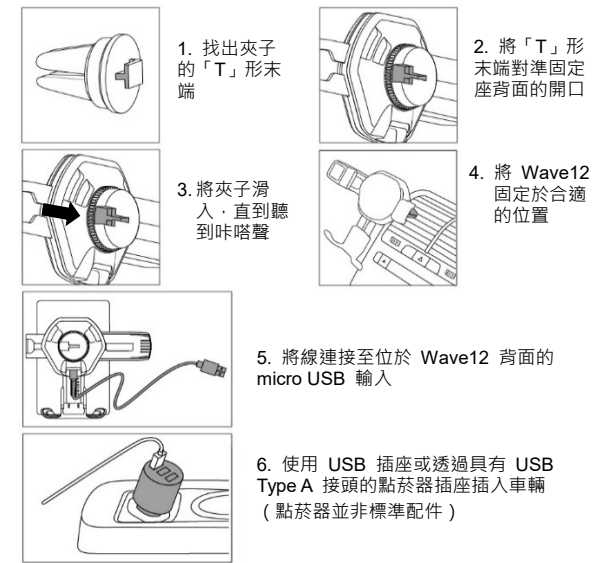
### 包裝內含

- HPB Wave12
- 使用手冊
- Micro USB 線
- 空調出風夾具

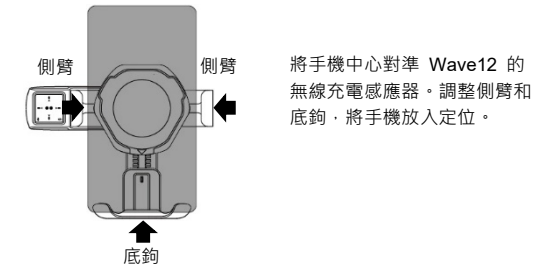
### 免責聲明

iPhone 不支援手勢掛斷電話。

### 安裝您的 Wave12

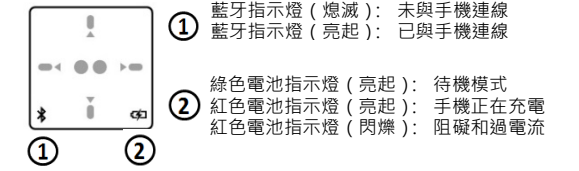


### 無線充電時的電話放置



### 燈光指示指南

燈光指示顯示在 Wave12 裝置左側的動作感應器面板上。



### 垂直調整指南

垂直調整卡榫位於 Wave12 的背面。輕推卡榫上下滑動進行垂直調整。找到所需位置後，放開卡榫以設定位置。有 7 個不同的調整位置可供設定 (如下圖所示)。



### 注意

本產品需搭配手機與藍芽車用音響、藍芽喇叭裝置使用，請先確認手機與車用音響與藍芽喇叭/耳機已連線完成。iPhone 不支援手勢掛斷電話。

### iOS 系統手機設定 (不需使用 APP)

\*支援 iOS 10.0 及以上版本

#### 來電語音設定

從手機中點選「設定>一般>輔助使用>來電語音傳送」，點選「藍芽耳麥」。



#### iPhone 手機與 Wave12 藍芽配對方式

1. 從手機「設定」，開啟藍芽功能。iOS 系統會自動掃描，在「其他裝置」中，會找到藍芽裝置，點選「Wave12-XXXX」。
2. 系統會跳出對話框，要求開啟，點選「配對」。Wave12 將會配對並連線。藍色 LED 燈會開啟。
3. 請務必確認在「我的裝置」中「Wave12-xxxx」連線，藍芽開啟。



### 安卓系統手機設定(使用前請先下載"HPB WAVE"APP)

\*支援 Android 6.0 及以上版本

#### 下載 APP 與相關權限設定

1. 掃描下面左圖的條碼產生器或從手機的「Play 商店」中搜尋並安裝「HPB Wave」應用程式。
2. 程式安裝完成，點選「是」開啟藍芽。
3. 在「設定>音效與通知>通知存取權」，點選「hpb wave」。
4. 從「設定>協助工具」，將 hpb wave「打開」。



#### 安卓手機與 Wave12 藍芽配對方式

開啟 hpb wave 程式，點選「連線設定」，搜尋並點選 "Wave12-xxxx"。

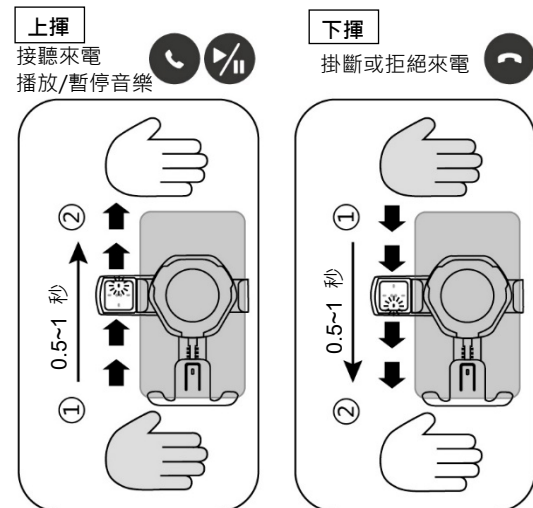


#### hpb wave 程式其他設定

- 解除配對：按下進入畫面，點選裝置將它移除。
- 搜尋連線裝置：按下即開始搜尋藍芽裝置。
- 音源輸出：可選擇以下設定使用語音輸出方式  
"手機"：語音輸出為原始手機音源輸出。  
"手機擴音"：語音輸出為手機擴音輸出。  
"其他裝置"：進入手機設定系統，可自行設定音源輸出。

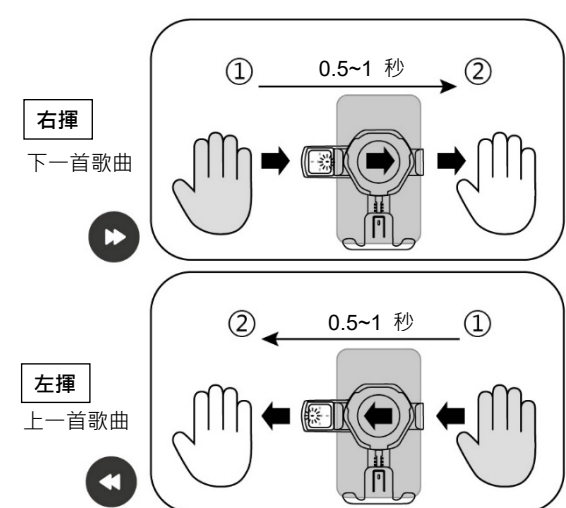
### 手勢操作介紹

在 0.5-1 秒之間，揮動你的手從位置 1 到位置 2



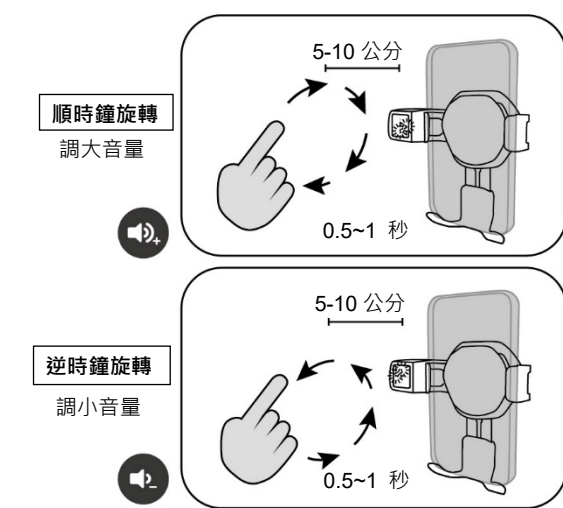
### 手勢操作介紹

在 0.5-1 秒之間，揮動你的手從位置 1 到位置 2



### 手勢操作介紹

在 0.5-1 秒之間，揮動你的手從位置 1 到位置 2



一般設備(低功率電波輻射性電機管理辦法第 12、14 條)  
--- 經型式認證合格之低功率射頻電機，非經許可，公司、商號或使用者均不得擅自變更頻率，加大功率或變更原設計之特性及功能。  
--- 低功率射頻電機之使用不得影響飛航安全及干擾合法通信；經發現有干擾現象時，應立即停用，並改善至無干擾時方得繼續使用。  
前項合法通信，指依電信法規定作業之無線電通信。低功率射頻電機需忍受合法通信或工業、科學及醫療用電波輻射性電機設備之干擾。



### 產品保證卡

- 產品保證相關事項：
- 自購買日起 12 個月內在正常使用狀態下發生故障時，由本公司免費維修。(電池始於消耗品不在保固內。)
  - 如有下列情形之一者，雖在保固期間內恕不提供免費維修。
    1. 由於天災地變或人為疏忽所導致故障或損害。
    2. 由於電源規格不符，使用不當，導致故障或損害。
    3. 自行拆解改裝商品，或非本公司服務人員檢修所引起之故障或損害。
  - 本保證書如有記載不實、空白、損毀、遺失、塗改致字跡無法辨識或經銷商未確認者，以製造日期一個月後起計算保證期間。
  - 自購買日起超過 12 個月保固期後之服務，將先經由公司判斷原因後，提供維修報價給客戶，經客戶確認同意後始維修。
  - 使用前請詳閱說明書，未按說明方法使用，導致機器故障或造成重大事故，本公司恕不保證，並不負法律責任。

|        |       |
|--------|-------|
| 經銷商店章： | 購買日期： |
|--------|-------|

### 產品維修與客戶服務

合錦光電科技股份有限公司  
 台灣台北市內湖路一段 308 號 10 樓 電話: 886-2-26581566  
 客服專線: 886-2-26581566 電郵: service@hpbhitech.com

