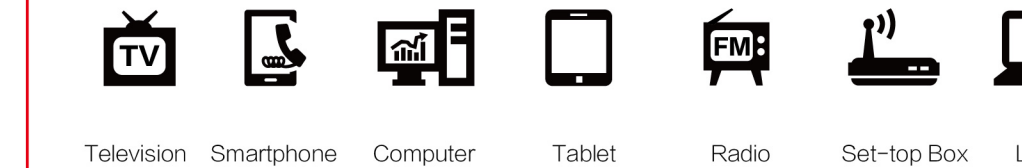




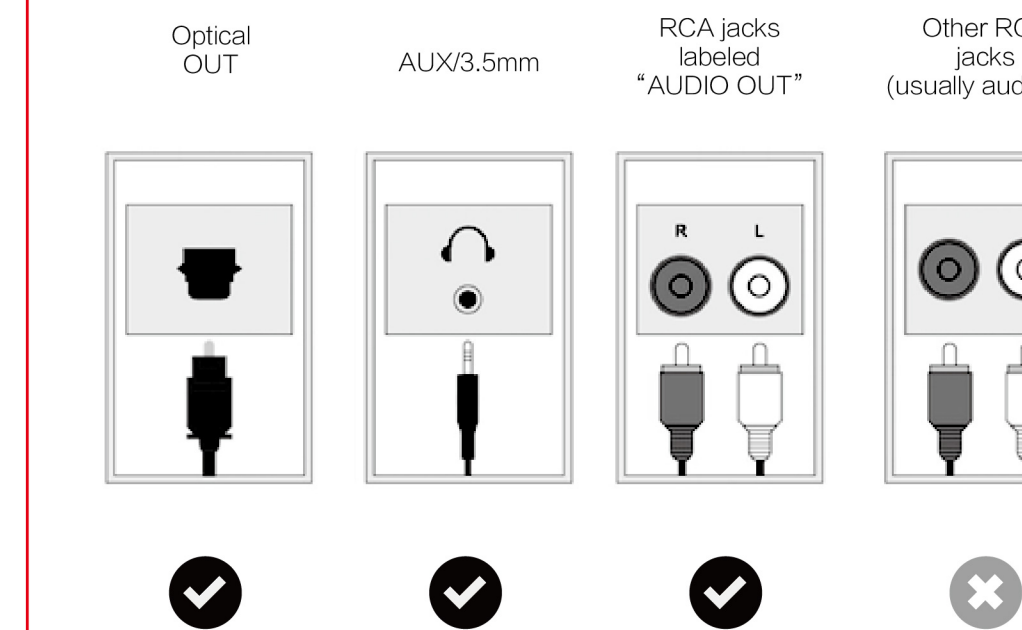
FEATURES

- 30 Meters Wireless Transmission Range
- 15~20 Hours Working Duration
- 2.4GHz Digital Wireless Technology
- One Transmitter can be connected to Several Headphones

COMPATIBLE WITH VARIOUS DEVICES



OUTPUT JACK OPTIONS

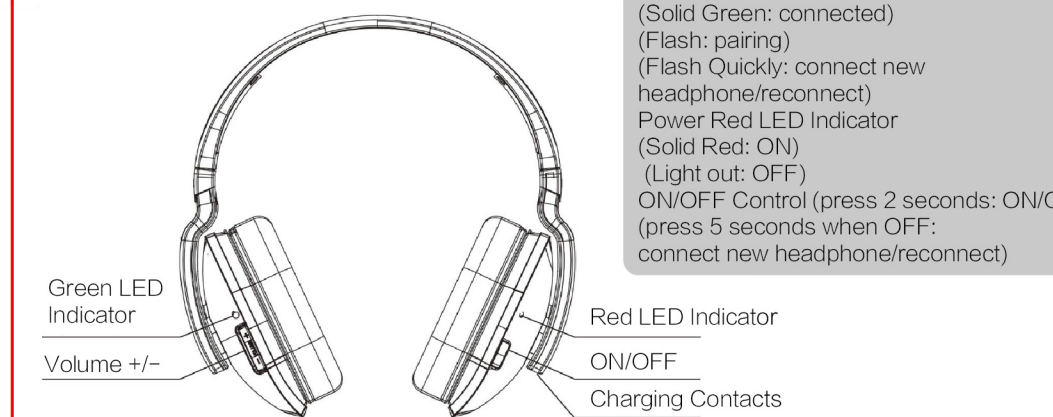


PACKAGE CONTENTS



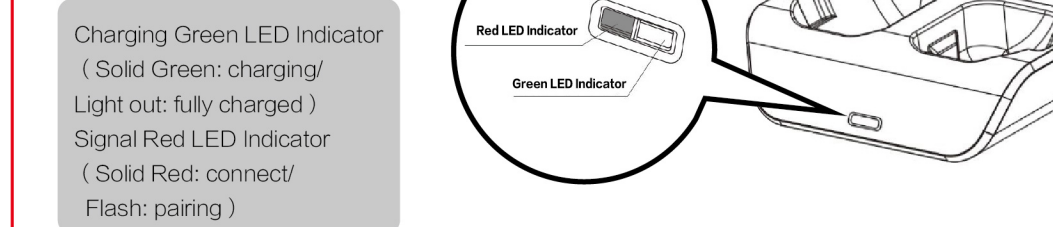
FUNCTION IDENTIFICATION

■ Wireless Headphone

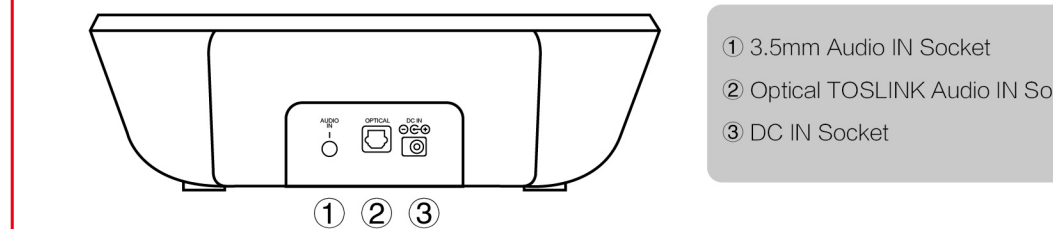


Signal link Green LED Indicator
(Solid Green: connected)
(Flash: pairing)
(Flash Quickly: connect new
headphone/reconnect)
Power Red LED Indicator
(Solid Red: ON)
(Light out: OFF)
ON/OFF Control (press 2 seconds: ON/OFF)
(press 5 seconds when OFF:
connect new headphone/reconnect)

■ Transmitter

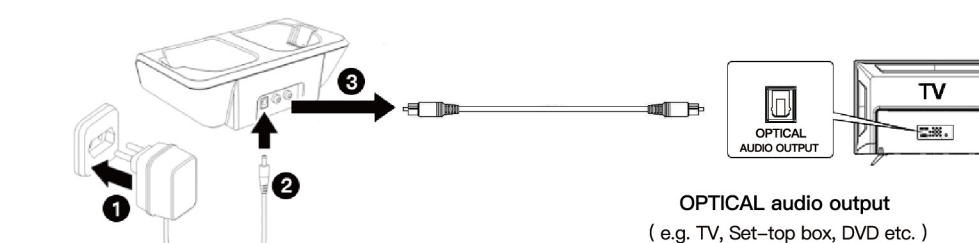


Charging Green LED Indicator
(Solid Green: charging/
Light out: fully charged)
Signal Red LED Indicator
(Solid Red: connect/
Flash: pairing)

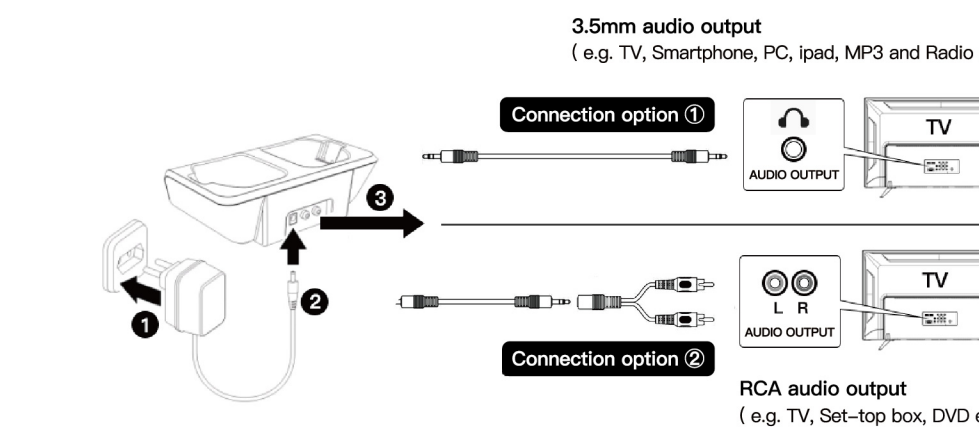


INSTALLATION AND OPERATION

■ Optical input (recommended)



■ Analogue audio input



NOTE:
Please note that only one input (either analogue audio input or optical input/TOSLINK) must be connected. If both the analogue audio input and the optical input/TOSLINK are connected, the priority use is analogue input.

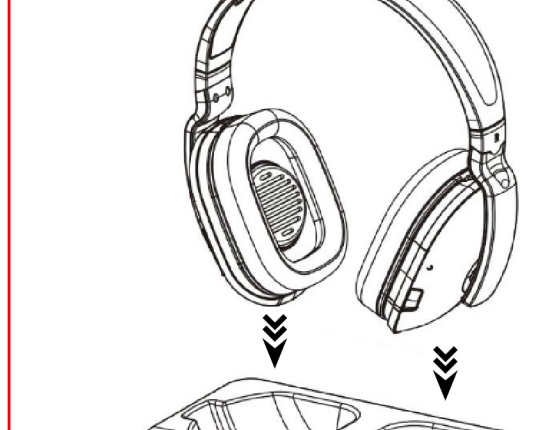
■ CHARGING THE BATTERIES

Charge the Batteries for about 7 hours before first use.

Charging Duration: 5~7 Hours

- Turn OFF the Headphone.
- Retract the Headband.
- Place the Headphone on the Transmitter.

■ CHARGING THE BATTERIES



■ AUTO OFF

- Transmitter will be OFF automatically if there is no audio source signal for around 3 minutes. If the audio source signal returns, the transmitter will automatically switches ON.
- Headphone will be OFF automatically if there is no audio source signal for around 3 minutes.

■ Reconnect/Connect more Headphones

- Disconnect the power of Transmitter.
- Turn OFF the Headphone. Press ON/OFF control for 5 seconds until the Green LED flashes quickly.
- Connect the power of Transmitter.
- Headphone and Transmitter will be connected automatically.

TROUBLESHOOTING

■ No sound

- Ensure that the Transmitter power ON.
- Ensure that the Headphone is ON, Red LED Indicator is in solid red.
- The charge level of the Batteries may be too low. Recharge the Batteries.
- Audio device is ON and PLAY.
- The volume of headphone may be too low, adjust the volume to a moderate level.
- The audio signal input level is too low. Increase the volume of the audio device.

■ Distortion

- Ensure the volume level of Headphone is set to an approximate level.
- The Headphone is too far from the Transmitter, move it closer.
- The audio signal input level is too low. Increase the volume of the audio device.

CAUTION

To protect your hearing, please do not use the headphone at high volume for a long time.
Wireless transmission will produce electromagnetic signal which may interfere the heart pacemaker or other medical instruments properly function.
Please follow your doctor' s instruction.

NOTE: This equipment has been tested and found to comply with the limits for a Class B digital device, pursuant to Part 15 of the FCC Rules. These limits are designed to provide reasonable protection against harmful interference in a residential installation. This equipment generates uses and can radiate radio frequency energy and, if not installed and used in accordance with the instructions, may cause harmful interference to radio communications. However, there is no guarantee that interference will not occur in a particular installation. If this equipment does cause harmful interference to radio or television reception, which can be determined by turning the equipment off and on, the user is encouraged to try to correct the interference by one of the following measures:

- Reorient or relocate the receiving antenna.
- Increase the separation between the equipment and receiver.
- Connect the equipment into an outlet on a circuit different from that to which the receiver is connected.
- Consult the dealer or an experienced radio/TV technician for help.

WARNING: Any changes or modifications not expressly approved by the party responsible for compliance could void the user's authority to operate this equipment.

The device must not be co-located or operating in conjunction with any other antenna or transmitter.

This device complies with FCC' s radiation exposure limits set forth for an uncontrolled environment

TECHNICAL SPECIFICATIONS

Transmission Mode: GFSK	Carrier Frequency: 2.4GHz
Operating Voltage: Transmitter/Charger DC 5V 550mA	Headphone 2*1.2V AAA
Frequency Response: 25Hz~20KHz	Distortion: < 0.5%
S/N Ratio: > 70dB	Operating Distance: 30 meters
Music Time: 15~20 hours	Charge Time: 5~7 hours

ABOUT ARTISTE

ARTISTE TECHNOLOGY LTD.
The 6th Building, No. 173, Dunhe Road,
Haizhu District, Guangzhou, Guangdong, China
www.artiste-audio.com
Tel: 86-20-66319168
Made In China