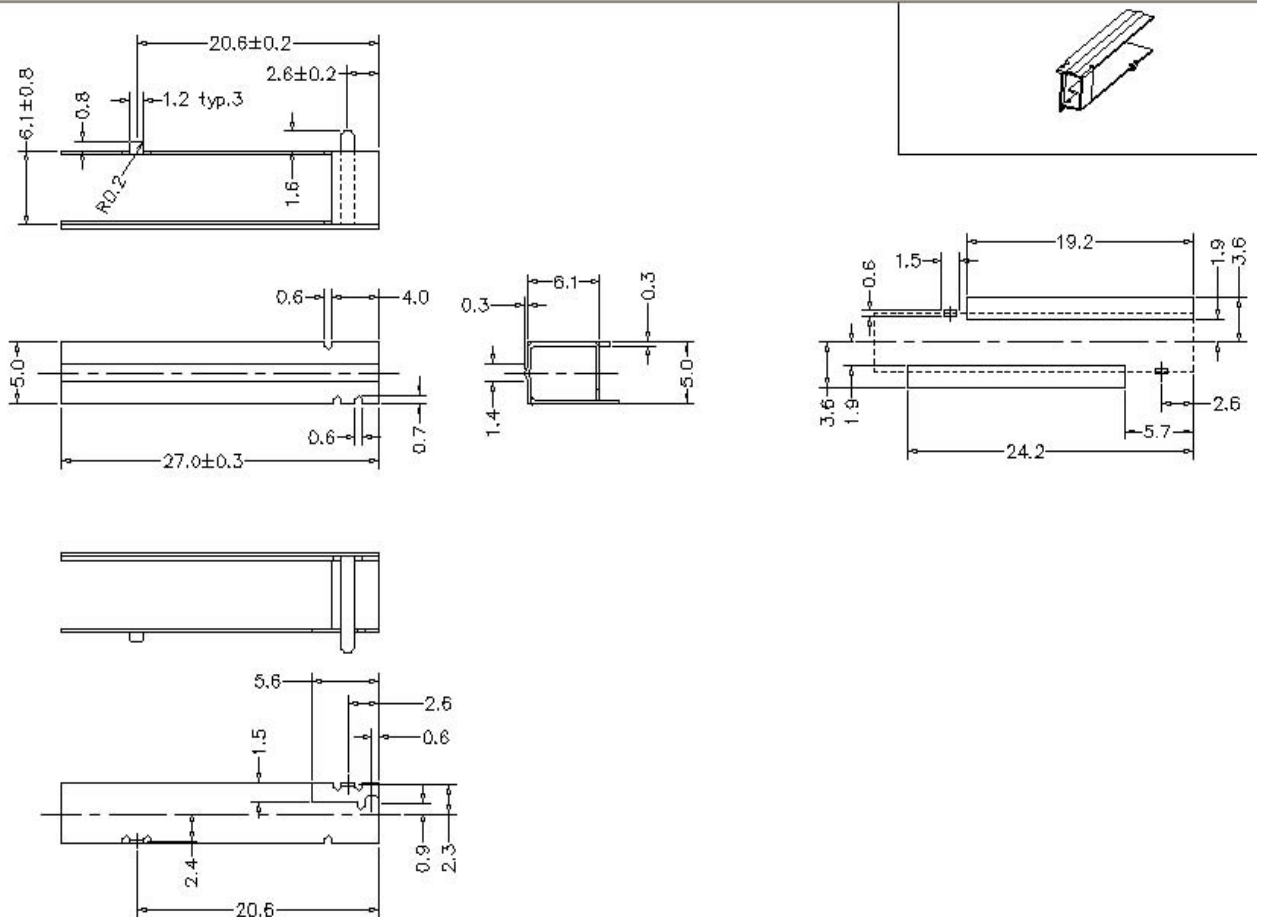


2.4G antenna test report

(Total 8 pages)

1、 Shape and size



2、 Electronic test data

Ambient temperature :26 ° C Ambient humidity :65% The parameters are as follows:

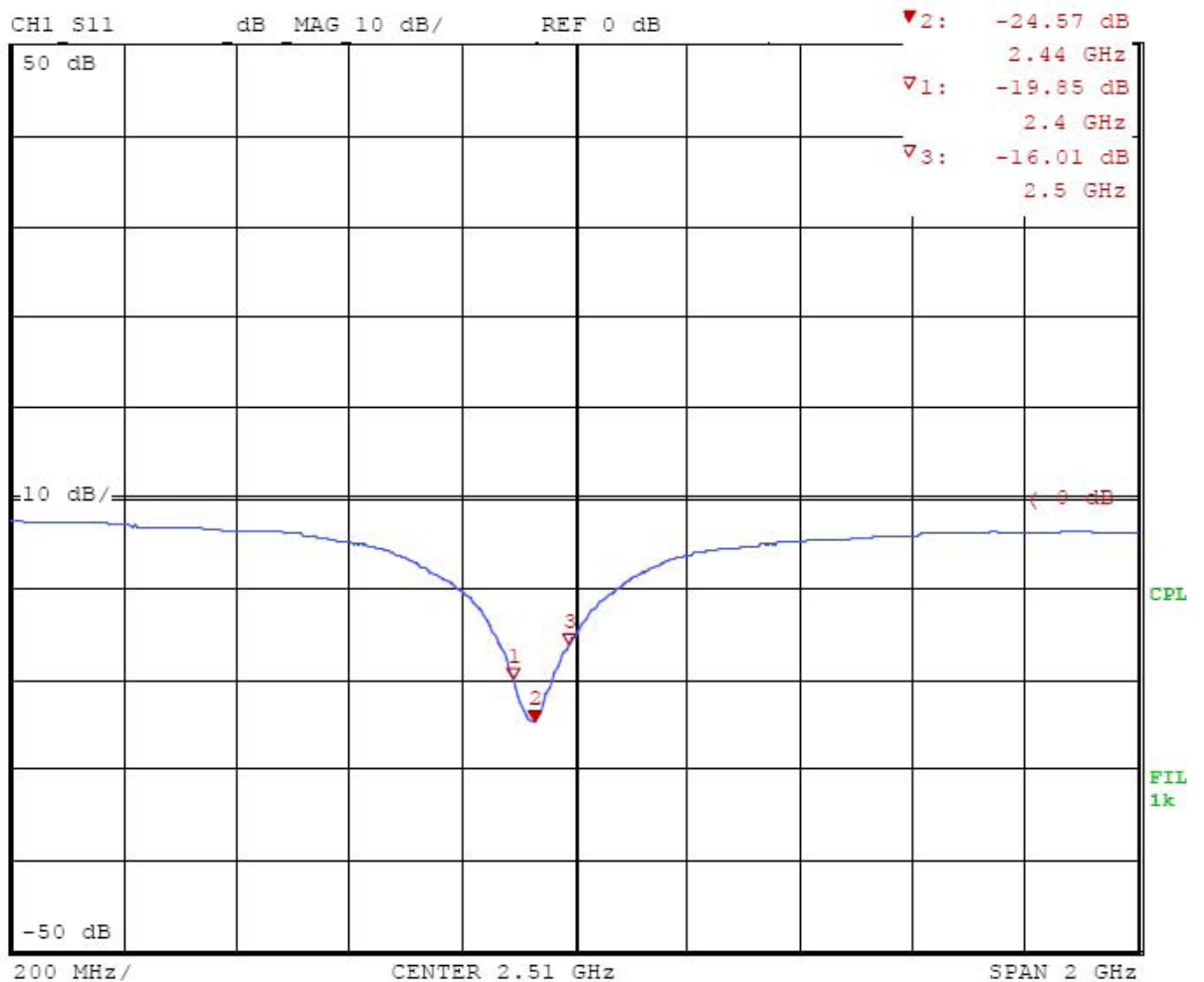
Frequency Range:2400-2500MHz; Impedance:50Ω;

VSWR:<2:1 Across band; Polarization:Linear Average Gain:X-Y

plane:-4.9dbi;Y-Z plane:-3.3dbi;

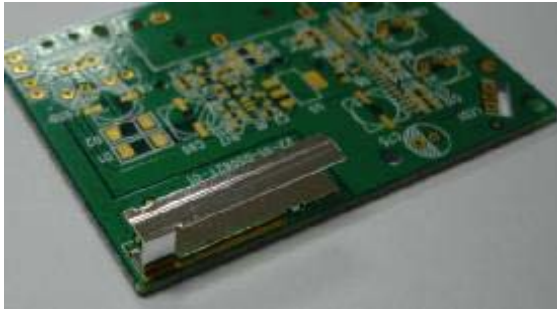
Maximum Gain:X-Y plane:-4.5dbi;Y-Z plane -2.2dbi;

Typical Return Loss:

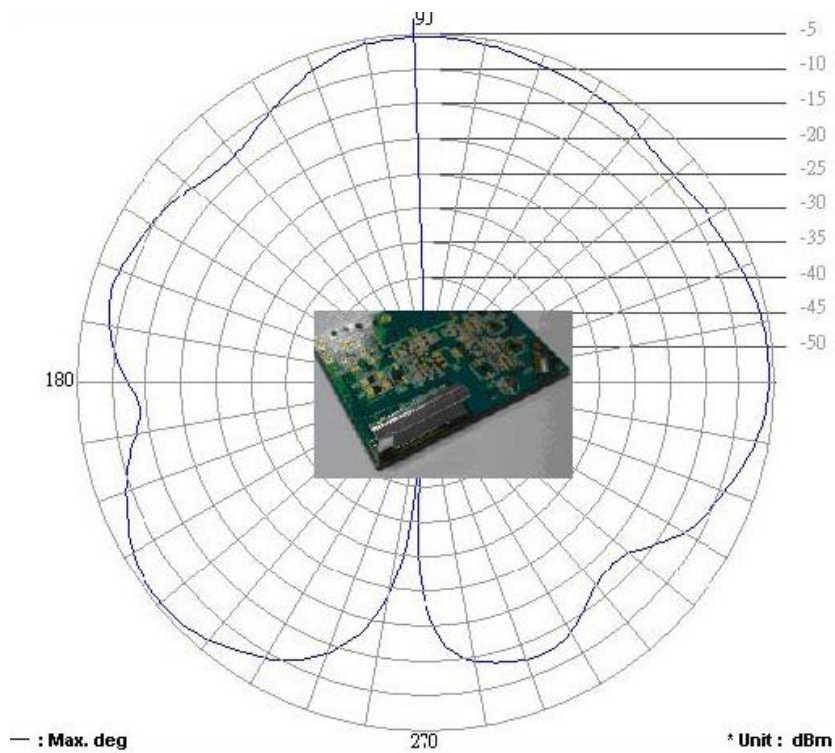


Antenna Radiation Patterns:

X-Y Plane:



Antenna Polarity:Horizontal:

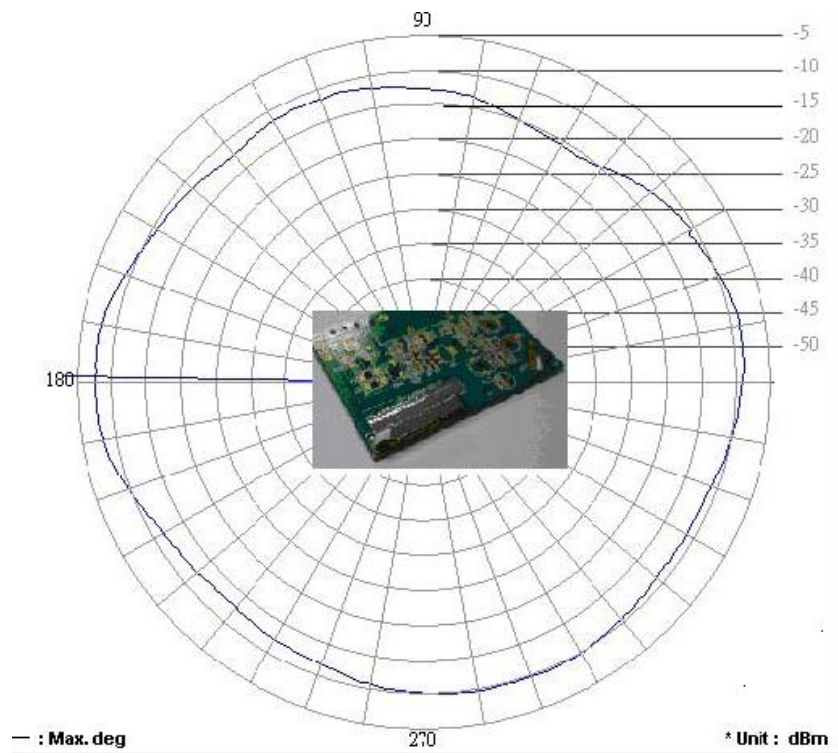


Frequency:2440MHz Average Gain:-8.7dBi

Maximum Gain:-4.5dBi, Maximum Gain (Angle) :95°

Minimum Gain:-48.5dBi, Minimum Gain (Angle) :268°

Antenna Polarity:Vertical:



Frequency:2440MHz Average Gain:-10.76dBi Maximum

Gain:-7.76dBi, Maximum Gain (Angle) :178° Minimum

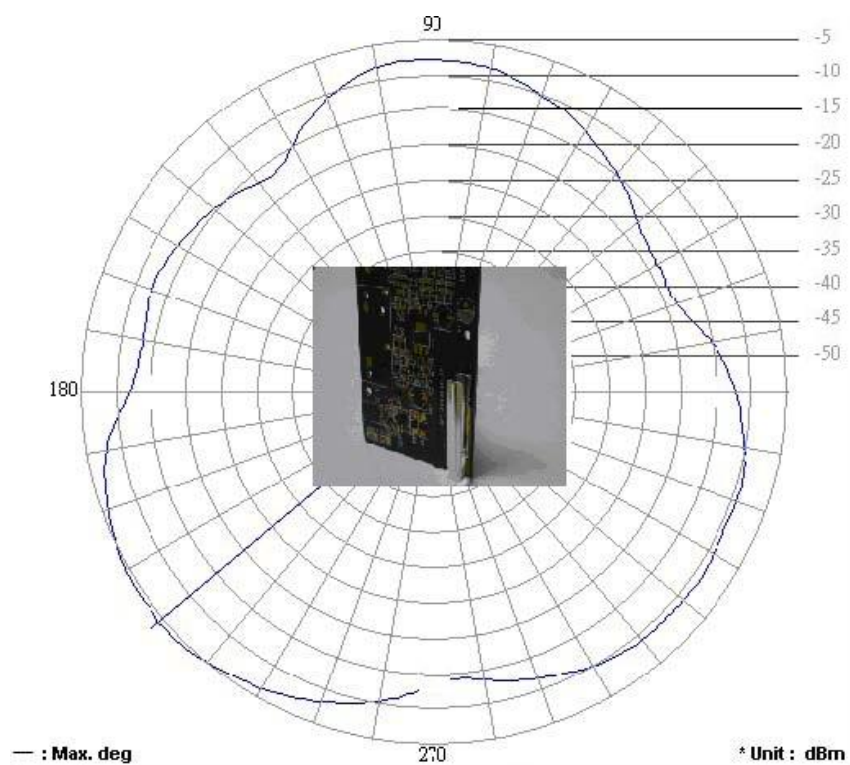
Gain:-16.2dBi, Minimum Gain (Angle) :60°

Antenna Radiation Patterns:

X-Z Plane:

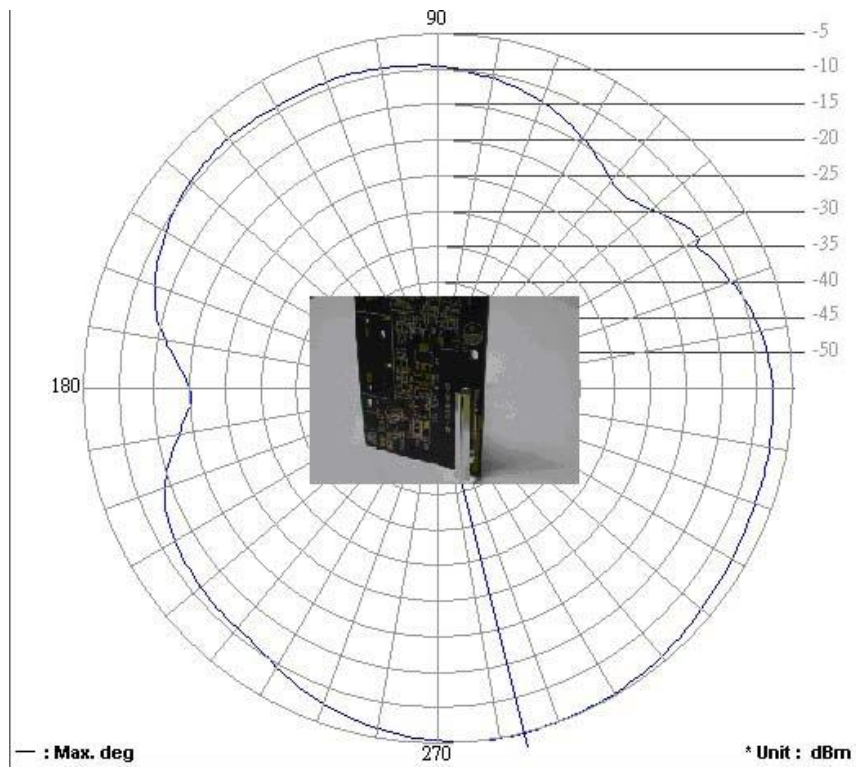


Antenna Polarity:Horizontal:



Frequency:2440MHz Average Gain:-8.8dBi Maximum Gain:-4.9dBi,
 Maximum Gain (Angle) :220° Minimum Gain:-19.0dBi, Minimum Gain
 (Angle) :28°

Antenna Polarity:Vertical:



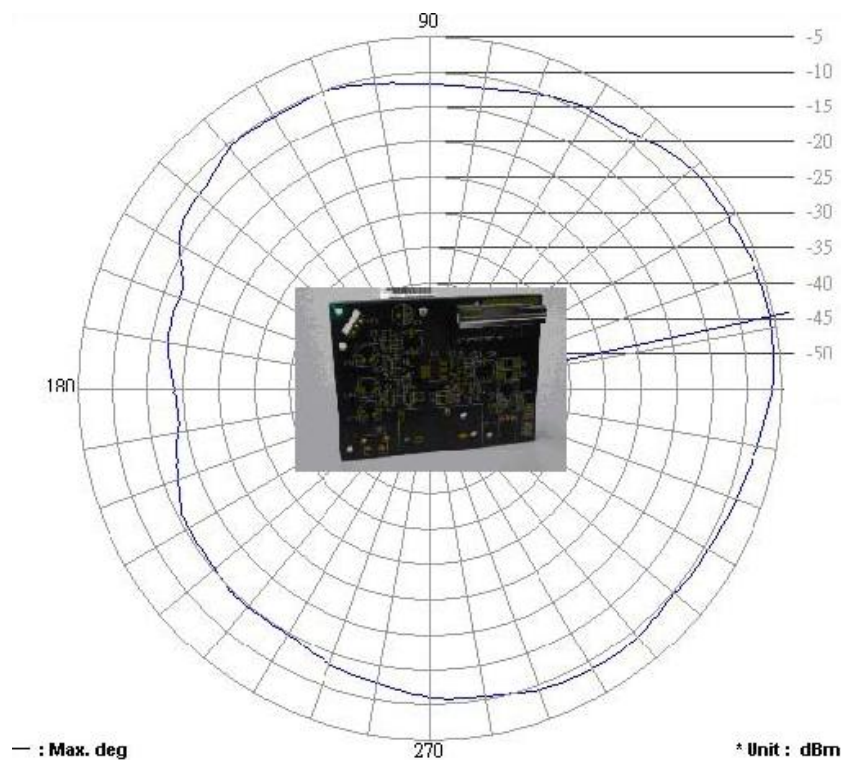
Frequency:2440MHz Average Gain:-8.92dBi Maximum Gain:-4.7dBi,
Maximum Gain (Angle) :284° Minimum Gain:-20.1dBi, Minimum Gain
(Angle) :183°

Antenna Radiation Patterns:

Y-Z Plane:



Antenna Polarity:Horizontal:

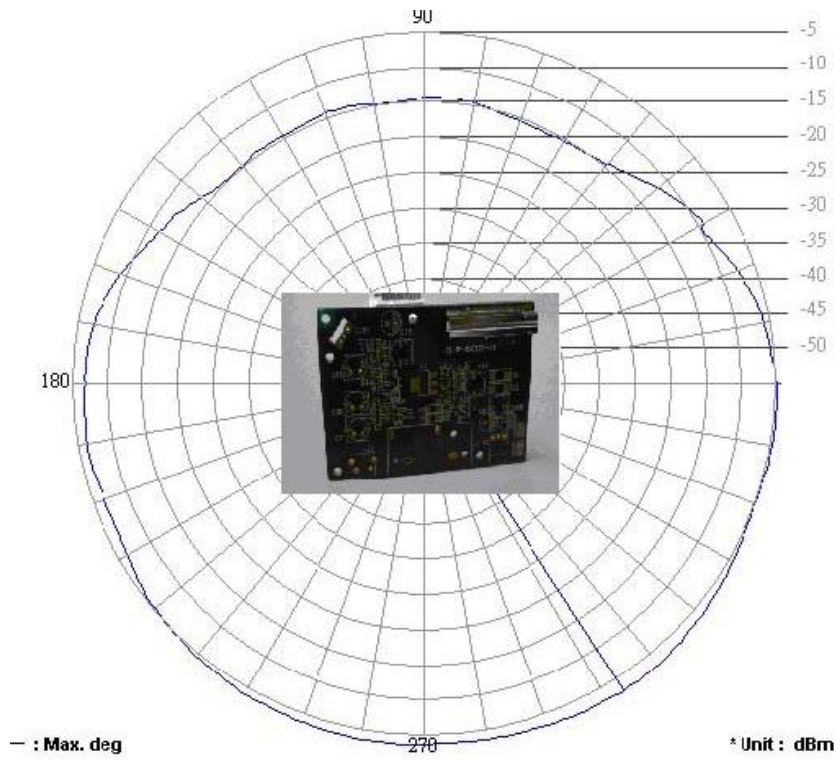


Frequency:2440MHz Average Gain:-8.12dBi Maximum

Gain:-5.65dBi,Maximum Gain(Angle):13° Minimum Gain:-18.2dBi,

Minimum Gain (Angle) :185°

Antenna Polarity:Vertical:



Frequency:2440MHz Average Gain:-6.9dBi Maximum Gain:-2.2dBi,
Maximum Gain(Angle):302° Minimum Gain:-15.2dBi, Minimum Gain
(Angle) :68°