

# Model Difference Letter

We, the undersigned hereby declare, that the following equipment:

Product name: Tracking device

Model : LBCAT-B

---

is electrically equal to:

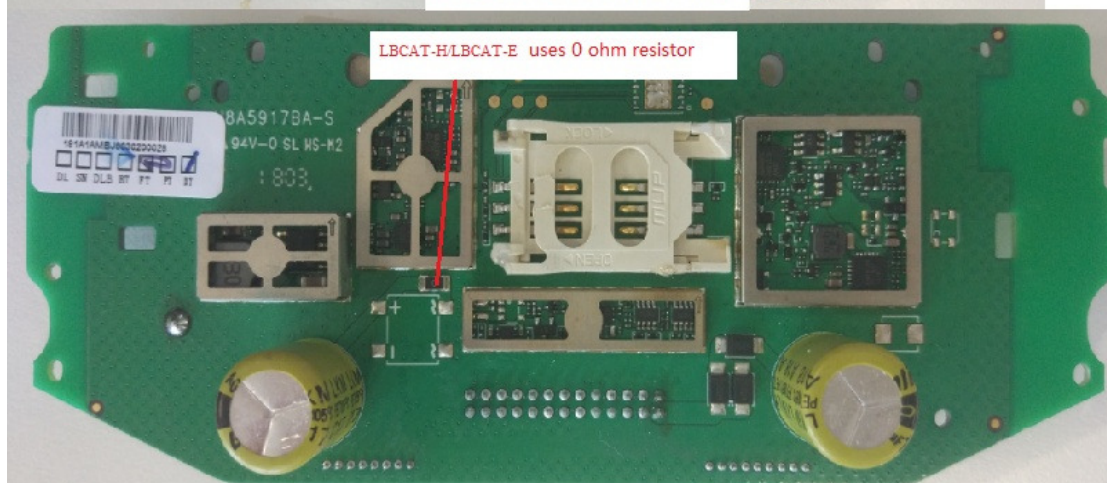
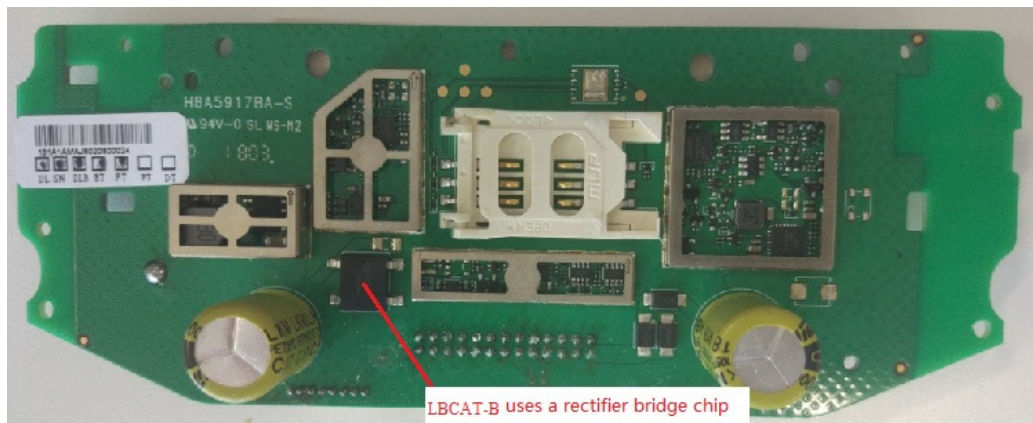
Model : LBCAT-H/LBCAT-E

---

Their difference is

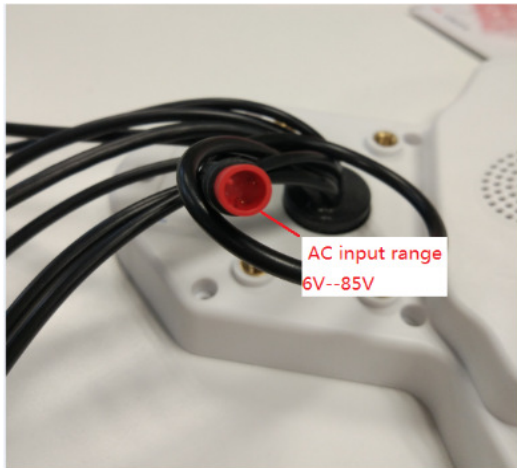
1 LBCAT-B and LBCAT-H/LBCAT-E share a mainboard PCB, achieve different functional requirements of the tow projects through bom refueling.

2 LBCAT-B and LBCAT-H/LBCAT-E difference point.

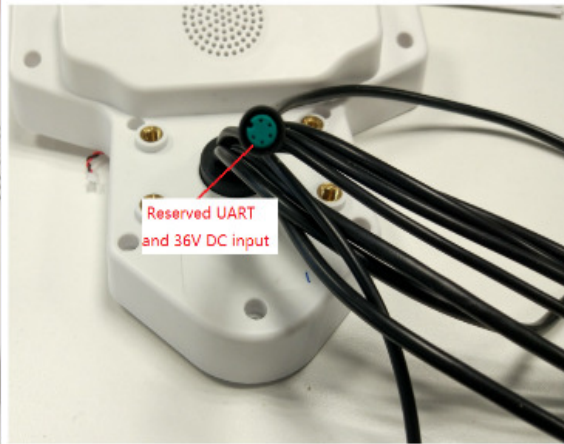


The difference between the above two differences corresponds to the whole 26PIN line as follows:

LBCAT-B



LBCAT-H/LBCAT-E



— Point of contact:

2018.05.04

(Place, date of issue)

*Weiyao Sun*

(Signature / stamp)

San Mateo

(Name and title in block letters)