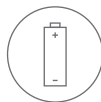
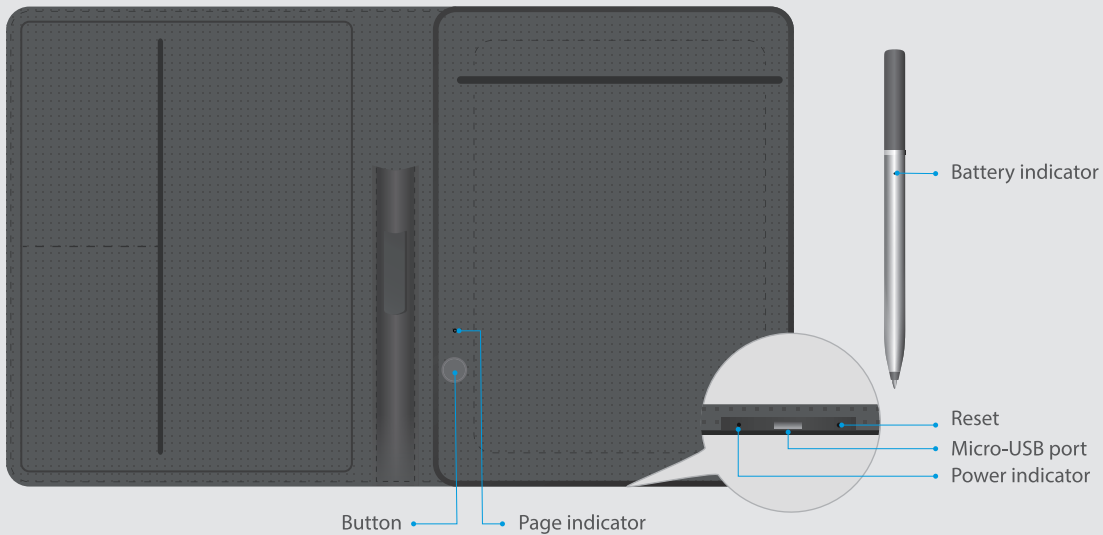


Eink

PRODUCT INTRODUCTION

Smart pad

Smart pen



Refills, Micro-USB cable, Notebook, 4A Battery

PAIRING

- 1 Scan QR code or search 'Eink' in App store to download App;

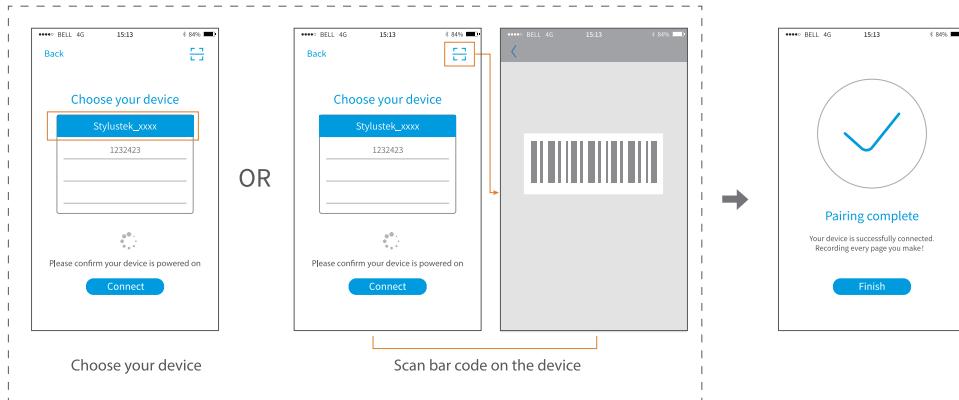


- 2 Press and hold the button for 3 seconds to start your smart pad;



Green

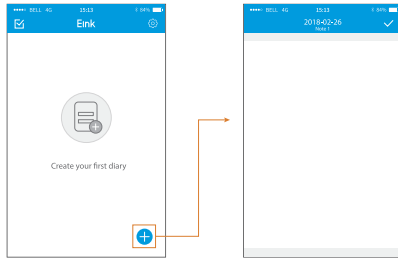
- 3 Start the Eink App and enter the pairing mode, follow the App instructions to choose your device or scan bar code on the device to pair it.



FUNCTIONS

On-line mode

- 1 Start the Eink App and pair the device;
- 2 Click on the icon '+' in the bottom right corner of the main interface;

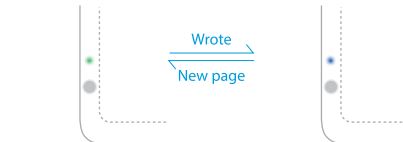


- 3 As you write on the smart pad, your handwriting will be displayed in real time on the App (if you need to create a new page, please press the button on the device).

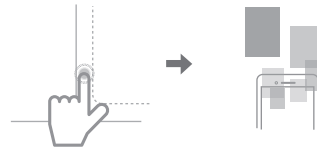


Off-line mode

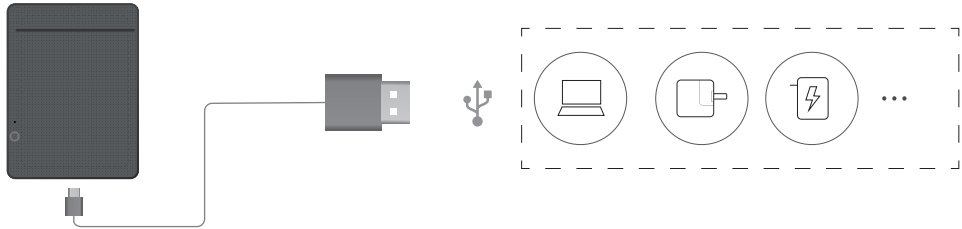
- 1 Press and hold the button for 3 seconds to start your smart pad;
- 2 Use the smart pen to write on the smart pad (the page indicator turns blue after writing);
- 3 If you need to create a new page, please press the button on the device (the page indicator will flash in blue and then turn green);



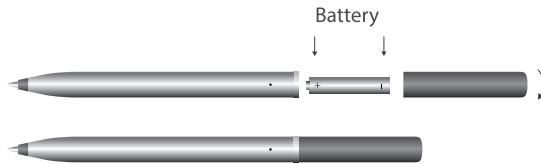
- 4 Start the Eink App and pair the device, then press the button, the stored handwriting will be transferred to the App.



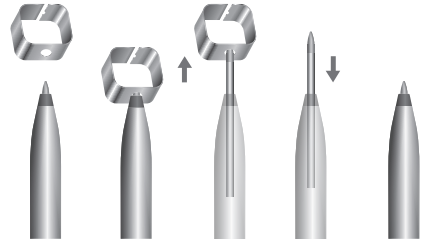
Recharging



Accessories replacement



Replace battery



Replace refill

Button

Single press Sync/Create a new page
Press and hold for 3 seconds Power on/off

Power indicator

Red Recharging

Page indicator

Green Page is blank
Blue Page has handwriting
Blue flashing Data transferring

Battery indicator

Green blinking Low battery

SPECIFICATIONS

Type	Folio	Standby time	Smart pen: 2500h Smart pad: 600h
Dimension	253*205*22mm	Continuous use time	Smart pen: 300h Smart pad: 15h
Writing area	A5	Weight	Smart pen: 25g Smart pad: 450g
Writing thickness	≤4mm	System requirement	iOS 7.0 or later/Andriod 4.0 or later
Offline storage	100 pages	Application	Eink
Pressure levels	1024	Replaceable accessories	A5 Notebook D1 Refill 4A Battery
Pen	Ball-point pen		
Port type	Micro-USB		

Cautions

- Please charge the product before use.
- Do not charge smart pad with charger higher than 5V.
- Do not disassemble the product without permissions.
- Keep smart pad & pen away from fire as they are battery-installed.
- Due to the product contains small items, adults' supervision is required. when used by children under 6 years old.

FCC Statement

This equipment has been tested and found to comply with the limits for a Class B digital device, pursuant to part 15 of the FCC rules. These limits are designed to provide reasonable protection against harmful interference in a residential installation. This equipment generates, uses and can radiate radio frequency energy and, if not installed and used in accordance with the instructions, may cause harmful interference to radio communications. However, there is no guarantee that interference will not occur in a particular installation. If this equipment does cause harmful interference to radio or television reception, which can be determined by turning the equipment off and on, the user is encouraged to try to correct the interference by one or more of the following measures:

- Reorient or relocate the receiving antenna.
- Increase the separation between the equipment and receiver.
- Connect the equipment into an outlet on a circuit different from that to which the receiver is connected.
- Consult the dealer or an experienced radio/TV technician for help.

To assure continued compliance, any changes or modifications not expressly approved by the party.

Responsible for compliance could void the user's authority to operate this equipment. (Example- use only shielded interface cables when connecting to computer or peripheral devices).

This equipment complies with Part 15 of the FCC Rules. Operation is subject to the following two conditions:

- (1) This device may not cause harmful interference, and
- (2) This device must accept any interference received, including interference that may cause undesired operation.

RF warning statement:

The device has been evaluated to meet general RF exposure requirement. The device can be used in portable exposure condition without restriction.