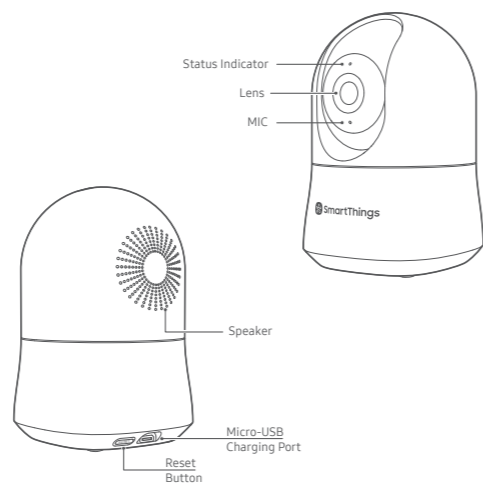
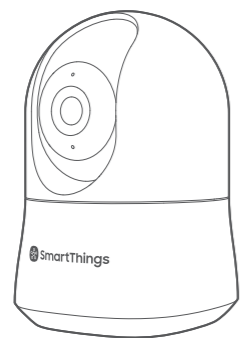
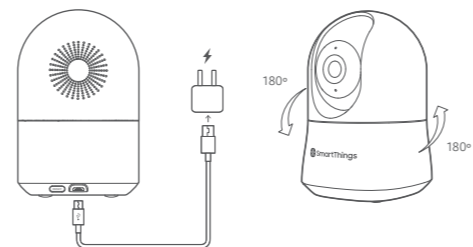


## Welcome to your SmartThings Cam 360



## Installation Guide



1. Indoor installation is recommended.
2. Avoid installing in wet or humid places.
3. Avoid installing in high temperature environments, such as near radiators, stoves or other heat sources.
4. Avoid installing on appliances that generate vibration, such as refrigerators or air conditioners.
5. Avoid installing it near devices that emit strong radio waves as this may degrade wi-fi performance.
6. This product can be placed on a flat surface, such as a desk or table.
7. This product can be mounted on a wall or ceiling with supporting installation accessories.
8. This product do not rotate head over allowed range (-180° ~ +180°).

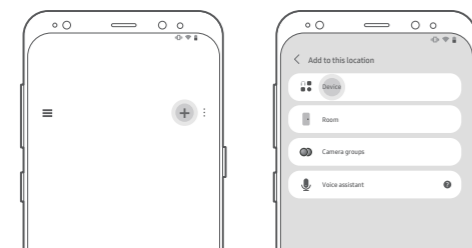
## Trouble Shooting

1. If the indicator light flashes amber, it means that the device has started up successfully. If the indicator light is not flashing amber, please reset the device.
2. In the event of app fails to operate: Please re-start the app. If this status persists, please visit [www.SmartThings.com](http://www.SmartThings.com).

LED Status Indicator	Status
No light	Power off
Blue on	Power on
Blue Slowly Blinking	Voice communication
Blue Quickly Blinking	Reset
Alternately flashes Blue and Amber	Firmware update
Amber on	Network is disconnected or firmware update fail
Amber Quickly Blinking	Ready for QR scanning
Amber Slowly Blinking	Recording

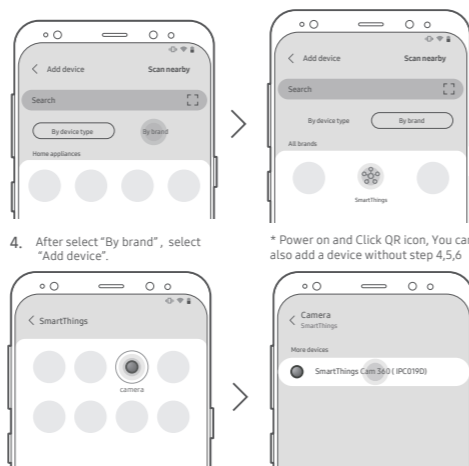


1. Connect your phone to Wi-Fi where device is used, and download SmartThings App.

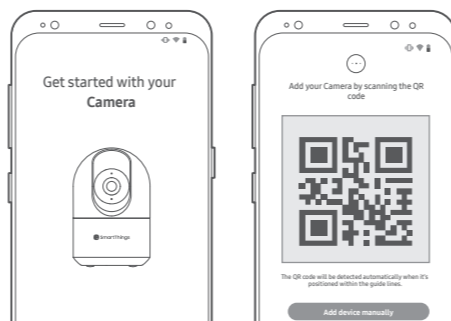


2. After login, select "+", and add device.
3. Select "Device", in the "Add to this location" tab.

SmartThings is available to download on Android devices with at least 2GB of RAM, but works best with devices running Android 5.0 or higher. For iOS devices, you'll need to be running iOS 10 or later. Check <https://itunes.apple.com/app/smartthings-samsung-connect/id1222822904?mt=8> for more details.



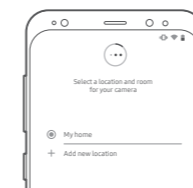
4. After select "By brand", select "Add device".
  5. After select "Camera", select "SmartThings Cam 360 (PC019D)".
- \* Power on and Click QR icon, You can also add a device without step 4,5,6



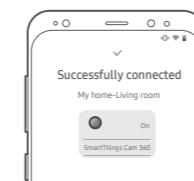
6. Plug your camera into an outlet and wait until the light starts blinking amber.
7. Add your camera by scanning the QR code



8. Make sure your phone is near your camera so they can connect.



9. Please specify the location after the connection is completed.



10. After the installation is finished, completion status is as shown in the picture.

78 mm

78 mm

### Safety Instructions

- Read, keep, and follow these instructions. Heed all warnings.
- Clean only with a dry cloth.
- Do not install near any heat sources such as radiators, heat registers, stoves, or other apparatus (including amplifiers) that produce heat.
- Only use attachments and accessories specified by the Manufacturer.
- Read our Product Usage Guidelines at: [www.SmartThings.com/Guidelines](http://www.SmartThings.com/Guidelines).

### Disclaimer

Some content and services accessible through this device belong to third parties and are protected by copyright, patent, trademark and/or other intellectual property laws. Such content and services are provided solely for your personal non-commercial use.

You may not use any content or services in a manner that has not been authorized by the content owner or service provider. Without limiting the foregoing, unless expressly authorized by the applicable content owner or service provider, you may not modify, copy, republish, upload, post, transmit, translate, sell, create derivative works, exploit, or distribute in any manner or medium any content or services displayed through this device.

### FCC Statement

**FCC** This equipment complies with FCC radiation exposure limits set forth for an uncontrolled environment. This equipment should be installed and operated with minimum distance 20cm between the radiator & your body.

This equipment has been tested and found to comply with the limits for a Class B digital device, pursuant to Part 15 of the FCC Rules. These limits are designed to provide reasonable protection against harmful interference in a residential installation. This equipment generates, uses and can radiate radio frequency energy and, if not installed and used in accordance with the instructions, may cause harmful interference to radio communications.

However, there is no guarantee that interference will not occur in a particular installation. If this equipment does cause harmful interference to radio or television reception, which can be determined by turning the equipment off and on, the user is encouraged to try to correct the interference by one or more of the following measures:

- Reorient or relocate the receiving antenna.
- Increase the separation between the equipment and receiver.
- Connect the equipment into an outlet on a circuit different from that to which the receiver is connected.
- Consult the dealer or an experienced radio/TV technician for help.

\*This product complies with part 15 of the FCC Rules. Operation is subject to the following two conditions: (1) This product may not cause harmful interference, and (2) this product must accept any interference received, including interference that may cause undesired operation.

### FCC Caution

Any changes or modifications not expressly approved by the party responsible for compliance could void the user's authority to operate this equipment.

Manufactured by Shanghai Imilab Technology co.,LTD Made in China. Room 908, No. 1, Lane 399, Shengxia Rd., China Pilot Free Trade Zone, Shanghai, China.

Frequency	
• Frequency Band(s)	
WLAN 2.4GHz:	802.11b/g/n-HT20: 2412MHz ~ 2462MHz 802.11n(HT40): 2422MHz ~ 2452MHz

(Waste Electrical & Electronic Equipment)  
(Applicable in countries with separate collection systems)

This marking on the product, accessories or literature indicates that the product, its electronic accessories (e.g. charger, headset, USB cable), and batteries should not be disposed of with other household waste.

To prevent possible harm to the environment or human health from uncontrolled waste disposal, please separate these items from other types of waste and recycle them responsibly to promote the sustainable reuse of material resources.

Household users should contact either the retailer where they purchased this product, or their local government office, for details of where and how they can take these items for environmentally safe recycling.

Business users should contact their supplier and check the terms and conditions of the purchase contract. This product and its electronic accessories should not be mixed with other commercial wastes for disposal.

EXCEPT FOR BODILY INJURY, Imilab SHALL NOT BE LIABLE FOR (I) ANY LOST PROFITS, COST OF PROCURE - MENT OF SUBSTITUTE PRODUCTS, OR ANY INCIDENTAL OR CONSEQUENTIAL DAMAGES, OR (II) ANY AMOUNTS IN EXCESS OF THE PURCHASE PRICE FOR THE PRODUCT, IN EACH CASE WHETHER RESULTING FROM THE USE OF OR INABILITY TO USE THIS PRODUCT, OR ARISING OUT OF ANY BREACH OF THIS WARRANTY, EVEN IF COMPANY HAS BEEN ADVISED OF THE POSSIBILITY OF SUCH DAMAGES. SOME STATES DO NOT ALLOW THE EXCLUSION OR LIMITATION OF INCIDENTAL OR CONSEQUENTIAL DAMAGES, SO THE ABOVE LIMITATION AND EXCLUSIONS MAY NOT

TO THE EXTENT PERMITTED BY APPLICABLE LAW, Imilab DISCLAIMS ANY AND ALL STATUTORY OR IMPLIED WARRANTIES, INCLUDING WITHOUT LIMITATION, WARRANTIES OF MERCHANTABILITY, FITNESS FOR A PARTICULAR PURPOSE AND WARRANTIES AGAINST HIDDEN OR LATENT DEFECTS. IF Imilab CANNOT LAWFULLY DISCLAIM STATUTORY OR IMPLIED WARRANTIES, THEN TO THE EXTENT PERMITTED BY LAW, ALL SUCH WARRANTIES SHALL BE LIMITED IN DURATION TO THE WARRANTY PERIOD. SOME STATES DO NOT ALLOW LIMITATIONS ON HOW LONG AN IMPLIED WARRANTY LASTS, SO THE ABOVE LIMITATIONS MAY NOT APPLY TO YOU.

### Warranty & Important Legal Information.

SmartThings warrants this product (the "Product") against defects in materials and/or workmanship under normal use for a period of ONE (1)YEAR from the date of purchase by the original purchaser ("Warranty Period").

Obtaining Service - Please contact the retail location where you purchased this product or call SmartThings Customer Care at 1-800-726-7864, and ask for "SmartThings warranty service."

Arbitration Agreement. This Product is subject to a binding rbitration agreement between you and SmartThings.

You can opt out of the agreement within 30 calendar days of the first consumer purchase by emailing optout@sea.samsung.com or calling 1-800-SAMSUNG (726-7864) and providing the applicable information.

The full Arbitration Agreement and One-year Limited Warranty are available online: [www.smartthings.com/warranty](http://www.smartthings.com/warranty).

### Important Legal Information

#### READ THIS INFORMATION BEFORE USING YOUR PRODUCT.

#### Imilab Limited Warranty

This Product is covered under the applicable Imilab Limited Warranty **INCLUDING ITS DISPUTE RESOLUTION PROCEDURE** and your right to opt out of arbitration within 30 calendar days of the 1st consumer purchase. You may opt out by either sending an email to optout@sea.samsung.com with the subject line "Imilab Arbitration Opt-Out" or by calling 1-800-726-7864.

For more detailed procedures, please refer to the "Dispute Resolution Procedures and Arbitration and Opt-Out" section of the Limited Warranty.

#### Standard Limited Warranty Information

#### Procedures for Dispute Resolution/30-day Arbitration and Opt-Out Policy

ALL DISPUTES WITH IMILAB ARISING IN ANY WAY FROM THIS LIMITED WARRANTY OR THE SALE, CONDITION OR PERFORMANCE OF THE PRODUCTS SHALL BE RESOLVED EXCLUSIVELY THROUGH FINAL AND BINDING ARBITRATION, AND NOT BY A COURT OR JURY. ANY SUCH DISPUTE SHALL NOT BE COMBINED OR CONSOLIDATED WITH A DISPUTE INVOLVING ANY OTHER PERSON'S OR ENTITY'S PRODUCT OR CLAIM, AND SPECIFICALLY, WITHOUT LIMITATION OF THE FOREGOING, SHALL NOT UNDER ANY CIRCUMSTANCES PROCEED AS PART OF A CLASS ACTION. THE ARBITRATION SHALL BE CONDUCTED BEFORE A SINGLE ARBITRATOR, WHOSE AWARD MAY NOT EXCEED, IN FORM OR AMOUNT, THE RELIEF ALLOWED BY THE APPLICABLE LAW. The arbitration shall be conducted according to the China International Economic and Trade Arbitration Commission (CIETAC) Rules applicable to consumer disputes. The CIETAC Rules are available online at [www.cietac.org.cn](http://www.cietac.org.cn). The laws of PRC, without reference to its choice of laws principles, shall govern the interpretation of the Limited Warranty and all disputes that are subject to this arbitration provision. The arbitrator shall decide all issues of interpretation and application of this arbitration provision and the Limited Warranty.

For any arbitration in which your total damage claims, exclusive of attorney fees and expert witness fees, are \$5,000.00 or less ("Small Claim"), the arbitrator may, if you prevail, award your reasonable attorney fees, expert witness fees and costs as part of any award, but may not grant Imilab's attorney fees, expert witness fees or costs unless it is determined that the claim was brought in bad faith. In a Small Claim case, you shall be required to pay no more than half of the total administrative, facility and arbitrator fees, or \$50.00 of such fees, whichever is less, and Imilab shall pay the remainder of such fees. Administrative, facility and arbitrator fees for arbitrations in which your total damage claims, exclusive of attorney fees and expert witness fees, exceed \$5,000.00 ("Large Claim") shall be determined according to CIETAC rules. In a Large Claim case, the arbitrator may grant to the prevailing party, or apportion among the parties, reasonable attorney fees, expert witness fees and costs. Judgment may be entered on the arbitrator's award in any court of competent jurisdiction. THIS ARBITRATION PROVISION ALSO APPLIES TO CLAIMS AGAINST THE EMPLOYEES, REPRESENTATIVES AND AFFILIATES OF IMILAB AND SAMSUNG ELECTRONICS AMERICA, INC., IF ANY SUCH CLAIM ARISES FROM THE PRODUCTS SALE, CONDITION OR PERFORMANCE.

You may opt out of this dispute resolution procedure by providing notice to Imilab no later than 30 calendar days from the date of the rst consumer purchaser's purchase of the Product. To opt out, you must send notice by e-mail to optout@sea.samsung.com, with the subject line "Imilab Arbitration Opt Out." You must include in the opt out e-mail: (i) your name and address; (ii) the date on which the Product was purchased; (iii) the Product model name or model number; and (iv) the IMEI or MED ID or Serial Number, as applicable. If you have it, the IMEI or MED ID or Serial Number can be found (i) on the Product box; (ii) on the Product information screen, which can be found under "Settings;" (iii) on a label on the back of the Product beneath the battery, if the battery is removable; and (iv) on the outside of the Product if the battery is not removable. Alternatively, you may opt out by calling 1-800-726-7864 no later than 30 calendar days from the date of the rst consumer purchaser's purchase of the Product and providing the same information. These are the only two forms of notice that will be effective to opt out of this dispute resolution procedure. Opting out of this dispute resolution procedure will not affect the coverage of the Limited Warranty in any way, and you will continue to enjoy the benefits of the Limited Warranty.

### Severability

If any portion of this Limited Warranty is held to be illegal or unenforceable, such partial illegality or unenforceability shall not affect the enforceability of the remainder of the Limited Warranty.

### Terms & Conditions of Sale and Standard Limited Warranty

#### What is covered and for how long?

The warranty period commences upon the date of purchase by the first consumer purchaser and continuing for the following specified period of time after that date:

Device	1 Year
Other Accessories*	1 Year

\*If applicable.

#### What is not covered?

This Limited Warranty is conditioned upon proper use of the Product.

This Limited Warranty does not cover: (a) defects or damage resulting from accident, misuse, abnormal use, abnormal conditions, improper storage, exposure to liquid, moisture, dampness, sand or dirt, neglect, or unusual physical, electrical or electromechanical stress; (b) scratches, dents and cosmetic damage, unless caused by Imilab; (c) defects or damage resulting from excessive force or use of a metallic object when pressing on a touch screen; (d) equipment that has the serial number or the enhancement data code removed, defaced, damaged, altered or made illegible; (e) ordinary wear and tear; (f) defects or damage resulting from the use of Product in conjunction or connection with accessories, products, or ancillary/peripheral equipment not furnished or approved by Imilab; (g) defects or damage resulting from improper testing, operation, maintenance, installation, service, or adjustment not furnished or approved by Imilab, including but not limited to installation of unauthorized software and unauthorized root access, both of which shall void this limited warranty; (h) defects or damage resulting from external causes such as collision with an object, fire, flooding, dirt, windstorm, lightning, earthquake, exposure to weather conditions, theft, blown fuse, or improper use of any electrical source; (i) defects or damage resulting from cellular signal reception or transmission, or viruses or other software problems introduced into the Product; or (j) Product used or purchased outside the United States. This Limited Warranty covers batteries only if battery capacity falls below 80% of rated capacity or the battery leaks, and this Limited Warranty does not cover any battery if (i) the battery has been charged by a battery charger not speci ed or approved by Imilab for charging the battery; (ii) any of the seals on the battery are broken or show evidence of tampering; or (iii) the battery has been used in equipment other than the Imilab device for which it is specified.

#### What are Imilab's obligations?

During the applicable warranty period, provided the Product is returned in accordance with the terms of this Limited Warranty, Imilab will repair or replace the Product, at Imilab's sole option, without charge. Imilab may, at Imilab's sole option, use rebuilt, reconditioned, or new parts or components when repairing any Product, or may replace the Product with a rebuilt, reconditioned or new Product. Repaired/replaced cases, pouches and holders will be warranted for a period of ninety (90) days. All other repaired/replaced Products will be warranted for a period equal to the remainder of the original Limited Warranty on the original Product or for ninety (90) days, whichever is longer. All replaced Products, parts, components, boards and equipment shall become the property of Imilab. Except to any extent expressly allowed by applicable law, transfer or assignment of this Limited Warranty is prohibited.

#### What must you do to obtain warranty service?

To obtain service under this Limited Warranty, you must return the Product to an authorized service facility in an adequate container for shipping, accompanied by the sales receipt or comparable proof of sale showing the original date of purchase by the rst consumer purchaser, the serial number of the Product and the seller's name and address.

All SmartThing products sold by Samsung in the U.S. should be covered by the same warranty, as shown at <https://www.smartthings.com/warranty>, regardless of the original manufacturer. This warranty provides protections that comport with U.S. law, especially regarding arbitration and opt-out provisions that are critical to reduce the risk of expensive class-action lawsuits in the U.S.

To obtain assistance on where to deliver the Product, please contact Imilab Customer Care at help@imilab.com, and ask for "Imilab warranty service." If Imilab determines that any Product is not covered by this Limited Warranty, you must pay all parts, shipping, and labor charges for the repair or return of such Product.

You should keep a separate backup copy of the settings or any contents of the Product before delivering the Product to Imilab for warranty service, as some or all of the settings or contents may be deleted or reformatted during the course of warranty service.

#### What are the limits on Imilab's liability?

THIS LIMITED WARRANTY SETS OUT THE FULL EXTENT OF IMILAB'S RESPONSIBILITIES, AND THE EXCLUSIVE REMEDY REGARDING THE PRODUCTS.

ALL IMPLIED WARRANTIES, INCLUDING WITHOUT LIMITATION, IMPLIED WARRANTIES OF MERCHANTABILITY AND FITNESS FOR A PARTICULAR PURPOSE, ARE LIMITED TO THE DURATION OF THIS LIMITED WARRANTY. IN NO EVENT SHALL IMILAB BE LIABLE FOR DAMAGES IN EXCESS OF THE PURCHASE PRICE OF THE PRODUCT OR FOR, WITHOUT LIMITATION, COMMERCIAL LOSS OF ANY SORT; LOSS OF USE, TIME, DATA, REPUTATION, OPPORTUNITY, GOODWILL, PROFITS OR SAVINGS; INCONVENIENCE, INCIDENTAL, SPECIAL, CONSEQUENTIAL OR PUNITIVE DAMAGES; OR DAMAGES ARISING FROM THE USE OR INABILITY TO USE THE PRODUCT. SOME STATES AND JURISDICTIONS DO NOT ALLOW LIMITATIONS ON HOW LONG AN IMPLIED WARRANTY LASTS, OR THE DISCLAIMER OR LIMITATION OF INCIDENTAL OR CONSEQUENTIAL DAMAGES, SO THE ABOVE LIMITATIONS AND DISCLAIMERS MAY NOT APPLY TO YOU.

Imilab MAKES NO WARRANTIES OR REPRESENTATIONS, EXPRESS OR IMPLIED, STATUTORY OR OTHERWISE, AS TO THE QUALITY, CAPABILITIES, OPERATIONS, PERFORMANCE OR SUITABILITY OF ANY THIRD-PARTY SOFTWARE OR EQUIPMENT USED IN CONJUNCTION WITH THE PRODUCT, OR THE ABILITY TO INTEGRATE ANY SUCH SOFTWARE OR EQUIPMENT WITH THE PRODUCT, WHETHER SUCH THIRD-PARTY SOFTWARE OR EQUIPMENT IS INCLUDED WITH THE PRODUCT, DISTRIBUTED BY Imilab OR OTHERWISE. RESPONSIBILITY FOR THE QUALITY, CAPABILITIES, OPERATIONS, PERFORMANCE AND SUITABILITY OF ANY SUCH THIRD-PARTY SOFTWARE OR EQUIPMENT RESTS SOLELY WITH THE USER AND THE DIRECT VENDOR, OWNER OR SUPPLIER OF SUCH THIRD-PARTY SOFTWARE OR EQUIPMENT. Nothing in the Product instructions or information shall be construed to create an express warranty of any kind with respect to the Products. No agent, employee, dealer, representative or reseller is authorized to modify or extend this Limited Warranty or to make binding representations or claims, whether in advertising, presentations or otherwise, on behalf of Imilab regarding the Products or this Limited Warranty.

This Limited Warranty gives you specific legal rights, and you may also have other rights that vary from state to state.

**IMPORTANT!** PLEASE BE READY TO PROVIDE WARRANTY INFORMATION (PROOF OF PURCHASE) TO Imilab's CUSTOMER CARE CENTER IN ORDER TO OBTAIN THIS SERVICE AT NO CHARGE. IF THE WARRANTY HAS EXPIRED, DOES NOT COVER THE DAMAGE TO THE DEVICE, OR YOU CANNOT PROVIDE PROOF OF PURCHASE, CHARGES MAY APPLY.

Use only Samsung-approved chargers, batteries, and cables. Unapproved chargers or cables can cause the battery to explode or damage the device. Connecting the charger improperly may cause serious damage to the device. Any damage caused by misuse is not covered by the warranty.

Camera Operating temperature : 14°F ~ 122°F (-10°C ~ 50°C)

