



拓频物联

KW232天线测试报告

KW232 Antenna test report

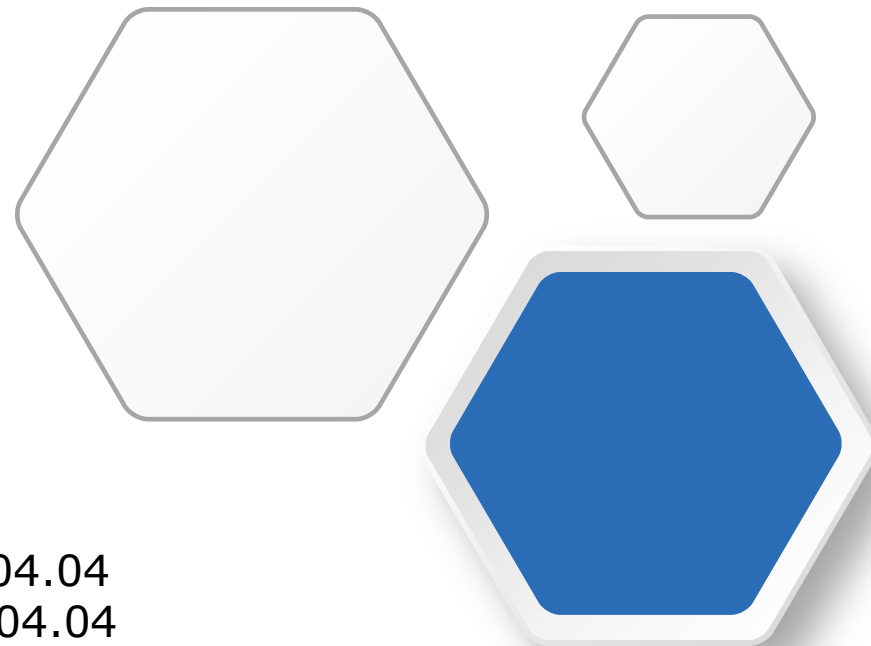


射频:李工

Radio frequency: Mr. Li

时间:2023.04.04

Date:2023.04.04





目录 CONTENTS

01

基础信息Basic information

测试设备Test equipment
整机资料Complete machine data
天线匹配Antenna matching

02

测试数据Test data

无源/有源测试数据 Passive/active test data
天线装配图示 Antenna assembly diagram
环境处理图 Environmental treatment diagram

03

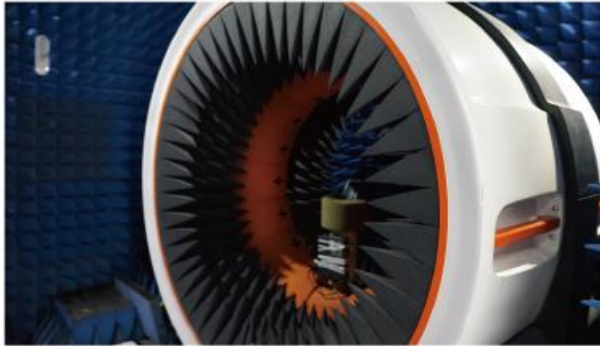
规划总结Planning summary

项目概述Project overview

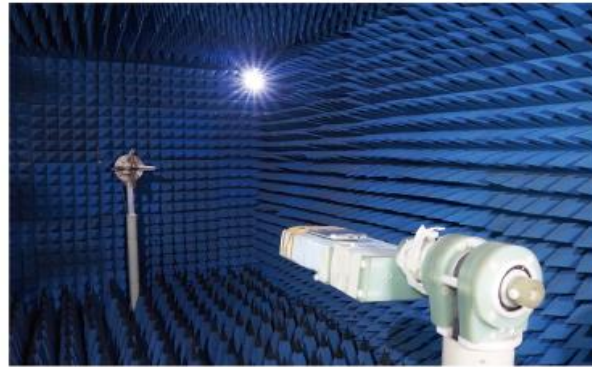
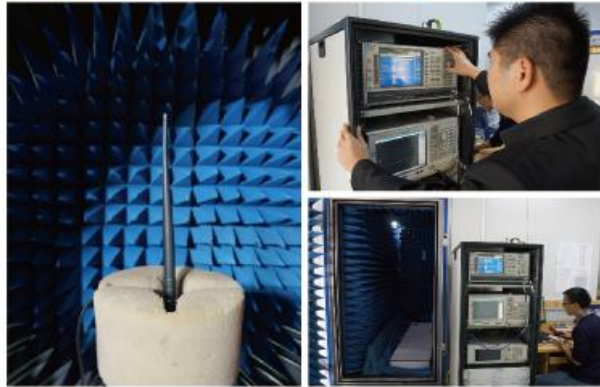


测试系统 Test system

【SATIMO】



【广屏】



➤ SATIMO Darkroom:
Anristu MT8820C/ Agilent E5071C
StarPointSP9500

➤ ETS Darkroom:
CMW500/Agilent 8960

➤ Network Analyzer:
Agilent E5071C

Antenna type:integral Antenna



整机资料 machine data

- 客户名称: 琦沃智能
Customer name: King-wear
- 项目名称: KW232
Project name: KW232
- 频段信息: BT
Frequency band information: BT
- Antenna type: Monopole Antenna



测试数据: Test data

BT天线无源图 - (SWR/Log Mag /Smith)

BT Passive antenna diagram- (SWR/Log Mag /Smith)



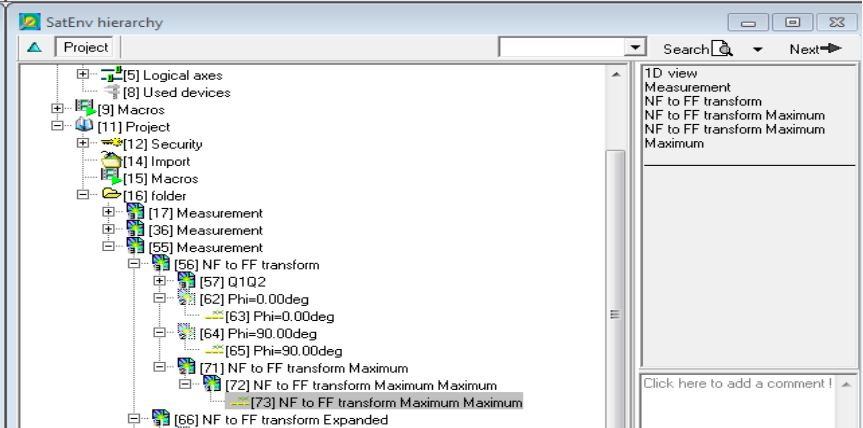
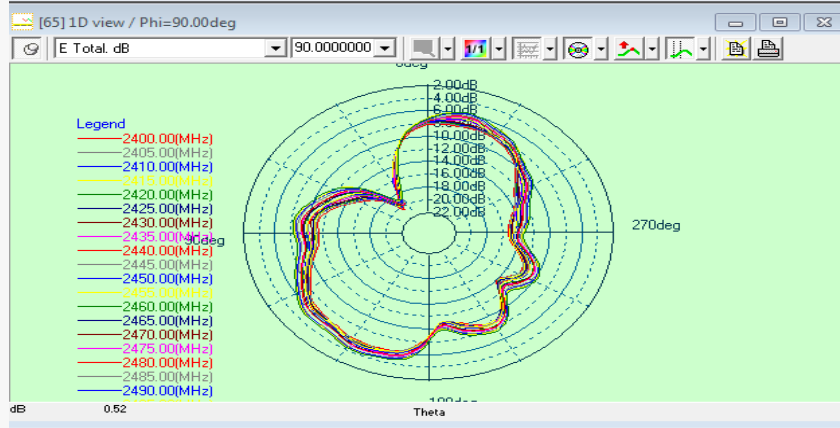
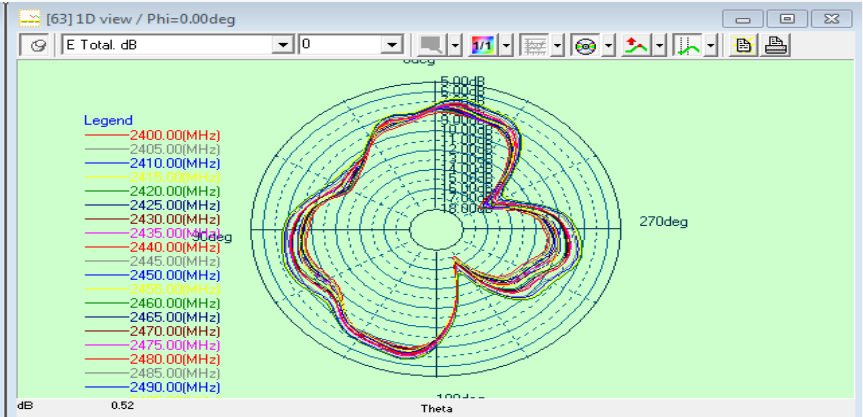
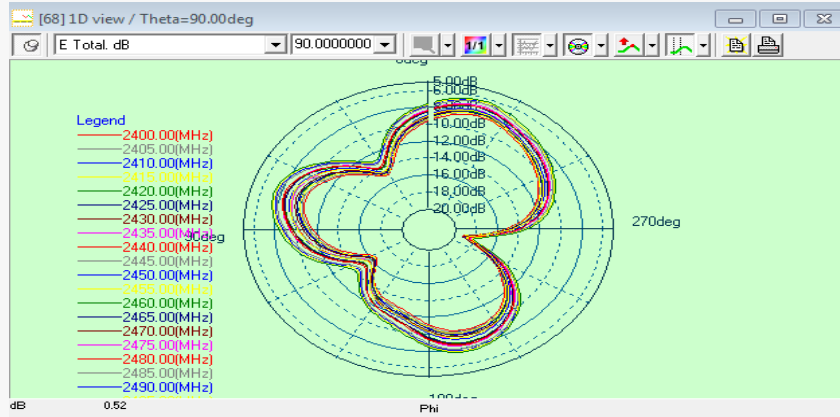


测试数据: test data

BT天线无源数据- (效率/增益/方向图)

BT Passive antenna diagram-(Efficiency/Gain/ Direction chart)

2400-2500MHZ Efficiency		
Frequency	Efficiency	Gain. dBi
2400MHz	4%	-7.62
2410MHz	4%	-7.48
2420MHz	4%	-7.32
2430MHz	4%	-7.42
2440MHz	4%	-7.28
2450MHz	4%	-7.31
2460MHz	5%	-7.16
2470MHz	5%	-7.02
2480MHz	5%	-6.98
2490MHz	5%	-7.12
2500MHz	5%	-6.97

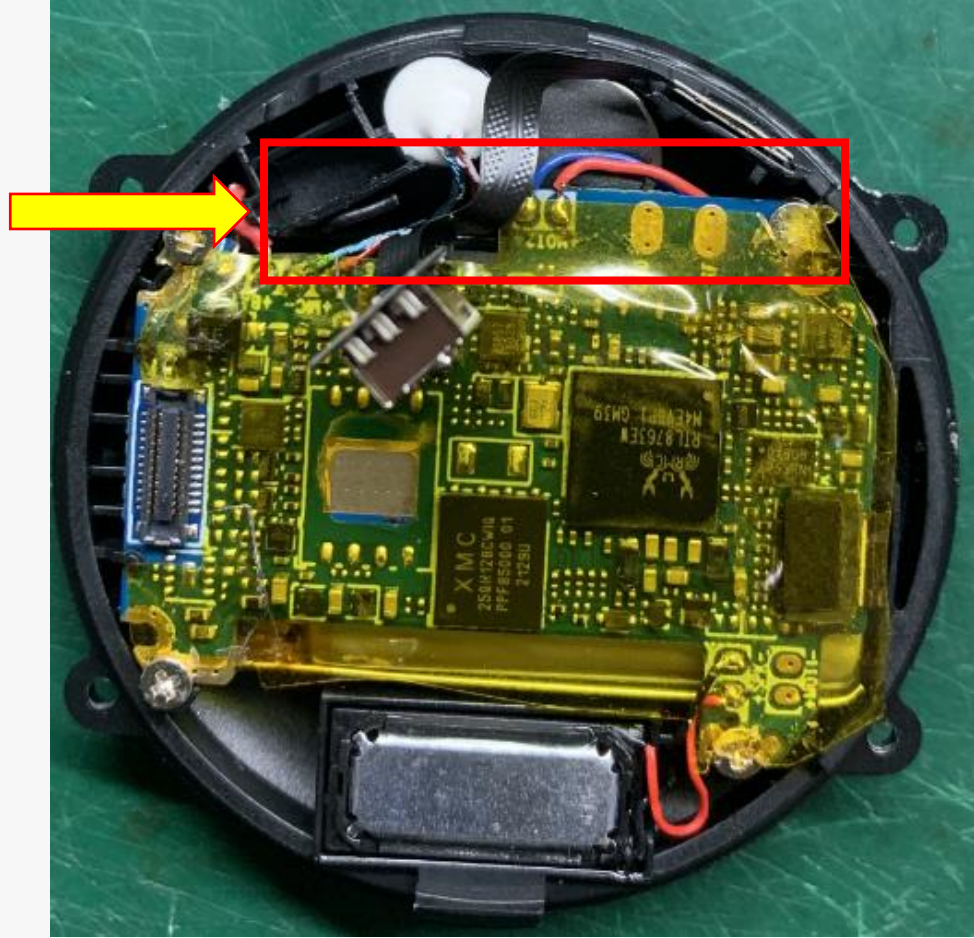




天线位置

Antenna position

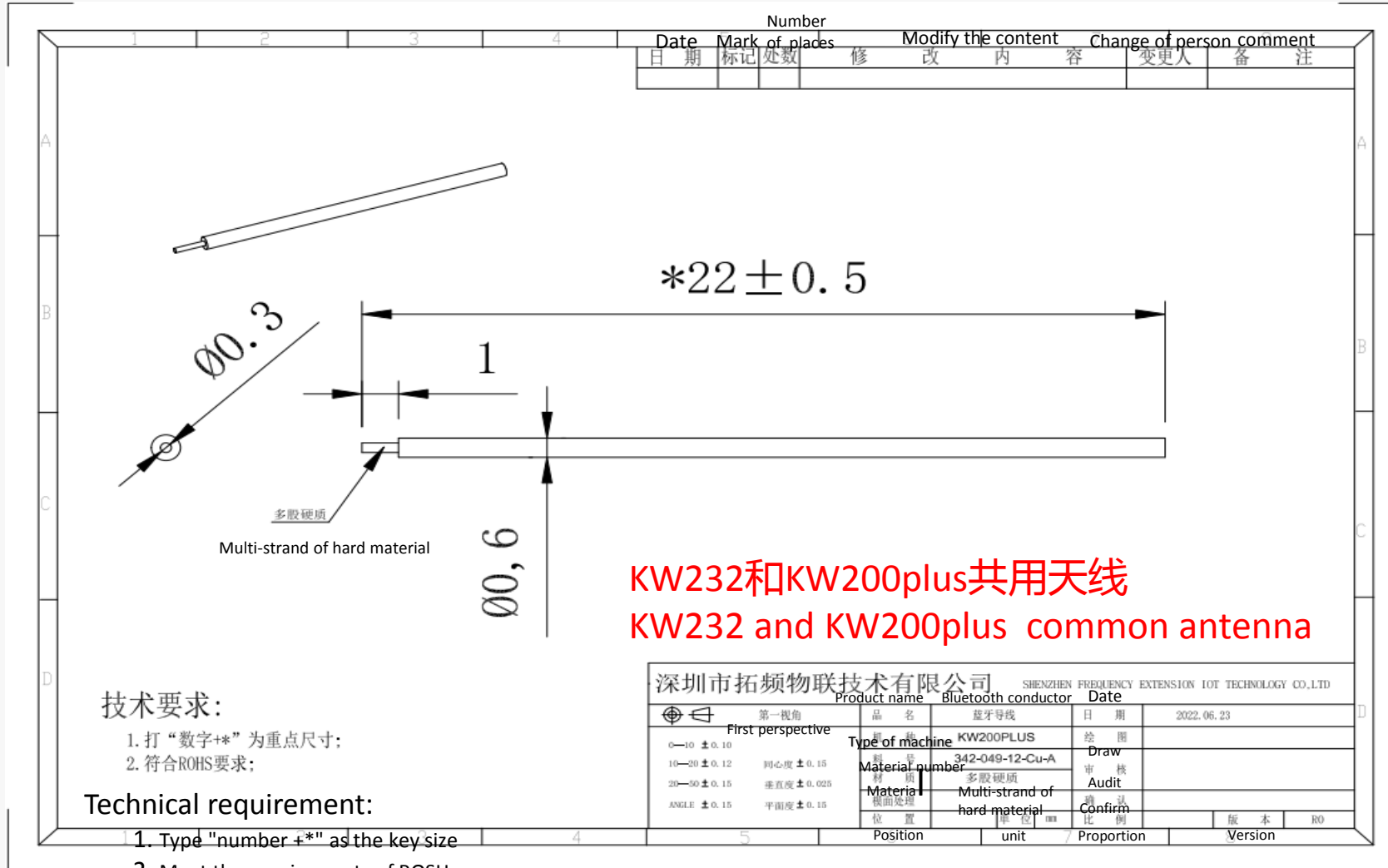
天线位置
Antenna position





天线尺寸

Antenna Dimensions



KW232和KW200plus共用天线
KW232 and KW200plus common antenna



规划总结

Planning to summarize

0

0

以上报告为KW232客供机器，无源测试报告。

The above report is the KW232 customer machine, passive test report.

THANK YOU

