



Antenna Design & Data Report

Customer Name: KINGWEAR

Project Name: KW209

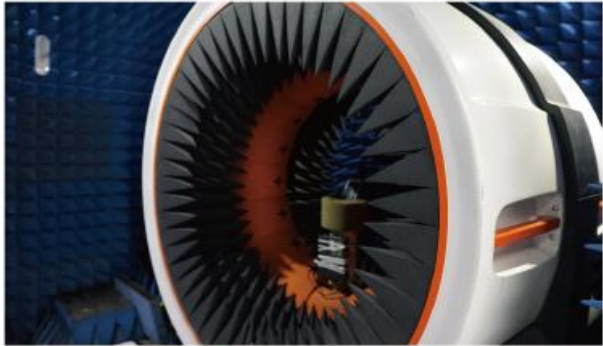
Frequency Band Required: BT

Engineer: ZongYu Yang

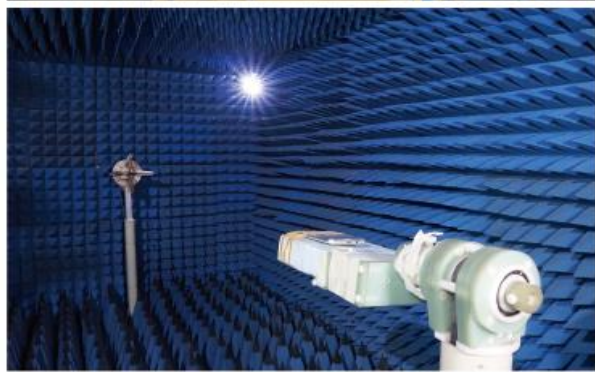
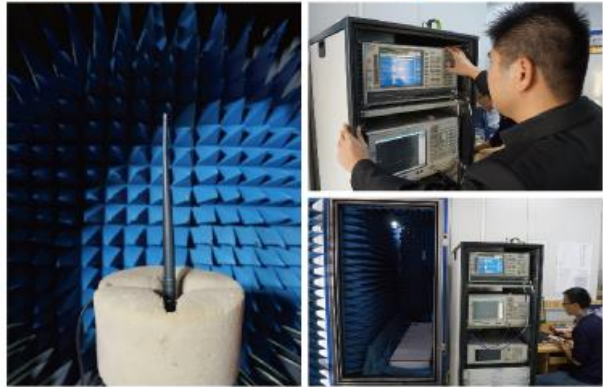
Finish Date: 17th Sep. 2022



【SATIMO】



【广屏】



Test System/Equipment

- SATIMO Darkroom:
Anritsu MT8820C /Agilent
E5071C/StarPoint SP9500
- ETS Darkroom:
CMW500/Agilent 8960
- Network Analyzer:
Agilent E5071C

Antenna type:integral Antenna



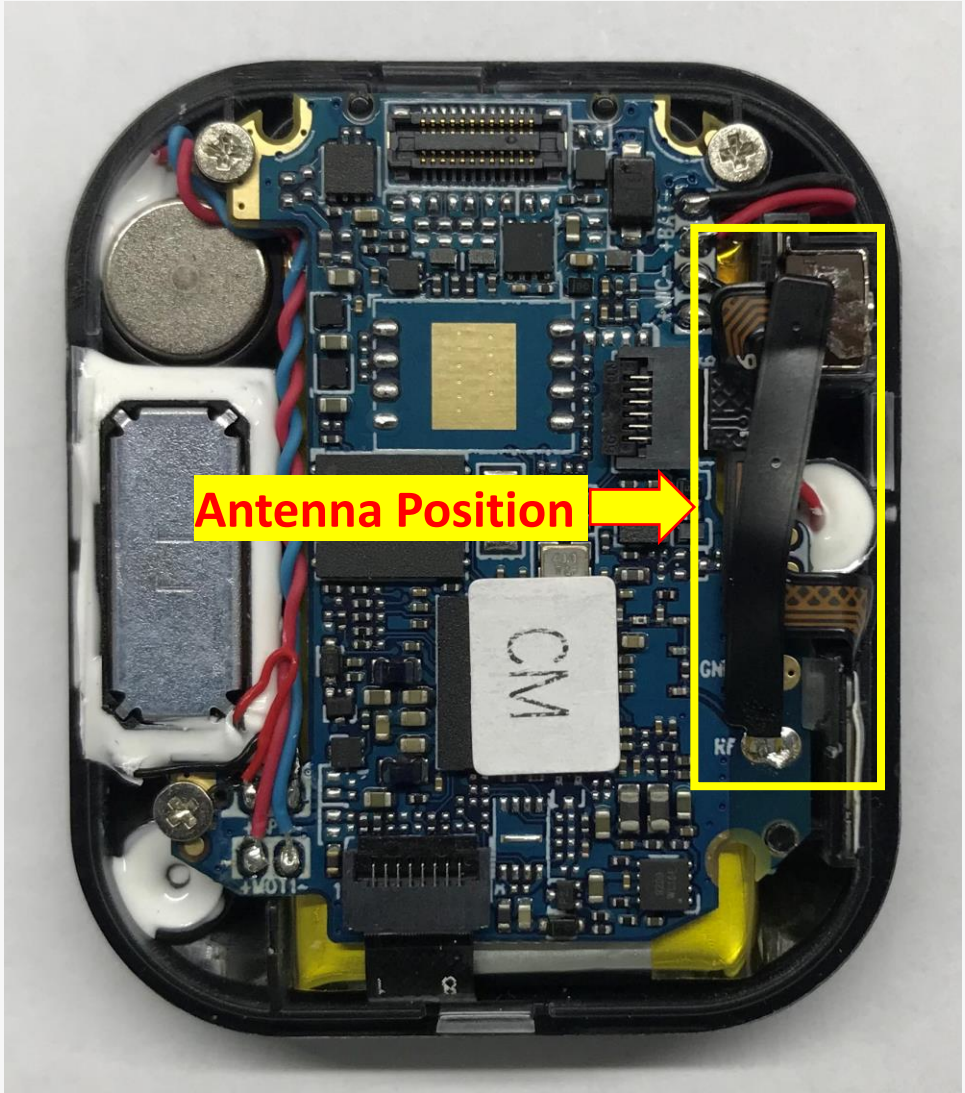
项目图片
Project Image

KW209





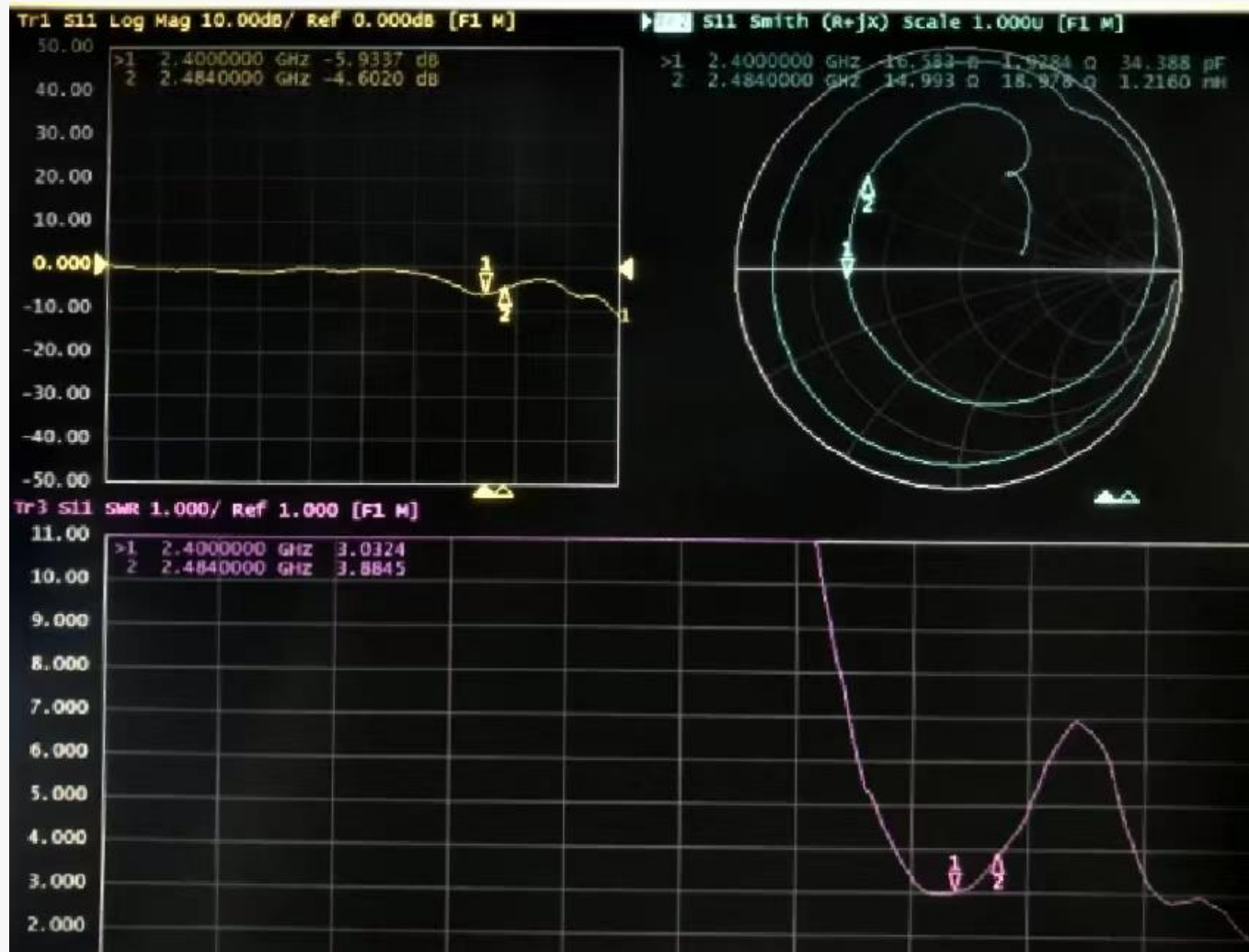
天线位置
Antenna Position





天线 无源数据 (回损/史密斯/驻波图)

Antenna Passive Data: Return Loss, Smith Chart, Stationary Wave Pattern

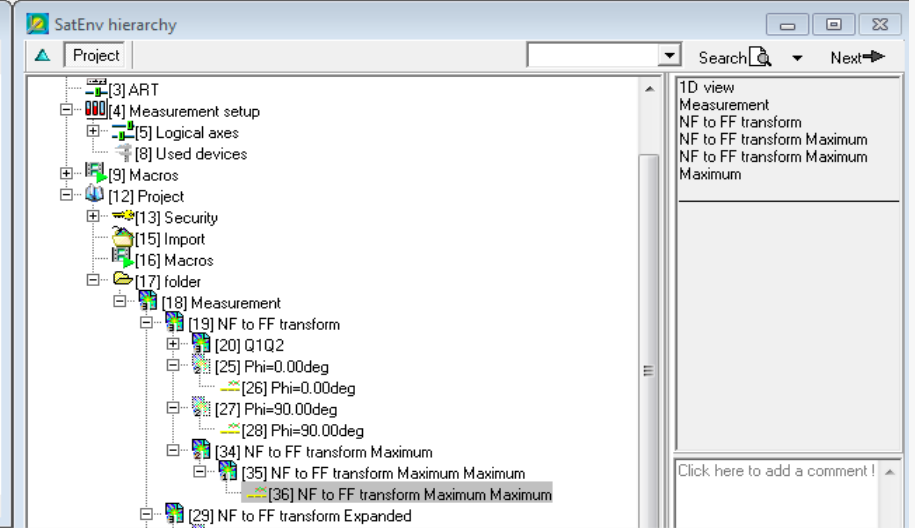
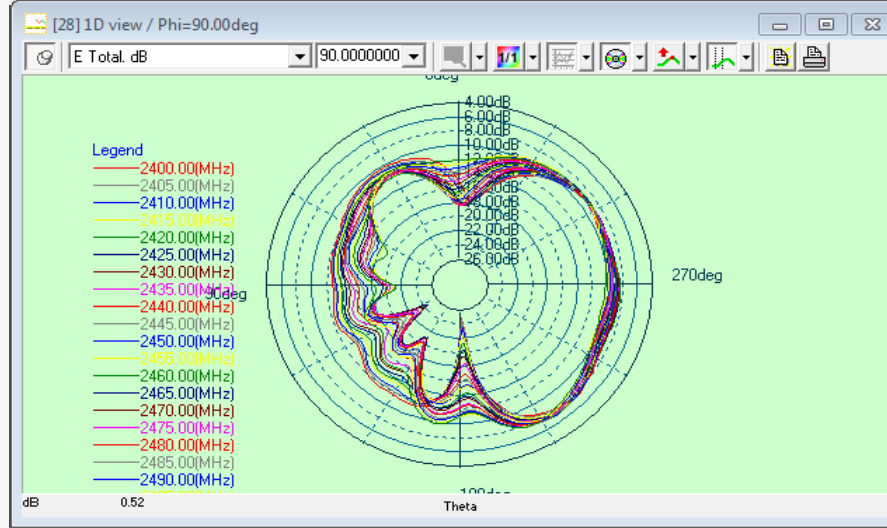
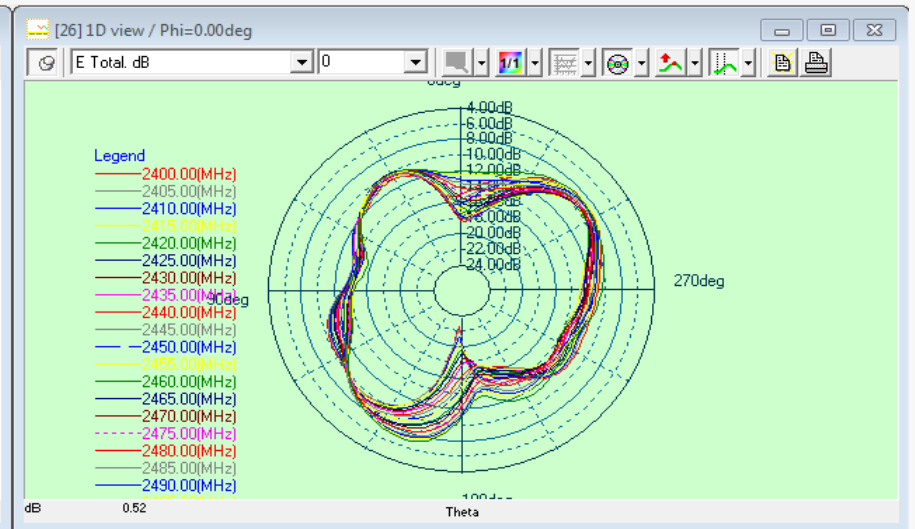
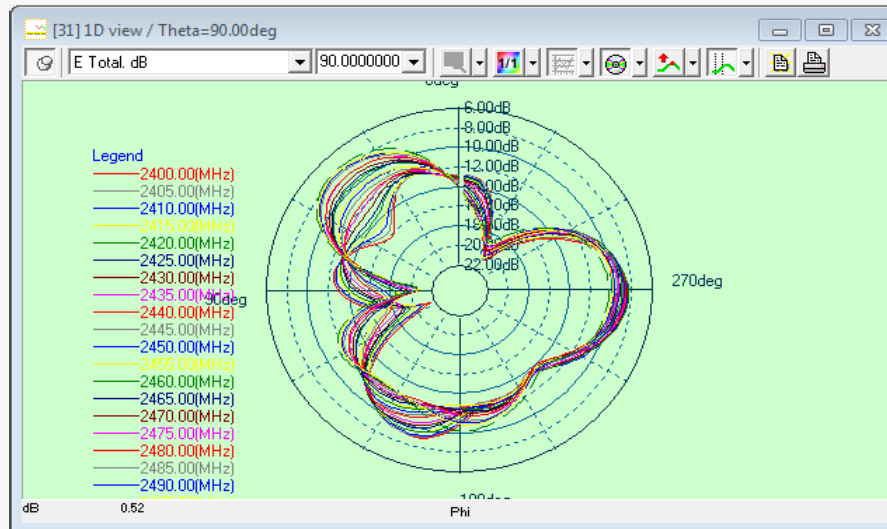




天线 无源数据 (效率/增益/方向图)

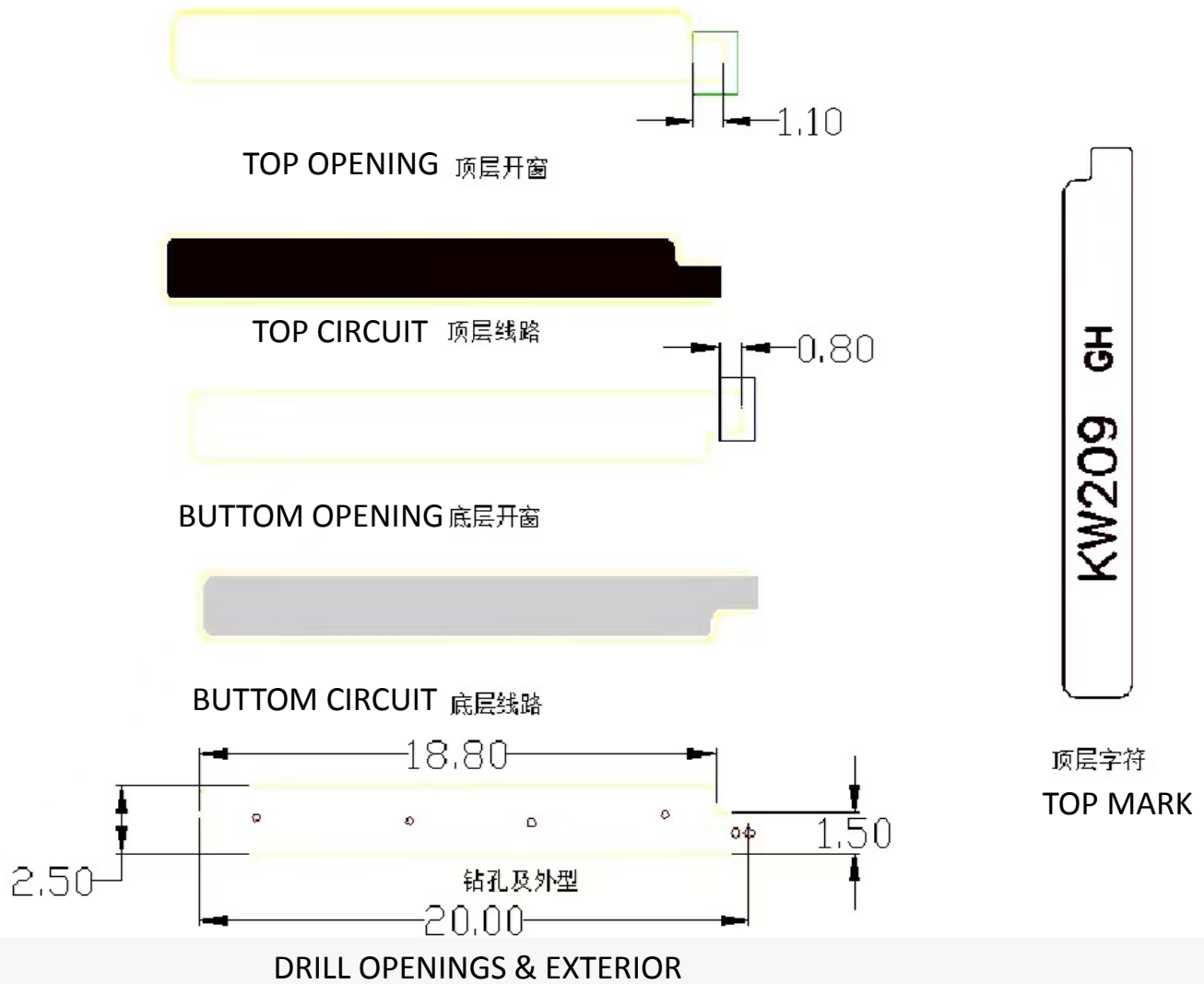
Antenna Passive Data: Efficiency, Gain, Radiation Pattern

Frequency	Efficiency	Gain . dBi
2400MHz	4%	-8.24
2405MHz	4%	-8.25
2410MHz	4%	-8.12
2415MHz	4%	-9.15
2420MHz	4%	-9.95
2425MHz	4%	-8.03
2430MHz	4%	-8.94
2435MHz	5%	-8.04
2440MHz	5%	-8.96
2445MHz	4%	-9.11
2450MHz	5%	-9.92
2455MHz	5%	-9.16
2460MHz	4%	-8.95
2465MHz	5%	-8.07
2470MHz	5%	-8.09
2475MHz	5%	-8.06
2480MHz	5%	-8.32
2485MHz	4%	-9.10
2490MHz	5%	-9.28
2495MHz	4%	-8.37
2500MHz	4%	-8.41





天线尺寸
Antenna
Dimensions





THANK YOU

May you find peacefulness in your heart
in the busy and bustling world

—TOP FREQUENCY IOT

