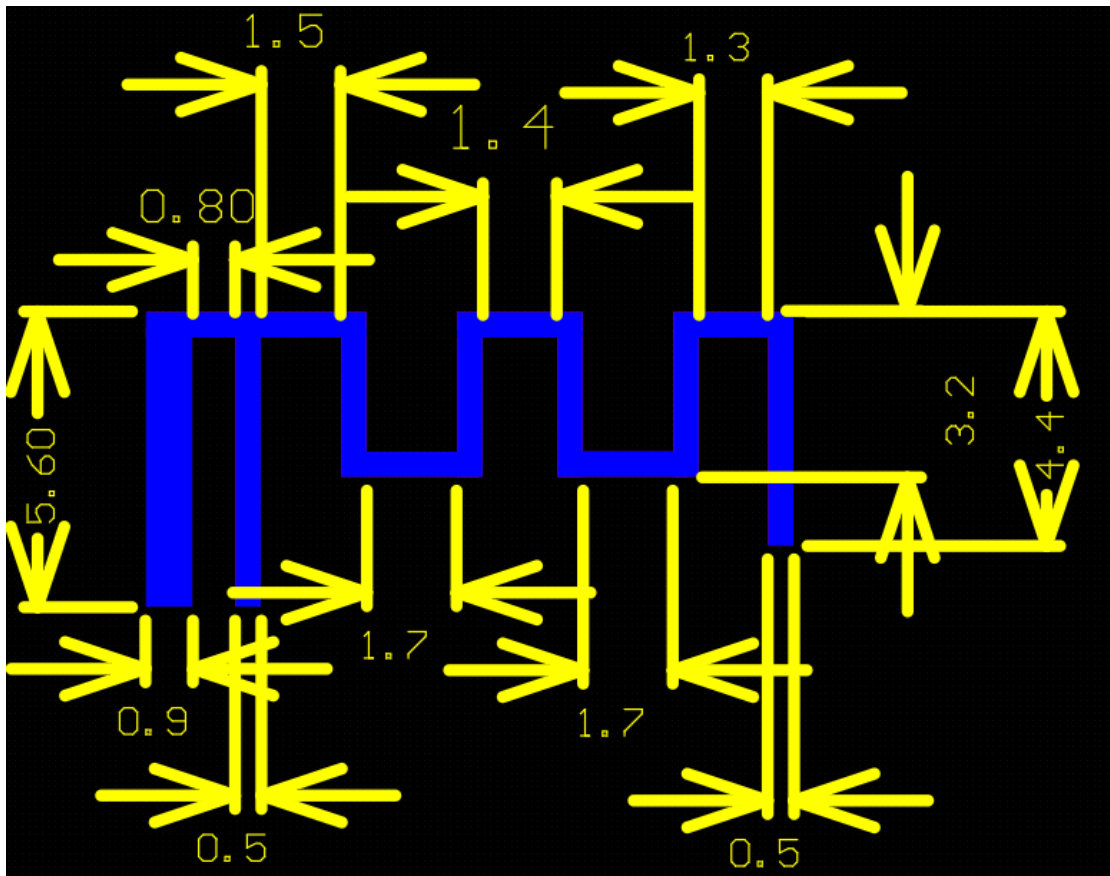
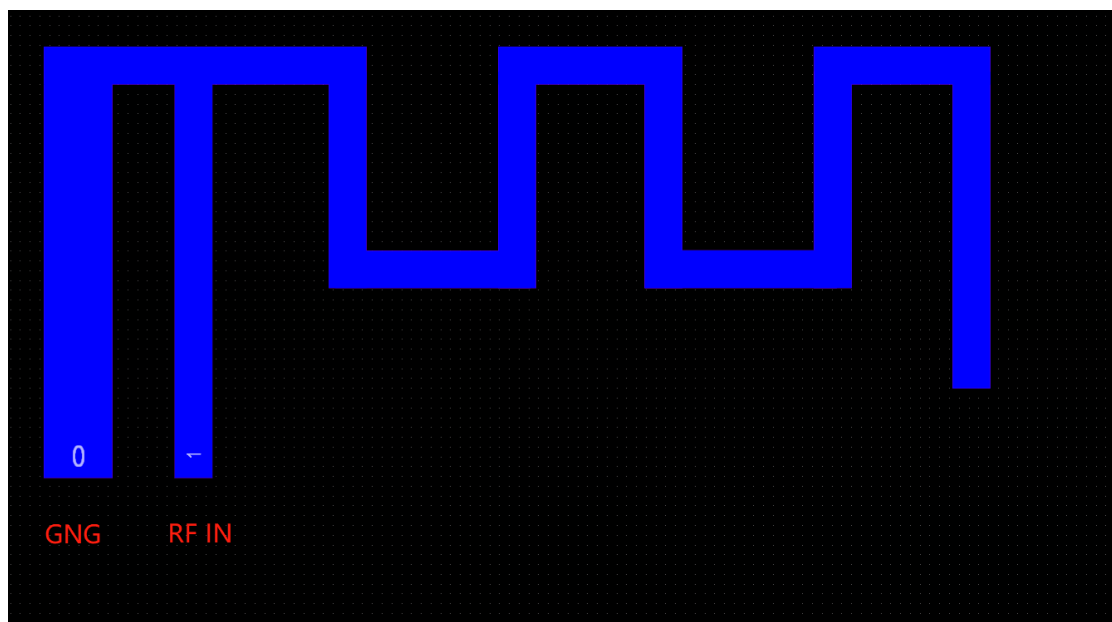


Antenna introduction



The above image shows the antenna dimensions in MM



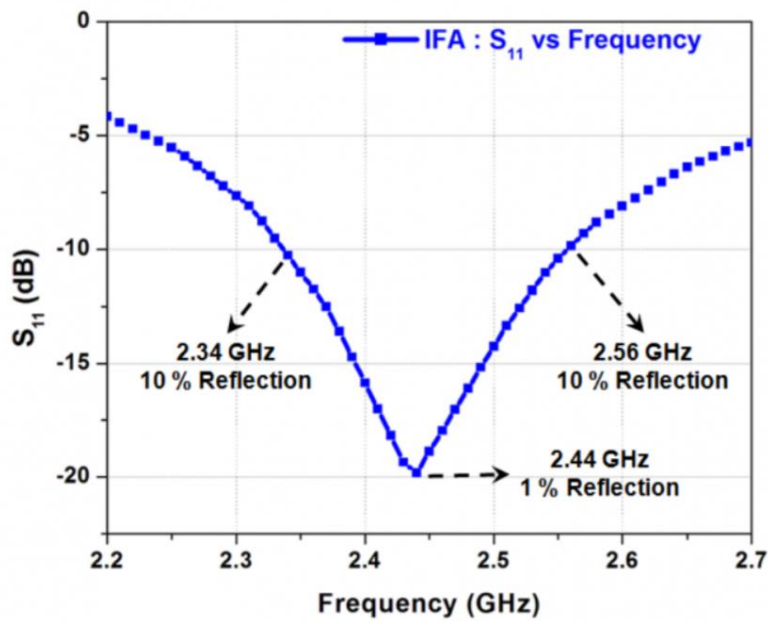
0 Ground, 1 connected to PHY6202AAQA high frequency input, for the antenna receiving and transmitting part of the main body. Its frequency is 2.4G, this antenna is painted on the plate,

turnover 2MM inside no ground wire, and interference signal, and close to the plate edge.

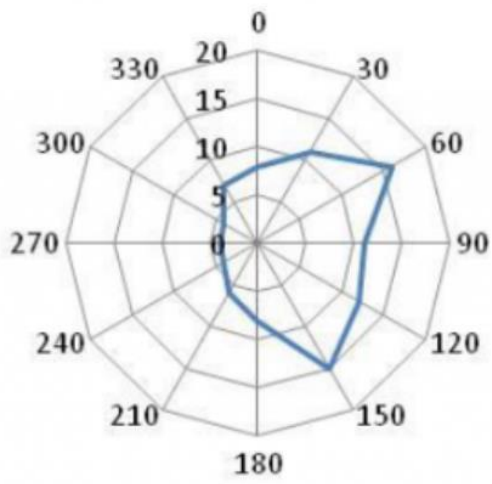
Basic Specifications

No.	Specification	Descriptions	Notes	
1	Antenna Name	Inverted F PCB antenna		
2	Brand			
3	Operation Frequency	<u>2.4~2.483GHz;</u>		
4	Connector Type	PCB self-control		
5	Impedance	50ohm		
6	Gain	2 dBi@2.4~2.483GHz		
7	Efficiency	$\geq 40\%$		
8	VSWR	≤ 2.5		

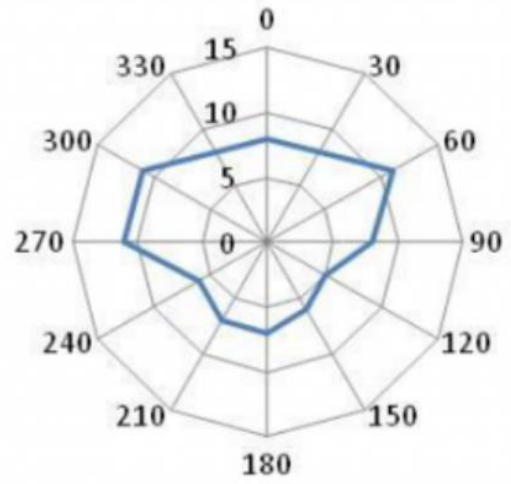
return loss



About Z axis



About Y axis



About X axis

