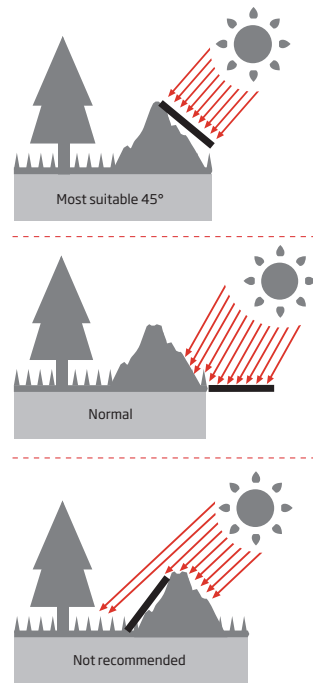
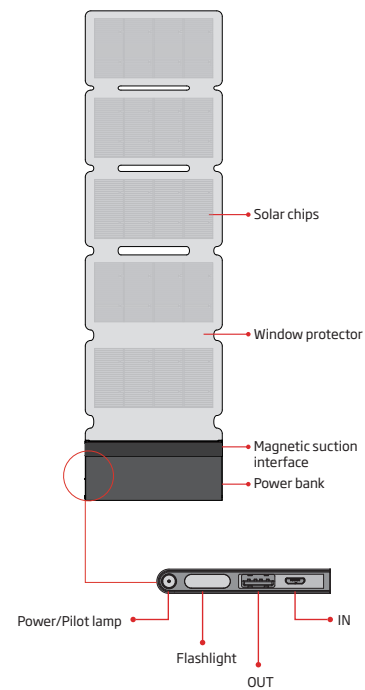


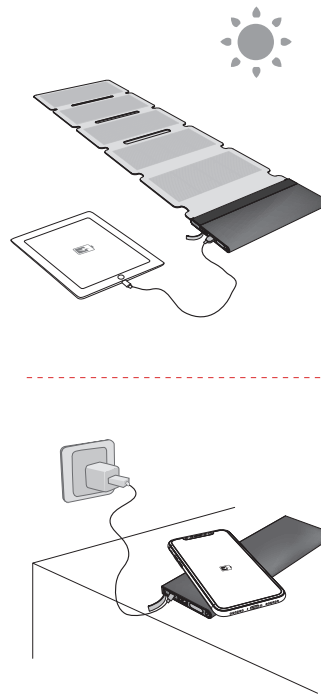
## Sun light angles



## Product details



## How to use



## Operation



STATE	LAMP
Short press, Electric 0%~5%	Red light flicker
Short press, Electric 5%~50%	Red light
Short press, Electric 50%~100%	Green light
Light is not ideal when charging outdoors	Red/green light flicker
Light is ideal when charging outdoors	Red/green light flash
Wireless charging, charging normal	Blue breathing light
The charging load is full, and the charging load is full	Blue light
Wireless charging, charging anomaly	Blue light flicker

Tag:

1. The light is not ideal, proposed to adjust the power angle of paper.
2. Long press button, turn the flashlight on or off.

## Accessories list

Hanergy Solar Power Bank	X1
Instructions	X1
Certificate	X1

## Warning

The product contains lithium polymer core, which is forbidden to disassemble the shell of the product. The removal of the shell of the product can cause damage, leakage and even explosion.

Do not use this product in closed environment.

Do not tear down the film shell, it will damage the circuit.

Do not use this product in closed environment.

Do not pierce the film.

Do not use the product where the temperature is either below -4F or above 122F.

FCC ID: 2AP9U-Z01

This device complies with Part 15 of the FCC Rules. Operation is subject to the following two conditions:

- (1) This device may not cause harmful interference, and
- (2) This device must accept any interference received, including interference that may cause undesired operation.

This device complies with Part 18 of the FCC Rule.

## IMPORTANT SAFETY INSTRUCTIONS

**WARNING** - When using this product, basic precautions should always be followed, including the following:

- Read all the instructions before using the product.
- To reduce the risk of injury, close supervision is necessary when the product is used near children.
- Do not put fingers or hands into the product.
- Do not expose power bank to rain or snow.
- Use of a power supply or charger not recommended or sold by power pack manufacturer may result in a risk of fire or injury to persons.
- Do not use the power bank in excess of its output rating. Overload outputs above rating may result in a risk of fire or injury to persons.
- Do not use the power bank that is damaged or modified. Damaged or modified batteries may exhibit unpredictable behavior resulting in fire, explosion or risk of injury.
- Do not disassemble the power bank. Take it to a qualified service person when service or repair is required. Incorrect reassembly may result in a risk of fire or injury to persons.
- Do not expose a power pack to fire or excessive temperature. Exposure to fire or temperature above 100°C may cause explosion. The temperature of 100°C can be replaced by the temperature of 212°F.
- Have servicing performed by a qualified repair person using only identical replacement parts. This will ensure that the safety of the product is maintained.
- Switch off the power bank when not in use. **SAVE THESE INSTRUCTIONS**

This device complies with Part 18 of the FCC Rule

This device complies with Part 15 of the FCC Rules. Operation is subject to the following two conditions:

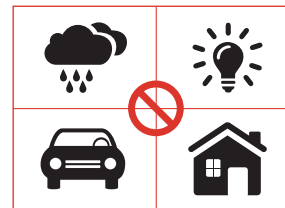
- (1) This device may not cause harmful interference, and
- (2) This device must accept any interference received, including interference that may cause undesired operation.

Attention that changes or modification not expressly approved by the party responsible for compliance could void the user's authority to operate the equipment.

Note: This product has been tested and found to comply with the limits for a Class B digital device, pursuant to Part 15 of the FCC Rules. These limits are designed to provide reasonable protection against harmful interference in a residential installation. This product generates, uses, and can radiate radio frequency energy and, if not installed and used in accordance with the instructions, may cause harmful interference to radio communications. However, there is no guarantee that interference will not occur in a particular installation. If this product does cause harmful interference to radio or television reception, which can be determined by turning the equipment off and on, the user is encouraged to try to correct the interference by one or more of the following measures:

- Reorient or relocate the receiving antenna.
- Increase the separation between the equipment and receiver.
- Connect the equipment into an outlet on a circuit different from that to which the receiver is connected.
- Consult the dealer or an experienced radio/TV technician for help.

## Warning



It is not recommended to use while

- Rainy, snowing, cloudy
- Under light
- In door

- The performance depends on many factors including sun light angle, weather condition and temperature etc.
- It is recommended to use the solar film outdoors and it is advised to avoid shading the film. Otherwise, it will impact the performance of the charger.
- When using this product in low light intensity, i.e. indoors, inside the vehicle the output current could be low, hence it cannot charge other equipments.
- The product temperature may raise/increase during usage.
- Avoid using this product during rain or snow. Do not use water or any chemical liquid to wipe (especially corrosive liquids). Do not put the solar film into the washer.

- This product provides the USB type A interface.
- Please note that this is not a toy, keep it away from children.

## Product information

Type:	HZ-G012011C
Chip:	CIGS
Power:	12.0W
Composite interface:	PLUS IN Magnetic
Battery power:	5000mAh/3.7V
Input voltage:	5.0V---2A(Micro USB)
Output voltage:	5.0V---2A(USB type-A)(Max)
NFC:	Support Qi, 5W output
Working temperature:	-10°C ~ +55°C
Dimension:	200×116×26(mm)
Weight:	460g

\* Standard Test Conditions (STC):  
Cell Temperature at 25°C; Solar irradiance intensity of 1000 W/m<sup>2</sup>; AM1.5 solar reference spectrum (ASTM E892)

The solar chip of different colors is a unique feature of CIGS flexible thin film chip, power performance is not affected, please prevail in kind.

# Hanergy

## operating guide