

WIFI LED TAPE LIGHT

Installation Instructions Smart Tape Light

Model No.: X77538

Remote color chasing
Adhesive 3M tape build into back surface

Easy peel and stick installation

IMPORTANT SAFETY INSTRUCTIONS

Please read and understand this entire manual before attempting to assemble, operate or install the product.

PACKAGE CONTENTS:

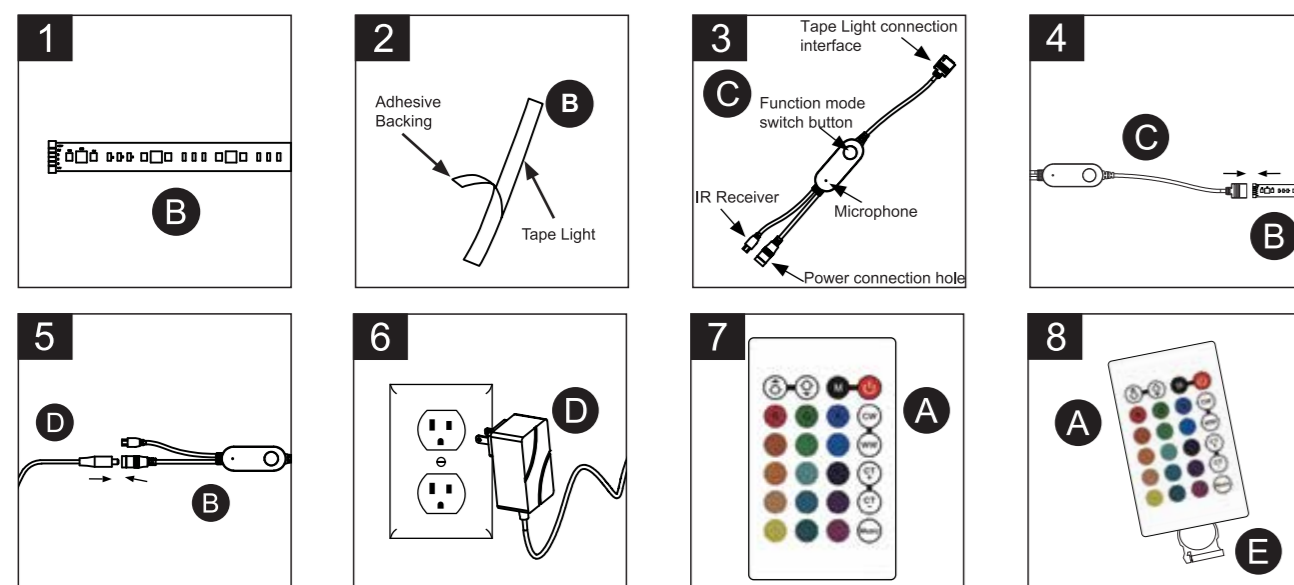
- (1)16.4 ft tape light
- (1) Controller
- (1) Remoter
- (1) User guide

ASSEMBLY INSTRUCTIONS

21967

Note: the product is designed to be mounted to a smooth, non-moving surface.

1. Plan out how you will route the tape light (B) onto make sure there is 16.4 ft available. If any cuts are to be made, follow the "CUTTING TAPE LIGHT" instructions below.
2. Determine best location for controller. Peel the adhesive's protective strip off, sticking the Tape light to the mounting surface. See Fig. 2.
3. Locate the receiver so that the 'IR Receiver' is visible to remote control.
4. Plug the connection interface of receiver (C) into tape light(B) and to make full contact, avoid the current cannot pass, resulting in the lighting is not bright.
5. And then plug the power connection hole of receiver (C) into power supply (D) and fully tighten threaded connector to keep water out.
6. Plug power adapter (D) into wall socket.
7. Use remote control (A) for independent ON/OFF control of multiple color presets, or you can switch to any mode you like on the remote control. Please remove plastic tab from battery door before use.
8. To replace remove control battery (E), follow directions on back of the remote control (A) to slide battery drawer out. Replace battery (+side up) and slide battery back in.



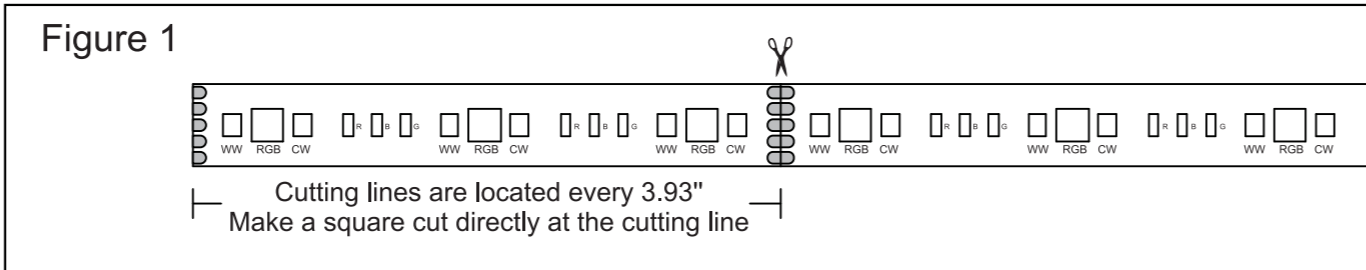
WARNING:

These products may represent a possible shock or fire hazard if improperly installed or attached in any way. Products should be installed in accordance with these instructions, current electrical codes and/or the current National Electric Code (NEC).

CUTTING TAPE LIGHT

Note: Tape light can be cut once, if needed, at a specific cutting mark as illustrated below. Once the 16.4-ft length is cut, only the end with the connected power lead can be used. The tail end is not usable unless connected with the connector (see the "CONNECTING TAPE LIGHT" below).

1. Determine nearest cutting line that is best suited for the specific installation. The cutting lines are located every 3.93" (see figure 1).
2. Using a pair of side cutters or quality scissors, making sure the cut is square, measured to the nearest cutting increment that will fit in the space. As accurately as possible, double-checking which cutting line is for the space, cut directly along the cutting line (see figure 1).



WARNING:

- Disconnect power at source prior to attempting installation.
- This product is not a toy and contains small parts. Close supervision is needed when used near children.
- The remote control contains a CR2025 battery (button battery). If swallowed, it can cause severe injury or death in just 2 hours. Seek medical attention immediately.
- Do not dispose of batteries in fire. Batteries may explode or leak. Remove exhausted batteries from the product. Please dispose of batteries properly.
- Never fold tape light. Never bend past the bend radius of 60° whether powered off or lighted.
- Never operate tape light while it is coiled on a reel.
- Route and secure cords so that they will not be pinched or damaged in any way. Do not use staples, nails, or other sharp objects to mount the tape light or cords as this may damage the outer jacket of the product.
- Do not install near or around flammable or corrosive materials. Do not cover product.
- This product is intended for dry-location use only. Do not locate in damp or wet locations or where water may be present.
- When adding additional tape light segments, use only same tape light extension segments. Non-Linkable.
- Only use the power adapter included with the kit. Do not operate with any other power supply.
- The National Electrical Code (NEC) does not permit cords to be concealed where damage to insulation may go unnoticed. To prevent fire danger, do not run cord behind walls, ceilings, soffits, or cabinets where it may be inaccessible for examination. Cords should be visually examined periodically and immediately replaced when damage is noted.

FCC Compliance Statement:

This device complies with part 15 of the FCC Rules. Operation is subject to the following two conditions:

1. This device may not cause harmful interference.
2. This device must accept any interference received, including interference that may cause undesired operation.

Changes or modifications not expressly approved by the party responsible for compliance could void the user's authority to operate the equipment.

FCC WARNING

This equipment has been tested and found to comply with the limits for a Class B digital device, pursuant to Part 15 of the FCC Rules. These limits are designed to provide reasonable protection against harmful interference in a residential installation. This equipment generates, uses and can radiate radio frequency energy and, if not installed and used in accordance with the instructions, may cause harmful interference to radio communications. However, there is no guarantee that interference will not occur in a particular installation. If this equipment does cause harmful interference to radio or television reception, which can be determined by turning the equipment off and on, the user is encouraged to try to correct the interference by one or more of the following measures:

- Reorient or relocate the receiving antenna.
- Increase the separation between the equipment and the receiver.
- Connect the equipment into an outlet different from that to which the receiver is connected.
- Consult the dealer or an experienced radio/TV technician for help.

This equipment should be installed and operated with a minimum distance of 20 cm between the radiator and your body.

Maintenance

Do not use chemical solvents or harsh abrasives to clean tape light.

QUICK GUIDE TO CONNECT YOUR STRING LIGHTS TO THE TUYA APP



1. DOWNLOAD THE TUYA APP BY SCANNING THE QR CODE BELOW.

You can also download the T app by searching "Tuya" in either the Apple Store or Google Play.

2. REGISTER A TUYA ACCOUNT

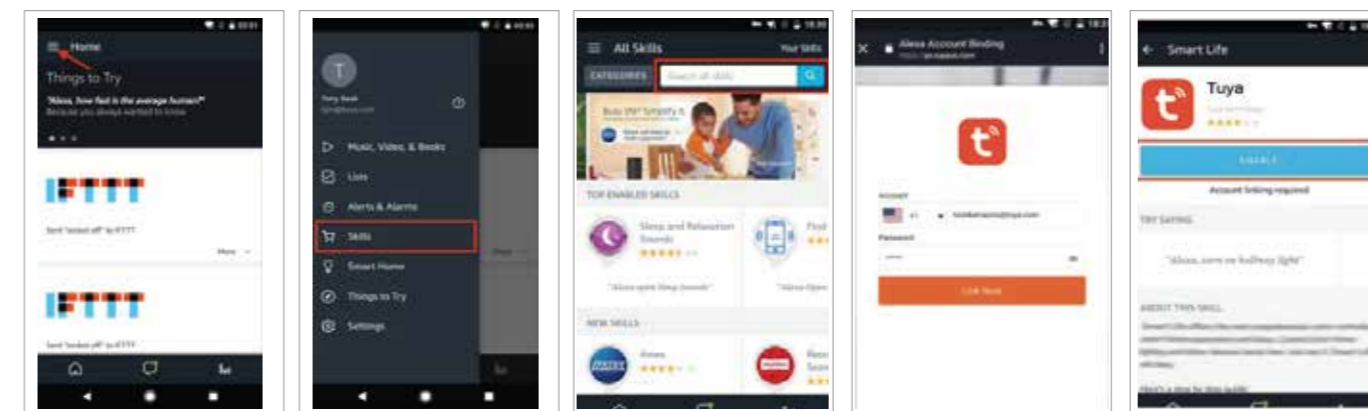
Open the Tuya app and tap "Register". Follow the onscreen instructions to create an account. Sign into your new account once setup.

3. ADD THE DEVICE TO YOUR TUYA ACCOUNT

- a) Once you have successfully signed in, select "Add Device".
- b) Select "Lighting" from the left-hand side menu and then select "Light Source (Wi-Fi)".
- c) Select the Wi-Fi network you would like the light string to be connected to. Enter the appropriate password to the desired Wi-Fi network.
- d) Plug-in the light string into electrical socket. Click and hold the "Power" button on the light controller for 5 seconds until all the bulbs begin flashing. Once flashing, go back on the app and select that you confirm the bulbs are flashing.
- e) The app will begin searching for the light string.
- f) Once the light string appears on screen, select it and then select "Done".
- g) At this point, you can change the device name to any name you prefer.

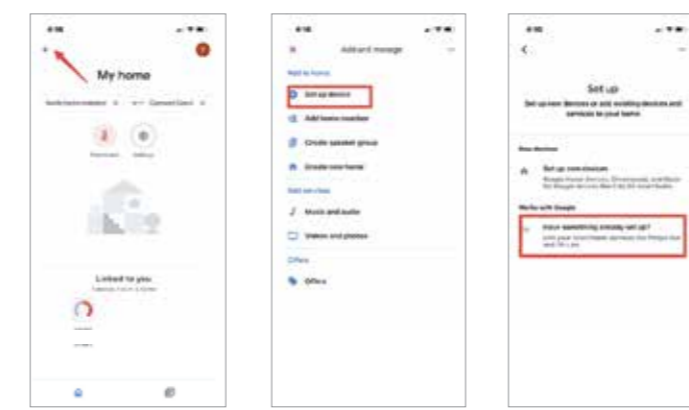
4. LINKING THE TUYA ACCOUNT TO ALEXA

- a) On the Alexa App Home Page, click on the Home page Menu and select "Skills and Games".
- b) Select the magnifying glass icon and type in "Tuya".
- c) Select the Tuya app in the search results.
- d) Click on "Enable to Use".
- e) You will be redirected to an account link page. Type in your Tuya account and password.
- f) Once signed-in, tap "Link Now" to successfully link your Tuya account.

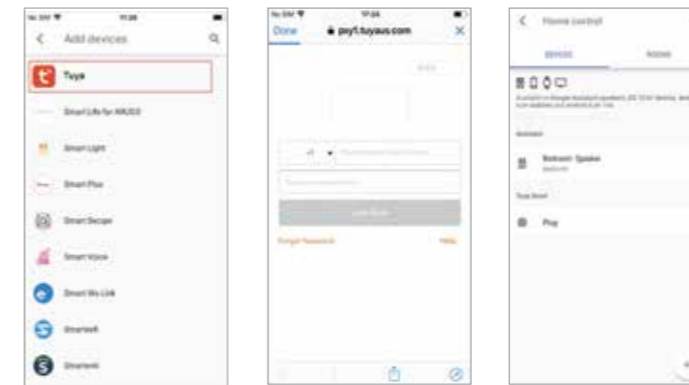


5. LINKING THE TUYA ACCOUNT TO GOOGLE HOME

a) On the homepage of Google Home App, click the button in the upper left-hand corner, select "+", select "Setup device" under the list of "Add and Manage", and then click "Have something already set up".



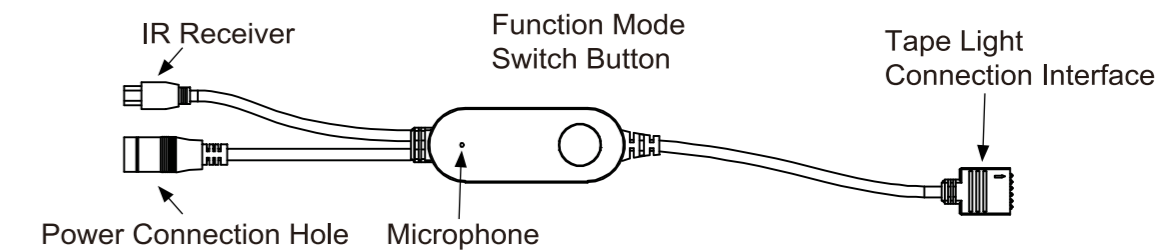
b) Find "Tuya" in the list. In the new window, select your Tuya account's region, type your Tuya account's password, then tap "Link Now". After you assign rooms for devices, your devices will be listed in the Home Control page.



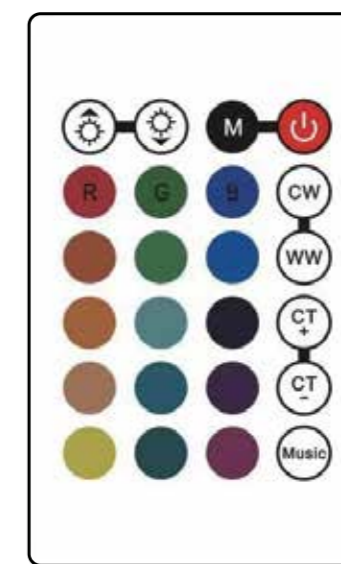
Controller instructions

The default setting of the WIFI controller have 1 buttons function in the sequence of RGBW (sequence RGBW+WW for RGB version). If you want to switch to the different mode, follow the steps below, you can choose any mode you like and enjoy it.

- (1) Press and keep 5 seconds, and the configuration modes will appear.
- (2) Turn on the WW lights.
- (3) Turn on the WW+CW lights.
- (4) Turn on the CW lights.
- (5) Turn on the CW+WW lights.
- (6) Single colors darken.
- (7) 7 color jump.
- (8) 3 color jump.
- (9) 7 color fade.
- (10) OFF.



REMOTE CONTROL OPERATING INSTRUCTIONS:



Dimming (Brighten) Or Increase Color. Change Speed.	Dimming (Darken) Or Decrease Color. Change Speed.	6 Mode Switch.	ON/OFF Keep Press and keep 5 seconds, and configuration modes will appear.
Red	Green	Blue	Cool White
Hot Pink	Prasinous	Dark Blue	Warm White
Orange	Light Cyan	Purpleish Grey	CCT Increase
Light Yellow	Natural Purple	Green Yellow	CCT Decrease
Yellow	Cyan	Purple	Music Mode