



Toll Free customer service  
number: 866-461-8665

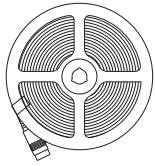
ITM. / ART.  
Model:

**Easy peel and stick installation with adhesive tape built into back surface**

## IMPORTANT SAFETY INSTRUCTIONS

**Please read and understand this entire manual before attempting to assemble, operate or install the product**

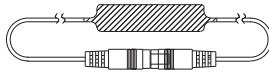
### PACKAGE CONTENTS:



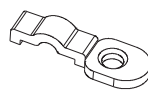
A - 16.4FT LED  
COB Tape  
Light(x1)



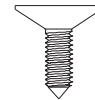
B - 24V 2A  
Power Adaptor  
(x1)



C - Controller (x1)



D - Mounting  
Clips (x18)



E - Mounting  
Screws (x18)



F - Remoter  
(x1)



G - Battery  
(x1)

**Note: Hardware not shown to actual size.**

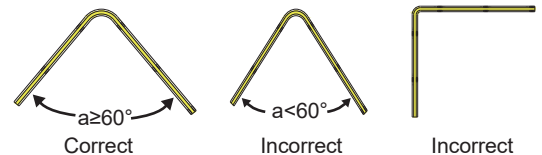
## ⚠ SAFETY INFORMATION

Please read and understand this entire manual before attempting to assemble, operate or install the product

## READ AND FOLLOW ALL SAFETY INSTRUCTIONS

### ⚠ WARNING

- Disconnect power at source prior to attempting installation.
- This product is not a toy and contains small parts. Close supervision is needed when used near children.
- Never fold tape light. Never bend past the bend radius of 60° whether powered off or lighted.
- Never operate tape light while it is coiled on a reel
- Route and secure cords so that they will not be piched or damaged in any way. Do not use staples, nails, or other sharp objects to mount the tape light or cords as this may damage the outer jacket of the product.
- Do not install near or around flammable or corrosive materials. Do not cover product.
- This product is intended for dry location use only. Do not locate in damp or wet locations nor where water may be present.
- Only use the power adaptor included with the kit. Do not operate with any other power supply. The National Electrical Code (NEC) does not permit cords to be concealed where damage to insulation may go unnoticed. To prevent fire danger, do not run cord behind walls, ceilings, soffits, or cabinets where it may be inaccessible for examination. Cords should be visually examined periodically and immediately replaced when and damage is noted.
- Do not turn and leave the light while the light is still wound up in spool. The light will heat up when lit, the plastic of the spool will melt, smoke, and even start a fire.



## FCC Compliance Statement

This device complies with part 15 of the FCC Rules. Operation is subject to the following two conditions:

1. This device may not cause harmful interference, and
2. This device must accept any interference received including interference that may cause undesired operation of the device.

## FCC WARNING

Note: this equipment has been tested and found to comply with the limits for a Class B digital device, pursuant to Part 15 of the FCC Rules. These limits are designed to provide reasonable protection against harmful interference in a residential installation. This equipment generates, uses and can radiate radio frequency energy and if not installed and used in accordance with the instructions, may cause harmful interference to radio communications. However there is no guarantee that interference will not occur in a particular installation. If this equipment does cause harmful interference to radio or television reception, which can be determined by turning the equipment off and on, the user is encouraged to try to correct the interference by one or more of the following measures:

- Reorient or relocate the receiving antenna
- Increase the separation between the equipment and the receiver
- Connect the equipment into an outlet different from that to which the receiver is connected. Consult the dealer or an experienced radio/ TV technician for help

Any changes or modifications not expressly approved by the party responsible for compliance could void the user's authority to operate the equipment.

## FCC Radiation Exposure Statement

- This device complies with FCC RF radiation exposure limits set forth for an uncontrolled environment. This transmitter must not be co-located or operating in conjunction with any other antenna or transmitter.
- This device must operate with a minimum distance of 20 cm between the radiator and user body.

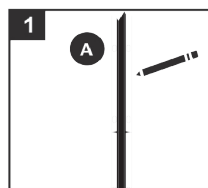


**WARNING:** This product can expose you to chemicals including lead which is known to the State of California to cause cancer and birth defects or other reproductive harm. For more information go to [www.P65Warnings.ca.gov](http://www.P65Warnings.ca.gov).

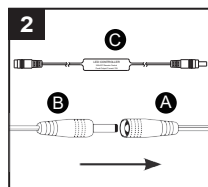
## INSTALLATION INSTRUCTIONS

Disconnect power at source prior to attempting installation. This product is designed to be mounted to a clean, smooth, non-moving surface. Test the LED strip before tearing off the protective paper. Once placed, it should not be removed or repositioned. NOTE: For best results, let the adhesive cure for 24 hours before using lights. This LED product is designed to be used only with the 24V DC power adapter included with the kit. Do not operate with any other power supply type.

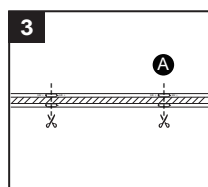
1. Determine the desired location for installation of the tape light (A). Keep in mind the distance to the nearest power outlet should not exceed 60 inches. Lightly mark the location.



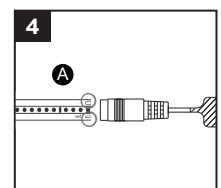
2. Using the included In-Line Controller (C), connect the male (B) end of the power cable to the female (A) end of the tape light.



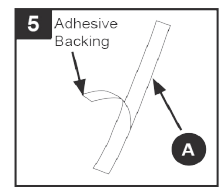
3. Cutting the tape light: Tape light is cuttable at marked increments (every 1.97"; avoid the soldered junctures). Use a pair of sharp scissors to cut the tape light at a cutting increment, as indicated.



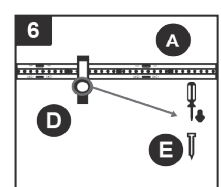
4. Using controller (C): connect with tape light (A). Note: make sure they are installed correctly.



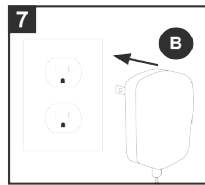
5. Remove the cover from the adhesive backing on the tape light (A). Gently press the tape light (A) into place according to the marks made in step 1. Repeat the step until all pieces of tape light (A) have been installed.



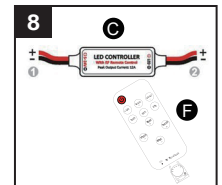
6. Install using the Mounting Clips (D) with mounting screws (E) onto solid/sturdy surfaces. Mounting clips (D) should be evenly spaced and make sure they are properly securing tape light (A).



7. Plug the 24V DC power adapter (B) to an appropriate power outlet.



8. Please pull out the insulate part before using. When using the remote (F) to remotely control the controller (C), it's not necessary to aim at the controller (C) when operate. Because the RF wireless remote signal can pass through barrier. (Note: For proper receiving remote signal, do not install the controller (C) in closed metal parts.)



## PREPARATION

Before beginning assembly, installation, or operation of product, make sure all parts are present. Compare parts with package and hardware contents lists on page 1. If any part is missing or damaged, do not attempt to assemble, install or operate the product. Contact customer service for replacement parts.

Helpful Tools (not included): Philips screwdriver, Pencil, Scisso, Ruler.

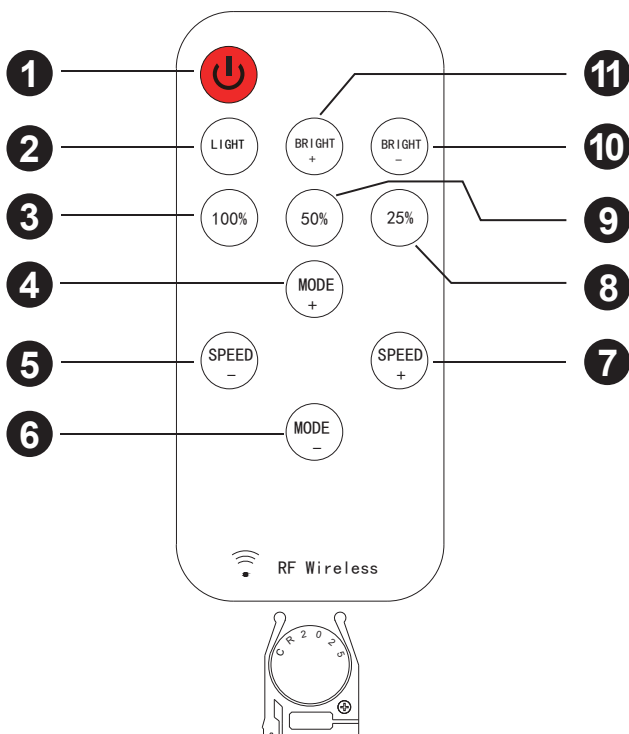
Estimated assembly time: 15 - 20 minutes

## OPERATION

### Functions of the remote

- Pull out the plastic battery barrier sheet from the battery compartment located on the bottom of the remote.
- The remote does not require line-of-sight to operate the lights. Range will vary depending on your building structure and where the receiver on the tape light is mounted.
- The remote can operate up to 50 feet in optimal conditions, but each installation has unique variables that may affect range.

## FUNCTIONS



### 1. Turn On/ Standby

Press this key to turn on unit or switch to standby mode. Unit will turn on and restore to previous status at powering on moment.

### 2. Lighting mode

Switch to lighting mode from dynamic mode.

### 3/8/9. Dimmer Adjust Shortcuts

Switch to 100%, 50%, or 25% brightness lighting mode.

### 4/6. Dynamic Mode Adjust

Switch to dynamic mode from lighting mode, or switch between different dynamic modes.

### 5/7. Speed Adjust

Adjust playing speed of dynamic modes. Press SPEED+ to increase speed and press SPEED- to decrease.

### 10/11. Brightness Adjust (Dimmer)

Adjust lighting mode brightness. Press BRIGHT+ to increase brightness and press BRIGHT- to decrease.

**!** The remote battery is 3V CR2025 type, please only replace with same type battery

## CARE AND MAINTENANCE

- Do not use chemical solvents or harsh abrasives to clean lights.
- LEDs are not serviceable. Do not attempt to open or service LEDs.
- To clean the light, use a clean dry or slightly damp cloth.

## TROUBLESHOOTING

- 1) Tape Light will not light up.
  - a) Ensure all connections are correct and have not disconnected.
- 2) Lights will not light up after using dimmer connectors
  - a) Check all straight connectors ,make sure the teeth on the connector line up with the copper conductors on the tape light
  - b) Make sure the straight connectors are fully closed, to ensure they are installed correctly.
  - c) The polarity is incorrect. Check that the orientation of the input and output match the markings on the case.
  - d) Batteries in the remote are dead, improperly installed,or the battery protector has not been removed. Make sure the battery protective strip is removed.Check that the orientation and type of battery are correct and that the battery is not depleted.
  - e) The remote is too far from the receiver. The remote can operate up to 50 feet in optimal conditions, but each installation has unique variables that may affect range.
- 3) The fuse blows or a circuit breaker trips when the light is turned on.
  - a) A wire is exposed. Discontinue use of the lamp. Unplug the unit fromthe wall.Contact a qualified electrician.

**If unable to fix any of the above issues, please consult a certified electrician.**

## 90-DAY LIMITED WARRANTY:

This Better Homes & Gardens® brand tape light carries a 90-Day Limited Warranty to the original purchaser. If, during normal use, this Better Homes & Gardens® tape light fails due to a defect in material and workmanship within ninety (90) days from the date of purchase, simply bring this tape light with your original sales receipt back to your nearest Wal-Mart™ retail store. At its discretion, Better Homes & Gardens® agrees to have the tape light replaced with the same or similar Better Homes & Gardens® product free of charge, within the stated warranty period, when returned by the original purchaser with original sales receipt. Notwithstanding the foregoing, this limited warranty does not cover damage or failure caused by misuse or abuse including but not limited to improper installation, accident, unauthorized repair, maintenance, or modifications of the merchandise. This warranty: (1) excludes expendable parts including but not limited to light bulbs, batteries; (2) carries a 90-day finish warranty protecting finish against tarnishing, flaking, and discoloration; (3) shall be void if this flex light is not installed in the U.S.A; (4) does not cover products installed within three miles of saltwater coastline or any area prone to salt spray; and (5) does not cover any losses, labor, injuries to persons/property or costs. This warranty does give you specific legal rights and you may have other rights, which vary from state to state. Be careful, it is recommended that installation be done by a qualified professional; the purchaser has sole responsibility for proper installation in compliance with all state and local code requirements. Seller's employees are not qualified to advise you on the use of this Merchandise. Any oral representation(s) made will not be binding on seller or its employees. The rights under this limited warranty are to the original purchaser of the Merchandise and may not be transferred to any subsequent owner. This limited warranty is in lieu of all warranties, expressed or implied including warranties or merchantability and fitness for a particular purpose. Seller shall not be liable for any special, incidental, or consequential damages. The sole exclusive remedy against the seller will be for the replacement of any defects as provided herein, as long as the seller is willing or able to replace this product or is willing to refund the purchase price as provided above.

©2023 Distributed by Wal-mart Stores, Inc. Bentonville, AR 72716 Made in Vietnam