



Toll Free customer service
number: 866-461-8665

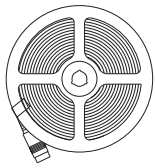
ITM. / ART. BHS428069827004
Model: GW-COB-WW-480D-16.4FT

Easy peel and stick installation with adhesive tape built into back surface

IMPORTANT SAFETY INSTRUCTIONS

Please read and understand this entire manual before attempting to assemble, operate or install the product

PACKAGE CONTENTS:



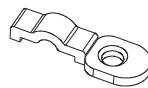
A - 16.4FT LED COB Tape Light (x1)



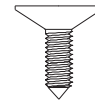
B - 24V 1.5A Power Adaptor (x1)



C - Controller (x1)



D - Mounting Clips (x18)



E - Mounting Screws (x18)



F - Remoter (x1)



G - Battery (x1)

Note: Hardwares are not shown to actual size.

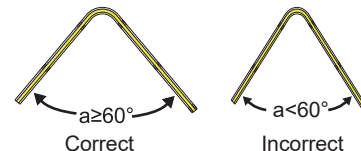
⚠ SAFETY INFORMATION

Please read and understand this entire manual before attempting to assemble, operate or install the product

READ AND FOLLOW ALL SAFETY INSTRUCTIONS

⚠ WARNING

- Disconnect power at source prior to attempting installation.
- This product is not a toy and contains small parts. Close supervision is needed when used near children.
- Never fold tape light. Never bend less than the bend radius of 60° whether powered off or lighted.
- Never operate tape light while it is coiled on a reel, route and secure cords so that they will not be piched or damaged in any way. Do not use staples, nails, or other sharp objects to mount the tape light or cords as this may damage the outer jacket of the product.
- Do not install near or around flammable or corrosive materials. Do not cover product.
- This product is intended for dry location use only. Do not locate in damp or wet locations nor where water may be present.
- Only use the power adaptor included with the kit. Do not operate with any other power supply. The National Electrical Code (NEC) does not permit cords to be concealed where damage to insulation may go unnoticed. To prevent fire danger, do not run cord behind walls, ceilings, soffits, or cabinets where it may be inaccessible for examination. Cords should be visually examined periodically and immediately replaced when any damage is noted.
- Do not turn and leave the light while the light is still wound up in spool. The light will heat up when lit, the plastic of the spool will melt, smoke, and even start a fire.



FCC Compliance Statement

This device complies with part 15 of the FCC Rules. Operation is subject to the following two conditions:

1. This device may not cause harmful interference, and
2. This device must accept any interference received including interference that may cause undesired operation of the device.

FCC WARNING

Note: this equipment has been tested and found to comply with the limits for a Class B digital device, pursuant to Part 15 of the FCC Rules. These limits are designed to provide reasonable protection against harmful interference in a residential installation. This equipment generates, uses and can radiate radio frequency energy and if not installed and used in accordance with the instructions, may cause harmful interference to radio communications. However there is no guarantee that interference will not occur in a particular installation. If this equipment does cause harmful interference to radio or television reception, which can be determined by turning the equipment off and on, the user is encouraged to try to correct the interference by one or more of the following measures:

- Reorient or relocate the receiving antenna
- Increase the separation between the equipment and the receive
- Connect the equipment into an outlet different from that to which the receiver is connected. Consult the dealer or an experienced radio/ TV technician for help

Any changes or modifications not expressly approved by the party responsible for compliance could void the user's authority to operate the equipment.

FCC Radiation Exposure Statement

- This device complies with FCC RF radiation exposure limits set forth for an uncontrolled environment. This transmitter must not be co-located or operating in conjunction with any other antenna or transmitter.
- This device must operate with a minimum distance of 20 cm between the radiator and user body.

FCC SUPPLIER'S DECLARATION OF CONFORMITY

Company Name: OLYMPIA TOOLS INTERNATIONAL INC

Address: 929 N Grand Ave, Covina, CA 91724

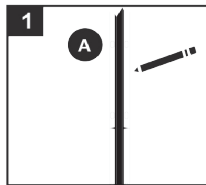


WARNING: This product can expose you to chemicals including lead which is known to the State of California to cause cancer and birth defects or other reproductive harm. For more information go to www.P65Warnings.ca.gov.

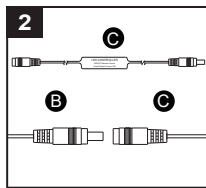
INSTALLATION INSTRUCTIONS

Disconnect power at source prior to attempting installation. This product is designed to be mounted to a clean, smooth, non-moving surface. Remove LED Strip from Spool. Test the LED strip before tearing off the protective paper. Once placed, it should not be removed or repositioned. NOTE: For best results, let the blue adhesive 100% fully adhere to the surface before using lights. This LED product is designed to be used only with the 24V DC power adaptor included with the kit. Do not operate with any other power supply type.

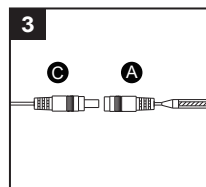
1. Determine the desired location for installation of the tape light (A). Keep in mind the distance to the nearest power outlet should not exceed 60 inches. Lightly mark the location.



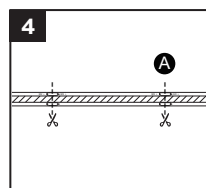
2. Use the included In-Line Controller (C), connect the power adaptor (B).



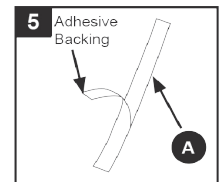
3. Use controller(C): connect with tape light(A), Note: make sure they are installed correctly.



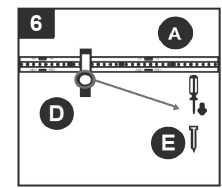
4. Cut the tape light: Tape light is cuttable at marked increments (every 1.97"; avoid the soldered junctures). Use a pair of sharp scissors to cut the tape light at a cutting increment, as indicated.



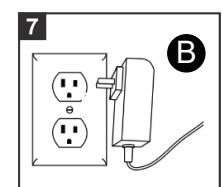
5. Remove the cover from the adhesive backing on the tape light (A). Gently press the tape light (A) into place according to the marks made in step 1. Repeat the step until all pieces of tape light (A) have been installed.



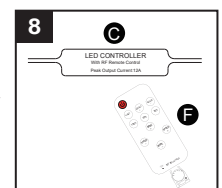
6. Install using the Mounting Clips (D) with mounting screws (E) onto solid/sturdy surfaces. Mounting clips (D) should be evenly spaced and make sure they are properly securing tape light (A).



7. Plug the 24V DC power adaptor (B) to an appropriate power outlet.



8. Please pull out the insulate part before using. When using the remoter (F) to remotely control the controller(C), it is not necessary to aim at the controller (C) when operate. The RF wireless remoter signal can pass through barrier (Note: The controller cannot be installed in an environment surrounded by metal which may affect the controller to receive signals.)



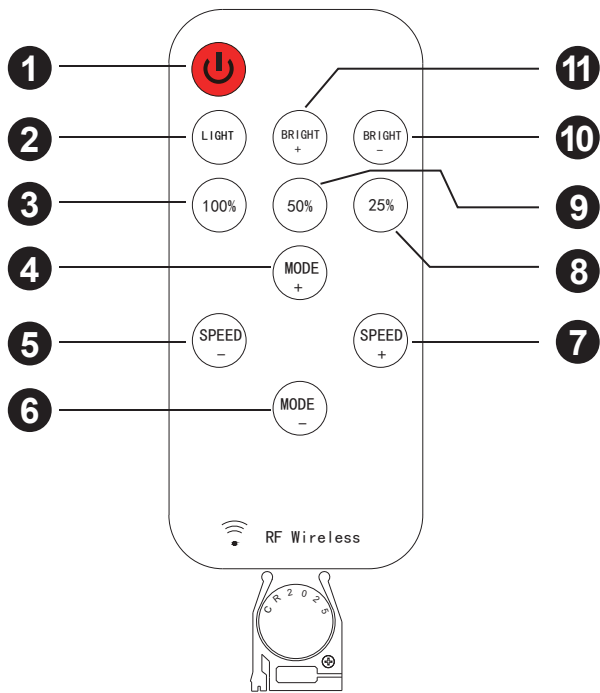
PREPARATION

Before beginning assembly, installation, or operation of product, make sure all parts are present. Compare parts with package and hardware contents lists on page 1. If any part is missing or damaged, do not attempt to assemble, operate or install the product. Contact customer service for replacement parts.

Helpful Tools (not included): #1 Philips screwdriver, Pencil, Scissor, Ruler.

Estimated assembly time: 15 - 20 minutes

FUNCTIONS



1. Turn On/ Standby

Press this key to turn on unit or switch to standby mode. Unit will turn on and restore to previous status at powering on moment.

2. Lighting mode

Switch to lighting mode from dynamic mode.

3/8/9. Dimmer Adjust Shortcuts

Switch to 100%, 50%, or 25% brightness lighting mode.

4/6. Dynamic Mode Adjust

Switch to dynamic mode from lighting mode, or switch between different dynamic modes.

5/7. Speed Adjust

Adjust playing speed of dynamic modes. Press SPEED+ to increase speed and press SPEED- to decrease.

10/11. Brightness Adjust (Dimmer)

Adjust lighting mode brightness. Press BRIGHT+ to increase brightness and press BRIGHT- to decrease.

WARNING:

1. The remote control included utilizes a 3V CR2025 battery; only replace with same battery type.
2. Remove and immediately recycle or dispose of used batteries according to local regulations, and keep away from children. Do NOT dispose of batteries in household trash or incinerate.
3. Even used batteries may cause severe injury or death.
4. The remote control contains a button battery. If swallowed, it could cause severe injury or death in just 2 hours. If you suspect your child has swallowed or inserted a button battery, immediately seek urgent medical assistance.
5. Non-rechargeable batteries are not to be recharged.
6. Do not force discharge, recharge, disassemble, heat above 140°F / 60°C or incinerate. Doing so may result in injury due to venting, leakage or explosion resulting in chemical burns.
7. Ensure the batteries are installed correctly according to polarity (+ and -).
8. Do not mix old and new batteries, different brands or types of batteries, such as alkaline, carbon-zinc, or rechargeable batteries.
9. Remove and immediately recycle or dispose of batteries from equipment not used for an extended period of time according to local regulations.
10. Always completely secure the battery compartment. If the battery compartment does not close securely, stop using the product, remove the batteries, and keep them away from children.

⚠ WARNING:

- **INGESTION HAZARD:** This product contains a button cell or coin battery
- **DEATH** or serious injury can occur if ingested.
- A swallowed button cell or coin battery can cause **Internal Chemical Burns** in as little as **2 hours**
- **KEEP** new and used batteries **OUT OF REACH** of **CHILDREN**
- **Seek immediate medical attention** if a battery is suspected to be swallowed or inserted inside any part of the body.



OPERATION

Functions of the remote

- Pull out the plastic battery barrier sheet from the battery compartment located on the bottom of the remote.
- The remote does not require line-of-sight to operate the lights. Range will vary depending on your building structure and where the receiver on the tape light is mounted.
- The remote can operate up to 50 feet in optimal conditions, but each installation has unique variables that may affect range.

CARE AND MAINTENANCE

- Do not use chemical solvents or harsh abrasives to clean lights.
- LEDs are not serviceable. Do not attempt to open or service LEDs.
- To clean the light, use a clean dry or slightly damp cloth.

TROUBLESHOOTING

1. Tape Light will not light up.

- a) Ensure all connections are correct and have not disconnected.
- b) Whether the power outlet is open, and ensure that there is current through.
- c) Whether the switch of the remote control is controlled to the tape light, and the controller has received the signal from the remoter.

2. The remoter cannot be controlled, or the controller fails.

- a) Batteries in the remote are dead, improperly installed, or the battery protector has not been removed.
- b) The remote is too far from the receiver. The remote can operate up to 50 feet in optimal conditions, but each installation has unique variables that may affect range.
- c) The controller cannot be installed in an environment surrounded by metal, avoiding the controller cannot receive signals.

3. The fuse blows or a circuit breaker trips when the light is turned on.

- a) If the wire is exposed, discontinue use of the lamp. Unplug the unit from the wall. Then contact a qualified electrician.

If unable to fix any of the above issues, please consult a certified electrician.

90-DAY LIMITED WARRANTY:

This Better Homes & Gardens® brand tape light carries a 90-Day Limited Warranty to the original purchaser. If, during normal use, this Better Homes & Gardens® tape light fails due to a defect in material and workmanship within ninety (90) days from the date of purchase, simply bring this tape light with your original sales receipt back to your nearest Wal-Mart™ retail store. At its discretion, Better Homes & Gardens® agrees to have the tape light replaced with the same or similar Better Homes & Gardens® product free of charge, within the stated warranty period, when returned by the original purchaser with original sales receipt. Notwithstanding the foregoing, this limited warranty does not cover damage or failure caused by misuse or abuse including but not limited to improper installation, accident, unauthorized repair, maintenance, or modifications of the merchandise. This warranty: (1) excludes expendable parts including but not limited to light bulbs, batteries; (2) carries a 90-day finish warranty protecting finish against tarnishing, flaking, and discoloration; (3) shall be void if this flex light is not installed in the U.S.A; (4) does not cover products installed within three miles of saltwater coastline or any area prone to salt spray; and (5) does not cover any losses, labor, injuries to persons/property or costs. This warranty does give you specific legal rights and you may have other rights, which vary from state to state. Be careful, it is recommended that installation be done by a qualified professional; the purchaser has sole responsibility for proper installation in compliance with all state and local code requirements. Seller's employees are not qualified to advise you on the use of this Merchandise. Any oral representation(s) made will not be binding on seller or its employees. The rights under this limited warranty are to the original purchaser of the Merchandise and may not be transferred to any subsequent owner. This limited warranty is in lieu of all warranties, expressed or implied including warranties or merchantability and fitness for a particular purpose. Seller shall not be liable for any special, incidental, or consequential damages. The sole exclusive remedy against the seller will be for the replacement of any defects as provided herein, as long as the seller is willing or able to replace this product or is willing to refund the purchase price as provided above.

©2023 Distributed by Wal-mart Stores, Inc. Bentonville, AR 72716 Made in Vietnam