

**Important Note:**

Item#J56963 WIFI

**Radiation Exposure Statement**

This equipment complies with FCC radiation exposure limits set forth for an uncontrolled environment. This equipment should be installed and operated with minimum distance 0cm between the radiator and your body. This transmitter must not be co-located or operating in conjunction with any other antenna or transmitter.

1 SET OF 12 COUNT  
**WIFI APPLICATION  
24FT STRING LIGHTS**

**TWO-YEAR LIMITED WARRANTY**

If, during normal use, this lighting fixture breaks or fails due to a defect in material and workmanship within two (2) year from the date of original purchase, simply bring this lighting fixture with your original sales receipt back to your nearest retail store. At its discretion, agrees to have the product or any defective part(s) repaired or replaced with the same or similar product free of charge, within the stated warranty period, when returned by the original purchaser with original sales receipt. This warranty; (1) excludes expendable parts including but not limited to light bulbs; (2) does not cover damage that has resulted from abuse or misuse; and (3) does not cover any losses, labor, injuries to persons/property or costs. This warranty does give you specific legal rights and you may have other rights, which vary from state to state.

**PACKAGE CONTENTS**

DESCRIPTION	QUANTITY
24 foot string light	1
Plug-in power supply	1
4-pin S14 lamps	14
Controller	1



Questions, problems, missing parts?  
Before returning to your retailer, call our customer service at  
**X-XXX-XXX-XXXX** Monday – Friday 8:00 a.m. – 5:00 p.m. CST



Questions, problems, missing parts?  
Before returning to your retailer, call our customer service at  
**X-XXX-XXX-XXXX** Monday – Friday 8:00 a.m. – 5:00 p.m. CST

## ⚠ SAFETY INFORMATION

Please read and understand this entire manual before attempting to assemble, operate or install the product.  
**WARNING: When using outdoor use portable lighting products, basic safety precautions should always be followed to reduce the risk of fire, electric shock, and personal injury including the following:**

### READ AND FOLLOW ALL SAFETY INSTRUCTIONS

- a) Ground Fault Circuit Interrupter (GFCI) protection should be provided on the circuits or outlet to be used for the outdoor use string light product. Receptacles are available that have built-in GFCI protection for this measure of safety.
- b) Only use outdoor extension cords such as type SEW, SEOW, SEOOW, SOW, SOOW, STW, STOW, STOOW, SJEW, SJEOW, SJEOOW, SJW, SJOW, SJOOW, SJTW, SJTOW, or SJTOOW. This designation is marked on the wire of the extension cord.
- Read and follow all instructions that are on the product or provided with the product.
- This product operates at 12V, 1.5A, 9W per string**
- This seasonal use product is not intended for permanent installation or use.
- Do not mount or place near gas or electric heaters, fireplaces, candles, or other similar sources of heat.
- Do not secure the wiring of the product with staples or nails, or place on sharp hooks or nails.
- Do not let lamps rest on the supply cord or on any wire.
- Unplug the product when leaving the vicinity of the product or when left unattended.
- This is an electric product and is not a toy! To avoid risk of fire, burns, personal injury, and electric shock, it should not be played with or placed where small children can reach it.
- Do not use this product for other than its intended use.
- Do not hang ornaments or other objects from cord, wire, or light string.
- Do not close doors or windows on the product or extension cords as this may damage the wire insulation.
- Do not cover the product with cloth, paper, or any material not part of the product when in use.
- This product is equipped with push-in type lamps.
- Do not operate this product with lamps missing from sockets. Missing lamps should be replaced promptly.
- Risk of fire: This product does not contain lamp shunts which allow the product to operate if one lamp burns out. Replace lamps only with the spare lamps provided with this product.
- DO NOT EXCEED THE MAXIMUM EXTENSION LENGTH IN FEET PERMITTED BY THE MARKING.** The maximum extension length for this string light is 48 feet or 2 units.

## SAVE THESE INSTRUCTIONS

**⚠ WARNING:** This product can expose you to chemicals including Lead, which is known to the State of California to cause Cancer, birth defects or other reproductive harm. For more information go to [www.P65Warnings.ca.gov](http://www.P65Warnings.ca.gov).

## PREPARATION

Before beginning assembly, installation, or operation of product, make sure all parts are present. Compare parts with package and hardware contents lists on page 1. If any part is missing or damaged, do not attempt to assemble, install or operate the product. Contact customer service for replacement parts.

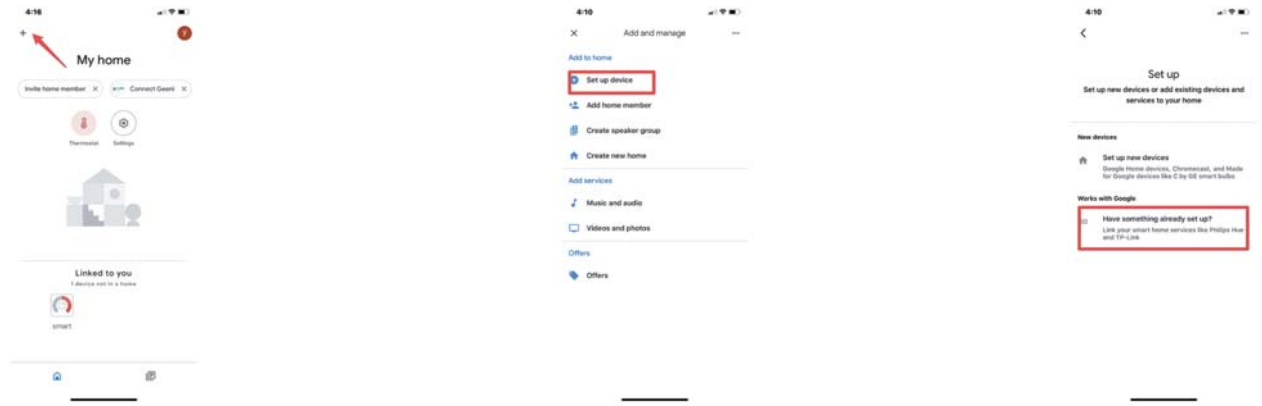
Tools Required for Assembly (not included): Phillips Screwdriver, Safety Glasses, Ladder, Supporting hardware (eyebolts or brackets).  
 Estimated assembly time: 20 minutes

## Quick Guide of Using Google Home to Control Smart Devices

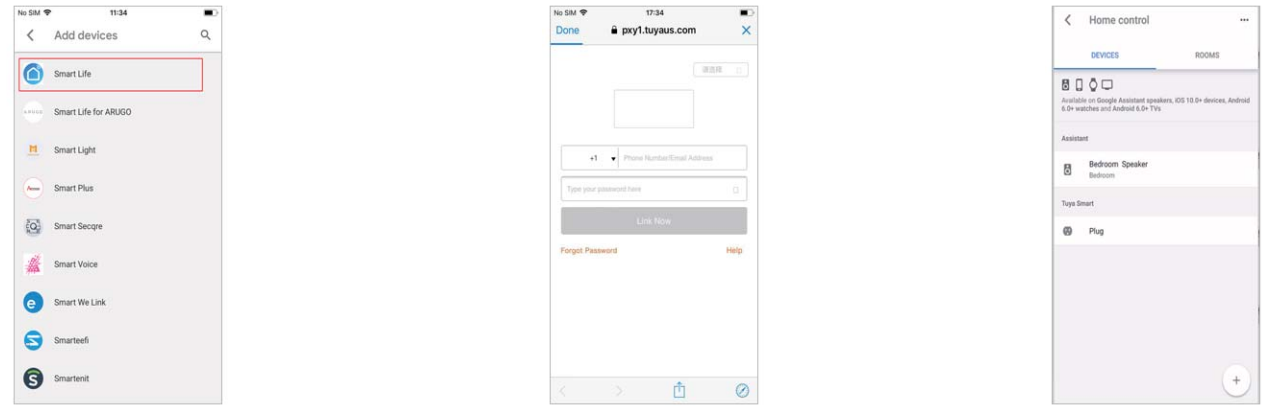
### 3.2. Link Smart Life account in Home Control

Attention: Due to the Google Home App's known bug, you could only use one Google account to control "Home Control Action". If you sign in Google Home App with several Google accounts, only the first Google account you signed in can be used for "Home Control".

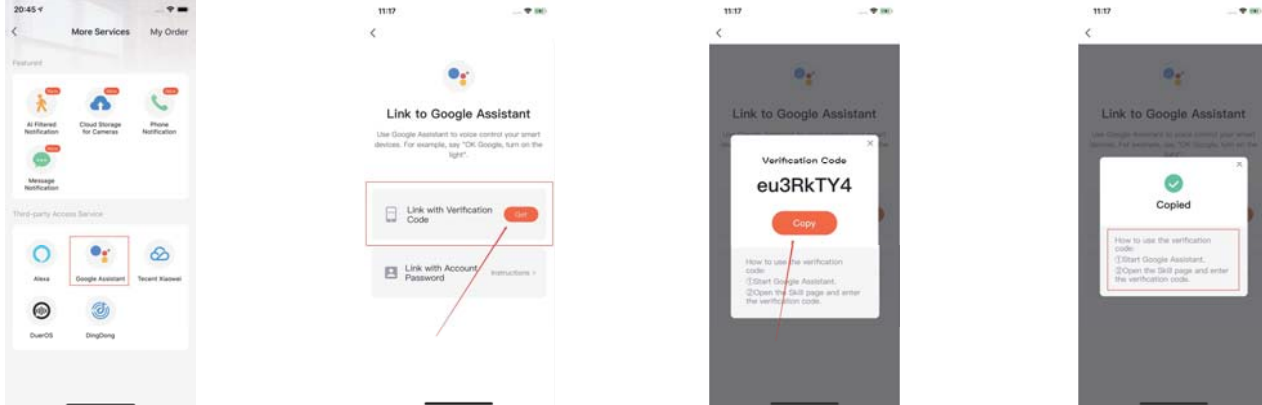
1. On the homepage of Google Home App, click the button in the higher left corner, select "+", select "Set up device" under the list of "Add and manage", and then click "Have something already set up".



2. Find "Smart Life" in the list. In the new window, select your Smart Life account's region, type your Smart Life account and password, then tap "Link Now". After you assign rooms for devices, your devices will be listed in the Home Control page.



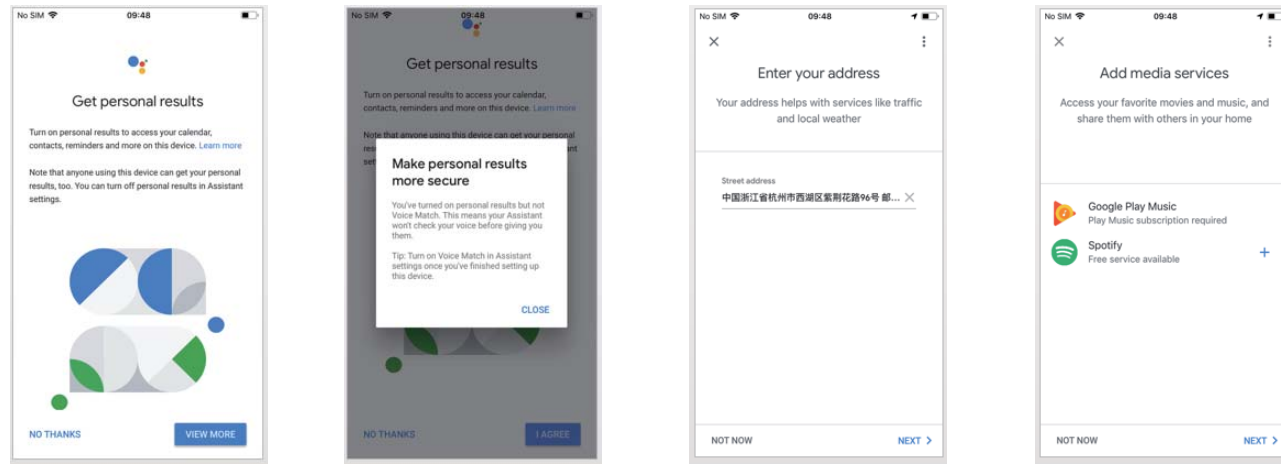
3. Link with Verification Code, open Smart life APP, click "Me—More Services—Google Assistant".



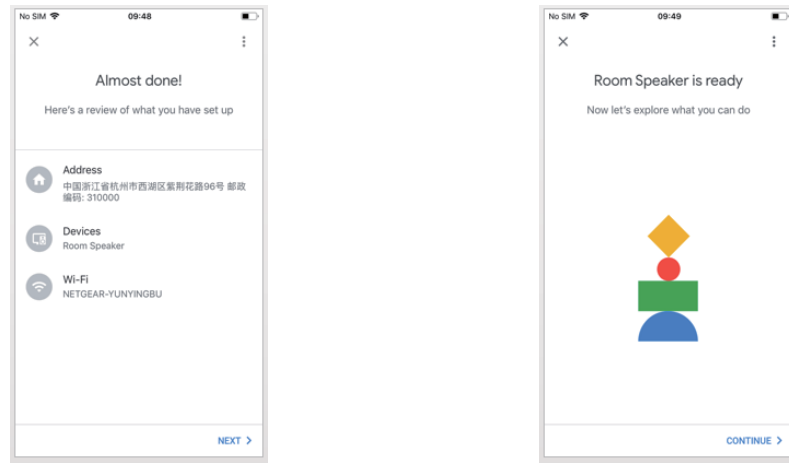
4. **Control your smart devices through Google Home**  
 Now you can control your smart devices through Google Home.

## Quick Guide of Using Google Home to Control Smart Devices

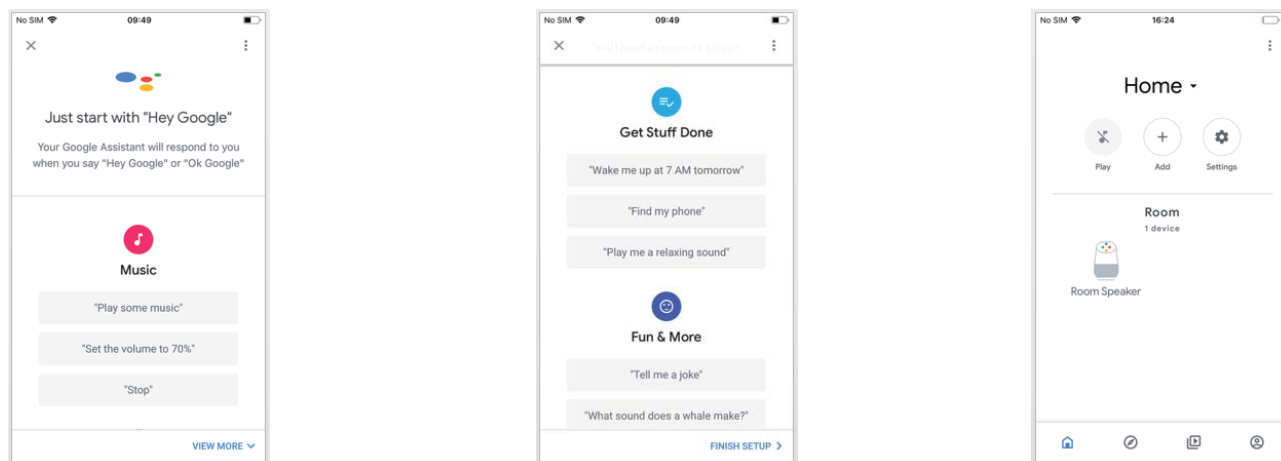
11. Click “VIEW MORE” to pop up a dialog box, and then click “I AGREE” to allow Google Home to get your calendar, flight itinerary, and more to provide personalized customization. Then set your geographic location, select the music service you need, and click on “NEXT”. If you don’t need it, you can click “Not Now” to skip.



12. Then comes a review of what you have done. After clicking “Next” the page will display “Google Home is ready”. At this point, Google Home’s setup is complete.



13. This step is the voice control tutorial, click “FINISH SET UP”. Then the speaker that have been connected successfully will display in the “Home” page.

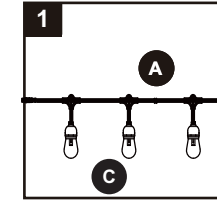


## INSTALLATION INSTRUCTIONS

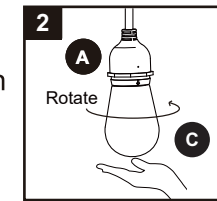
### WARNING

- Disconnect power at the source prior to beginning installation or servicing product.
- Be careful not to damage or cut the wire insulation (covering) during fixture installation. Do not permit power cord or wires to contact any surface having a sharp edge. To do so may damage or cut the wire insulation, which could cause serious injury or death from electric shock.
- String light sockets must be suspended so that lamps are facing downwards. **DO NOT** mount the light string with sockets facing upward. Lamps should hang freely with at least 3 inches of space from nearest object.

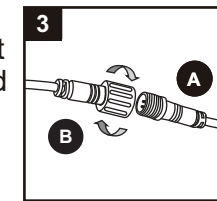
1. Carefully remove all the parts from the packaging, and gently lay them out on a smooth workspace. Remove the packing material and uncoil the string light (A). Be careful not to cut or nick the string nor damage the pre-attached lamps.



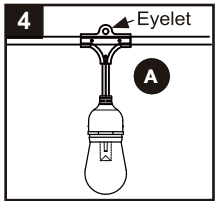
2. Ensure all 12 of the pre-attached lamps are securely affixed to each of the string light’s (A) sockets by gently turning each lamp (C) clockwise. Do not over-turn.



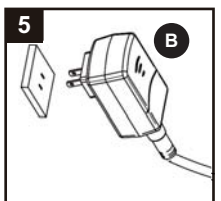
3. Connect the 12V plug-in power supply with adaptor (B) to the light string (A) by pushing the male and female end connections together, then tightening the screw-on connection cover.



4. Securely attach string light (A) to a support structure using the eyelet holes at the top of each suspended socket and appropriate supporting hardware (eyebolts, brackets, etc. not included).

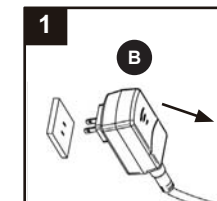


5. Plug-in power supply with adaptor (B) to an appropriate power outlet.

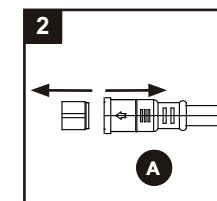


## EXTENDING THE SERIES

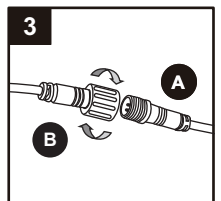
1. Ensure that all string lights (A) are unplugged before adding additional string light (A) segments to the series.



2. Remove the end cap from the last string light (A) in the series by unscrewing the plastic end cap.



3. Connect two string lights together by pushing the male and female end connections together, then tightening the screw-on connection cover. Ensure the new last string in the series still has its end cap attached.

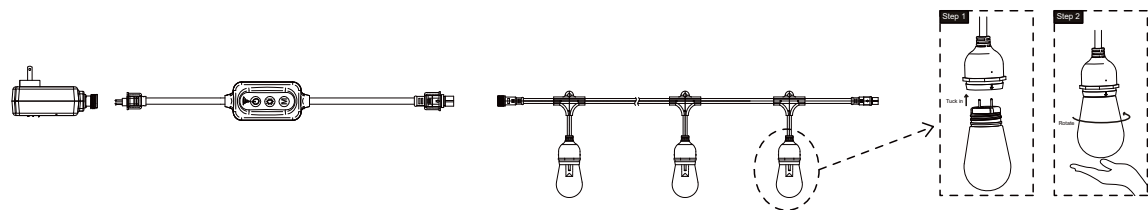


## CARE AND MAINTENANCE

- When the product is placed on a live tree, the tree should be well maintained and fresh. Do not place on live trees in which the needles are brown and break off easily.
- If the product is placed on a tree, the tree should be well secured and stable.
- Before using or reusing, inspect product carefully. Discard any products that have cut, damaged, or frayed wire insulation or cords, cracks in the lamp-holders or enclosures, loose connections, or exposed copper wire.
- When storing the product, carefully remove the product from wherever it is placed, including trees, branches, or bushes in order to avoid any undue strain or stress on the product conductors, connections, and wires.
- When not in use, store neatly in a cool, dry location protected from sunlight.
- Use only a mild soap and/or water with a soft cloth to clean the fixture. Harsh chemicals will damage the fixture. Do not wipe the fixture with a rough cloth that may scratch the finish or the lens.

## TROUBLESHOOTING

- 1) The light does not come on at all:
  - a) Make sure the wall switch and circuit breaker are on.
- 2) One of the lamps has burned out.
  - a) Disconnect power to the string light. Remove effected lamp by gently gripping lamp and then turning in a counter-clockwise direction. Replace lamps only with 12V, 0.75W S14 lamps provided. Align the groove on the socket with the bolt on the lamp, then gently insert the lamp into the socket. Turn the lamp in a clockwise direction until fully seated.



## FCC Compliance Statement

This device complies with part 15 of the FCC Rules. Operation is subject to the following two conditions:

1. This device may not cause harmful interference, and
2. This device must accept any interference received, including interference that may cause undesired operation.

## FCC WARNING

This equipment has been tested and found to comply with the limits for a Class B digital device, pursuant to Part 15 of the FCC Rules. These limits are designed to provide reasonable protection against harmful interference in a residential installation. This equipment generates, uses and can radiate radio frequency energy and, if not installed and used in accordance with the instructions, may cause harmful interference to radio communications. However, there is no guarantee that interference will not occur in a particular installation. If this equipment does cause harmful interference to radio or television reception, which can be determined by turning the equipment off and on, the user is encouraged to try to correct the interference by one or more of the following measures:

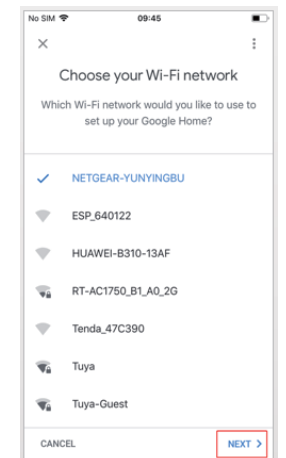
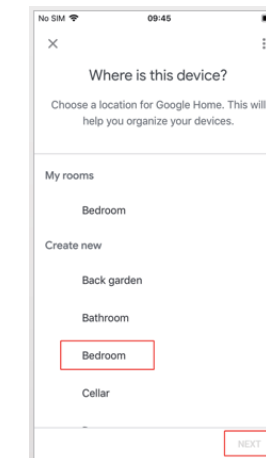
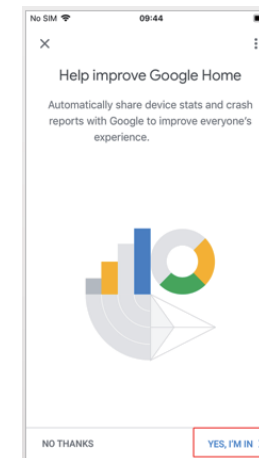
- Reorient or relocate the receiving antenna.
- Increase the separation between the equipment and the receiver.
- Connect the equipment into an outlet different from that to which the receiver is connected.
- Consult the dealer or an experienced radio/TV technician for help.

**CAUTION:** Changes or modifications not expressly approved by the party responsible for compliance could void the user's authority to operate the equipment.

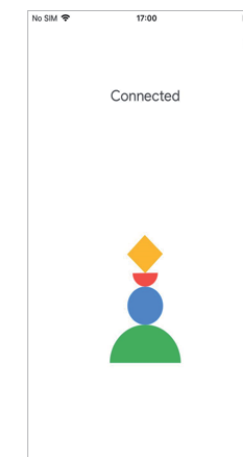
**Radiation Exposure Statement:** To maintain compliance with FCC's RF Exposure guidelines, This equipment should be installed and operated with minimum 20cm distance between the radiator and your body: Use only the supplied antenna.

## Quick Guide of Using Google Home to Control Smart Devices

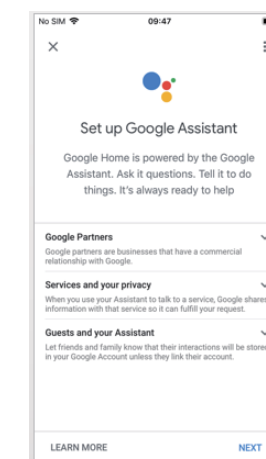
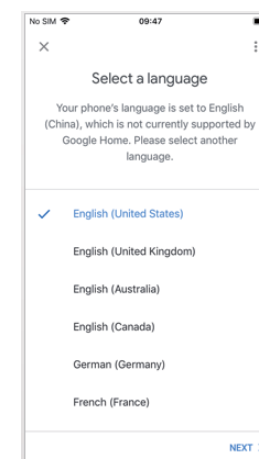
5. Help improve Google Home and click "YES, I'M IN" in the lower right corner.
6. Choose a location for Google Home, for example, choose "bedroom".
7. Choose your WI-FI network to set up your Google Home.



8. After successfully connected, the App page will display as follows.



9. Select a language, then click "Next".
10. Waiting for the system to set up your Google Assistant automatically, click "Next".



### 1. What you need to get started

Before using Google Home to control your devices, make sure you meet the following conditions.

- A Google Home device, or Android phone with Google Assistant.
- Latest Google Home App.
- Latest Google App (Android only)
- A Google account.
- The device display language must be set to English US.
- Smart Life App and a related account.
- Smart devices.

### 2. Add devices in Smart Life App (Refer to App Instruction)

You can skip this part if you've already add some devices to your Smart Life account, and in the meantime the devices' name are easily recognized.

#### 2.1. Download Smart Life App (Refer to App Instruction)

You can scan the QR code below to download the Smart Life App:



You can also search "Smart Life" in either App Store or Google Play to install the App.

**Note:** "smart life" App is just a App name (for example), you can download your App.

#### 2.2. Register a Smart life account and sign in the App (Refer to App Instruction)

Open the Smart Life App, tap "Register" to register an account, then sign in the App.

#### 2.3. Add device and change device's name (Refer to App Instruction)

Sign in with the Smart Life account, add the device, then change device name to a easily recognized word or phrase, like "bedroom light".

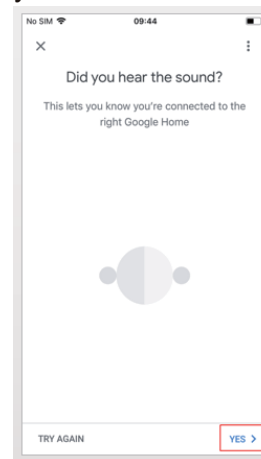
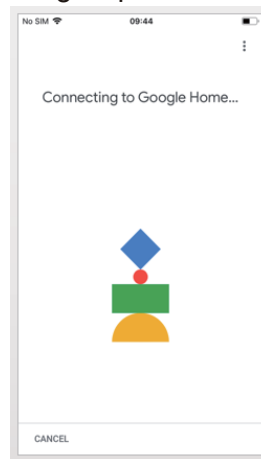
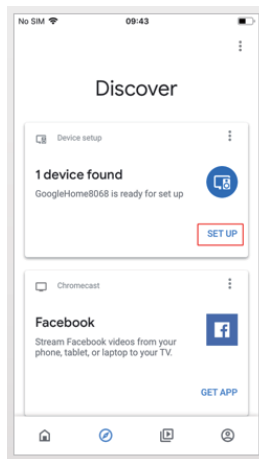
### 3. Set up Google Home and configure in Home Control

Configuration needs Google Home App. Search "Google Home" in App Store or Google Play to install the App.

#### 3.1. Set up Google Home with Google Home App

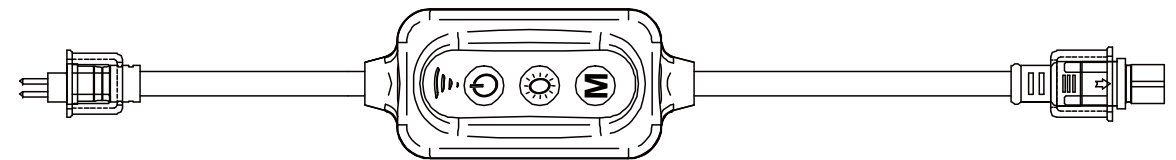
You can skip this part if your Google Home is already set up.

1. Make sure your Google Home is energized and four colored lights on the top are on which means that it is in a state of waiting for a connection.
2. Make sure Google Home is in a Wi-Fi network that has smooth access to Google services.
3. Open the Google Home App, the device will automatically Appear in the "Discover" page.
4. Click "SET UP" to start connecting to Google speakers and click "YES" after you hear the voice prompts.



The default setting of the WIFI controller is 3 buttons fuction in the sequence of RGBW (sequence RGB for RGB version). If you want to switch to the different mode, follow the steps below:

- a.) Ensure controller is connect up with the light string and link up with the adaptor, Keep the Light String working with power on.
- b.) Button 1, ON/OFF, Press and keep 3 seconds, and two different configuration modes will appear. In the first mode, press for 3 seconds, and the light String will present a warm white flashes quickly, and then enter EZ distribution network state. After the connection is successful, you can see connected light string name on your phone. Second mode: Press 3 seconds again, and the light String will flash slowly with warm white light. If you failed to connect when the light String flashes quickly, then you may be able to apply the second mode. Try connecting the two modes several times, and there is always one that works for your current network environment. Note: The first configuration pattern is the most commonly used pattern.
- c.) Button 2, Color changing (Red, Green, Blue, Warm White, Pink, Purple, Orange, Yellow), You can select a color you like in 7 colors.
- d.) Button 3, there are 4 modes in here. Horse race, Meteor, Pulse, Flash, you can choose any mode you like and enjoy it.



### TROUBLESHOOTING

- The light does not come on at all:
  - a) Make sure the circuit breaker is on and that switch controlling branch circuit is on.
- To reset the smart light to factory settings:
  - a) Power the light on and off 4 times in succession: On for 5 seconds, then Off for 3 seconds.
- If the smart light device does not respond to commands
  - a) Check the status by selecting the settings gear wheel from the home screen, then selecting "Device Manager". Both icons shown should be blue. If not, try reconnecting the device.
- The Wifi signal emitted by the smart light device is not connected to the internet.
  - a) The goal of setup is to get the control device (phone or tablet), the smart light device, and/or auxiliary smart speaker on the same local Wifi network.
- Smart device won't find the Wifi signal of the smart light.
  - a) Check if the string light has been connected with the router while also checking the WiFi connection of the smart device.
- The smart light will not connect with the router.
  - a) Ensure the correct password is being used.
  - b) Disconnect power to the smart light and the router then shut down the app. Restart the router, followed by the smart light 30 seconds later. Wait 2 minutes before restarting the app.
- The App is not recognizing the smart light after choosing the Wifi signal
  - a) Refresh the app device list by sliding down on the screen.
  - b) Try disabling the Wifi connection on your smart device, wait a few minutes, then try again.

If these suggestions do not fix the issue, please consult a certified electrician.



### 1. What you need to get started

- ◆ Before using Echo to control your smart devices, make sure you meet the following conditions.
  - Stable Wi-Fi network which could access to Amazon server.
  - An Echo device, including Echo, Echo Tap, or Echo Dot.
  - An Amazon account.

### 2. Add devices in Smart Life app (Refer to App Instruction)

◆ You can skip this part if you've already add some devices to your Smart Life account, and in the meantime the devices' name are easily recognized.

#### 2.1. Download Smart Life app (Refer to App Instruction)

You can scan the QR code below to download the Smart Life app:



You can also search "Smart Life" in either App Store or Google Play to install the app.

#### 2.2. Register a Smart life account and sign in the app (Refer to App Instruction)

Open the Smart Life app, tap "Register" to register an account, then sign in the app.

#### 2.3. Add device and change device's name (Refer to App Instruction)

- Sign in with the Smart Life account, add the device, then change device name to a easily recognized.
- For the first time, the distribution network should plug the power switch 3 times until the color of the lamp turns white and flashes.

1.Click Add Device



2.Click on Lighting WIFI Products



3.Enter WIFI password or click auto find device



4.Confirm the flashing status of the lamp



5.Until automatic completion



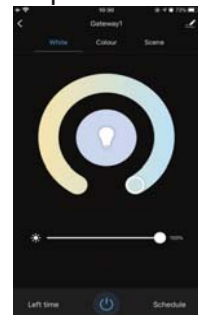
6.Find the device and click Done



7.Change the device name to an easily appropriate name

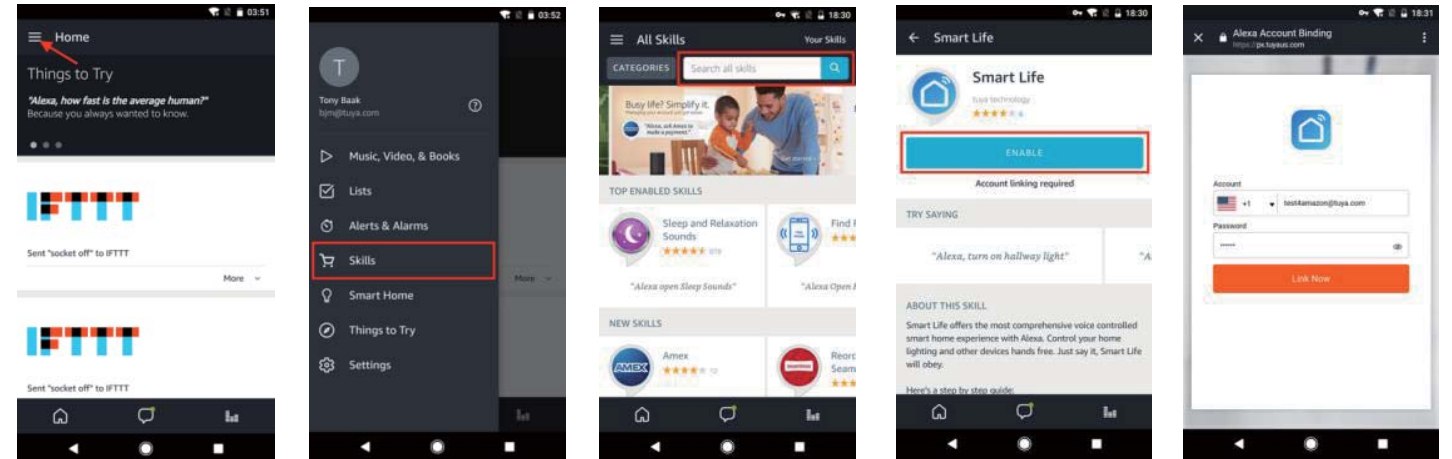


8.Get started with the lamp after finish



### 3. Link Smart Life account to Alexa

Tap "Skills" in the hamburger menu, then search "Smart Life". Select "Smart Life" and tap "ENABLE" to enable the Skill.

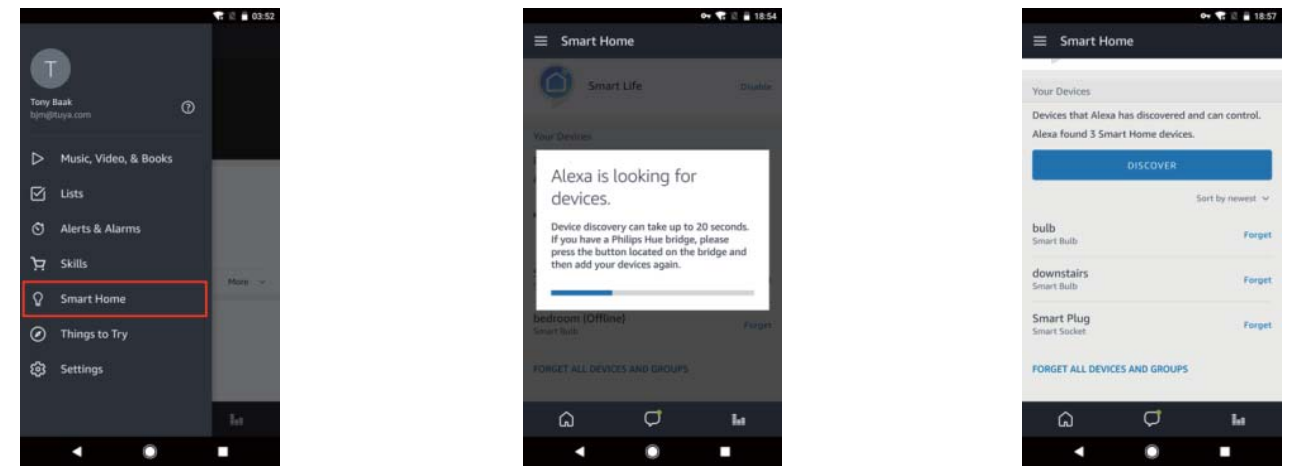


You will be redirected to the account link page. Type in your Smart Life account and password, don't forget to select the country/region where your account belongs to. Then tap "Link Now" to link your Smart Life account. The country/region, the account, and the password must match with the exact content in Step 2.2.

### 4. Control your smart devices through Echo

#### 4.1. Discover devices

Echo needs to discover your smart devices before it controls them. You can say "Alexa, discover devices" to Echo. Echo will discover devices which have already been added in the Smart Life app. You can also tap "DISCOVER" to discover the smart devices. Discovered devices will be shown in the list.



◆ Note: every time you change the device's name on Smart Life app, Echo must re-discover before you control them.

#### 4.2. Control devices by voice commands

Now you can control your smart devices through Echo.