

User Manual

Product Name: TWS bluetooth earbuds

Brand: ARCHEAN

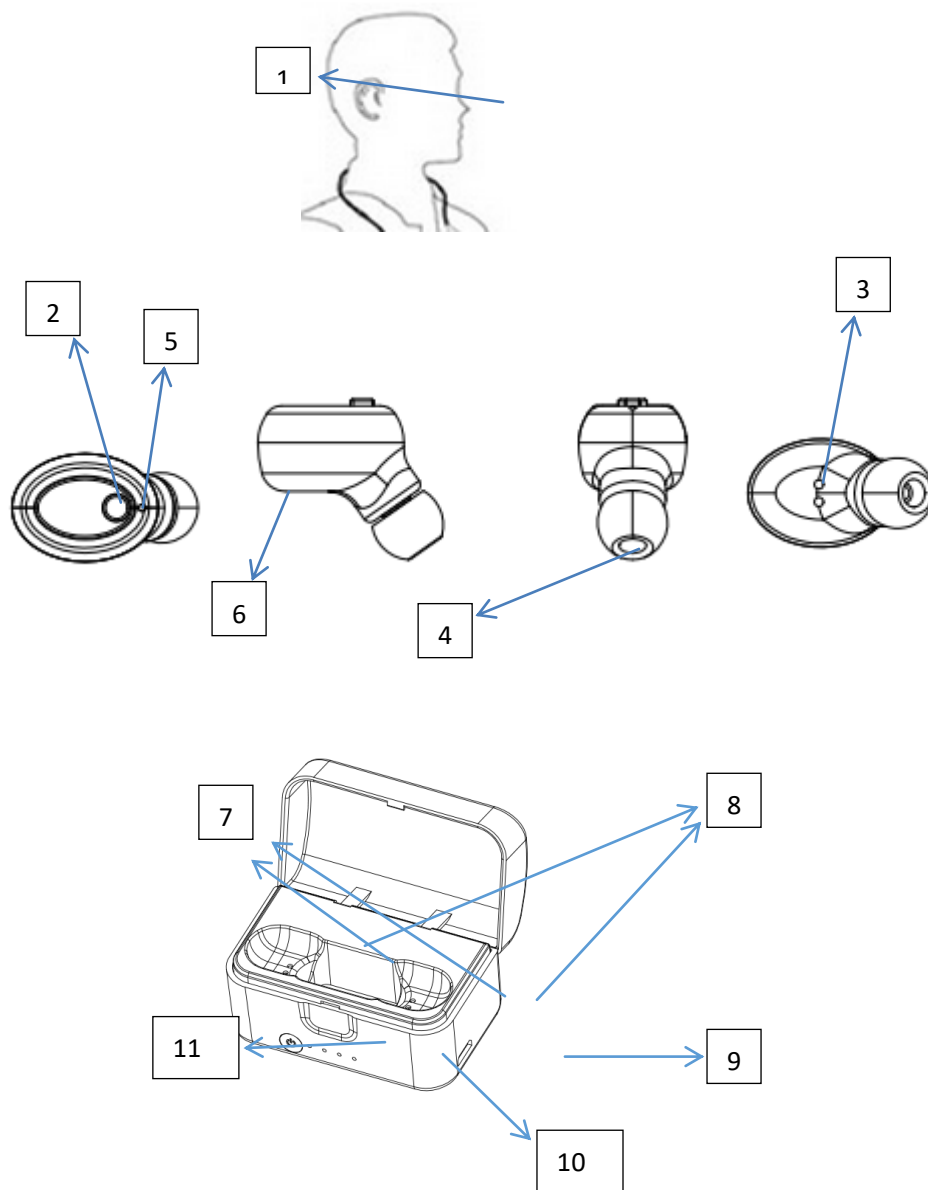
Model: GS-TWS R

Manufacture: Shenzhen Yinhuang Electronics Technology Co.,

Ltd

Thank you for selecting double-ear true wireless and true stereo magnetic type bluetooth earphone. This user manual will show correct use of the bluetooth earphone and performance parameters to you.

1. Part name and comfortable wearing mode



1. The best invisible position for wearing (auricular fossa of left and right ears);
2. Multiple-function key includes (power on key/answering key/power off key/music pause and play/number redialing, hold down the accessory earphone for two seconds, etc);
3. Contactor for charging
4. Earmuff position
5. LED Indicator light
6. The hidden magnet position of the host position
7. Charging thimble
8. The hidden magnet position of the charging base;
9. USB charging port
10. Indicator light of charging case.
11. Switch of the charging case.

Brief description:

Switch on the bluetooth earphone by holding down the key for about 3 seconds and release until voice prompt appears. It will connect with the last paired mobile phone automatically.

Automatic connection:

Once your mobile phone is paired successfully with your earphone, when you power on again, the last mobile phone will be connected automatically. But some mobile phones require authorization to input "0000" for connection. This is determined according to your mobile phone.

Manual connection may be adopted if automatic connection is not performed after disconnection.

After your mobile phone is paired with earphone successfully, if it is disconnected out of the use scope without restarting the power supply, press the multiple function key to make connection with the last mobile phone.

2. Introduction for use

2.1. Power on connection of main and accessory earphones.

When the new earphone is used for the first time, use your hand to hold down multiple-function key 2. When LED indicator light 5 flashes red and blue alternately, this indicates that it enters the pairing mode. Fixed as main earphone, carry out double clicks on one of them and set it as main earphone manually under the state that the main earphone and accessory earphone are not connected.

◆ 1. Switch on the mobile phone Bluetooth to search new equipment and find the corresponding earphone symbol and select connection. For some mobile phones, the pairing password "0000" is required during the pairing process due to compatibility for normal pairing.

◆ After use for one time after pairing, as long as the earphone is not paired with other equipment or the pairing data of the device is not deleted, at any stage of power on, it can be connected with the equipment for use

Note: When operation for pairing is used for the first time, before the main earphone and accessory earphone are connected successfully, don't use mobile phone to search and connect.

2.2. Single and independent use of power-on pairing and connection

◆ When a new earphone is used for the first time, use your hand to press multiple-function key 2. It indicates to enter the pairing mode when LED indicator light 5 of left and right earphones flash with red and blue alternately.

◆ 1. Switch on the mobile phone Bluetooth to search new equipment and find the corresponding earphone symbol and select connection. For some mobile phones, the pairing password "0000" is required during the pairing process due to compatibility for normal pairing.

◆ After use for one time after pairing, as long as the earphone is not paired with other equipment or the pairing data of the device is not deleted, at any stage of power on, it can be connected with the equipment for use.

2.3. Charging of earphone

The red light is normally on during the charging process. After completion of charging, the blue light is normally on. Generally, the saturation time is 5 minutes after the blue light is on. After it is saturated completely, the power bank will identify automatically and close the power supply to enter dormant state. To activate the dormant state, press the switch of power bank, i.e., mark 11 manually or take out the earphone and put it in again.

2.4. Charging with charging case

Insert micro5p charging line on a computer or other USB to charge with the power bank. The voltage of charging equipment is limited below DC5V and the current is limited to 500MA~2A. Charging with equipment exceeding the standard will affect the service life or bring damage directly.

3. Main functions

3.1. Power-on pairing: Hold down 2; pairing begins when the red and blue lamps flash alternately;

Power off: Hold down 2 and it powers off after prompting to switch off.

Play/pause: Press 2;

Answer/hang up: Press 2;

The following is the list of measured function.

1. MFB Key (2)	Power on	Hold down for 3-5 seconds
	Power off	Hold down for 3-5 seconds
	Play/pause the music	Single click
	Next song	Double click the right (R) earbud
	Previous song	Double click the left (L) earbud
	The state to be paired	Hold down for 5 seconds
	Answer/hang up	Single click
2. LED indicator light	Power on	Blue
	Power off	Red
	The state to be paired	Red and blue flashes alternately
	Connected	Light off
	earphone charging	The Red light is on during the charging process. The blue light is normally on after full charging. At the saturation state, power bank closes automatically and hibernates.
	Charge with power bank.	During the charging process, the blue light flashes from left to right. It is saturated when four LED lights are on.

Take apple mobile phone as an example for switching of answering sound source of some mobile phones and earphones. The answering source of key on the mobile phone is the telephone receiver of the mobile phone. The sound source may be switched to the earphone on mobile phone screen after the telephone is connected.

4. Technical parameters

The product adopts AB1526P true stereo Bluetooth chipset and efficient stereo Bluetooth transmission scheme. This provides high quality sound and compatibility to perform music transmission to enjoy the pleasure brought by music.

This module is mainly used for short distance music and talking.

Basic characteristics:

1. Version: V4.0+EDR/4.0
2. Battery parameters: 50MA
3. Standby current: $\leq 1\text{MA}$
4. Working current: $\leq 15\text{MA}$
5. Signal distance ≥ 10 meters;

6. Music time: Main earphone: 3 hours; accessory earphone: 4 hours.

7. Talking time: About 4-6 hours

Function and characteristics:

1. Bluetooth stereo play, compatible mobile phone, flat computer and all types of Bluetooth equipment.
2. Bluetooth hand free talking, support the function echo elimination.
3. Built-in charging function
4. Built-in jogging switch on/off.

5. Description

5.1. Warranty period: The quality warranty period of the product is 12 months from the purchase date. Gifts and donation do not enjoy the service.

5.2. Free service: Within the warranty period, for failure caused by quality, you may enjoy free repair by contacting the distributors with the proof of purchase.

Free repair will not be provided for the following conditions:

- ◆ Damage caused by dismantling without permission;
- ◆ Due to entry of water or stored at a damp environment.
- ◆ Damage or failure caused by force majeure.

6. Warm prompt

If the device you purchase is not the accessory of the factory or damaged due to improper use, dismantling without permission or artificial factors or non-conformity of the supply voltage, it is not within the scope of warranty.

FCC Caution.

This device complies with part 15 of the FCC Rules. Operation is subject to the following two conditions:

- (1) This device may not cause harmful interference, and
- (2) this device must accept any interference received, including interference that may cause undesired operation.

Any Changes or modifications not expressly approved by the party responsible for compliance could void the user's authority to operate the equipment.

Note: This equipment has been tested and found to comply with the limits for a Class B digital device, pursuant to part 15 of the FCC Rules. These limits are designed to provide reasonable protection against harmful interference in a residential installation. This equipment generates uses and can radiate radio frequency energy and, if not installed and used in accordance with the instructions, may cause harmful interference to radio communications. However, there is no guarantee that interference will not occur in a particular installation. If this equipment does cause harmful interference to radio or television reception, which can be determined by turning the equipment off and on, the user is encouraged to try to correct the interference by one or more of the following measures:

- Reorient or relocate the receiving antenna.
- Increase the separation between the equipment and receiver.
- Connect the equipment into an outlet on a circuit different from that to which the receiver is connected.
- Consult the dealer or an experienced radio/TV technician for help.

The device has been evaluated to meet general RF exposure requirement. The device can be used in portable exposure condition without restriction.