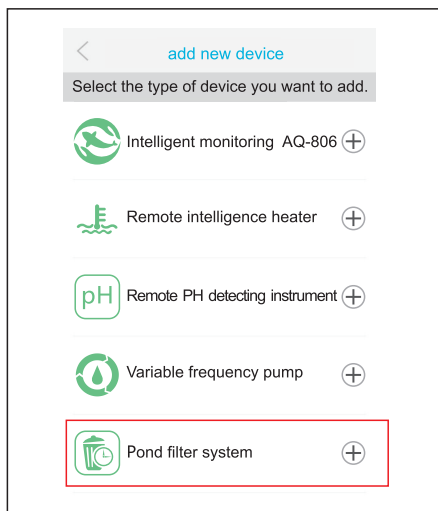
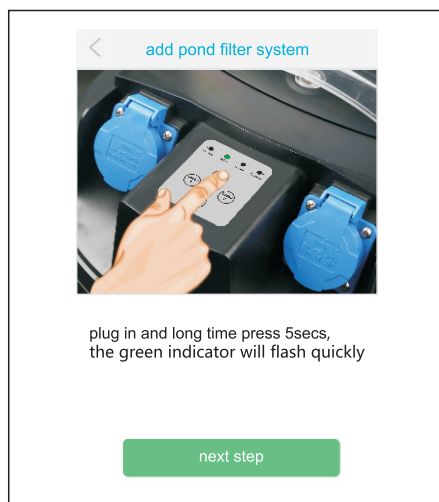


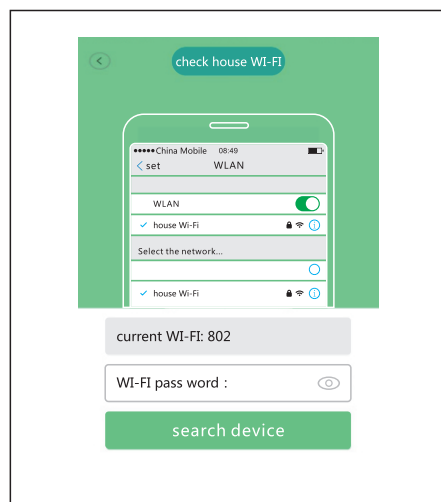
3. Open "Smart Xiaoli SUNSUN "APP and click"add new device".



4. Click"pond filter system", and choose One key match.



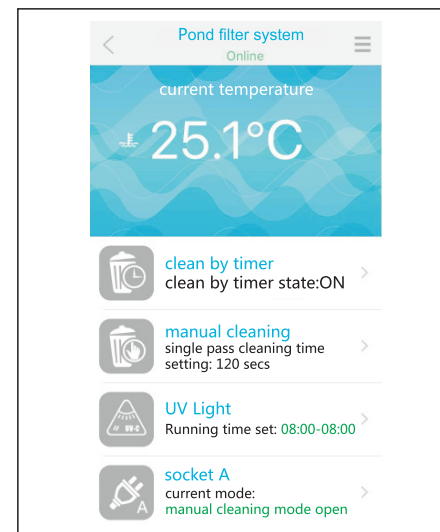
5. Connect the power supply of the device, and press the "WiFi" button for 5 seconds until the WiFi flash quickly. Click on the "next step"on the APP.



6. Click on the "search device" after entering the current WIFI password.



7. Wait a moment, and click on the "next step" when the display show the device has been added successfully.



8. Enter the device operation interface after adding completely.

APP OPERATION GUIDE

WIFI connection state

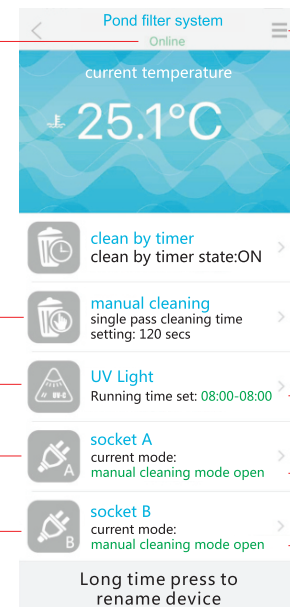
Set up the equipment

The setting of manual cleaning

The setting of UV light

The setting of socket A

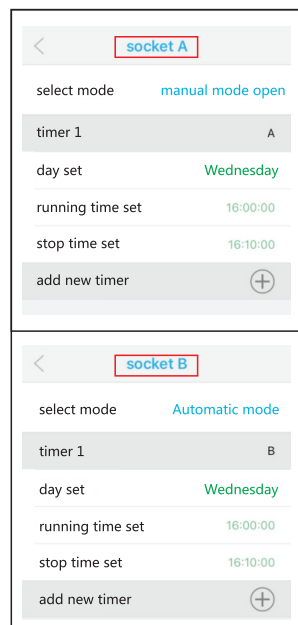
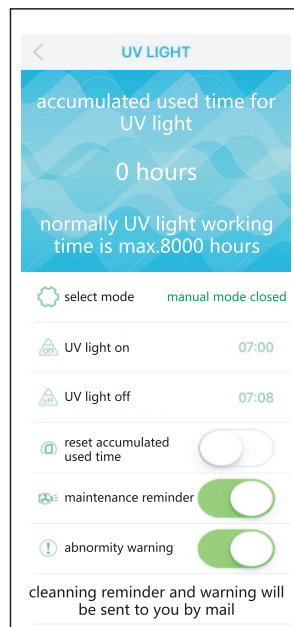
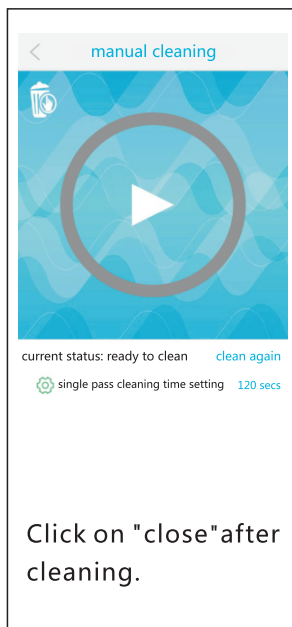
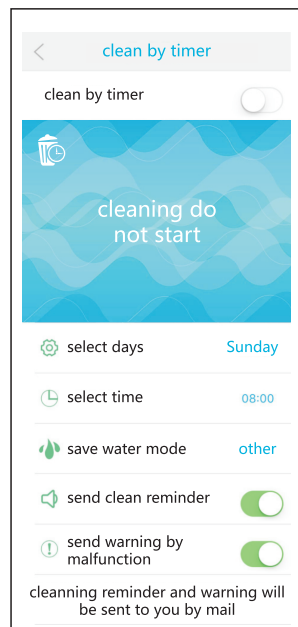
The setting of socket B



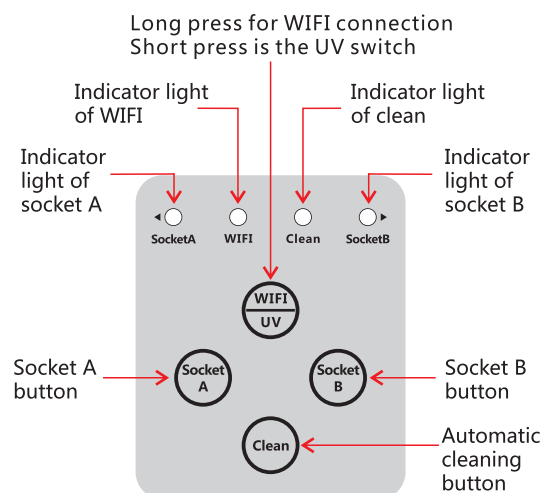
Working time

The state of socket A

The state of socket B



Operation of filter



◆ REPLACEMENT OF SPONGES ◆

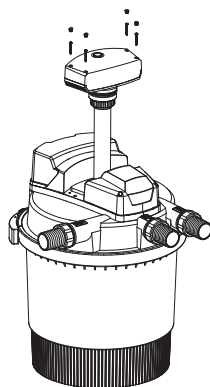
If the water flow is too small due to dirty filter sponges and can not be improved through the automatic clean. The filter sponges must be washed or replaced.

Please do not use any chemical cleaning agents so as not to kill off the microorganisms in the filter sponges.

1. Disconnect the mains plug of the filter.
2. Switch off the pump and ensure that it cannot be switched on unintentionally, remove all hoses by unscrewing the union nuts.
3. Remove protective buckle, then open the clamp.
4. Lift off the lid with the filter sponge assembly. Place the lid upside down on another clean surface. The filter sponges are lying with filter plat facing up.
5. Remove the diversion pipe anticlockwise, remove the screws on the gear and the separate plate.
6. Remove the filter sponges to replace or clean.
7. Pull off the filter sponges part and clean them under flowing water. Give the filter sponges a good squeeze.
8. Clean the container, filter sponges, O-ring 3 and the edge of the container by spraying them with a water hose.
9. Put the sponge part as follow, put on the sponge plate, fixed cleanness gear set, fasten the diversion pipe.
10. Place the O-ring 3 onto the upper edge of the container.(In order to easy to fit you should make it wet). Press down on the lid.
11. Put the clamp on the right place, pull on the pull-tab , finally push the safety latch in.
12. Fasten all hoses with flat seals or flow vane to the corresponding connection by screwing the union nuts on tight.
13. Start the pressure filter up again.

◆ REPLACEMENT OF UV LAMP ◆

1. Unscrew the four screws on the lid.
2. Pull out of the UV head, then you can clean the quartz glass tube.
3. Clean the quartz glass tube with wet cloth.
4. Remove the fixing-nut on the quartz glass tube.
5. Pull out of the quartz glass tube then you can replace the UV lamp.
6. Check the quartz glass tube set, change it if broken.
7. Set up all part of the filter as before and start up the filter again.



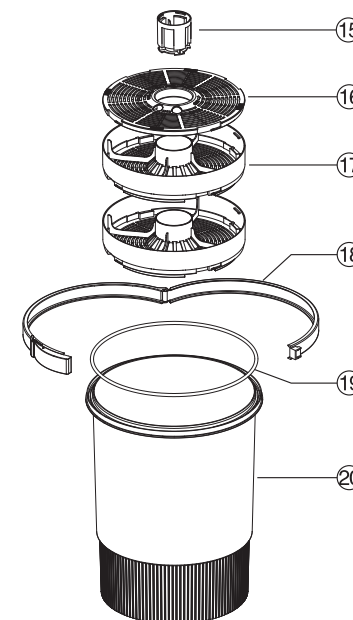
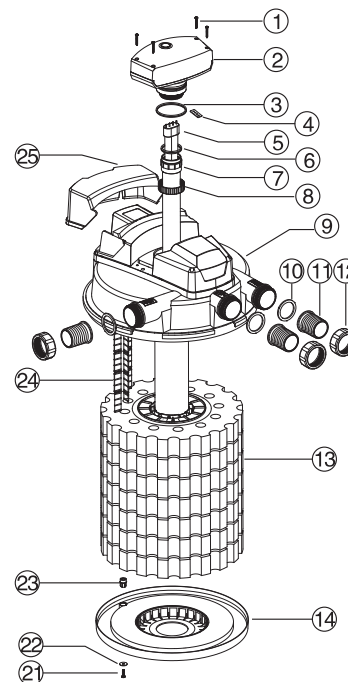
◆ WEARING PARTS ◆

UV light, quartz glass tube, filter sponge, O-ring

◆ PARAMETER ◆

Model	CPW-20000	CPW-30000	CPW-50000	CPW-75000
Smart socket Maximum total power	≤800W	≤800W	≤800W	≤800W
Power of UV-C	36W	55W	55W	55W
Max flow-through(L/h)	12000L/h	12000L/h	13000L/h	13000L/h
Outlet/Inlet hose adapter	1 1/4"~1 1/2"~2"	1 1/4"~1 1/2"~2"	1 1/4"~1 1/2"~2"	1 1/4"~1 1/2"~2"
Strainer surface	60m ²	80m ²	80m ²	80m ²
Suitable for ponds with fish	20m ³	30m ³	40m ³	50m ³
Suitable for decorative ponds	40m ³	60m ³	80m ³	100m ³
Actual volume	50L	75L	170L	300L
Dimension in mm	458×458×600	458×458×765	620×620×920	750×750×970

◆ PART LIST ◆



1	Screw 1#	6	O-ring 2	11	Inlet&Outlet	16	Filter basket cover	21	Screw 2#
2	UV head	7	Quartz glass tube set	12	Inlet&Outlet fixing nut	17	Filter basket	22	Washer
3	O-ring 1	8	Fixing-nut	13	Sponge	18	Clamp	23	Down bearing
4	Rubber seal	9	Lid	14	Sponge plate	19	O-ring 3	24	Clean gear set
5	UV lamp	10	Gasket	15	Diversion pipe	20	Container	25	Socket cover