

◆ 过滤棉的更换 ◆

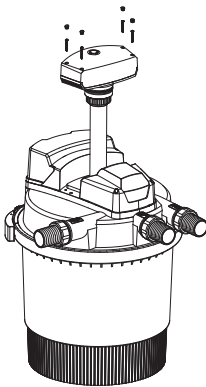
若因过滤棉受到污染而使流量减少，且通过自动清洁也未能根本改变现状，便应彻底清洗或更换过滤棉。

切勿使用化学清洁剂，以免杀死过滤棉中的微生物。

- 1. 拔去水泵和过滤器电源。
- 2. 逆时针转动松开进出水口螺母，拆下所有软管。
- 3. 拉开紧固环上的防护扣，取下紧固环。
- 4. 提起整个桶盖，翻过来放在一个干净的软垫上。
- 5. 逆时针转动拆下导流管，卸下清洁齿轮上的螺丝，再拆下隔板。
- 6. 取出过滤棉进行清洗或更换。
- 7. 可通过按压过滤棉压板的方式来清洁过滤棉。
- 8. 用强水柱冲洗桶盖内部，过滤棉组件，O型圈3，桶体边缘处。
- 9. 换上过滤棉组件，装上隔板，固定好清洁齿轮组件，拧紧导流管。
- 10. 把O型圈3放在桶体上边缘，盖上桶盖，压紧桶盖。
- 11. 装上紧固环，扣上拉环，再扣上防护扣。
- 12. 连接上所有软管。
- 13. 重新启动水泵和过滤器。

◆ 石英管的更换 ◆

- 1. 用十字螺丝刀拧开灯头上的4枚螺丝。
- 2. 将灯头组件向上拔出。
- 3. 用湿布清洁石英玻璃管。
- 4. 松开石英管上的紧固螺母。
- 5. 拔出石英玻璃管，更换灯管。
- 6. 检查石英玻璃管和密封圈是否损坏，必要时更换。
- 7. 按照原样装上灯头组件。



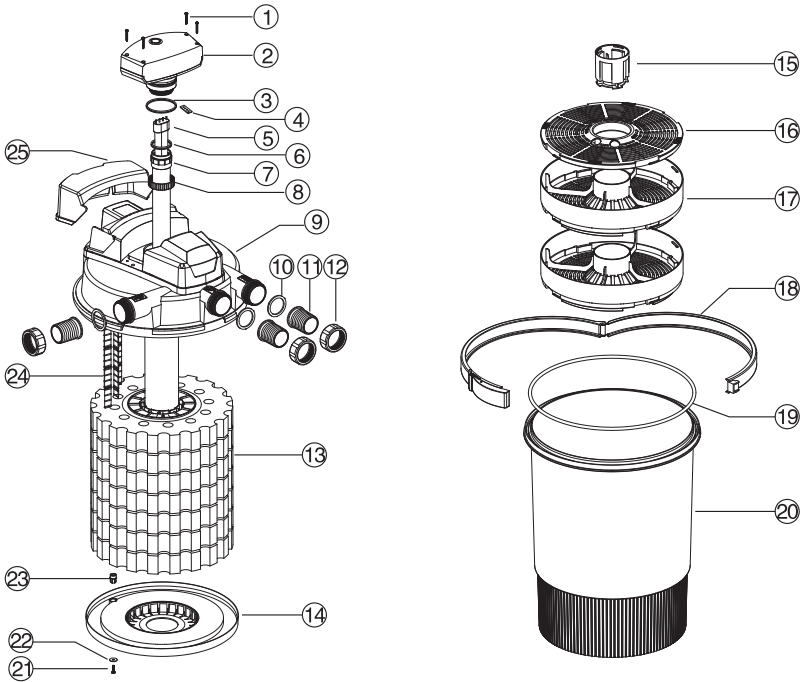
◆ 易损件 ◆

UV灯管，石英玻璃管，过滤棉，O型圈

◆ 参数 ◆

型号	CPW-20000	CPW-30000	CPW-50000	CPW-75000
智能插座最大使用总功率:	≤800W	≤800W	≤800W	≤800W
UV灯功率:	36W	55W	55W	55W
最大流量:(L/h)	12000L/h	12000L/h	13000L/h	13000L/h
进出水口:	1 $\frac{1}{4}$ "~1 $\frac{1}{2}$ "~2"	1 $\frac{1}{4}$ "~1 $\frac{1}{2}$ "~2"	1 $\frac{1}{4}$ "~1 $\frac{1}{2}$ "~2"	1 $\frac{1}{4}$ "~1 $\frac{1}{2}$ "~2"
过滤棉面积:	60m <sup>2</sup>	80m <sup>2</sup>	80m <sup>2</sup>	80m <sup>2</sup>
适合养鱼的池塘:	20m <sup>3</sup>	30m <sup>3</sup>	40m <sup>3</sup>	50m <sup>3</sup>
适合装饰的池塘:	40m <sup>3</sup>	60m <sup>3</sup>	80m <sup>3</sup>	100m <sup>3</sup>
过滤桶容积:	50L	75L	170L	300L
规格:(LxWxH)	458×458×600	458×458×765	620×620×920	750×750×970

◆ 产品分解图 ◆



1	螺丝1	6	O型圈2	11	进出水口	16	过滤篮盖	21	螺丝2
2	UV灯头	7	石英玻璃管	12	紧固螺母	17	过滤篮	22	垫片
3	O型圈1	8	紧固螺母	13	过滤棉	18	紧固环	23	下轴套
4	橡胶密封垫	9	桶盖	14	隔板	19	O型圈3	24	清洁齿轮
5	UV灯	10	橡胶垫片	15	导流管	20	桶体	25	防护罩

## 水质检测记录表

[illegible]

◆ 保修 ◆

自购机之日起，非人为故障，除易损坏外本产品享有两年保修（免收零件费、维修费）。用户可持有效购货凭证到各经销商处联系维修，以下情况不在保修范围内：

- 1.人为故障，运输不当致使塑料部件不可修复性损坏；
- 2.无可靠的购买日期证明；
- 3.未按使用说明书上说明的正确方法使用；
- 4.不可抗拒的自然灾害；
- 5.产品出现质量问题时，应及时与经销商取得联系；因质量造成的损失，必须在六天内出示图片，相关部门鉴定书等证据，最大赔偿额不超过产品本身价值。

### 保修证登记表

请填写全部资料，以供核实保用资格。

保修卡

[illegible]

用户须知：为更好了解我厂产品质量情况以便及时为客户服务，特建立质量保修卡。

1. 本卡是为我厂产品保修服务的保证；
2. 保修期限为两年，以用户购买日期所开具发票为准，并填在本卡上；
3. 因使用不当、人为损坏不在保修范围内。

保修卡（经销商保留联）

产品型号		购买日期		
用户		详细地址		
邮政编码		电话		联系人
零售商				



- Scan the QR code to download the Smart Xiaoli SUNSUN APP.
- Log in the Myapp to download the Smart Xiaoli SUNSUN APP.
- Log in the APP STORE to download the Smart Xiaoli SUNSUN APP.

Sensen Group Co., Ltd.  
Address : No.61-79, Baima Road, Maao, Dinghai District, Zhoushan, Zhejiang 316015, P.R. China  
TEL : 86-580-8080124 8081168 FAX : 86-580-8080127 8080978  
Http : //www.sunsun-china.com E-mail : sunsun@mail.zsptt.zj.cn

# WiFi



## Intelligent biochemical pressure filter CPW series



## ◆ PROLEGOMENA ◆

This appliance can be used by children aged from 8 years and above and persons with reduced physical, sensory or mental capabilities or lack of experience and knowledge if they have been given supervision or instruction concerning use of the appliance in a safe way and understand the hazards involved.

Children shall not play with the appliance. Cleaning and user maintenance shall not be made by children without supervision.

If the supply cord is damaged, it must be replaced by the manufacturer or its service agent or a similarity qualified person in order to avoid a hazard.



Read operator's manual.

This appliance contains a UV-C emitter. The appliance is to be supplied through a residual current device (RCD) having a rated residual operating current not exceeding 30 mA.



**WARNING:** UV radiation is dangerous for the eyes and skin. Do not operate the UV-C emitter outside the appliance.

**WARNING:** Do not operate the UV-C emitter when it is removed from the appliance enclosure. Unintended use of the appliance or damage to the housing may result in the escape of dangerous UV-C radiation. UV-C radiation may, even in little doses, cause harm to the eyes and skin. Appliances that are obviously damaged must not be operated. Read the maintenance instructions before opening the appliance. The appliance must be disconnected from the supply before replacing the UV-C emitter.

**WARNING:** Disconnect the appliance from the supply before carrying out maintenance.

The product may not be disposed of with the normal household waster, but should be collected separately. More information on local landfill sites can be obtain from the municipality in which you live.



Please call your sales to recover your replaced products.

This device include some harmful substance, which will pollute water and harming human.

## ◆ USAGE ◆

The pressure filter with integrated UV is sealed pressure filter system for biological and mechanical filtering of normal pond water with a temperature of 0°C to 35 °C. This pressure filter is exclusively intended for private use for cleaning garden ponds with or without pond fish.

Be sure to use it in compliance with technical data. Never filter liquids other

than water. Never operate without water flow.

## ◆ SAFETY INSTRUCTIONS ◆

1. Electrical installation must be in accordance with the provisions of the domestic.
2. Equipment can only be worked with the socket which has safety earthing protection. The socket must conform to the related regulations of national (VDE, ENC....., IEC...).
3. Make sure the voltage in the nameplate is the same with the actual power supply.
4. Please ensure that the equipment is rated by a 30mA device which has the biggest fault current protection(FI or RCD) for safety protection.
5. For your own safety, please contact an electrical professional in case of questions and problems.
6. Do not connect the power supply when the parts are not installed.
7. Only operate the pump if no one in the water.
8. If cable or shell is damaged, please not use.
9. Before any operation on the equipment, should cut off all the power of the equipment.
10. When use, ensure that the equipment connection plugs and all connection do not be affected with damp.
11. Ultraviolet light is damage to the eyes and skin, so it can be switched on only after installing the shell.

## ◆ INSTALLATION ◆

1. When installation, please make sure the device is placed where the WIFI signal can be received well and the distance from the pond water should be more than 2 meters.
2. Avoid covering metal objects or shielding between WIFI signals to avoid loss of WIFI signals.
3. Avoid direct sunlight.
4. The operation of this device requires a pump with a maximum lift of not more than 0.3bar (to be purchased separately).
5. The power supply of the pump must be controlled on the intelligent socket A of the device.
6. The pressure of the hose(to be purchased separately) connecting this device with the pump should not be less than 0.3bar.
7. This device can be connected to the hose with inner diameter of 1 1/4",

1 1/2" or 2".

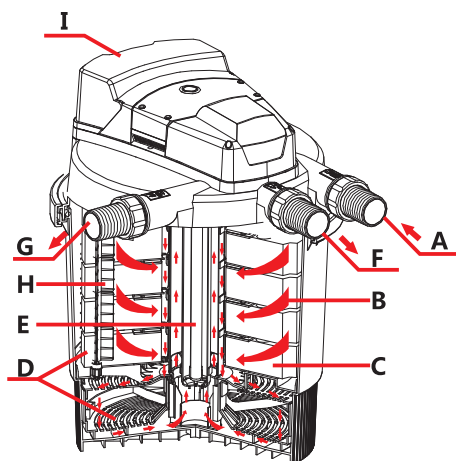
8. Please choose large diameter hose to reduce the loss of the flow of the pump.

9. This device is equipped with 2 intelligent sockets, in which the A socket is a special outlet for the supporting pump. B socket can be connected to any equipments.

10. Before putting into operation, first connect the pump power supply, check whether there is water leakage in the connection between the hose and inlet and outlet. If abnormal is found, shut down the pump immediately, and restart after it is excluded.

11. This equipment must be dismantled when the ice is foreseen.

### ◆ WORKING PRINCIPLE ◆



Inlet



Outlet



Drain outlet

A: Inlet

Dirty water pass inlet to enter into filter.

B: Vortex system

Under the action of gravity, suspended solids and mud are separated.

C: Mechanical filter

When the water through the filter sponge into the internal, dirt particles will be stopped by filtering sponge surface.

D: Biological clarifying

The pores of the filter sponge from a large inner surface which microorganisms can colonize. The yellow and blue filter sponges differ in size and density. This creates zones in which the water can flow at different speeds. Zones with a high flow speed (blue filter sponges) favour the colonization of microorganisms which convert ammonium to nitrate via nitride (nitrification). Zones with a low flow speed (yellow sponges) support the colonization of anaerobic microorganisms which reduce nitrate to nitrogen (denitrification).

E: UV-C filtration

Under 253.7nm UV-C, the bacterial disease and algae will be killed in a short time when water flows through the UV-lamp.

F: Water outlet

At the water outlet, the clarified water is fed back into the garden pond via pressure hose or a watercourse etc.

G: Drain outlet

Dirty water pass through the drain outlet, can be used to fertilize.

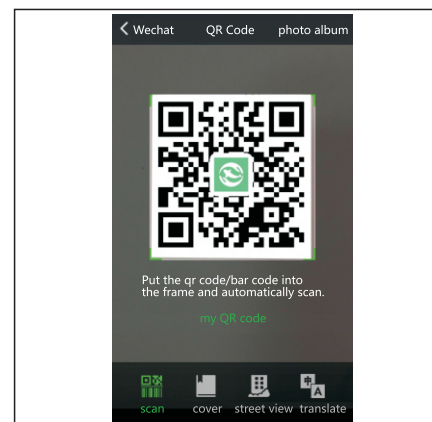
H: Automatic cleaning device

The filter sponge is extruded by rotating gears, thus achieve the cleaning effect.

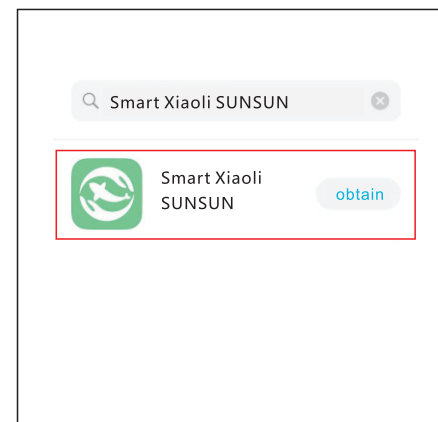
I: Operation panel

Control the filter state by manipulating the operation panel.

### ◆ INSTALLATION OF WIFI ◆



1. Scan the two-dimensional code on packaging or instructions via wechat, or log on Apple's official website (or Tencent application treasure mall) search "Smart Xiaoli SUNSUN" APP.



2. Click "Smart Xiaoli SUNSUN" APP to download and stall.