

**ROVER MOJO**  
**Mobile Phone**

# **Quick Start Guide**

Dear Customer,

Congratulations on becoming a proud owner of Rover product. Every Rover product goes through a rigorous process of sample evaluation and approval before commercial launch. We look forward to your patronage.

It would be our pleasure to receive feedback and suggestions you may have for improvements in the product(s) you are using.

#### SAFETY TIPS

- ✧ Use of wireless hands-free system (headphone, headset) with a low power BT emitter.
- ✧ Keep your calls short or send a text message (SMS) instead. This advice applies especially to children, adolescents and pregnant women.
- ✧ Use cell phone when the signal quality is good.
- ✧ People having active medical implants should preferably keep the cell phone at least 15 cm away from the implant.

## Contents

I. Warning .....	5
1 Safety information.....	5
2 Cautions on mobile phone use .....	6
2.1 Interference .....	6
2.2 Reasonable use .....	6
2.3 Qualified maintenance service.....	6
2.4 Water-resistance .....	6
2.5 Emergency calls.....	6
3 Precautions for use of battery .....	6
4 Cautions for children .....	7
II. Appearance .....	7
III. Start to use.....	8
1 Insert SIM card .....	8
2 Insert Memory card.....	12
3 Charge the battery .....	12
IV. Basic functions .....	13
1 Lock and unlock the screen.....	13
2 Make it yours .....	14
3 Make a call .....	16
4 Call log .....	18
5 Reject a call by SMS.....	19
6 Add a contact .....	20
7 Send and Receive message(s).....	21
8 Browser the Web .....	21

9 Enjoy music .....	21
10 Download applications on Google Play .....	22
11 Manage Applications .....	22
12 Applications and Utility.....	22
V. Technical Information .....	23

## **I. Warning**

Please read the concise rules. The breach of the rules may result in danger or violation of law.

### **1 Safety information**

#### **1.1 Traffic safety first**

Please use the mobile phone carefully when you drive a car. Park your car at roadside and then use the mobile phone if the driving condition is bad.

#### **1.2 Turn off in hospital**

Please abide by relevant provisions or regulations. Please turn off your mobile phone near medical equipment.

#### **1.3 Turn off in airplane**

Wireless equipment has disturbance to the airplane, so the use of the mobile phone in airplane is dangerous and illegal.

#### **1.4 Turn off when refueling**

Please don't use the mobile phone in gas station or near fuels or chemicals.

#### **1.5 Turn off near blasting sites**

Don't use the mobile phone in blasting sites. Please observe relevant restrictions and carry out rules or regulations.

### **2 Cautions on mobile phone use**

#### **2.1 Interference**

All phones may be interfered, which affect phone calls.

#### **2.2 Reasonable use**

Use only in the normal position. Do not touch the antenna area unnecessarily.

#### **2.3 Qualified maintenance service**

Only qualified personnel may install or repair this product.

#### **2.4 Water-resistance**

Your device is not water resistant. Keep it dry.

#### **2.5 Emergency calls**

Ensure the phone is switched on and in service. Enter the emergency number and press the Dial icon.

### **3 Precautions for use of battery**

**3.1** Do not dispose of batteries near or in a fire to avoid dangers.

**3.2** Do not dispose of batteries in the garbage. Dispose of batteries to assigned battery recycling

center.

#### 4 Cautions for children

Keep your device out the reach of children in case of accidental injury caused by incorrect use of the device as toys.

## II. Appearance



1. SIM card slot	2. Receiver	3. Front Camera	4. Recent key
5. Home Key	6. Back Key	7. Microphone	8. earphone jack
9. USB Connector	10. Speaker	11. Volume key	12. Power Key & fingerprint
13. Reset	14. Rear main camera	15. Rear secondary camera	16. Flash Light

### III. Start to use

#### 1 SIM card

The phone is a Dual SIM mobile phone which supports one physical SIM and one e-SIM, allows you to use the facility of one network.

##### 1.1. Insert the SIM card

Insert the SIM card correctly in the card slot; we suggest you switch off the phone first before you insert the SIM card.

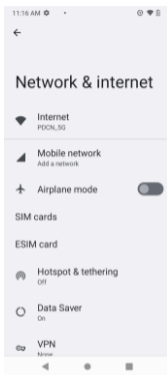
**Note:** Make sure you use the correct size SIM card and don't cut the SIM card.

##### 1.2. Activate the e-SIM

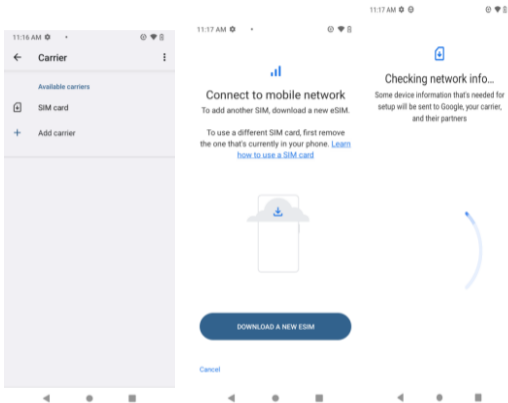
**Note:** Not all carriers support e-SIM, contact your service provider for details  
Settings are as follows:

A. Enter the settings--turn on the "network & the Internet"--connect to WIFI





B. "ESIM card"--"Add carrier"--"Download a new ESIM"--Checking network information



C. Scan the QR code provided by the Internet service provider  
**Note:** a QR code can only be used once

2:20 PM



### Scan QR code from network

If your network provider gave you a QR code, scan it now by keeping the code centered in the box



[Need help?](#)

2:13 PM

Carrier

2:13 PM

CARD 2



CARD 2

Enabled



Status

Enabled

Available carriers

DISABLE

DELETE



SIM card



Add carrier

Reset carriers

- D. After scanning the QR code and registering successfully, CARD 1 or CARD 2 will appear in the carrier (note: the corresponding card slot inserted shows card 1 or card 2), enter the CARD 1 or CARD 2 status, and the state is deactivated (showing unknown number), click to enable
- E. Reset carriers: this will remove all carriers from your devices.

## 2 Insert Memory card

Insert the Memory card into the slot in the correct direction; we suggest you switch off the phone first before you insert a Memory card.

Note: Use only compatible memory cards for use with this device. Incompatible memory cards may damage the card or the device and corrupt the data stored in the card. This mobile phone supports Memory card of up to 256GB.

## 3 Charge the battery

During charging, the battery indicator on the phone is a thunder icon. If the device is switched off during charging, there will still be a charging indication on the screen that shows the phone is being charged. If the device is overused when the battery is low, the charging icon might take some time to appear.

When the battery indicator on the screen says 'Battery is full', thunder icon will disappear, which means the completion of charging. If the phone is switched off during charging, the screen will display ' Battery is full '. It generally takes 4.5 hours to charge the battery. During charging, the battery, the device and the charger will get hot. This is normal.

Unplug the charger from the AC electrical outlet and disconnect the wiring between the phone and the charger after charging.

**Cautions:** Charge the phone in a well-ventilated place in which the temperature is between -10°C to +45 °C. Use the charger provided by the manufacturer only. The use of unconfirmed charger may lead to dangers and violate the manufacturer's warranty clause. If the temperature is too high or too low during charging, the device will automatically send a warning and stop charging to avoid damage to the battery or any danger.

## IV. Basic functions

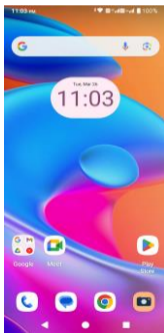
### 1. Lock and unlock the screen

Press power button to enter Sleep mode and meanwhile the screen will be locked; press power button again to wake up and then drag to up direction for unlock.



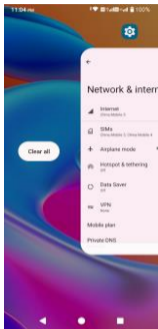
## 2. Make it yours

2.1 Home screen: It is your starting point to access all the features on your phone. It displays application icons and other features.




**2.2 Notification Bar:** At the top of the screen, the Status Bar displays the time, status, and notifications. If there is a new message, missed call or something in the notification bar, you can drag it down to open notification panel and click the desired one to have a view. When you finished, you can close it by dragging the panel up or pressing "Back".  
If you connect your phone to PC via USB, you can find the USB options, choose Media device (MTP) option you can see your phone memory in PC, this is same function as USB storage.

**2.3 Switch to Recently Used Application**  
Press recent key and hold the icon for a few seconds.  
Drag the APP to the up direction, you can close it.

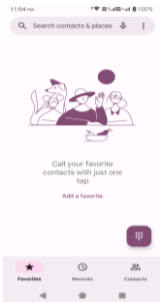


Touch and slide this place to choose to open the history application

### 3. Make a call

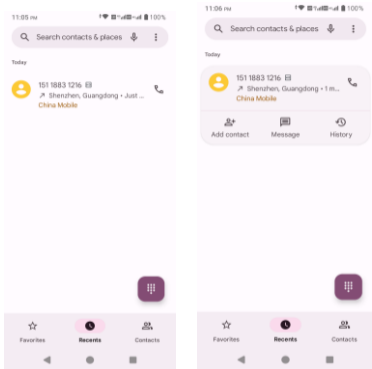
Click  and enter a complete phone number to make a call. Your phone also supports smart search for contacts, from your saved contacts list, for you to make a call.





Click to view "recent call", "Favorites" and "Contacts".

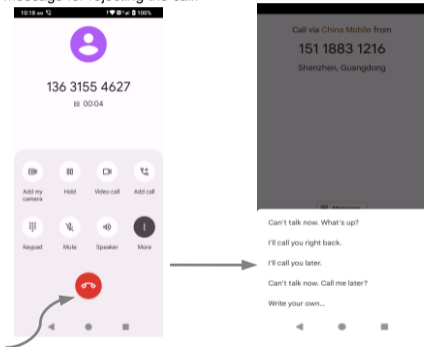
## 4. Call log



Press the number you can call back, view contact details etc.

## 5. Reject a call by SMS

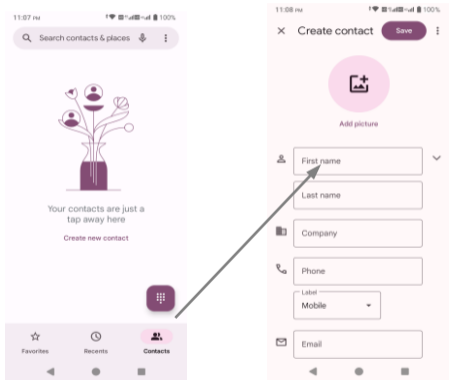
While there is an incoming call, and it's not inconvenient to accept the call, therefore you can send a message for rejecting the call.




Drag to up this icon and choose message icon for select and send SMS

## 6. Add a contact

Touch  to add contact



## 7. Send and Receive message(s)

Touch  to enter message, touch compose new message.

When you are composing a new text message, you can select text for cutting or copying. The selected text is highlighted in blue.

Tap  to add "Attach" including Pictures, Videos, Audios, etc. to send MMS.

When a new message comes, you can read by dragging notification panel and click the message, or entering Message to read it directly.

Long press one of the all message threads, you can delete thread.

## 8. Browse the Internet

### 8.1 Set up Internet/Data connection

Enter Settings > More..., scroll down to find out Mobile network, and then enter "Access Points Names", choose the desired WAP account.

### 8.2 Switch on Data connection or Wi-Fi

To browse the internet, you need to switch on Data connection. If there is Wi-Fi around, you can switch on Wi-Fi to use it browse the internet.

## 9. Enjoy music

When you copy music to your SD card, the YT Music player searches the card for music files and builds a catalog of your music, based on information about each file that is stored in the file itself.

## **10. Download applications on Google Play**

Add your Google Account to save game progress and download millions of apps on Google Play.

## **11. Manage Applications**

Enter Setting > App.

As you install downloaded Apps, you need to switch on “Unknown sources” in application settings.

Select one app, you can uninstall, clear data, move to phone/SD card.

## **12. APPLICATIONS & UTILITIES**

For your entertainment purpose, your device is provided with several interesting games, applications and utilities, such as: G-mail Go, Email, and Google Play. Please ensure that you have Internet setting in your device to access these applications. Contact your operator for Internet Access settings.

***Tips:** With connection to Wi-Fi network, this application can run normally, too.*

## **13. Settings**

### **13.1 Wi-Fi**

Open Wi-Fi search nearby Wi-Fi and connect it. Then you can use internet or download apps for free.

### **13.2 Bluetooth**

Open Bluetooth to pair and connect to other devices like phones to share files, music, photos, videos etc.

### **13.3 Security**

Screen lock

There are four screen lock which you can choose, that is Slide, Pattern, PIN, Password.

## **V. Technical Information**

Model: MOJO

Size Length: 168mm\*77.8mm\*8.5mm

Networks: GSM 850/900/1800/1900 MHz

WCDMA 850/1700/1900 MHz

LTE B2/B4/B5/B12/B13/B25/B26/B41/B66/B71

Weight: 205g (approx with battery)

Battery: 5000mAh

Battery Type: Li-ion Battery

Nominal voltage: 3.8V

Max. Voltage: 4.35V

Operation Temperature: -10°C ~+45 °C;

The operation time of the battery depends on conditions such as:

- Transmitting power level
- Signal (distance between the phone and the base station)
- Network parameters defined by the operator
- Phone use (WAP, games, SMS)
- Charging procedure used
- Internal Memory: 128GB
- Available storage capacity is subject to pre-loaded Mobile Applications & Operating System of this mobile phone.



## Exclusions:

Subject to the exclusions contained below:

1. Damage due to the improper use.
2. User does not follow the manual.

### Explanation:

The company has the final right of the explanation for this document.

Software upgrades will not be announced.

All pictures are for reference only in the instruction book; please refer to the actual phone.

## Disclaimer

© SUNTAK USA Inc.. All rights reserved.

Features and specifications are subject to change without prior notice. Always contact your service provider for details or help. Talk and standby time is quoted in digital mode and are approximate; battery performance and the signal reception depend on network configuration, signal strength, type of SIM card, operating temperature, features selected as well as voice, data and other application usage pattern. The phones supports BT, A2DP, in order for BT devices to communicate with one another, they must utilize the same BT Profile. Always demand for original Rover mobile phones to protect against buying tinkered and/or used, refurbished or tampered phones. The warranty is applicable only for Rover phones; the company is not responsible for any loss or theft. Always use Rover original Enhancements (including batteries) for safety. The use of any other type may invalidate and approval or warranty applying to the mobile phone and may be dangerous. The phone is designed to operate using Li-polymer batteries approved by the phone manufactures. Using non approved batteries with the phone may result in poor performance and damage to the phone or its enhancements. The display and products visualization here are

illustrative purposes only; Display / color of the phone may differ from that shown on the manual. All features, functionality and other product specifications are based on the latest available information and are correct at the time of printing; however, such product specifications are subject to change without notice. Copyrights are reserved.

### **Specific Absorption Rate (SAR) Information**

**THIS MOBILE PHONE MEETS THE INTERNATIONAL GUIDELINES ON EXPOSURE TO RADIO FREQUENCIES.**

Your mobile phone is a radio transmitter and receiver. It is designed and manufactured not to exceed the emission limits for exposure to radio-frequency (RF) energy. These limits are part of comprehensive guidelines and establish permitted levels of RF energy for the general population. The exposure standard for mobile phones employs a unit of measurement known as the Specific Absorption Rate, or SAR. The international guidelines have set this limit at 1.6W/kg.

Maximum SAR for this device as mentioned below.	
MAX SAR Value (Head)	0.414W/Kg in 1g
MAX SAR Value (Body)	1.009W/Kg in 1g

## **INFORMATION UNDER E-WASTE (MANAGEMENT AND HANDLING)**

This product falls under the E-WASTE (MANAGEMENT) RULES, 2017 of Ministry of Environment, Forests & Climate Change (MoEF & CC).



### **Dos for disposal of product:**

- Always drop your used electronic products, batteries, and packaging materials after the end of their life at the nearest collection point or collection center
- Separate the packaging material according to responsible waste disposal options and sort for recycling.
- The battery can easily be removed from the product for recycling.

### **Don't of disposal of equipment**

- Never dump E-waste in garbage bins or municipal solid waste stream.
- Do not dispose of your product as unsorted municipal waste.
- Do not dispose used, damaged or leaking Lithium Ion (Li-Ion) batteries with

- normal household waste.
- Information on the consequences of improper handling, accidental breakage damage and improper recycling of the end of life product: (inclusions)
- If batteries are not properly disposed of, it can cause harm to human health or the environment.
- Placing of batteries or devices on or in heating devices, such as microwave ovens, stoves, or radiators and improper disposal of batteries may lead to explosion.
- If the battery terminals are in contact with metal objects, it may cause a fire.

Google, YouTube, Google Maps, G-mail and other marks are trademarks of Google LLC.

### **Statement of Compliance**

We here declare that the ROVER MOJO mobile phone complies with the standards and provisions of the Directives.

## **FCC Warning**

This device complies with part 15 of the FCC Rules. Operation is subject to the following two conditions: (1) This device may not cause harmful interference, and (2) this device must accept any interference received, including interference that may cause undesired operation.

Any Changes or modifications not expressly approved by the party responsible for compliance could void the user's authority to operate the equipment.

**Note:** This equipment has been tested and found to comply with the limits for a Class B digital device, pursuant to part 15 of the FCC Rules. These limits are designed to provide reasonable protection against harmful interference in a residential installation. This equipment generates uses and can radiate radio frequency energy and, if not installed and used in accordance with the instructions, may cause harmful interference to radio communications. However, there is no guarantee that interference will not occur in a particular installation. If this equipment does cause harmful interference to radio or television reception, which can be determined by turning the equipment off and on, the user is encouraged to try to correct the interference by one or more of the following measures:

- Reorient or relocate the receiving antenna.
- Increase the separation between the equipment and receiver.
- Connect the equipment into an outlet on a circuit different from that to which the receiver is connected.
- Consult the dealer or an experienced radio/TV technician for help.

Specific Absorption Rate (SAR) information:

This 4G SMARTPHONE meets the government's requirements for exposure to radio waves. The guidelines are based on standards that were developed by independent scientific organizations through periodic and thorough evaluation of scientific studies. The standards include a substantial safety margin designed to assure the safety of all persons regardless of age or health.

#### FCC RF Exposure Information and Statement

The SAR limit of USA (FCC) is 1.6 W/kg averaged over one gram of tissue. Device types: 4G SMARTPHONE (FCC ID: 2AP7LMOJO) has also been tested against this SAR limit. The highest SAR value reported under this standard during product certification for use at the ear is 0.414W/kg and when properly worn on the body is 1.009W/kg. the Hotspot SAR value is 0.1009W/kg, the simultaneous transmission SAR value is 0.686W/kg on the head and 1.271W/kg on the body. This device was tested for typical body-worn operations with the back of the handset kept 10mm from the body. To maintain compliance with FCC RF exposure requirements, use accessories that maintain a 10mm separation distance between the user's body and the back of the handset. The use of belt clips, holsters and similar accessories should not contain metallic components in its assembly. The use of accessories that do not satisfy these requirements may not comply with FCC RF exposure requirements, and should be avoided.

#### Body-worn Operation

This device was tested for typical body-worn operations. To comply with RF exposure requirements, a minimum separation distance of 10mm must be maintained between the user's body and the handset, including the antenna. Third-party belt-clips, holsters, and similar accessories used by this device should not contain any metallic components. Body-worn accessories that do not meet these requirements may not comply with RF exposure requirements and should be avoided. Use only the supplied or an approved antenna