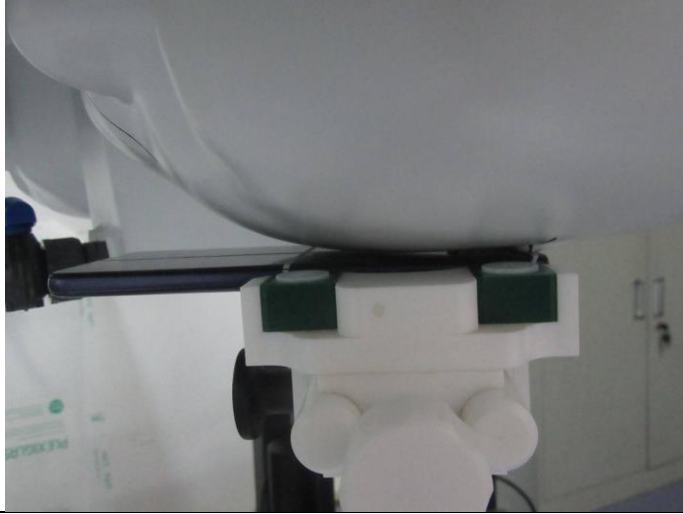
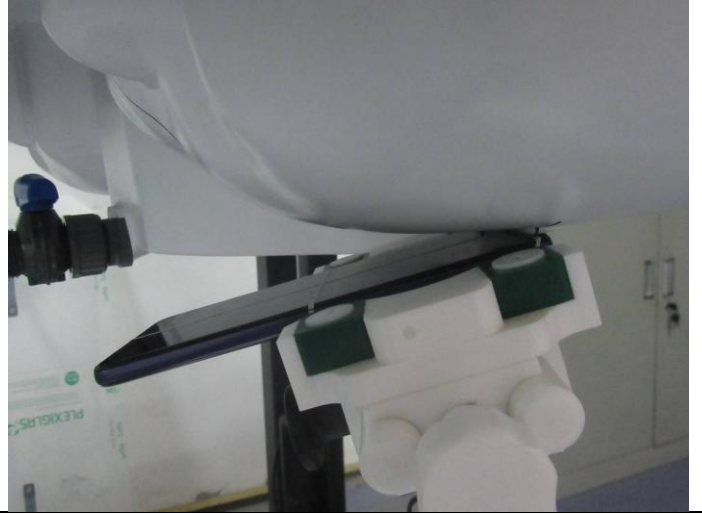


### Test Positions

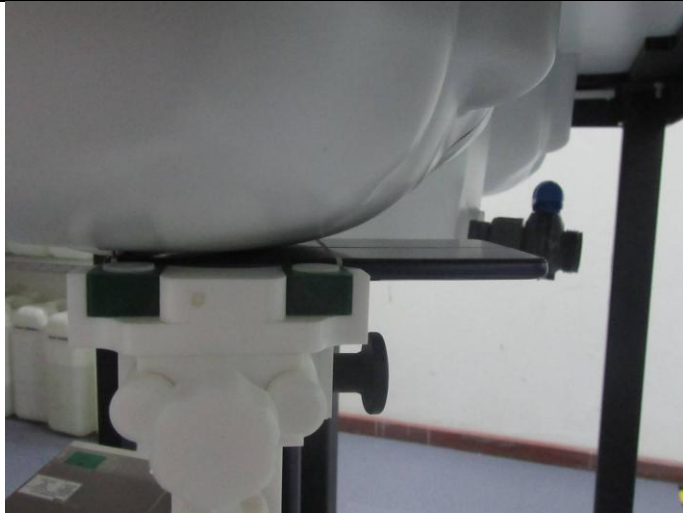
Left Cheek



Left Tilt 15 Degree



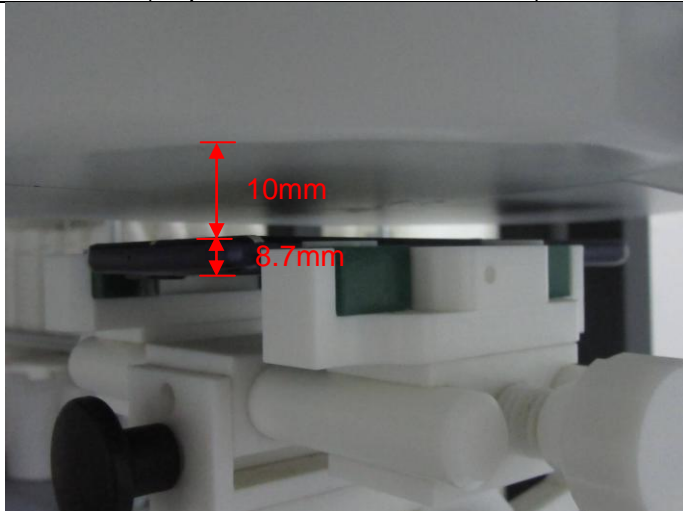
Right Cheek



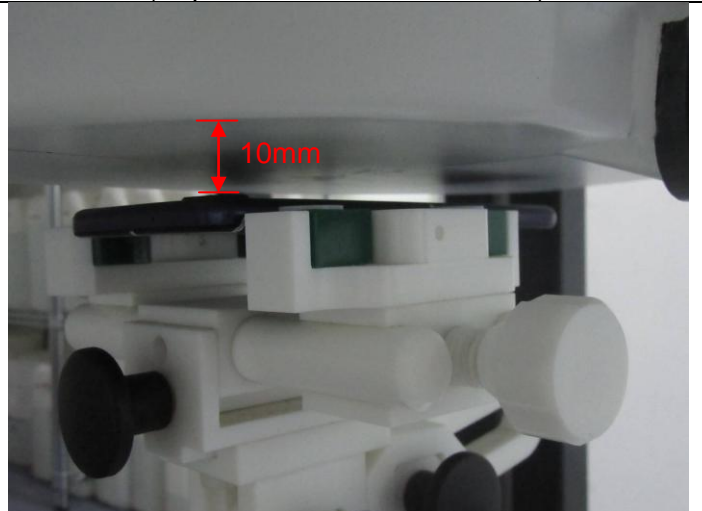
Right Tilt 15 Degree



Front Side  
(Separation distance of 10mm)



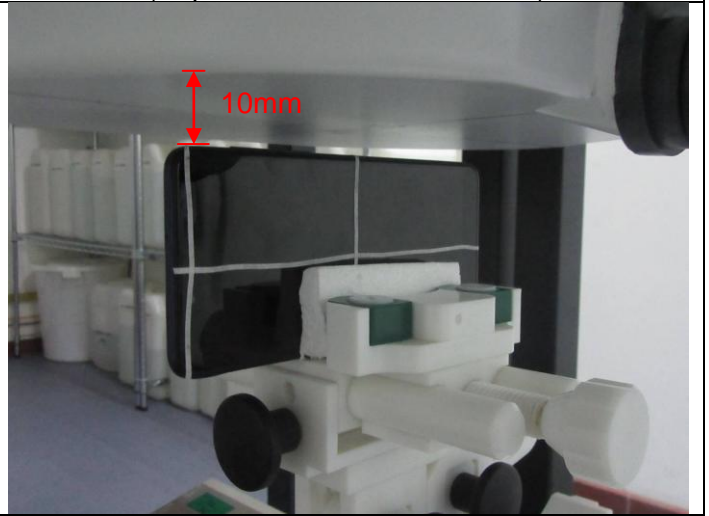
Back Side  
(Separation distance of 10mm)



Left Side  
(Separation distance of 10mm)



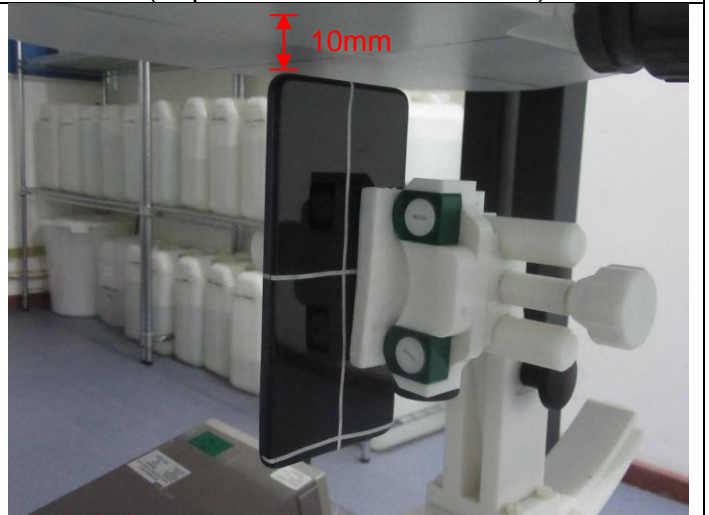
Right Side  
(Separation distance of 10mm)



Top Side  
(Separation distance of 10mm)



Bottom Side  
(Separation distance of 10mm)



## Liquid depth

Head 750MHz depth (15.1cm)



Body 750MHz depth (15.2cm)



Head 850MHz depth (15.0cm)



Body 850MHz depth (15.2cm)



Head 1800MHz depth (15.1cm)

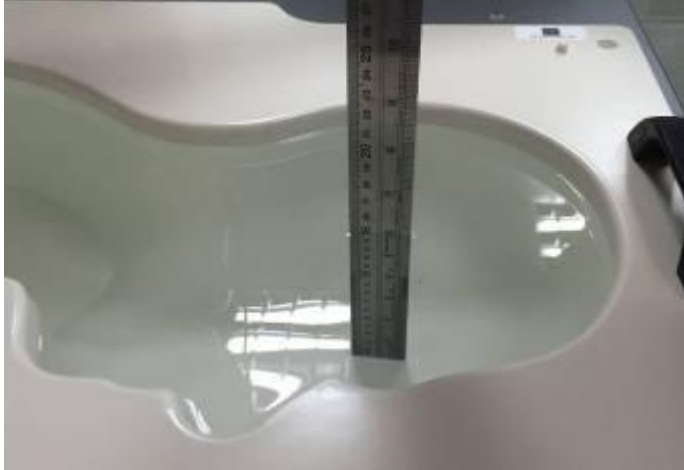


Body 1800MHz depth (15.3cm)



Head 1900MHz depth (15.0cm)

Body 1900MHz depth (15.1cm)



Head 2450MHz depth (15.3cm)

Body 2450MHz depth (15.0cm)



Head 2600MHz depth (15.3cm)

Body 2600MHz depth (15.2cm)



Head 5000MHz depth (15.2cm)

Body 5000MHz depth (15.2cm)

