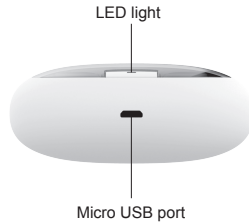
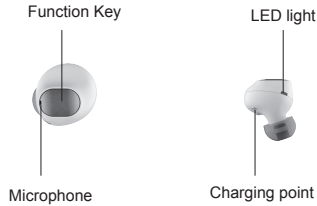




HELLO ALIENS

VOICE FORM THE DEPTHS OF THE UNIVERSAL

### USER MANUAL



2

### Main Function

- 1.The product Alien E10 is composed of three parts: left channel earphone, right channel earphone and the charging box. The LEFT headphone is the Host headphone and LEFT Channel. The RIGHT headphone is the Guest headphone and RIGHT Channel.
- 2.When both headphones connected with each other, Alien E10 can play music in stereo effect.



Left Channel Earphone

Right Channel Earphone

Charging box

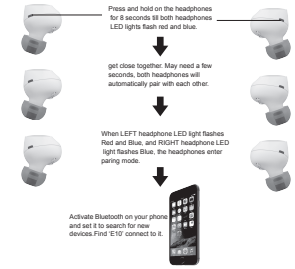
### First USE

Take both headphones from charging dock, press and hold on the headphones for 8 seconds till both headphones LED lights flash red and blue, get close together. May need a few seconds, both headphones will automatically pair with each other. When LEFT headphone LED light flashes Red and Blue, and RIGHT headphone LED light flashes Blue, the headphones enter pairing mode.

Activate Bluetooth on your phone and set it to search for new devices. Find 'E10' connect to it. (Note : Only one E10 displays in your mobile Bluetooth devices list when headphones connected with each other.)

Before use, please charge Alien for 1 hour.

3



### After First Use

Press and hold on both headphones for 3 seconds till blue light on, release key, headphones power on. Once paired, Guest headphone(RIGHT) will automatically connect to your Host headphone(LEFT), when it is on; Both headphones will automatically connect to your device, when your device Bluetooth is on; Once Guest headphone(RIGHT) has Blue Flash, and Host headphone(LEFT) has Blue and Red Alternate Flash, two headphones are ready to go.

4

### Calling

- Host headphone (LEFT headphone) only:
- Redial last Number: Double Tap Power Key
- Answer or End a Call: Tap Power Key
- Decline a call: Press and Hold Power Key for 2s

### Power OFF

- Power off automatically: put headphones back to battery box
- Power off manually: when both headphones connected, press and hold on function key of either headphone for 4s, both headphones power off together
- headphone disconnected with mobile beyond 5mins, headphones power off

### Restore Factory Settings

- Manually turn off both headphones.
- Press and hold both power keys for 8 seconds until both headphones Red light and Blue light flash alternately, and get close together. Your headphones have restored the factory default settings when RIGHT headphone LED light flashes Blue and LEFT headphone LED light flashes Blue and Red.

### Specification

- Product name: Alien
- Model name: E10
- Bluetooth Version: V4.1
- Working distance: <10M
- Battery capacity: 60mAh
- Talking time: \*4H
- Music play time: \*3.5H
- Charging time: \*1H
- Weight: headphone around 7g, charging box around 77g
- NOTE \* Performance is dependent upon battery and may vary by device

### Wearing



F8  
Remove the headset from the case, choose the right Ear tip to fit your ears.  
Adjust  
Twist your headset to make it fit comfortably to you.

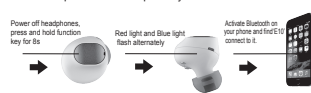
5

6

### Charging



### Two headphones used separately



7

### Safety Guide

1. Avoid products under strong sunlight;
2. Input voltage should not exceed DC 5.3V;
3. Products cannot put into water or use in the heavily rainy day;

### Trouble shooting

- 1.All of the indicator light of the headphone are not indicated. Check whether the headphone is on; .The battery may need to charge;
2. Charging indicator light not indicated. Check whether the headphone is full of power; Check the charging dock and charging cable are intact; Check the headphones are in the charging dock with the right position,then correctly connect to charging connection points; .Check the charging points on the headphones, keep them clean;
- 3.When you activated Bluetooth devices, but cannot find E10; .Check whether the headphone is in the pairing mode (LEFT headphone red and blue lights flashing alternately);
4. One of headphones stop working in paired Mode .Restore factory settings; .Re-pair the headphone;
- 5.Sound often intermittent when you are playing music. .Try to change your audio file and use the higher quality audio source; Regularly clean mobile phone audio caches; .Make sure the guest headphone only connected to main headphone in the connected Mode;

8

**FCC STATEMENT :**

This device complies with Part 15 of the FCC Rules. Operation is subject to the following two conditions:

- (1) This device may not cause harmful interference, and
- (2) This device must accept any interference received, including interference that may cause undesired operation.

**Warning:** Changes or modifications not expressly approved by the party responsible for compliance could void the user's authority to operate the equipment.

NOTE: This equipment has been tested and found to comply with the limits for a Class B digital device, pursuant to Part 15 of the FCC Rules. These limits are designed to provide reasonable protection against harmful interference in a residential installation. This equipment generates uses and can radiate radio frequency energy and, if not installed and used in accordance with the instructions, may cause harmful interference to radio communications. However, there is no guarantee that interference will not occur in a particular installation. If this equipment does cause harmful interference to radio or television reception, which can be determined by turning the equipment off and on, the user is encouraged to try to correct the interference by one or more of the following measures:

- Reorient or relocate the receiving antenna.
- Increase the separation between the equipment and receiver.
- Connect the equipment into an outlet on a circuit different from that to which the receiver is connected.
- Consult the dealer or an experienced radio/TV technician for help.

**RF warning statement:**

The device has been evaluated to meet general RF exposure requirement. The device can be used in portable exposure condition without restriction.