

# FCC TEST REPORT

Client Name : SHENZHEN SUOAI ELECTRONICS TECHNOLOGY CO.,LTD

Address : 8FL, A Block, huayuan Industrial area, Fuyong No.1 industrial zone, Baoan, Shenzhen, Guangdong, China

Product Name : receiver

Date : Oct. 25, 2019

**Shenzhen Anbotek Compliance Laboratory Limited**



# Contents

1. General Information.....	4
1.1. Client Information.....	4
1.2. Description of Device (EUT).....	4
1.3. Auxiliary Equipment Used During Test.....	5
1.4. Description of Test Modes.....	5
1.5. List of Channels.....	6
1.6. Description of Test Setup.....	7
1.7. Test Equipment List.....	8
1.8. Measurement Uncertainty.....	9
1.9. Description of Test Facility.....	9
2. Summary of Test Results.....	10
3. Conducted Emission Test.....	11
3.1. Test Standard and Limit.....	11
3.2. Test Setup.....	11
3.3. Test Procedure.....	11
3.4. Test Data.....	12
4. Radiated Emission and Band Edge.....	15
4.1. Test Standard and Limit.....	15
4.2. Test Setup.....	16
4.3. Test Procedure.....	17
4.4. Test Data.....	18
5. 20dB Bandwidth Test.....	28
5.1. Test Standard and Limit.....	28
5.2. Test Setup.....	28
5.3. Test Procedure.....	28
5.4. Test Data.....	28
6. Antenna Requirement.....	31
6.1. Test Standard and Requirement.....	31
6.2. Antenna Connected Construction.....	31
APPENDIX I -- TEST SETUP PHOTOGRAPH.....	32
APPENDIX II -- EXTERNAL PHOTOGRAPH.....	34
APPENDIX III -- INTERNAL PHOTOGRAPH.....	37

# TEST REPORT

Applicant : SHENZHEN SUOAI ELECTRONICS TECHNOLOGY CO.,LTD  
Manufacturer : DONGGUAN SUOAI ELECTRONICS CO.,LTD  
Product Name : receiver  
Model No. : SR003  
Trade Mark : PHILIPS  
Rating(s) : Input: DC 5V USB Port

Test Standard(s) : **FCC Part15 Subpart C, Paragraph 15.249**

Test Method(s) : **ANSI C63.10: 2013**

The device described above is tested by Shenzhen Anbotek Compliance Laboratory Limited to determine the maximum emission levels emanating from the device and the severe levels of the device can endure and its performance criterion. The measurement results are contained in this test report and Shenzhen Anbotek Compliance Laboratory Limited is assumed full of responsibility for the accuracy and completeness of these measurements. Also, this report shows that the EUT (Equipment Under Test) is technically compliant with the FCC Part 15 Subpart C requirements.

This report applies to above tested sample only and shall not be reproduced in part without written approval of Shenzhen Anbotek Compliance Laboratory Limited.

Date of Receipt

Oct. 08, 2019

Date of Test

Oct. 08~21, 2019

Prepared by



*Dolly mo*

(Engineer / Dolly Mo)

Reviewer

*Bibo Zhang*

(Supervisor / Bibo Zhang)

Approved & Authorized Signer

*Sally Zhang*

(Manager / Sally Zhang)





## 1. General Information

### 1.1. Client Information

Applicant	:	SHENZHEN SUOAI ELECTRONICS TECHNOLOGY CO.,LTD
Address	:	8FL, A Block, huayuan Industrial area, Fuyong No.1 industrial zone, Baoan, Shenzhen, Guangdong, China
Manufacturer	:	DONGGUAN SUOAI ELECTRONICS CO.,LTD
Address	:	No.3, Huayu Street, Changlong Village, Huangjiang Town, Dongguan, China
Factory	:	DONGGUAN SUOAI ELECTRONICS CO.,LTD
Address	:	No.3, Huayu Street, Changlong Village, Huangjiang Town, Dongguan, China

### 1.2. Description of Device (EUT)

Product Name	:	receiver
Model No.	:	SR003
Trade Mark	:	PHILIPS
Test Power Supply	:	AC 120V, 60Hz for MacBook Air
Test Sample No.	:	1-2-1(Normal Sample), 1-2-2(Engineering Sample)
Product Description	Operation Frequency:	2402~2480MHz
	Number of Channel:	40 Channels
	Modulation Type:	GFSK
	Antenna Type:	PCB Antenna
	Antenna Gain(Peak):	0 dBi
<b>Remark:</b> 1) For a more detailed features description, please refer to the manufacturer's specifications or the User's Manual.		

### 1.3. Auxiliary Equipment Used During Test

MacBook Air	Model: A1466
	Input: 14.85V/3.05A CMIIT ID:C02HXB48DRVC
	Adapter:
	Input: AC 100-240V, 1A, 50-60Hz Output: 14.85V/3.05A

### 1.4. Description of Test Modes

To investigate the maximum EMI emission characteristics generates from EUT, the test system was pre-scanning tested base on the consideration of following EUT operation mode or test configuration mode which possible have effect on EMI emission level. Each of these EUT operation mode(s) or test configuration mode(s) mentioned above was evaluated respectively.

Pretest Mode	Description
Mode 1	CH01
Mode 2	CH19
Mode 3	CH40

For Conducted Emission	
Final Test Mode	Description
Mode 1	CH01
Mode 2	CH19
Mode 3	CH40

For Radiated Emission	
Final Test Mode	Description
Mode 1	CH01
Mode 2	CH19
Mode 3	CH40

Note:

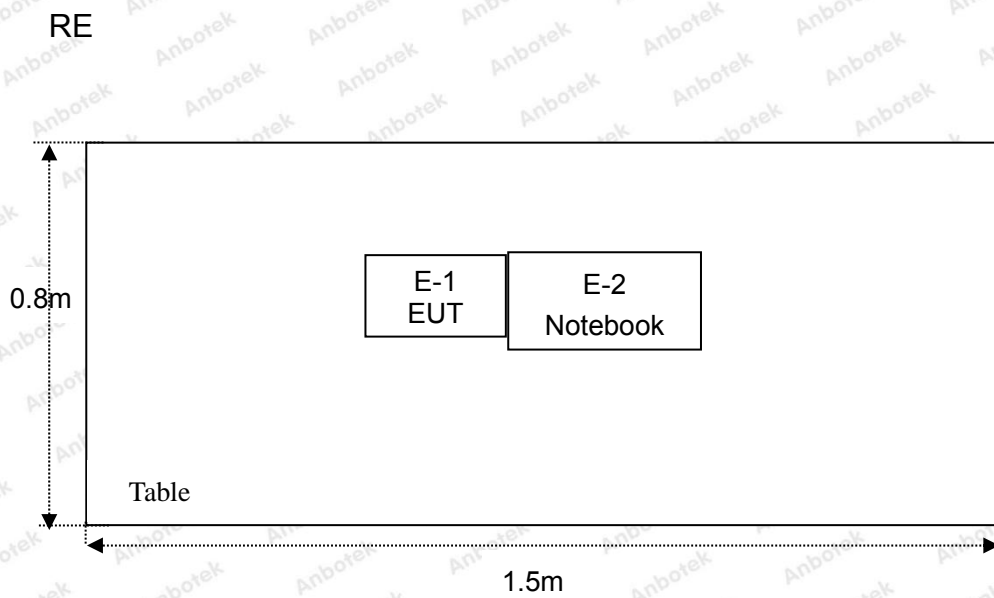
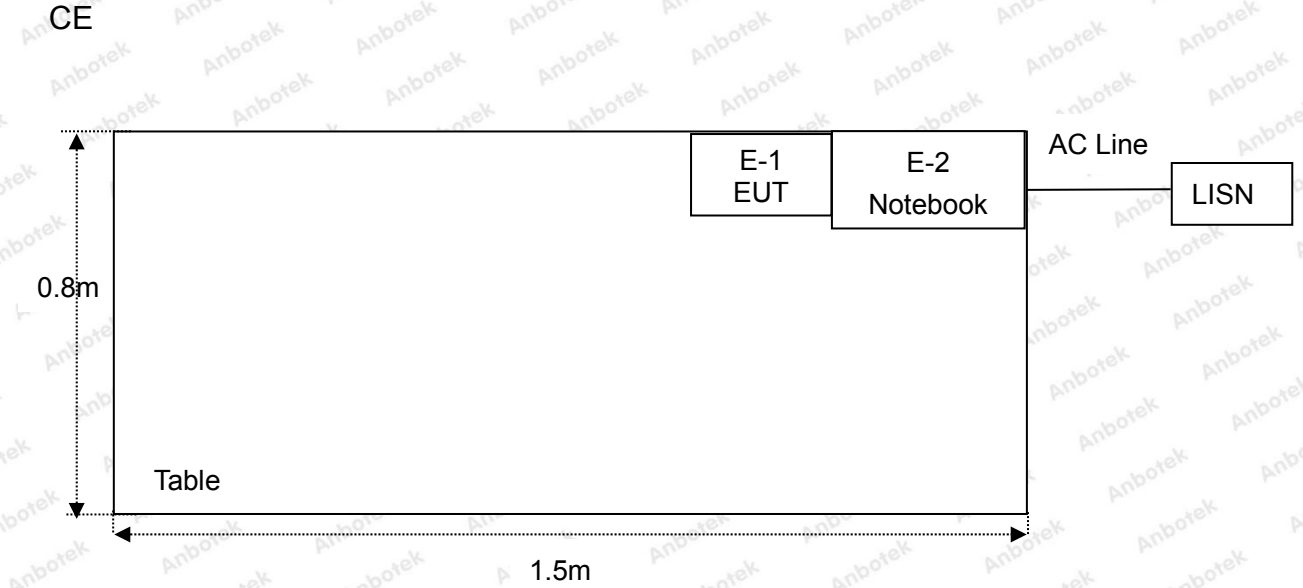
1. The engineering test program was provided and the EUT was programmed to be in continuously transmitting mode.

**1.5. List of Channels**

Channel	Freq. (MHz)	Channel	Freq. (MHz)	Channel	Freq. (MHz)	Channel	Freq. (MHz)
1	2402	11	2424	21	2444	31	2462
2	2404	12	2426	22	2446	32	2464
3	2408	13	2428	23	2448	33	2466
4	2410	14	2430	24	2450	34	2468
5	2412	15	2432	25	2452	35	2470
6	2414	16	2434	26	2454	36	2472
7	2416	17	2436	27	2456	37	2474
8	2418	18	2438	28	2458	38	2476
9	2420	19	2440	29	2460	39	2478
10	2422	20	2442	30	2461	40	2480



## 1.6. Description of Test Setup



## 1.7. Test Equipment List

Item	Equipment	Manufacturer	Model No.	Serial No.	Last Cal.	Cal. Interval
1.	L.I.S.N. Artificial Mains Network	Rohde & Schwarz	ENV216	100055	Nov. 26, 2018	1 Year
2.	EMI Test Receiver	Rohde & Schwarz	ESPI3	101604	Nov. 05, 2018	1 Year
3.	RF Switching Unit	Compliance Direction	RSU-M2	38303	Nov. 05, 2018	1 Year
4.	Spectrum Analysis	Agilent	E4407B	US39390582	Nov. 05, 2018	1 Year
5.	MAX Spectrum Analysis	Agilent	N9020A	MY51170037	Nov. 05, 2018	1 Year
6.	Preamplifier	SKET Electronic	BK1G18G30 D	KD17503	Nov. 05, 2018	1 Year
7.	Double Ridged Horn Antenna	Instruments corporation	GTH-0118	351600	Nov. 20, 2018	1 Year
8.	Bilog Broadband Antenna	Schwarzbeck	VULB9163	VULB 9163-289	Nov. 19, 2018	1 Year
9.	Loop Antenna	Schwarzbeck	FMZB1519B	00053	Nov. 20, 2018	1 Year
10.	Horn Antenna	A-INFO	LB-180400-K F	J211060628	Nov. 20, 2018	1 Year
11.	Pre-amplifier	SONOMA	310N	186860	Nov. 05, 2018	1 Year
12.	EMI Test Software EZ-EMC	SHURPLE	N/A	N/A	N/A	N/A
13.	RF Test Control System	YIHENG	YH3000	2017430	Nov. 05, 2018	1 Year
14.	Power Sensor	DAER	RPR3006W	15100041SN045	Nov. 05, 2018	1 Year
15.	Power Sensor	DAER	RPR3006W	15100041SN046	Nov. 05, 2018	1 Year
16.	MXA Spectrum Analysis	Agilent	N9020A	MY51170037	Nov. 05, 2018	1 Year
17.	MXG RF Vector Signal Generator	Agilent	N5182A	MY48180656	Nov. 05, 2018	1 Year
18.	Signal Generator	Agilent	E4421B	MY41000743	Nov. 05, 2018	1 Year
19.	DC Power Supply	LW	TPR-6420D	374470	Oct. 31, 2018	1 Year
20.	Constant Temperature Humidity Chamber	ZHONGJIAN	ZJ-KHWS80 B	N/A	Nov. 01, 2018	1 Year



### 1.8. Measurement Uncertainty

Radiation Uncertainty	:	Ur = 3.9 dB (Horizontal)
		Ur = 3.8 dB (Vertical)
Conduction Uncertainty	:	Uc = 3.4 dB

### 1.9. Description of Test Facility

The test facility is recognized, certified, or accredited by the following organizations:

#### FCC-Registration No.: 184111

Shenzhen Anbotek Compliance Laboratory Limited, EMC Laboratory has been registered and fully described in a report filed with the (FCC) Federal Communications Commission. The acceptance letter from the FCC is maintained in our files. Registration No. 184111, September 30, 2018.

#### ISED-Registration No.: 8058A

Shenzhen Anbotek Compliance Laboratory Limited, EMC Laboratory has been registered and fully described in a report filed with the (ISED) Innovation, Science and Economic Development Canada. The acceptance letter from the ISED is maintained in our files. Registration 8058A, March 07, 2019.

#### Test Location

Shenzhen Anbotek Compliance Laboratory Limited.

1/F, Building D, Sogood Science and Technology Park, Sanwei community, Hangcheng Street, Bao'an District, Shenzhen, Guangdong, China.518102

## 2. Summary of Test Results

Standard Section	Test Item	Result
15.203	Antenna Requirement	PASS
15.207	Conducted Emission	PASS
15.249	Radiated Emission	PASS
15.215(c)	20dB Bandwidth	PASS
15.249(c)	Band Edge	PASS

**Remark:** "N/A" is an abbreviation for Not Applicable.



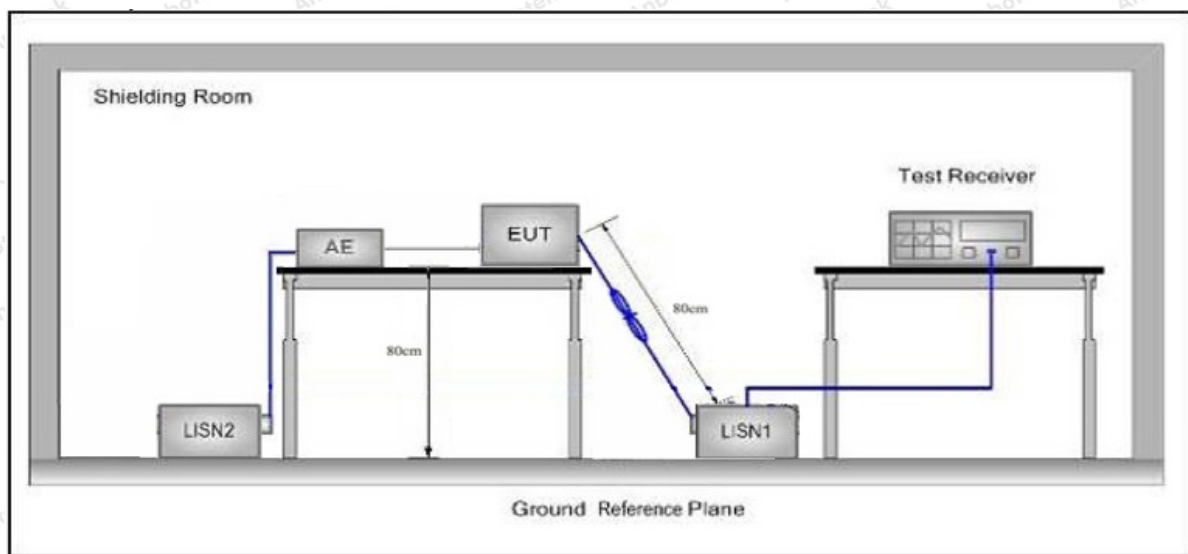
## 3. Conducted Emission Test

### 3.1. Test Standard and Limit

Test Standard	FCC Part15 Section 15.207		
Test Limit	Frequency	Maximum RF Line Voltage (dBuV)	
		Quasi-peak Level	Average Level
	150kHz~500kHz	66 ~ 56 *	56 ~ 46 *
	500kHz~5MHz	56	46
5MHz~30MHz	60	50	

**Remark:** (1) \*Decreasing linearly with logarithm of the frequency.  
 (2) The lower limit shall apply at the transition frequency.

### 3.2. Test Setup



### 3.3. Test Procedure

The EUT system is connected to the power mains through a line impedance stabilization network (L.I.S.N.). This provides a 50ohm coupling impedance for the EUT system. Please refer the block diagram of the test setup and photographs. Both sides of AC line are checked to find out the maximum conducted emission. In order to find the maximum emission levels, the relative positions of equipment and all of the interface cables shall be changed according to FCC ANSI C63.10-2013 on Conducted Emission Measurement.

The bandwidth of test receiver (ESCI) set at 9kHz.

The frequency range from 150kHz to 30MHz is checked.



### 3.4. Test Data

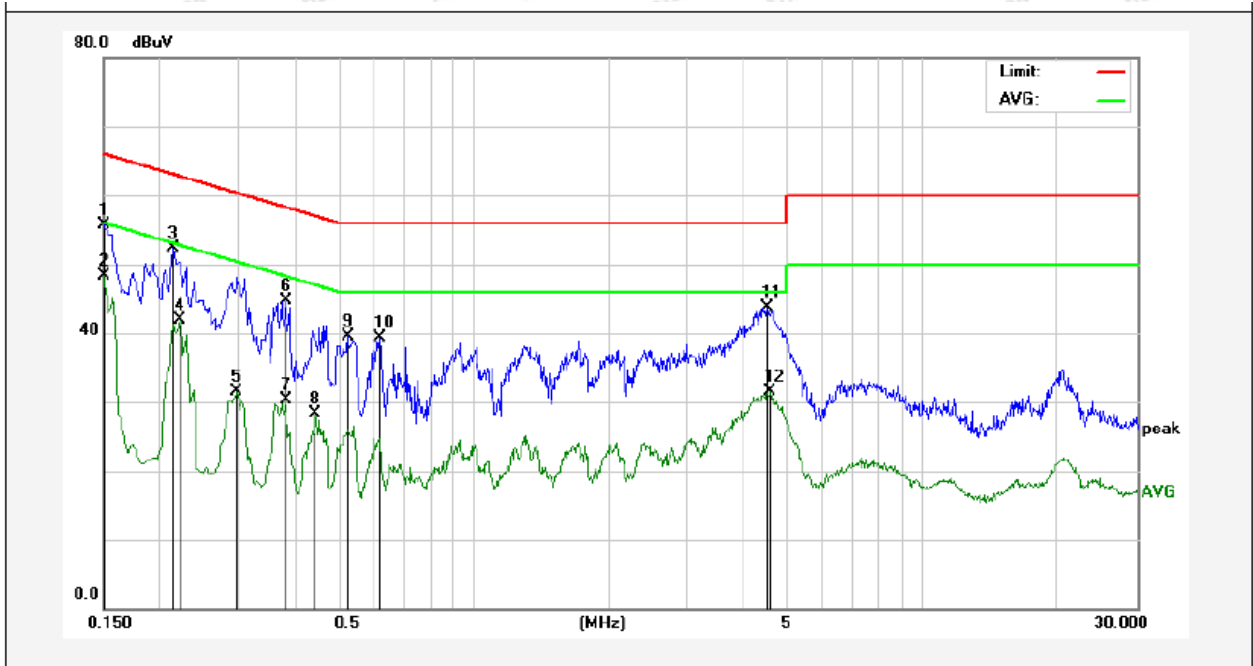
#### PASS

During the test, pre-scan all the modes, and found the Low channel which is the worst case, only the worst case is recorded in the report.



### Conducted Emission Test Data

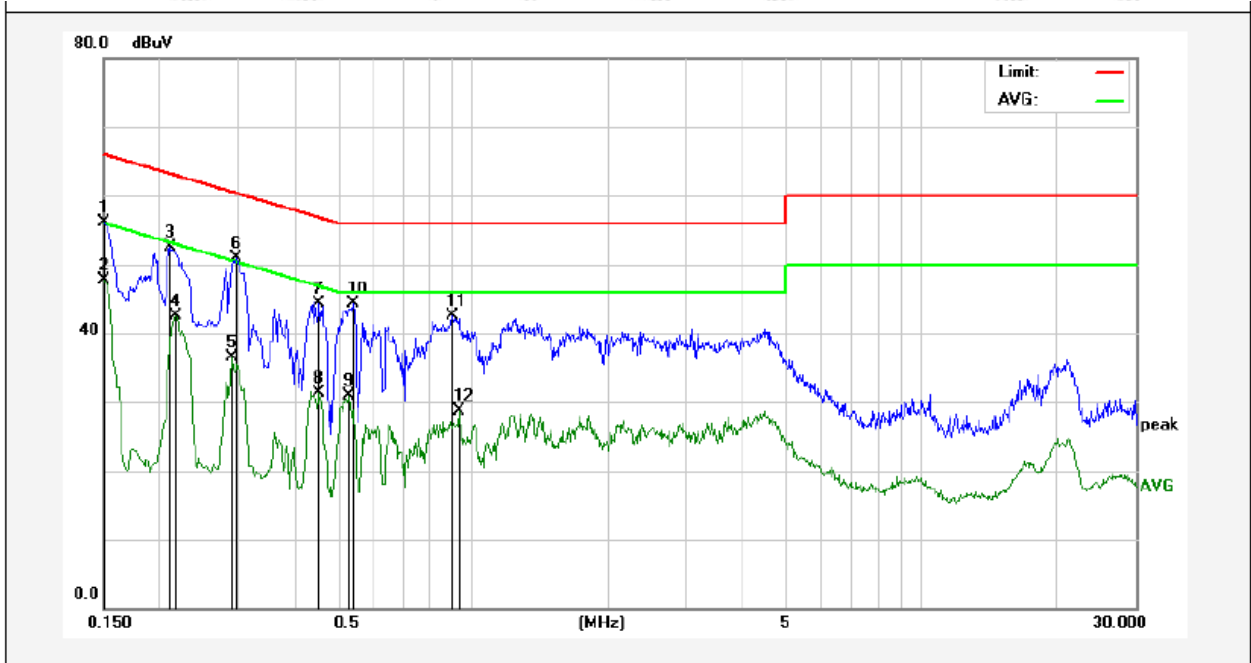
Test Site: 1# Shielded Room  
 Operating Condition: CH 01  
 Test Specification: AC 120V, 60Hz for MacBook Air  
 Comment: Live Line  
 Tem.: 24.5°C Hum.: 57%



No.	Freq. (MHz)	Reading (dBuV)	Factor (dB)	Result (dBuV)	Limit dBuV	Over Limit (dB)	Detector	Remark
1	0.1500	35.82	19.90	55.72	65.99	-10.27	QP	
2	0.1500	28.31	19.90	48.21	55.99	-7.78	AVG	
3	0.2140	32.39	19.90	52.29	63.04	-10.75	QP	
4	0.2220	22.00	19.90	41.90	52.74	-10.84	AVG	
5	0.2980	11.69	19.89	31.58	50.30	-18.72	AVG	
6	0.3820	24.68	19.93	44.61	58.23	-13.62	QP	
7	0.3820	10.28	19.93	30.21	48.23	-18.02	AVG	
8	0.4460	8.31	19.96	28.27	46.95	-18.68	AVG	
9	0.5260	19.61	19.99	39.60	56.00	-16.40	QP	
10	0.6180	19.32	20.02	39.34	56.00	-16.66	QP	
11	4.5060	23.60	20.19	43.79	56.00	-12.21	QP	
12	4.5939	11.22	20.20	31.42	46.00	-14.58	AVG	

### Conducted Emission Test Data

Test Site: 1# Shielded Room  
 Operating Condition: CH 01  
 Test Specification: AC 120V, 60Hz for MacBook Air  
 Comment: Neutral Line  
 Tem.: 24.5°C Hum.: 57%



No.	Freq. (MHz)	Reading (dBuV)	Factor (dB)	Result (dBuV)	Limit dBuV	Over Limit (dB)	Detector	Remark
1	0.1500	36.12	19.90	56.02	65.99	-9.97	QP	
2	0.1500	27.72	19.90	47.62	55.99	-8.37	AVG	
3	0.2106	32.52	19.90	52.42	63.18	-10.76	QP	
4	0.2180	22.65	19.90	42.55	52.89	-10.34	AVG	
5	0.2900	16.63	19.89	36.52	50.52	-14.00	AVG	
6	0.2980	30.97	19.89	50.86	60.30	-9.44	QP	
7	0.4540	24.38	19.96	44.34	56.80	-12.46	QP	
8	0.4540	11.25	19.96	31.21	46.80	-15.59	AVG	
9	0.5299	10.97	19.99	30.96	46.00	-15.04	AVG	
10	0.5420	24.24	19.99	44.23	56.00	-11.77	QP	
11	0.9020	22.32	20.09	42.41	56.00	-13.59	QP	
12	0.9300	8.63	20.10	28.73	46.00	-17.27	AVG	



## 4. Radiated Emission and Band Edge

### 4.1. Test Standard and Limit

Test Standard	FCC Part15 C Section 15.209 and 15.205				
Test Limit	Frequency (MHz)	Field strength (microvolt/meter)	Limit (dBuV/m)	Remark	Measurement distance (m)
	0.009MHz~0.490MHz	2400/F(kHz)	-	-	300
	0.490MHz-1.705MHz	24000/F(kHz)	-	-	30
	1.705MHz-30MHz	30	-	-	30
	30MHz~88MHz	100	40.0	Quasi-peak	3
	88MHz~216MHz	150	43.5	Quasi-peak	3
	216MHz~960MHz	200	46.0	Quasi-peak	3
	960MHz~1000MHz	500	54.0	Quasi-peak	3
	Above 1000MHz	500	54.0	Average	3
-		74.0	Peak	3	

**Remark:**

(1)The lower limit shall apply at the transition frequency.

(2) 15.35(b), Unless otherwise specified, the limit on peak radio frequency emissions is 20dB above the maximum permitted average emission limit applicable to the equipment under test. This peak limit applies to the total peak emission level radiated by the device.

Test Standard	FCC Part15 C Section 15.249					
Test Limit	Frequency (MHz)	Field Strength of fundamental ((millivolts /meter)	Field Strength of Harmonics (microvolts/meter)	Limit (dBuV/m)	Remark	Measurement distance (m)
	2400~2483.5	50	-	114.0	Peak	3
	2400~2483.5	50	-	94.0	Average	3
	2400~2483.5	-	500	74.0	Peak	3
	2400~2483.5	-	500	54.0	Average	3

**Remark:**

(1) 15.35(b), Unless otherwise specified, the limit on peak radio frequency emissions is 20dB above the maximum permitted average emission limit applicable to the equipment under test. This peak limit applies to the total peak emission level radiated by the device.

## 4.2. Test Setup

Figure 1. Below 30MHz

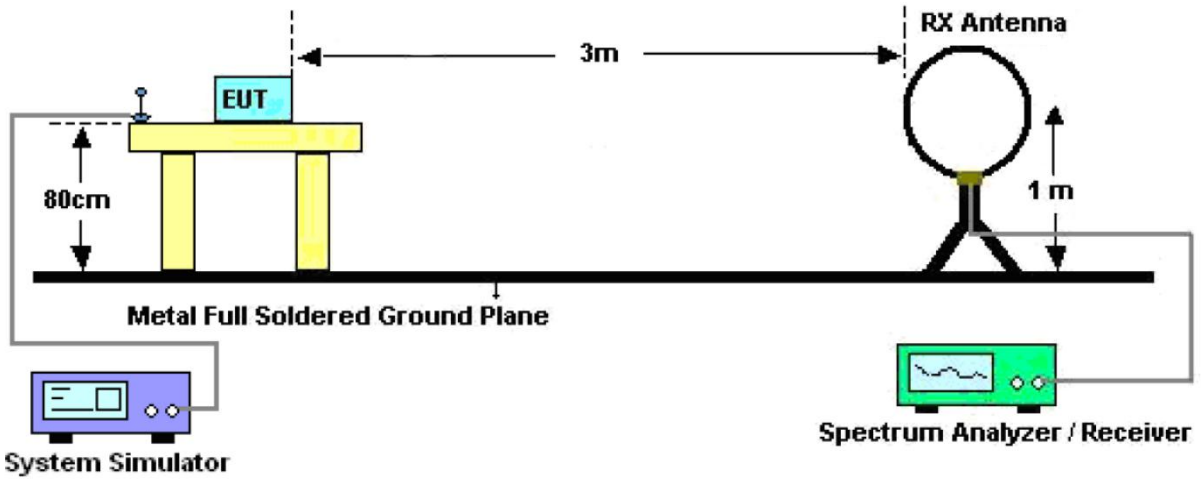


Figure 2. 30MHz to 1GHz

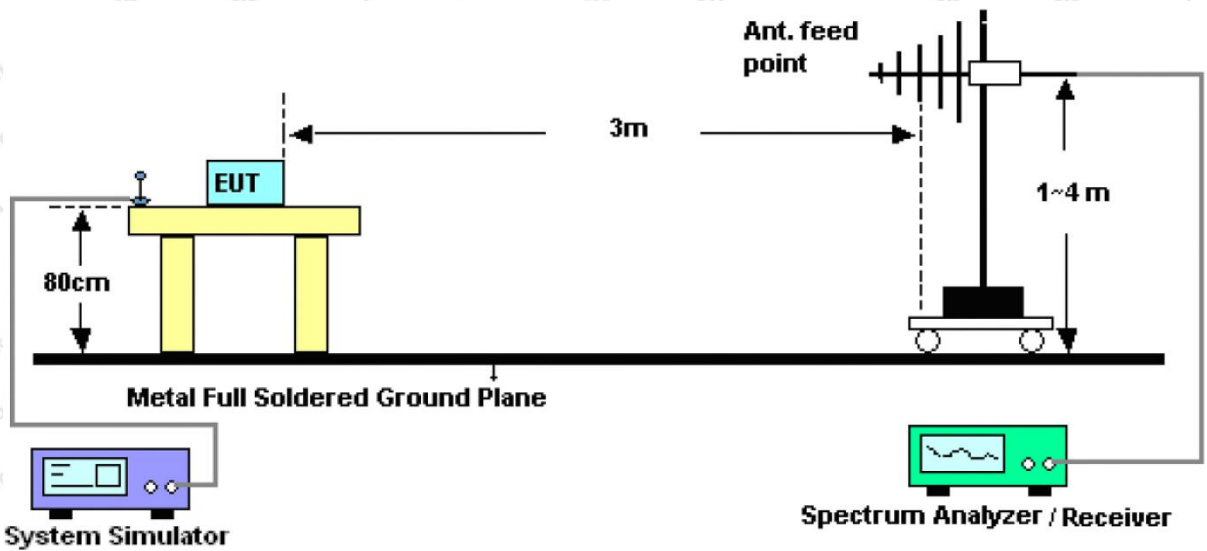
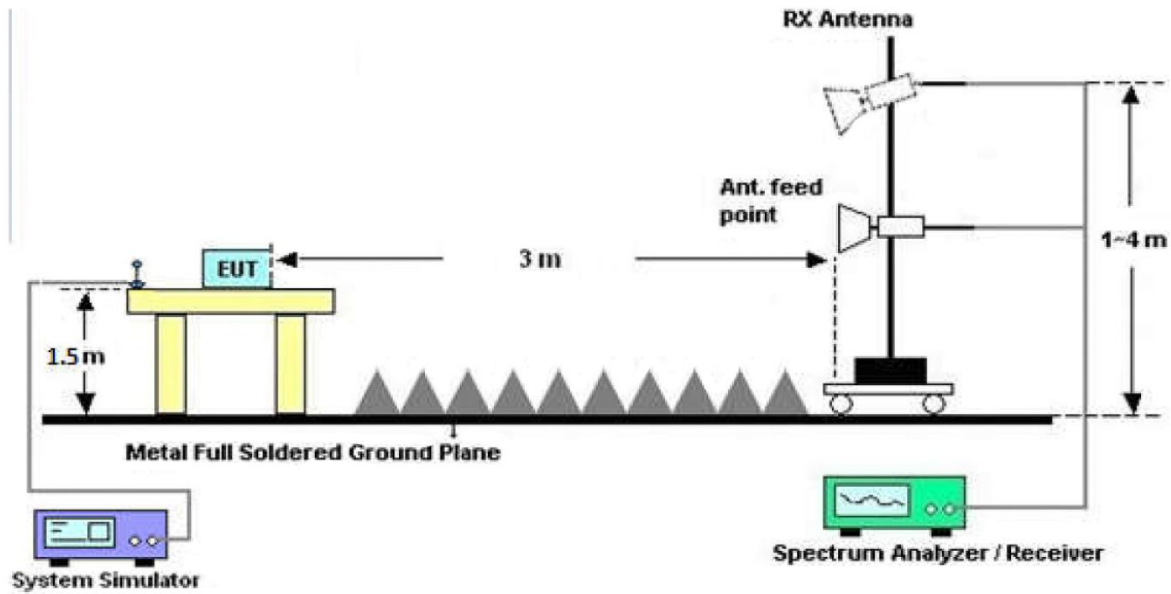


Figure 3. Above 1 GHz



### 4.3. Test Procedure

For below 1GHz: The EUT is placed on a turntable, which is 0.8m above the ground plane.

For above 1GHz: The EUT is placed on a turntable, which is 1.5m above the ground plane.

The turn table can rotate 360 degrees to determine the position of the maximum emission level. The EUT is set 3 meters away from the receiving antenna which is mounted on a antenna tower. The antenna can be moved up and down from 1 to 4 meters to find out the maximum emission level. Rotated the EUT through three orthogonal axes to determine the maximum emissions, both horizontal and vertical polarization of the antenna are set on test. The EUT is tested in 9\*6\*6 Chamber. The device is evaluated in xyz orientation.

For the radiated emission test above 1GHz:

Place the measurement antenna away from each area of the EUT determined to be a source of emissions at the specified measurement distance, while keeping the measurement antenna aimed at the source of emissions at each frequency of significant emissions, with polarization oriented for maximum response. The measurement antenna may have to be higher or lower than the EUT, depending on the radiation pattern of the emission and staying aimed at the emission source for receiving the maximum signal. The final measurement antenna elevation shall be that which maximizes the emissions. The measurement antenna elevation for maximum emissions shall be restricted to a range of heights of from 1 m to 4 m above the ground or reference ground plane.

For 9kHz to 150kHz, Set the spectrum analyzer as:

RBW = 200Hz, VBW = 1kHz, Detector= Quasi-Peak, Trace mode= Max hold, Sweep- auto couple.

For 150kHz to 30MHz, Set the spectrum analyzer as:

RBW = 9KHz, VBW = 30kHz, Detector= Quasi-Peak, Trace mode= Max hold, Sweep- auto couple.



For 30MHz to 1000MHz, Set the spectrum analyzer as:

RBW = 100kHz, VBW = 300kHz, Detector = Quasi-Peak, Trace mode = Max hold, Sweep = auto couple.

For above 1GHz, Set the spectrum analyzer as:

RBW = 1MHz, VBW = 1MHz, Detector = Peak, Trace mode = Max hold, Sweep = auto couple.

RBW = 1MHz, VBW = 10Hz, Detector = Average, Trace mode = Max hold, Sweep = auto couple.

#### 4.4. Test Data

##### PASS

During the test, Pre-scan all kind of the place mode (X-axis, Y-axis, Z-axis), and found the X-axis is the worst case.

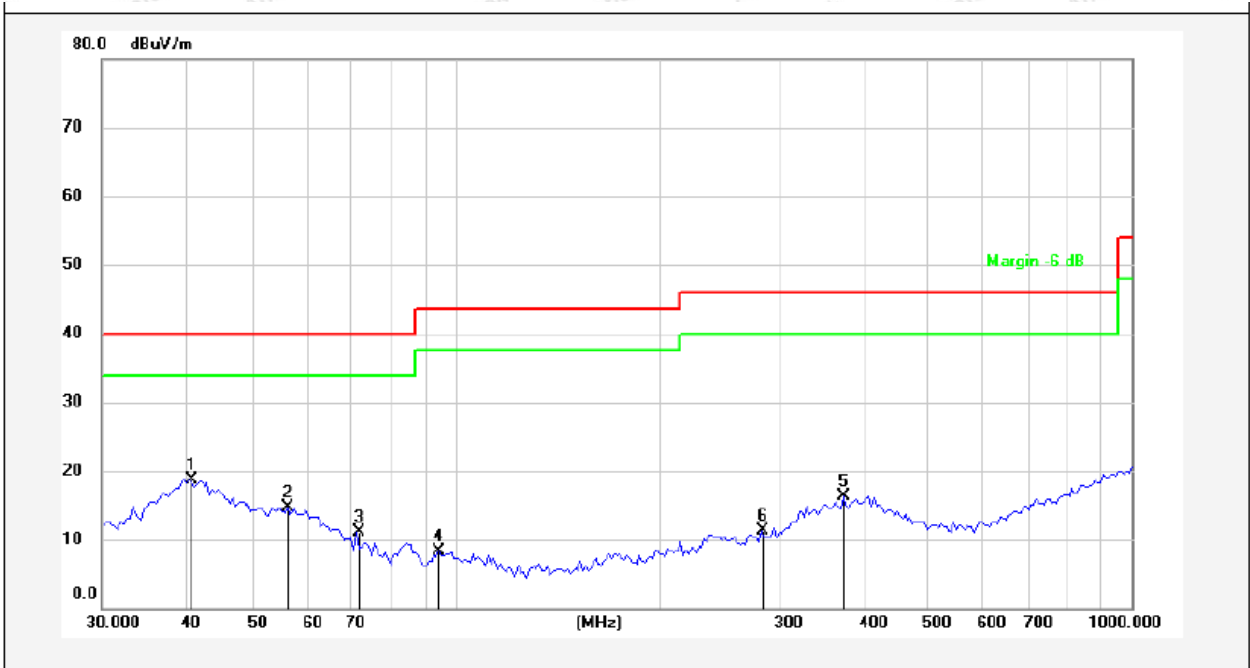
The test results of 9kHz-30MHz was attenuated more than 20dB below the permissible limits, so the results don't record in the report.

During the test, pre-scan all the modes, and found the Middle channel which is the worst case, only the worst case is recorded in the report



### Test Results (30~1000MHz)

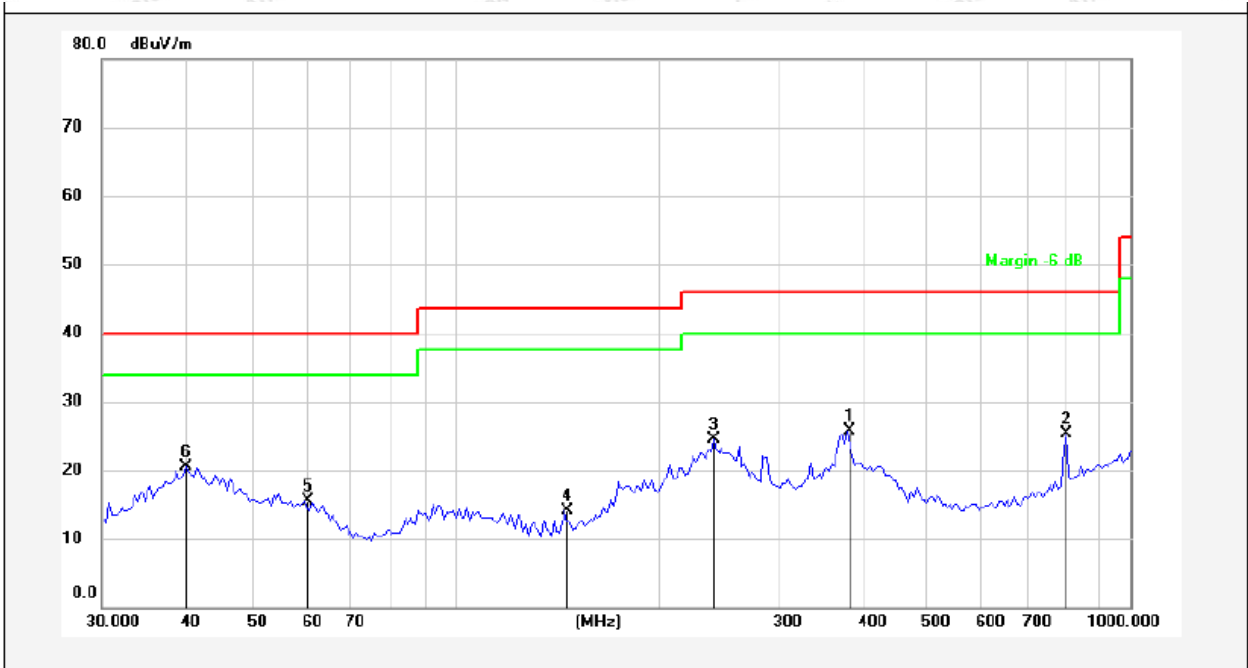
Test Mode: Mode 2  
 Power Source: AC 120V, 60Hz for MacBook Air  
 Polarization: Vertical  
 Temp.(°C)/Hum.(%RH): 22.6°C/57%RH



No.	Freq. (MHz)	Reading (dBuV)	Factor ( )	Result (dBuV/m)	Limit (dBuV/m)	Over Limit (dB)	Detector	Height (cm)	degree (deg)	Remark
1	40.4172	29.84	-11.11	18.73	40.00	-21.27	QP	300	254	
2	56.3948	30.22	-15.57	14.65	40.00	-25.35	QP	300	124	
3	71.4552	31.52	-20.50	11.02	40.00	-28.98	QP	300	282	
4	94.5941	25.46	-17.21	8.25	43.50	-35.25	QP	300	48	
5	374.6225	31.37	-15.08	16.29	46.00	-29.71	QP	300	305	
6	282.9852	28.89	-17.63	11.26	46.00	-34.74	QP	300	253	

### Test Results (30~1000MHz)

Test Mode: Mode 2  
 Power Source: AC 120V, 60Hz for MacBook Air  
 Polarization: Horizontal  
 Temp.(°C)/Hum.(%RH): 22.6°C/57%RH



No.	Freq. (MHz)	Reading (dBuV)	Factor ( )	Result (dBuV/m)	Limit (dBuV/m)	Over Limit (dB)	Detector	Height (cm)	degree (deg)	Remark
1	381.2487	41.75	-15.96	25.79	46.00	-20.21	QP	300	321	
2	803.1933	40.39	-15.03	25.36	46.00	-20.64	QP	300	88	
3	241.6763	45.21	-20.62	24.59	46.00	-21.41	QP	300	154	
4	145.3506	39.20	-25.14	14.06	43.50	-29.44	QP	300	157	
5	59.9639	32.42	-16.93	15.49	40.00	-24.51	QP	300	54	
6	40.0644	32.46	-11.96	20.50	40.00	-19.50	QP	300	237	



**Test Results (1GHz-25GHz)**

Test Mode: CH01 (Low channel)									
Frequency (MHz)	Read Level (dBuV)	Antenna Factor (dB/m)	Cable Loss (dB)	Preamp Factor (dB)	Level (dBuV/m)	Limit (dBuV/m)	Over Limit (dB)	Pol.	Detector
2402.0000	96.58	31.12	2.18	35.33	94.55	114.00	-19.45	V	Peak
2402.0000	85.57	31.12	2.18	35.33	83.54	94.00	-10.46	V	AVG
4804.0000	50.68	34.01	2.58	34.65	52.62	74.00	-21.38	V	Peak
4804.0000	38.25	34.01	2.58	34.65	40.19	54.00	-13.81	V	AVG
7206.0000	47.35	36.16	2.97	35.07	51.41	74.00	-22.59	V	Peak
7206.0000	38.90	36.16	2.97	35.07	42.96	54.00	-11.04	V	AVG
9608.0000	*								
12010.0000	*								
14412.0000	*								
16814.0000	*								
2402.0000	93.52	31.12	2.18	35.33	91.49	114.00	-22.51	H	Peak
2402.0000	83.50	31.12	2.18	35.33	81.47	94.00	-12.53	H	AVG
4804.0000	47.17	34.01	2.58	34.65	49.11	74.00	-24.89	H	Peak
4804.0000	40.58	34.01	2.58	34.65	42.52	54.00	-11.48	H	AVG
7206.0000	45.28	36.16	2.97	35.07	49.34	74.00	-24.66	H	Peak
7206.0000	36.43	36.16	2.97	35.07	40.49	54.00	-13.51	H	AVG
9608.0000	*								
12010.0000	*								
14412.0000	*								
16814.0000	*								

**Note:**

1. Level = Receiver Read level + Antenna Factor + Cable Loss – Pre-amplifier Factor
2. “\*” means the test results were attenuated more than 20dB below the permissible limits, so the results don't record in the report.

Test Mode: CH19 (Middle channel)									
Frequency (MHz)	Read Level (dBuV)	Antenna Factor (dB/m)	Cable Loss (dB)	Preamp Factor (dB)	Level (dBuV/m)	Limit (dBuV/m)	Over Limit (dB)	Pol.	Detector
2440.0000	95.41	31.12	2.20	34.51	94.22	114.00	-19.78	V	Peak
2440.0000	84.81	31.22	2.20	34.51	83.72	94.00	-10.28	V	AVG
4880.0000	47.66	34.98	2.49	34.14	50.99	74.00	-23.01	V	Peak
4880.0000	39.62	34.98	2.49	34.14	42.95	54.00	-11.05	V	AVG
7320.0000	48.66	36.01	3.01	34.56	53.12	74.00	-20.88	V	Peak
7320.0000	37.21	36.01	3.01	34.56	41.67	54.00	-12.33	V	AVG
9760.0000	*								
12200.0000	*								
14640.0000	*								
17080.0000	*								
2440.0000	93.28	31.12	2.20	34.51	92.09	114.00	-21.91	H	Peak
2440.0000	83.51	31.12	2.20	34.51	82.32	94.00	-11.68	H	AVG
4880.0000	50.14	34.98	2.49	34.14	53.47	74.00	-20.53	H	Peak
4880.0000	41.95	34.98	2.49	34.14	45.28	54.00	-8.72	H	AVG
7320.0000	46.40	36.01	3.01	34.56	50.86	74.00	-23.14	H	Peak
7320.0000	35.50	36.01	3.01	34.56	39.96	54.00	-14.04	H	AVG
9760.0000	*								
12200.0000	*								
14640.0000	*								
17080.0000	*								

**Note:**

1. Level = Receiver Read level + Antenna Factor + Cable Loss – Pre-amplifier Factor
2. "\*" means the test results were attenuated more than 20dB below the permissible limits, so the results don't record in the report.

Test Mode: CH40 (High channel)									
Frequency (MHz)	Read Level (dBuV)	Antenna Factor (dB/m)	Cable Loss (dB)	Preamp Factor (dB)	Level (dBuV/m)	Limit (dBuV/m)	Over Limit (dB)	Pol.	Detector
2480.0000	95.32	31.65	2.23	36.07	93.13	114.00	-20.87	V	Peak
2480.0000	83.18	31.65	2.23	36.07	80.99	94.00	-13.01	V	AVG
4960.0000	50.09	35.06	2.60	34.93	52.82	74.00	-21.18	V	Peak
4960.0000	40.18	35.06	2.60	34.93	42.91	54.00	-11.09	V	AVG
7440.0000	47.90	36.19	3.12	35.11	52.10	74.00	-21.90	V	Peak
7440.0000	35.92	36.19	3.12	35.11	40.12	54.00	-13.88	V	AVG
9920.0000	*								
12400.0000	*								
14880.0000	*								
17360.0000	*								
2480.0000	94.64	31.65	2.23	36.07	92.45	114.00	-21.55	H	Peak
2480.0000	82.06	31.65	2.23	36.07	79.87	94.00	-14.13	H	AVG
4960.0000	47.53	35.06	2.60	34.93	50.26	74.00	-23.74	H	Peak
4960.0000	40.65	35.06	2.60	34.93	43.38	54.00	-10.62	H	AVG
7440.0000	48.39	36.19	3.12	35.11	52.59	74.00	-21.41	H	Peak
7440.0000	38.97	36.19	3.12	35.11	43.17	54.00	-10.83	H	AVG
9920.0000	*								
12400.0000	*								
14880.0000	*								
17360.0000	*								

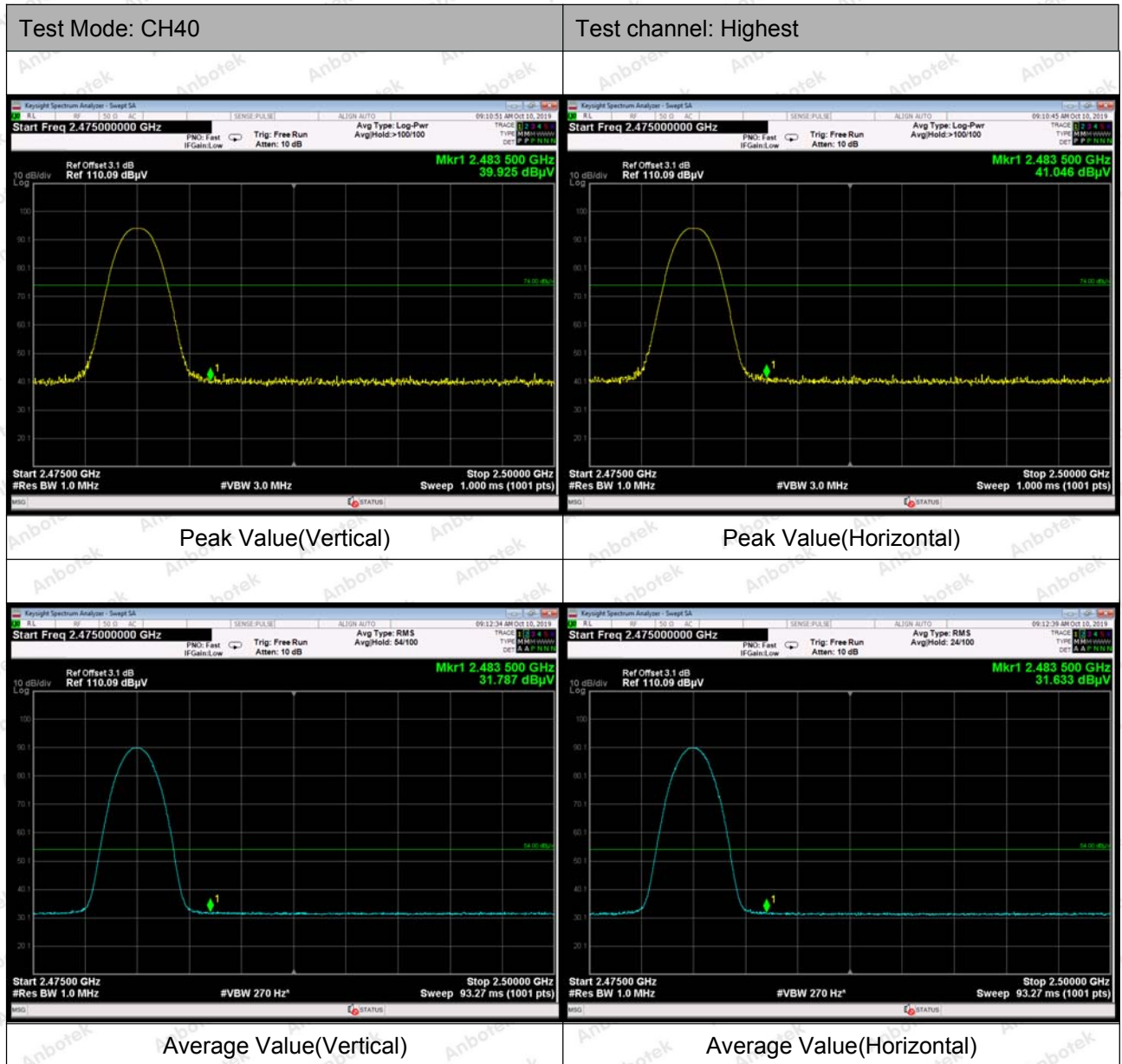
**Note:**

1. Level = Receiver Read level + Antenna Factor + Cable Loss – Pre-amplifier Factor
2. "\*" means the test results were attenuated more than 20dB below the permissible limits, so the results don't record in the report.



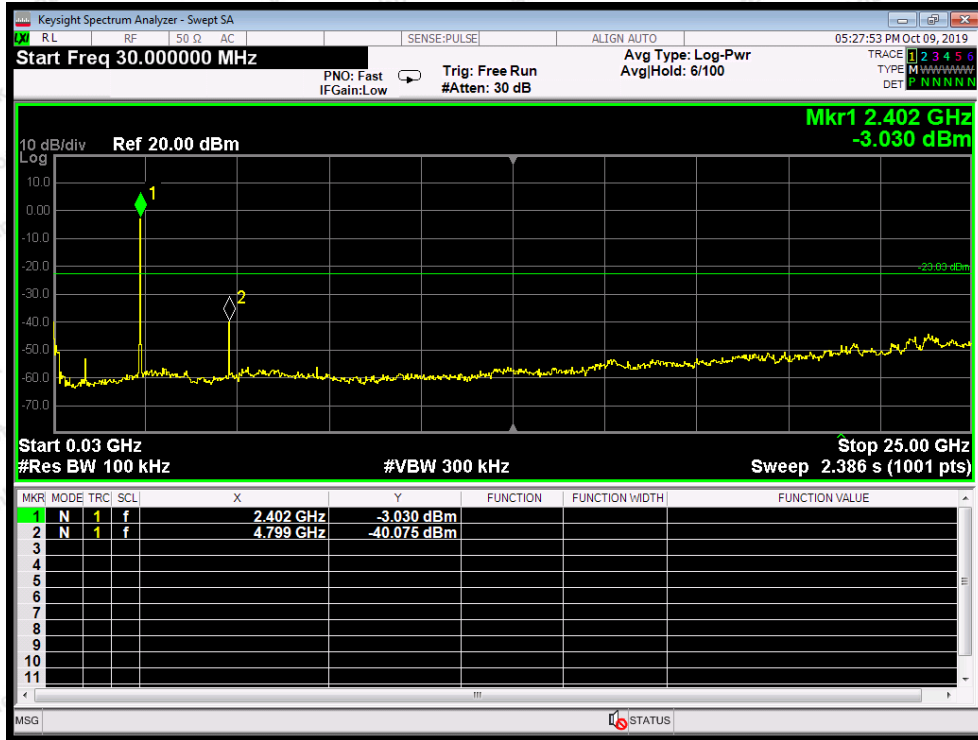
**Radiated Band Edge:**



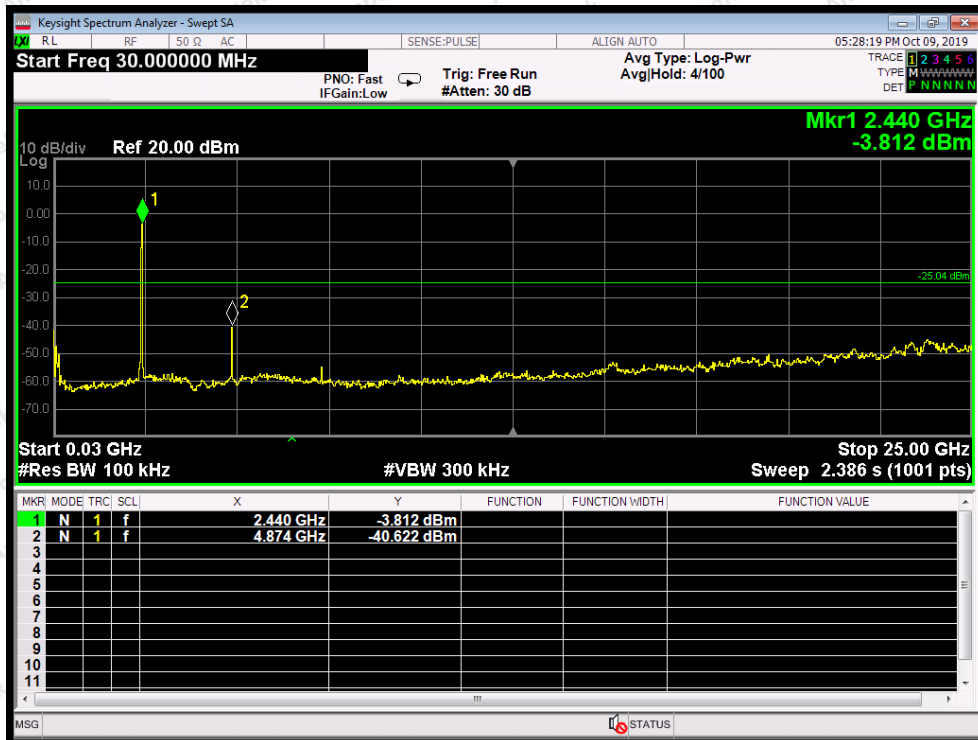


Remark:

1. Level = Receiver Read level + Antenna Factor + Cable Loss – Pre-amplifier Factor

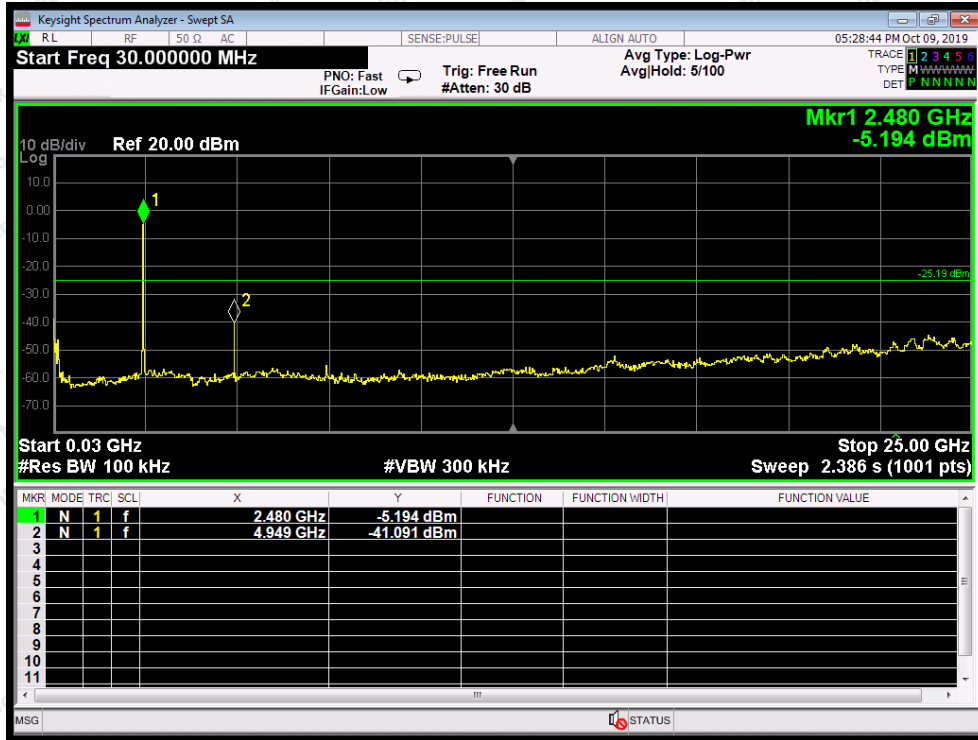


CH: Low



CH: Middle





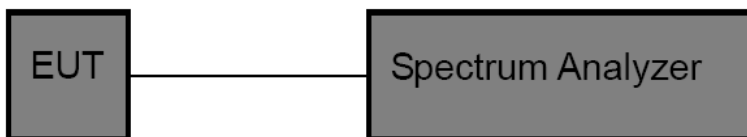
CH: High

## 5. 20dB Bandwidth Test

### 5.1. Test Standard and Limit

Test Standard	FCC Part15 C Section 15.249
---------------	-----------------------------

### 5.2. Test Setup



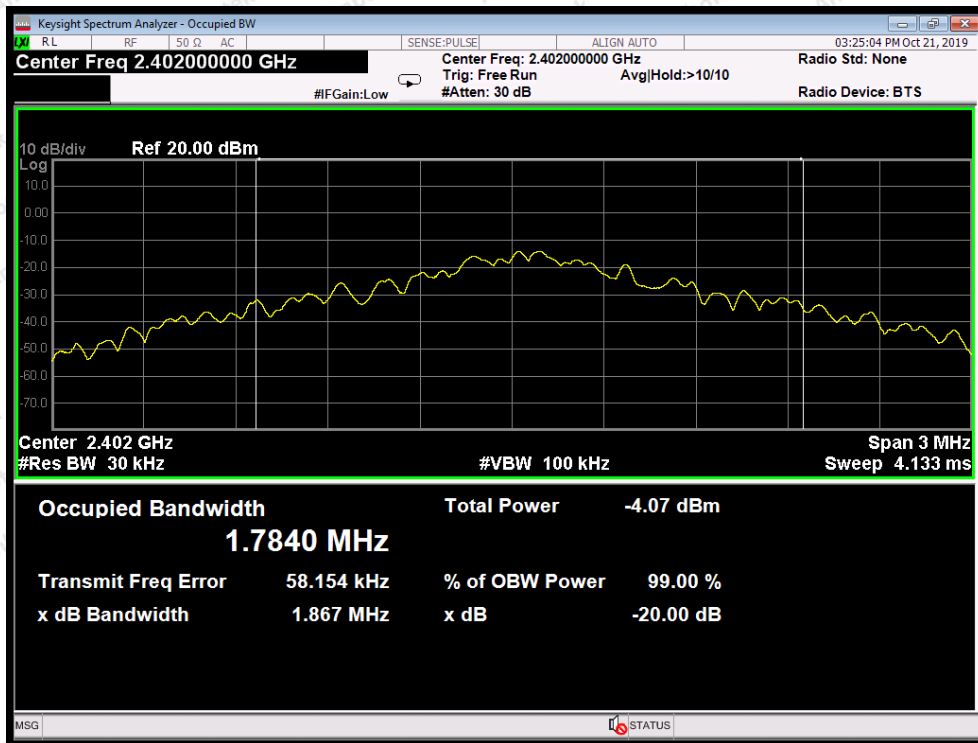
### 5.3. Test Procedure

1. Place the EUT on the table and set it in the transmitting mode.
2. Remove the antenna from the EUT and then connect a low loss RF cable from the antenna port to the spectrum analyzer.
3. Set the spectrum analyzer as:  
 RBW = 30kHz, VBW≥3\*RBW =100kHz,  
 Detector= Average  
 Trace mode= Max hold.  
 Sweep- auto couple.
4. Mark the peak frequency and -20dB (upper and lower) frequency.
5. Repeat until all the rest channels are investigated.

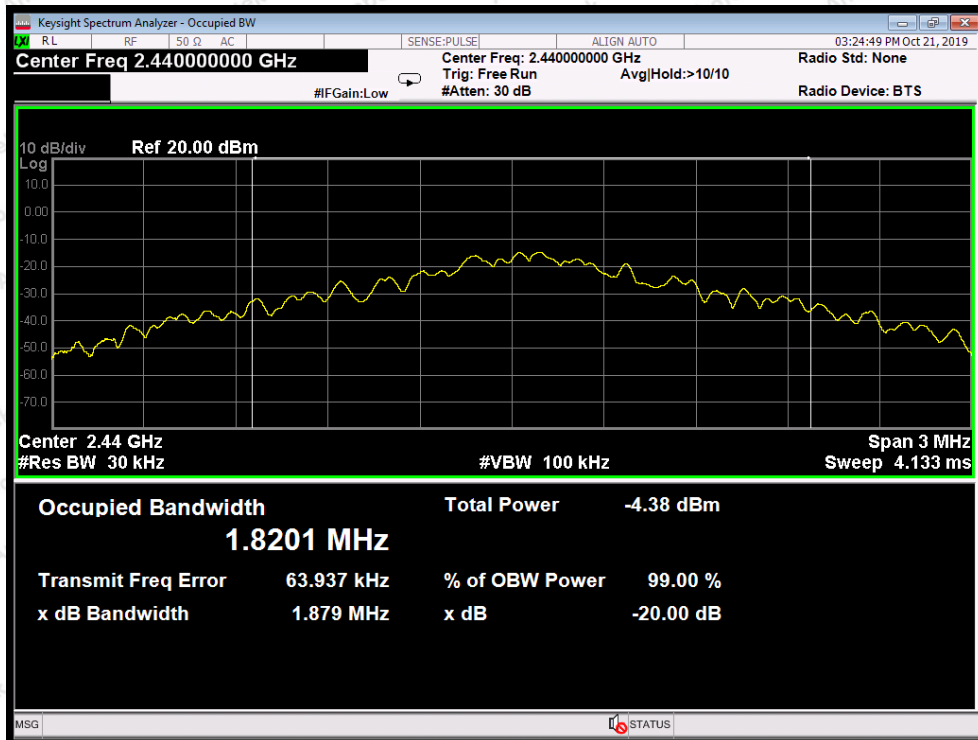
### 5.4. Test Data

Test Item	: 20dB Bandwidth	Test Mode	: Mode 1
Test Voltage	: AC 120V, 60Hz for MacBook Air	Temperature	: 22.4°C
Test Result	: PASS	Humidity	: 55%RH

Frequency (MHz)	Bandwidth (kHz)	Result
2402MHZ	1867	PASS
2440MHZ	1879	PASS
2480MHZ	1891	PASS

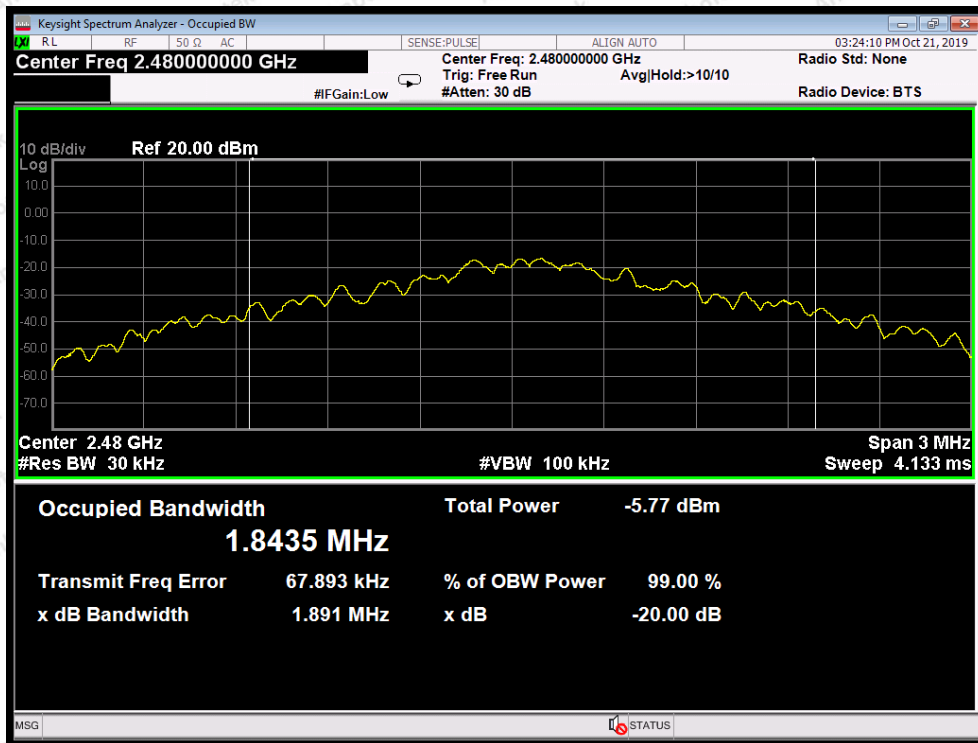


Test Mode: Low



Test Mode: Middle





Test Mode: High

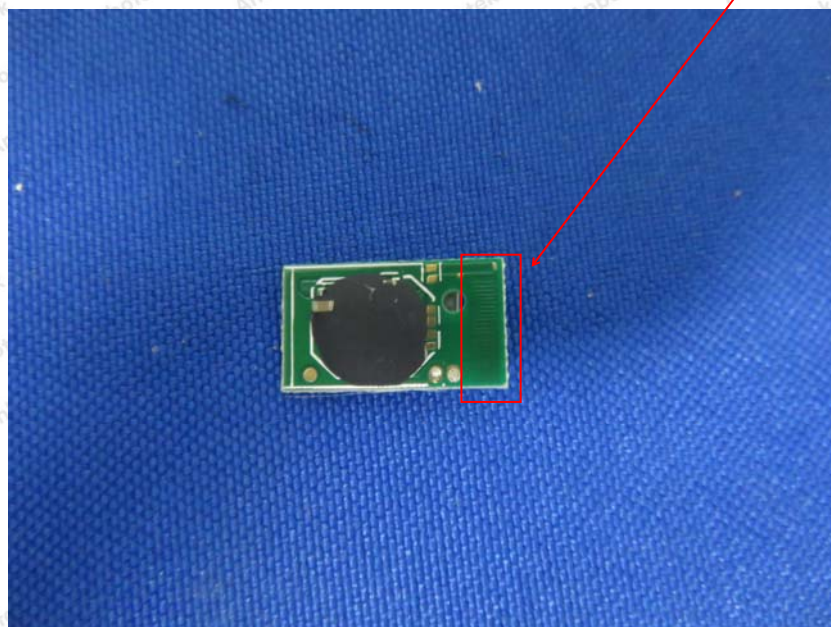
## 6. Antenna Requirement

### 6.1. Test Standard and Requirement

Test Standard	FCC Part15 Section 15.203
Requirement	1) 15.203 requirement: An intentional radiator shall be designed to ensure that no antenna other than that furnished by the responsible party shall be used with the device. The use of a permanently attached antenna or of an antenna that uses a unique coupling to the intentional radiator, the manufacturer may design the unit so that a broken antenna can be replaced by the user, but the use of a standard antenna jack or electrical connector is prohibited.

### 6.2. Antenna Connected Construction

The antenna is a PCB Antenna which permanently attached, and the best case gain of the antenna is 0 dBi. It complies with the standard requirement.



Antenna



## APPENDIX I -- TEST SETUP PHOTOGRAPH

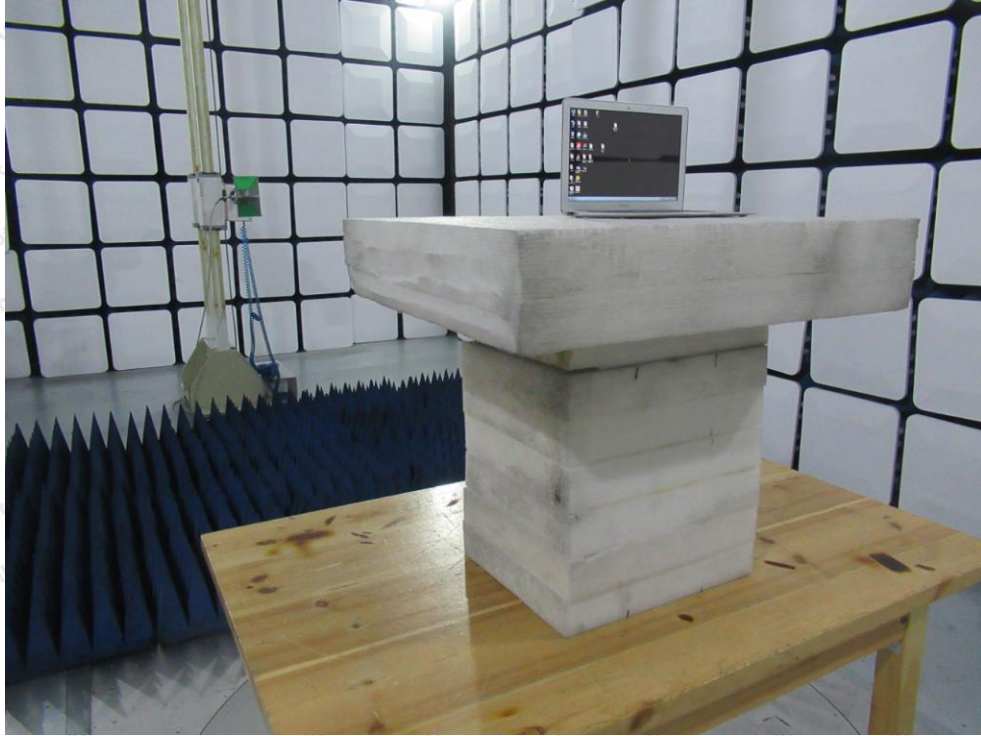
Photo of Conducted Emission Test



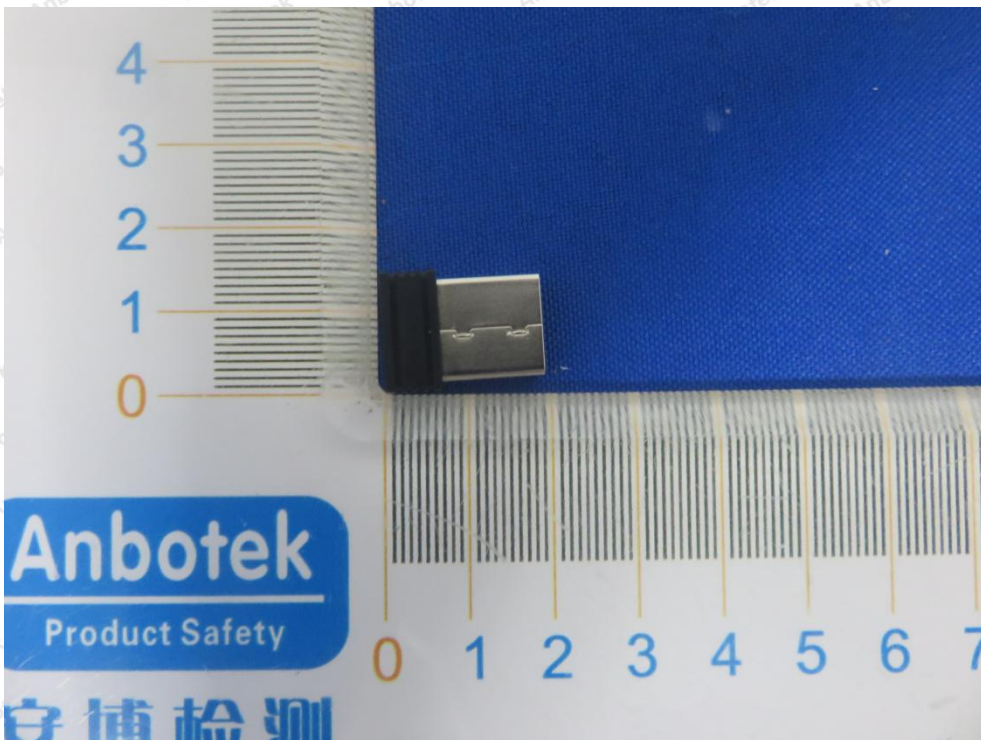
Photo of Radiation Emission Test



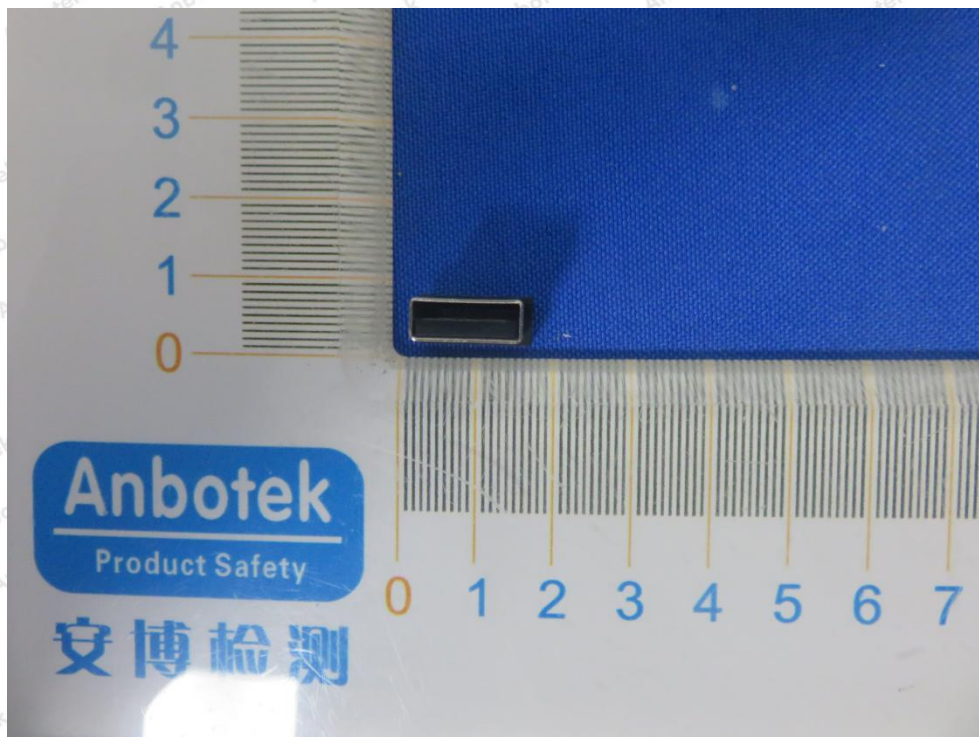




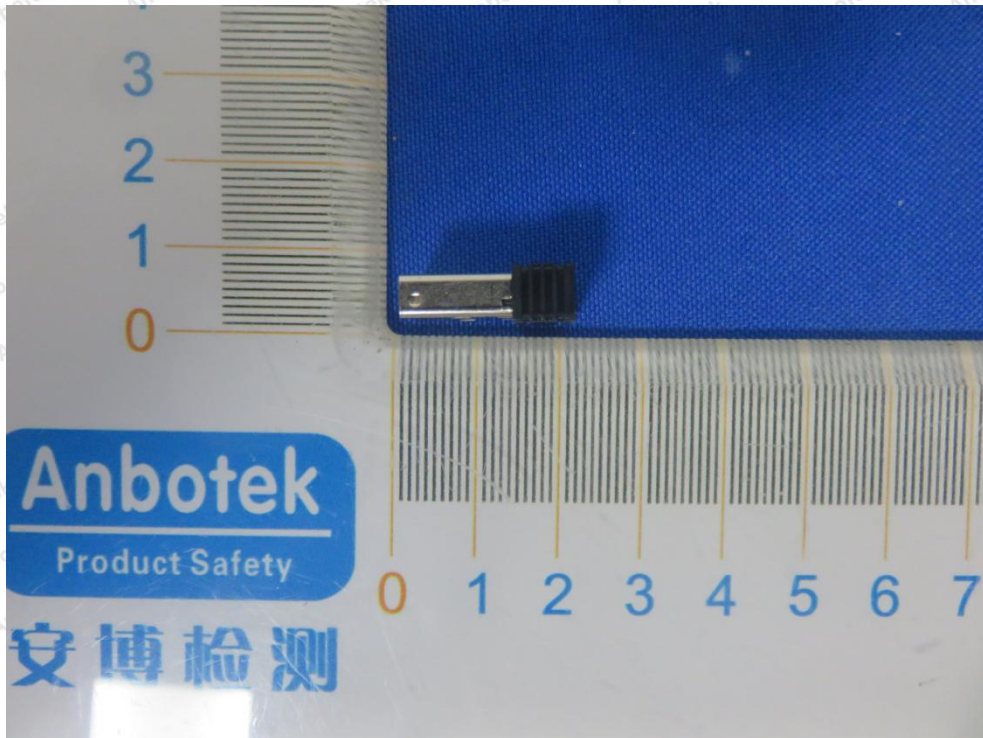
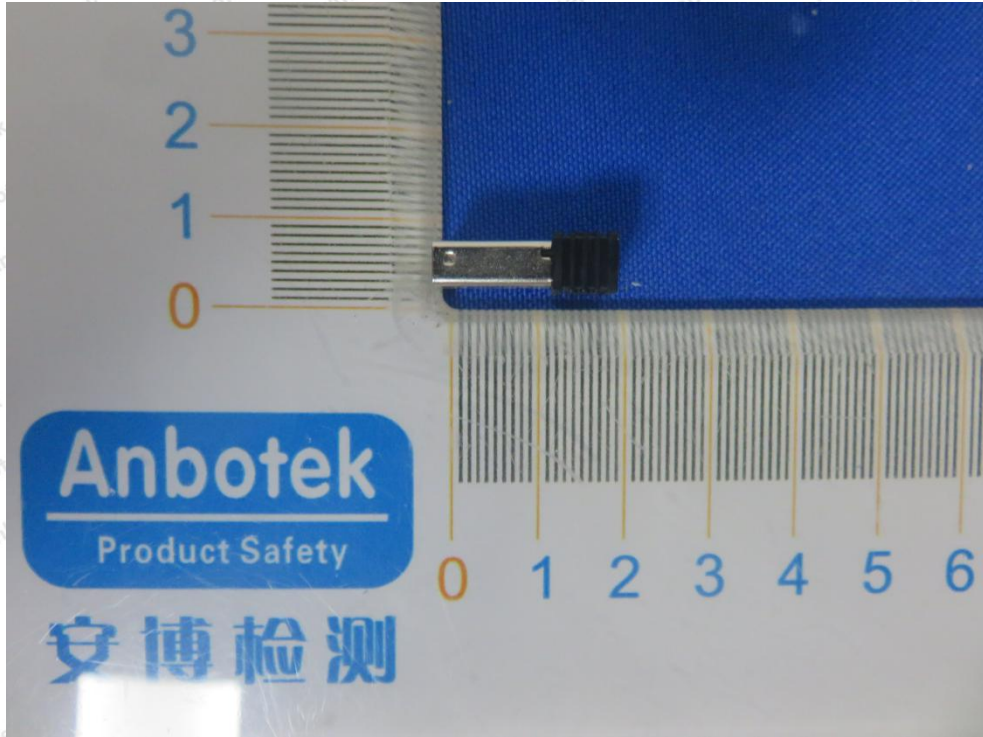
## APPENDIX II -- EXTERNAL PHOTOGRAPH



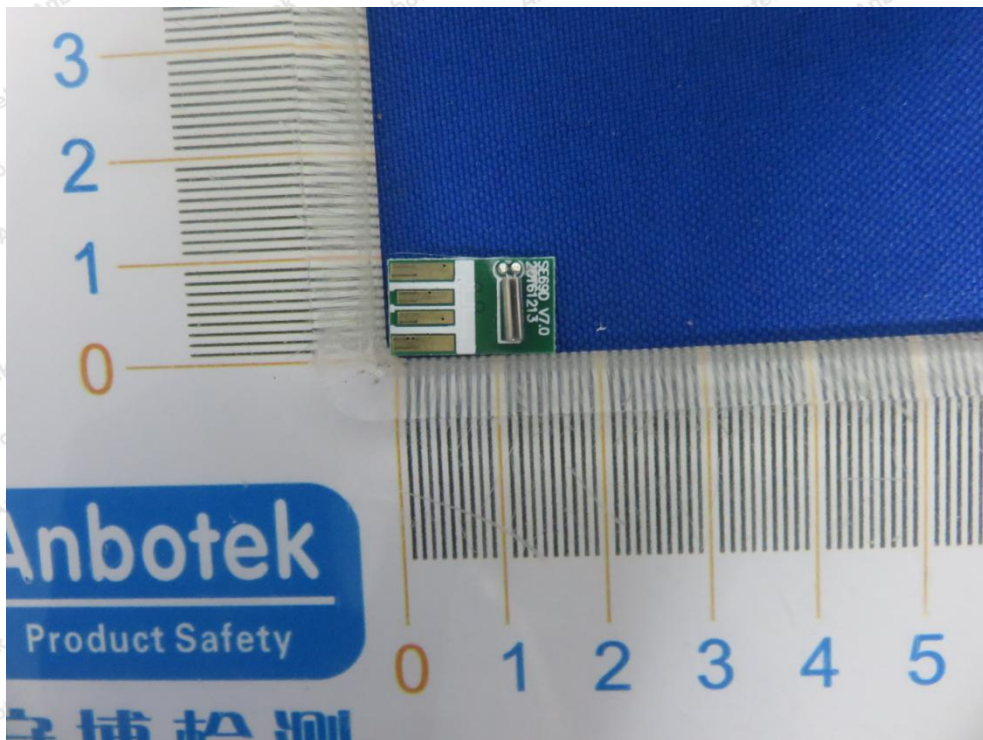
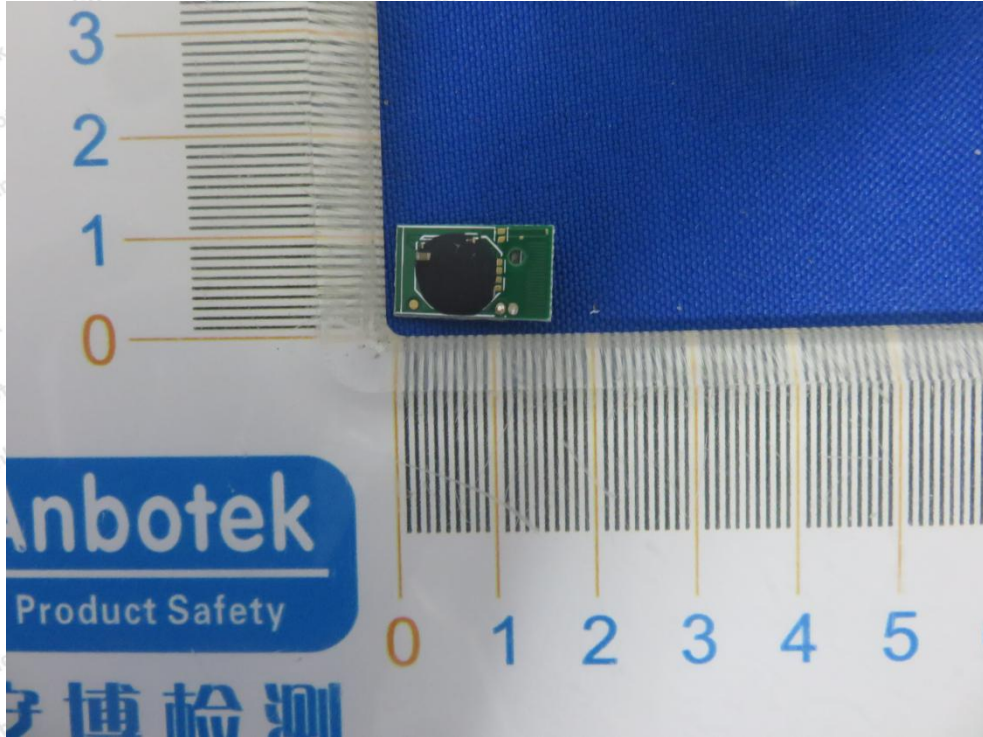




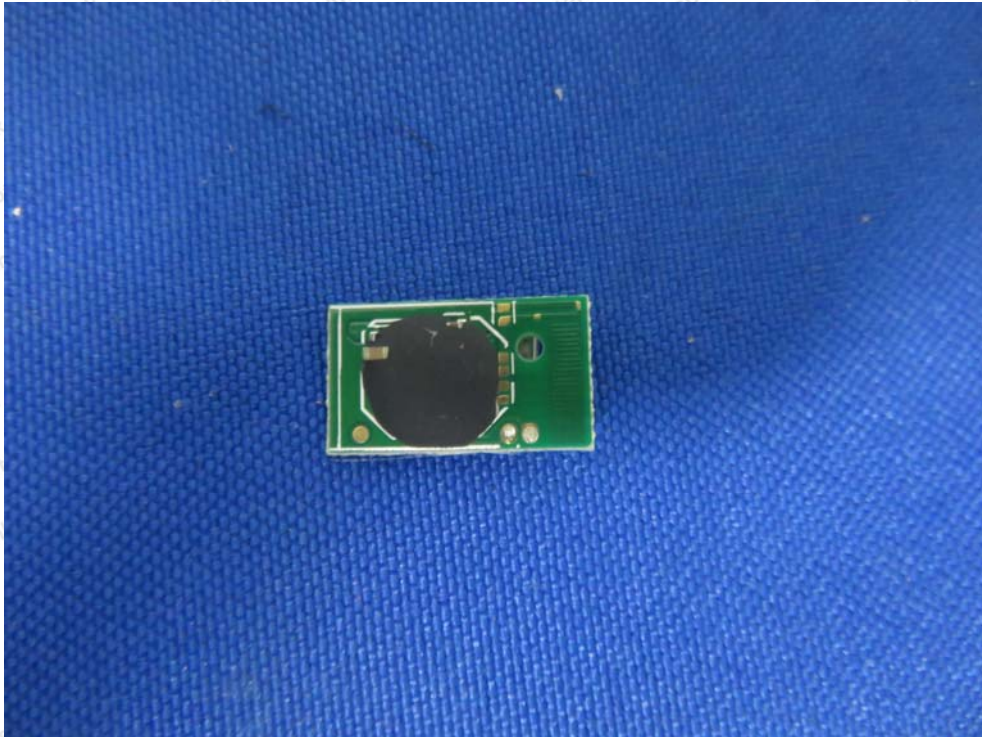




### APPENDIX III -- INTERNAL PHOTOGRAPH







----- End of Report -----